

KING GEORGE PARK

Lotmead





Welcome to **KING GEORGE PARK**

Step into a vibrant new chapter at **King George Park**, an inspiring collection of beautifully crafted 3, 4, and 5-bedroom homes nestled in the heart of Lotmead, a growing village on the edge of Swindon.

Set within the visionary New Eastern Villages development, this thoughtfully designed neighbourhood is surrounded by lush green spaces and scenic countryside. Meandering walking and cycling paths, children's play areas, and future plans for a local centre, primary school, and sports facilities make this a place where community and nature thrive side by side.

Whether you're stepping onto the property ladder or moving up it, our homes are built with you in mind. Enjoy open-plan living, bi-fold or French doors, and light-filled interiors that bring the outdoors in. With energy-efficient features like solar panels and electric vehicle charging points, you'll enjoy lower bills and a greener lifestyle.





THE PERFECT LOCATION

Step into a vibrant new chapter at **King George Park** nestled in the heart of Lotmead, a growing village on the edge of Swindon. Enjoy village life with all that Swindon has to offer on your doorstep.

From everyday essentials to weekend indulgences, you'll find it all just minutes away. Choose from nearby supermarkets or treat yourself at Designer Outlet Swindon and Greenbridge Retail and Leisure Park, where top fashion brands and entertainment await.

When it's time to unwind, enjoy a cosy meal at a local pub in the charming neighbouring village of Wanborough or explore Swindon's buzzing food and drink scene. Whether it's a quiet pint or a lively dinner, there's something for every mood.

From the rolling hills of Wiltshire and Oxfordshire to the timeless charm of The Cotswolds, adventure is always close by.

Discover the peaceful beauty of Coate Water Country Park or tee off at Broome Manor Golf Club.

With excellent transport links via the A419 and A420 you'll be well-connected for Oxford, Cirencester, Cheltenham and Gloucester and with the M4 and Swindon railway station close by London, Bath and Bristol are just an hour or so away. King George Park offers the perfect balance of countryside calm and everyday convenience.

King George Park - Your dream home, your perfect lifestyle.

KING GEORGE PARK

DORCAN ACADEMY
1.1 miles

SUPERMARKET
1.7 miles

WANBOROUGH
PRIMARY SCHOOL
2 miles

GREENBRIDGE RETAIL
& LEISURE PARK
2.1 miles

COATE WATER
COUNTRY PARK
2.6 miles

NEW COLLEGE SWINDON
3.2 miles

SWINDON RAILWAY STATION
3.8 miles

SWINDON DESIGNER OUTLET
SHOPPING CENTRE
4.4 miles

THE PERFECT LOCATION

Step into a vibrant new chapter at **King George Park** nestled in the heart of Lotmead, a growing village on the edge of Swindon. Enjoy village life with all that Swindon has to offer on your doorstep.

From everyday essentials to weekend indulgences, you'll find it all just minutes away. Choose from nearby supermarkets or treat yourself at Designer Outlet Swindon and Greenbridge Retail and Leisure Park, where top fashion brands and entertainment await.

When it's time to unwind, enjoy a cosy meal at a local pub in the charming neighbouring village of Wanborough or explore Swindon's buzzing food and drink scene. Whether it's a quiet pint or a lively dinner, there's something for every mood.

From the rolling hills of Wiltshire and Oxfordshire to the timeless charm of The Cotswolds, adventure is always close by.

Discover the peaceful beauty of Coate Water Country Park or tee off at Broome Manor Golf Club.

With excellent transport links via the A419 and A420 you'll be well-connected for Oxford, Cirencester, Cheltenham and Gloucester and with the M4 and Swindon railway station close by London, Bath and Bristol are just an hour or so away. King George Park offers the perfect balance of countryside calm and everyday convenience.

King George Park – Your dream home, your perfect lifestyle.



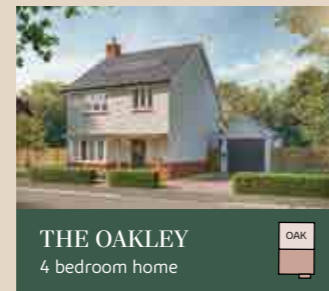
- **KING GEORGE PARK**
- **DORCAN ACADEMY**
1.1 miles
- **SUPERMARKET**
1.7 miles
- **WANBOROUGH PRIMARY SCHOOL**
2 miles
- **GREENBRIDGE RETAIL & LEISURE PARK**
2.1 miles
- **COATE WATER COUNTRY PARK**
2.6 miles
- **NEW COLLEGE SWINDON**
3.2 miles
- **SWINDON RAILWAY STATION**
3.8 miles
- **SWINDON DESIGNER OUTLET SHOPPING CENTRE**
4.4 miles

MASTERPLAN



DEVELOPMENT LAYOUT

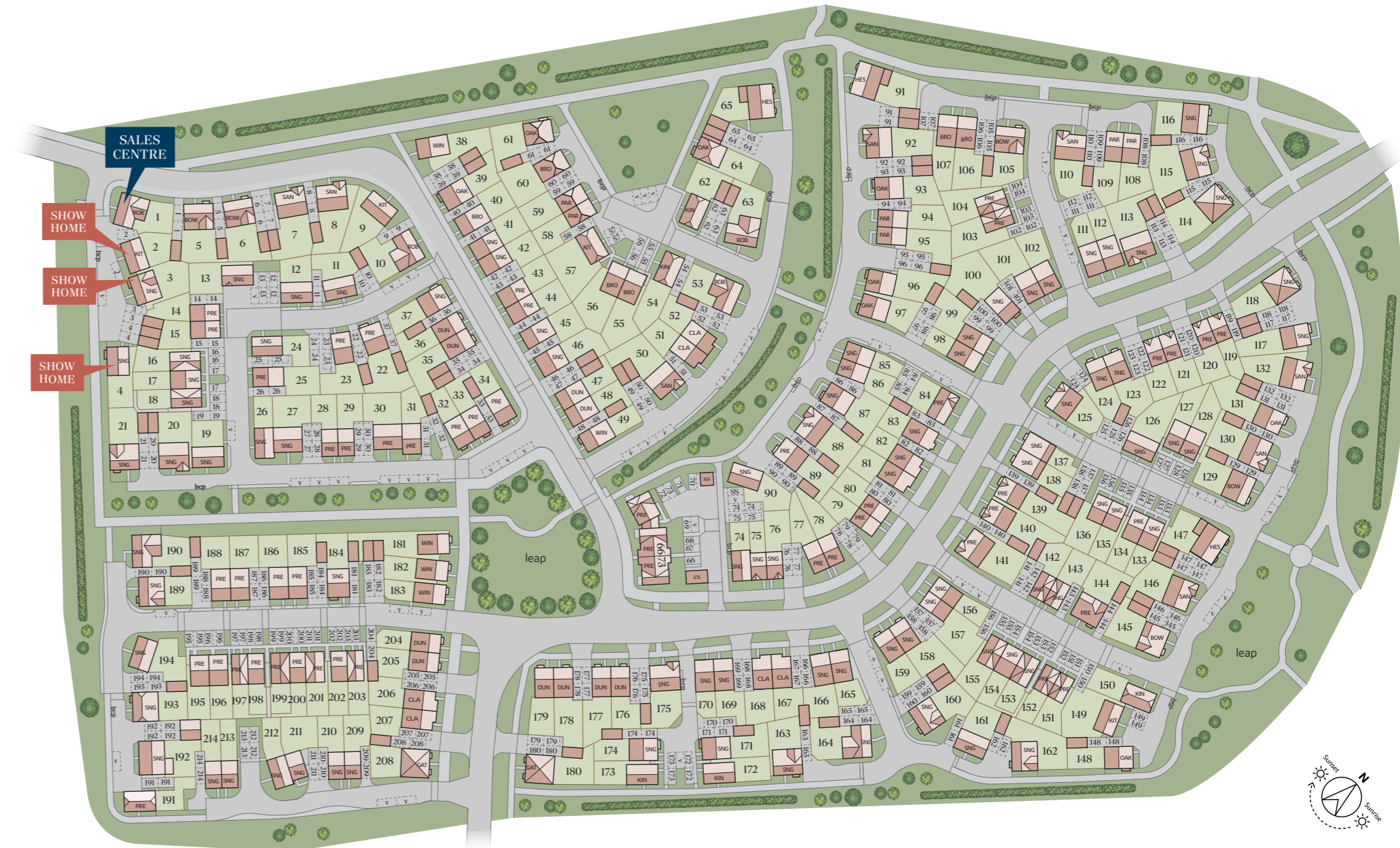
King George Park boasts a stunning range of three, four and five bedroom homes each with unique views and aspects. Discover your dream home today.



v visitor space
bcp bin collection point
cs cycle store
leap play area

PRE Pre-sold homes

SNG Shared ownership homes



The site plan shown on this page has been produced for home identification purposes only and is not to scale.

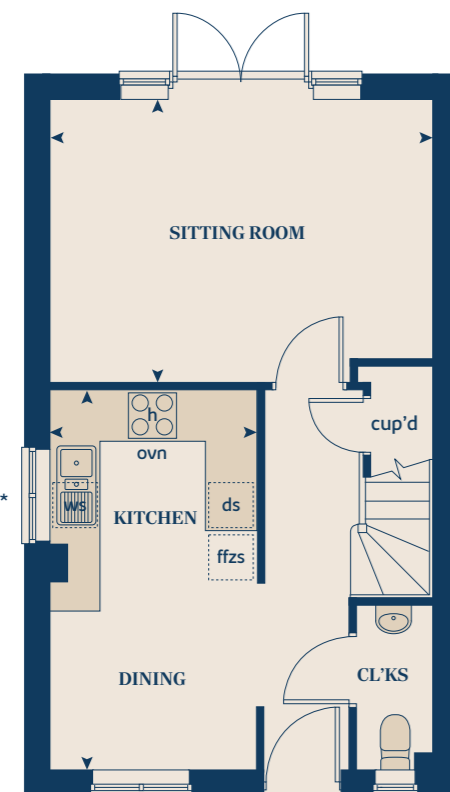
The development layout, landscaping and tenure of all dwellings may be subject to change throughout the course of the development. Homes shown as "pre sold" and other properties sold on the general market may not be sold to individual owner occupiers and may instead be transferred to other purchasers, including private investors or affordable housing providers. As partner arrangements are agreed, the mix of tenures across a development can change significantly and rapidly.

Finishes and materials may vary from those shown. Please check the details of your chosen plot and house type with the sales consultant. Development layout plan correct at time of production.

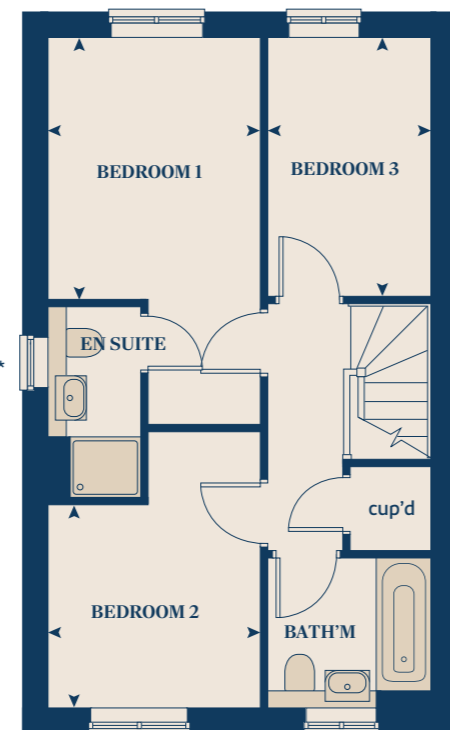
THE PARTRIDGE

3 bedroom home

GROUND FLOOR



FIRST FLOOR



GROUND FLOOR	METRES	FEET/INCHES	FIRST FLOOR	METRES	FEET/INCHES
Kitchen / dining room	4.8 x 2.6	15' 2" x 8' 1"	Bedroom 1	3.4 x 2.7	11' 1" x 8' 1"
Sitting room	4.9 x 3.6	16' 2" x 11' 1"	Bedroom 2	2.7 x 2.6	8' 1" x 8' 1"
			Bedroom 3	3.3 x 2.0	10' 7" x 6' 5"

< >	measuring points	ffzs	fridge freezer space
ws	washing machine space	ds	dishwasher space
h	hob	cup'd	cupboard
ovn	oven		

* Windows apply to selected plots only. Please speak to a sales consultant for further details.

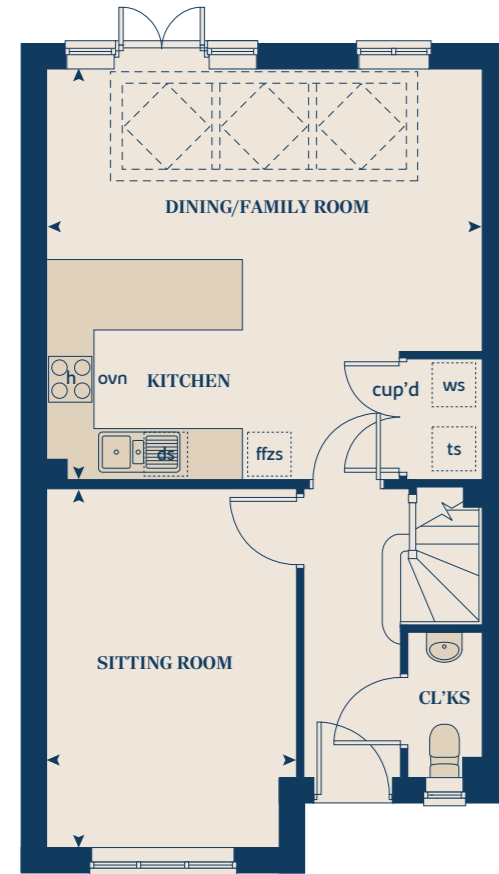
The Partridge | King George Park The floorplan has been produced for illustrative purposes only. Room sizes shown are between arrow points as indicated on plan. The dimensions have tolerances of + or -50mm and should not be used other than for general guidance. If specific dimensions are required, enquiries should be made to the sales consultant. The floor plans shown are not to scale. Measurements are based on the original drawings. Slight variations may occur during construction. The illustrations shown are computer generated impressions of how the property may look and are indicative only. External details or finishes may vary on individual plots and homes may be built in either detached or attached styles depending on the development layout. Exact specifications, window styles and whether a property is left or right-handed may differ from plot to plot. Please speak to our sales consultant for specific plot details.



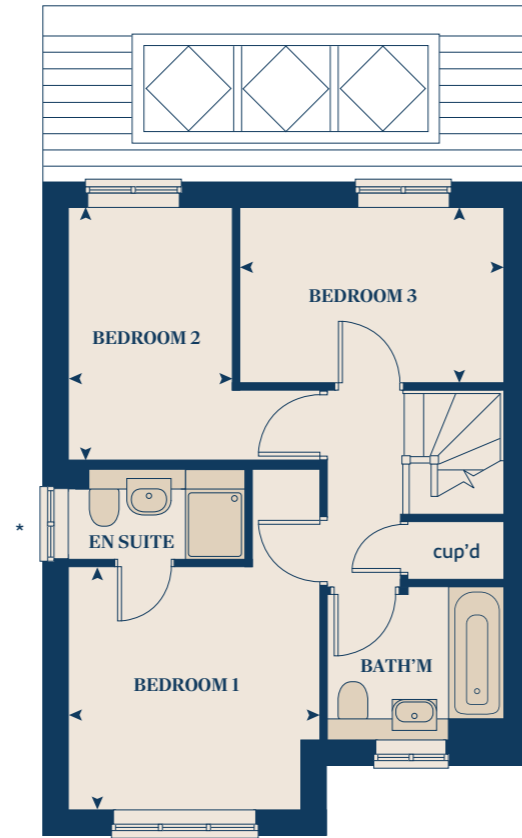
THE CLAVERTON

3 bedroom home

GROUND FLOOR



FIRST FLOOR



	METRES	FEET/INCHES		METRES	FEET/INCHES
GROUND FLOOR			FIRST FLOOR		
Kitchen/dining/family room	5.5 x 5.2	17' 9" x 17' 0"	Bedroom 1	3.2 x 3.1	10' 6" x 10' 2"
Sitting room	4.5 x 3.1	14' 2" x 10' 2"	Bedroom 2	3.3 x 2.1	10' 6" x 6' 8"
			Bedroom 3	3.3 x 2.0	10' 6" x 6' 5"

◀ ▶	measuring points	ovn	oven
ws	washing machine space	ffzs	fridge freezer space
ts	tumble dryer space	ds	dishwasher space
h	hob	cup'd	cupboard

* Windows apply to selected plots only. Please speak to a sales consultant for further details.

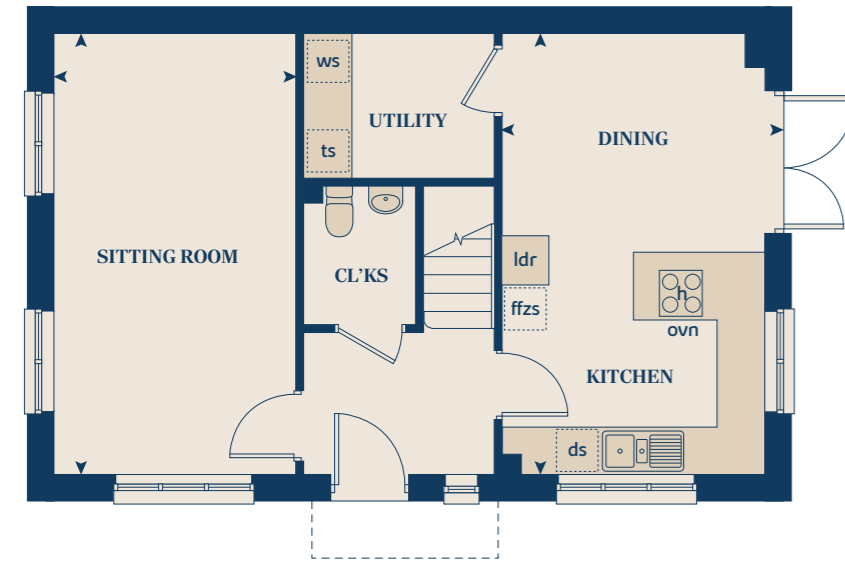
The Claverton | King George Park The floorplan has been produced for illustrative purposes only. Room sizes shown are between arrow points as indicated on plan. The dimensions have tolerances of + or -50mm and should not be used other than for general guidance. If specific dimensions are required, enquiries should be made to the sales consultant. The floor plans shown are not to scale. Measurements are based on the original drawings. Slight variations may occur during construction. The illustrations shown are computer generated impressions of how the property may look and are indicative only. External details or finishes may vary on individual plots and homes may be built in either detached or attached styles depending on the development layout. Exact specifications, window styles and whether a property is left or right-handed may differ from plot to plot. Please speak to our sales consultant for specific plot details.



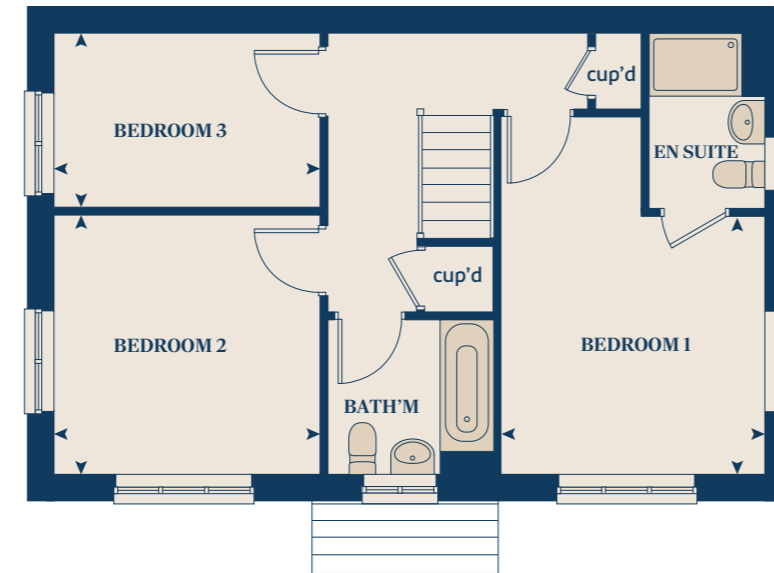
THE KINGFISHER

3 bedroom home

GROUND FLOOR



FIRST FLOOR



GROUND FLOOR	METRES	FEET/INCHES	FIRST FLOOR	METRES	FEET/INCHES
Kitchen / dining room	5.7 x 3.4	18' 6" x 11' 0"	Bedroom 1	3.5 x 3.4	11' 4" x 11' 1"
Sitting room	5.7 x 3.1	18' 6" x 10' 1"	Bedroom 2	3.4 x 3.3	11' 1" x 11' 0"
			Bedroom 3	3.4 x 2.2	11' 1" x 7' 2"

<	>	measuring points	ds	dishwasher space
ws	h	washing machine space	cup'd	cupboard
ovn	ldr	oven	ldr	larder
ffzs		fridge freezer space	ts	tumble dryer space

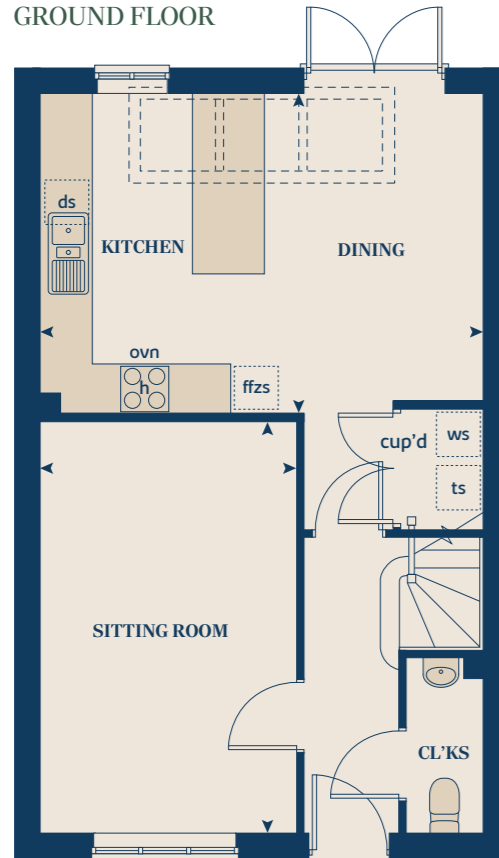
The Kingfisher | King George Park The floorplan has been produced for illustrative purposes only. Room sizes shown are between arrow points as indicated on plan. The dimensions have tolerances of + or -50mm and should not be used other than for general guidance. If specific dimensions are required, enquiries should be made to the sales consultant. The floor plans shown are not to scale. Measurements are based on the original drawings. Slight variations may occur during construction. The illustrations shown are computer generated impressions of how the property may look and are indicative only. External details or finishes may vary on individual plots and homes may be built in either detached or attached styles depending on the development layout. Exact specifications, window styles and whether a property is left or right-handed may differ from plot to plot. Please speak to our sales consultant for specific plot details.



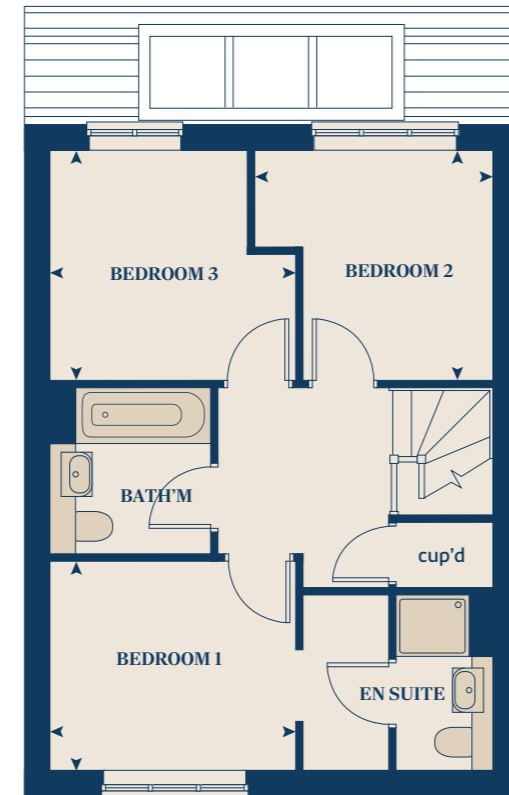
THE BROOK

3 bedroom home

GROUND FLOOR



FIRST FLOOR



GROUND FLOOR		FIRST FLOOR	
METRES	FEET/INCHES	METRES	FEET/INCHES
Kitchen / dining room	5.5 x 3.9	18' 1" x 12' 8"	
Sitting room	5.1 x 3.2	16' 7" x 10' 4"	
		Bedroom 1	3.0 x 2.6
		Bedroom 2	2.9 x 2.8
		Bedroom 3	3.0 x 2.8

◀ ▶	measuring points	ovn	oven
ws	washing machine space	ffzs	fridge freezer space
ts	tumble dryer space	ds	dishwasher space
h	hob	cup'd	cupboard

The Brook | King George Park The floorplan has been produced for illustrative purposes only. Room sizes shown are between arrow points as indicated on plan. The dimensions have tolerances of + or -50mm and should not be used other than for general guidance. If specific dimensions are required, enquiries should be made to the sales consultant. The floor plans shown are not to scale. Measurements are based on the original drawings. Slight variations may occur during construction. The illustrations shown are computer generated impressions of how the property may look and are indicative only. External details or finishes may vary on individual plots and homes may be built in either detached or attached styles depending on the development layout. Exact specifications, window styles and whether a property is left or right-handed may differ from plot to plot. Please speak to our sales consultant for specific plot details.



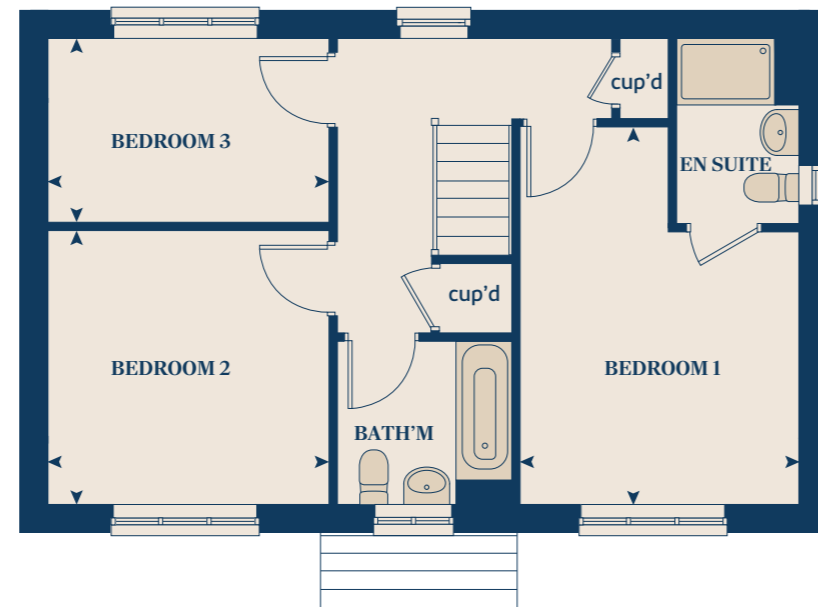
THE KITTIWAKE

3 bedroom home

GROUND FLOOR



FIRST FLOOR



GROUND FLOOR	METRES	FEET/INCHES	FIRST FLOOR	METRES	FEET/INCHES
Kitchen / dining room	5.6 x 3.3	18' 3" x 10' 8"	Bedroom 1	4.5 x 3.4	14' 7" x 11' 1"
Sitting room	5.6 x 3.1	18' 3" x 10' 1"	Bedroom 2	3.4 x 3.3	11' 1" x 10' 8"
			Bedroom 3	3.4 x 2.2	11' 1" x 7' 2"

< >	measuring points	ds	dishwasher space
ws	washing machine space	cup'd	cupboard
h	hob	ldr	larder
ovn	oven	ts	tumble dryer space
ffzs	fridge freezer space		

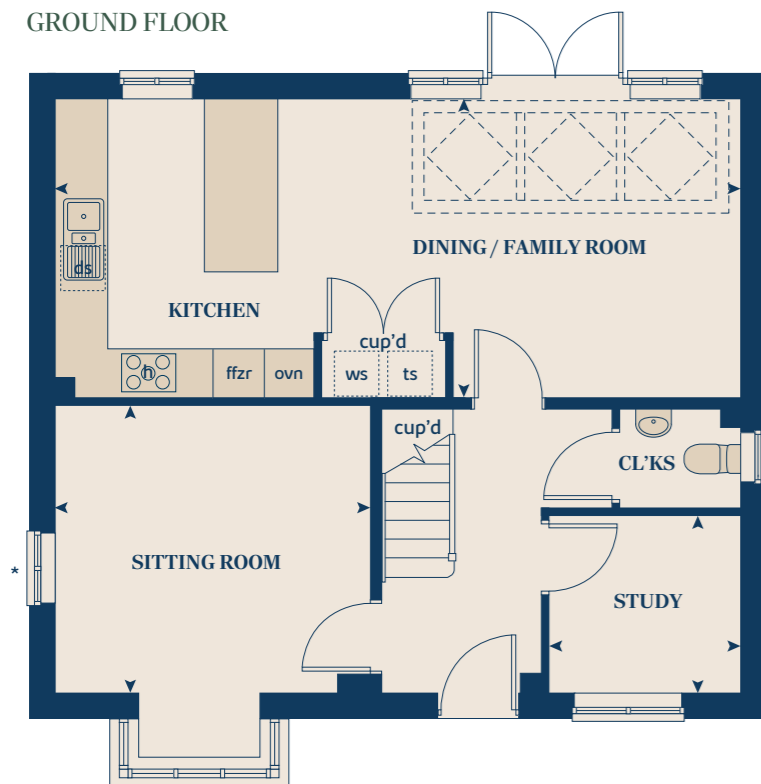
The Kittiwake | King George Park The floorplan has been produced for illustrative purposes only. Room sizes shown are between arrow points as indicated on plan. The dimensions have tolerances of + or -50mm and should not be used other than for general guidance. If specific dimensions are required, enquiries should be made to the sales consultant. The floor plans shown are not to scale. Measurements are based on the original drawings. Slight variations may occur during construction. The illustrations shown are computer generated impressions of how the property may look and are indicative only. External details or finishes may vary on individual plots and homes may be built in either detached or attached styles depending on the development layout. Exact specifications, window styles and whether a property is left or right-handed may differ from plot to plot. Please speak to our sales consultant for specific plot details.



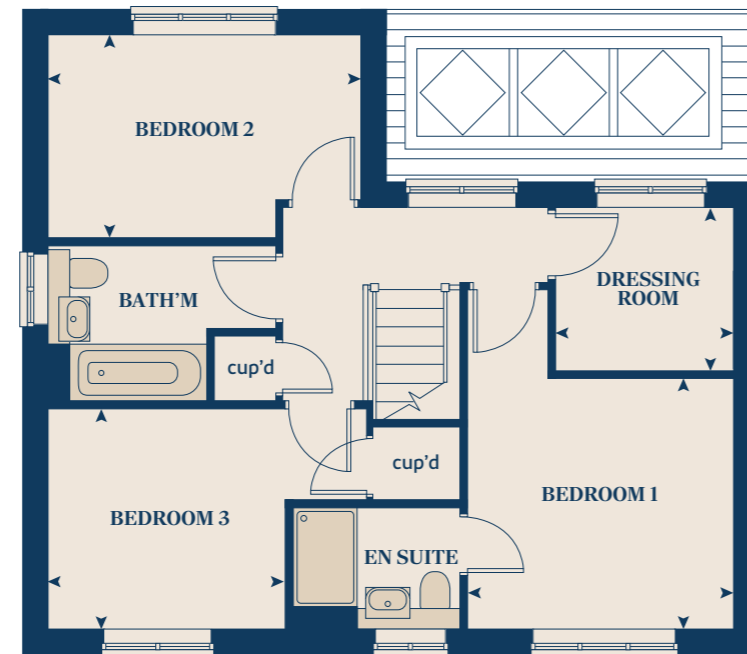
THE BOWMONT

3 bedroom home

GROUND FLOOR



FIRST FLOOR



GROUND FLOOR	METRES	FEET/INCHES
Kitchen/dining/family room	8.4 x 3.6	27' 5" x 11' 8"
Sitting room	3.9 x 3.5	12' 7" x 11' 4"
Study	2.3 x 2.2	7' 6" x 7' 1"

FIRST FLOOR	METRES	FEET/INCHES
Bedroom 1	3.3 x 3.0	10' 6" x 10' 0"
Bedroom 2	3.8 x 2.4	12' 4" x 7' 8"
Bedroom 3	2.9 x 2.7	9' 9" x 8' 8"
Dressing room	2.2 x 2.0	7' 0" x 6' 5"

◀ ▶	measuring points	ovn	oven
ws	washing machine space	ffzr	fridge freezer
ts	tumble dryer space	ds	dishwasher space
h	hob	cup'd	cupboard

* Window applies to selected plots only. Please speak to a sales consultant for further details.

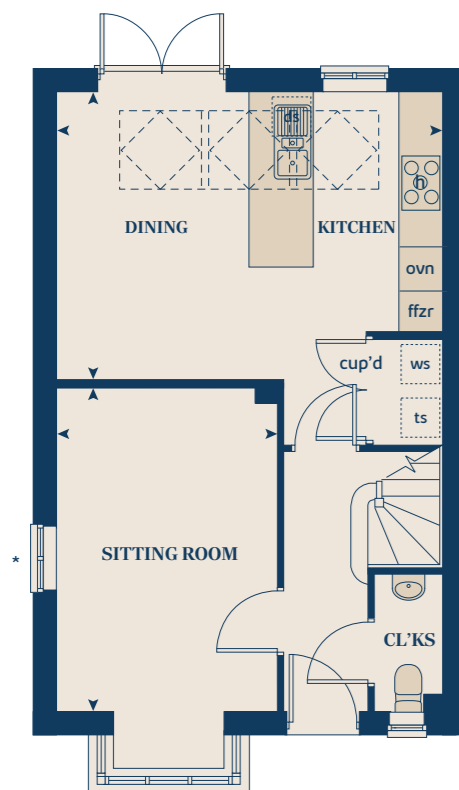
The Bowmont | King George Park The floorplan has been produced for illustrative purposes only. Room sizes shown are between arrow points as indicated on plan. The dimensions have tolerances of + or -50mm and should not be used other than for general guidance. If specific dimensions are required, enquiries should be made to the sales consultant. The floor plans shown are not to scale. Measurements are based on the original drawings. Slight variations may occur during construction. The illustrations shown are computer generated impressions of how the property may look and are indicative only. External details or finishes may vary on individual plots and homes may be built in either detached or attached styles depending on the development layout. Exact specifications, window styles and whether a property is left or right-handed may differ from plot to plot. Please speak to our sales consultant for specific plot details.



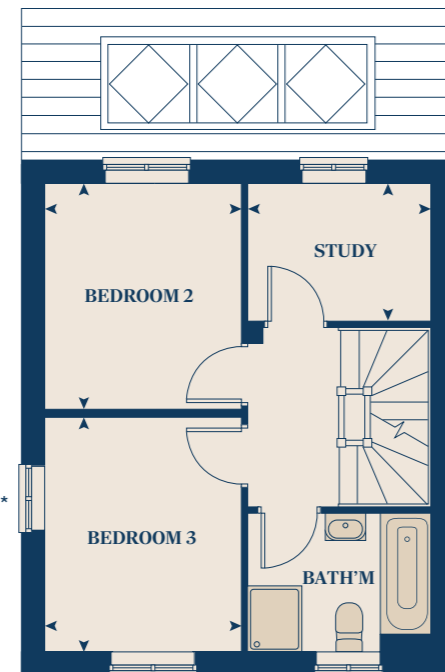
THE DUNHAM

3 bedroom home

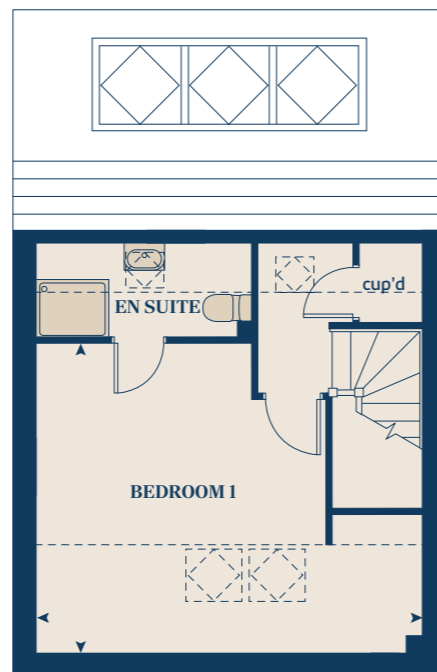
GROUND FLOOR



FIRST FLOOR



SECOND FLOOR



GROUND FLOOR	METRES	FEET/INCHES
Kitchen / dining room	5.3 x 4.0	17' 4" x 13' 0"
Sitting room	4.5 x 3.1	14' 7" x 10' 1"

FIRST FLOOR	METRES	FEET/INCHES
Bedroom 2	3.1 x 2.7	10' 1" x 9' 1"
Bedroom 3	3.2 x 2.7	10' 4" x 9' 1"
Study	2.5 x 1.9	8' 2" x 6' 2"

SECOND FLOOR	METRES	FEET/INCHES
Bedroom 1	5.3 x 4.3	17' 4" x 14' 1"

◀ ▶	measuring points	ovn	oven
ws	washing machine space	ffzr	fridge freezer
ts	tumble dryer space	ds	dishwasher space
h	hob	cup'd	cupboard

* Window applies to selected plots only. Please speak to a sales consultant for further details.

The Dunham | King George Park The floorplan has been produced for illustrative purposes only. Room sizes shown are between arrow points as indicated on plan. The dimensions have tolerances of + or -50mm and should not be used other than for general guidance. If specific dimensions are required, enquiries should be made to the sales consultant. The floor plans shown are not to scale. Measurements are based on the original drawings. Slight variations may occur during construction. The illustrations shown are computer generated impressions of how the property may look and are indicative only. External details or finishes may vary on individual plots and homes may be built in either detached or attached styles depending on the development layout. Exact specifications, window styles and whether a property is left or right-handed may differ from plot to plot. Please speak to our sales consultant for specific plot details.



THE OAKLEY

4 bedroom home



GROUND FLOOR		FIRST FLOOR	
	METRES	FEET/INCHES	
Kitchen / dining room	6.1 x 3.9	19' 9" x 12' 6"	Bedroom 1
Sitting room	4.2 x 3.9	13' 7" x 12' 7"	Bedroom 2
			Bedroom 3
			Bedroom 4

* Window applies to selected plots only. Please speak to a sales consultant for further details.

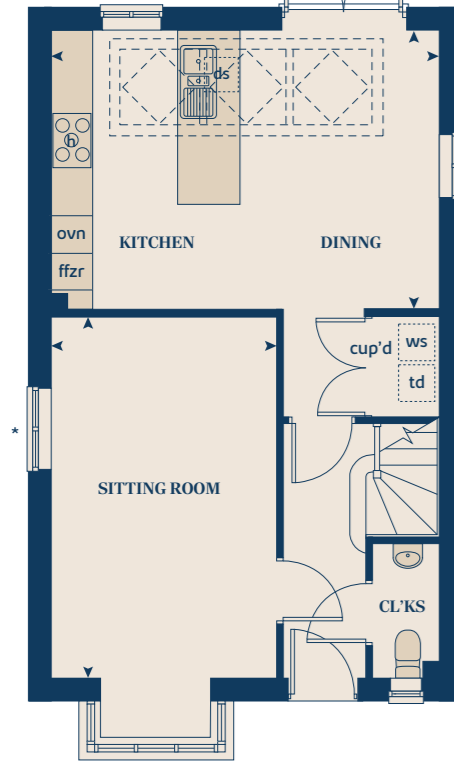
The Oakley | King George Park The floorplan has been produced for illustrative purposes only. Room sizes shown are between arrow points as indicated on plan. The dimensions have tolerances of + or -50mm and should not be used other than for general guidance. If specific dimensions are required, enquiries should be made to the sales consultant. The floor plans shown are not to scale. Measurements are based on the original drawings. Slight variations may occur during construction. The illustrations shown are computer generated impressions of how the property may look and are indicative only. External details or finishes may vary on individual plots and homes may be built in either detached or attached styles depending on the development layout. Exact specifications, window styles and whether a property is left or right-handed may differ from plot to plot. Please speak to our sales consultant for specific plot details.



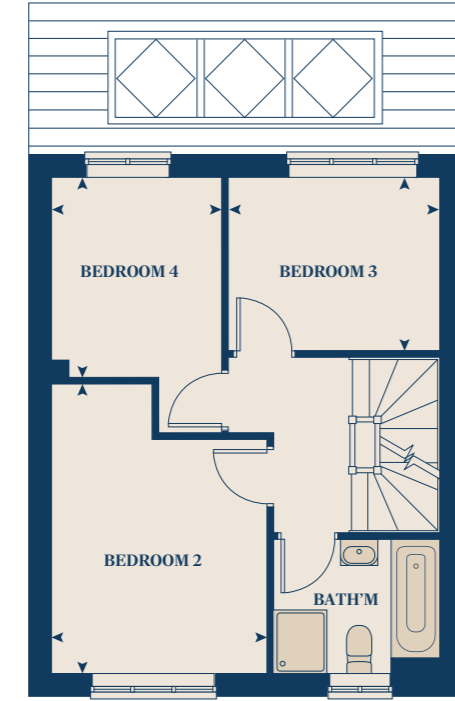
THE WINSTER

4 bedroom home

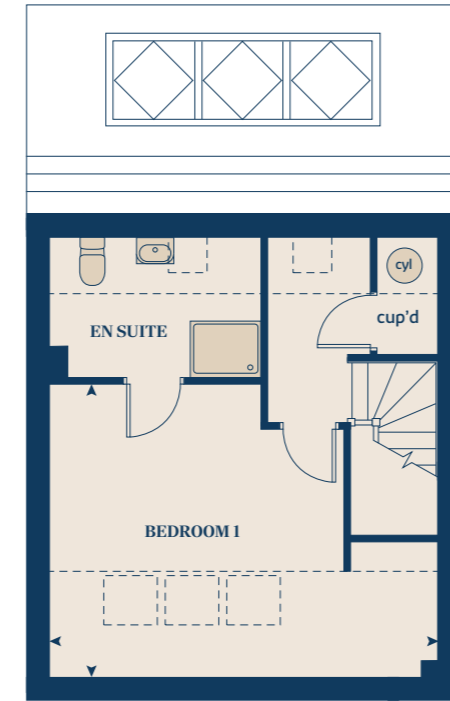
GROUND FLOOR



FIRST FLOOR



SECOND FLOOR



GROUND FLOOR

	METRES	FEET/INCHES
Kitchen / dining room	5.5 x 3.9	18' 1" x 12' 7"
Sitting room	5.1 x 3.2	16' 7" x 10' 4"

FIRST FLOOR

	METRES	FEET/INCHES
Bedroom 2	4.1 x 3.1	13' 4" x 10' 1"
Bedroom 3	3.0 x 2.5	9' 8" x 8' 2"
Bedroom 4	2.8 x 2.4	9' 1" x 7' 9"

SECOND FLOOR

	METRES	FEET/INCHES
Bedroom 1	5.5 x 4.1	18' 3" x 13' 6"

◀ ▶	measuring points	ffzr	fridge freezer
ws	washing machine space	ds	dishwasher space
ts	tumble dryer space	cup'd	cupboard
h	hob	cyl	cylinder
ovn	oven		

* Window applies to selected plots only. Please speak to a sales consultant for further details.

The Winster | King George Park The floorplan has been produced for illustrative purposes only. Room sizes shown are between arrow points as indicated on plan. The dimensions have tolerances of + or -50mm and should not be used other than for general guidance. If specific dimensions are required, enquiries should be made to the sales consultant. The floor plans shown are not to scale. Measurements are based on the original drawings. Slight variations may occur during construction. The illustrations shown are computer generated impressions of how the property may look and are indicative only. External details or finishes may vary on individual plots and homes may be built in either detached or attached styles depending on the development layout. Exact specifications, window styles and whether a property is left or right-handed may differ from plot to plot. Please speak to our sales consultant for specific plot details.



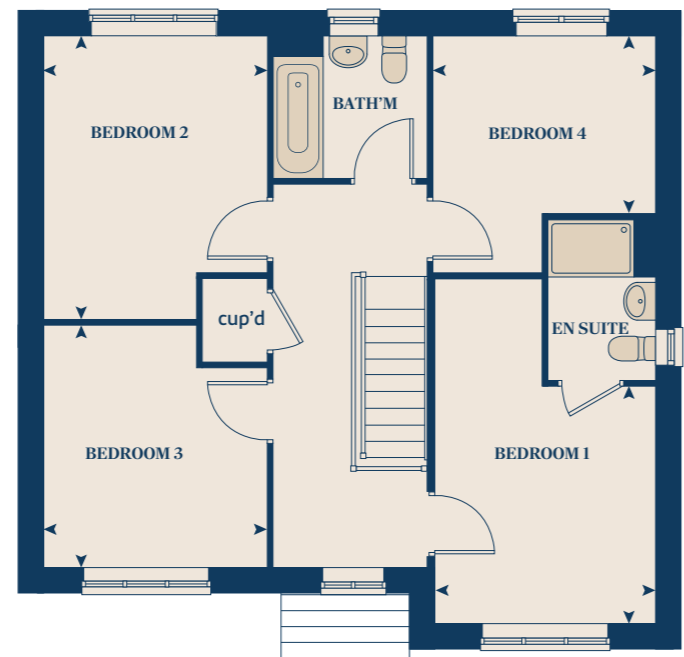
THE SANDPIPER

4 bedroom home

GROUND FLOOR



FIRST FLOOR



GROUND FLOOR	METRES	FEET/INCHES	FIRST FLOOR	METRES	FEET/INCHES
Kitchen/dining/family room	8.5 x 3.2	27' 8" x 10' 4"	Bedroom 1	3.3 x 3.1	10' 8" x 10' 1"
Sitting room	4.8 x 3.1	15' 7" x 10' 1"	Bedroom 2	3.9 x 3.1	12' 7" x 10' 1"
Study	3.3 x 2.0	10' 8" x 6' 6"	Bedroom 3	3.4 x 3.1	11' 1" x 10' 1"
			Bedroom 4	3.1 x 2.5	10' 1" x 8' 2"

◀ ▶	measuring points	ffzr	fridge freezer
ws	washing machine space	ds	dishwasher space
h	hob	cup'd	cupboard
ovn	oven		

* Window applies to selected plots only. Please speak to a sales consultant for further details.

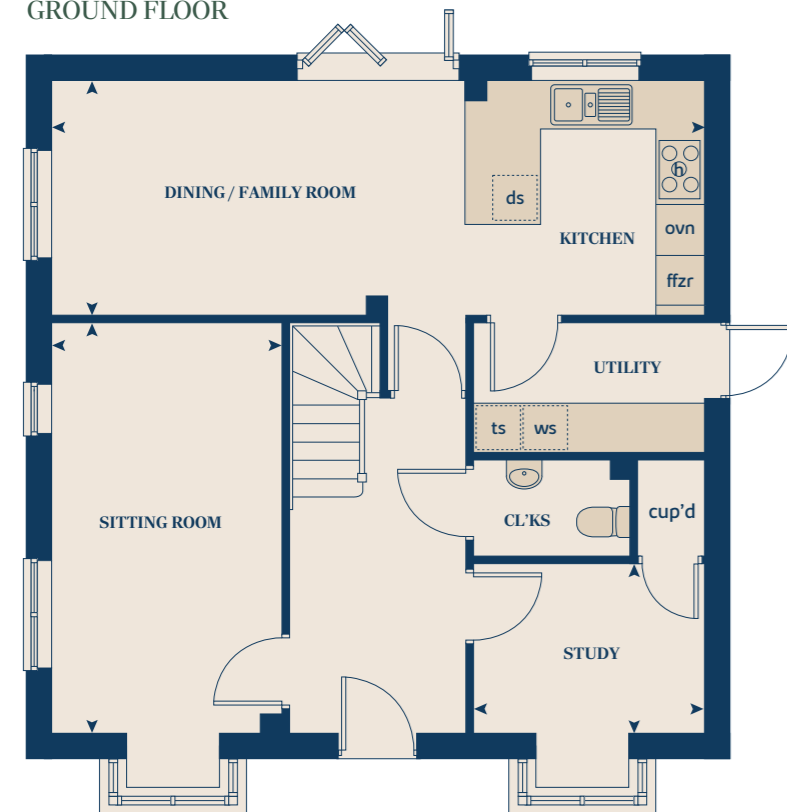
The Sandpiper | King George Park The floorplan has been produced for illustrative purposes only. Room sizes shown are between arrow points as indicated on plan. The dimensions have tolerances of + or -50mm and should not be used other than for general guidance. If specific dimensions are required, enquiries should be made to the sales consultant. The floor plans shown are not to scale. Measurements are based on the original drawings. Slight variations may occur during construction. The illustrations shown are computer generated impressions of how the property may look and are indicative only. External details or finishes may vary on individual plots and homes may be built in either detached or attached styles depending on the development layout. Exact specifications, window styles and whether a property is left or right-handed may differ from plot to plot. Please speak to our sales consultant for specific plot details.



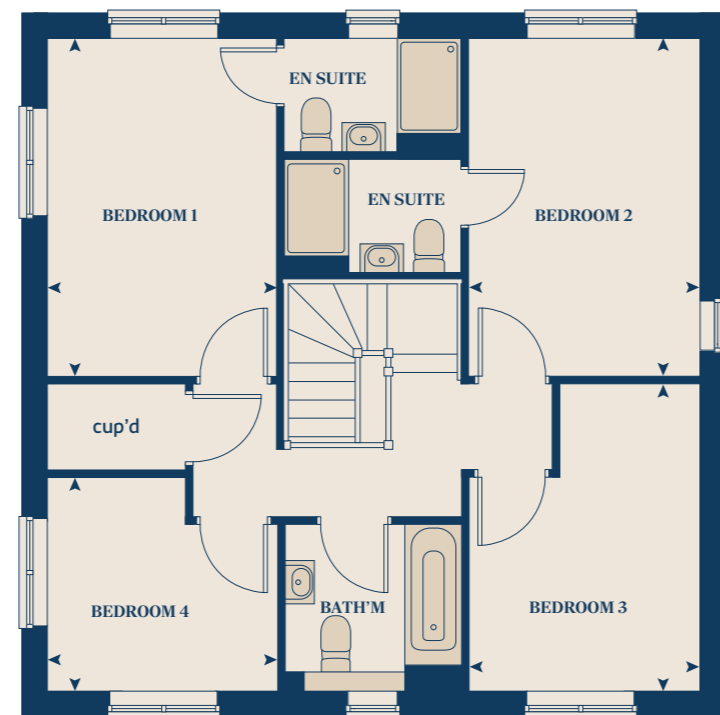
THE GATEHOUSE

4 bedroom home

GROUND FLOOR



FIRST FLOOR



GROUND FLOOR	METRES	FEET/INCHES
Kitchen/dining/family room	8.1 x 2.9	26' 5" x 9' 5"
Sitting room	5.1 x 2.9	16' 7" x 9' 5"
Study	2.8 x 2.1	9' 1" x 6' 8"

FIRST FLOOR	METRES	FEET/INCHES
Bedroom 1	4.2 x 2.9	13' 7" x 9' 5"
Bedroom 2	4.2 x 2.9	13' 7" x 9' 5"
Bedroom 3	3.8 x 2.9	12' 4" x 9' 5"
Bedroom 4	2.9 x 2.6	9' 5" x 8' 5"

◀ ▶	measuring points	ovn	oven
ws	washing machine space	ffzr	fridge freezer
ts	tumble dryer space	ds	dishwasher space
h	hob	cup'd	cupboard

The Gatehouse | King George Park The floorplan has been produced for illustrative purposes only. Room sizes shown are between arrow points as indicated on plan. The dimensions have tolerances of + or -50mm and should not be used other than for general guidance. If specific dimensions are required, enquiries should be made to the sales consultant. The floor plans shown are not to scale. Measurements are based on the original drawings. Slight variations may occur during construction. The illustrations shown are computer generated impressions of how the property may look and are indicative only. External details or finishes may vary on individual plots and homes may be built in either detached or attached styles depending on the development layout. Exact specifications, window styles and whether a property is left or right-handed may differ from plot to plot. Please speak to our sales consultant for specific plot details.



THE ROBIN

4 bedroom home

GROUND FLOOR



FIRST FLOOR



GROUND FLOOR	METRES	FEET/INCHES
Kitchen/dining/family room	6.0 x 3.7	19' 6" x 12' 1"
Sitting room	5.3 x 3.2	17' 3" x 10' 4"
Dining room	3.6 x 2.6	11' 1" x 8' 1"

FIRST FLOOR	METRES	FEET/INCHES
Bedroom 1	5.3 x 3.2	17' 3" x 10' 4"
Bedroom 2	3.6 x 3.1	11' 8" x 10' 1"
Bedroom 3	3.1 x 2.9	10' 1" x 9' 5"
Bedroom 4	2.9 x 2.7	9' 1" x 8' 1"

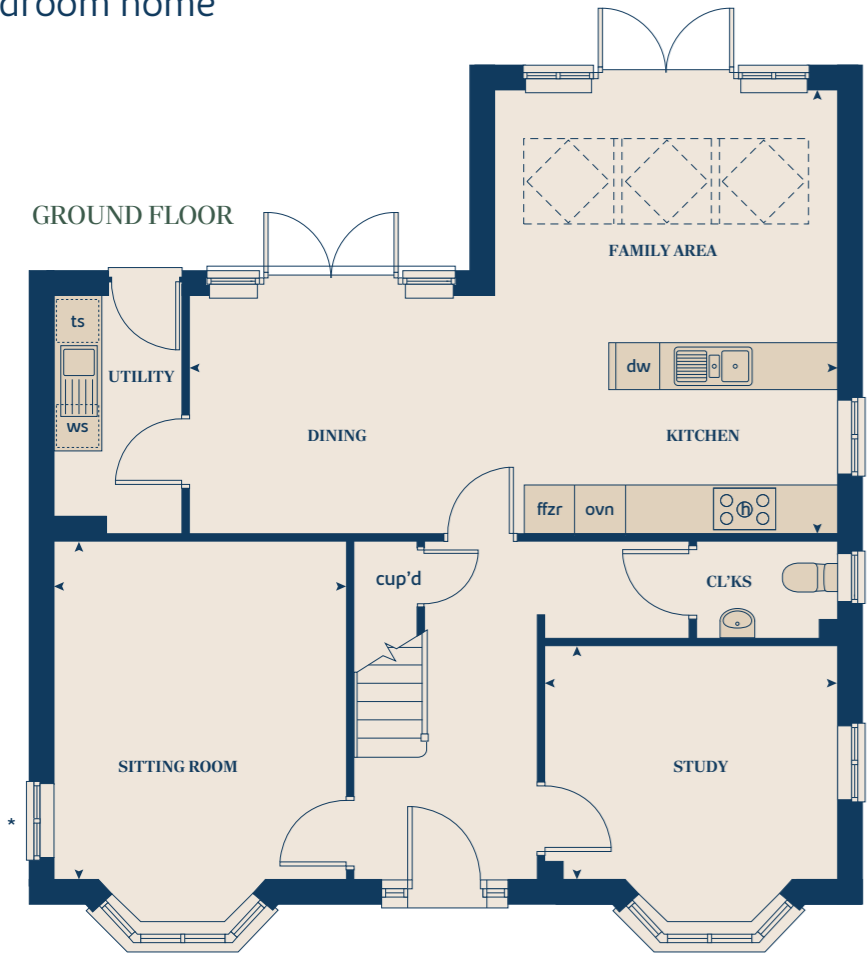
< >	measuring points	ffzr	fridge freezer
ws	washing machine space	ds	dishwasher space
h	hob	cup'd	cupboard
ovn	oven		

The Robin | King George Park The floorplan has been produced for illustrative purposes only. Room sizes shown are between arrow points as indicated on plan. The dimensions have tolerances of + or -50mm and should not be used other than for general guidance. If specific dimensions are required, enquiries should be made to the sales consultant. The floor plans shown are not to scale. Measurements are based on the original drawings. Slight variations may occur during construction. The illustrations shown are computer generated impressions of how the property may look and are indicative only. External details or finishes may vary on individual plots and homes may be built in either detached or attached styles depending on the development layout. Exact specifications, window styles and whether a property is left or right-handed may differ from plot to plot. Please speak to our sales consultant for specific plot details.



THE HESTERCOMBE

5 bedroom home



GROUND FLOOR	METRES	FEET/INCHES	FIRST FLOOR	METRES	FEET/INCHES
Kitchen/dining/family room	8.3 x 5.5	27' 2" x 18' 0"	Bedroom 1	4.2 x 3.0	13' 7" x 9' 8"
Sitting room	4.2 x 3.6	13' 7" x 11' 8"	Bedroom 2	3.2 x 2.6	10' 5" x 8' 7"
Study	3.6 x 2.9	11' 8" x 9' 6"	Bedroom 3	3.1 x 2.9	10' 1" x 9' 5"
			Bedroom 4	3.0 x 2.7	9' 8" x 8' 9"
			Bedroom 5	3.8 x 1.9	12' 4" x 6' 2"

◀ ▶	measuring points	ovn	oven
ws	washing machine space	ffzr	fridge freezer
ts	tumble dryer space	dw	dishwasher
h	hob	cup'd	cupboard

* Windows apply to selected plots only. Please speak to a sales consultant for further details.

The Hestercombe | King George Park The floorplan has been produced for illustrative purposes only. Room sizes shown are between arrow points as indicated on plan. The dimensions have tolerances of + or -50mm and should not be used other than for general guidance. If specific dimensions are required, enquiries should be made to the sales consultant. The floor plans shown are not to scale. Measurements are based on the original drawings. Slight variations may occur during construction. The illustrations shown are computer generated impressions of how the property may look and are indicative only. External details or finishes may vary on individual plots and homes may be built in either detached or attached styles depending on the development layout. Exact specifications, window styles and whether a property is left or right-handed may differ from plot to plot. Please speak to our sales consultant for specific plot details.



A UNIQUE SPECIFICATION

Every home comes thoughtfully designed and beautifully appointed with a high-quality standard specification that reflects our commitment to craftsmanship and comfort. From sleek, contemporary kitchens, to stylish bathrooms featuring modern fittings and elegant tiling, every detail has been carefully considered.

Energy-efficient heating systems, double-glazed windows, and superior insulation ensure your home is as practical as it is beautiful. With a focus on both form and function, our standard specification offers everything you need to move in and start enjoying your new lifestyle from day one.

- Fitted as standard - included in the property
- * Subject to stage of construction
- ^ Selected homes exclude glass splashback

This specification indicates, by means of a dot (■), the items that are included within the home. If there is no dot in a column, the item is not included. Any item not expressly listed or indicated within this specification is excluded from the standard build. For information on the Select upgrade options available depending on build stage, please speak with a sales consultant.

The availability of some items is subject to the stage of build, but our sales consultants will be happy to provide guidance every step of the way. The specification shown in this leaflet is correct at the time of going to press. Bovis Homes is continually reviewing and updating the specification on all housetypes and therefore reserves the right to change specification details. Photographs depict a typical Bovis Homes interior and may include optional upgrades. For full details regarding current specification and finishes, for the plots you are interested in, please refer to our sales consultant.

	3 bedroom						4 bedroom					5 bedroom	
	THE PARTRIDGE	THE CLAVERTON	THE KINGFISHER	THE BROOK	THE KITTIWAKE	THE DUNHAM	THE BOWMONT	THE OAKLEY	THE WINSTER	THE SANDPIPER	THE GATEHOUSE	THE ROBIN	THE HESTERCOMBE
KITCHEN													
Choice of standard fitted kitchen (doors & worktops)	■	■	■	■	■	■	■	■	■	■	■	■	■
Choice of Premium fitted kitchen (doors & worktops)													■
Stainless steel sink and drainer (single and a half bowl) with chrome mixer tap	■	■	■	■	■	■	■	■	■	■	■	■	■
Stainless steel sink and drainer (single bowl) with chrome mixer tap in utility													■
Indesit hob with built-in single Indesit under worktop oven, stainless steel splashback and curved glass chimney hood	■	■	■	■	■								
Hotpoint hob with built-in Hotpoint double high level oven, with glass splashback and curved glass chimney hood^								■	■	■	■	■	
Bosch hob with built-in Bosch double high level oven, with glass splashback and pyramid chimney hood													■
Fridge / freezer space	■	■	■	■	■								
Indesit Integrated 50 / 50 fridge freezer								■	■	■	■	■	■
Space for integrated dishwasher with plumbing and electrics	■	■	■	■	■	■	■	■	■	■	■	■	■
Indesit Integrated dishwasher													■
Space for washing machine with plumbing and electrics	■	■	■	■	■	■	■	■	■	■	■	■	■
BATHROOMS AND EN SUITE(S)													
Ideal Standard contemporary white Concept Air sanitaryware	■	■	■	■	■	■	■	■	■	■	■	■	■
Ideal Standard close coupled WC to cloakroom	■	■	■	■	■	■	■	■	■	■	■	■	■
Handheld hair wash attachment in bathroom	■	■	■	■	■	■	■	■	■	■	■	■	■
Rainhead shower to en suite								■	■	■	■	■	■

	3 bedroom						4 bedroom					5 bedroom	
	THE PARTRIDGE	THE CLAVERTON	THE KINGFISHER	THE BROOK	THE KITTIWAKE	THE DUNHAM	THE BOWMONT	THE OAKLEY	THE WINSTER	THE SANDPIPER	THE GATEHOUSE	THE ROBIN	THE HESTERCOMBE
BATHROOMS AND EN SUITE(S) CONTINUED													
Second shower en suite to selected bedrooms												■	■
Choice of standard Porcelanosa wall tiling (splashback, 450mm over bath, and full-height to shower cubicle)*	■	■	■	■	■	■	■	■	■	■	■	■	■
Choice of standard Porcelanosa wall tiling (half-height to walls with fitted sanitary ware, half-height over bath, and full-height to shower cubicle)*													■
Chrome towel warmer in bathroom and en suite(s)							■	■	■	■	■	■	■
DOORS AND WINDOWS													
Double glazed PVCu French doors	■	■	■	■	■	■	■	■	■	■	■	■	■
Powder coated aluminium double glazed bi-fold doors										■			■
GENERAL													
PV solar panels	■	■	■	■	■	■	■	■	■	■	■	■	■
Gas central heating with wall mounted combi-boiler with programme selector	■	■	■	■	■	■	■	■	■	■	■	■	■
Gas central heating with wall mounted boiler and separate hot water cylinder with programme selector									■				
Outside tap	■	■	■	■	■	■	■	■	■	■	■	■	■
External light fitted to front porch and wiring for external light to rear door	■	■	■	■	■	■	■	■	■	■	■	■	■
Electric vehicle charging point	■	■	■	■	■	■	■	■	■	■	■	■	■
NHBC Buildmark cover	■	■	■	■	■	■	■	■	■	■	■	■	■
First two years' customer service support from Bovis Homes	■	■	■	■	■	■	■	■	■	■	■	■	■



TIMBER FRAME HOMES - BUILT FOR YOUR LIFE

Bring Your Dream Home to Life with Select

At King George Park, your new home already comes with a unique and thoughtfully designed specification - but with our **exclusive Select** range, you can go even further.

This is your opportunity to add those special touches that make a house feel like home. Whether it's a sleek, contemporary kitchen with upgraded premium worktops and the latest appliances, or a bathroom finished with elegant ceramics, Select gives you the freedom to shape every detail.

From kitchen cupboards and lighting to built-in wardrobes and flooring, you'll find a wide range of beautiful options to suit your style. Choose from plush carpets, stylish Amtico flooring, or timeless ceramic tiles - each one helping to create a space that reflects you.

Every choice you make brings your vision closer to reality. And with the guidance of our friendly sales consultants, you'll have expert support every step of the way.

Pick up a **Select** brochure from your sales consultant today to find an extensive list of items available. Such as:

- **Quartz kitchen worktops**
- **Premium appliance packages**
- **Flooring**
- **Built-in wardrobes**
- **Upgraded tiling in main bathroom and en suite**

The availability of items is subject to the stage of build and can vary by development and housetype. Our sales consultants will be pleased to provide you with a full brochure and guidance.



MAKE YOUR NEW HOME TRULY YOURS WITH UPGRADES AND EXTRAS FROM OUR EXCLUSIVE **SELECT** RANGE

Bring Your Dream Home to Life with Select

At King George Park, your new home already comes with a unique and thoughtfully designed specification - but with our **exclusive Select** range, you can go even further.

This is your opportunity to add those special touches that make a house feel like home. Whether it's a sleek, contemporary kitchen with upgraded premium worktops and the latest appliances, or a bathroom finished with elegant ceramics, Select gives you the freedom to shape every detail.

From kitchen cupboards and lighting to built-in wardrobes and flooring, you'll find a wide range of beautiful options to suit your style. Choose from plush carpets, stylish Amtico flooring, or timeless ceramic tiles - each one helping to create a space that reflects you.

Every choice you make brings your vision closer to reality. And with the guidance of our friendly sales consultants, you'll have expert support every step of the way.

Pick up a **Select** brochure from your sales consultant today to find an extensive list of items available. Such as:

- **Quartz kitchen worktops**
- **Premium appliance packages**
- **Flooring**
- **Built-in wardrobes**
- **Upgraded tiling in main bathroom and en suite**

The availability of items is subject to the stage of build and can vary by development and housetype. Our sales consultants will be pleased to provide you with a full brochure and guidance.



A COMMUNITY TO BE PROUD OF











We believe that a truly special home extends beyond its walls - it's shaped by the community and environment that surround it. At King George Park, we're proud to do more than build beautiful homes; we invest in the future of the area and the people who live here. Working closely with the local council, contributions are tailored to meet the unique needs of the growing community, ensuring every commitment makes a meaningful difference. From enhancing green spaces to supporting local services, we've contributed towards over **£50 million** into local initiatives that nurture both community spirit and environmental wellbeing.









Because when you move into a Bovis home, you're not just moving into a home - you're joining a community and becoming part of something truly lasting at **King George Park**.

Our homes are **Greener by Design!** From solar panels, high class insulation and EV charging points, our homes have everything you need to save on your energy bills. Our homes are **Greener by Design!** From solar panels, high class insulation and EV charging points, our homes have everything you need to save on your energy bills.

COMMUNITY CONTRIBUTIONS INCLUDE:

IMPROVED PUBLIC TRANSPORT FACILITIES 	PUBLIC OPEN SPACES 	NEW COMMUNITY FACILITIES 	CYCLE ROUTES 
PRIMARY AND SECONDARY EDUCATION 	CHILDREN'S PLAY AREAS 	HEALTHCARE FACILITIES 	HIGHWAY AND ROAD IMPROVEMENT 

GREEN INITIATIVES FOUND AT KING GEORGE PARK:

HEDGEHOG HIGHWAYS 	WASTE WATER HEAT RECOVERY SYSTEMS 	ELECTRIC VEHICLE CHARGING POINTS 	NEW TREES PLANTED 
PV SOLAR PANELS 	BAT / BIRD BOXES 	A+ RATED DOUBLE-GLAZED WINDOWS 	TIMBER FRAME CARBON REDUCTION 



PURCHASE ASSISTANCE SCHEMES

No matter where you are on your home-buying journey - taking your first step, moving up the ladder, or looking to rightsize - we've got a range of fantastic purchase assistance schemes designed to make your move smoother and more achievable.

SMOOTH MOVE

Smooth Move is our scheme for all existing property owners to save time and money. We deal with the estate agents to sell your home and even pay the estate agents' fees!



HOME EXCHANGE

With Home Exchange you can have peace of mind knowing that we are your guaranteed buyer, meaning you'll have a chain-free move without the estate agents' fees.



KEY WORKER

Helping essential key workers get on the housing ladder with assistance from Bovis Homes and access to purchase assistance schemes requiring as little as a 5% deposit.



ARMED FORCES

Helping members of the Armed Forces to own a home with assistance from Bovis Homes, the government and the Ministry of Defence.



DEPOSIT UNLOCK

With Deposit Unlock, whether you are a first time or next time buyer, you could purchase a new Bovis Home with just a 5% deposit up to the value of £750,000!



SCAN FOR DIRECTIONS



KING GEORGE PARK

Wanborough Road,
Lotmead,
Swindon
SN4 0SN

01793 352 457

Every care has been taken in the preparation of this brochure. Bovis Homes operates a programme of continuous product development. Features, internal and external, may vary from time to time and may differ from those shown in this brochure. The development layout, landscaping and tenure of all dwellings may be subject to change throughout the course of the development.

Computer generated images, maps, photography, and imagery are intended for illustrative purposes. Features, designs, materials, and visual depictions must be treated as general guidance only. Please speak to a sales consultant for details of specific homes.

Vistry Cotswolds region

Cleeve Hall, Cheltenham Road, Bishop's Cleeve, Cheltenham, Gloucestershire GL52 8GD. Telephone: 01242 388 502

Produced by the Vistry Design Studio.

When you have finished with this brochure please recycle it.

DS16062 / 04.26


Bovis Homes
Est. 1885