

Buckley Place

Site Update



Keeping you updated

We wanted to provide you with an update on the development and what you can expect from us over the coming months.

Buckley Place in Hullavington

Buckley Place is an impressive development of 3, 4 and 5-bedroom new homes in the beautiful Wiltshire village of Hullavington. The development will provide a beautiful large public open space as well as an attenuation pond.

**The Street, Hullavington,
Chippenham, SN14 6EF**

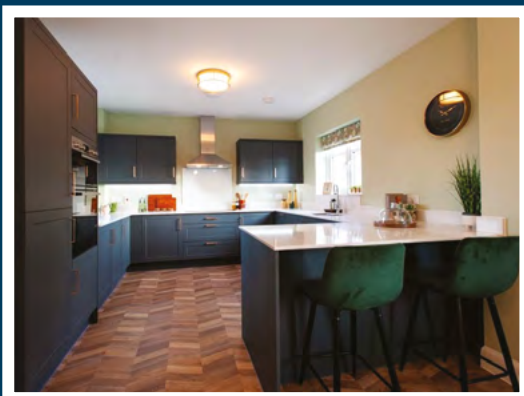
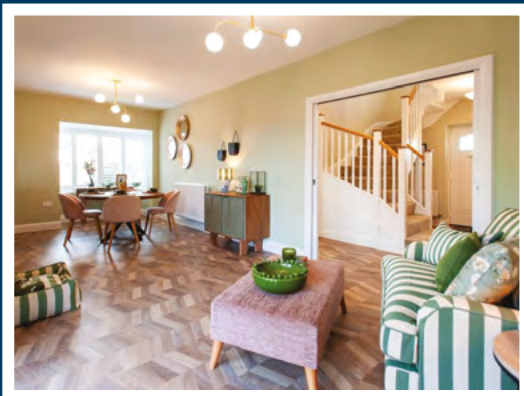
Management Agent

The managing agent is Remus and the management company is Buckley Management Company.

Services

The current service providers are:

- Electric is British gas
- Water is Awin
- Broadband BT



Site activity and timeline

- 75% of the stormwater infrastructure has been completed, with full completion expected by summer 2026. The pump station and foul drainage line have now been installed.
- Roads are currently being tarmacked up to base level, with final surface topping to be completed at a later date; no confirmed programme is in place at this stage. Approximately 75% of the community parking has been formed, including the area surrounding the sales centre.
- All utility services are now installed, enabling first occupations to take place in June 2026. Street lighting will be installed over the coming months in line with the completion of individual plots.

Thank you for your patience while the construction work is taking place. We try to keep disruption to a minimum but appreciate it can be noisy and dirty at times so do contact us if you have any questions, or if you'd like to provide any feedback, by emailing:

✉ customerservice.bristol@vistry.co.uk

Bovis Homes 