

# Walstead Park

Lindfield





# Walstead Park

Lindfield

A taste of local life

[bovishomes.co.uk](http://bovishomes.co.uk)

**Bovis  
Homes** 





# Welcome to Walstead Park

This exciting new development is just 1 mile from the pretty village of Lindfield in West Sussex, close to the High Weald Area of Outstanding Natural Beauty and within easy reach of Brighton and less than 1 hour by rail to London Victoria

Walstead Park in Scaynes Hill Road, is only a few minutes' drive from historic Lindfield, an historic village built above the scenic River Ouse. The village has shops, pubs, cafes, schools, sports clubs - a picturesque duck pond, a common and the 8-acre Eastern Road Nature Reserve.

In the nearby town of Hayward's Heath, with its peaceful Conservation Area of Muster Green, you'll find restaurants, bistros, wine bars, the pedestrianised Orchards Shopping Centre and entertainment venue Clair Hall. There are leisure centres, sports clubs, a 20-kilometre cycle trail and relaxing parks and gardens to visit.

From Hayward's Heath Railway Station trains run to London Victoria, taking about 45-minutes, and to Brighton, 14 miles, in about 15-minutes. The A272 links the area to the A23 for Brighton and the M23 for Crawley, 14 miles and Gatwick Airport, 18 miles.

Our range of 3, 4 & 5 bedroom homes embrace contemporary design, while retaining classic architecture and traditional build quality. They include popular features such as open-plan living areas, stylish fitted kitchens, bi-fold doors and spacious master bedrooms with en suites.

So, if you're looking for a quality new home close to an Area of Outstanding Natural Beauty and within easy reach of Brighton, or London, your search ends here!



# The perfect position

## Education for everyone

You'll find pre-schools and primary schools near Walstead Park, including Northlands Wood Primary Academy and Lindfield Primary School, both catering for 5 – 11-year-olds. For senior pupils there's Oathall Community College, and Warden Park Secondary Academy, both for students aged 11 – 16 years.

For post-16 education Haywards Heath College offers 'A'-levels, vocational courses and apprenticeships.

Less than 1 mile from Walstead Park is Great Walstead School, a private day school for children from the age of 2-and-a-half up to 13.

### Lindfield Primary School

0.8 mile | 16 mins walk

16  
mins



### Oathall Community College

1.7 miles | 4 mins drive

4  
mins



### Lindfield Common

0.5 miles | 9 mins walk

9  
mins



## Walstead Park

### Orchards Shopping Centre

1.9 miles | 5 mins drive

5  
mins



### Muster Green Conservation Area

2.6 miles | 7 mins drive

7  
mins





**Eastern Road Nature Reserve**  
0.6 miles | 12 mins walk



**The Dolphin Leisure Centre**  
2.5 miles | 7 mins drive



**Haywards Heath  
Railway Station**  
2.0 miles | 6 mins drive





# Personalise your new home with upgrades and extras from our **Select** range, where the choice is yours

Customise your kitchen with stylish worktops and the latest modern appliances and personalise your bathrooms with stunning ceramics.

Using the **Select** range there are various options allowing you to create your perfect property which is truly unique to you.

You can personalise every space in your home from kitchen cupboards and electrics to built in wardrobes and if you have a preference for flooring, you can select from our diverse range that includes luxurious carpets, stylish Karndean, ceramics and vinyl.

Pick up a **Select** brochure from a sales consultant today to find an extensive list of items available, including:

- Quartz or Granite worktops
- A selection of kitchen packages including integrated appliances
- Flooring
- Built-in wardrobes
- Upgraded tiling and many more!

The choice is yours - with **Select**.



# Purchase assistance schemes

Wherever you are in the home-buying market - a first-time buyer, looking to step up the property ladder or a downsizer - we have a variety of great purchase assistance schemes!

## Smooth Move

Smooth Move is our scheme for all existing property owners to save time and money. We deal with the estate agents to sell your home and even pay the estate agents' fees!

## Home Exchange

With Home Exchange you can have peace of mind knowing that we are your guaranteed buyer, meaning you'll have a chain-free move without the estate agents' fees.

## Key Worker

Helping essential key workers get on the housing ladder with assistance from Bovis Homes and access to purchase assistance schemes requiring as little as a 5% deposit.

## Armed Forces **TRINITY**

Helping members of the Armed Forces to own a home with assistance from Bovis Homes, the government and the Ministry of Defence.

## Deposit Unlock



With Deposit Unlock, whether you are a first time or next time buyer, you could purchase a new Bovis Home with just a 5% deposit up to the value of £750,000!



Scan me  
for directions



# Walstead Park

Lindfield, West Sussex

RH16 2QG

01444 721126

## From Haywards Heath High Street (South Road / B2272)

- Head south-east on South Rd/B2272
- At the roundabout, take the 3rd exit onto Franklyn Road / B2272
- At The Birch Hotel Roundabout, take the 1st exit onto Lewes Road / A272
- Turn left onto Bedales Hill / B2111
- Continue to follow B2111 onto Scamps Hill
- Walstead Park development can be found on the left hand side

Cover photograph of Lindfield. Not view from the development. The streetscene has been produced for illustrative purposes only, please check the details of the homes you are interested in with the sales consultant.

### Vistry South East region

Linden House, Guards Avenue, Caterham, Surrey CR3 5XL. Telephone: 01883 334 400

Produced by the Vistry Group Design Studio.

When you have finished with this leaflet please recycle it.

Lindfield DS06770 / 05.24





# Walstead Park

Lindfield

Development plan

[bovishomes.co.uk](http://bovishomes.co.uk)



# Walstead Park

## Lindfield

- 3 bedroom homes**

  - The Watermill
  - The Heath
  - The Wealden
  - The Sussex
  - The Hayward
  - The Snowflake
  - The Spry
- 4 bedroom homes**

  - The Bedale
  - The Snowdrop
  - The Spencer
  - The Weald
  - The Harley
  - The Kempe
  - The Eamer
  - The Buxshall
  - The Pontin
  - The Primrose
- 5 bedroom homes**

  - The Sydney
  - The Clover
- Pre-sold homes**

  - 1 & 2 bedroom home
  - 2 bedroom home
  - 3 bedroom home
  - ss substation







# The Hayward

3 bedroom home

[bovishomes.co.uk](https://bovishomes.co.uk)

**Bovis  
Homes** 

# The Hayward

## 3 bedroom home

Ground floor	metres	feet / inches
Kitchen	5.10 x 2.50	16' 8" x 8' 2"
Sitting / dining area	7.06 x 5.19	23' 2" x 17' 1"

### First floor

Bedroom 1	5.20 x 3.95	17' 1" x 13' 0"
Bedroom 2	4.70 x 2.76	15' 5" x 9' 1"
Bedroom 3	3.36 x 2.30	11' 0" x 7' 7"

### The Hayward | H2VT Lindfield |

This floorplan has been produced for illustrative purposes only. Room sizes shown are between arrow points as indicated on plan. The dimensions have tolerances of + or -50mm and should not be used other than for general guidance. If specific dimensions are required, enquiries should be made to the sales consultant.

ovn	oven	ffzs	fridge freezer space
h	hob	w	wardrobe
ds	dishwasher space	cup'd	cupboard
ws	washing machine space	◀ ▶	measuring points

Please refer to the sales consultant for specific plot details as the illustrations shown are computer generated impressions of how the property may look so are indicative only. External details or finishes may vary on individual plots and homes may be built in either detached or attached styles depending on the development layout. Exact specifications, window styles and whether a property is left or right handed may differ from plot to plot.

The floorplans shown are not to scale. Measurements are based on the original drawings. Slight variations may occur during construction.

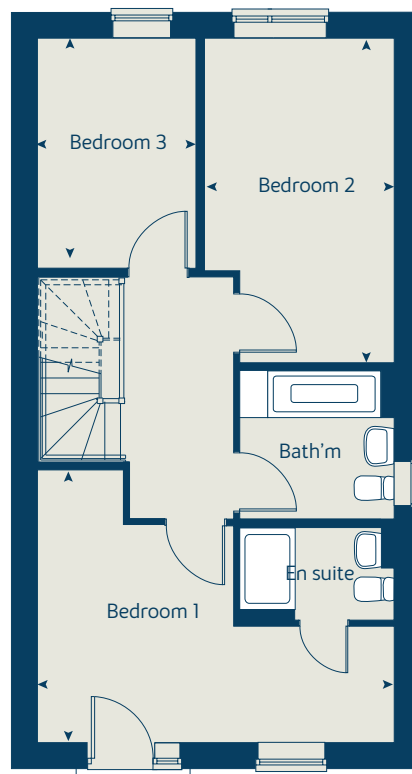
Produced by the Vistry Group Design Studio.

When you have finished with this leaflet please recycle it.

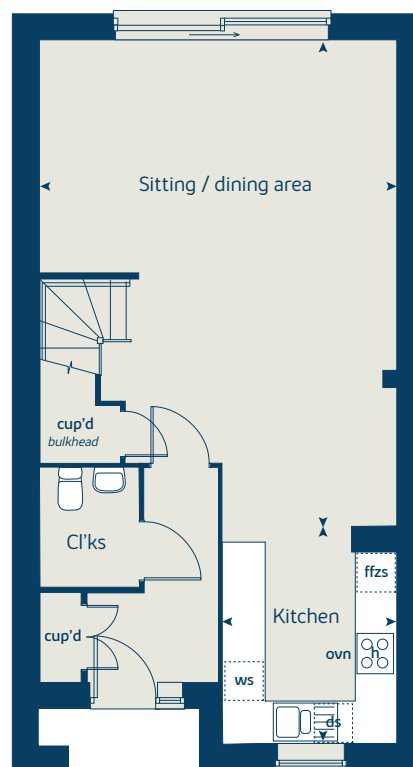
Lindfield DS15001 / 12.25



### First floor



### Ground floor







# The Watermill

3 bedroom home

[bovishomes.co.uk](http://bovishomes.co.uk)

**Bovis  
Homes** 



# The Watermill

## 3 bedroom home

Ground floor	metres	feet / inches
Kitchen	5.10 x 2.50	16' 8" x 8' 2"
Sitting / dining area	5.20 x 5.00	17' 1" x 16' 6"

### First floor

Bedroom 1	5.20 x 3.13	17' 1" x 10' 3"
Bedroom 2	4.70 x 2.76	15' 5" x 9' 1"
Bedroom 3	3.36 x 2.30	11' 0" x 7' 7"

### The Watermill | H2 Lindfield |

This floorplan has been produced for illustrative purposes only. Room sizes shown are between arrow points as indicated on plan. The dimensions have tolerances of + or -50mm and should not be used other than for general guidance. If specific dimensions are required, enquiries should be made to the sales consultant.

\* Window applies to selected plots only. Please see sales consultant for further details.

ovn	oven	ffzs	fridge freezer space
h	hob	w	wardrobe
ds	dishwasher space	cup'd	cupboard
ws	washing machine space	◀ ▶	measuring points

Please refer to the sales consultant for specific plot details as the illustrations shown are computer generated impressions of how the property may look so are indicative only. External details or finishes may vary on individual plots and homes may be built in either detached or attached styles depending on the development layout. Exact specifications, window styles and whether a property is left or right handed may differ from plot to plot.

The floorplans shown are not to scale. Measurements are based on the original drawings. Slight variations may occur during construction.

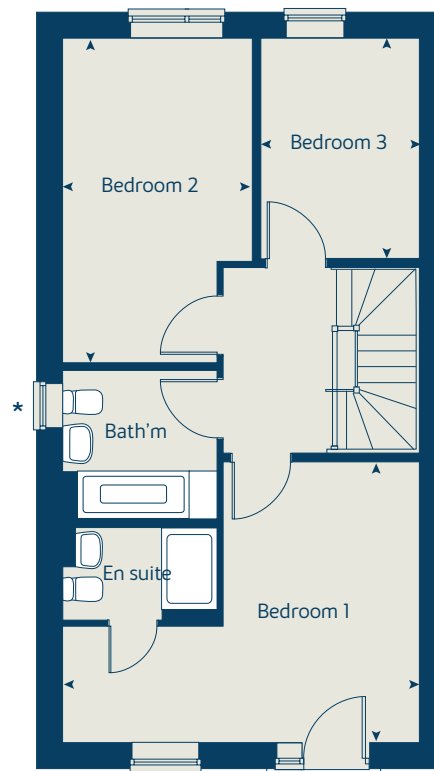
Produced by the Vistry Group Design Studio.

When you have finished with this leaflet please recycle it.

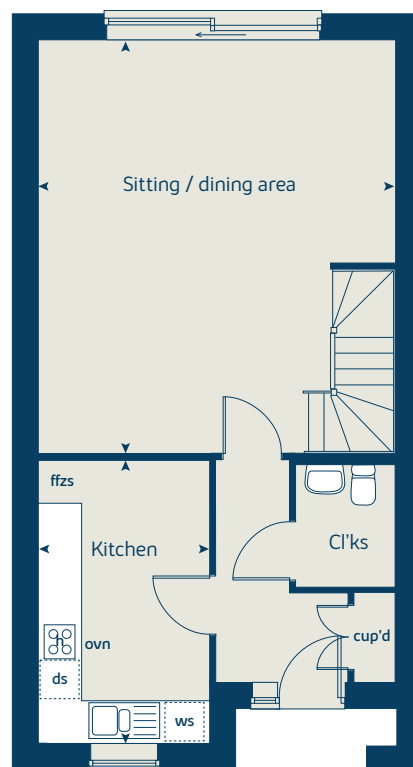
Lindfield DS15001 / 12.25



### First floor



### Ground floor





# The Spry

3 bedroom home

[bovishomes.co.uk](https://bovishomes.co.uk)

**Bovis  
Homes** 

# The Spry

## 3 bedroom home

Ground floor	metres	feet / inches
Kitchen	5.10 x 2.50	16' 8" x 8' 2"
Sitting / dining area	7.06 x 5.19	23' 2" x 17' 1"

First floor	metres	feet / inches
Bedroom 1	5.20 x 3.13	17' 1" x 10' 3"
Bedroom 2	4.70 x 2.76	15' 5" x 9' 1"
Bedroom 3	3.36 x 2.30	11' 0" x 7' 7"

**The Spry | H2VT2 Lindfield |**  
 This floorplan has been produced for illustrative purposes only. Room sizes shown are between arrow points as indicated on plan. The dimensions have tolerances of + or -50mm and should not be used other than for general guidance. If specific dimensions are required, enquiries should be made to the sales consultant.

ovn	oven	ffzs	fridge freezer space
h	hob	w	wardrobe
ds	dishwasher space	cup'd	cupboard
ws	washing machine space	◀ ▶	measuring points

Please refer to the sales consultant for specific plot details as the illustrations shown are computer generated impressions of how the property may look so are indicative only. External details or finishes may vary on individual plots and homes may be built in either detached or attached styles depending on the development layout. Exact specifications, window styles and whether a property is left or right handed may differ from plot to plot.

The floorplans shown are not to scale. Measurements are based on the original drawings. Slight variations may occur during construction.

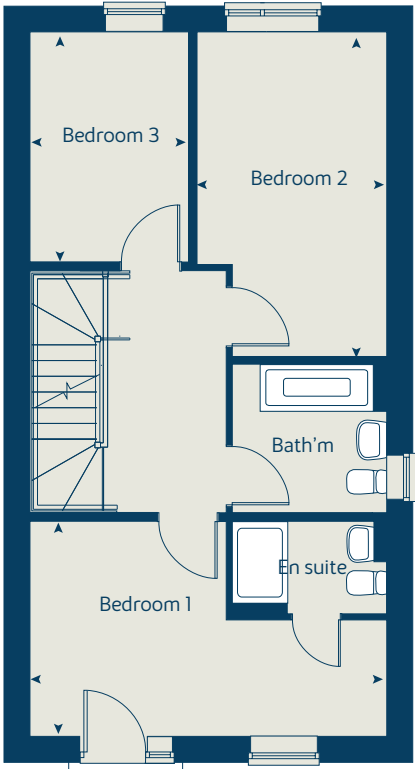
Produced by the Vistry Group Design Studio.

When you have finished with this leaflet please recycle it.

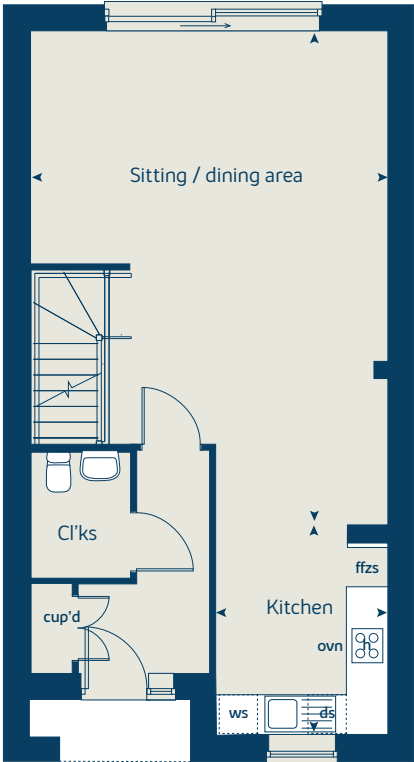
Lindfield DS11898 / 09.24



First floor



Ground floor







# The Snowflake

3 bedroom home

[bovishomes.co.uk](http://bovishomes.co.uk)

**Bovis  
Homes** 

# The Snowflake

## 3 bedroom home

Ground floor	metres	feet / inches
Kitchen	3.34 x 2.49	11' 0" x 8' 2"
Sitting / dining area	5.19 x 4.54	17' 1" x 14' 11"
Study	2.49 x 1.80	8' 2" x 6' 2"

First floor	metres	feet / inches
Bedroom 1	3.85 x 3.40	12' 8" x 11' 2"
Bedroom 2	3.72 x 3.28	12' 3" x 10' 9"
Bedroom 3	5.19 x 2.89	17' 1" x 9' 6"

**The Snowflake | H3 variant Lindfield |**  
 This floorplan has been produced for illustrative purposes only. Room sizes shown are between arrow points as indicated on plan. The dimensions have tolerances of + or -50mm and should not be used other than for general guidance. If specific dimensions are required, enquiries should be made to the sales consultant.

ovn	oven	ffzr	fridge freezer
h	hob	w	wardrobe
ds	dishwasher space	cup'd	cupboard
ws	washing machine space	◀ ▶	measuring points

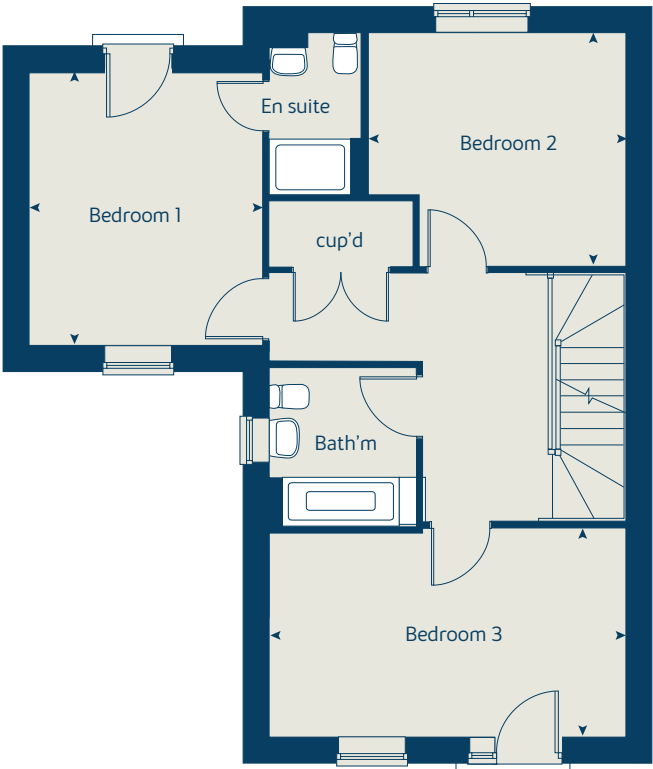
Please refer to the sales consultant for specific plot details as the illustrations shown are computer generated impressions of how the property may look so are indicative only. External details or finishes may vary on individual plots and homes may be built in either detached or attached styles depending on the development layout. Exact specifications, window styles and whether a property is left or right handed may differ from plot to plot.

The floorplans shown are not to scale. Measurements are based on the original drawings. Slight variations may occur during construction.

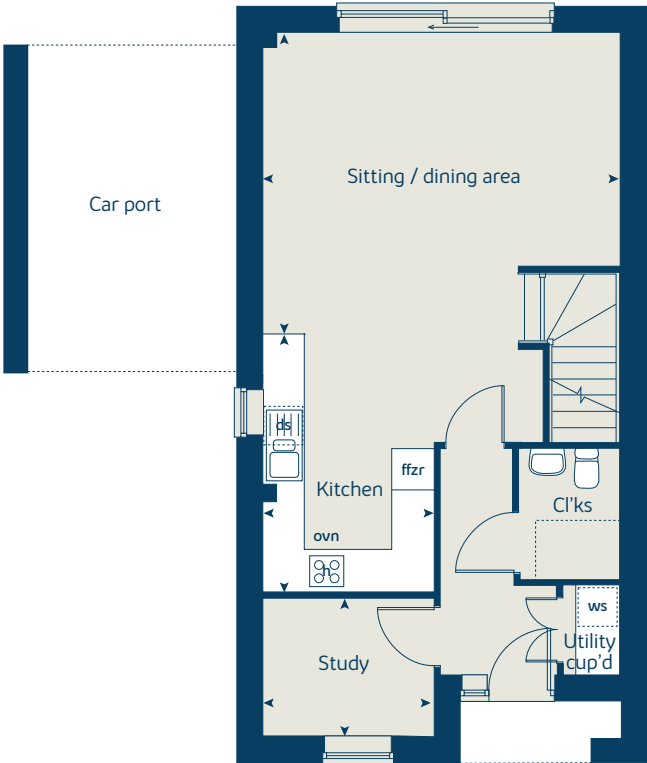
Produced by the Vistry Group Design Studio.  
 When you have finished with this leaflet please recycle it.  
 Lindfield DS15001 / 12.25



First floor



Ground floor







# The Heath

3 bedroom home

[bovishomes.co.uk](http://bovishomes.co.uk)

**Bovis  
Homes** 



# The Heath

## 3 bedroom home

Ground floor	metres	feet / inches
Kitchen	5.15 x 2.49	16' 11" x 8' 2"
Sitting / dining area	5.19 x 4.61	17' 1" x 15' 2"

First floor	metres	feet / inches
Bedroom 1	3.85 x 3.40	12' 8" x 11' 2"
Bedroom 2	3.72 x 3.28	12' 3" x 10' 9"
Bedroom 3	5.19 x 2.89	17' 1" x 9' 6"

**The Heath | H3 Lindfield |**  
 This floorplan has been produced for illustrative purposes only. Room sizes shown are between arrow points as indicated on plan. The dimensions have tolerances of + or -50mm and should not be used other than for general guidance. If specific dimensions are required, enquiries should be made to the sales consultant.

ovn	oven	ffzs	fridge freezer space
h	hob	w	wardrobe
ds	dishwasher space	cup'd	cupboard
ws	washing machine space	◀ ▶	measuring points

Please refer to the sales consultant for specific plot details as the illustrations shown are computer generated impressions of how the property may look so are indicative only. External details or finishes may vary on individual plots and homes may be built in either detached or attached styles depending on the development layout. Exact specifications, window styles and whether a property is left or right handed may differ from plot to plot.

The floorplans shown are not to scale. Measurements are based on the original drawings. Slight variations may occur during construction.

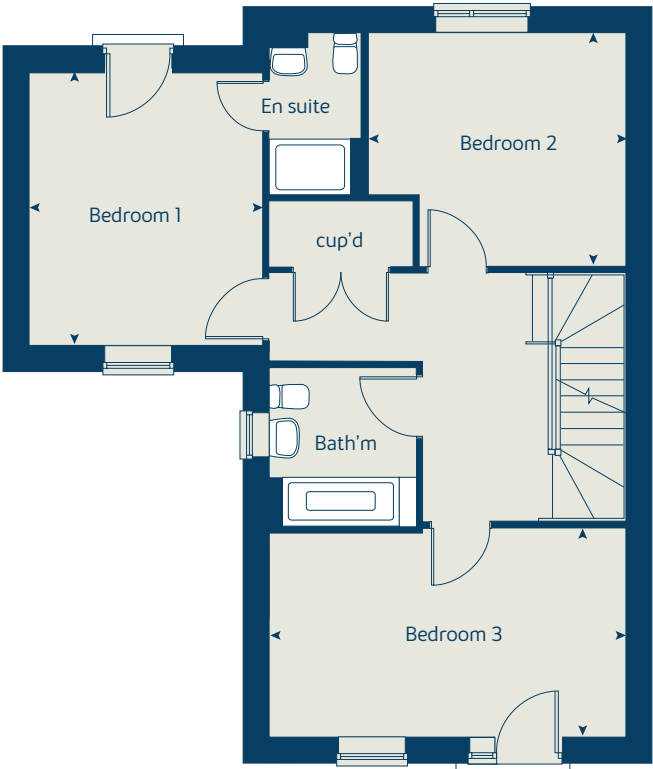
Produced by the Vistry Group Design Studio.

When you have finished with this leaflet please recycle it.

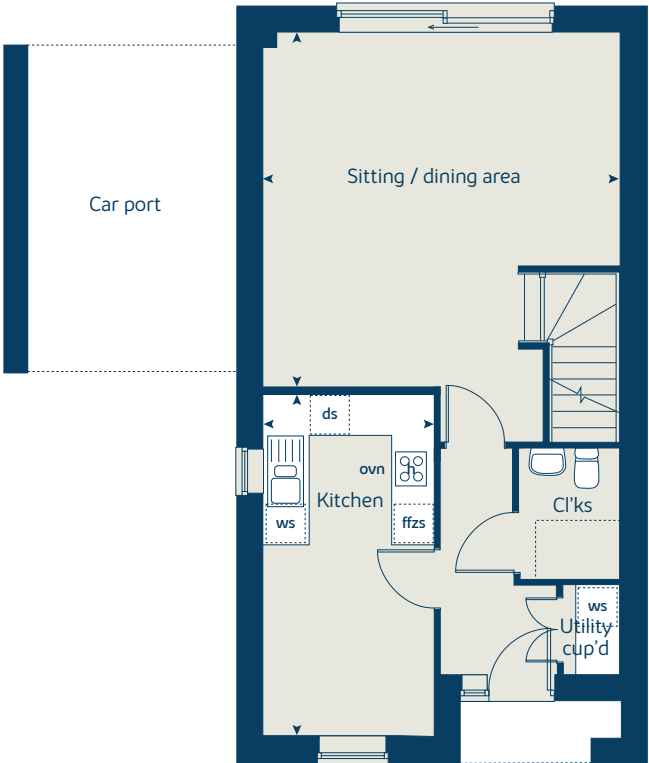
Lindfield DS15001 / 12.25



First floor



Ground floor





# The Wealden

3 bedroom home

[bovishomes.co.uk](https://bovishomes.co.uk)

**Bovis  
Homes** 

# The Wealden

## 3 bedroom home

Ground floor	metres	feet / inches
Kitchen / dining area	5.64 x 4.80	18' 6" x 15' 9"
Sitting / study area	5.64 x 3.59	18' 6" x 11' 10"

### First floor

Bedroom 1	4.21 x 3.32	13' 10" x 10' 11"
Bedroom 2	3.60 x 2.75	11' 10" x 9' 0"
Bedroom 3	4.82 x 2.77	15' 10" x 9' 11"

### The Wealden | H4 Lindfield |

This floorplan has been produced for illustrative purposes only. Room sizes shown are between arrow points as indicated on plan. The dimensions have tolerances of + or -50mm and should not be used other than for general guidance. If specific dimensions are required, enquiries should be made to the sales consultant.

ovn	oven	ffzs	fridge freezer space
h	hob	w	wardrobe
ds	dishwasher space	cup'd	cupboard
ws	washing machine space	◀ ▶	measuring points

Please refer to the sales consultant for specific plot details as the illustrations shown are computer generated impressions of how the property may look so are indicative only. External details or finishes may vary on individual plots and homes may be built in either detached or attached styles depending on the development layout. Exact specifications, window styles and whether a property is left or right handed may differ from plot to plot.

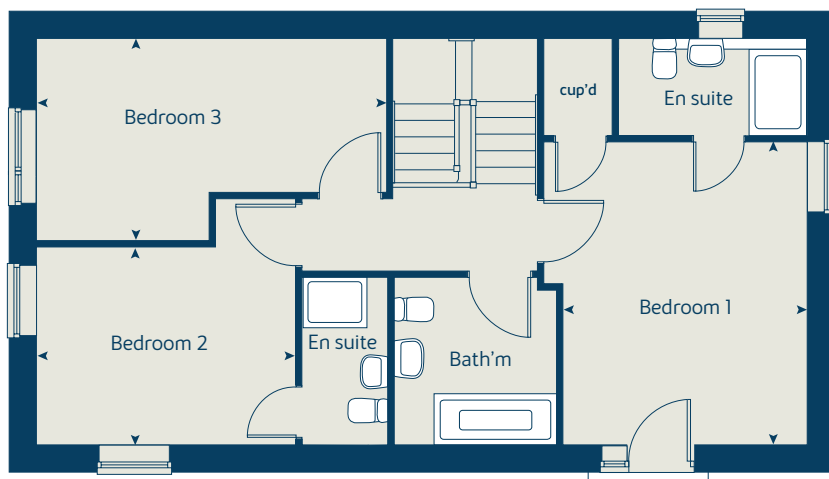
The floorplans shown are not to scale. Measurements are based on the original drawings. Slight variations may occur during construction.

Produced by the Vistry Group Design Studio.

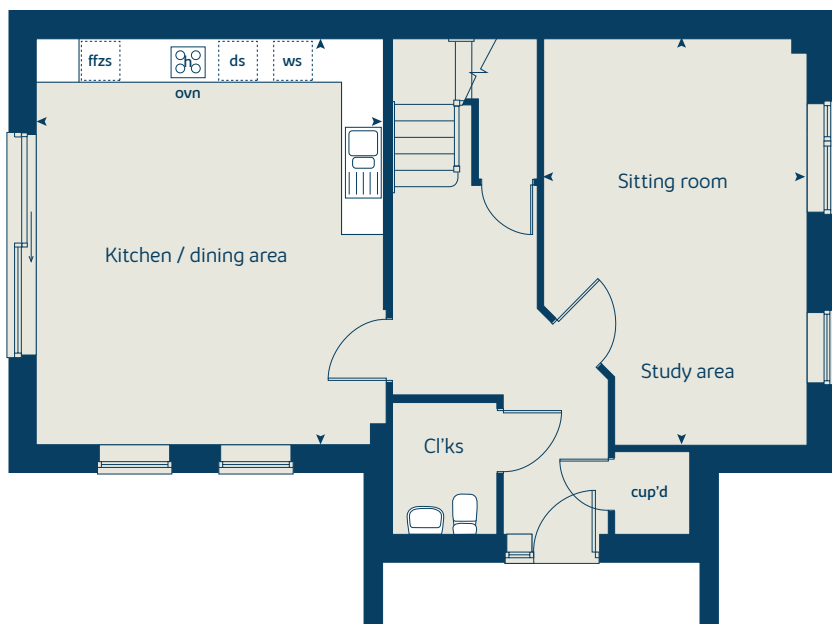
When you have finished with this leaflet please recycle it.

Lindfield DS15001 / 12.25

### First floor



### Ground floor







# The Sussex

3 bedroom home

[bovishomes.co.uk](http://bovishomes.co.uk)

**Bovis  
Homes** 

# The Sussex

## 3 bedroom home

Ground floor	metres	feet / inches
Kitchen / dining area	5.64 x 4.80	18' 6" x 15' 9"
Sitting / study area	5.64 x 3.59	18' 6" x 11' 10"

### First floor

Bedroom 1	4.21 x 3.32	13' 10" x 10' 11"
Bedroom 2	3.60 x 2.75	11' 10" x 9' 0"
Bedroom 3	4.82 x 2.77	15' 10" x 9' 11"

### The Sussex | H4 Lindfield |

This floorplan has been produced for illustrative purposes only. Room sizes shown are between arrow points as indicated on plan. The dimensions have tolerances of + or -50mm and should not be used other than for general guidance. If specific dimensions are required, enquiries should be made to the sales consultant.

ovn	oven	ffzs	fridge freezer space
h	hob	w	wardrobe
ds	dishwasher space	cup'd	cupboard
ws	washing machine space	◀ ▶	measuring points

Please refer to the sales consultant for specific plot details as the illustrations shown are computer generated impressions of how the property may look so are indicative only. External details or finishes may vary on individual plots and homes may be built in either detached or attached styles depending on the development layout. Exact specifications, window styles and whether a property is left or right handed may differ from plot to plot.

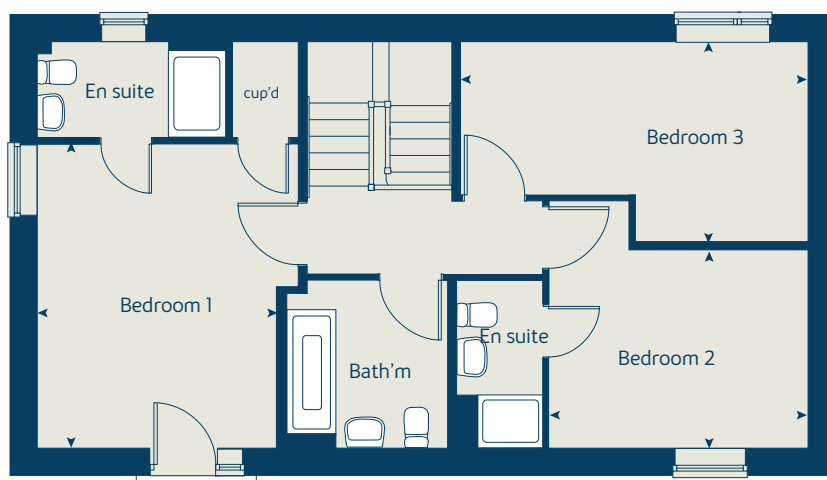
The floorplans shown are not to scale. Measurements are based on the original drawings. Slight variations may occur during construction.

Produced by the Vistry Group Design Studio.

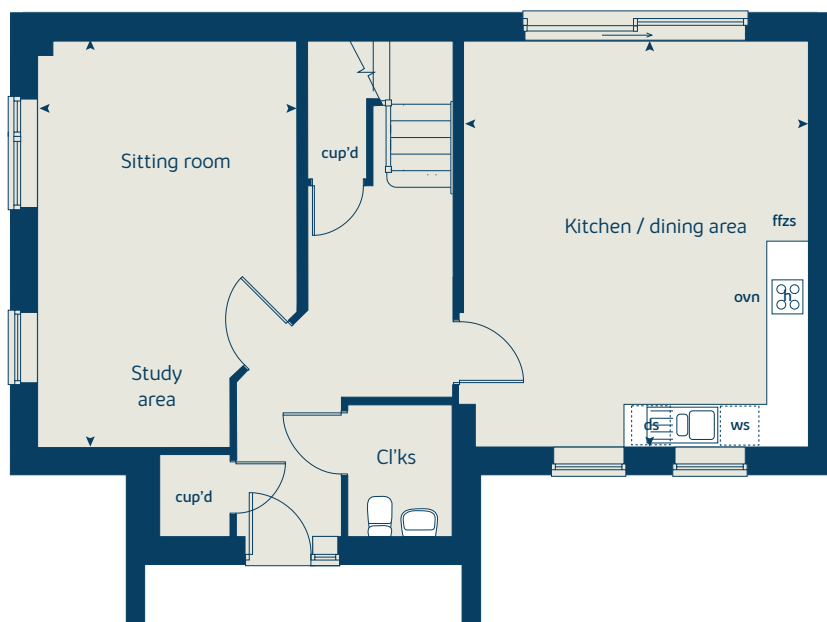
When you have finished with this leaflet please recycle it.

Lindfield DS11898 / 09.24

### First floor



### Ground floor







# The Bedale

4 bedroom home

[bovishomes.co.uk](http://bovishomes.co.uk)

**Bovis  
Homes** 



# The Bedale

## 4 bedroom home

Ground floor	metres	feet / inches
Kitchen / dining area	6.65 x 6.47	21' 10" x 21' 2"
Sitting room	4.65 x 3.45	15' 3" x 11' 4"

### First floor

Bedroom 1	3.95 x 3.60	12' 11" x 11' 10"
Bedroom 2	4.06 x 2.92	13' 4" x 9' 7"
Bedroom 3	3.66 x 3.60	12' 0" x 11' 10"
Bedroom 4	3.63 x 2.92	11' 11" x 9' 7"

### The Bedale | H5 Lindfield |

This floorplan has been produced for illustrative purposes only. Room sizes shown are between arrow points as indicated on plan. The dimensions have tolerances of + or -50mm and should not be used other than for general guidance. If specific dimensions are required, enquiries should be made to the sales consultant.

ovn	oven	ffzr	fridge freezer
h	hob	w	wardrobe
dw	dishwasher	cup'd	cupboard
ws	washing machine space	◀ ▶	measuring points

Please refer to the sales consultant for specific plot details as the illustrations shown are computer generated impressions of how the property may look so are indicative only. External details or finishes may vary on individual plots and homes may be built in either detached or attached styles depending on the development layout. Exact specifications, window styles and whether a property is left or right handed may differ from plot to plot.

The floorplans shown are not to scale. Measurements are based on the original drawings. Slight variations may occur during construction.

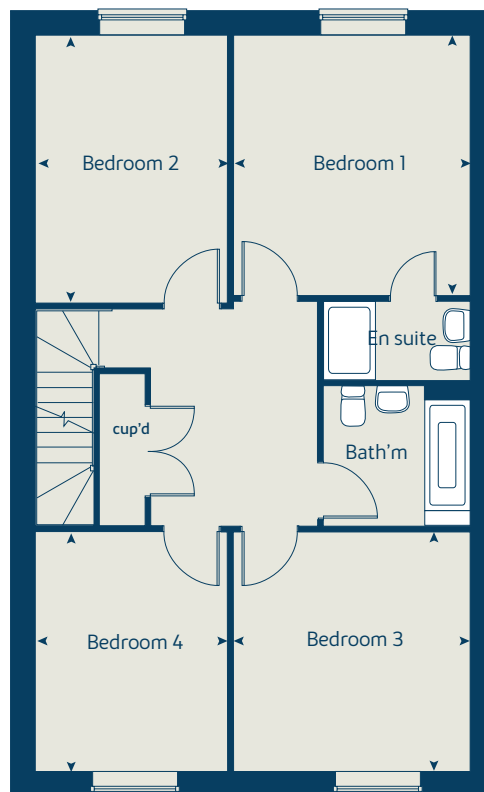
Produced by the Vistry Group Design Studio.

When you have finished with this leaflet please recycle it.

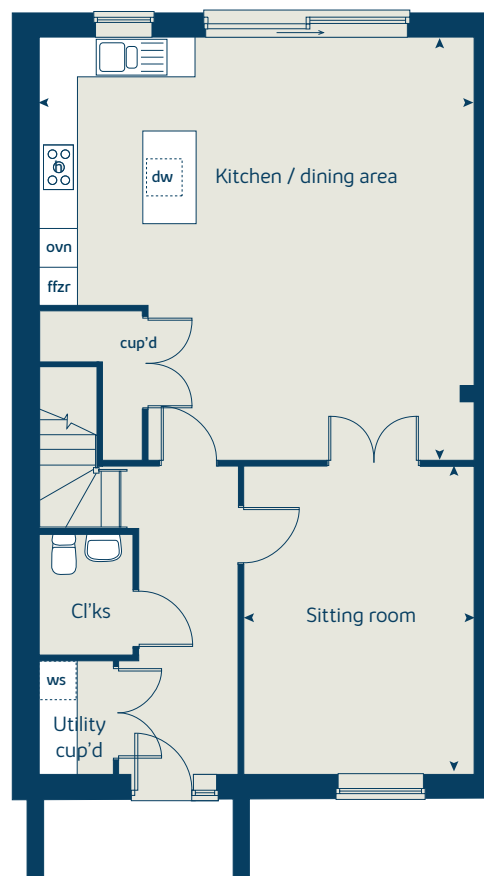
Lindfield DS15001 / 12.25



### First floor



### Ground floor





# The Harley

4 bedroom home

[bovishomes.co.uk](https://bovishomes.co.uk)

**Bovis  
Homes** 

# The Harley

## 4 bedroom home

Ground floor	metres	feet / inches
Kitchen	4.71 x 3.45	15' 6" x 11' 4"
Sitting / dining area	6.65 x 6.41	21' 10" x 21' 0"

First floor		
Bedroom 1	3.95 x 3.60	12' 11" x 11' 10"
Bedroom 2	4.06 x 2.92	13' 4" x 9' 7"
Bedroom 3	3.66 x 3.60	12' 0" x 11' 10"
Bedroom 4	3.63 x 2.92	11' 11" x 9' 7"

**The Harley | H5 variant Lindfield |**  
 This floorplan has been produced for illustrative purposes only. Room sizes shown are between arrow points as indicated on plan. The dimensions have tolerances of + or -50mm and should not be used other than for general guidance. If specific dimensions are required, enquiries should be made to the sales consultant.

ovn	oven	ffzr	fridge freezer
h	hob	w	wardrobe
ds	dishwasher space	cup'd	cupboard
ws	washing machine space	◀ ▶	measuring points

Please refer to the sales consultant for specific plot details as the illustrations shown are computer generated impressions of how the property may look so are indicative only. External details or finishes may vary on individual plots and homes may be built in either detached or attached styles depending on the development layout. Exact specifications, window styles and whether a property is left or right handed may differ from plot to plot.

The floorplans shown are not to scale. Measurements are based on the original drawings. Slight variations may occur during construction.

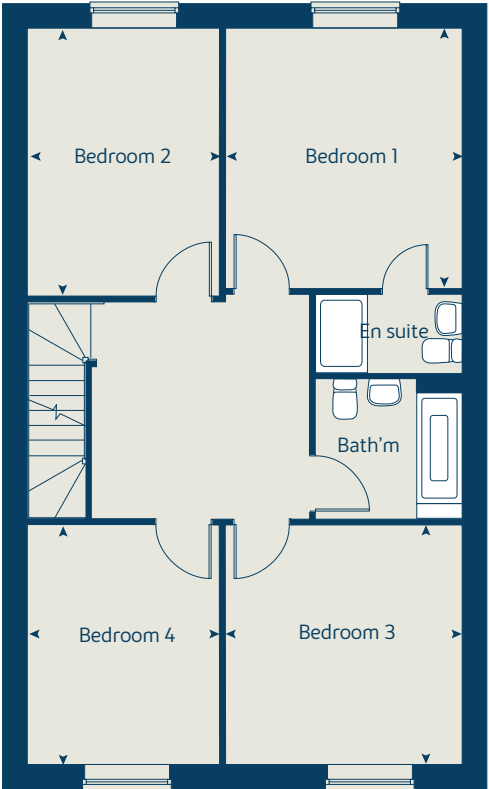
Produced by the Vistry Group Design Studio.

When you have finished with this leaflet please recycle it.

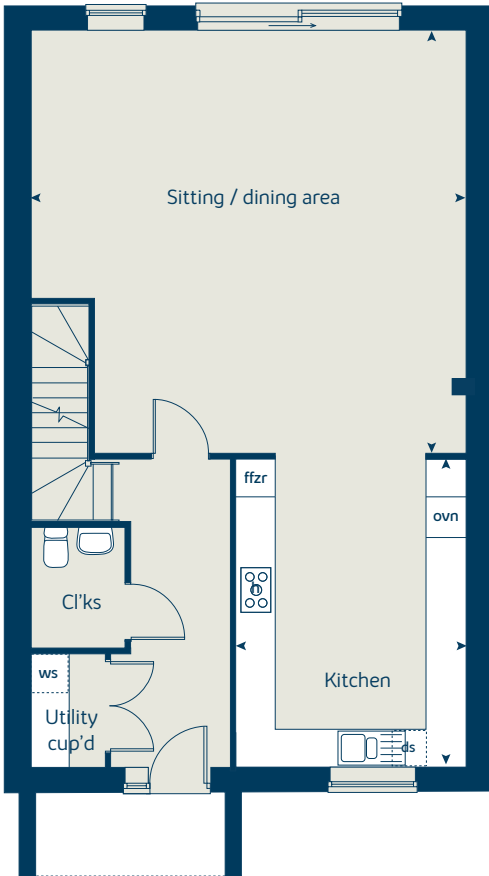
Lindfield DS15001 / 12.25



### First floor



### Ground floor







# The Eamer

4 bedroom home

[bovishomes.co.uk](https://bovishomes.co.uk)

**Bovis  
Homes** 

# The Eamer

## 4 bedroom home

Ground floor	metres	feet / inches
Kitchen / dining room	6.99 x 4.05	22' 11" x 13' 4"
Sitting room	4.11 x 3.93	16' 4" x 12' 11"
Study	3.93 x 1.86	12' 11" x 6' 1"

First floor	metres	feet / inches
Bedroom 1	4.04 x 3.17	13' 3" x 10' 5"
Bedroom 2	3.50 x 3.38	11' 6" x 11' 1"
Bedroom 3	4.05 x 2.83	13' 4" x 9' 4"
Bedroom 4	3.90 x 2.20	12' 11" x 7' 3"

**The Eamer | H6 v3 Lindfield |**  
 This floorplan has been produced for illustrative purposes only. Room sizes shown are between arrow points as indicated on plan. The dimensions have tolerances of + or -50mm and should not be used other than for general guidance. If specific dimensions are required, enquiries should be made to the sales consultant.

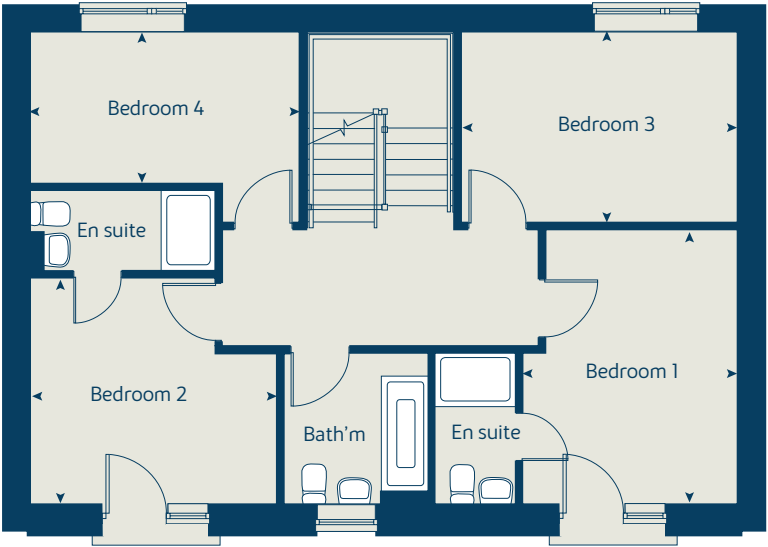
ovn	oven	cyl	hot water cylinder
h	hob	w	wardrobe
ds	dishwasher space	cup'd	cupboard
ws	washing machine space	◀ ▶	measuring points
ffzr	fridge freezer		

Please refer to the sales consultant for specific plot details as the illustrations shown are computer generated impressions of how the property may look so are indicative only. External details or finishes may vary on individual plots and homes may be built in either detached or attached styles depending on the development layout. Exact specifications, window styles and whether a property is left or right handed may differ from plot to plot.

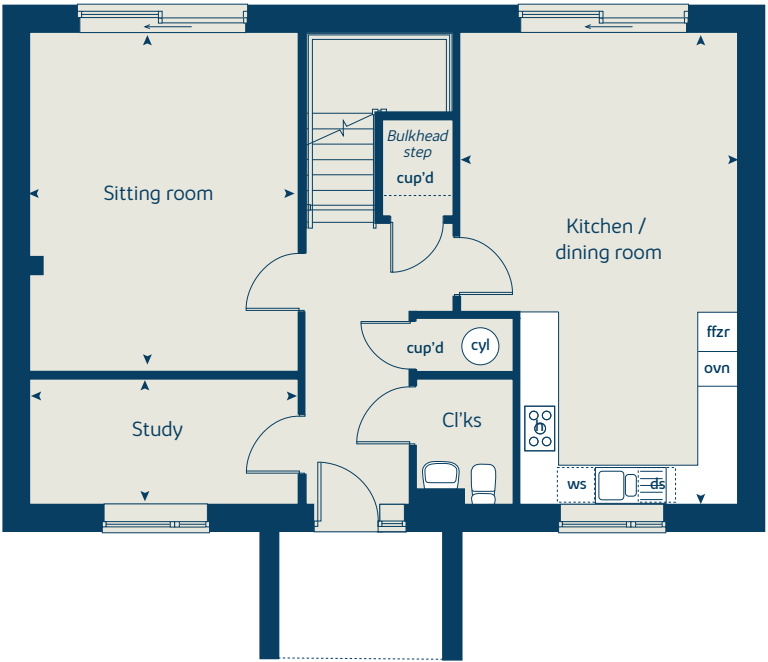
The floorplans shown are not to scale. Measurements are based on the original drawings. Slight variations may occur during construction.

Produced by the Vistry Group Design Studio.  
 When you have finished with this leaflet please recycle it.  
 Lindfield DS15001 / 12.25

### First floor



### Ground floor





# The Snowdrop

4 bedroom home

[bovishomes.co.uk](http://bovishomes.co.uk)

**Bovis  
Homes** 



# The Snowdrop

## 4 bedroom home

Ground floor	metres	feet / inches
Kitchen / dining room	6.99 x 4.05	22' 11" x 13' 4"
Sitting room	4.98 x 3.93	16' 4" x 12' 11"
Study	3.93 x 1.86	12' 11" x 6' 1"

First floor	metres	feet / inches
Bedroom 1	4.04 x 3.17	13' 3" x 10' 5"
Bedroom 2	3.50 x 3.38	11' 6" x 11' 1"
Bedroom 3	4.05 x 2.83	13' 4" x 9' 4"
Bedroom 4	3.90 x 2.20	12' 11" x 7' 3"

**The Snowdrop | H6 Lindfield |**  
 This floorplan has been produced for illustrative purposes only. Room sizes shown are between arrow points as indicated on plan. The dimensions have tolerances of + or -50mm and should not be used other than for general guidance. If specific dimensions are required, enquiries should be made to the sales consultant.

\* Window applies to plot 29 only. Please see sales consultant for further details.

ovn	oven	cyl	hot water cylinder
h	hob	w	wardrobe
ds	dishwasher space	cup'd	cupboard
ws	washing machine space	◀ ▶	measuring points
ffzr	fridge freezer		

Please refer to the sales consultant for specific plot details as the illustrations shown are computer generated impressions of how the property may look so are indicative only. External details or finishes may vary on individual plots and homes may be built in either detached or attached styles depending on the development layout. Exact specifications, window styles and whether a property is left or right handed may differ from plot to plot.

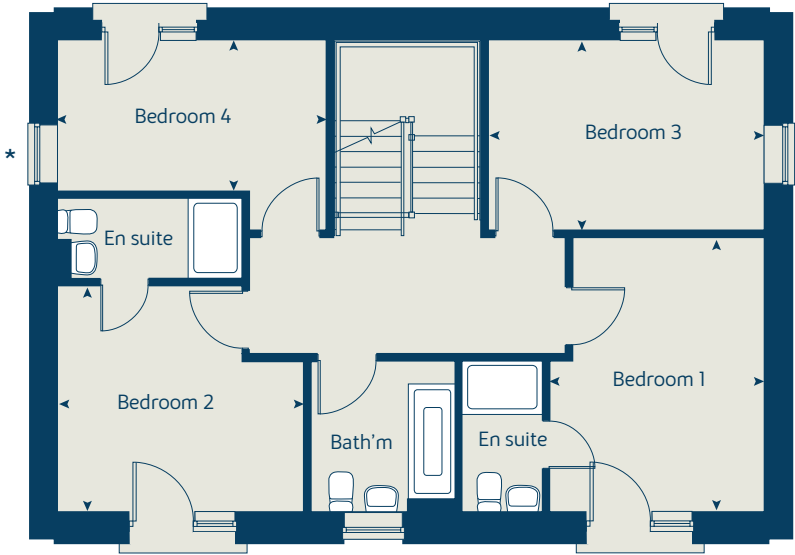
The floorplans shown are not to scale. Measurements are based on the original drawings. Slight variations may occur during construction.

Produced by the Vistry Group Design Studio.

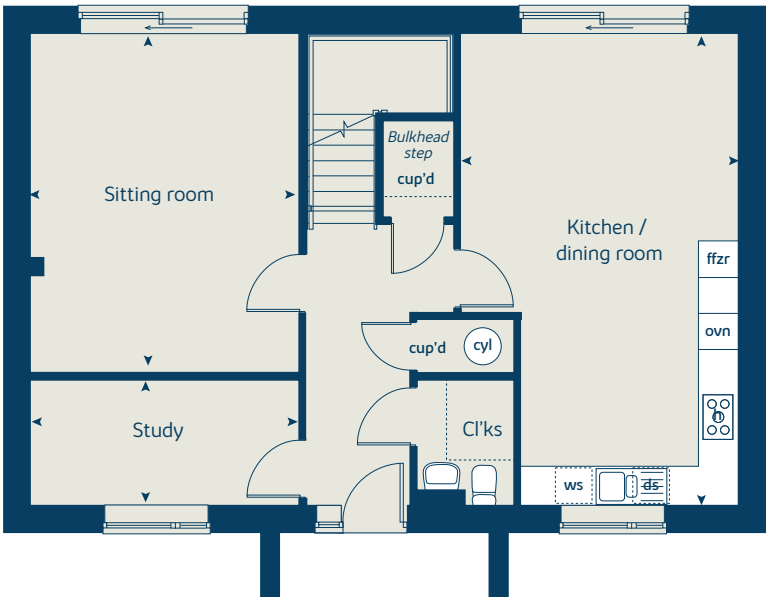
When you have finished with this leaflet please recycle it.

Lindfield DS06770 / 03.24

### First floor



### Ground floor





# The Kempe

4 bedroom home

[bovishomes.co.uk](https://bovishomes.co.uk)

**Bovis  
Homes** 

# The Kempe

## 4 bedroom home

Ground floor	metres	feet / inches
Kitchen	4.24 x 3.90	13' 11" x 12' 11"
Sitting / dining room	6.99 x 4.05	22' 11" x 13' 4"
Study	3.93 x 2.59	12' 11" x 8' 6"

First floor	metres	feet / inches
Bedroom 1	4.04 x 3.17	13' 3" x 10' 5"
Bedroom 2	3.50 x 3.38	11' 6" x 11' 1"
Bedroom 3	4.05 x 2.83	13' 4" x 9' 4"
Bedroom 4	3.90 x 2.20	12' 11" x 7' 3"

**The Kempe | H6 v2 Lindfield |**  
 This floorplan has been produced for illustrative purposes only. Room sizes shown are between arrow points as indicated on plan. The dimensions have tolerances of + or -50mm and should not be used other than for general guidance. If specific dimensions are required, enquiries should be made to the sales consultant.

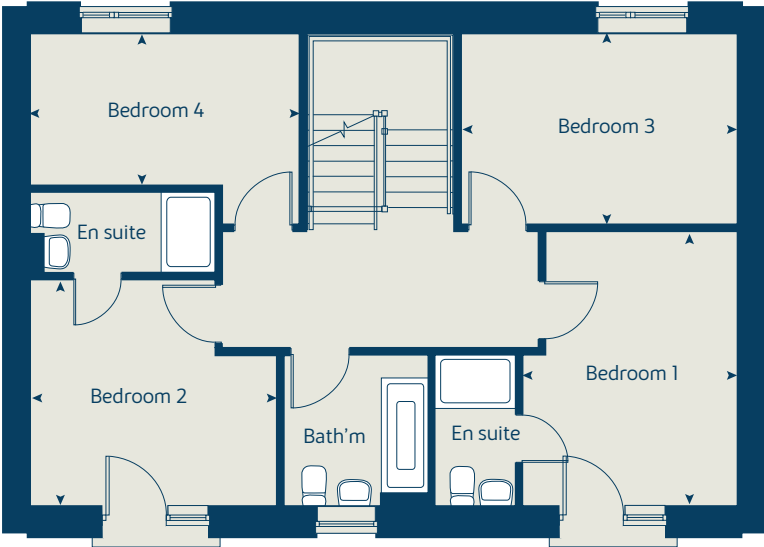
ovn	oven	cyl	hot water cylinder
h	hob	w	wardrobe
ds	dishwasher space	cup'd	cupboard
ws	washing machine space	◀ ▶	measuring points
ffzr	fridge freezer		

Please refer to the sales consultant for specific plot details as the illustrations shown are computer generated impressions of how the property may look so are indicative only. External details or finishes may vary on individual plots and homes may be built in either detached or attached styles depending on the development layout. Exact specifications, window styles and whether a property is left or right handed may differ from plot to plot.

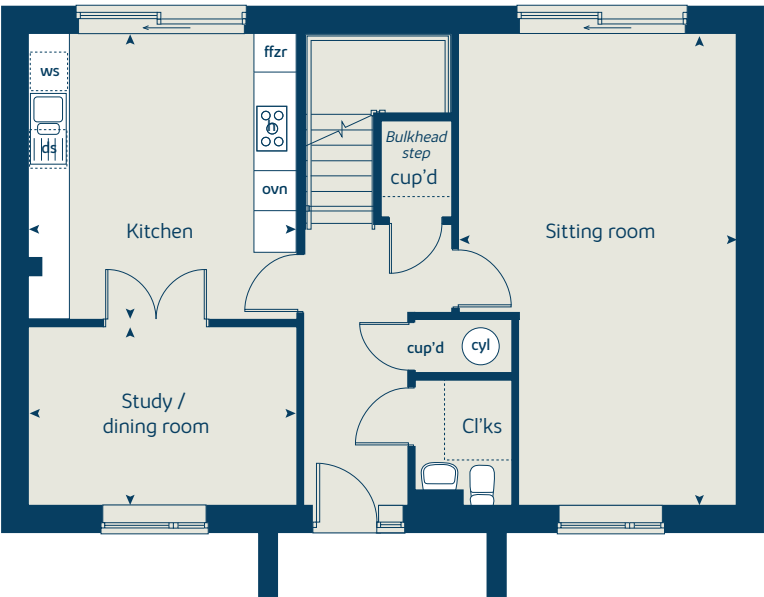
The floorplans shown are not to scale. Measurements are based on the original drawings. Slight variations may occur during construction.

Produced by the Vistry Group Design Studio.  
 When you have finished with this leaflet please recycle it.  
 Lindfield DS15001 / 12.25

### First floor



### Ground floor







# The Pontin

4 bedroom home

[bovishomes.co.uk](https://bovishomes.co.uk)

**Bovis  
Homes** 

# The Pontin

## 4 bedroom home

Ground floor	metres	feet / inches
Kitchen	4.23 x 3.93	13' 11" x 12' 11"
Sitting room / Study	6.99 x 4.05	22' 11" x 13' 4"
Dining room	3.93 x 2.61	12' 11" x 8' 7"

First floor	metres	feet / inches
Bedroom 1	4.04 x 3.17	13' 3" x 10' 5"
Bedroom 2	3.50 x 3.38	11' 6" x 11' 1"
Bedroom 3	4.05 x 2.83	13' 4" x 9' 4"
Bedroom 4	3.90 x 2.20	12' 11" x 7' 3"

**The Pontin | H6 v5 Lindfield |**  
 This floorplan has been produced for illustrative purposes only. Room sizes shown are between arrow points as indicated on plan. The dimensions have tolerances of + or -50mm and should not be used other than for general guidance. If specific dimensions are required, enquiries should be made to the sales consultant.

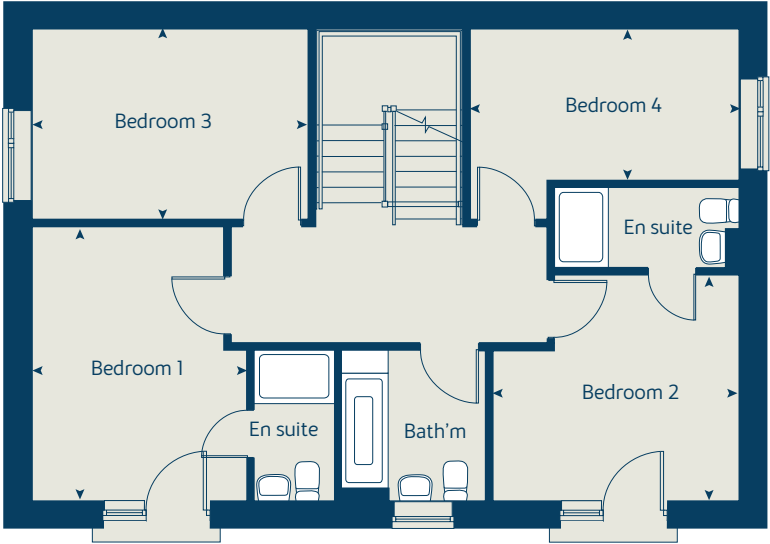
ovn	oven	cyl	hot water cylinder
h	hob	w	wardrobe
ds	dishwasher space	cup'd	cupboard
ws	washing machine space	◀ ▶	measuring points
ffzr	fridge freezer		

Please refer to the sales consultant for specific plot details as the illustrations shown are computer generated impressions of how the property may look so are indicative only. External details or finishes may vary on individual plots and homes may be built in either detached or attached styles depending on the development layout. Exact specifications, window styles and whether a property is left or right handed may differ from plot to plot.

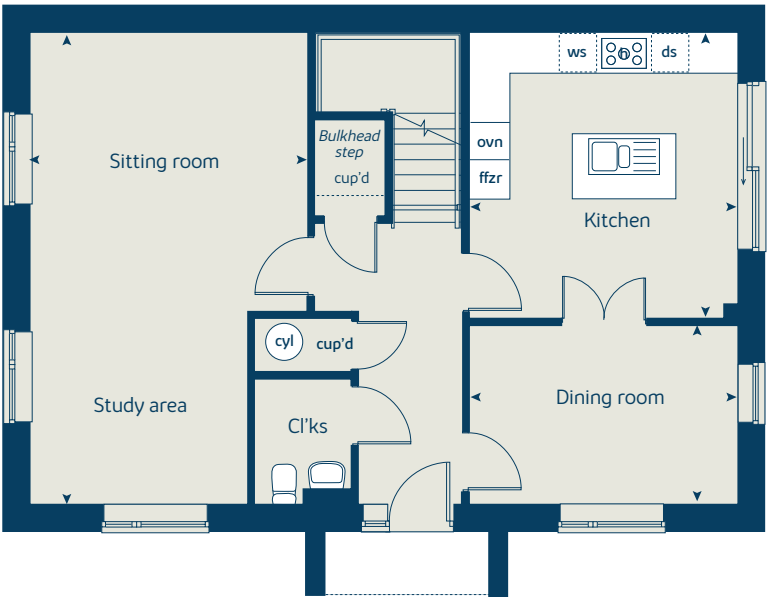
The floorplans shown are not to scale. Measurements are based on the original drawings. Slight variations may occur during construction.

Produced by the Vistry Group Design Studio.  
 When you have finished with this leaflet please recycle it.  
 Lindfield DS15001 / 12.25

### First floor



### Ground floor





# The Buxshall

4 bedroom home

[bovishomes.co.uk](http://bovishomes.co.uk)

**Bovis  
Homes** 



# The Buxshall

4 bedroom home

Ground floor	metres	feet / inches
Kitchen	4.98 x 3.93	16' 4" x 12' 11"
Sitting / dining room	6.99 x 4.05	22' 11" x 13' 4"
Study	3.93 x 1.86	12' 11" x 6' 1"

First floor		
Bedroom 1	4.04 x 3.17	13' 3" x 10' 5"
Bedroom 2	3.50 x 3.38	11' 6" x 11' 1"
Bedroom 3	4.05 x 2.83	13' 4" x 9' 4"
Bedroom 4	3.90 x 2.20	12' 11" x 7' 3"

**The Buxshall | H6 v4 Lindfield |**  
 This floorplan has been produced for illustrative purposes only. Room sizes shown are between arrow points as indicated on plan. The dimensions have tolerances of + or -50mm and should not be used other than for general guidance. If specific dimensions are required, enquiries should be made to the sales consultant.

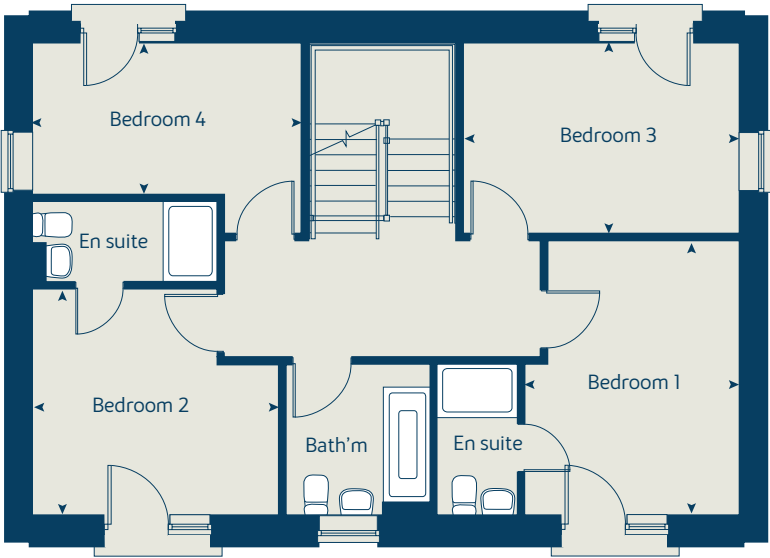
ovn	oven	cyl	hot water cylinder
h	hob	w	wardrobe
ds	dishwasher space	cup'd	cupboard
ws	washing machine space	◀ ▶	measuring points
ffzr	fridge freezer		

Please refer to the sales consultant for specific plot details as the illustrations shown are computer generated impressions of how the property may look so are indicative only. External details or finishes may vary on individual plots and homes may be built in either detached or attached styles depending on the development layout. Exact specifications, window styles and whether a property is left or right handed may differ from plot to plot.

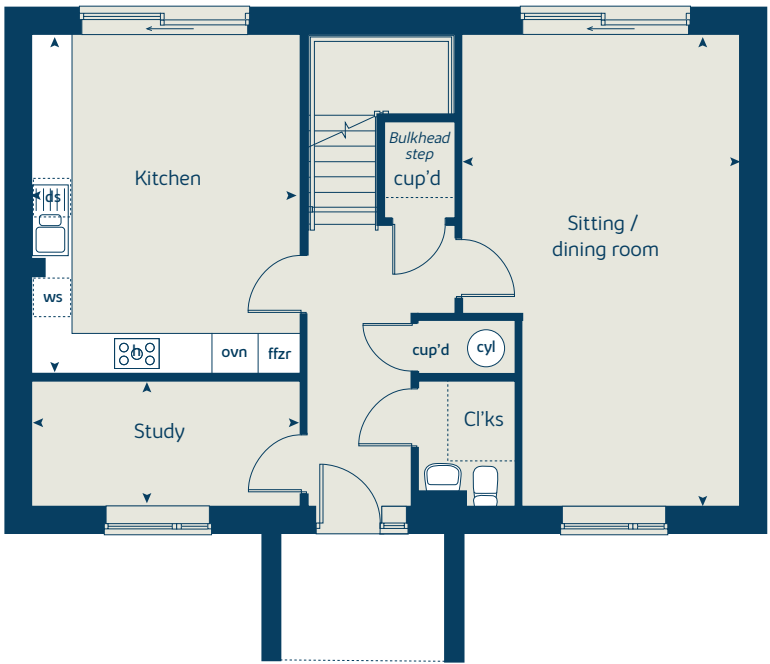
The floorplans shown are not to scale. Measurements are based on the original drawings. Slight variations may occur during construction.

Produced by the Vistry Group Design Studio.  
 When you have finished with this leaflet please recycle it.  
 Lindfield DS06770 / 03.24

## First floor



## Ground floor





# The Spencer

4 bedroom home

[bovishomes.co.uk](https://bovishomes.co.uk)

**Bovis  
Homes** 

# The Spencer

## 4 bedroom home

Ground floor	metres	feet / inches
Kitchen / dining area	6.44 x 5.37	21' 2" x 17' 7"
Study	2.72 x 2.19	8' 11" x 7' 3"

First floor	metres	feet / inches
Bedroom 2	5.20 x 2.75	17' 1" x 9' 0"
Bedroom 3	3.21 x 2.53	10' 7" x 8' 4"
Sitting room	5.37 x 3.65	17' 1" x 12' 0"

Second floor	metres	feet / inches
Bedroom 1	5.37 x 3.69	17' 7" x 12' 1"
Bedroom 4	3.43 x 3.21	11' 3" x 10' 7"

### The Spencer | H7 Lindfield |

This floorplan has been produced for illustrative purposes only. Room sizes shown are between arrow points as indicated on plan. The dimensions have tolerances of + or -50mm and should not be used other than for general guidance. If specific dimensions are required, enquiries should be made to the sales consultant.

ovn	oven	cyl	hot water cylinder
h	hob	w	wardrobe
ds	dishwasher space	cup'd	cupboard
ws	washing machine space	◀ ▶	measuring points
ffzr	fridge freezer		

Please refer to the sales consultant for specific plot details as the illustrations shown are computer generated impressions of how the property may look so are indicative only. External details or finishes may vary on individual plots and homes may be built in either detached or attached styles depending on the development layout. Exact specifications, window styles and whether a property is left or right handed may differ from plot to plot.

The floorplans shown are not to scale. Measurements are based on the original drawings. Slight variations may occur during construction.

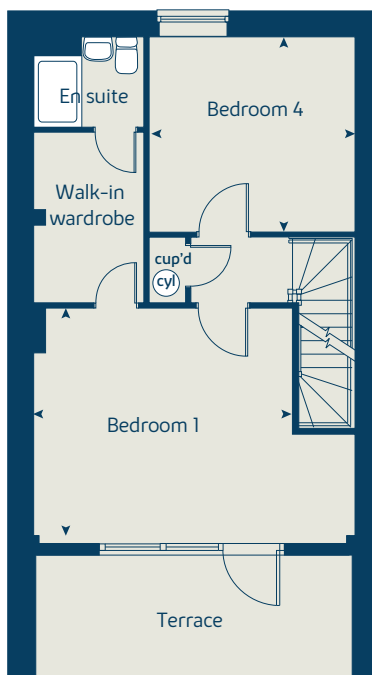
Produced by the Vistry Group Design Studio.

When you have finished with this leaflet please recycle it.

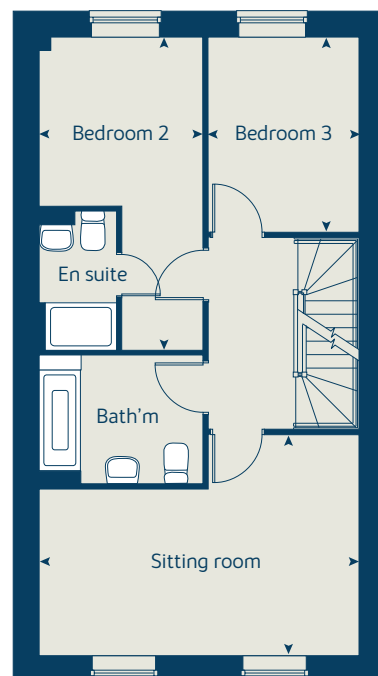
Lindfield DS13613 / 04.25



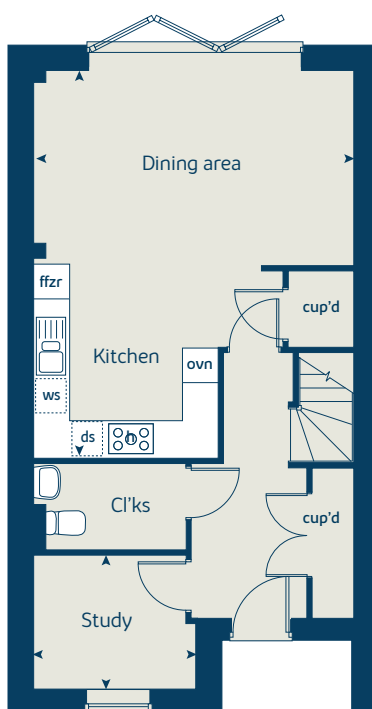
## Second floor



## First floor



## Ground floor







# The Primrose

4 bedroom home

[bovishomes.co.uk](https://bovishomes.co.uk)

**Bovis  
Homes** 

# The Primrose

## 4 bedroom home

Ground floor	metres	feet / inches
Kitchen / dining area	6.44 x 5.37	21' 2" x 17' 7"
Study	2.72 x 2.19	8' 11" x 7' 3"

First floor	metres	feet / inches
Bedroom 2	5.20 x 2.75	17' 1" x 9' 0"
Bedroom 3	3.21 x 2.53	10' 7" x 8' 4"
Sitting room	5.37 x 3.65	17' 1" x 12' 0"

Second floor	metres	feet / inches
Bedroom 1	5.37 x 3.69	17' 7" x 12' 1"
Bedroom 4	3.43 x 3.21	11' 3" x 10' 7"

### The Primrose | H7 Lindfield |

This floorplan has been produced for illustrative purposes only. Room sizes shown are between arrow points as indicated on plan. The dimensions have tolerances of + or -50mm and should not be used other than for general guidance. If specific dimensions are required, enquiries should be made to the sales consultant.

ovn	oven	cyl	hot water cylinder
h	hob	w	wardrobe
ds	dishwasher space	cup'd	cupboard
ws	washing machine space	◀ ▶	measuring points
ffzr	fridge freezer		

Please refer to the sales consultant for specific plot details as the illustrations shown are computer generated impressions of how the property may look so are indicative only. External details or finishes may vary on individual plots and homes may be built in either detached or attached styles depending on the development layout. Exact specifications, window styles and whether a property is left or right handed may differ from plot to plot.

The floorplans shown are not to scale. Measurements are based on the original drawings. Slight variations may occur during construction.

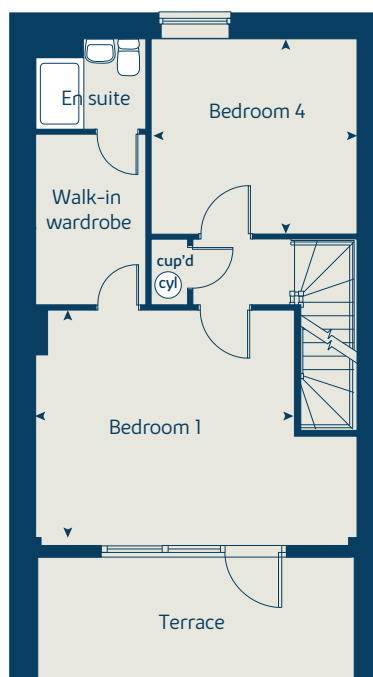
Produced by the Vistry Group Design Studio.

When you have finished with this leaflet please recycle it.

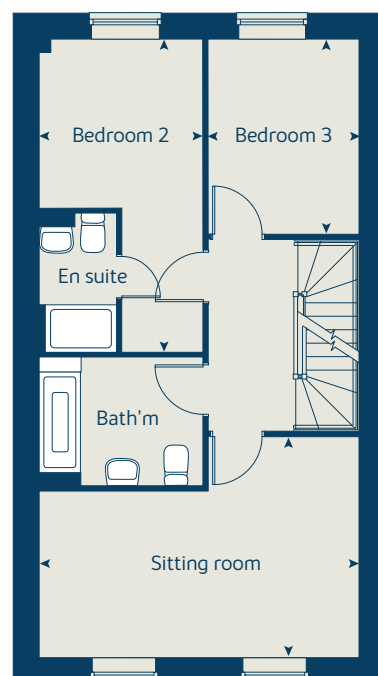
Lindfield DS15001 / 12.25



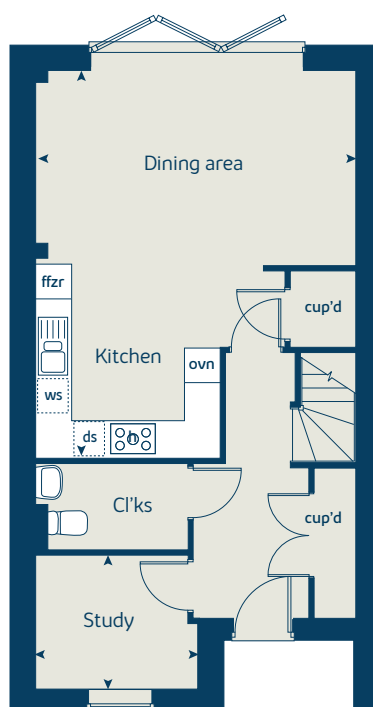
## Second floor



## First floor



## Ground floor





# The Weald

4 bedroom home

[bovishomes.co.uk](https://bovishomes.co.uk)

**Bovis  
Homes** 



# The Weald

## 4 bedroom home

Ground floor	metres	feet / inches
Kitchen / dining area	5.87 x 3.91	19' 3" x 12' 10"
Sitting room	4.93 x 4.57	16' 2" x 15' 0"
Family room	3.45 x 2.93	11' 4" x 9' 7"
Study	2.40 x 1.91	7' 11" x 6' 3"

First floor	metres	feet / inches
Bedroom 1	3.94 x 3.29	12' 11" x 10' 10"
Bedroom 2	4.57 x 2.92	15' 0" x 9' 7"
Bedroom 3	3.51 x 3.44	11' 6" x 11' 4"
Bedroom 4	3.47 x 3.35	11' 5" x 11' 0"

**The Weald | H8 Lindfield |**  
 This floorplan has been produced for illustrative purposes only. Room sizes shown are between arrow points as indicated on plan. The dimensions have tolerances of + or -50mm and should not be used other than for general guidance. If specific dimensions are required, enquiries should be made to the sales consultant.

\* Window omitted to plot 1 only. Please see sales consultant for further details.

ovn	oven	ffzr	fridge freezer
h	hob	w	wardrobe
ds	dishwasher space	cup'd	cupboard
ws	washing machine space	◀ ▶	measuring points

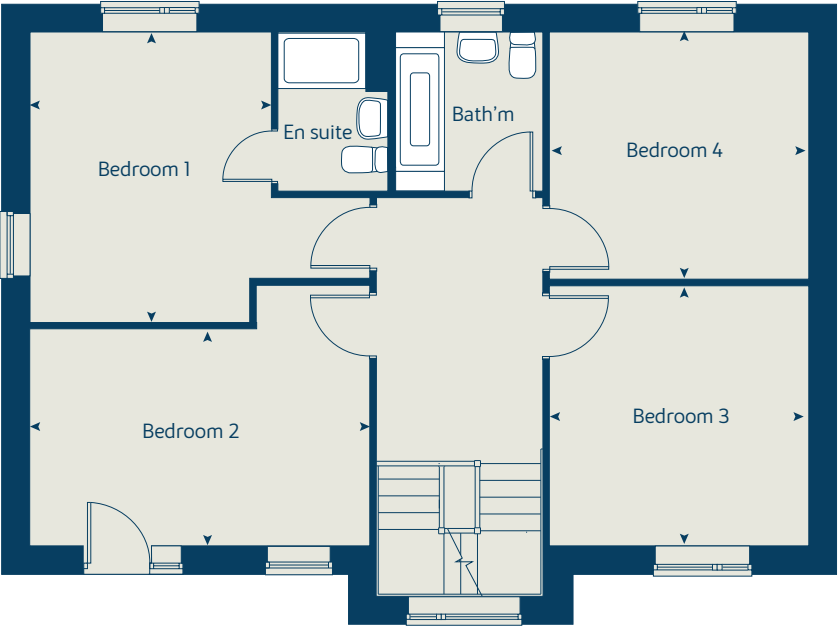
Please refer to the sales consultant for specific plot details as the illustrations shown are computer generated impressions of how the property may look so are indicative only. External details or finishes may vary on individual plots and homes may be built in either detached or attached styles depending on the development layout. Exact specifications, window styles and whether a property is left or right handed may differ from plot to plot.

The floorplans shown are not to scale. Measurements are based on the original drawings. Slight variations may occur during construction.

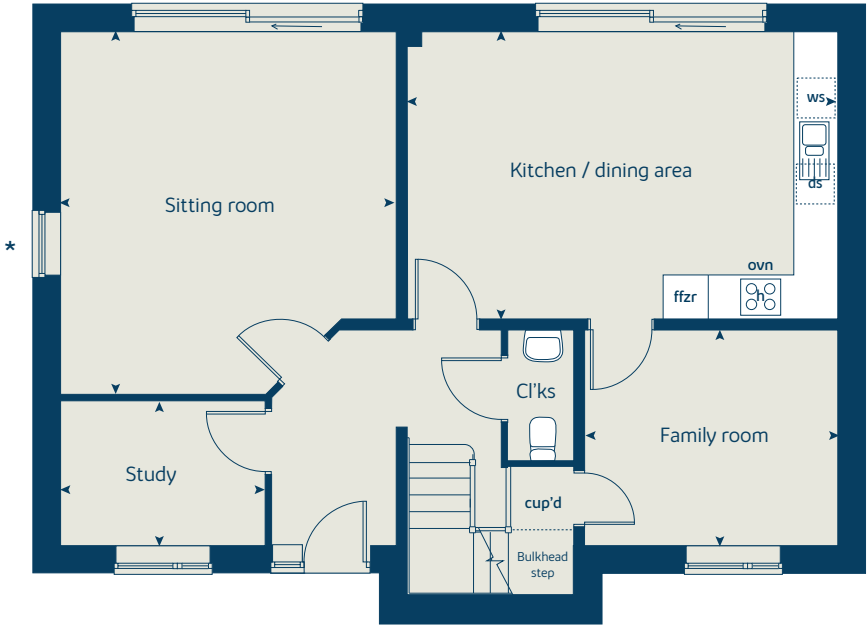
Produced by the Vistry Group Design Studio.  
 When you have finished with this leaflet please recycle it.  
 Lindfield DS06770 / 03.24



### First floor



### Ground floor





# The Sydney

5 bedroom home

[bovishomes.co.uk](http://bovishomes.co.uk)

**Bovis  
Homes** 

# The Sydney

## 5 bedroom home

Ground floor	metres	feet / inches
Kitchen	4.16 x 3.19	13' 8" x 10' 6"
Dining area	4.16 x 2.60	13' 8" x 8' 7"
Sitting room	5.20 x 3.73	17' 1" x 12' 3"
Study	3.73 x 1.98	12' 3" x 6' 6"
Bedroom 5	3.62 x 3.16	11' 11" x 10' 5"

### First floor

Bedroom 1	3.62 x 3.16	11' 11" x 10' 5"
Bedroom 2	3.77 x 3.08	12' 5" x 10' 2"
Bedroom 3	4.12 x 3.73	13' 6" x 12' 3"
Bedroom 4	4.16 x 2.87	13' 8" x 9' 5"

### The Sydney | H10 Lindfield |

This floorplan has been produced for illustrative purposes only. Room sizes shown are between arrow points as indicated on plan. The dimensions have tolerances of + or -50mm and should not be used other than for general guidance. If specific dimensions are required, enquiries should be made to the sales consultant.

ovn	oven	cyl	hot water cylinder
h	hob	w	wardrobe
ds	dishwasher space	cup'd	cupboard
ws	washing machine space	◀ ▶	measuring points
ffzr	fridge freezer		

Please refer to the sales consultant for specific plot details as the illustrations shown are computer generated impressions of how the property may look so are indicative only. External details or finishes may vary on individual plots and homes may be built in either detached or attached styles depending on the development layout. Exact specifications, window styles and whether a property is left or right handed may differ from plot to plot.

The floorplans shown are not to scale. Measurements are based on the original drawings. Slight variations may occur during construction.

Produced by the Vistry Group Design Studio.

When you have finished with this leaflet please recycle it.

Lindfield DS15001 / 12.25

### First floor



### Ground floor







# The Clover

5 bedroom home

[bovishomes.co.uk](http://bovishomes.co.uk)

**Bovis  
Homes** 

# The Clover

## 5 bedroom home

Ground floor	metres	feet / inches
Kitchen / dining area	6.43 x 5.42	21' 1" x 17' 9"
Sitting room	4.90 x 4.40	16' 1" x 14' 5"
Study	2.72 x 2.20	8' 11" x 7' 3"

First floor	metres	feet / inches
Bedroom 1	4.41 x 2.91	14' 6" x 9' 7"
Bedroom 3	3.42 x 3.20	11' 3" x 10' 6"
Bedroom 4	3.20 x 2.91	10' 6" x 9' 7"
Bedroom 5	3.67 x 2.13	12' 1" x 7' 0"

Second floor	metres	feet / inches
Bedroom 2	4.41 x 2.91	14' 6" x 9' 7"

**The Clover | H11 Lindfield |**  
 This floorplan has been produced for illustrative purposes only. Room sizes shown are between arrow points as indicated on plan. The dimensions have tolerances of + or -50mm and should not be used other than for general guidance. If specific dimensions are required, enquiries should be made to the sales consultant.

ovn	oven	cyl	hot water cylinder
h	hob	w	wardrobe
ds	dishwasher space	cup'd	cupboard
ws	washing machine space	◀ ▶	measuring points
ffzr	fridge freezer		

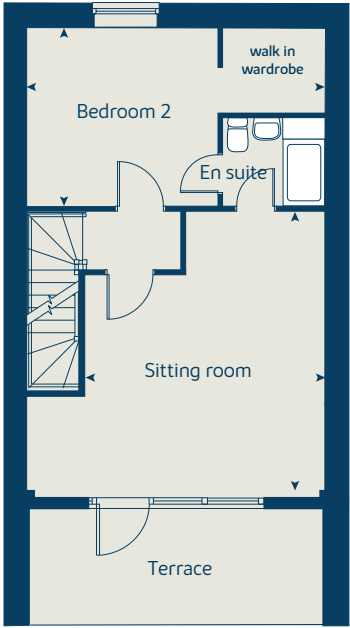
Please refer to the sales consultant for specific plot details as the illustrations shown are computer generated impressions of how the property may look so are indicative only. External details or finishes may vary on individual plots and homes may be built in either detached or attached styles depending on the development layout. Exact specifications, window styles and whether a property is left or right handed may differ from plot to plot.

The floorplans shown are not to scale. Measurements are based on the original drawings. Slight variations may occur during construction.

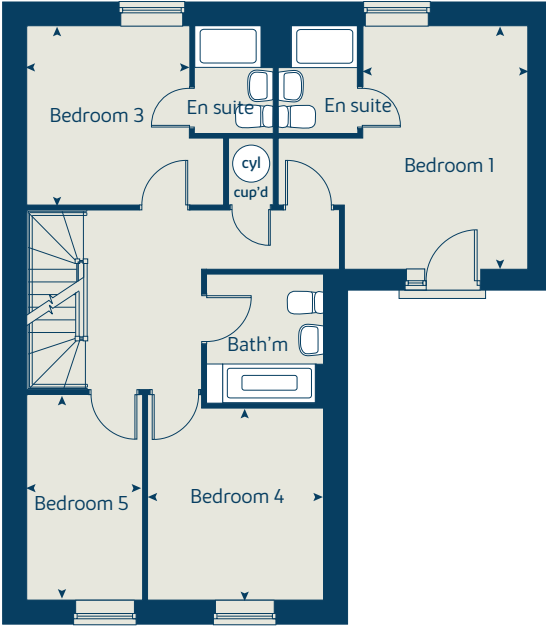
Produced by the Vistry Group Design Studio.  
 When you have finished with this leaflet please recycle it.  
 Lindfield DS15001 / 12.25



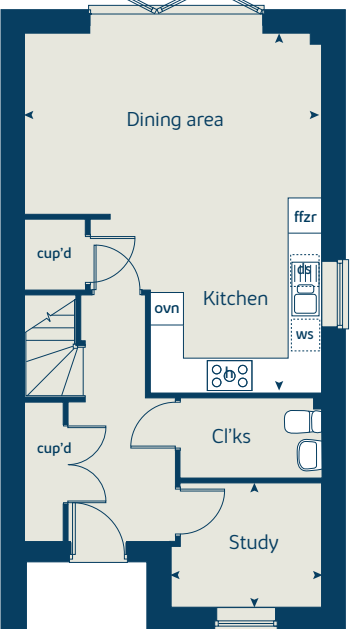
Second floor



First floor



Ground floor



This plan has been produced for home identification purposes only and may be subject to change.  
Please check the details of your chosen plot and house type with the sales consultant. Development  
layout plan correct at time of going to print.

**Vistry South East region**

Linden House, Guards Avenue, Caterham, Surrey CR3 5XL Telephone: 01883 334400

Produced by the Vistry Group Design Studio.

When you have finished with this leaflet please recycle it.

Lindfield DS15001 / 12.25

