

# ROMAN FIELDS

Banbury





ROMAN FIELDS  
BANBURY



Our name has been synonymous with building since 1885, when Charles William Bovis bought a construction company in the London Borough of Marylebone and changed its name to CW Bovis & Co.

From those foundations has grown a Bovis heritage to be proud of, including quality homes and communities across Britain.

# Welcome to Roman Fields

Our prestigious development of brand new homes are located on the desirable Warwick Road in Banbury.

Roman Fields offers a contemporary collection of 2, 3, 4 and 5 bedroom homes.





# A taste of local life

This stunning new development is just 2 miles from the centre of the charming Oxfordshire market town of Banbury, close to rolling countryside and with excellent transport links to major UK cities.

## Getting around

Roman Fields is just a 10 minute drive from the centre of Banbury. The closest motorway is the M40, where junction 11 links the area to Birmingham and the Midlands in the north and to Oxford and London to the south. Local buses serve outlying areas, while National Express runs coaches from Banbury to many UK towns and cities.

Trains run from Banbury to Warwick, Birmingham, Oxford and London and many other major locations. For air travel Birmingham Airport is just under 40 miles away.

## Taking time out

The town has a great choice of pubs and restaurants, a cinema and a live music venue. Bicester, just 17 miles away, is a fantastic location for places to visit, whether it's for scenic walks, a trip to the golf course, or a day out at Bicester Village, a designer shopping outlet with more than 130 luxury boutiques and stores. Historic Oxford - 'The city of dreaming spires' – is just 30 miles away and offers stunning architecture and many great attractions.

## A trip to the shops

A convenient Sainsbury's Local is located on the edge of the Roman Fields development, while Banbury town centre has an array of local independent shops and national names just 2 miles away.

The Castle Quays Shopping Centre offers around 85 high street stores to choose from and many dining options. Regular markets are held in the town centre offering everything from local produce to antiques and gifts. For city shopping Oxford is about 30 miles away.

## Education

Hardwick Primary School and North Oxfordshire Academy are both 1 mile from Roman Fields, while Hanwell Fields Community School is just under a mile and a half away. Banbury also offers a variety of schools and nurseries.

For further education, Banbury and Bicester College also offers a wide range of courses across several campuses in the area.

# Development layout

Roman Fields boasts a stunning range of two to five bedroom homes each with unique views and aspects. Discover your dream home in Banbury today.



**The Lime**  
5 bedroom homes



**The Yew**  
5 bedroom homes



**The Ashwood**  
5 bedroom homes



**The Pinewood**  
5 bedroom homes



**The Maple**  
4 bedroom homes



**The Aspen**  
4 bedroom homes



**The Knightwood**  
4 bedroom homes



**The Chestnut**  
4 bedroom homes



**The Mylnewood**  
4 bedroom homes



**The Attwood**  
3 bedroom homes



**The Cypress**  
3 bedroom homes



**The Jasmine**  
3 bedroom homes



**The Jasmine SE**  
3 bedroom homes



**The Spruce**  
3 bedroom homes



**The Linwood**  
3 bedroom homes



**The Mountwood**  
3 bedroom homes



**The Rowtree**  
3 bedroom homes



**The Holly**  
2 bedroom homes



**The Ivy**  
2 bedroom bungalows



**The Harwood**  
2 bedroom homes

## Pre-sold homes

- 1 bedroom homes
- 2 bedroom homes
- 3 bedroom homes
- 4 bedroom homes

- v visitor space
- ss substation
- bs bin store
- cs cycle store
- bcp bin collection point



The site plan shown on this page has been produced for home identification purposes only and is not to scale.

The development layout, landscaping and tenure of all dwellings may be subject to change throughout the course of the development. Homes shown as "pre sold" and other properties sold on the general market may not be sold to individual owner occupiers and may instead be transferred to other purchasers, including private investors or affordable housing providers. As partner arrangements are agreed, the mix of tenures across a development can change significantly and rapidly. Finishes and materials may vary from those shown. Please check the details of your chosen plot and house type with the sales consultant. Development layout plan correct at time of production.





# The Lime

## 5 bedroom home

Ground floor	metres	feet / inches
Kitchen / family / dining area	7.69 x 3.58	25' 3" x 11' 9"
Sitting room	5.39 x 3.86	17' 8" x 12' 8"
Dining room	3.86 x 2.77	12' 7" x 9' 1"
Study	3.58 x 2.54	11' 8" x 8' 4"

First floor	metres	feet / inches
Bedroom 1	4.05 x 3.75	13' 3" x 12' 3"
Bedroom 2	4.05 x 3.52	13' 3" x 11' 7"
Bedroom 3	3.26 x 3.23	10' 8" x 10' 7"
Bedroom 4	3.54 x 2.25	11' 8" x 7' 5"
Bedroom 5	2.86 x 2.64	9' 5" x 8' 8"

ovn	oven	ffzr	fridge freezer
h	hob	cyl	hot water cylinder
dw	dishwasher	cup'd	cupboard
ws	washing machine space	◀ ▶	measuring points

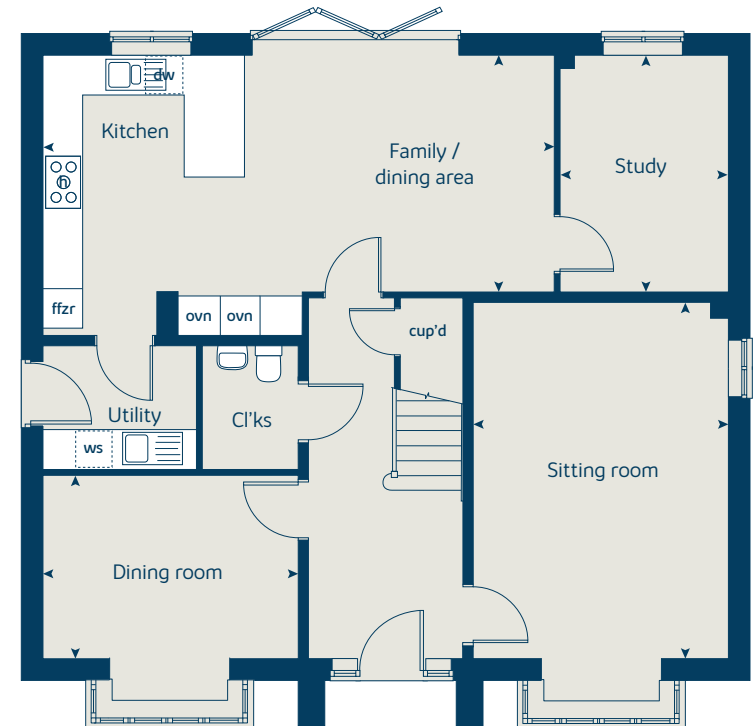
### The Lime | X520 (IF) vt CBAND |

The floorplan has been produced for illustrative purposes only. Room sizes shown are between arrow points as indicated on plan. The dimensions have tolerances of + or -50mm and should not be used other than for general guidance. If specific dimensions are required, enquiries should be made to the sales consultant. The floor plans shown are not to scale. Measurements are based on the original drawings. Slight variations may occur during construction.

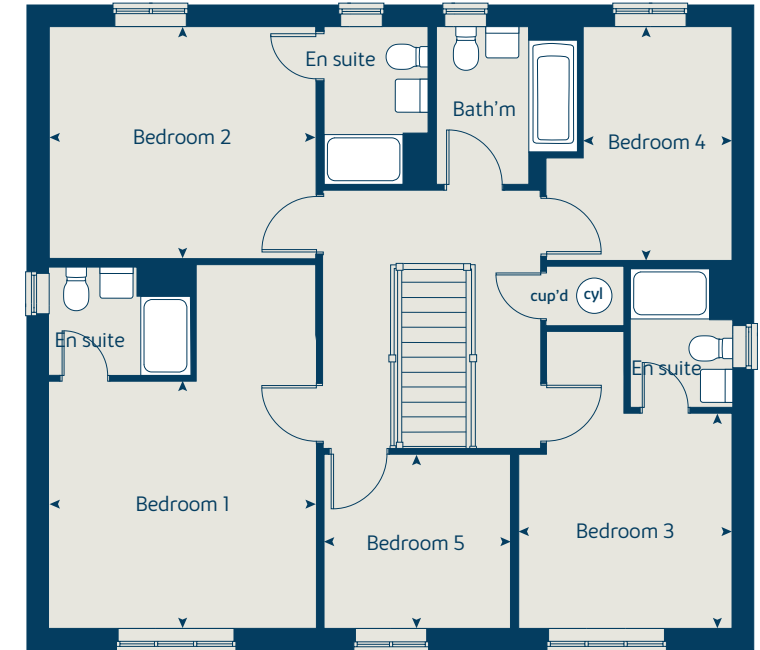
The illustrations shown are computer generated impressions of how the property may look and are indicative only. External details or finishes may vary on individual plots and homes may be built in either detached or attached styles depending on the development layout. Exact specifications, window styles and whether a property is left or right handed may differ from plot to plot. Please speak to our sales consultant for specific plot details.

\* Window omitted to selected plots only. Please see sales consultant for further details.

## Ground floor



## First floor



Floor area: 191 sq.m | 2,063 sq.ft



# The Yew

## 5 bedroom home

Ground floor	metres	feet / inches
Kitchen / dining area	8.44 x 3.16	27' 8" x 10' 4"
Kitchen / dining area*	6.54 x 5.07	21' 5" x 16' 8"
Sitting room	4.69 x 3.17	15' 4" x 10' 5"
Study	3.17 x 1.76	10' 5" x 5' 9"

First floor	metres	feet / inches
Bedroom 1	4.18 x 3.73	12' 3" x 13' 8"
Bedroom 3	4.20 x 3.23	13' 9" x 10' 7"
Bedroom 5	2.91 x 2.27	9' 7" x 7' 5"

Second floor	metres	feet / inches
Bedroom 2	5.03 x 3.22	16' 6" x 10' 7"
Bedroom 4	3.73 x 2.86	12' 3" x 9' 5"

ovn	oven	cup'd	cupboard
h	hob	ldr	larder
dw	dishwasher	cyl	hot water cylinder
ws	washing machine space	◀ ▶	measuring points
ffzr	fridge freezer		

### The Yew | X519 CBAND |

The floorplan has been produced for illustrative purposes only. Room sizes shown are between arrow points as indicated on plan. The dimensions have tolerances of + or -50mm and should not be used other than for general guidance. If specific dimensions are required, enquiries should be made to the sales consultant. The floor plans shown are not to scale. Measurements are based on the original drawings. Slight variations may occur during construction.

The illustrations shown are computer generated impressions of how the property may look and are indicative only. External details or finishes may vary on individual plots and homes may be built in either detached or attached styles depending on the development layout. Exact specifications, window styles and whether a property is left or right-handed may differ from plot to plot. Please speak to our sales consultant for specific plot details.

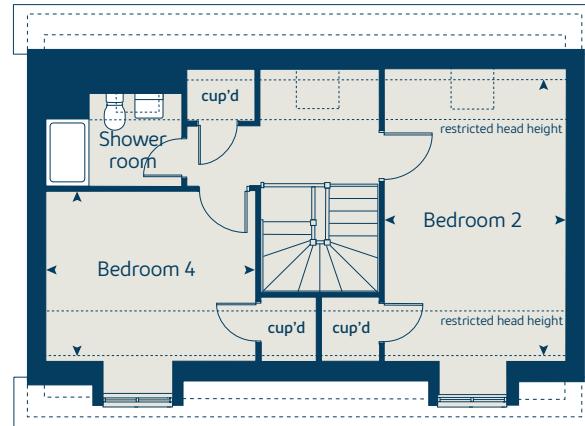
① Alternative layout applies to selected plots only.

② Alternative window layout applies to selected plots only.

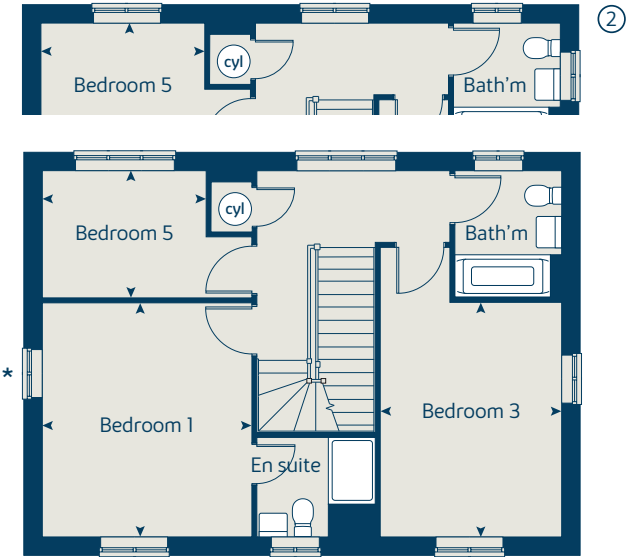
\* Window applies to selected plots only.

Please see sales consultant for further details.

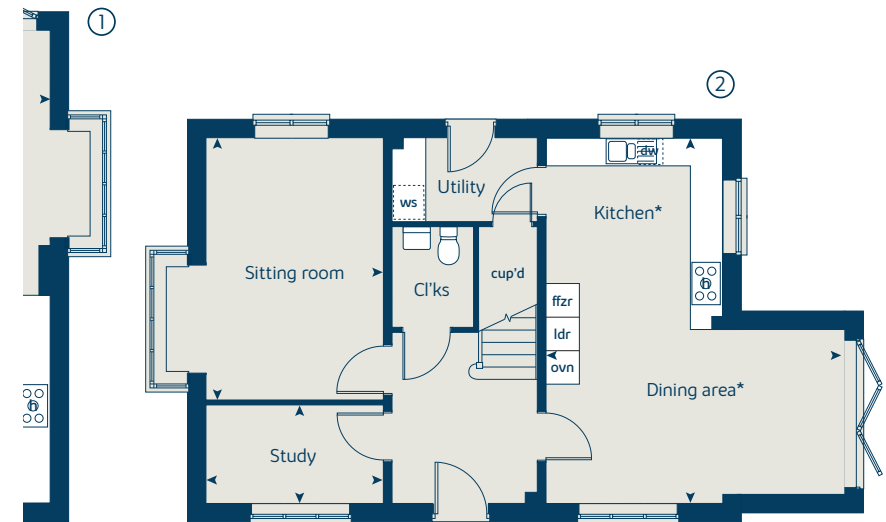
### Second floor



### First floor



### Ground floor



Floor area: 170 sq.m | 1,832 sq.ft



# The Ashwood

5 bedroom home

Ground floor	metres	feet / inches
Kitchen / dining area	5.30 x 4.40	17' 5" x 14' 5"
Sitting room	6.54 x 3.67	21' 5" x 12' 1"
Family room	4.00 x 3.14	13' 1" x 10' 3"

First floor	metres	feet / inches
Bedroom 1	5.30 x 3.51	17' 5" x 11' 6"
Bedroom 2	3.14 x 2.80	10' 3" x 9' 2"
Bedroom 3	3.92 x 3.67	12' 10" x 12' 1"
Bedroom 4	3.67 x 2.52	12' 1" x 8' 3"
Bedroom 5	2.39 x 2.30	7' 10" x 7' 6"

ovn	oven	ffzr	fridge freezer
h	hob	cup'd	cupboard
ws	washing machine space	cyl	hot water cylinder
dw	dishwasher	◀ ▶	measuring points

## The Ashwood | WM406 CBAND |

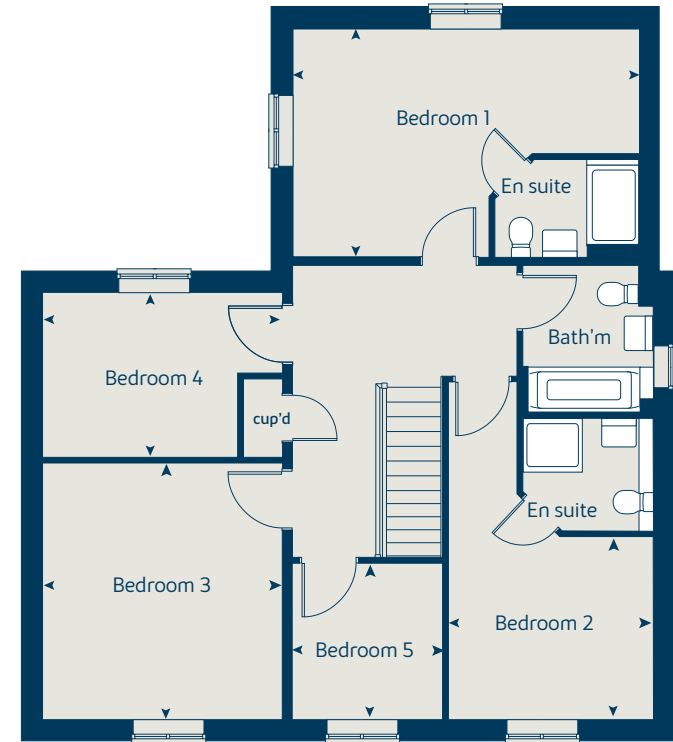
The floorplan has been produced for illustrative purposes only. Room sizes shown are between arrow points as indicated on plan. The dimensions have tolerances of + or -50mm and should not be used other than for general guidance. If specific dimensions are required, enquiries should be made to the sales consultant. The floor plans shown are not to scale. Measurements are based on the original drawings. Slight variations may occur during construction.

The illustrations shown are computer generated impressions of how the property may look and are indicative only. External details or finishes may vary on individual plots and homes may be built in either detached or attached styles depending on the development layout. Exact specifications, window styles and whether a property is left or right-handed may differ from plot to plot. Please speak to our sales consultant for specific plot details.

Ground floor



First floor



Floor area: 167 sq.m | 1,798 sq.ft



# The Pinewood

5 bedroom home

Ground floor	metres	feet / inches
Kitchen	2.99 x 2.98	9' 10" x 9' 9"
Dining area	3.73 x 2.81	12' 3" x 9' 3"
Sitting room	4.82 x 3.40	15' 10" x 11' 2"
Study	3.40 x 1.80	11' 2" x 5' 11"

First floor	metres	feet / inches
Bedroom 2	3.85 x 3.35	12' 8" x 11' 0"
Bedroom 3	3.35 x 2.77	11' 0" x 9' 1"
Bedroom 4	3.03 x 2.87	9' 11" x 9' 5"
Bedroom 5	3.59 x 2.05	11' 9" x 6' 9"

Second floor	metres	feet / inches
Bedroom 1	5.44 x 3.03	17' 10" x 9' 11"

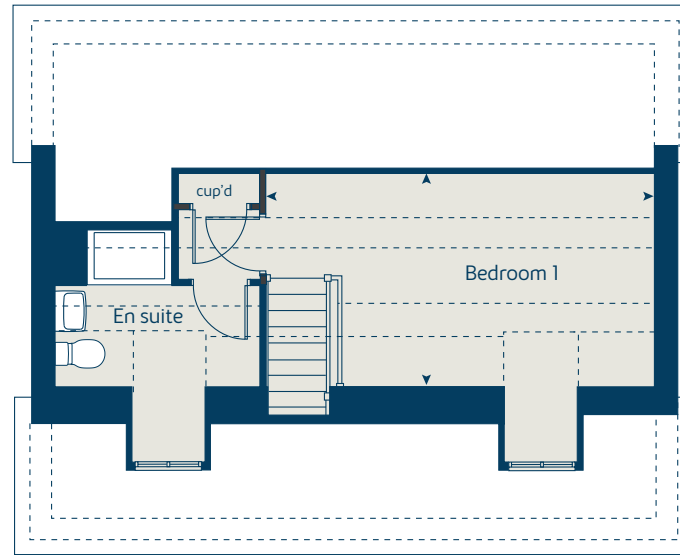
h	hob	ws	washing machine space
ovn	oven	cup'd	cupboard
ffzr	fridge freezer	< >	measuring points
dw	dishwasher		

## The Pinewood | CBAND |

The floorplan has been produced for illustrative purposes only. Room sizes shown are between arrow points as indicated on plan. The dimensions have tolerances of + or -50mm and should not be used other than for general guidance. If specific dimensions are required, enquiries should be made to the sales consultant. The floor plans shown are not to scale. Measurements are based on the original drawings. Slight variations may occur during construction.

The illustrations shown are computer generated impressions of how the property may look and are indicative only. External details or finishes may vary on individual plots and homes may be built in either detached or attached styles depending on the development layout. Exact specifications, window styles and whether a property is left or right-handed may differ from plot to plot. Please speak to our sales consultant for specific plot details.

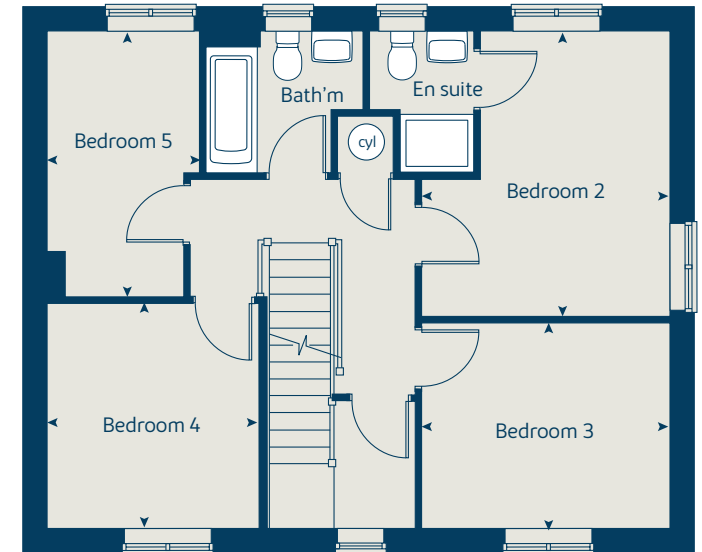
## Second floor



## Ground floor



## First floor



Floor area: 140 sq.m | 1,512 sq.ft



# The Maple

4 bedroom home

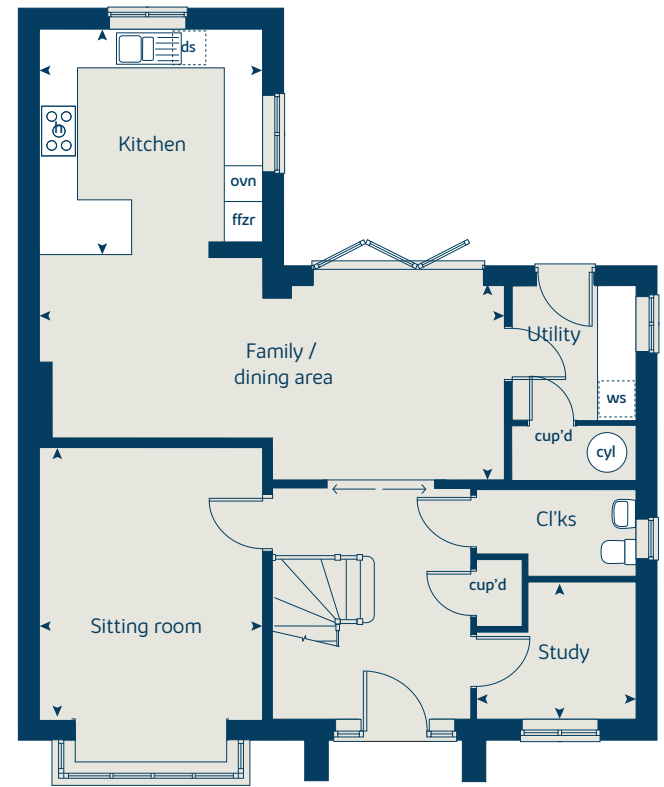
Ground floor	metres	feet / inches
Kitchen	3.78 x 3.50	12' 4" x 11' 5"
Family / dining area	7.28 x 3.23	23' 11" x 10' 7"
Sitting room	4.50 x 3.50	14' 9" x 11' 6"
Study	2.50 x 2.29	8' 2" x 7' 6"

First floor	metres	feet / inches
Bedroom 1	3.60 x 3.50	11' 10" x 11' 6"
Bedroom 2	4.31 x 3.56	14' 2" x 11' 8"
Bedroom 3	4.17 x 2.90	13' 8" x 9' 6"
Bedroom 4	2.95 x 2.90	9' 8" x 9' 6"

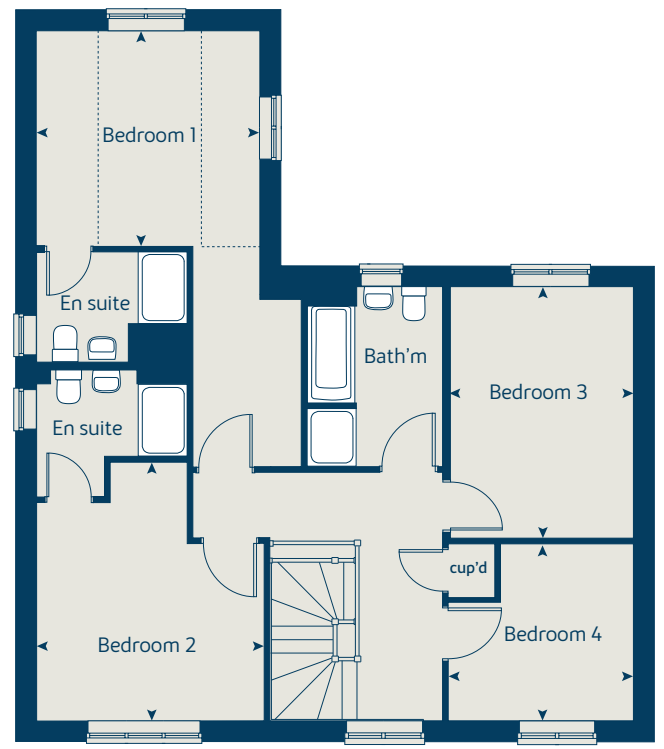
ovn	oven	ffzr	fridge freezer
h	hob	cyl	hot water cylinder
ds	dishwasher space	cup'd	cupboard
ws	washing machine space	◀ ▶	measuring points

**The Maple | X416 01 vt CBAND |**  
 The floorplan has been produced for illustrative purposes only. Room sizes shown are between arrow points as indicated on plan. The dimensions have tolerances of + or -50mm and should not be used other than for general guidance. If specific dimensions are required, enquiries should be made to the sales consultant. The floor plans shown are not to scale. Measurements are based on the original drawings. Slight variations may occur during construction.  
 The illustrations shown are computer generated impressions of how the property may look and are indicative only. External details or finishes may vary on individual plots and homes may be built in either detached or attached styles depending on the development layout. Exact specifications, window styles and whether a property is left or right-handed may differ from plot to plot. Please speak to our sales consultant for specific plot details.

Ground floor



First floor



Floor area: 166 sq.m | 1,792 sq.ft



# The Aspen

4 bedroom home

Ground floor	metres	feet / inches
Kitchen / dining area	7.76 x 3.37	25' 5" x 11' 1"
Sitting room	5.66 x 3.39	16' 6" x 11' 1"
Study	2.69 x 2.02	8' 10" x 6' 7"

First floor	metres	feet / inches
Bedroom 1	4.52 x 3.81	14' 10" x 12' 6"
Bedroom 2	3.87 x 3.78	12' 8" x 12' 5"
Bedroom 3	4.07 x 2.42	13' 4" x 7' 11"
Bedroom 4	3.61 x 2.42	11' 10" x 7' 11"

ovn	oven	ffzr	fridge freezer
h	hob	ldr	larder
ds	dishwasher space	cup'd	cupboard
ws	washing machine space	◀ ▶	measuring points

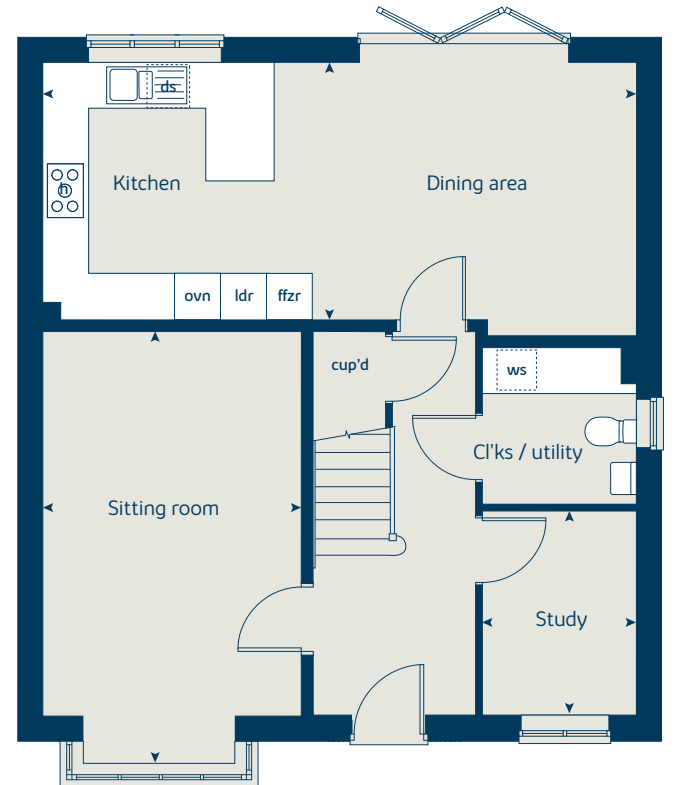
## The Aspen | X414 (IF) vt CBAND |

The floorplan has been produced for illustrative purposes only. Room sizes shown are between arrow points as indicated on plan. The dimensions have tolerances of + or -50mm and should not be used other than for general guidance. If specific dimensions are required, enquiries should be made to the sales consultant. The floor plans shown are not to scale. Measurements are based on the original drawings. Slight variations may occur during construction.

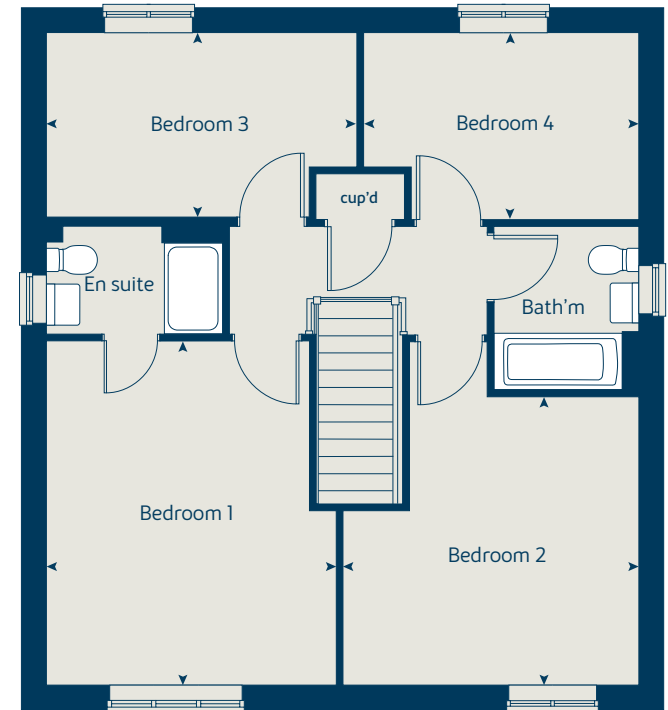
The illustrations shown are computer generated impressions of how the property may look and are indicative only. External details or finishes may vary on individual plots and homes may be built in either detached or attached styles depending on the development layout. Exact specifications, window styles and whether a property is left or right handed may differ from plot to plot. Please speak to our sales consultant for specific plot details.

\* Window applicable to selected plots only. Please see sales consultant for further information.

Ground floor



First floor



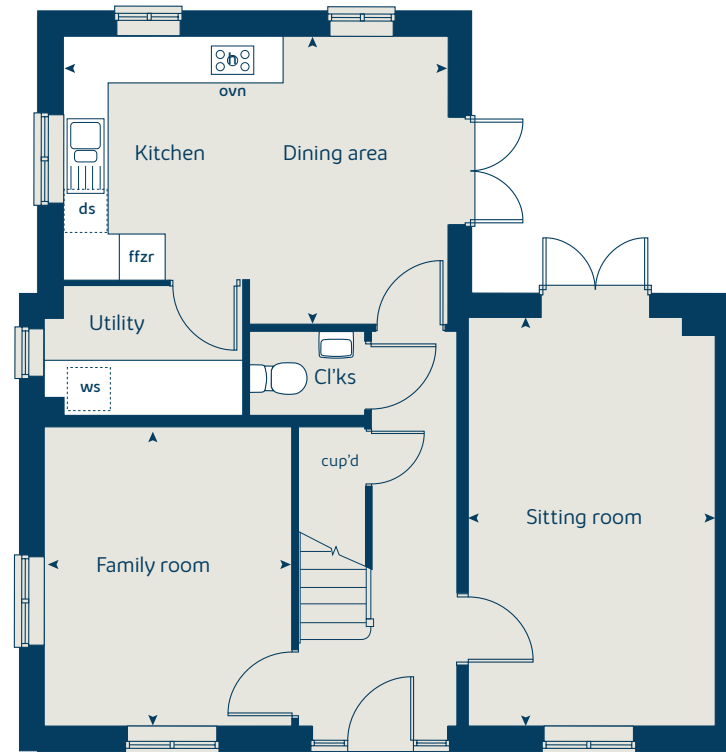
Floor area: 134 sq.m | 1,449 sq.ft



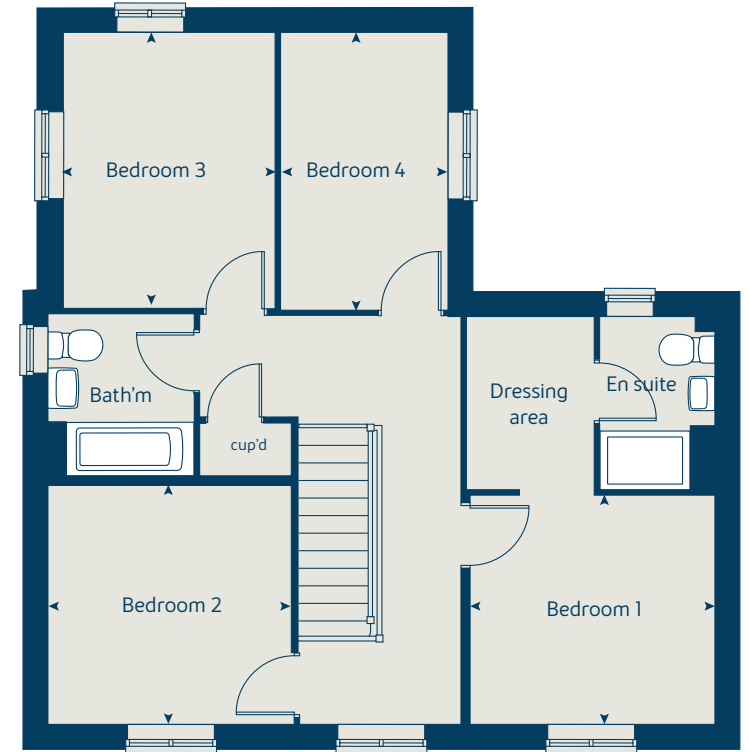
# The Knightwood

4 bedroom home

Ground floor



First floor



Ground floor	metres	feet / inches
Kitchen / dining area	5.02 x 3.79	16' 6" x 12' 5"
Sitting room	5.36 x 3.22	17' 7" x 10' 7"
Family room	3.93 x 3.21	12' 1" x 10' 6"

First floor	metres	feet / inches
Bedroom 1	3.20 x 2.98	10' 6" x 9' 9"
Bedroom 2	3.21 x 3.13	10' 6" x 10' 3"
Bedroom 3	3.62 x 2.79	11' 11" x 9' 2"
Bedroom 4	3.62 x 2.15	11' 11" x 7' 1"

h	hob	ws	washing machine space
ovn	oven	cup'd	cupboard
ffzr	fridge freezer	< >	measuring points
ds	dishwasher space		

## The Knightwood | CKN100 CBAND |

The floorplan has been produced for illustrative purposes only. Room sizes shown are between arrow points as indicated on plan. The dimensions have tolerances of + or -50mm and should not be used other than for general guidance. If specific dimensions are required, enquiries should be made to the sales consultant. The floor plans shown are not to scale. Measurements are based on the original drawings. Slight variations may occur during construction.

The illustrations shown are computer generated impressions of how the property may look and are indicative only. External details or finishes may vary on individual plots and homes may be built in either detached or attached styles depending on the development layout. Exact specifications, window styles and whether a property is left or right-handed may differ from plot to plot. Please speak to our sales consultant for specific plot details.

Floor area: 132 sq.m | 1,429 sq.ft



# The Chestnut

## 4 bedroom home

Ground floor	metres	feet / inches
Kitchen	3.91 x 3.04	12' 10" x 10' 0"
Dining / family area	4.59 x 2.96	15' 0" x 9' 9"
Sitting room	4.97 x 3.40	16' 4" x 11' 2"
Study	3.40 x 1.81	11' 2" x 5' 11"

### First floor

Bedroom 1	4.47 x 3.24	14' 8" x 10' 8"
Bedroom 2	3.43 x 3.36	11' 3" x 11' 0"
Bedroom 3	3.42 x 2.31	11' 3" x 7' 7"
Bedroom 4	3.20 x 2.35	10' 6" x 7' 8"

ovn	oven	ffzr	fridge freezer
h	hob	cup'd	cupboard
ws	washing machine space	ldr	larder
ds	dishwasher space	< >	measuring points

### The Chestnut | X413 CBAND |

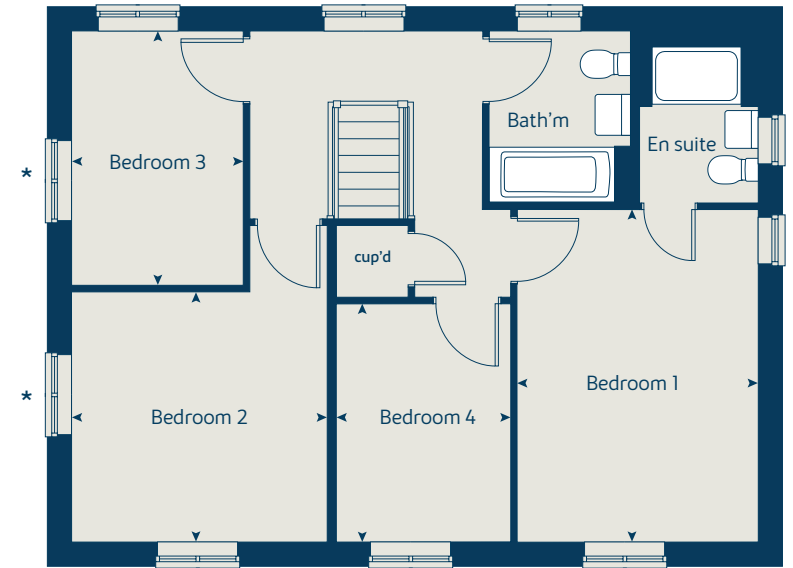
The floorplan has been produced for illustrative purposes only. Room sizes shown are between arrow points as indicated on plan. The dimensions have tolerances of + or -50mm and should not be used other than for general guidance. If specific dimensions are required, enquiries should be made to the sales consultant. The floor plans shown are not to scale. Measurements are based on the original drawings. Slight variations may occur during construction.

The illustrations shown are computer generated impressions of how the property may look and are indicative only. External details or finishes may vary on individual plots and homes may be built in either detached or attached styles depending on the development layout. Exact specifications, window styles and whether a property is left or right-handed may differ from plot to plot. Please speak to our sales consultant for specific plot details.

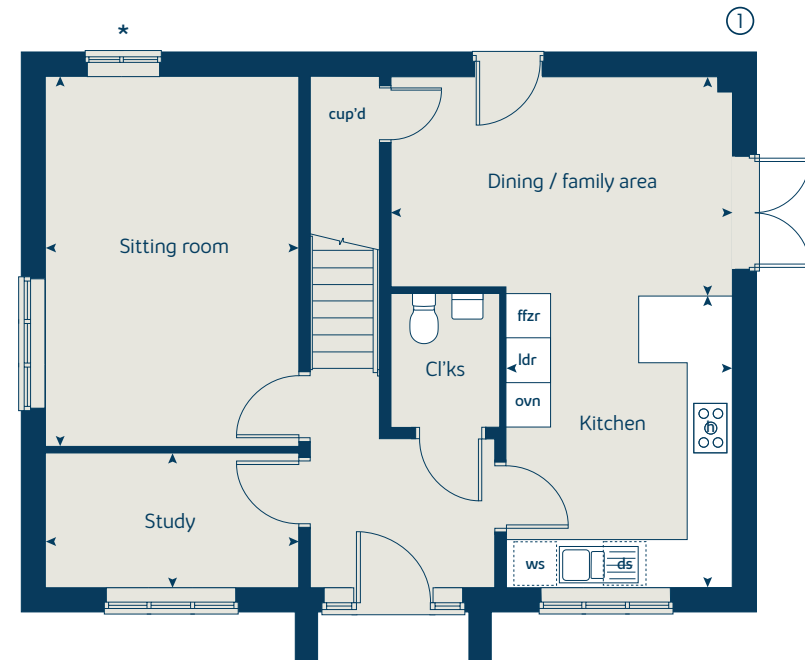
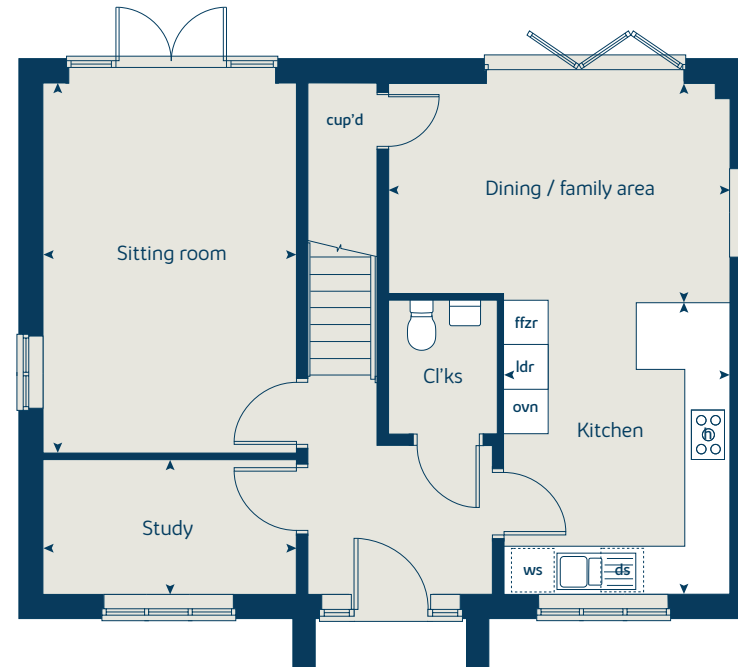
① Alternative layout to selected plots only. Please see sales consultant for further details.

\* Windows apply to selected plots only. Please see sales consultant for further details.

### First floor



### Ground floor



Floor area: 127 sq.m | 1,368 sq.ft



# The Mylnewood

4 bedroom home

Ground floor	metres	feet / inches
Kitchen / dining / family area	6.02 x 3.75	19' 9" x 12' 4"
Sitting room	4.83 x 3.39	15' 10" x 11' 2"

First floor	metres	feet / inches
Bedroom 1	3.93 x 2.95	12' 11" x 9' 8"
Bedroom 2	3.20 x 2.51	10' 6" x 8' 3"
Bedroom 3	3.43 x 2.18	11' 3" x 7' 2"
Bedroom 4	3.00 x 2.92	9' 10" x 9' 7"

h	hob	ws	washing machine space
ovn	oven	cup'd	cupboard
ffzr	fridge freezer	< >	measuring points
ds	dishwasher space		

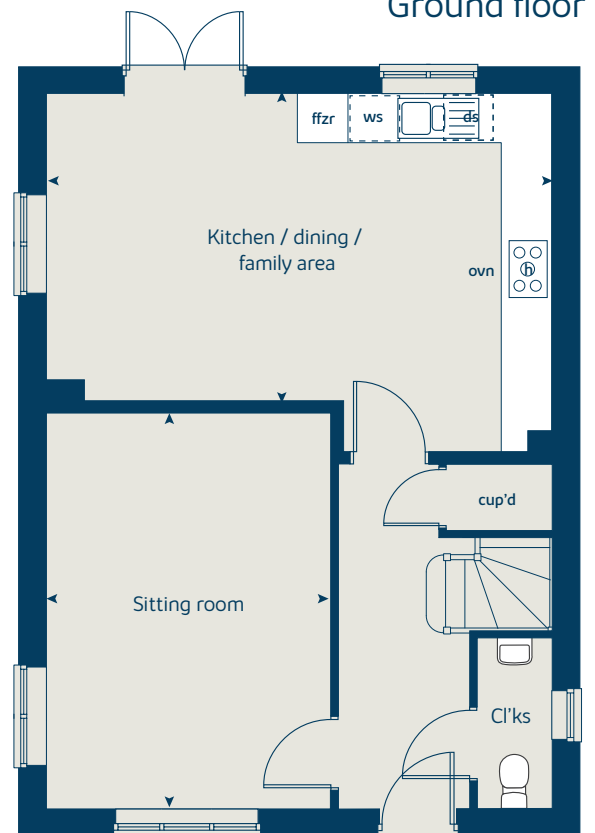
## The Mylnewood | L1136 CBAND |

The floorplan has been produced for illustrative purposes only. Room sizes shown are between arrow points as indicated on plan. The dimensions have tolerances of + or -50mm and should not be used other than for general guidance. If specific dimensions are required, enquiries should be made to the sales consultant. The floor plans shown are not to scale. Measurements are based on the original drawings. Slight variations may occur during construction.

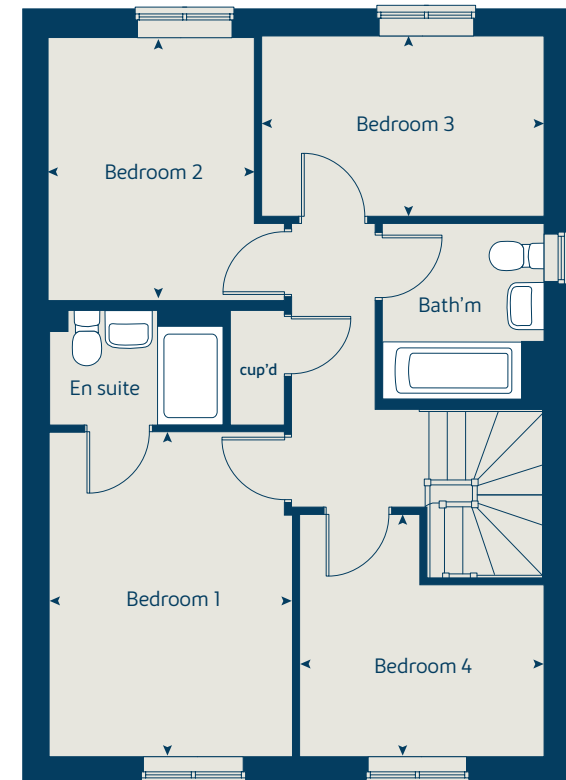
The illustrations shown are computer generated impressions of how the property may look and are indicative only. External details or finishes may vary on individual plots and homes may be built in either detached or attached styles depending on the development layout. Exact specifications, window styles and whether a property is left or right-handed may differ from plot to plot. Please speak to our sales consultant for specific plot details.

\* Window applies to selected plots only. Please see sales consultant for further details.

Ground floor



First floor



Floor area: 105 sq.m | 1,136 sq.ft



# The Attwood

## 3 bedroom home

Ground floor	metres	feet / inches
Kitchen / dining area	4.56 x 2.01	14' 11" x 6' 7"
Living room	4.08 x 2.74	13' 5" x 9' 0"

First floor	metres	feet / inches
Bedroom 2	4.08 x 2.82	13' 5" x 9' 3"
Bedroom 3	2.65 x 1.93	8' 8" x 6' 4"

Second floor	metres	feet / inches
Bedroom 1	4.46 x 3.70	14' 8" x 12' 2"
Bedroom 1*	4.07 x 3.46	13' 4" x 11' 4"

h	hob	ws	washing machine space
ovn	oven	cup'd	cupboard
ffzs	fridge freezer space	< >	measuring points
ds	dishwasher space		

### The Attwood | V & V4 CBAND |

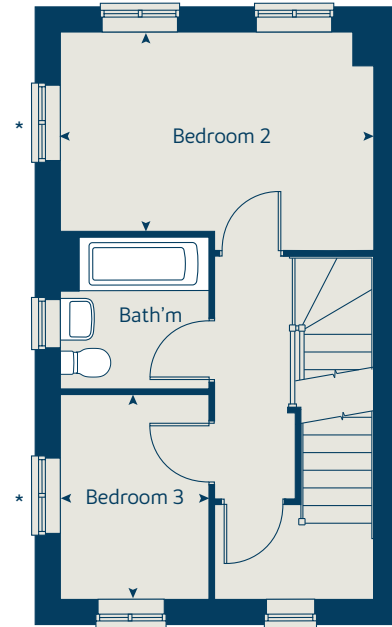
The floorplan has been produced for illustrative purposes only. Room sizes shown are between arrow points as indicated on plan. The dimensions have tolerances of + or -50mm and should not be used other than for general guidance. If specific dimensions are required, enquiries should be made to the sales consultant. The floor plans shown are not to scale. Measurements are based on the original drawings. Slight variations may occur during construction.

The illustrations shown are computer generated impressions of how the property may look and are indicative only. External details or finishes may vary on individual plots and homes may be built in either detached or attached styles depending on the development layout. Exact specifications, window styles and whether a property is left or right-handed may differ from plot to plot. Please speak to our sales consultant for specific plot details.

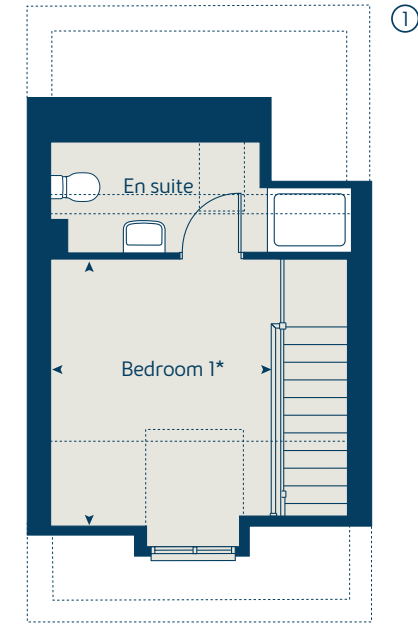
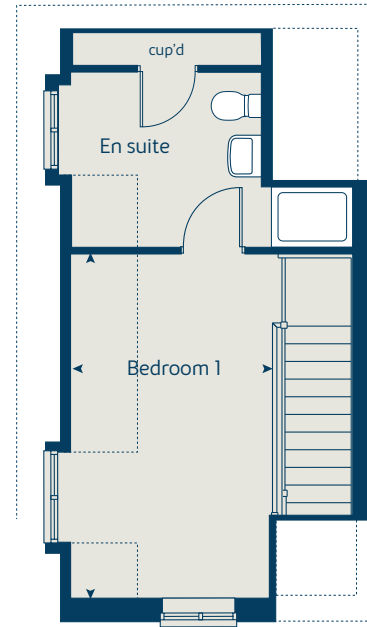
\* Windows apply to selected plots only. Please speak to our sales consultant for further details.

① Alternative layout applies to selected plots only. Please speak to our sales consultant for further details.

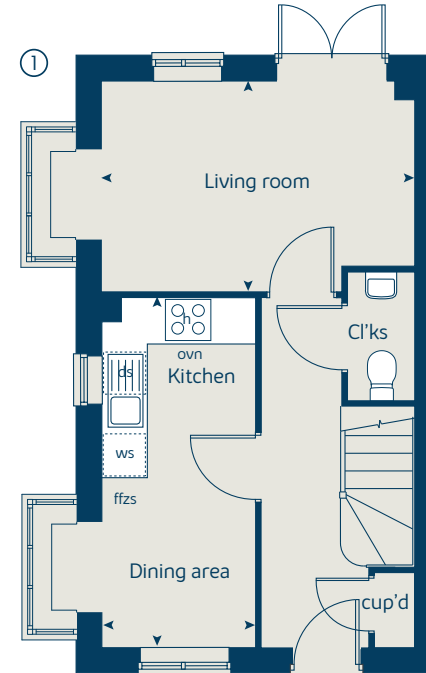
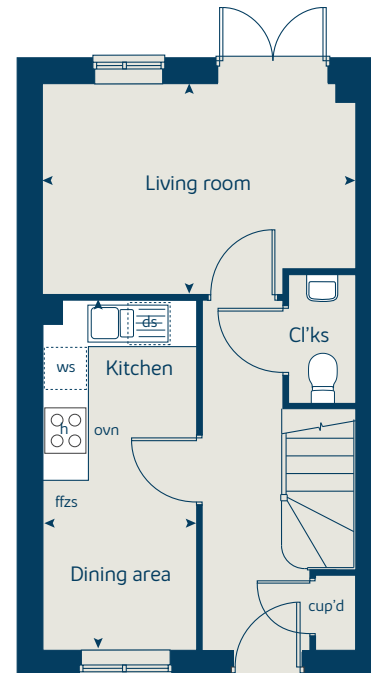
First floor



Second floor



Ground floor



Floor area: 83 sq.m | 895 sq.ft



# The Cypress

3 bedroom home

Ground floor	metres	feet / inches
Kitchen / dining area	5.52 x 3.13	18' 1" x 10' 3"
Sitting room	4.40 x 3.40	14' 5" x 11' 2"

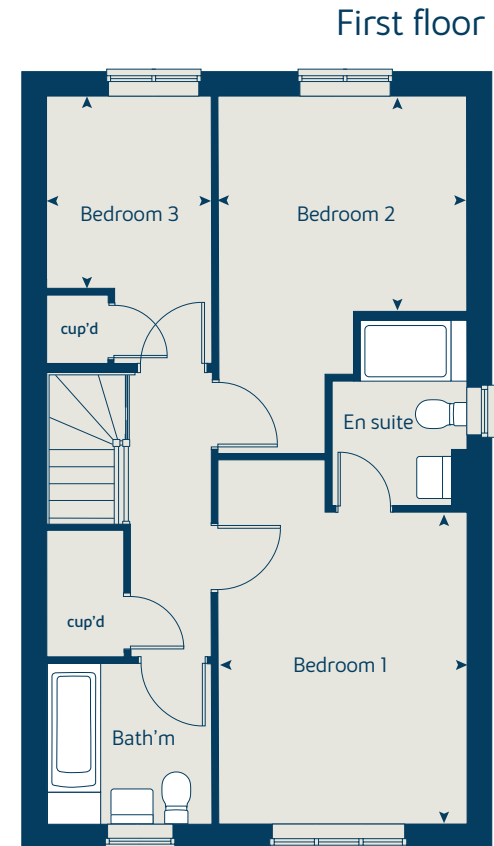
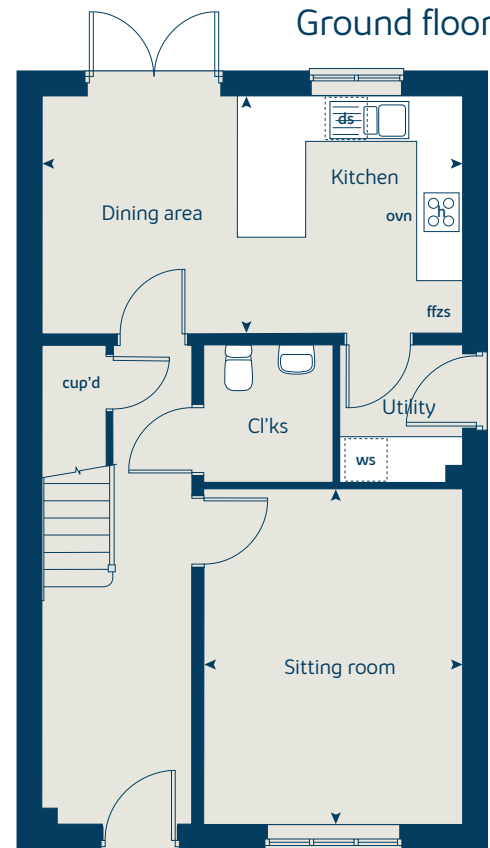
First floor	metres	feet / inches
Bedroom 1	4.10 x 3.27	13' 5" x 10' 9"
Bedroom 2	3.27 x 2.82	10' 9" x 9' 3"
Bedroom 3	2.53 x 2.16	8' 3" x 7' 1"

ovn	oven	ffzs	fridge freezer space
h	hob	cup'd	cupboard
ds	dishwasher space	◀ ▶	measuring points
ws	washing machine space		

## The Cypress | X308 (IF) 01 CBAND |

The floorplan has been produced for illustrative purposes only. Room sizes shown are between arrow points as indicated on plan. The dimensions have tolerances of + or -50mm and should not be used other than for general guidance. If specific dimensions are required, enquiries should be made to the sales consultant. The floor plans shown are not to scale. Measurements are based on the original drawings. Slight variations may occur during construction.

The illustrations shown are computer generated impressions of how the property may look and are indicative only. External details or finishes may vary on individual plots and homes may be built in either detached or attached styles depending on the development layout. Exact specifications, window styles and whether a property is left or right-handed may differ from plot to plot. Please speak to our sales consultant for specific plot details.



Floor area: 105 sq.m | 1,139 sq.ft



# The Jasmine

3 bedroom home

Ground floor	metres	feet / inches
Kitchen / dining area	5.52 x 3.36	18' 1" x 11' 0"
Sitting room	5.52 x 3.32	18' 1" x 10' 11"

First floor	metres	feet / inches
Bedroom 1	5.52 x 2.94	18' 1" x 9' 8"
Bedroom 2	3.59 x 2.93	11' 10" x 9' 7"
Bedroom 3	3.59 x 2.17	11' 10" x 7' 1"

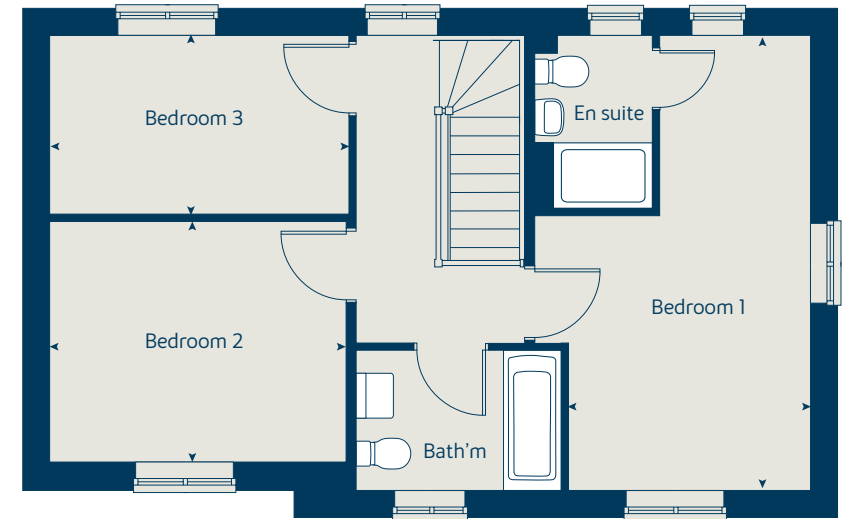
ovn	oven	ffzs	fridge freezer space
h	hob	cup'd	cupboard
ds	dishwasher space	◀ ▶	measuring points
ws	washing machine space		

## The Jasmine | X307 SE (IF) CBAND |

The floorplan has been produced for illustrative purposes only. Room sizes shown are between arrow points as indicated on plan. The dimensions have tolerances of + or -50mm and should not be used other than for general guidance. If specific dimensions are required, enquiries should be made to the sales consultant. The floor plans shown are not to scale. Measurements are based on the original drawings. Slight variations may occur during construction.

The illustrations shown are computer generated impressions of how the property may look and are indicative only. External details or finishes may vary on individual plots and homes may be built in either detached or attached styles depending on the development layout. Exact specifications, window styles and whether a property is left or right-handed may differ from plot to plot. Please speak to our sales consultant for specific plot details.

## First floor



## Ground floor



Floor area: 104 sq.m | 1,123 sq.ft



# The Spruce

3 bedroom home

Ground floor	metres	feet / inches
Kitchen / dining area	5.52 x 3.14	18' 1" x 10' 4"
Sitting room	5.52 x 3.32	18' 1" x 10' 1"

First floor	metres	feet / inches
Bedroom 1	5.52 x 3.35	18' 1" x 11' 0"
Bedroom 2	3.59 x 3.26	11' 10" x 10' 9"
Bedroom 3	3.59 x 2.17	11' 10" x 7' 1"

ovn	oven	ffzs	fridge freezer space
h	hob	cup'd	cupboard
ds	dishwasher space	< >	measuring points
ws	washing machine space		

## The Spruce | X307 (IF) CBAND |

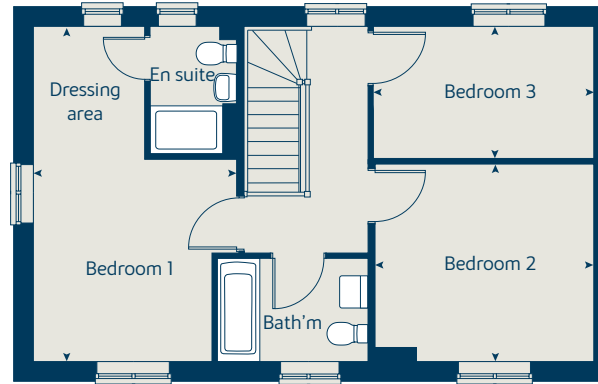
The floorplan has been produced for illustrative purposes only. Room sizes shown are between arrow points as indicated on plan. The dimensions have tolerances of + or -50mm and should not be used other than for general guidance. If specific dimensions are required, enquiries should be made to the sales consultant. The floor plans shown are not to scale. Measurements are based on the original drawings. Slight variations may occur during construction.

The illustrations shown are computer generated impressions of how the property may look and are indicative only. External details or finishes may vary on individual plots and homes may be built in either detached or attached styles depending on the development layout. Exact specifications, window styles and whether a property is left or right-handed may differ from plot to plot. Please speak to our sales consultant for specific plot details.

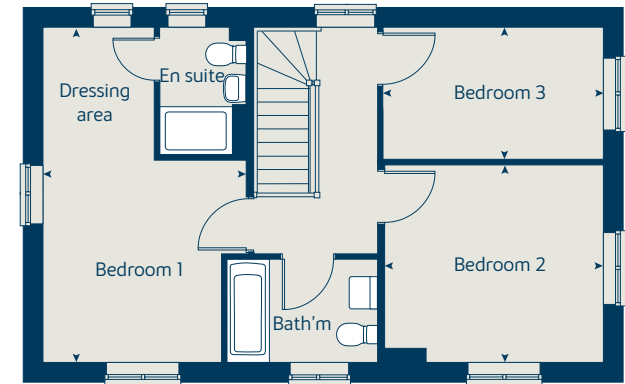
① Alternative layout applies to selected plots only. Please see sales consultant for further details.

\* Window omitted to selected plots only. Please see sales consultant for further details.

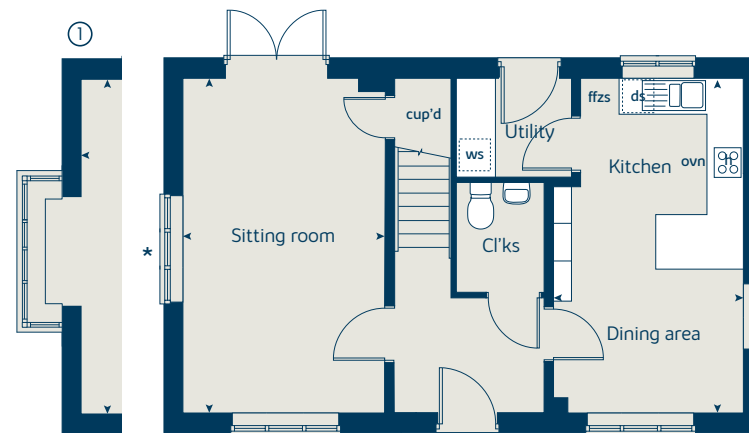
First floor



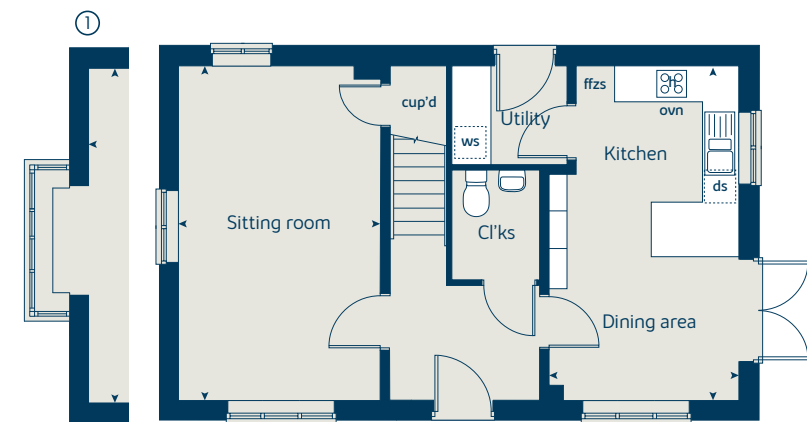
First floor to selected plots



Ground floor



Ground floor to selected plots



Floor area: 102 sq.m | 1,099 sq.ft



# The Linwood

## 3 bedroom home

Ground floor	metres	feet / inches
Kitchen / dining area	4.76 x 2.80	15' 7" x 9' 2"
Living room	4.98 x 3.21	16' 4" x 10' 6"

First floor	metres	feet / inches
Bedroom 2	4.98 x 4.20	16' 4" x 13' 9"
Bedroom 3	3.77 x 2.77	12' 4" x 9' 1"
Study/potential bedroom 4	3.19 x 1.77	10' 6" x 5' 10"

Second floor	metres	feet / inches
Bedroom 1	4.47 x 3.88	14' 1" x 12' 9"

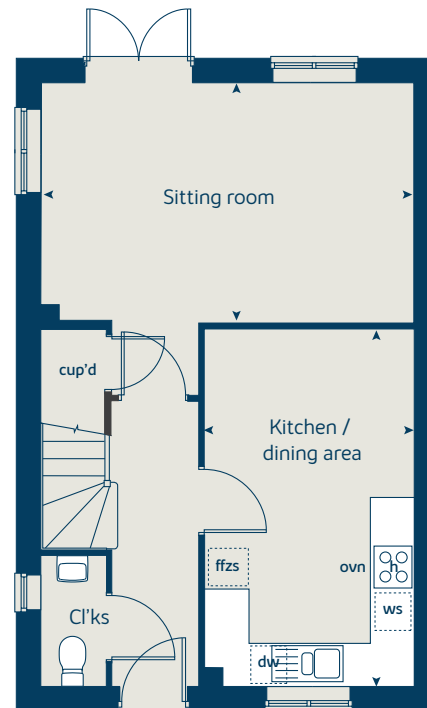
h	hob	ds	dishwasher space
ovn	oven	cup'd	cupboard
ffzs	fridge freezer space	< >	measuring points
ws	washing machine space		

### The Linwood | vt CBAND |

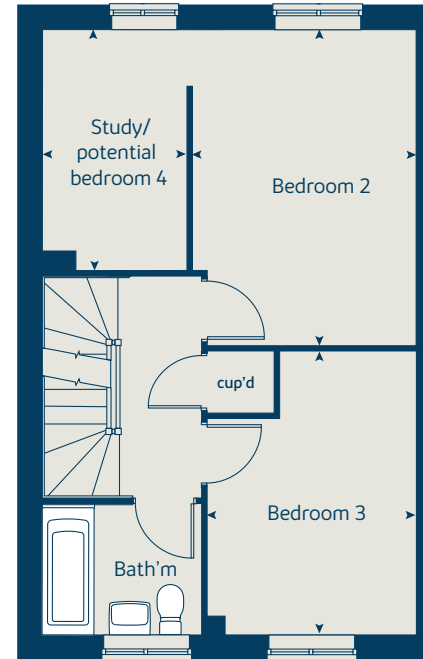
The floorplan has been produced for illustrative purposes only. Room sizes shown are between arrow points as indicated on plan. The dimensions have tolerances of + or -50mm and should not be used other than for general guidance. If specific dimensions are required, enquiries should be made to the sales consultant. The floor plans shown are not to scale. Measurements are based on the original drawings. Slight variations may occur during construction.

The illustrations shown are computer generated impressions of how the property may look and are indicative only. External details or finishes may vary on individual plots and homes may be built in either detached or attached styles depending on the development layout. Exact specifications, window styles and whether a property is left or right-handed may differ from plot to plot. Please speak to our sales consultant for specific plot details.

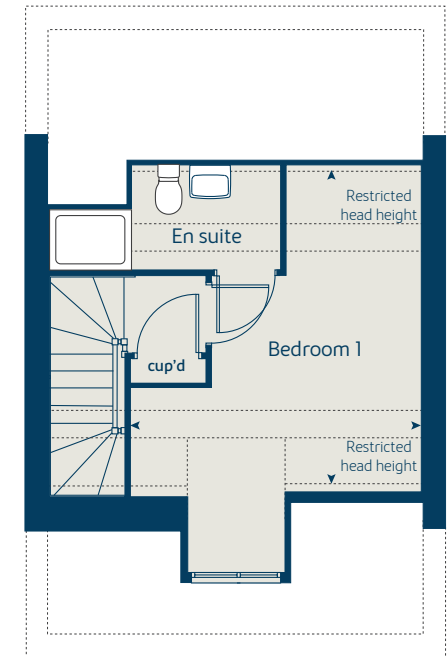
### Ground floor



### First floor



### Second floor



Floor area: 102 sq.m | 1,105 sq.ft



# The Mountwood

## 3 bedroom home

Ground floor	metres	feet / inches
Kitchen / dining area	5.59 x 2.70	18' 4" x 8' 10"
Sitting room	5.59 x 3.11	18' 4" x 10' 3"

First floor	metres	feet / inches
Bedroom 1	3.41 x 3.17	11' 2" x 10' 5"
Bedroom 2	3.13 x 2.74	10' 3" x 9' 0"
Bedroom 3	2.76 x 2.75	9' 1" x 9' 0"

h	hob	ws	washing machine space
ovn	oven	cup'd	cupboard
ffzs	fridge freezer space	< >	measuring points
ds	dishwasher space		

### The Mountwood | CMOU01 CBAND |

The floorplan has been produced for illustrative purposes only. Room sizes shown are between arrow points as indicated on plan. The dimensions have tolerances of + or -50mm and should not be used other than for general guidance. If specific dimensions are required, enquiries should be made to the sales consultant. The floor plans shown are not to scale. Measurements are based on the original drawings. Slight variations may occur during construction.

The illustrations shown are computer generated impressions of how the property may look and are indicative only. External details or finishes may vary on individual plots and homes may be built in either detached or attached styles depending on the development layout. Exact specifications, window styles and whether a property is left or right-handed may differ from plot to plot. Please speak to our sales consultant for specific plot details.

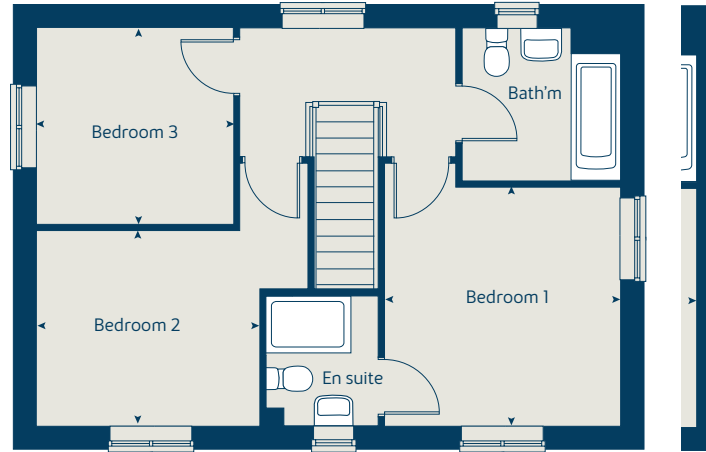
① Alternative layout applies to selected plots only. Please speak to our sales consultant for further details.

② Alternative layout applies to selected plots only. Please speak to our sales consultant for further details.

\* Door omitted to selected plots only. Please see sales consultant for further details.

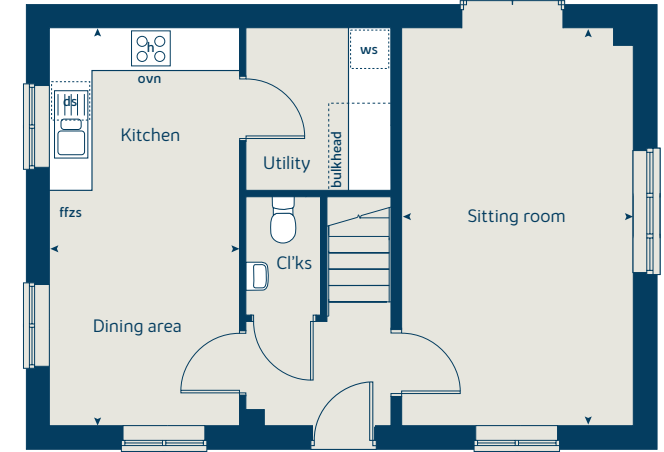
\*\* Window omitted to selected plots only. Please see sales consultant for further details.

### First floor

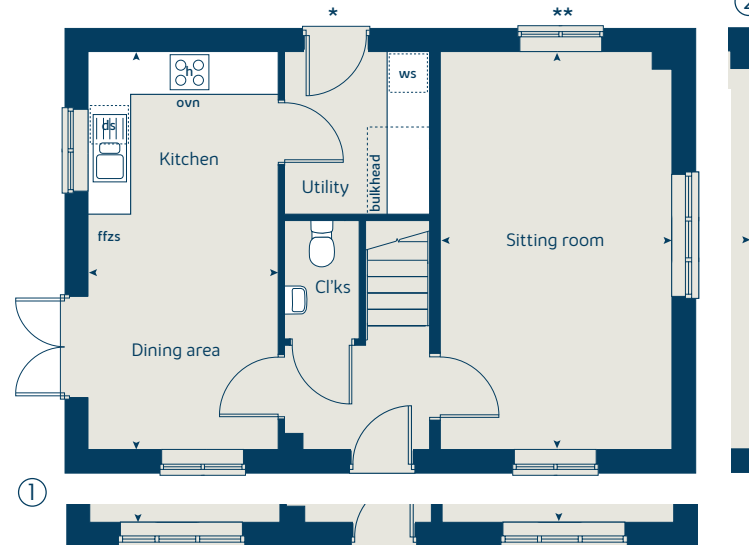


②

### Ground floor to selected plots



### Ground floor



②

①

①

Floor area: 90 sq.m | 970 sq.ft



# The Rowtree

3 bedroom home

Ground floor	metres	feet / inches
Kitchen	2.79 x 2.55	9' 1" x 8' 4"
Sitting / dining room	4.77 x 3.80	15' 8" x 12' 6"

First floor	metres	feet / inches
Bedroom 1	2.72 x 2.59	8' 11" x 8' 6"
Bedroom 2	2.84 x 2.54	9' 4" x 8' 4"
Bedroom 3	2.59 x 1.97	8' 6" x 6' 6"

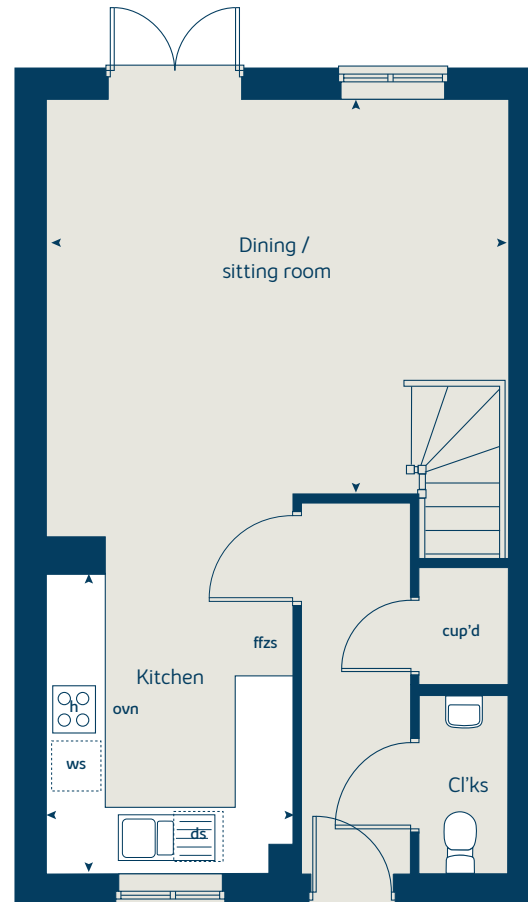
ovn	oven	ffzs	fridge freezer space
h	hob	cup'd	cupboard
ds	dishwasher space	< >	measuring points
ws	washing machine space		

## The Rowtree | WM03 CBAND |

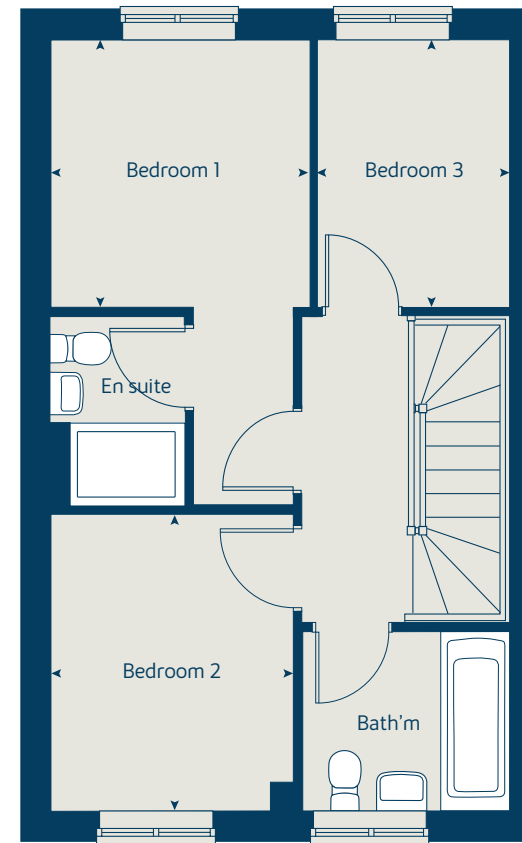
The floorplan has been produced for illustrative purposes only. Room sizes shown are between arrow points as indicated on plan. The dimensions have tolerances of + or -50mm and should not be used other than for general guidance. If specific dimensions are required, enquiries should be made to the sales consultant. The floor plans shown are not to scale. Measurements are based on the original drawings. Slight variations may occur during construction.

The illustrations shown are computer generated impressions of how the property may look and are indicative only. External details or finishes may vary on individual plots and homes may be built in either detached or attached styles depending on the development layout. Exact specifications, window styles and whether a property is left or right handed may differ from plot to plot. Please speak to our sales consultant for specific plot details.

Ground floor



First floor



Floor area: 71 sq.m | 764 sq.ft



# The Holly

2 bedroom home

Ground floor	metres	feet / inches
Kitchen / dining room	4.72 x 3.24	15' 6" x 10' 8"
Sitting room	3.72 x 3.66	12' 2" x 12' 0"

First floor	metres	feet / inches
Bedroom 1	3.59 x 3.20	11' 9" x 10' 6"
Bedroom 2	4.74 x 2.57	15' 6" x 8' 5"

ovn	oven	ldr	larder
h	hob	ffzs	fridge freezer space
ds	dishwasher space	cup'd	cupboard
ws	washing machine space	◀ ▶	measuring points

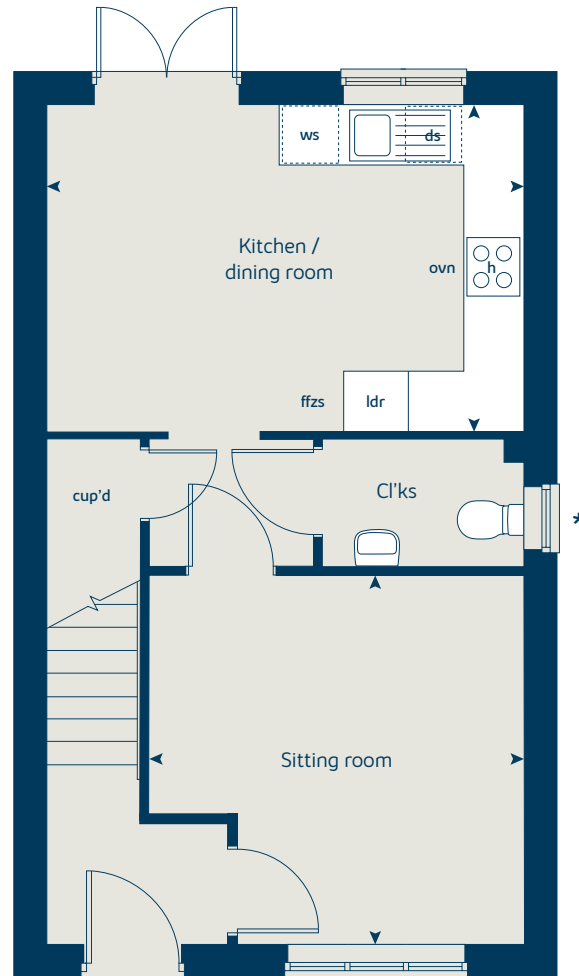
## The Holly | X204 01 CBAND |

The floorplan has been produced for illustrative purposes only. Room sizes shown are between arrow points as indicated on plan. The dimensions have tolerances of + or -50mm and should not be used other than for general guidance. If specific dimensions are required, enquiries should be made to the sales consultant. The floor plans shown are not to scale. Measurements are based on the original drawings. Slight variations may occur during construction.

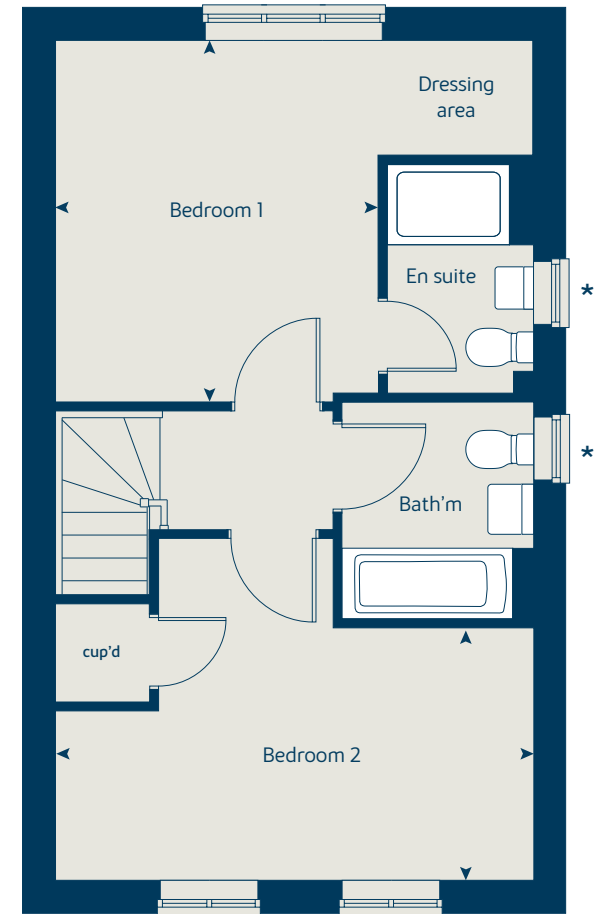
The illustrations shown are computer generated impressions of how the property may look and are indicative only. External details or finishes may vary on individual plots and homes may be built in either detached or attached styles depending on the development layout. Exact specifications, window styles and whether a property is left or right-handed may differ from plot to plot. Please speak to our sales consultant for specific plot details

\* Windows apply to selected plots only. Please see sales consultant for further details.

Ground floor



First floor



Floor area: 79 sq.m | 649 sq.ft



# The Ivy

## 2 bedroom bungalow

V1 - Plots 136 & 137	metres	feet / inches
Kitchen	4.64 x 2.33	15' 3" x 7' 8"
Dining / sitting area	5.64 x 3.13	18' 6" x 10' 3"
Bedroom 1	4.33 x 3.70	14' 2" x 12' 2"
Bedroom 2	4.00 x 2.51	13' 1" x 8' 3"

V2 - Plots 135 & 138	metres	feet / inches
Kitchen / sitting area	4.62 x 4.56	15' 2" x 15' 0"
Dining area	3.39 x 1.65	11' 2" x 5' 5"
Bedroom 1	4.17 x 2.97	13' 8" x 9' 9"
Bedroom 2	3.39 x 3.37	11' 2" x 11' 1"

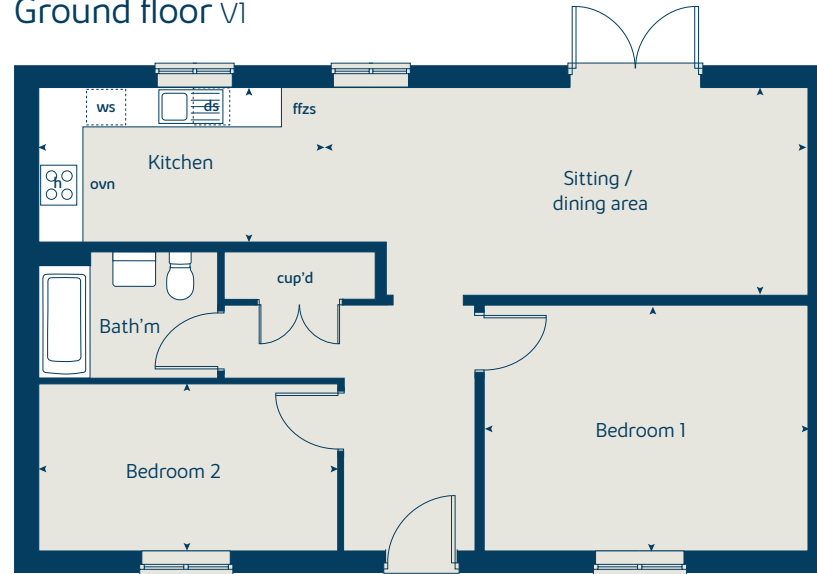
ovn	oven	ffzs	fridge freezer space
h	hob	cup'd	cupboard
ds	dishwasher space	◀ ▶	measuring points
ws	washing machine space		

### The Ivy | P2BB CBAND |

The floorplan has been produced for illustrative purposes only. Room sizes shown are between arrow points as indicated on plan. The dimensions have tolerances of + or -50mm and should not be used other than for general guidance. If specific dimensions are required, enquiries should be made to the sales consultant. The floor plans shown are not to scale. Measurements are based on the original drawings. Slight variations may occur during construction.

The illustrations shown are computer generated impressions of how the property may look and are indicative only. External details or finishes may vary on individual plots and homes may be built in either detached or attached styles depending on the development layout. Exact specifications, window styles and whether a property is left or right handed may differ from plot to plot. Please speak to our sales consultant for specific plot details.

### Ground floor V1



### Ground floor V2



V1 Floor area: 71 sq.m | 773 sq.ft  
V2 Floor area: 69 sq.m | 745 sq.ft



# The Harwood

2 bedroom home

Ground floor	metres	feet / inches
Kitchen	3.15 x 1.93	10' 4" x 6' 4"
Dining / sitting area	4.08 x 4.23	13' 5" x 13' 1"

First floor	metres	feet / inches
Bedroom 1	4.08 x 2.83	13' 5" x 9' 3"
Bedroom 2	4.08 x 2.40	13' 5" x 7' 10"

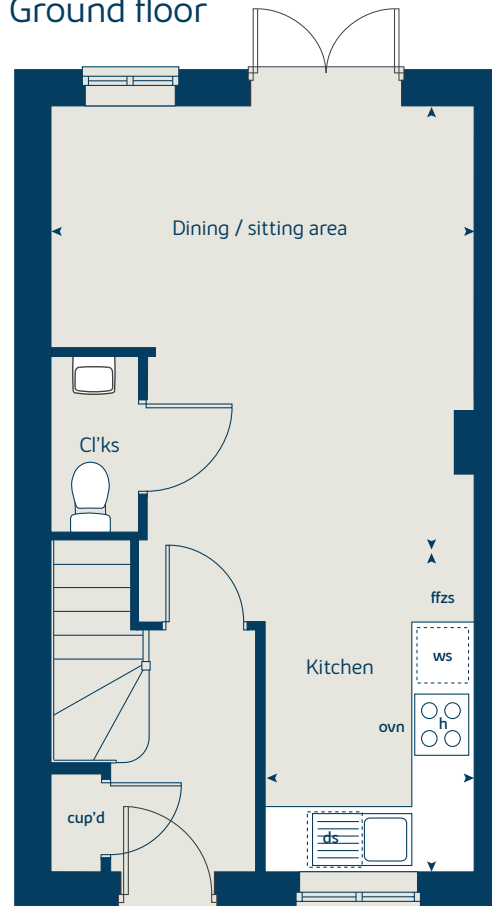
h	hob	ws	washing machine space
ovn	oven	cup'd	cupboard
ffzs	fridge freezer space	< >	measuring points
ds	dishwasher space		

## The Harwood | CHAR01 CBAND |

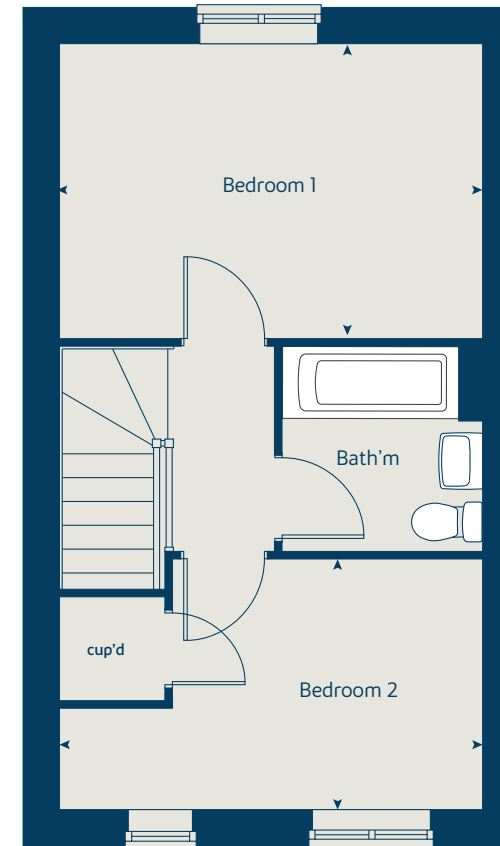
The floorplan has been produced for illustrative purposes only. Room sizes shown are between arrow points as indicated on plan. The dimensions have tolerances of + or -50mm and should not be used other than for general guidance. If specific dimensions are required, enquiries should be made to the sales consultant. The floor plans shown are not to scale. Measurements are based on the original drawings. Slight variations may occur during construction.

The illustrations shown are computer generated impressions of how the property may look and are indicative only. External details or finishes may vary on individual plots and homes may be built in either detached or attached styles depending on the development layout. Exact specifications, window styles and whether a property is left or right-handed may differ from plot to plot. Please speak to our sales consultant for specific plot details.

Ground floor



First floor



Floor area: 60 sq.m | 649 sq.ft





# Enhance and personalise your new home with upgrades and extras from our **Select** range

On top of the unique specification at Roman Fields, you can also use the Bovis Homes Select brochure to add even more finishing touches to your property and personalise your new home even more.

Customise your kitchen with stylish worktops and the latest modern appliances and personalise your bathrooms with stunning ceramics. Using the Select range there are various options allowing you to create your perfect property which is truly unique to you.

You can personalise every space in your home from kitchen cupboards and electrics to built in wardrobes and if you have a preference for flooring, you can select from our diverse range that includes luxurious carpets, ceramics and vinyl.

The availability of items is subject to the stage of build and can vary by development and housetype. Our sales consultants will be pleased to provide guidance.

Pick up a **Select** brochure from your sales consultant today to find an extensive list of items available. Such as:

- **Quartz kitchen worktops**
- **Premium appliance packages**
- **Flooring**
- **Built-in Symphony wardrobes**
- **Upgraded tiling in main bathroom and en suite**

# A home designed with you in mind

We are constantly reviewing our houses and ensuring they are everything that our customers want in a home. That's why we are proud to have developed and launched our new range of homes.

These homes have been created to embrace modern design and styling, whilst retaining the classic architectural traditions on which Bovis Homes has built its heritage and brand since 1885.

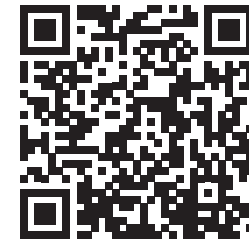
An integral part of the design process for our new range of homes was to ensure they have a real wow factor and eye-catching kerb appeal. From designing external elevations to create attractive street scenes through to maximising the flow and size of the rooms, the homes include a variety of features to capture the attention.

The size, positioning and number of windows in our new collection have created bright and airy homes, this mixed in with the higher ceilings gives your property a spacious feel.

The flow and layout of the new homes has been a key consideration to accommodate today's lifestyles, with a focus on future living. With the kitchen at the heart of the home, impressive family spaces have been included to create spacious, sociable living areas, while attention to master bedrooms and en suites has given the homes added desirability.



Scan me  
for directions



Roman Fields  
Warwick Road, Banbury  
OX16 1AR  
01295 500371





Every care has been taken in the preparation of this brochure. Bovis Homes operates a programme of continuous product development. Features, internal and external, may vary from time to time and may differ from those shown in this brochure. The development layout, landscaping and tenure of all dwellings may be subject to change throughout the course of the development.

Computer generated images, maps, photography, and imagery are intended for illustrative purposes. Features, designs, materials, and visual depictions must be treated as general guidance only. Please speak to a sales consultant for details of specific homes.

South Central Midlands region, Ingenuity House, 3rd Floor, Bickenhill Lane, Marston Green, Birmingham B37 7HQ. Telephone: 01675 437 000

Produced by the Vistry Design Studio. CBAND DS16484 / 05.26



# Roman Fields

## Specification

[bovishomes.co.uk](http://bovishomes.co.uk)

**Bovis  
Homes** 

# Unique specification

Part of the excitement of buying a new home is the thrill of being the first person to live in the property and having a brand new luxury kitchen and modern bathroom.

Our premium brand partners ensure that all of our fixtures and fittings comply with the latest Government building regulations

and only branded appliances are installed in your new home.

The availability of some items is subject to the stage of build, but our sales consultants will be happy to provide guidance every step of the way.

	2 bedroom				3 bedroom				4 bedroom				5 bedroom								
Kitchen	The Hawthorn	The Harwood	The Holly	The Ivy	The Cypress	The Spruce	The Jasmine	The Jasmine SE	The Mountwood	The Linwood	The Rowtree	The Attwood	The Chestnut	The Maple	The Mylinewood	The Knightwood	The Aspen	The Yew	The Lime	The Ashwood	The Pinewood
Choice of Standard fitted kitchen (doors and worktops)	■	■	■	■	■	■	■	■	■	■	■	■	■	■	■	■					
Choice of Premium fitted kitchen (doors and worktops)																	■	■	■	■	
Stainless steel sink and drainer (single bowl) with chrome mixer tap	■	■	■	■																	
Stainless steel sink and drainer (single and a half bowl) with chrome mixer tap					■	■	■	■	■	■	■	■	■	■	■	■	■	■	■	■	
Indesit hob with built-in single under oven, with stainless steel splashback and curved glass chimney hood	■	■	■	■	■	■	■	■	■	■	■	■									
Indesit hob with built-in double oven, with glass splashback and curved glass chimney hood									■	■	■	■									
Bosch hob with built-in double oven, with glass splashback and stainless steel pyramid chimney hood																	■	■	■	■	
Fridge / freezer space	■	■	■	■	■	■	■	■	■	■	■	■									
Integrated (Indesit) 50 / 50 fridge freezer									■	■	■	■					■	■	■	■	
Integrated (Indesit) dishwasher																	■	■	■	■	

	2 bedroom				3 bedroom				4 bedroom				5 bedroom								
Bathrooms and en suite(s)	The Hawthorn	The Harwood	The Holly	The Ivy	The Cypress	The Spruce	The Jasmine	The Jasmine SE	The Mountwood	The Linwood	The Rowtree	The Attwood	The Chestnut	The Maple	The Mylinewood	The Knightwood	The Aspen	The Yew	The Lime	The Ashwood	The Pinewood
Space for integrated dishwasher with plumbing and electrics	■	■	■	■	■	■	■	■	■	■	■	■	■	■	■	■	■	■	■	■	
Space for washing machine with plumbing and electrics in kitchen / utility	■	■	■	■	■	■	■	■	■	■	■	■	■	■	■	■	■	■	■	■	
Ideal Standard contemporary white Concept Air sanitaryware	■	■	■	■	■	■	■	■	■	■	■	■	■	■	■	■	■	■	■	■	
Ideal Standard close coupled WC to cloakroom	■	■	■		■	■	■	■	■	■	■	■	■	■	■	■	■	■	■	■	
Shower over the bath (full height tiling to length and side of bath)	■	■		■																	
Ideal Standard low profile shower tray with glass enclosure to bedroom 1 en suite				■	■	■	■	■	■	■	■	■	■	■	■	■	■	■	■	■	
Choice of standard Porcelanosa wall tiling (splashback, half-height over bath, and full-height to shower cubicle)*	■	■	■	■	■	■	■	■	■	■	■	■	■	■	■	■	■	■	■	■	
Chrome towel warmer in bathroom and en suite(s)													■	■	■	■	■	■	■	■	
Doors and Windows																					
Front door with multi-point security locking system and security chain	■	■	■	■	■	■	■	■	■	■	■	■	■	■	■	■	■	■	■	■	

- Fitted as standard - included in the property
- \* Subject to stage of construction

**2 bedroom**  
 The Hawthorn  
 The Harwood  
 The Holly  
 The Ivy  
**3 bedroom**  
 The Cypress  
 The Spruce  
 The Jasmine  
 The Jasmine SE  
 The Mountwood  
 The Linwood  
 The Rowtree  
 The Attwood  
**4 bedroom**  
 The Chestnut  
 The Maple  
 The Mylnewood  
 The Knightwood  
 The Aspen  
**5 bedroom**  
 The Yew  
 The Lime  
 The Ashwood  
 The Pinewood

PVCu double glazing to windows	■	■	■	■	■	■	■	■	■	■	■	■	■	■	■	■	■	■
Double glazed PVCu French doors (where applicable)	■	■	■	■	■	■	■	■	■	■	■	■	■	■	■	■	■	■
Double glazed bi-fold doors											■	■		■	■	■	■	■
Internal cottage style pre-primed doors with brass satin finish handles	■	■	■	■	■	■	■	■	■	■	■	■	■	■	■	■	■	■
Paving outside French / bi-fold door (where applicable)	■	■	■	■	■	■	■	■	■	■	■	■	■	■	■	■	■	■
<b>Heating</b>																		
Gas central heating with wall mounted combi-boiler, programme selector and room thermostat(s)	■	■	■	■	■	■	■	■	■	■	■	■	■	■				
Ideal system boiler and separate hot water cylinder, with Honeywell heating control and room thermostat(s)											■		■	■	■	■	■	■
<b>General - indoors</b>																		
White painted walls and smooth white ceilings	■	■	■	■	■	■	■	■	■	■	■	■	■	■	■	■	■	■
Combined usb / double sockets in kitchen and bedroom 1	■	■	■	■	■	■	■	■	■	■	■	■	■	■	■	■	■	■
Multi-media point in living room	■	■	■	■	■	■	■	■	■	■	■	■	■	■	■	■	■	■
TV point to bedroom 1 and family room (where applicable)	■	■	■	■	■	■	■	■	■	■	■	■	■	■	■	■	■	■
Mains wired smoke detectors with battery back-up	■	■	■	■	■	■	■	■	■	■	■	■	■	■	■	■	■	■
Battery powered Carbon Monoxide detector to be provided for each floor	■	■	■	■	■	■	■	■	■	■	■	■	■	■	■	■	■	■
<b>General - outdoors</b>																		
Power and lighting to 'on plot' garage (where applicable)					■	■	■	■	■	■	■	■	■	■	■	■	■	■
Enclosed fenced rear garden, and garden gate (where applicable)	■	■	■	■	■	■	■	■	■	■	■	■	■	■	■	■	■	■
Landscaped front gardens	■	■	■	■	■	■	■	■	■	■	■	■	■	■	■	■	■	■
Fitted external tap	■	■	■	■	■	■	■	■	■	■	■	■	■	■	■	■	■	■
External light fitted to front porch and wiring for external light to rear door	■	■	■	■	■	■	■	■	■	■	■	■	■	■	■	■	■	■
Appropriate power is supplied for future electric car charging installation	■	■	■	■	■	■	■	■	■	■	■	■	■	■	■	■	■	■
<b>Warranties</b>																		
NHBC Buildmark cover	■	■	■	■	■	■	■	■	■	■	■	■	■	■	■	■	■	■
First two years' customer service support from Bovis Homes	■	■	■	■	■	■	■	■	■	■	■	■	■	■	■	■	■	■



This specification indicates, by means of a dot (■), the items that are included within the home. If there is no dot in a column, the item is not included. Any item not expressly listed or indicated within this specification is excluded from the standard build. For information on the Select upgrade options available depending on build stage, please speak with a sales consultant.

The specification shown in this leaflet is correct at the time of going to press. Bovis Homes is continually reviewing and updating the specification on all housetypes and therefore reserves the right to change specification details. Photographs depict a typical Bovis Homes interior and may include optional upgrades. For full details regarding current specification and finishes, for the plots you are interested in, please refer to our sales consultant.



The specification shown is correct at the time of production. Bovis Homes is continually reviewing and updating the specification on all house / apartment types and therefore reserves the right to change specification details. Photographs depict typical Bovis Homes interiors and may include optional upgrades. For full details regarding the current specification and finishes, please speak to our sales consultant.

South Central Midlands region, Ingenuity House, 3rd Floor, Bickenhill Lane, Marston Green, Birmingham, B37 7HQ. Telephone: 01675 437 000

Produced by the Vistry Design Studio. CBAND DS16484 / 05.26