

Edwalton Fields Newsletter

Resident update - Autumn 2025



**Keeping
you
updated**



As work at Edwalton Fields continues, we wanted to keep you informed and provide you with an update on some aspects of the development.

Sales Arena

The Sales Arena, including one sales experience centre and the two show homes, will continue to have an on-site presence for the foreseeable future. Any changes, to this will be communicated accordingly.

Key Dates

- Work has commenced on the Edwalton Community Centre, with foundations laid and is due to be completed by March 2026.
- Roadsweeping takes place 3-4 times a week and is weather dependant.
- Currently in consultation with regard to Stage 3 surfacing of the roads and footpaths, with a view to a commencement by January 2026.

We would also like to thank you for your patience and will be doing everything we can to minimise disruption while the remaining building works continue.

Community contributions (\$106)

A commitment of £4.2m has been made to contribute the following:

- £680,000 to Highways Works
- £270,000 to Leisure Facility Contribution
- £991,000 to Primary Education
- £537,000 to Secondary Education
- £625,000 to Public Transport



bovishomes.co.uk

Contact

If you have any queries please contact us by emailing Customer Services at Customerservice.northmidlands@vistry.co.uk or call 0116 464 8913.



Awarded for 6 consecutive years

Edwalton Fields

Information for residents

Building homes, creating communities

At Bovis Homes we build award-winning new homes at developments across the UK. We take great pride in the wide range of house styles on offer, as well as the many ways that customers can enjoy living at each location.

At Edwalton Fields we are delivering 715 new homes in total of which 221 will be designated as Affordable Homes.

Your safety is our top priority

As you move through any part of the development, please remain aware of areas where construction is ongoing and ensure you follow all safety signage displayed on site. If you need to cross the designated 'build line', you must be accompanied by a member of staff and wear the appropriate personal protective equipment, including a hard hat, safety boots, and a high-visibility jacket, in accordance with health and safety regulations.

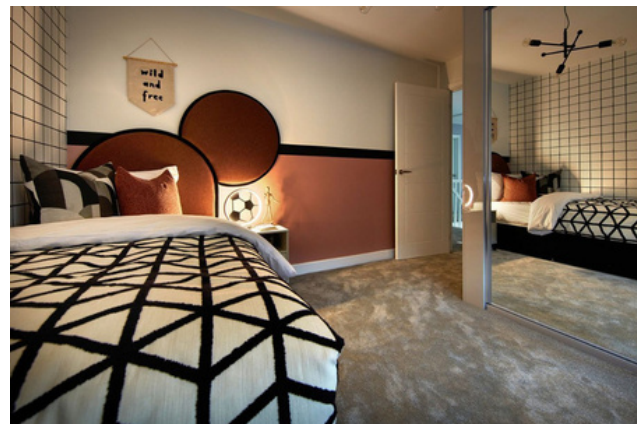
Protecting Wildlife

Bovis Homes is also committed to protecting local wildlife. We are proud to be working in partnership with the Bumblebee Conservation Trust and the British Hedgehog Preservation Society to support biodiversity and safeguard natural habitats within and around the development.

Outside spaces to enjoy.

At Bovis Homes we appreciate the importance of having outdoor space close by, for people of all ages to enjoy. At Edwalton Fields you will find dedicated POS areas, along with footpaths linking the development to the adjacent Country Park.

Please note that all dates and information provided are accurate to the best of our knowledge at the time of publication. However, timelines for completion or works may change due to factors such as weather conditions, and are therefore subject to change beyond our control.



Images show typical Bovis Homes house types – specifications and elevations may vary.

Managing Agent



Seeking to improve habitats for the benefit of the local community and the wildlife it supports, First Port is responsible for the management and maintenance of the public open space (POS) areas at Edwalton Fields. For details visit www.firstport.co.uk



INTRODUCE A FRIEND

and receive a

£2000

reward from us!

Bring this voucher to your nearest Bovis Homes sales office. We'll take care of a few details and get things moving.

Speak to our sales consultants for more information