



## KEEPING YOU UPDATED

We wanted to provide you with an update on the development and what you can expect from us over the coming months.

## OVERVIEW

The development will provide:

- 161 new homes including 49 affordable.
- New public open spaces.
- 2 Attenuation basins.
- Plots to include photovoltaic panels and EV charging.
- New cycle and pedestrian route.

## SITE ACTIVITY

- We have received planning consent for the redesign of Phase 1b, which comprises plots 5-33 and we are well underway with foundations and brickwork for these plots.
- Phase 1b progressing well with multiple completions already.
- We are gearing up to start remediation on phase 2.

## SALES AREA

The permanent sales area has opened. There are 3 show homes – the Aspen, Juniper and Rowan.

## TIMELINE

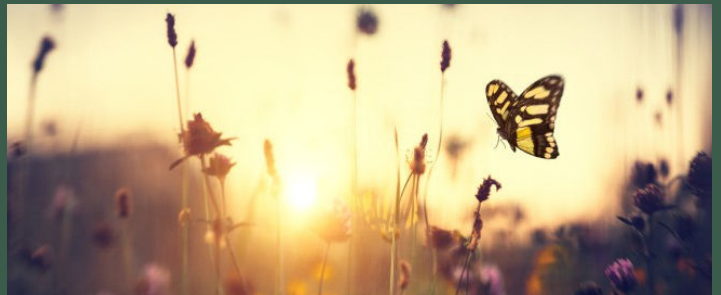
- The showhomes are now open including – The Aspen, The Rowan & The Juniper.
- The sales centre is also now open.
- Phase 1b has some plots completed, with some at foundation and brickwork/superstructure.
- The site compound has been established.
- Phase 2 ready to begin remediation over the next couple of months.

## MANAGING AGENT

- Trustgreen will be appointed as the managing agent on the development.
- They will be responsible for maintaining all public open space within the site boundary, attenuation ponds, the dry-stone wall, landscape management, grassland and borders, and resident liaison.

## ECOLOGY

- Newly planted trees and scrub will comprise native species.
- The site will provide hedgehog boxes located in quiet undisturbed areas with ground covering vegetation and hedgehog highways under boundary fences to allow movement of hedgehogs through the site.



## SERVICES

- The site is fed by a new substation which is due to go live mid January, until then the site is fed by a temporary supply.

# DEVELOPMENT LAYOUT PLAN

<b>2 bedroom homes</b>	<b>3 bedroom homes</b>	<b>4 bedroom homes</b>	<b>5 bedroom homes</b>
The Juneberry	The Beech	The Juniper	The Birch
	The Laurel	The Willow	
	The Rowan	The Alder	
<b>bcp</b> bin collection point	The Cypress	The Aspen	<b>Pre-sold homes</b>
<b>ss</b> substation	The Hazel		2 bedroom homes
<b>v</b> visitor space			3 bedroom homes
			4 bedroom homes



## HOW WILL THE DEVELOPMENT BENEFIT THE LOCAL COMMUNITY?

The development will also support the local community by contributing over £793,000 towards:

- S106 contributions.
- Biodiversity Net Gain Contributions.
- Highways Works.
- Sustainable transport.

Please be aware that the dates and information provided are correct at time of print and are dependent on a number of factors, including weather, so are subject to change.

Thank you for your patience while the construction work is taking place. We try to keep disruption to a minimum but appreciate it can be noisy and dirty at times so do contact us if you have any questions, or if you'd like to provide any feedback, by emailing:

[sunnybower.meadow@bovishomes.co.uk](mailto:sunnybower.meadow@bovishomes.co.uk)