

Sunnybower Meadows

Blackburn





Sunnybower Meadow

Blackburn

A taste of local life

bovishomes.co.uk

**Bovis
Homes** 



Welcome to Sunnybower Meadow

Bovis Homes are proud to showcase our brand new development at Sunnybower Meadow, perched on top of one of the highest hills in Blackburn and right at the edge of the rolling hills with views of the Ribble Valley.



Sunnybower Meadow will comprise a mix of new properties from our exclusive and wide range of 2, 3, 4 and 5 bedroom homes. So, whether you are climbing the first rung of the property ladder, in need of more space with a growing family or downsizing from the family home – there is a home for you in this exciting new community.

Getting around

Sunnybower Meadow is a great location for getting around. The M65 J6 is just under 2 miles, which can take you to Preston in about 30 minutes, or Manchester in under an hour.

For rail journeys, Blackburn railway station is only a 10-minute drive and offers an hourly service to Preston in 30 minutes. There are also half hourly direct services to Manchester which take just under an hour.

Taking time out

A large cathedral city with a history steeped in the textile trade of the Industrial Revolution, Blackburn is a vibrant place to live. There is a lively restaurant and bar scene in the town centre which provides a great night out with plenty of choice from West Indian to modern British cuisine – as well as fashionable cocktail bars or a micro pub which brews its

own beer. The town boasts an Olympic size and grade ice rink which makes for a wonderfully fun adventure sliding around. Alternatively get a ticket to watch the pros at work – top ice hockey team Blackburn Hawks are based at the rink and games are a raucous and noisy affair!

The unique geographical location of Sunnybower Meadow means you can walk in rolling hills right from your doorstep. By setting out on one of the many footpaths you will be presented with a stunning view of famous Pendle Hill in one direction and the urban sprawl of Blackburn below you in the other. These paths are superb for a brisk family walk with a picnic or just a short stroll to stretch your legs.

The perfect position

Education

A choice of several local primary and secondary schools with either 'Good' or 'Outstanding' OFSTED ratings can be found within 2.5 miles of Sunnybower Meadow all of which cater for children from 4 to secondary age.

For further education, the award-winning Blackburn College, rated 'Good', is located in the town centre just 2.2 miles away.

St Gabriels Primary School
2 miles | 7 min drive



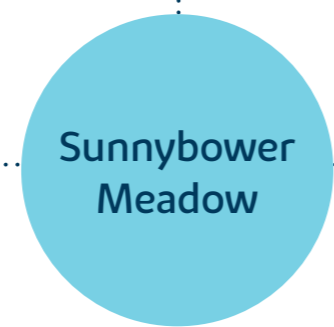
Pleckgate High School
2.2 miles | 7 min drive



Blackburn College
2.5 miles | 10 min drive



Blackburn Town Centre
2.2 miles | 10 min drive



Pendle Hill
15.2 miles | 32 min drive



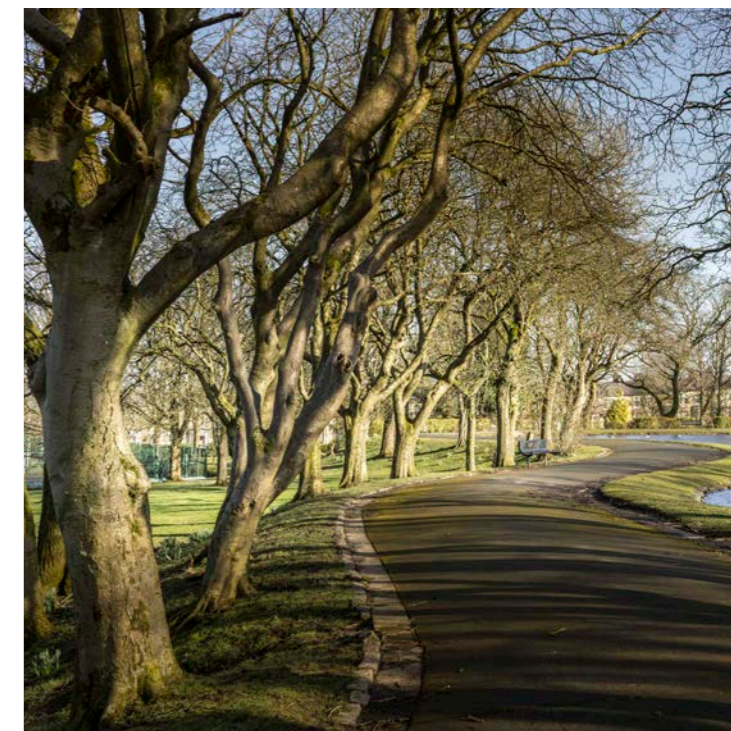
Blackburn Train Station
2.3 miles | 11 min drive



Planet Ice Rink
3.4 miles | 15 min drive



M65 Motorway
1.7 miles | 7 min drive



Distances and timings are approximate and for reference only. Calculated using maps.google.co.uk

A community to be proud of

We know that the area surrounding your new home is just as important as the features within your new property. As well as bringing a range of new homes to the area, we also make a commitment. These commitments are chosen based on the needs of our new community and we work with the local council to deliver them. We are proud to announce that we will invest over £800,000 in local schemes to support the community surrounding your new home in Blackburn.

These schemes include:

Creating biodiverse habitats



Highway works



“Bovis homes will invest more than **£800,000** towards community schemes”

Sustainable transport improvement



Personalise your new home with upgrades and extras from our **Select** range, where the choice is yours

Customise your kitchen with stylish worktops and the latest modern appliances and personalise your bathrooms with stunning ceramics.

Using the Select range there are various options allowing you to create your perfect property which is truly unique to you.

You can personalise every space in your home from kitchen cupboards and electrics to built in wardrobes and if you have a preference for flooring, you can select from our diverse range that includes luxurious carpets, stylish Amtico, ceramics and vinyl.

Pick up a **Select** brochure from a sales consultant today to find an extensive list of items available, including:

- Quartz or Granite worktops
- A selection of kitchen packages including integrated appliances
- Flooring
- Built-in wardrobes
- Upgraded tiling and many more!

The choice is yours - with **Select**.

Purchase assistance schemes

Wherever you are in the home-buying market - looking to step up the property ladder or a downsizer - we have a variety of great purchase assistance schemes!

Smooth Move

Smooth Move is our scheme for all existing property owners to save time and money. We deal with the estate agents to sell your home and even pay the estate agents' fees!

Home Exchange

With Home Exchange you can have peace of mind knowing that we are your guaranteed buyer, meaning you'll have a chain-free move without the estate agents' fees.

Recommend a Friend

Receive £500 as a thank you when you introduce a friend or relative who then completes the purchase of a new Bovis home!



A home designed with you in mind

We are constantly reviewing our houses and ensuring they are everything that our customers want in a home. We are proud to have developed and launched a new range of homes.

These homes have been created to embrace modern design and styling, whilst retaining classic architectural traditions.

An integral part of the design process for our new range of homes was to ensure they have a real wow factor and eye-catching kerb appeal. From designing external elevations to create attractive street scenes through to maximising the flow and size of the rooms, the homes include a variety of features to capture attention.

The size, positioning and number of windows in our new housing collection have created bright and airy homes, this mixed in with the higher ceilings (not applicable to all homes) gives your property a spacious feel.

The flow and layout of the new homes has been a key consideration to accommodate today's lifestyles, with a focus on future living.

With the kitchen at the heart of the home, impressive family spaces have been included within them to create sociable living areas, while attention on bedroom 1 and en suites has given the homes added desirability.

Our 4 bedroom properties include popular bi-fold doors helping to bring the outside in and enhance the gardens as an extended living area.



Firm foundations means peace of mind for you

When buying a new home, you want to be sure you can trust your builder. Choosing a Bovis Home gives you the peace of mind that comes from choosing a company that has been building some of the best homes in the UK for more than a hundred years.

We pride ourselves on being one of the country's leading housebuilders and have established an enviable reputation for the quality of our build and design, specification and customer service.

Each Bovis Home is carefully planned both to meet your needs and to integrate into the existing location.

We will often use local materials and reflect regional features. Trees are retained wherever possible and new landscaping added, along with footpaths and cycleways in many cases to help create a wonderful place to live.

Scan me
for directions



Sunnybower Meadow

Whalley Old Road, Blackburn,
Lancashire BB1 4AA

01254 641 090

what3words ///frame.camps.extend

From M65

- Head west on M65 towards exit 6
- At junction 6, take the A678 exit to Blackburn N Cent
- At the roundabout, take the 4th exit onto Whitebirk Drive / A6119
- Continue to follow A6119
- Turn right onto Whalley Old Road
- Turn right and you will see our Sunnybower Meadows development

Cover photograph of Wayoh Reservoir. Not view from the development. The streetscene has been produced for illustrative purposes only. Please check the details of the homes you are interested in with our sales consultant.

Vistry Merseyside & Cheshire West

301 Bridgewater Place, Birchwood Park, Birchwood, Warrington WA3 6XF. Telephone: 01925 248 900

Produced by Vistry Group Design Studio.

When you have finished with this brochure please recycle it.

DS10770 / 01.25

**Bovis
Homes** 



Sunnybower Meadows

Blackburn

Development plan

bovishomes.co.uk

**Bovis
Homes** 

Sunnybower Meadows


Blackburn

2 bedroom homes

 The Juneberry

3 bedroom homes

 The Beech

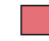
 The Laurel


 The Rowan

 The Cypress

 The Hazel

4 bedroom homes

 The Juniper

 The Willow

 The Alder

 The Aspen

5 bedroom homes

 The Birch

Pre-sold homes

 2 bedroom homes

 3 bedroom homes

 4 bedroom homes

bcp bin collection point
 ss substation
 v visitor space

Show homes and sales centre



This plan has been produced for home identification purposes only and is not to scale. The development layout, landscaping and tenure of all dwellings may be subject to change throughout the course of the development. Finishes and materials may vary from those shown on the plan. Please check the details of your chosen plot and house type with the sales consultant. Development layout plan correct at time of production.

Vistry Merseyside & Cheshire West region

302 Bridgewater Place, Birchwood Park, Birchwood, Warrington WA3 6XG. Telephone: 01925 248 900

Produced by the Vistry Group Design Studio.

When you have finished with this leaflet please recycle it.

DS10770 / 06.24





The Juneberry

2 bedroom home

bovishomes.co.uk

**Bovis
Homes** 

The Juneberry

2 bedroom home

Ground floor	metres	feet / inches
Kitchen	3.56 x 3.24	11' 8" x 10' 8"
Sitting / dining room	5.20 x 3.56	17' 1" x 11' 8"
Bedroom 1	4.25 x 3.12	13' 11" x 10' 3"
Bedroom 2	3.07 x 2.54	13' 4" x 8' 4"

ovn	oven	ffzs	fridge freezer space
h	hob	ldr	larder
ds	dishwasher space	cup'd	cupboard
ws	washing machine space	◀ ▶	measuring points

The Juneberry | X229 04 Sunnybower Meadows |

The floorplan has been produced for illustrative purposes only. Room sizes shown are between arrow points as indicated on plan. The dimensions have tolerances of + or -50mm and should not be used other than for general guidance. If specific dimensions are required, enquiries should be made to the sales consultant. The floor plans shown are not to scale. Measurements are based on the original drawings. Slight variations may occur during construction.

The illustrations shown are computer generated impressions of how the property may look and are indicative only. External details or finishes may vary on individual plots and homes may be built in either detached or attached styles depending on the development layout. Exact specifications, window styles and whether a property is left or righthanded may differ from plot to plot. Please speak to our sales consultant for specific plot details.

* Windows apply to corner plots only. Please see sales consultant for further details.

Produced by Vistry Group Design Studio.

When you have finished with this leaflet please recycle it.

DS12893 / 02.25





The Hazel

3 bedroom home

bovishomes.co.uk

**Bovis
Homes** 

The Hazel

3 bedroom home

Ground floor	metres	feet / inches
Kitchen / dining room	5.19 x 2.99	17' 0" x 9' 10"
Sitting room	4.17 x 3.66	13' 8" x 12' 0"

First floor

Bedroom 1	3.54 x 3.29	11' 7" x 10' 9"
Bedroom 2	2.95 x 2.72	9' 8" x 8' 11"
Bedroom 3	3.48 x 2.15	11' 5" x 7' 1"

ovn	oven	ffzs	fridge freezer space
h	hob	cup'd	cupboard
ds	dishwasher space	◀ ▶	measuring points
ws	washing machine space		

The Hazel | X305 04 Sunnybower Meadows |

The floorplan has been produced for illustrative purposes only. Room sizes shown are between arrow points as indicated on plan. The dimensions have tolerances of + or -50mm and should not be used other than for general guidance. If specific dimensions are required, enquiries should be made to the sales consultant. The floor plans are not to scale. Measurements are based on the original drawings. Slight variations may occur during construction.

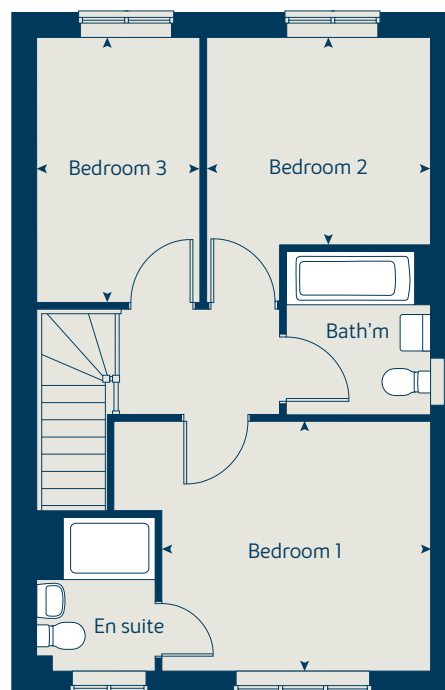
The illustrations shown are computer generated impressions of how the property may look and are indicative only. External details or finishes may vary on individual plots and homes may be built in either detached or attached styles depending on the development layout. Exact specifications, window styles and whether a property is left or right handed may differ from plot to plot. Please speak to our sales consultant for specific plot details.

Produced by Vistry Group Design Studio.

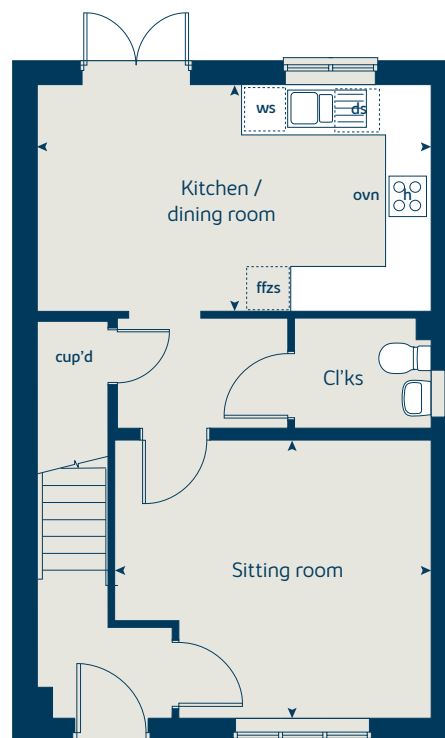
When you have finished with this leaflet please recycle it.

DS12893 / 02.25

First floor



Ground floor





The Rowan

3 bedroom home

bovishomes.co.uk

**Bovis
Homes** 

The Rowan

3 bedroom home

Ground floor	metres	feet / inches
Kitchen	2.85 x 2.46	9' 4" x 8' 1"
Sitting / dining room	5.23 x 5.19	17' 2" x 17' 0"

First floor

Bedroom 1	3.68 x 3.57	12' 1" x 11' 9"
Bedroom 2	2.97 x 2.44	9' 9" x 8' 0"
Bedroom 3	3.54 x 2.13	11' 7" x 7' 0"

ovn	oven	ffzs	fridge freezer space
h	hob	cup'd	cupboard
ds	dishwasher space	◀ ▶	measuring points
ws	washing machine space		

The Rowan | X306 02 Sunnybower Meadows |

The floorplan has been produced for illustrative purposes only. Room sizes shown are between arrow points as indicated on plan. The dimensions have tolerances of + or -50mm and should not be used other than for general guidance. If specific dimensions are required, enquiries should be made to the sales consultant. The floor plans shown are not to scale. Measurements are based on the original drawings. Slight variations may occur during construction.

The illustrations shown are computer generated impressions of how the property may look and are indicative only. External details or finishes may vary on individual plots and homes may be built in either detached or attached styles depending on the development layout. Exact specifications, window styles and whether a property is left or right handed may differ from plot to plot. Please speak to our sales consultant for specific plot details.

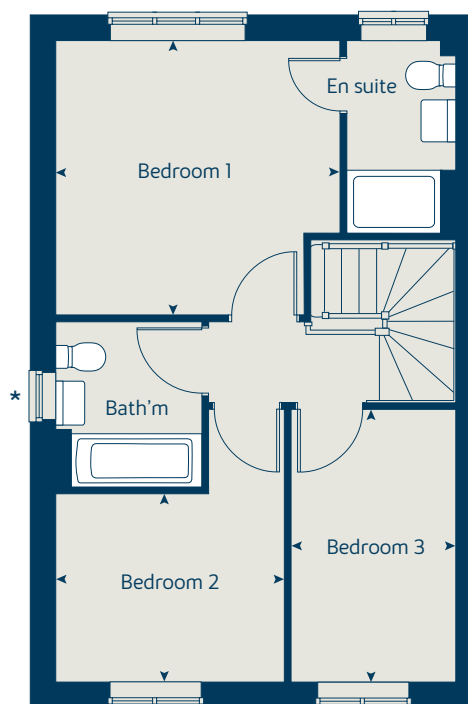
* Windows apply to selected plots only.
Please see sales consultant for further details.

Produced by Vistry Group Design Studio.

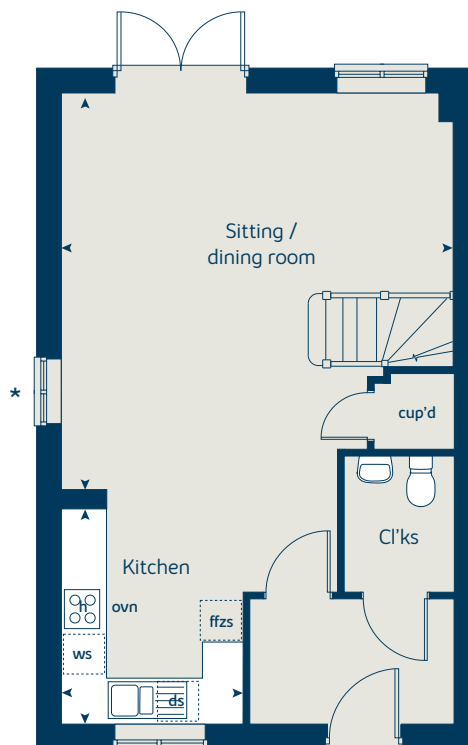
When you have finished with this leaflet please recycle it.

DS12893 / 02.25

First floor



Ground floor





The Cypress

3 bedroom home

bovishomes.co.uk

**Bovis
Homes** 

The Cypress

3 bedroom home

Ground floor	metres	feet / inches
Kitchen / dining area	5.52 x 3.13	18' 2" x 10' 3"
Sitting room	4.40 x 3.40	14' 6" x 11' 2"

First floor

Bedroom 1	4.10 x 3.28	13' 6" x 10' 9"
Bedroom 2	3.28 x 2.83	10' 9" x 9' 3"
Bedroom 3	3.52 x 2.16	11' 7" x 7' 1"

ovn	oven	ffzs	fridge freezer space
h	hob	cup'd	cupboard
ds	dishwasher space	◀ ▶	measuring points
ws	washing machine space		

The Cypress | X308 (IF) 02 Sunnybower Meadows |

The floorplan has been produced for illustrative purposes only. Room sizes shown are between arrow points as indicated on plan. The dimensions have tolerances of + or -50mm and should not be used other than for general guidance. If specific dimensions are required, enquiries should be made to the sales consultant. The floor plans shown are not to scale. Measurements are based on the original drawings. Slight variations may occur during construction.

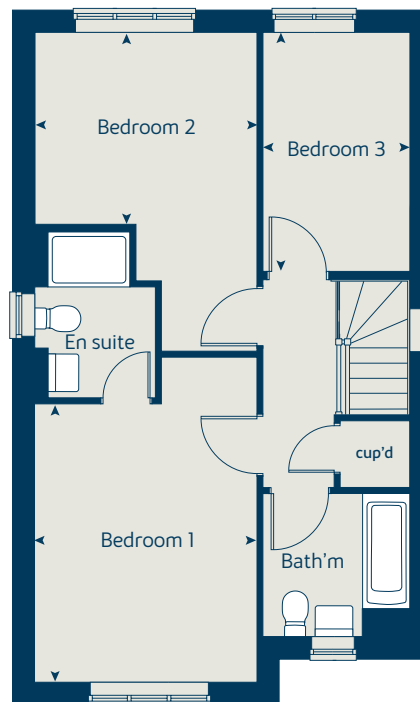
The illustrations shown are computer generated impressions of how the property may look and are indicative only. External details or finishes may vary on individual plots and homes may be built in either detached or attached styles depending on the development layout. Exact specifications, window styles and whether a property is left or right handed may differ from plot to plot. Please speak to our sales consultant for specific plot details.

Produced by Vistry Group Design Studio.

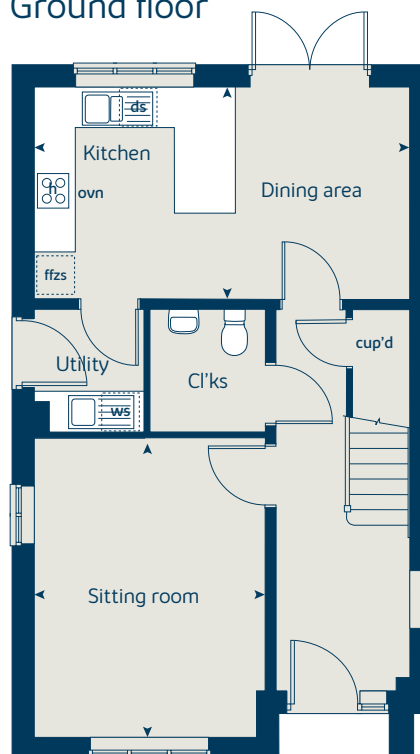
When you have finished with this leaflet please recycle it.

DS12893 / 02.25

First floor



Ground floor





The Laurel

3 bedroom home

bovishomes.co.uk

**Bovis
Homes** 

The Laurel

3 bedroom home

Ground floor	metres	feet / inches
Sitting room	3.32 x 5.53	10' 11" x 18' 2"
Kitchen	3.68 x 2.38	12' 1" x 7' 10"
Dining	2.85 x 3.15	9' 4" x 10' 4"

First floor

Bedroom 1	3.39 x 3.25	11' 1" x 10' 8"
Bedroom 2	3.56 x 2.69	11' 8" x 8' 10"
Bedroom 3	2.81 x 2.75	9' 2" x 9' 0"

ovn	oven	ffzs	fridge freezer space
h	hob	cup'd	cupboard
ds	dishwasher space	◀ ▶	measuring points
ws	washing machine space		

The Laurel | Sunnybower Meadows |

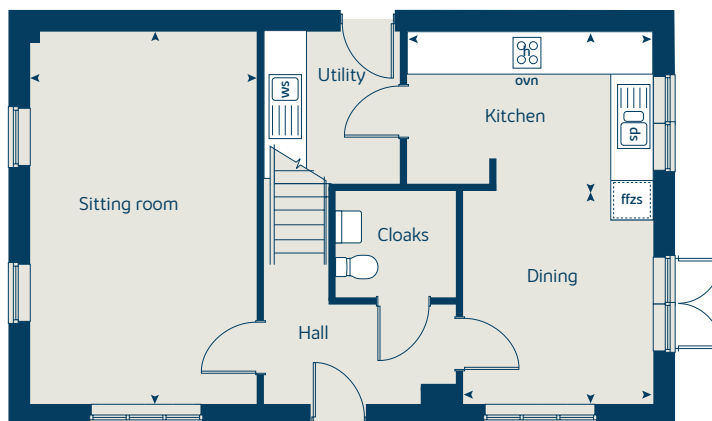
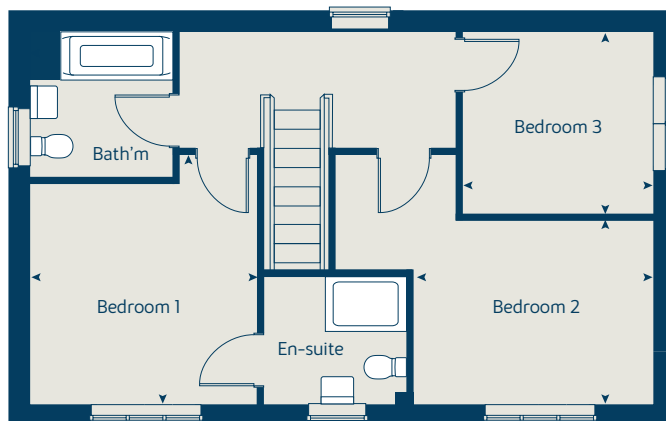
The floorplan has been produced for illustrative purposes only. Room sizes shown are between arrow points as indicated on plan. The dimensions have tolerances of + or -50mm and should not be used other than for general guidance. If specific dimensions are required, enquiries should be made to the sales consultant. The floor plans shown are not to scale. Measurements are based on the original drawings. Slight variations may occur during construction.

The illustrations shown are computer generated impressions of how the property may look and are indicative only. External details or finishes may vary on individual plots and homes may be built in either detached or attached styles depending on the development layout. Exact specifications, window styles and whether a property is left or righthanded may differ from plot to plot. Please speak to our sales consultant for specific plot details.

Produced by Vistry Group Design Studio.

When you have finished with this leaflet please recycle it.

DS12893 / 02.25





The Beech

3 bedroom home

bovishomes.co.uk

**Bovis
Homes** 

The Beech

3 bedroom home

Ground floor	metres	feet / inches
Kitchen / dining room	4.74 x 2.91	15' 7" x 9' 7"
Sitting room	4.00 x 3.72	13' 1" x 12' 2"

First floor	metres	feet / inches
Bedroom 2	4.74 x 3.46	15' 7" x 11' 4"
Bedroom 3	3.39 x 2.49	11' 2" x 8' 2"

Second floor	metres	feet / inches
Bedroom 1	3.62 x 3.02	11' 11" x 9' 11"

ovn	oven	ffzs	fridge freezer space
h	hob	cup'd	cupboard
ds	dishwasher space	◀ ▶	measuring points
ws	washing machine space		

The Beech | X309 02 Sunnybower Meadows |

The floorplan has been produced for illustrative purposes only. Room sizes shown are between arrow points as indicated on plan. The dimensions have tolerances of + or -50mm and should not be used other than for general guidance. If specific dimensions are required, enquiries should be made to the sales consultant. The floor plans shown are not to scale. Measurements are based on the original drawings. Slight variations may occur during construction.

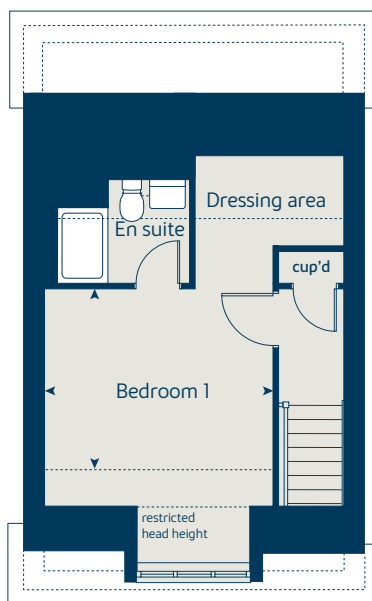
The illustrations shown are computer generated impressions of how the property may look and are indicative only. External details or finishes may vary on individual plots and homes may be built in either detached or attached styles depending on the development layout. Exact specifications, window styles and whether a property is left or right handed may differ from plot to plot. Please speak to our sales consultant for specific plot details.

Produced by Vistry Group Design Studio.

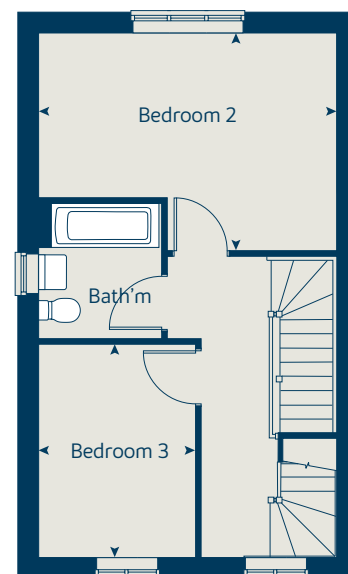
When you have finished with this leaflet please recycle it.

DS12893 / 02.25

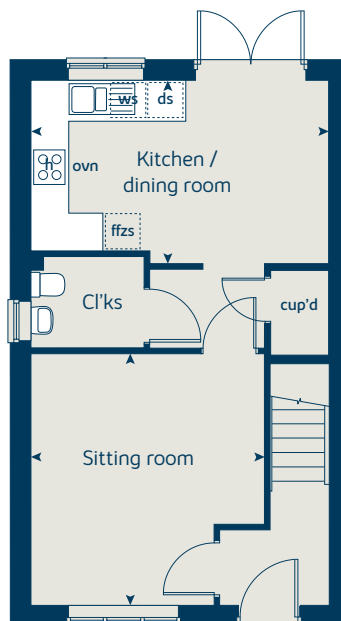
Second floor



First floor



Ground floor





The Willow

4 bedroom home

bovishomes.co.uk

**Bovis
Homes** 

The Willow

4 bedroom home

Ground floor	metres	feet / inches
Kitchen / dining room	5.97 x 3.77	19' 7" x 12' 4"
Sitting room	4.42 x 3.23	14' 6" x 10' 7"

First floor

Bedroom 2	4.89 x 3.32	14' 6" x 10' 11"
Bedroom 3	4.05 x 3.33	13' 3" x 10' 11"
Bedroom 4	2.93 x 2.56	9' 7" x 8' 5"

Second floor

Bedroom 1	4.34 x 3.50	14' 3" x 11' 6"
-----------	-------------	-----------------

ovn	oven	ffzs	fridge freezer space
h	hob	cup'd	cupboard
ds	dishwasher space	◀ ▶	measuring points
ws	washing machine space		

The Willow | X411 02 Sunnybower Meadows |

The floorplan has been produced for illustrative purposes only. Room sizes shown are between arrow points as indicated on plan. The dimensions have tolerances of + or -50mm and should not be used other than for general guidance. If specific dimensions are required, enquiries should be made to the sales consultant. The floor plans shown are not to scale. Measurements are based on the original drawings. Slight variations may occur during construction.

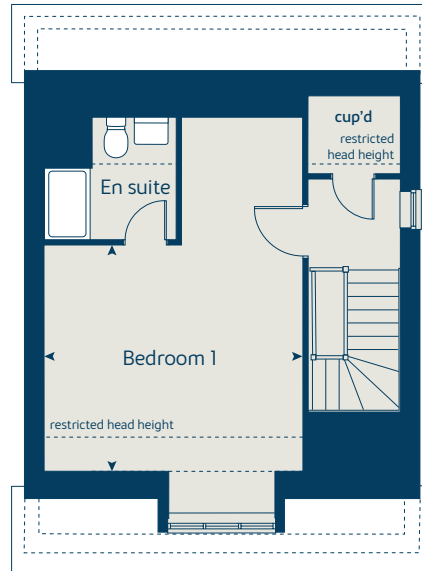
The illustrations shown are computer generated impressions of how the property may look and are indicative only. External details or finishes may vary on individual plots and homes may be built in either detached or attached styles depending on the development layout. Exact specifications, window styles and whether a property is left or right handed may differ from plot to plot. Please speak to our sales consultant for specific plot details.

Produced by Vistry Group Design Studio.

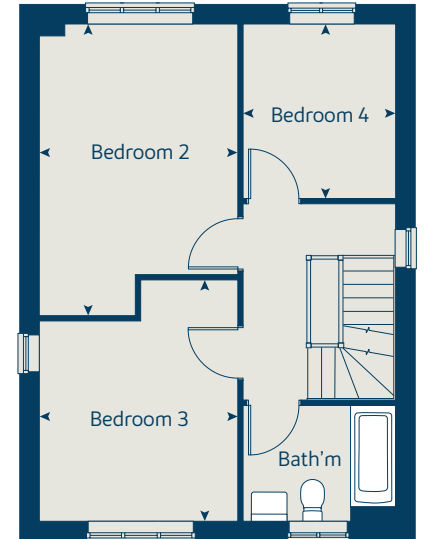
When you have finished with this leaflet please recycle it.

DS12893 / 02.25

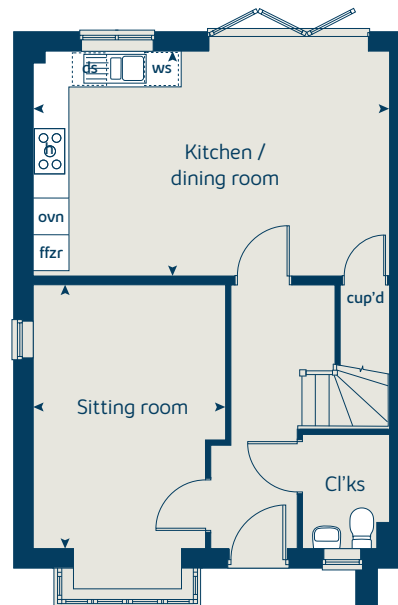
Second floor



First floor



Ground floor





The Juniper

4 bedroom home

bovishomes.co.uk

**Bovis
Homes** 

The Juniper

4 bedroom home

Ground floor	metres	feet / inches
Kitchen / dining / family area	7.21 x 3.52	23' 8" x 11' 7"
Sitting room	4.55 x 3.04	14' 11" x 10' 0"
Study	2.34 x 1.85	7' 8" x 6' 1"

First floor	metres	feet / inches
Bedroom 1	3.54 x 3.47	11' 7" x 11' 5"
Bedroom 2	3.65 x 2.84	12' 0" x 9' 4"
Bedroom 3	3.52 x 2.38	11' 7" x 7' 10"
Bedroom 4	3.61 x 2.38	11' 10" x 7' 10"

ovn	oven	ffzr	fridge freezer
h	hob	ldr	larder
ds	dishwasher space	cup'd	cupboard
ws	washing machine space	◀ ▶	measuring points

The Juniper | X412 02 Sunnybower Meadows |

The floorplan has been produced for illustrative purposes only. Room sizes shown are between arrow points as indicated on plan. The dimensions have tolerances of + or -50mm and should not be used other than for general guidance. If specific dimensions are required, enquiries should be made to the sales consultant. The floor plans shown are not to scale. Measurements are based on the original drawings. Slight variations may occur during construction.

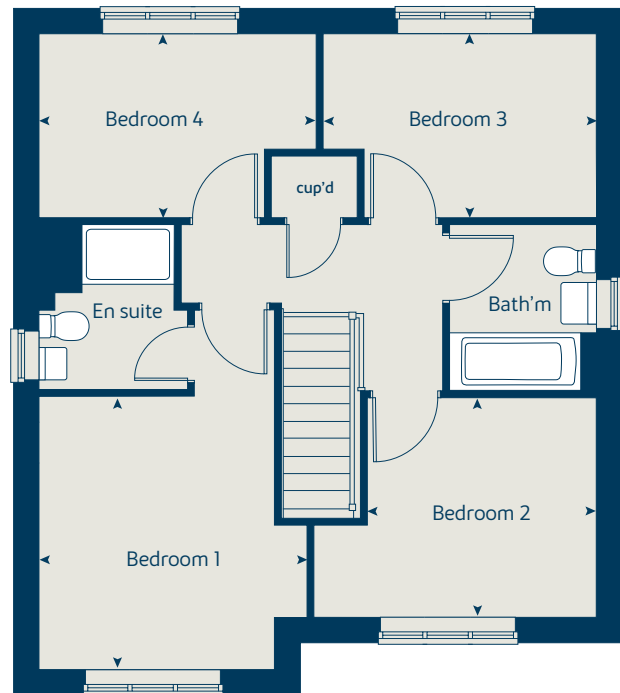
The illustrations shown are computer generated impressions of how the property may look and are indicative only. External details or finishes may vary on individual plots and homes may be built in either detached or attached styles depending on the development layout. Exact specifications, window styles and whether a property is left or right handed may differ from plot to plot. Please speak to our sales consultant for specific plot details.

Produced by Vistry Group Design Studio.

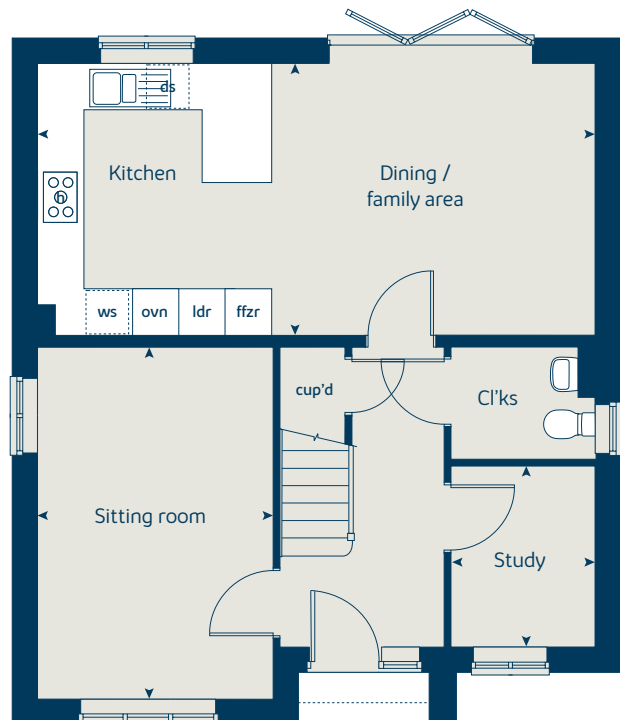
When you have finished with this leaflet please recycle it.

DS12893 / 02.25

First floor



Ground floor





The Aspen

4 bedroom home

bovishomes.co.uk

**Bovis
Homes** 

The Aspen

4 bedroom home

Ground floor	metres	feet / inches
Kitchen / dining area	7.77 x 3.37	25' 6" x 11' 1"
Sitting room	5.04 x 3.39	16' 6" x 11' 1"
Study	2.02 x 2.01	6' 8" x 6' 7"

First floor	metres	feet / inches
Bedroom 1	4.52 x 3.81	14' 10" x 12' 6"
Bedroom 2	3.87 x 3.11	12' 8" x 10' 2"
Bedroom 3	4.07 x 2.42	13' 4" x 7' 11"
Bedroom 4	3.61 x 2.45	11' 10" x 8' 1"

ovn	oven	ffzr	fridge freezer
h	hob	ldr	larder
ds	dishwasher space	cup'd	cupboard
ws	washing machine space	◀ ▶	measuring points

The Aspen | X414 (IF) 02 Sunnybower Meadows |

The floorplan has been produced for illustrative purposes only. Room sizes shown are between arrow points as indicated on plan. The dimensions have tolerances of + or -50mm and should not be used other than for general guidance. If specific dimensions are required, enquiries should be made to the sales consultant. The floor plans shown are not to scale. Measurements are based on the original drawings. Slight variations may occur during construction.

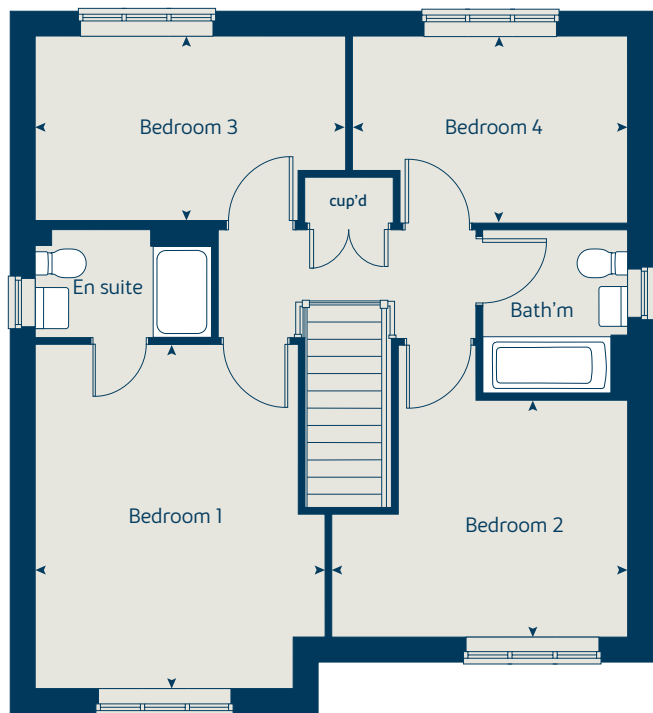
The illustrations shown are computer generated impressions of how the property may look and are indicative only. External details or finishes may vary on individual plots and homes may be built in either detached or attached styles depending on the development layout. Exact specifications, window styles and whether a property is left or right handed may differ from plot to plot. Please speak to our sales consultant for specific plot details.

Produced by Vistry Group Design Studio.

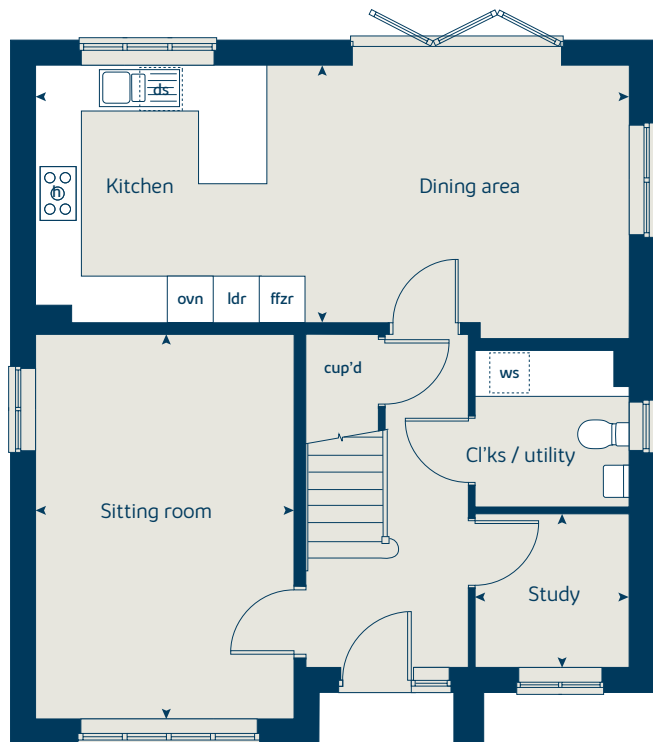
When you have finished with this leaflet please recycle it.

DS12893 / 02.25

First floor



Ground floor





The Alder

4 bedroom home

bovishomes.co.uk

**Bovis
Homes** 

The Alder

4 bedroom home

Ground floor	metres	feet / inches
Kitchen	3.52 x 3.24	11' 7" x 10' 8"
Dining / family area	5.26 x 3.24	17' 3" x 10' 8"
Sitting room	4.28 x 3.39	14' 1" x 11' 1"

First floor	metres	feet / inches
Bedroom 1	3.88 x 3.38	12' 8" x 11' 1"
Bedroom 2	4.34 x 3.03	14' 3" x 9' 11"
Bedroom 3	3.79 x 3.03	12' 5" x 9' 11"
Bedroom 4	3.35 x 3.13	11' 0" x 10' 3"

ovn	oven	cyl	hot water cylinder
h	hob	ldr	larder
ds	dishwasher space	cup'd	cupboard
ws	washing machine space	< >	measuring points
ffzr	fridge freezer		

The Alder | X415 02 Sunnybower Meadows |

The floorplan has been produced for illustrative purposes only. Room sizes shown are between arrow points as indicated on plan. The dimensions have tolerances of + or -50mm and should not be used other than for general guidance. If specific dimensions are required, enquiries should be made to the sales consultant. The floor plans shown are not to scale. Measurements are based on the original drawings. Slight variations may occur during construction.

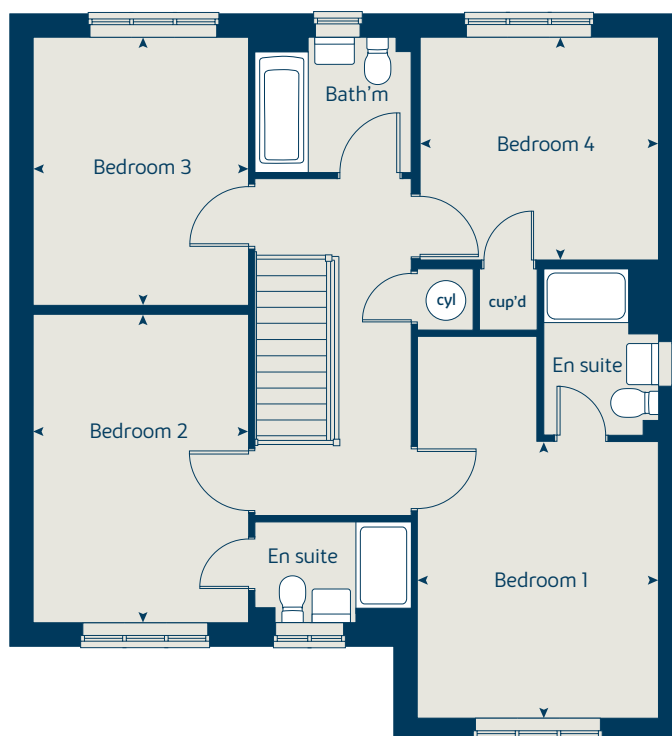
The illustrations shown are computer generated impressions of how the property may look and are indicative only. External details or finishes may vary on individual plots and homes may be built in either detached or attached styles depending on the development layout. Exact specifications, window styles and whether a property is left or right handed may differ from plot to plot. Please speak to our sales consultant for specific plot details.

Produced by Vistry Group Design Studio.

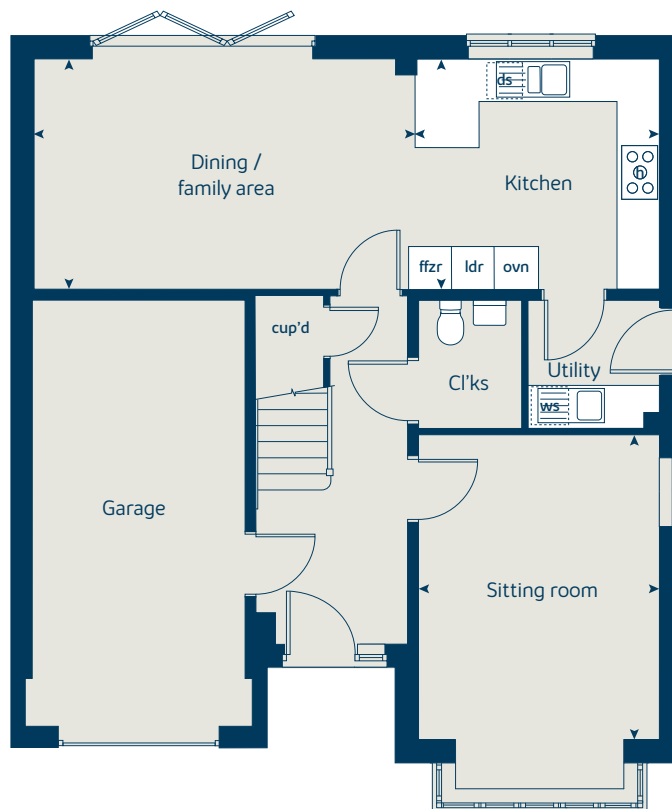
When you have finished with this leaflet please recycle it.

DS12893 / 02.25

First floor



Ground floor





The Birch

5 bedroom home

bovishomes.co.uk

**Bovis
Homes** 

The Birch

5 bedroom home

Ground floor	metres	feet / inches
Kitchen	4.54 x 3.33	14' 11" x 10' 11"
Family / dining area	5.79 x 3.52	19' 0" x 11' 7"
Sitting room	4.30 x 3.61	14' 1" x 11' 10"
Study / dining room	3.41 x 3.00	11' 2" x 9' 10"

First floor

Bedroom 1	3.61 x 3.51	11' 10" x 11' 6"
Bedroom 2	3.92 x 2.91	12' 10" x 9' 7"
Bedroom 3	3.06 x 2.75	10' 1" x 9' 0"
Bedroom 4	3.31 x 2.83	10' 10" x 9' 3"
Bedroom 5	2.83 x 2.69	9' 3" x 8' 10"

ovn	oven	ldr	larder
h	hob	cyl	hot water cylinder
ds	dishwasher space	cup'd	cupboard
ws	washing machine space	◀ ▶	measuring points
ffzr	fridge freezer		

The Birch | X518 (IF) 02 Sunnybower Meadows |

The floorplan has been produced for illustrative purposes only. Room sizes shown are between arrow points as indicated on plan. The dimensions have tolerances of + or -50mm and should not be used other than for general guidance. If specific dimensions are required, enquiries should be made to the sales consultant. The floor plans shown are not to scale. Measurements are based on the original drawings. Slight variations may occur during construction.

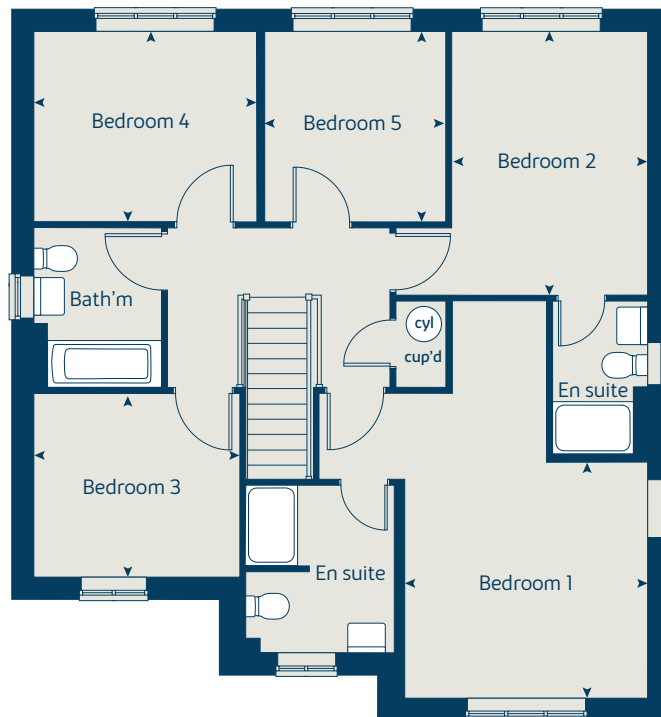
The illustrations shown are computer generated impressions of how the property may look and are indicative only. External details or finishes may vary on individual plots and homes may be built in either detached or attached styles depending on the development layout. Exact specifications, window styles and whether a property is left or right handed may differ from plot to plot. Please speak to our sales consultant for specific plot details.

Produced by Vistry Group Design Studio.

When you have finished with this leaflet please recycle it.

DS12893 / 02.25

First floor



Ground floor





Sunnybower Meadow

Blackburn

Specification

bovishomes.co.uk

**Bovis
Homes** 

Sunnybower Meadow

Blackburn

Use this guide to see what features are included in your new home. Your sales consultant will be happy to discuss the **Select** range of extras available.



Kitchen

	2 bedroom The Juneberry	3 bedroom The Rowan The Hazel The Cypress The Laurel The Beech	4 bedroom The Juniper The Aspen The Willow The Alder	5 bedroom The Birch
Choice of Standard fitted kitchen (doors & worktops)	■	■ ■ ■ ■ ■	■ ■ ■ ■ ■	
Choice of Premium fitted kitchen (doors & worktops)				■
Stainless steel sink and drainer (single bowl) with chrome mixer tap	■			
Stainless steel sink and drainer (single and a half bowl) with chrome mixer tap		■ ■ ■ ■ ■	■ ■ ■ ■ ■	■
Stainless steel sink and drainer (single bowl) with chrome mixer tap in utility				■
Indesit hob (60cm) with built-in single underoven, with stainless steel splashback and curved glass chimney hood	■	■ ■ ■ ■ ■		
Hotpoint hob (75 cm) with built-in double high level oven, with glass splashback and curved glass chimney hood			■ ■ ■ ■ ■	
Bosch (75cm) hob with built-in double high level oven, with glass splashback and stainless steel pyramid chimney hood				■
Pendant light fitting	■	■ ■ ■ ■ ■	■ ■ ■ ■ ■	■
Pre-wired for under-unit lighting option	■	■ ■ ■ ■ ■	■ ■ ■ ■ ■	
LED under-unit flexible strip lighting				■
Fridge / freezer space	■	■ ■ ■ ■ ■		
Indesit Integrated 50 / 50 fridge freezer			■ ■ ■ ■ ■	■
Space for integrated dishwasher with plumbing and electrics	■	■ ■ ■ ■ ■	■ ■ ■ ■ ■	
Indesit Integrated dishwasher				■
Space for washing machine with plumbing and electrics in kitchen	■	■ ■ ■ ■ ■	■ ■ ■ ■ ■	
Space for washing machine with plumbing and electrics in utility			■ ■ ■ ■ ■	■

Bathrooms and en suite(s)

Ideal Standard contemporary white Concept Air sanitaryware	■	■ ■ ■ ■ ■	■ ■ ■ ■ ■	■
Ideal Standard close coupled WC to cloakroom	■	■ ■ ■ ■ ■	■ ■ ■ ■ ■	■
Handheld shower head attachment		■ ■ ■ ■ ■	■ ■ ■ ■ ■	■
Shower over the bath (full height tiling to length and side of bath)	■			
Ideal Standard low profile shower tray with glass enclosure to bedroom 1 en suite		■ ■ ■ ■ ■	■ ■ ■ ■ ■	■
Second shower ensuite to selected bedrooms				■
Choice of standard Porcelanosa wall tiling (splashback, 450mm over bath, and full-height to shower cubicle)*	■	■ ■ ■ ■ ■	■ ■ ■ ■ ■	
Choice of standard Porcelanosa wall tiling (half-height to walls with fitted sanitary ware, half-height over bath, and full-height to shower cubicle)*				■
Chrome bezel LED bulkhead to bathroom and en suite(s)	■	■ ■ ■ ■ ■	■ ■ ■ ■ ■	■
Chrome towel warmer in bathroom and en suite(s)			■ ■ ■ ■ ■	■
Thermostatic chrome shower to en suite		■ ■ ■ ■ ■	■ ■ ■ ■ ■	■
Water waste heat recovery system	■	■ ■ ■ ■ ■	■ ■ ■ ■ ■	■

■ Fitted as standard - included in the property
* Subject to stage of construction

Doors and Windows

Front door with multi-point security locking system and security chain	■	■ ■ ■ ■ ■	■ ■ ■ ■ ■	■
Chrome plated front door numerals	■	■ ■ ■ ■ ■	■ ■ ■ ■ ■	■
PVCu double glazing to windows	■	■ ■ ■ ■ ■	■ ■ ■ ■ ■	■
Double glazed PVCu French doors		■ ■ ■ ■ ■		
Powder coated aluminium double glazed bi-fold doors			■ ■ ■ ■ ■	■
Internal cottage style pre-primed doors with brass satin finish handles	■	■ ■ ■ ■ ■	■ ■ ■ ■ ■	■
Paving outside French / bi-fold door and path to garage personnel door (where applicable)	■	■ ■ ■ ■ ■	■ ■ ■ ■ ■	■

General

Electric car charger	■	■ ■ ■ ■ ■	■ ■ ■ ■ ■	■
PV solar panels	■	■ ■ ■ ■ ■	■ ■ ■ ■ ■	■
White painted walls and smooth white ceilings	■	■ ■ ■ ■ ■	■ ■ ■ ■ ■	■
Combined usb / double sockets in kitchen and bedroom 1	■	■ ■ ■ ■ ■	■ ■ ■ ■ ■	■
Multi-media point in living room	■	■ ■ ■ ■ ■	■ ■ ■ ■ ■	■
TV point to bedroom 1 and family room (where applicable)	■	■ ■ ■ ■ ■	■ ■ ■ ■ ■	■
Master telephone socket to sitting room and study (where applicable)	■	■ ■ ■ ■ ■	■ ■ ■ ■ ■	■
Gas central heating with wall mounted combi-boiler, programme selector and room thermostat(s)	■	■ ■ ■ ■ ■	■ ■ ■ ■ ■	
Gas central heating with wall mounted boiler and separate hot water cylinder, programme selector and room thermostat(s)				■
Thermostatic valves to all radiators (with the exception of rooms with separate thermostat control)	■	■ ■ ■ ■ ■	■ ■ ■ ■ ■	■
Fitted external tap	■	■ ■ ■ ■ ■	■ ■ ■ ■ ■	■
External light fitted to front porch and wiring for external light to rear door	■	■ ■ ■ ■ ■	■ ■ ■ ■ ■	■
Mains wired smoke detectors with battery back-up	■	■ ■ ■ ■ ■	■ ■ ■ ■ ■	■
Battery powered Carbon Monoxide detector (wall mounted) to be provided for each floor	■	■ ■ ■ ■ ■	■ ■ ■ ■ ■	■
Power and lighting to 'on plot' garage (where applicable)	■	■ ■ ■ ■ ■	■ ■ ■ ■ ■	■
Enclosed fenced rear garden, and garden gate (where applicable)	■	■ ■ ■ ■ ■	■ ■ ■ ■ ■	■
Landscaped front gardens	■	■ ■ ■ ■ ■	■ ■ ■ ■ ■	■
NHBC Buildmark cover	■	■ ■ ■ ■ ■	■ ■ ■ ■ ■	■
First two years' customer service support from Bovis Homes	■	■ ■ ■ ■ ■	■ ■ ■ ■ ■	■

2 bedroom The Hawthorn	3 bedroom The Rowan The Hazel The Cypress The Laurel The Beech	4 bedroom The Juniper The Aspen The Willow The Alder	5 bedroom The Birch
---------------------------	---	--	------------------------

So much choice...

Part of the excitement of buying a new home is the thrill of being the first person to live in the property and having a brand new contemporary kitchen and modern bathroom. Our premium brand partners ensure that all of our fixtures and fittings comply with the latest Government building regulations and only branded appliances are installed in your new home.

Once you know what specification comes included, you'll have a choice from our specially selected tiles for your kitchen and bathrooms, as well as kitchen worktops and cupboard doors. You can then use the Bovis Homes **Select** brochure to add the finishing touches to your home to make it extra special for you!

From personalising your bathrooms with stunning ceramics, or adding smooth sliding wardrobes to your master bedroom, there are a wide range of additional options and upgrades available.

The availability of items is subject to the stage of build, and can vary by development and house type. Our sales consultants will be happy to provide guidance.



The specification shown is correct at the time of production. Bovis Homes is continually reviewing and updating the specification on all house / apartment types and therefore reserves the right to change specification details. Photographs depict typical Bovis Homes interiors and may include optional upgrades. For full details regarding the current specification and finishes, please speak to our sales consultant.

Produced by Milk.

When you have finished with this leaflet please recycle it.

1138 / 04.24

**Bovis
Homes** 