

Davington Fields

Faversham

CONSUMER
CODE FOR
HOME BUILDERS

www.consumercode.co.uk





Davington Fields

Faversham

A taste of local life

bovishomes.co.uk

**Bovis
Homes** 



Welcome to Davington Fields

Located in one of the county's most charming and historic market towns Davington Fields enjoys a prime location. Faversham has everything you need within close proximity, yet is just a stones throw from London.

Getting around

Faversham is ideally located for transport links, with the M2 leading to A2 towards London; the M20, M25 and the A229 leading to the South East coast. Faversham train station is less than 2 miles away and has regular services to London via St Pancras International, taking just under 75 minutes.

There are also regular trains to Canterbury in under 15 minutes. Davington Fields is served by the number 3 bus which runs between Canterbury and Sittingbourne. For wider travel London Gatwick Airport can be easily reached in just over an hour.

A trip to the shops

Set within the heart of rural Kent, Davington Fields is ideally situated with an array of local leisure activities, suitable for all the family. There is a plethora of things to do, from enjoying the towns rich history by visiting its many museums, popping to a local eatery or attending one of the various attractions held throughout the year. There are several bars, restaurants, pubs and bistros to enjoy. Faversham town centre caters for even the most discerning pallet, with fresh produce featuring heavily on many menus. The town also boasts the County's oldest antiques market, dating back over 900 years, and holds a variety of additional markets every

month. There is also a wide selection of independent shops for you to browse. The town loves a celebration, with unmissable annual events, including the Faversham Hop Festival in September and Transport weekend in May.

Taking time out

Looking for something to do with the family, well you really are spoiled for choice! Why not take the whole family to enjoy the nearby Mount Ephraim Gardens, Doddington Park Gardens or Brogdale Collections at one of their many activities held throughout the year? One for the adults is the well renowned Shepherd Neame Brewery and Visitors Centre which runs daily tours, enabling you to taste the many ales on offer! Enjoy a trip on the Thames with the Thames Sailing Barge Greta.

Education

There are a multitude of Primary Schools in Faversham and the surrounding area, including the nearby Ethelbert Road Primary School and the Ospringe C of E Primary School. Located in the heart of the town is the Abbey School and Queen Elizabeth's Grammar School which both cater for secondary education. For further education there is the University of Kent in Canterbury.



Davington Fields

Western Link, Faversham,
Kent ME15 7WB

From M20

- Exit M20 at junction 7, take the exit onto A249 Sittingbourne Road
- Continue up Detling Hill
- Use the left lane to merge onto M2 via the slip road to Canterbury / Ramsgate / Dover
- At Junction 6, take the A251 exit to Faversham / Ashford
- Turn left onto Ashford Road
- At the roundabout take 1st exit to stay on A251
- At the junction turn left onto A2 Canterbury Road
- At roundabout take 2nd exit onto B2045 Western Link
- Davington Fields can be found on your right hand side

From Canterbury

- Leave Canterbury via A2050 Rheims Way
- At London Road roundabout, take the 3rd exit onto A2050
- Use the left lane to merge onto A2 Dover Road via the slip road to Faversham
- Continue to follow A2
- At the roundabout, take the 3rd exit onto A2 London Road
- Continue to follow A2
- At the roundabout, take the 2nd exit onto B2045 Western Link
- Davington Fields will be found on your right hand side



MIX
Paper from
responsible sources
FSC® C014177

When you have finished with this leaflet please recycle it.

Cover photograph of Faversham Town Centre. Not view from the development. The streetscene shown above has been produced for illustrative purposes only, please check the details of the homes you are interested in with the sales consultant.

Bovis Homes Limited, South East region
11 Tower View, Kings Hill, West Malling, Kent ME19 4UY. Telephone: 01732 280 400

Produced by the Bovis Homes Graphic Design Department.

EFOBW GD49953 / 08.19



Davington Fields

Faversham

2 bedroom apartments

 Ospringe House

2 bedroom home

 The Hawthorn

3 bedroom home

 The Spruce

 The Cypress

 The Rose

 The Magnolia

4 bedroom home

 The Juniper

 The Chestnut

 Affordable housing

bs bin store
cs cycle store
prow public right of way
pos public open space
ss substation
v visitor space



MIX
Paper from
responsible sources
FSC® C014177

This plan has been produced for home identification purposes only and may be subject to change. Please check the details of your chosen plot and house type with the sales consultant. Development layout plan correct at time of going to print.

Produced by the Vistry Group Design Studio.

EFOBW GD56455 / 08.20

**Bovis
Homes** 



The Hawthorn

2 bedroom home

bovishomes.co.uk

**Bovis
Homes** 

The Hawthorn

2 bedroom home

Ground floor	metres	feet / inches
Kitchen	3.73 x 2.92	12' 2" x 9' 6"
Sitting / dining area	4.07 x 4.05	13' 4" x 13' 3"

First floor

Bedroom 1	4.07 x 2.69	13' 4" x 8' 9"
Bedroom 2	4.07 x 2.82	13' 4" x 9' 3"

The Hawthorn | X203 vt P7 EFOBW |

This floorplan has been produced for illustrative purposes only. Room sizes shown are between arrow points as indicated on plan. The dimensions have tolerances of + or -50mm and should not be used other than for general guidance. If specific dimensions are required, enquiries should be made to the sales consultant.

ovn	oven	ffzs	fridge freezer space
h	hob	cup'd	cupboard
ds	dishwasher space	◀ ▶	measuring points
ws	washing machine space		

Please refer to the sales consultant for specific plot details as the illustrations shown are computer generated impressions of how the property may look so are indicative only. External details or finishes may vary on individual plots and homes may be built in either detached or attached styles depending on the development layout. Exact specifications, window styles and whether a property is left or right handed may differ from plot to plot.

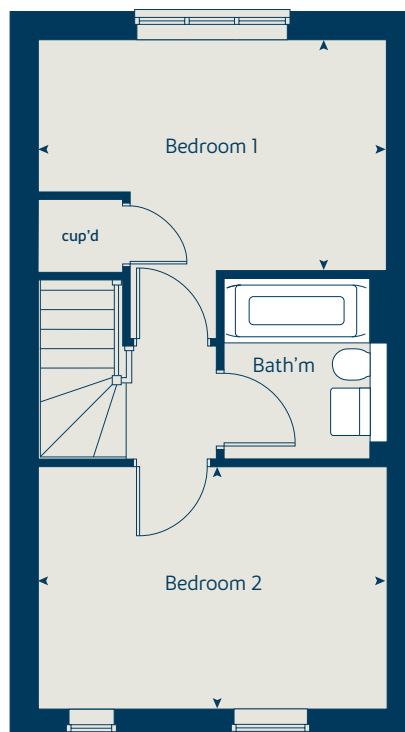
The floorplans shown are not to scale. Measurements are based on the original drawings. Slight variations may occur during construction.

Produced by the Bovis Homes Graphic Design Department.

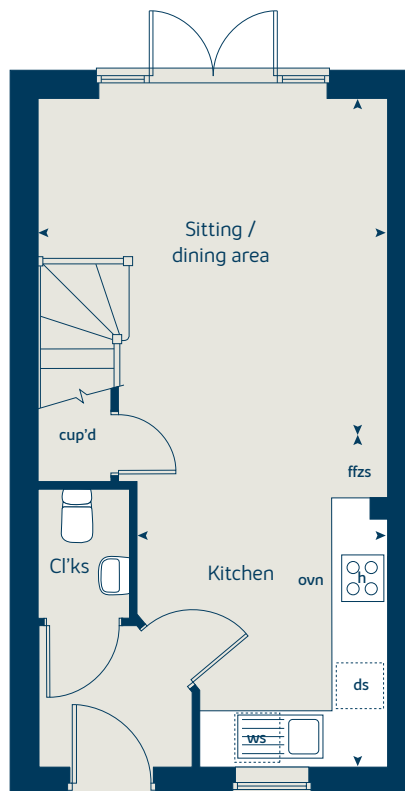
When you have finished with this leaflet please recycle it.

EFOBW GD49953 / 08.19

First floor



Ground floor





The Spruce

3 bedroom home

bovishomes.co.uk

**Bovis
Homes** 

The Spruce

3 bedroom home

Ground floor	metres	feet / inches
Kitchen	3.23 x 2.69	10' 7" x 8' 9"
Dining area	3.14 x 2.30	10' 3" x 7' 6"
Sitting room	5.53 x 3.32	18' 1" x 10' 10"

First floor

Bedroom 1	3.39 x 3.33	11' 1" x 10' 11"
Bedroom 2	3.61 x 3.18	11' 10" x 10' 5"
Bedroom 3	3.61 x 2.25	11' 10" x 7' 4"

The Spruce | X307 (F) P6 EFOBW |

This floorplan has been produced for illustrative purposes only. Room sizes shown are between arrow points as indicated on plan. The dimensions have tolerances of + or -50mm and should not be used other than for general guidance. If specific dimensions are required, enquiries should be made to the sales consultant

* Windows apply to selected plots only. Please see sales consultant for further details.

** Door to utility applies to selected plots only. Please see sales consultant for further details.

ovn	oven	ffzs	fridge freezer space
h	hob	cup'd	cupboard
ds	dishwasher space	◀ ▶	measuring points
ws	washing machine space		

Please refer to the sales consultant for specific plot details as the illustrations shown are computer generated impressions of how the property may look so are indicative only. External details or finishes may vary on individual plots and homes may be built in either detached or attached styles depending on the development layout. Exact specifications, window styles and whether a property is left or right handed may differ from plot to plot.

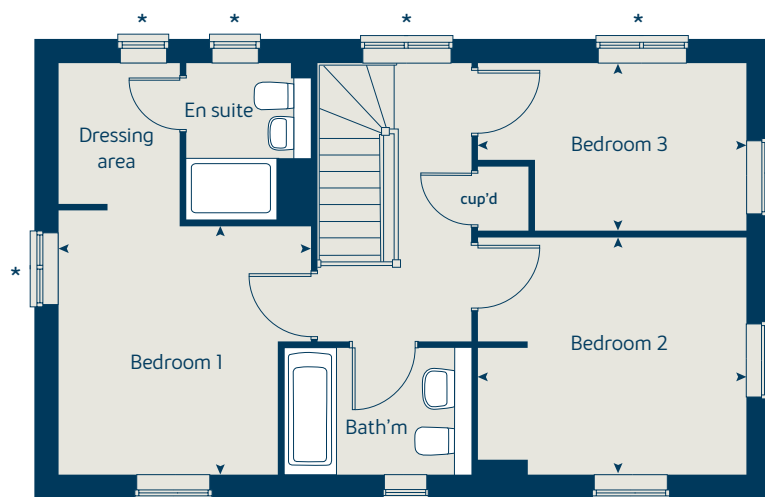
The floorplans shown are not to scale. Measurements are based on the original drawings. Slight variations may occur during construction.

Produced by the Bovis Homes Graphic Design Department.

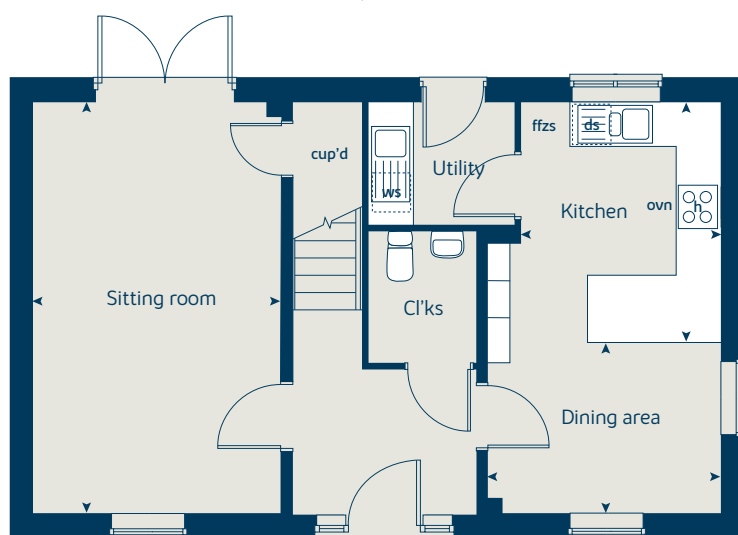
When you have finished with this leaflet please recycle it.

EFOBW GD49953 / 08.19

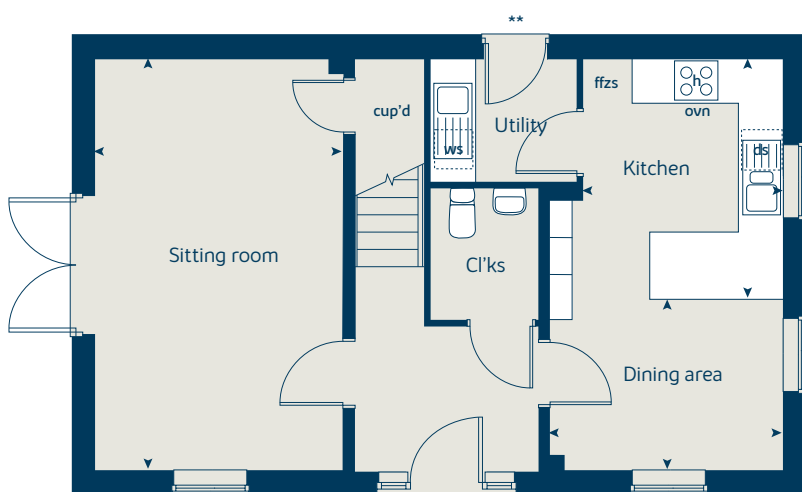
First floor



Ground floor to plot 20 only



Ground floor to selected plots only





The Cypress

3 bedroom home

bovishomes.co.uk

**Bovis
Homes** 

The Cypress

3 bedroom home

Ground floor	metres	feet / inches
Kitchen / dining area	5.52 x 3.12	18' 1" x 10' 2"
Sitting room	4.33 x 3.40	14' 2" x 11' 1"

First floor

Bedroom 1	4.09 x 3.28	13' 5" x 10' 9"
Bedroom 2	3.28 x 2.77	10' 9" x 9' 1"
Bedroom 3	3.54 x 2.16	11' 7" x 7' 1"

The Cypress | X308 (F) P7 EFOBW |

This floorplan has been produced for illustrative purposes only. Room sizes shown are between arrow points as indicated on plan. The dimensions have tolerances of + or -50mm and should not be used other than for general guidance. If specific dimensions are required, enquiries should be made to the sales consultant.

① Alternative layout applies to selected plots only. Please see sales consultant for further details.

* Window applies to selected plots only. Please see sales consultant for further details.

ovn	oven	ffzs	fridge freezer space
h	hob	cup'd	cupboard
ds	dishwasher space	◀ ▶	measuring points
ws	washing machine space		

Please refer to the sales consultant for specific plot details as the illustrations shown are computer generated impressions of how the property may look so are indicative only. External details or finishes may vary on individual plots and homes may be built in either detached or attached styles depending on the development layout. Exact specifications, window styles and whether a property is left or right handed may differ from plot to plot.

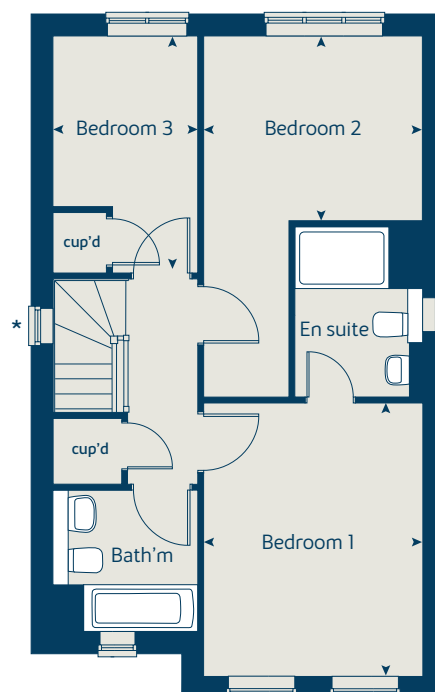
The floorplans shown are not to scale. Measurements are based on the original drawings. Slight variations may occur during construction.

Produced by the Bovis Homes Graphic Design Department.

When you have finished with this leaflet please recycle it.

EFOBW GD49953 / 08.19

First floor



Ground floor





The Magnolia

3 bedroom home

bovishomes.co.uk

**Bovis
Homes** 

The Magnolia

3 bedroom home

Ground floor	metres	feet / inches
Kitchen / dining room	4.74 x 3.37	15' 6" x 11' 0"
Sitting room	3.72 x 3.72	12' 2" x 12' 2"

First floor

Bedroom 1	3.06 x 2.55	10' 0" x 8' 4"
Bedroom 2	3.00 x 2.55	9' 10" x 8' 4"
Bedroom 3	2.81 x 2.07	9' 2" x 6' 8"

The Magnolia | X327 P4 EFOBW |

This floorplan has been produced for illustrative purposes only. Room sizes shown are between arrow points as indicated on plan. The dimensions have tolerances of + or -50mm and should not be used other than for general guidance. If specific dimensions are required, enquiries should be made to the sales consultant.

ovn	oven	ffzs	fridge freezer space
h	hob	ldr	larder
ds	dishwasher space	cup'd	cupboard
ws	washing machine space	◀ ▶	measuring points

Please refer to the sales consultant for specific plot details as the illustrations shown are computer generated impressions of how the property may look so are indicative only. External details or finishes may vary on individual plots and homes may be built in either detached or attached styles depending on the development layout. Exact specifications, window styles and whether a property is left or right handed may differ from plot to plot.

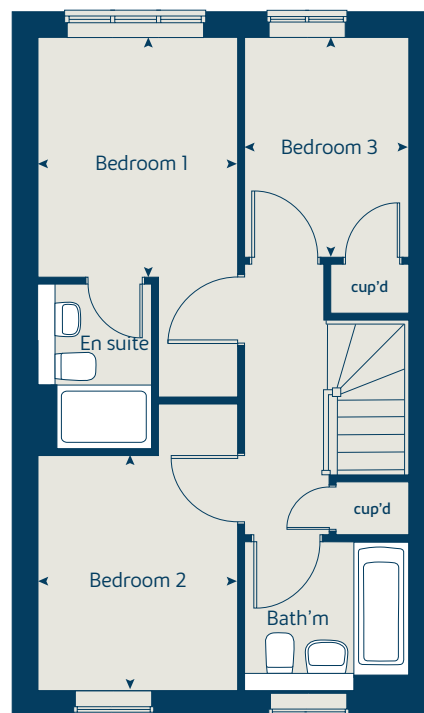
The floorplans shown are not to scale. Measurements are based on the original drawings. Slight variations may occur during construction.

Produced by the Bovis Homes Graphic Design Department.

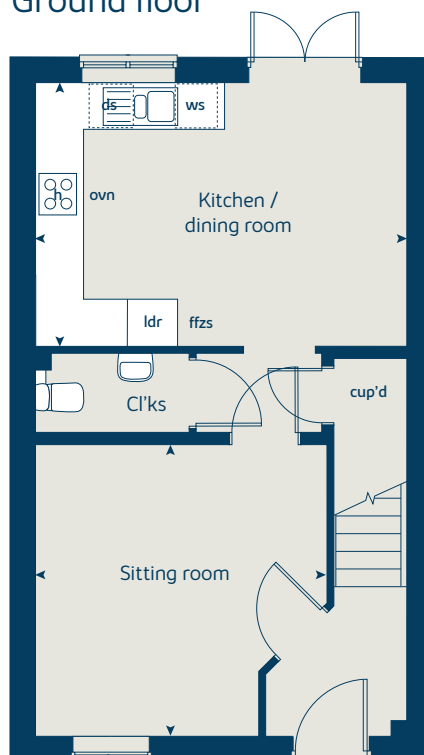
When you have finished with this leaflet please recycle it.

EFOBW GD49953 / 08.19

First floor



Ground floor





The Rose

3 bedroom home

bovishomes.co.uk

**Bovis
Homes** 

The Rose

3 bedroom home

Ground floor	metres	feet / inches
Kitchen / dining area	4.74 x 4.46	15' 6" x 14' 7"
Study	2.57 x 2.13	8' 5" x 6' 11"

First floor

Sitting room	4.74 x 3.46	15' 6" x 11' 4"
Bedroom 3	4.74 x 2.57	15' 6" x 8' 5"

Second floor

Bedroom 1	4.74 x 3.46	15' 6" x 11' 4"
Bedroom 2	4.74 x 2.57	15' 6" x 8' 5"

The Rose | SE3070 (X310) P3 EFOBW |

This floorplan has been produced for illustrative purposes only. Room sizes shown are between arrow points as indicated on plan. The dimensions have tolerances of + or -50mm and should not be used other than for general guidance. If specific dimensions are required, enquiries should be made to the sales consultant.

ovn	oven	ffzs	fridge freezer space
h	hob	cup'd	cupboard
ds	dishwasher space	◀ ▶	measuring points
ws	washing machine space		

Please refer to the sales consultant for specific plot details as the illustrations shown are computer generated impressions of how the property may look so are indicative only. External details or finishes may vary on individual plots and homes may be built in either detached or attached styles depending on the development layout. Exact specifications, window styles and whether a property is left or right handed may differ from plot to plot.

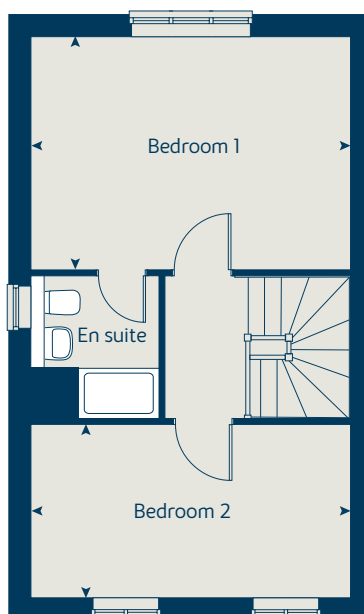
The floorplans shown are not to scale. Measurements are based on the original drawings. Slight variations may occur during construction.

Produced by the Bovis Homes Graphic Design Department.

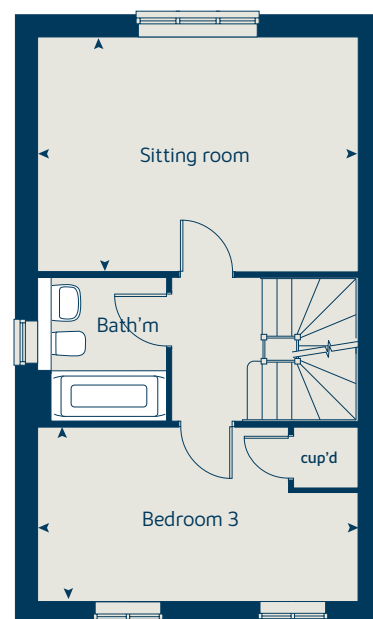
When you have finished with this leaflet please recycle it.

EFOBW GD53373 / 11.19

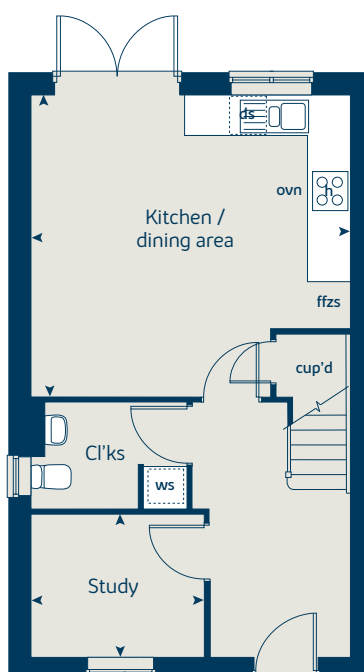
Second floor



First floor



Ground floor





The Juniper

4 bedroom home

bovishomes.co.uk

**Bovis
Homes** 

The Juniper

4 bedroom home

Ground floor	metres	feet / inches
Kitchen / dining / family area	7.21 x 3.51	23' 7" x 11' 6"
Sitting room	4.55 x 3.04	14' 7" x 10' 0"
Study	2.34 x 1.85	7' 8" x 6' 0"

First floor

Bedroom 1	4.66 x 3.05	15' 3" x 10' 0"
Bedroom 2	2.97 x 2.84	9' 8" x 9' 3"
Bedroom 3	3.60 x 2.38	11' 9" x 7' 9"
Bedroom 4	3.51 x 2.38	11' 6" x 7' 9"

The Juniper | X412 P4 EFOBW |

This floorplan has been produced for illustrative purposes only. Room sizes shown are between arrow points as indicated on plan. The dimensions have tolerances of + or -50mm and should not be used other than for general guidance. If specific dimensions are required, enquiries should be made to the sales consultant.

ovn	oven	ffzr	fridge freezer
h	hob	w	wardrobe
ds	dishwasher space	cup'd	cupboard
ws	washing machine space	◀ ▶	measuring points
ldr	larder		

Please refer to the sales consultant for specific plot details as the illustrations shown are computer generated impressions of how the property may look so are indicative only. External details or finishes may vary on individual plots and homes may be built in either detached or attached styles depending on the development layout. Exact specifications, window styles and whether a property is left or right handed may differ from plot to plot.

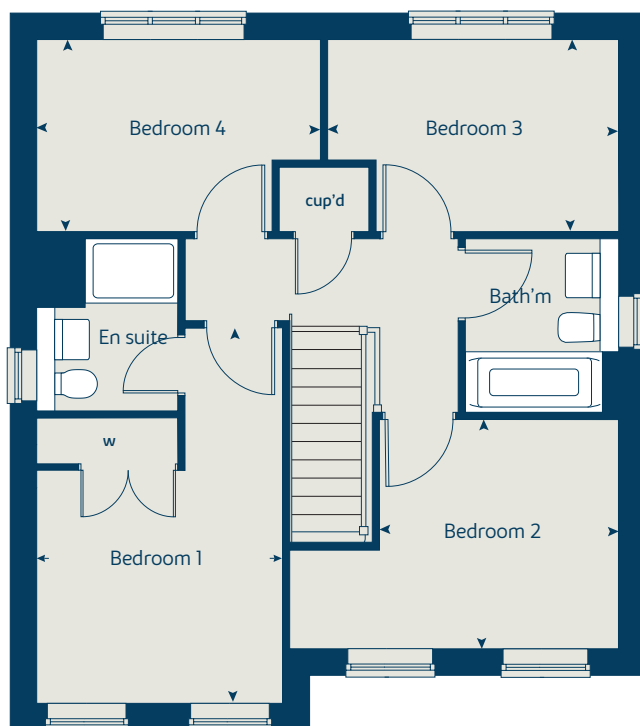
The floorplans shown are not to scale. Measurements are based on the original drawings. Slight variations may occur during construction.

Produced by the Bovis Homes Graphic Design Department.

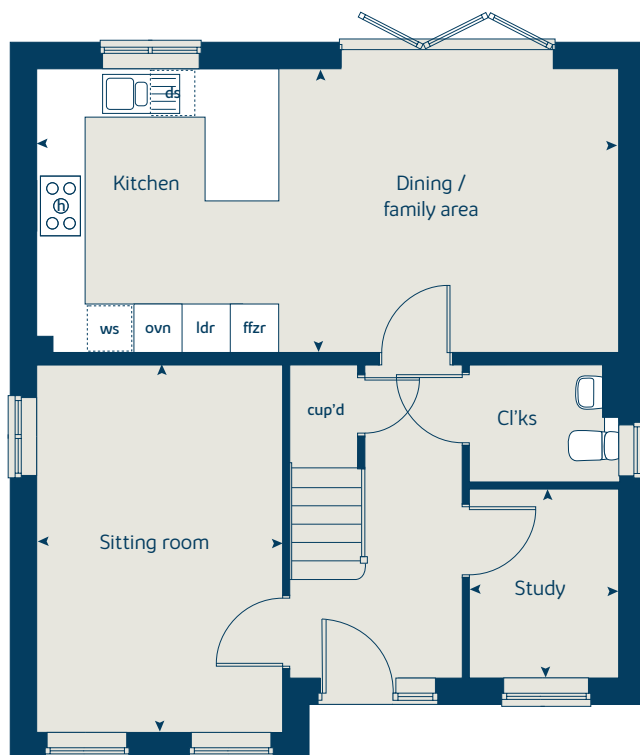
When you have finished with this leaflet please recycle it.

EFOBW GD49953 / 08.19

First floor



Ground floor





The Chestnut

4 bedroom home

bovishomes.co.uk

**Bovis
Homes** 

The Chestnut

4 bedroom home

Ground floor	metres	feet / inches
Kitchen	4.03 x 3.04	13' 2" x 9' 11"
Dining / family area	4.59 x 2.85	15' 0" x 9' 4"
Sitting room	4.98 x 3.40	16' 4" x 11' 1"
Study	3.40 x 1.81	11' 1" x 5' 11"

First floor

Bedroom 1	3.21 x 2.98	10' 6" x 9' 8"
Bedroom 2	3.48 x 3.30	11' 5" x 10' 10"
Bedroom 3	3.25 x 2.35	10' 7" x 7' 8"
Bedroom 4	3.42 x 2.34	11' 2" x 7' 8"

The Chestnut | X413 P5 EFOBW |

This floorplan has been produced for illustrative purposes only. Room sizes shown are between arrow points as indicated on plan. The dimensions have tolerances of + or -50mm and should not be used other than for general guidance. If specific dimensions are required, enquiries should be made to the sales consultant.

* Window applies to selected plots only. Please see sales consultant for further details.

① Alternative layouts apply to selected plots only. Please see sales consultant for further details.

ovn	oven	ffzr	fridge freezer
h	hob	w	wardrobe
ds	dishwasher space	cup'd	cupboard
ws	washing machine space	◀ ▶	measuring points
ldr	larder		

Please refer to the sales consultant for specific plot details as the illustrations shown are computer generated impressions of how the property may look so are indicative only. External details or finishes may vary on individual plots and homes may be built in either detached or attached styles depending on the development layout. Exact specifications, window styles and whether a property is left or right handed may differ from plot to plot.

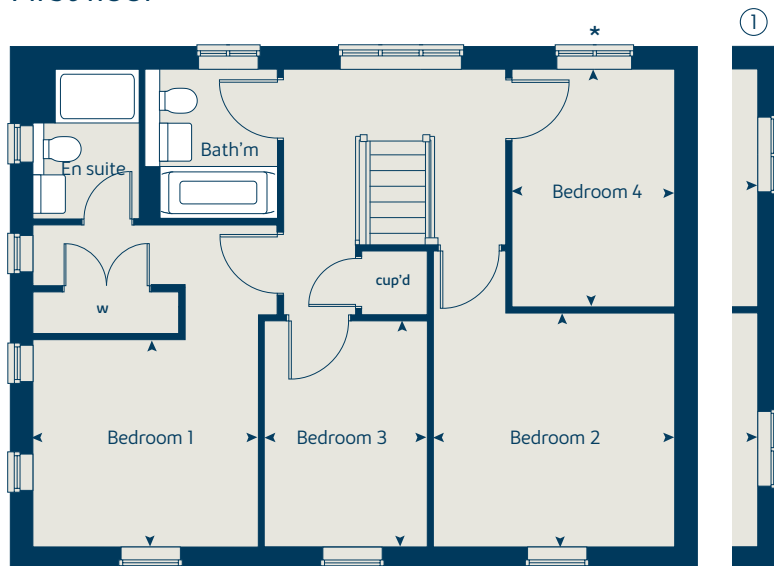
The floorplans shown are not to scale. Measurements are based on the original drawings. Slight variations may occur during construction.

Produced by the Bovis Homes Graphic Design Department.

When you have finished with this leaflet please recycle it.

EFOBW GD49953 / 12.19

First floor



Ground floor



Use this guide to see what features are included in your new home. Your sales consultant will be happy to discuss the **Select** range of extras available.

Kitchen

- Choice of standard fitted kitchen (doors and worktops)*
- Integrated oven, hob and hood

Bathroom

- Ideal standard WC
- Choice of Porcelanosa wall tiling (splashback, half-height over bath, and full-height to shower cubicle)*
- Shaver socket / toothbrush charger to bathroom and en suites

Doors and Windows

- Front door with multi-point security locking system and security chain
- PVCu double glazing to windows
- White painted four panel doors with chrome lever handles

General

- White painted walls and smooth white ceilings
- Combined usb / double sockets in kitchen and bedroom 1
- Multi-media point in sitting room
- TV point to bedroom 1 and family room (where applicable)
- Master telephone socket
- Gas central heating with wall mounted boiler, programme selector and room thermostat(s)
- Thermostatic valves to radiators (with the exception of rooms with separate thermostat control)
- Mains wired smoke detectors with battery back-up
- NHBC Buildmark cover
- First two years' customer service support from Bovis Homes

* subject to stage of construction



Ospringe House

Faversham



When you have finished with this leaflet please recycle it.

The specification shown in this leaflet is correct at the time of going to press. Bovis Homes is continually reviewing and updating the specification on all houstypes and therefore reserves the right to change specification details. Photographs depict a typical Bovis Homes interior and may include optional upgrades. For full details regarding current specification and finishes, for the plots you are interested in, please refer to our sales consultant.

This leaflet has been produced for illustrative purposes only. The apartment building shown (including its position) is a computer generated artists impression. Any surrounding areas, landscaping, roads, footpaths, driveways, walls, fences, trees, bushes and other details shown in this illustration are merely to create an impression. Please refer to the sales consultant for details of individual apartments. Please see the development layout plan for details of the apartment location and proximity to other houses.

Produced by the Bovis Homes Graphic Design Department.

EFOBW GD49953 / 08.19



2 bedroom apartments

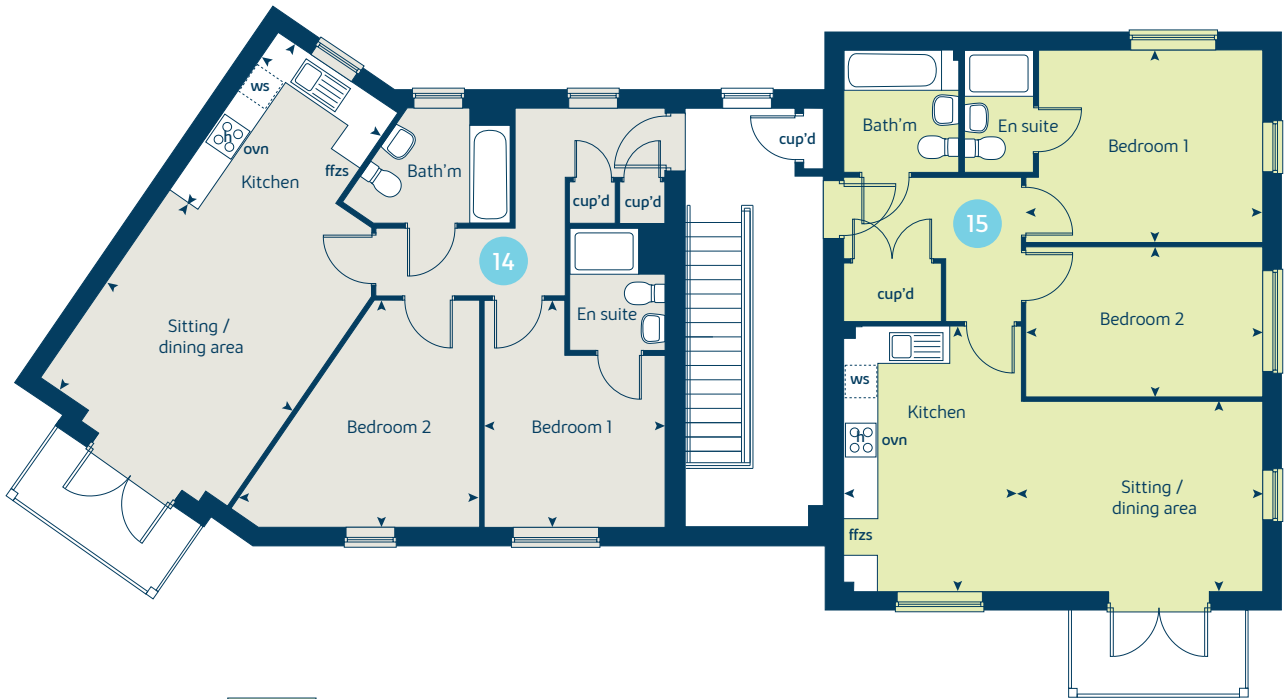
bovishomes.co.uk



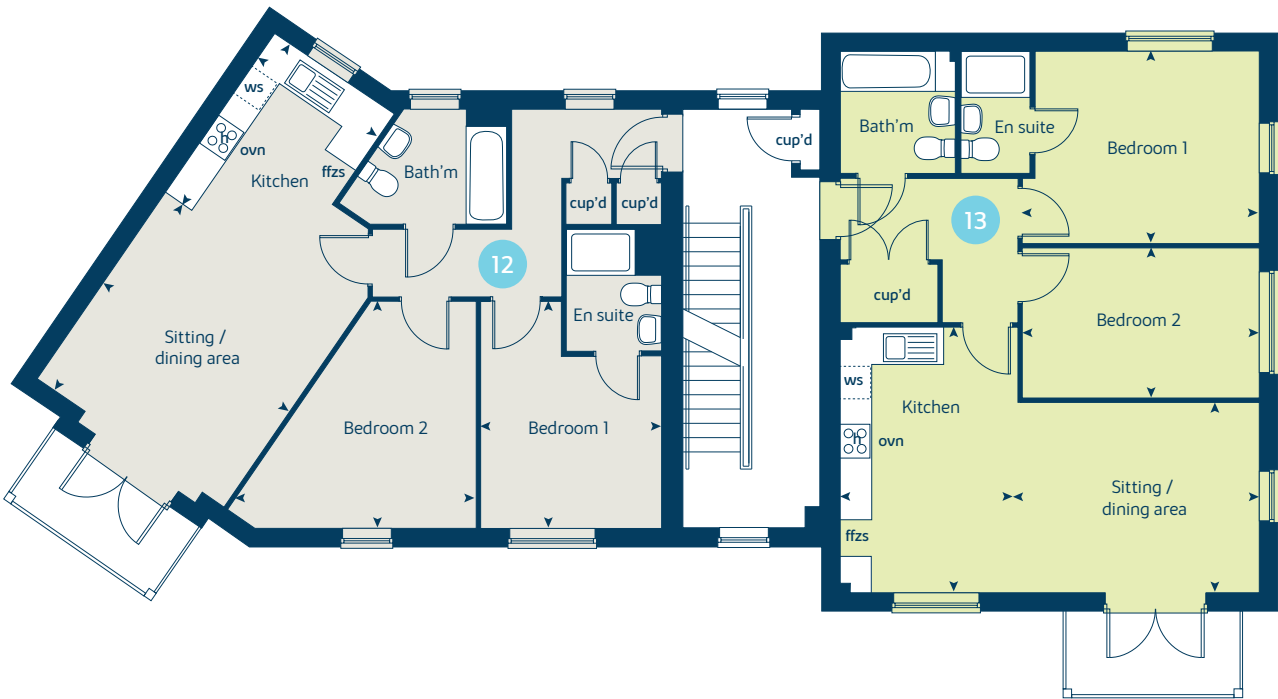
Ospringe House

2 bedroom apartments

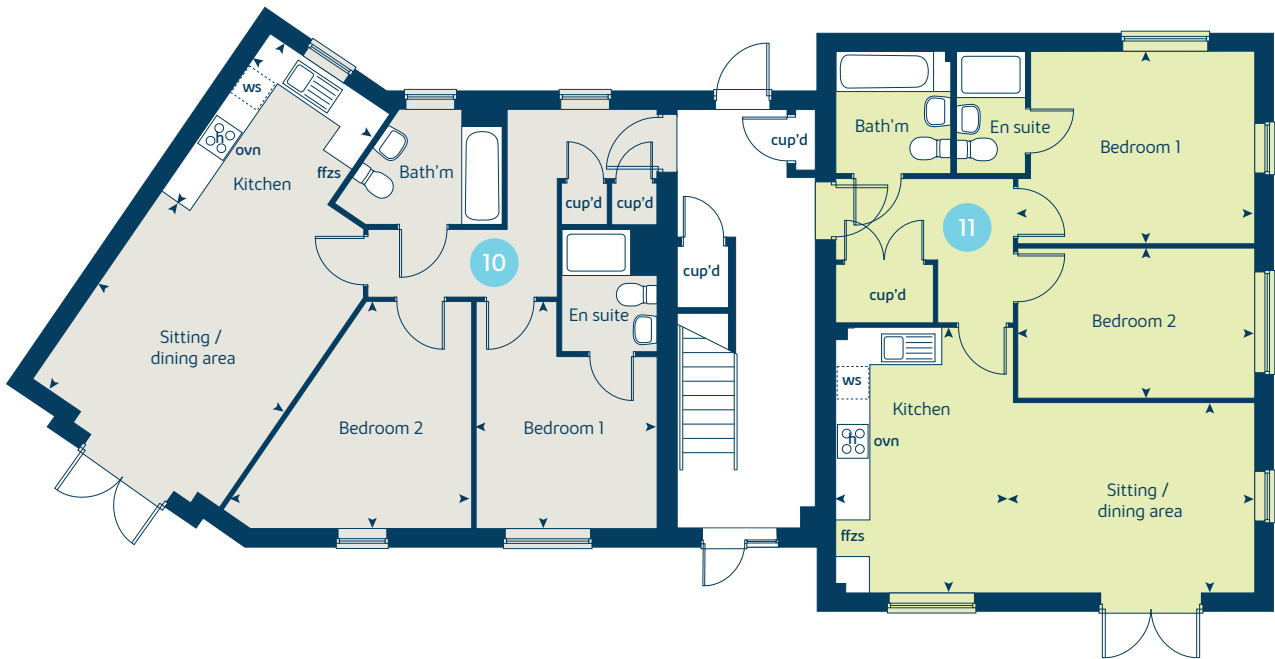
Second floor



First floor



Ground floor



	metres	feet / inches
Kitchen	3.34 x 2.52	10' 11" x 8' 3"
Sitting / dining area	3.98 x 3.92	13' 1" x 13' 0"
Bedroom 1	3.96 x 3.16	13' 0" x 10' 4"
Bedroom 2	4.35 x 3.92	14' 3" x 13' 0"

	metres	feet / inches
Kitchen	4.64 x 3.10	15' 3" x 10' 2"
Sitting / dining area	4.21 x 3.32	13' 10" x 10' 11"
Bedroom 1	4.14 x 3.36	13' 7" x 11' 0"
Bedroom 2	4.14 x 2.63	13' 7" x 8' 7"

Ospringe House | EFOBW |
This floorplan has been produced for illustrative purposes only. Room sizes shown are between arrow points as indicated on plan. The dimensions have tolerances of + or -50mm and should not be used other than for general guidance. If specific dimensions are required, enquiries should be made to the sales consultant.

ovn	oven	cup'd	cupboard
h	hob	w	wardrobe
ws	washing machine space	◀ ▶	measuring points
ffzs	fridge freezer space		

So much choice...

Part of the excitement of buying a new home is the thrill of being the first person to live in the property and having a brand new contemporary kitchen and modern bathroom. Our premium brand partners ensure that all of our fixtures and fittings comply with the latest Government building regulations and only branded appliances are installed in your new home.

Once you know what specification comes included, you'll have a choice from our specially selected tiles for your kitchen and bathrooms, as well as kitchen worktops and cupboard doors. You can then use the Bovis Homes **Select** brochure to add the finishing touches to your home to make it extra special for you!

From personalising your bathrooms with stunning ceramics, or adding smooth sliding wardrobes to your master bedroom, there are a wide range of additional options and upgrades available.

The availability of items is subject to the stage of build, and can vary by development and house type. Our sales advisors will be happy to provide guidance.



Davington Fields Faversham



When you have finished with this leaflet please recycle it.

The Synergy specification shown in this leaflet is correct at the time of going to press. Bovis Homes is continually reviewing and updating the specification on all housetypes and therefore reserves the right to change specification details. Photographs depict a typical Bovis Homes interior and may include optional upgrades. For full details regarding current specification and finishes, for the plots you are interested in, please refer to our sales consultant.

Produced by the Vistry Group Design Studio.

EFOBW GD60729 / 07.21



Specification

bovishomes.co.uk



Davington Fields

Faversham

Use this guide to see what features are included in your new home. Your sales consultant will be happy to discuss the **Select** range of extras available.



Kitchen

	2 bedroom The Hawthorn	3 bedroom The Magnolia The Cypress The Spruce The Rose	4 bedroom The Juniper The Chestnut
Choice of standard fitted kitchen (doors and worktops)*	■	■ ■ ■ ■	■ ■
Stainless steel sink and drainer (single bowl) with chrome mixer tap	■		
Stainless steel sink and drainer (single and a half bowl) with chrome mixer tap		■ ■ ■ ■	■ ■
Stainless steel sink and drainer (single bowl) with chrome mixer tap in utility		■ ■	
Hob (60cm) with built-in single oven (high level or under), with glass splashback and curved glass chimney hood	■	■ ■ ■ ■	
Hob (75cm) with built-in double oven (high level or under), with glass splashback and curved glass chimney hood			■ ■
Pre-wired for under unit lighting option	■	■ ■ ■ ■	
LED under unit flexible strip lighting			■ ■
Fridge / freezer space	■	■ ■ ■ ■	
Integrated 50 / 50 fridge freezer			■ ■
Space for integrated dishwasher with plumbing and electrics (with removable base unit)	■	■ ■ ■ ■	■ ■
Space for washing machine with plumbing and electrics in utility		■ ■	
Space for washing machine with plumbing and electrics in kitchen	■	■	■ ■

Bathrooms and en suite(s)

Ideal Standard contemporary white sanitary ware suite	■	■ ■ ■ ■	■ ■
Low profile shower tray with glass enclosure		■ ■ ■ ■	■ ■
Handheld hair wash attachment		■ ■ ■ ■	■ ■
Shower over the bath	■		
Choice of Standard Porcelanosa wall tiling (splashback, full-height over bath)*	■		
Choice of Standard Porcelanosa wall tiling (splashback, half-height over bath, and full-height to shower cubicle)*		■ ■ ■ ■	■ ■
Shaver socket / toothbrush charger to bathroom and main en suite	■	■ ■ ■ ■	■ ■
Chrome bezel bulkhead to bathroom and en suite(s)	■	■ ■ ■ ■	■ ■
White towel warmer in bathroom / en suite (where applicable)	■	■ ■ ■ ■	
Chrome towel warmer in bathroom and en suite(s)			■ ■

Bedrooms

	2 bedroom The Hawthorn	3 bedroom The Magnolia The Cypress The Spruce The Rose	4 bedroom The Juniper The Chestnut
Built-in wardrobe(s) to bedroom 1 (with shelf and rail)			■ ■

Doors and Windows

Front door with multi-point security locking system and security chain	■	■ ■ ■ ■	■ ■
PVCu double glazing to windows	■	■ ■ ■ ■	■ ■
Double glazed PVCu French doors	■	■ ■ ■ ■	■
Powder coated aluminium double glazed bi-fold doors			■ ■
White painted four-panel internal doors with chrome lever handles	■	■ ■ ■ ■	■ ■
Paving outside French / bifold door and path to garage personnel door (where applicable)	■	■ ■ ■ ■	■ ■

General

White painted walls and smooth white ceilings	■	■ ■ ■ ■	■ ■
Combined usb / double sockets in kitchen and bedroom 1	■	■ ■ ■ ■	■ ■
Multi-media point in sitting room	■	■ ■ ■ ■	■ ■
TV point to bedroom 1 and family room (where applicable)	■	■ ■ ■ ■	■ ■
Master telephone socket (where applicable)	■	■ ■ ■ ■	■ ■
Gas central heating with wall mounted combi-boiler, programme selector and room thermostat(s)	■	■ ■ ■ ■	■ ■
Thermostatic valves to radiators (with the exception of rooms with separate thermostat control)	■	■ ■ ■ ■	■ ■
Wiring for external light to front porch, and rear door	■	■ ■ ■ ■	■ ■
Mains wired smoke detectors with battery back-up	■	■ ■ ■ ■	■ ■
Power and lighting to 'on plot' garage (where applicable)		■ ■ ■ ■	■ ■
Enclosed rear garden, and garden gate (where applicable)	■	■ ■ ■ ■	■ ■
Landscaped front gardens	■	■ ■ ■ ■	■ ■
NHBC Buildmark cover	■	■ ■ ■ ■	■ ■
First two years' customer service support from Bovis Homes	■	■ ■ ■ ■	■ ■

■ Fitted as standard - included in the property
* Subject to stage of construction