

Whiteley Meadows

Development update



Issue 10 | Winter 2025



Keeping you updated

We wanted to provide you with an update on Whiteley Meadows and what you can expect from us over the coming months.

Overview

Summary of what's being built:

- Provision of extra care facilities which will be delivered by Winchester City Council.
- Play Areas comprising of 2 NEAPs and 4 LEAPs and 21 Playful landscape areas many of which are now open with the final areas opening 2026 with all complete by 2028.
- Comprehensive Green Infrastructure and landscaping including informal green space and habitat enhancement planting is completed across all occupied areas.

Site activity

- Phase 9B construction is well underway with the first few plots have completed.
- Roads have now been completed on Parcel 13 & Parcel 15.
- All Hoggin paths are near complete.
- Works have now started on Allotments 3 & 2 with the hope of completion by December 2025

Specific item

To help protect the new footway and cycleway surfaces between 196 - 210 Whiteley Way at Whiteley Meadows, we kindly ask residents not to park vehicles on them. Parking on these areas can cause damage to the wearing course, leading to repairs and disruption. Thank you for your cooperation.

Timeline

- 2 Local Centres (north and south) providing up to 2000sqm of flexible space, the local centre on the North have now started with the aim to deliver the local centre's building by the end of Summer 2026.
- Second primary school and secondary school which will be delivered by Hampshire County Council anticipated 2027-28
- Community buildings – Opening 2026
- Sports facilities (including pavilion, 2 grass pitches and 2 all-weather pitches), pitch 1 is still on target for delivery in Spring 2026.
- 4 Allotments in total, the first of which is now open, with the remaining allotments to be delivered in Spring 2026
- Cornerstone Primary – now open.

Introducing your managing agent

Trinity (Estates) Property Management LTD and have various responsibilities within this development, these are as follows: Unadopted roadways and pathways, open space areas, shared parking areas, attenuation basin/swales, areas of play. The sections of water course that runs through the South of the development, along with the storm water ponds serving the development. Fencing, railings or retaining walls located within the communal areas will also be the responsibility of the management company.

Our new phase is even more greener...

Hedgehog highways/bat & bird boxes

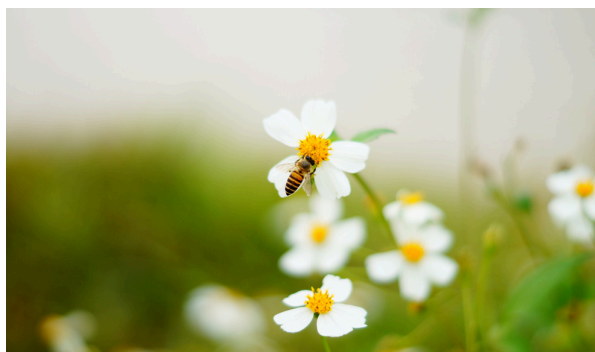
Swift nesting boxes will be installed throughout the development. These are supplied by Action for Swifts and their product is a S-Brick which is a proven product that integrates a home for Swift and other cavity-nesting birds, without compromising the integrity or appearance of the building.

PV solar panels

Solar panels (sometimes called PV panels) create free electricity for your home, 365 days a year. that's good for the environment and your wallet!

Electric vehicle charging points

The future of cars is electric. That's why many of our new homes at Whiteley Meadows, Phase 9B come with a charging point, which is compatible with any electric vehicle.



Network coverage

The communication mast has been constructed, BT Open reach have been instructed to connect the network currently we have not been informed with a connection date but rest assured we will be pursuing this.

2 bedroom home

The Rosemary

3 bedroom homes

The Majoram

The Caraway

The Basil

The Thyme

The Sage

4 bedroom homes

The Sorrel

The Lavage

The Fennel

5 bedroom home

The Bay

Pre-sold homes

2 bedroom homes

3 bedroom homes

4 bedroom homes



How will the development benefit the local community?

Bovis Homes, Linden Homes & Countryside Homes as part of Vistry Group & all other House Builders at Whiteley Meadows will also support the local community. Vistry Group will be contributing over £25M towards the local area.

- **Local Education** - transfer of land including all associated services and utilities for the provision of 2 primary and a secondary school to Hampshire County Council. We will also be contributing £41.24M to the Council for the delivery of these schools.
- **Highways** - a contribution of £6.1M towards local highways and infrastructure, including supporting sustainable transport such as cycle ways and bus stop, traffic management, highway improvements
- **Areas of Play & Sports Pitches** - a contribution of £11M will be towards providing Sports Pitches, Play Areas and Public Open Spaces with maintenance.
- **Community Services** - contribution of £312,5K towards refurb or improvement of existing community services locally and to include the employment of a Community Development Worker or provision of facilities within the new secondary school. £350K will be go towards the GP car park expansion.
- **Ecology** - a contribution of £390K to local Ecology projects.
- **Waste Management** - £86K towards providing a local waste/recycling centre.
- **Affordable Housing** - Vistry will also be delivering and contributing £8.5M towards affordable housing throughout North Whiteley.

Please be aware that the dates and information provided are correct at time of print and are dependent on a number of factors, including weather, so are subject to change.

Thank you for your patience while the construction work is taking place. We try to keep disruption to a minimum but appreciate it can be noisy and dirty at times so do contact us if you have any questions, or if you'd like to provide any feedback, by emailing:

customerservices.southern@vistry.co.uk

Information collected from Action for Swifts <https://www.actionforswifts.com/>

