

# Albany Park

Church Crookham





# Albany Park

Church Crookham

Development plan

[bovishomes.co.uk](http://bovishomes.co.uk)

**Bovis  
Homes** 

# Albany Park

## Church Crookham

Public open space



### Pre-sold homes

- 1 & 2 bedroom home
- 2 bedroom home
- 3 bedroom home

### 1 bedroom home

- The Robin
- The Robin II
- The Chaffinch
- The Chaffinch II

### 3 bedroom homes

- The Cypress
- The Hazel
- The Spruce

### 4 bedroom homes

- The Chestnut
- The Goldfinch
- The Juniper
- The Mulberry
- The Willow

### 5 bedroom homes

- The Yew
- The Lime

v visitor space

Public open space



# The Robin

1 bedroom home

[bovishomes.co.uk](http://bovishomes.co.uk)

**Bovis  
Homes** 

# The Robin

1 bedroom home

Ground floor	metres	feet / inches
Kitchen / dining / sitting	5.45 x 4.60	17' 11" x 15' 3"
Bedroom 1	3.88 x 3.57	12' 9" x 11' 9"

ovn	oven	ffzs	fridge freezer space
h	hob	cup'd	cupboard
ds	dishwasher space	◀ ▶	measuring points
ws	washing machine space		

## The Robin | Type A Type 2 Albany Park |

The floorplan has been produced for illustrative purposes only. Room sizes shown are between arrow points as indicated on plan. The dimensions have tolerances of + or -50mm and should not be used other than for general guidance. If specific dimensions are required, enquiries should be made to the sales consultant. The floor plans shown are not to scale. Measurements are based on the original drawings. Slight variations may occur during construction.

The illustrations shown are computer generated impressions of how the property may look and are indicative only. External details or finishes may vary on individual plots and homes may be built in either detached or attached styles depending on the development layout. Exact specifications, window styles and whether a property is left or right handed may differ from plot to plot. Please speak to our sales consultant for specific plot details.

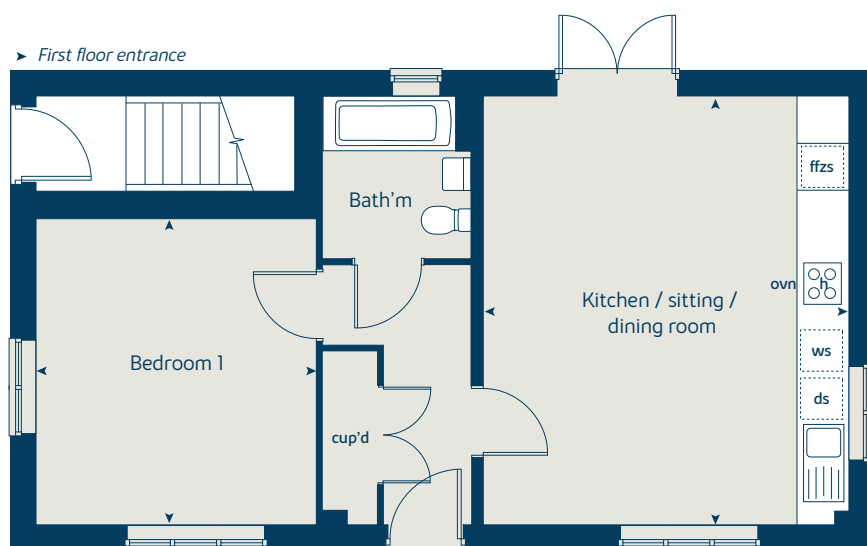
Produced by the Vistry Group Design Studio.

When you have finished with this leaflet please recycle it.

DS09855 / 05.24

## Ground floor

► First floor entrance





# The Robin II

1 bedroom home

[bovishomes.co.uk](http://bovishomes.co.uk)

**Bovis  
Homes** 

# The Robin II

1 bedroom home

First floor	metres	feet / inches
Kitchen / dining / sitting	5.45 x 4.60	17' 11" x 15' 3"
Bedroom 1	3.88 x 3.57	12' 9" x 11' 9"

ovn	oven	ffzs	fridge freezer space
h	hob	cup'd	cupboard
ds	dishwasher space	◀ ▶	measuring points
ws	washing machine space		

## The Robin II | Type A Type 2 Albany Park |

The floorplan has been produced for illustrative purposes only. Room sizes shown are between arrow points as indicated on plan. The dimensions have tolerances of + or -50mm and should not be used other than for general guidance. If specific dimensions are required, enquiries should be made to the sales consultant. The floor plans shown are not to scale. Measurements are based on the original drawings. Slight variations may occur during construction.

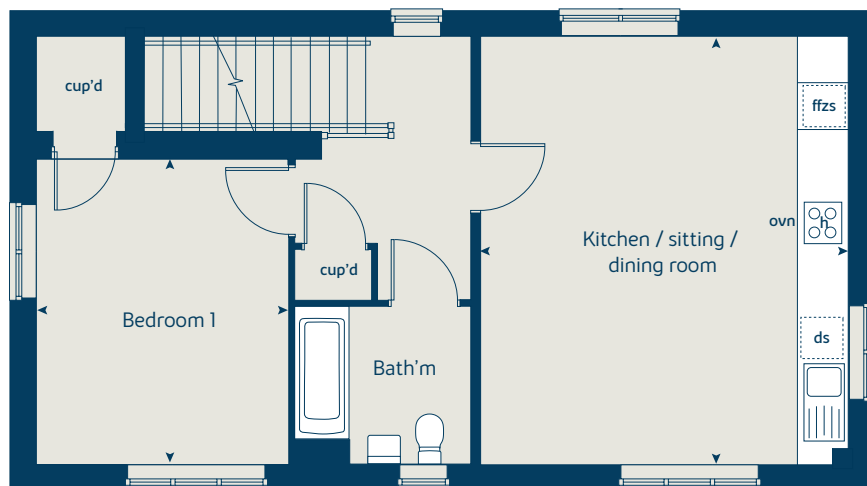
The illustrations shown are computer generated impressions of how the property may look and are indicative only. External details or finishes may vary on individual plots and homes may be built in either detached or attached styles depending on the development layout. Exact specifications, window styles and whether a property is left or right handed may differ from plot to plot. Please speak to our sales consultant for specific plot details.

Produced by the Vistry Group Design Studio.

When you have finished with this leaflet please recycle it.

DS09855 / 05.24

## First floor





# The Chaffinch

1 bedroom home

[bovishomes.co.uk](http://bovishomes.co.uk)

**Bovis  
Homes** 

# The Chaffinch

## 1 bedroom home

Ground floor	metres	feet / inches
Kitchen / dining / sitting	6.05 x 3.89	19' 10" x 12' 9"
Bedroom 1	5.45 x 2.75	17' 11" x 9' 0"

ovn	oven	ffzs	fridge freezer space
h	hob	cup'd	cupboard
ds	dishwasher space	◀ ▶	measuring points
ws	washing machine space		

### The Chaffinch | Type A Type 2 Albany Park |

The floorplan has been produced for illustrative purposes only. Room sizes shown are between arrow points as indicated on plan. The dimensions have tolerances of + or -50mm and should not be used other than for general guidance. If specific dimensions are required, enquiries should be made to the sales consultant. The floor plans shown are not to scale. Measurements are based on the original drawings. Slight variations may occur during construction.

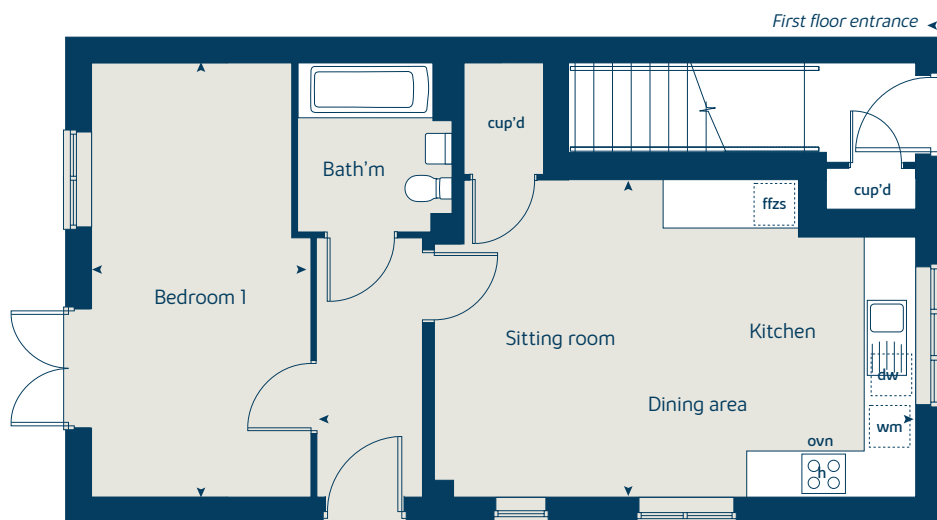
The illustrations shown are computer generated impressions of how the property may look and are indicative only. External details or finishes may vary on individual plots and homes may be built in either detached or attached styles depending on the development layout. Exact specifications, window styles and whether a property is left or right handed may differ from plot to plot. Please speak to our sales consultant for specific plot details.

Produced by the Vistry Group Design Studio.

When you have finished with this leaflet please recycle it.

DS09855 / 05.24

## Ground floor





# The Chaffinch II

1 bedroom home

[bovishomes.co.uk](http://bovishomes.co.uk)

**Bovis  
Homes** 

# The Chaffinch II

1 bedroom home

First floor	metres	feet / inches
Kitchen / dining / sitting	7.52 x 4.00	24' 8" x 13' 11"
Bedroom 1	5.45 x 2.70	17' 11" x 8' 10"

ovn	oven	ffzs	fridge freezer space
h	hob	cup'd	cupboard
ds	dishwasher space	◀ ▶	measuring points
ws	washing machine space		

## The Chaffinch II | Type A Type 2 Albany Park |

The floorplan has been produced for illustrative purposes only. Room sizes shown are between arrow points as indicated on plan. The dimensions have tolerances of + or -50mm and should not be used other than for general guidance. If specific dimensions are required, enquiries should be made to the sales consultant. The floor plans shown are not to scale. Measurements are based on the original drawings. Slight variations may occur during construction.

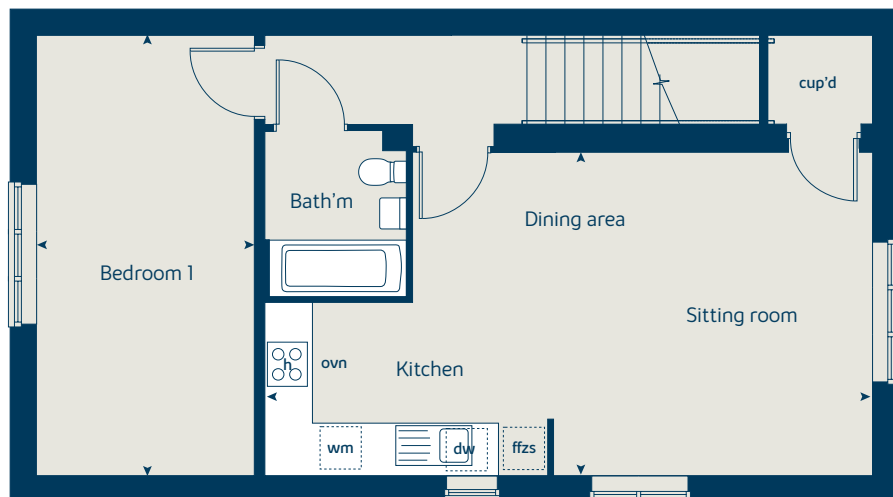
The illustrations shown are computer generated impressions of how the property may look and are indicative only. External details or finishes may vary on individual plots and homes may be built in either detached or attached styles depending on the development layout. Exact specifications, window styles and whether a property is left or right handed may differ from plot to plot. Please speak to our sales consultant for specific plot details.

Produced by the Vistry Group Design Studio.

When you have finished with this leaflet please recycle it.

DS09855 / 05.24

## First floor





# The Hazel

3 bedroom home

[bovishomes.co.uk](http://bovishomes.co.uk)

**Bovis  
Homes** 

# The Hazel

## 3 bedroom home

Ground floor	metres	feet / inches
Kitchen / dining room	5.19 x 2.99	17' 0" x 9' 10"
Sitting room	4.17 x 3.66	13' 8" x 12' 0"

### First floor

Bedroom 1	3.54 x 3.29	11' 7" x 10' 9"
Bedroom 2	2.95 x 2.74	9' 8" x 8' 11"
Bedroom 3	3.50 x 2.15	11' 5" x 7' 1"

ovn	oven	ffzs	fridge freezer space
h	hob	cup'd	cupboard
ds	dishwasher space	◀ ▶	measuring points
ws	washing machine space		

### The Hazel | X305 04 Albany Park |

The floorplan has been produced for illustrative purposes only. Room sizes shown are between arrow points as indicated on plan. The dimensions have tolerances of + or -50mm and should not be used other than for general guidance. If specific dimensions are required, enquiries should be made to the sales consultant. The floor plans shown are not to scale. Measurements are based on the original drawings. Slight variations may occur during construction.

The illustrations shown are computer generated impressions of how the property may look and are indicative only. External details or finishes may vary on individual plots and homes may be built in either detached or attached styles depending on the development layout. Exact specifications, window styles and whether a property is left or right handed may differ from plot to plot. Please speak to our sales consultant for specific plot details.

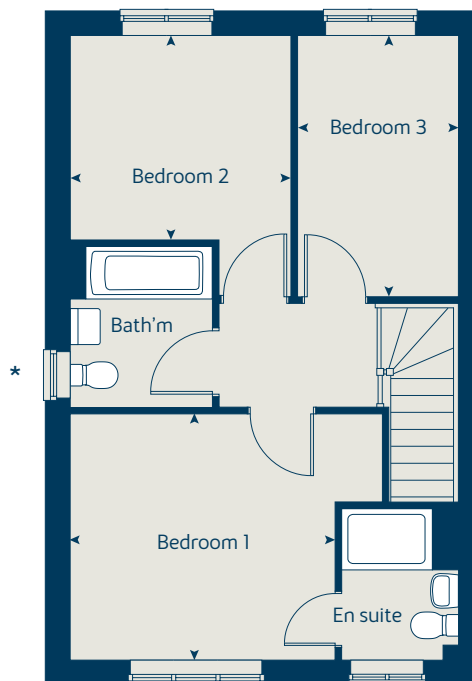
\* Windows apply to selected plots only. Please see sales consultant for further details.

Produced by the Vistry Group Design Studio.

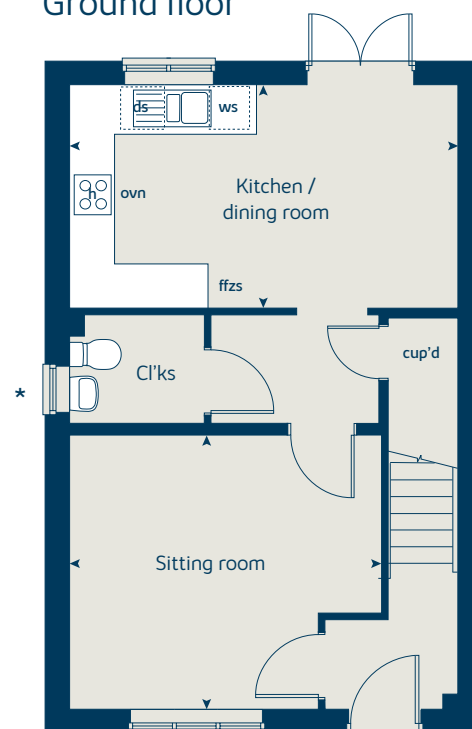
When you have finished with this leaflet please recycle it.

DS09855 / 05.24

### First floor



### Ground floor





# The Spruce

3 bedroom home

[bovishomes.co.uk](http://bovishomes.co.uk)

**Bovis  
Homes** 

# The Spruce

## 3 bedroom home

Ground floor	metres	feet / inches
Kitchen	3.16 x 2.69	10' 4" x 8' 10"
Dining area	3.14 x 2.36	10' 4" x 7' 9"
Sitting room	5.53 x 3.32	18' 2" x 10' 11"

First floor	metres	feet / inches
Bedroom 1	3.35 x 3.35	11' 0" x 11' 0"
Bedroom 2	3.60 x 3.27	11' 10" x 10' 9"
Bedroom 3	3.65 x 2.19	11' 11" x 7' 2"

ovn	oven	ffzs	fridge freezer space
h	hob	cup'd	cupboard
ds	dishwasher space	◀ ▶	measuring points
ws	washing machine space		

### The Spruce | X307 (IF) 02 |

The floorplan has been produced for illustrative purposes only. Room sizes shown are between arrow points as indicated on plan. The dimensions have tolerances of + or -50mm and should not be used other than for general guidance. If specific dimensions are required, enquiries should be made to the sales consultant. The floor plans shown are not to scale. Measurements are based on the original drawings. Slight variations may occur during construction.

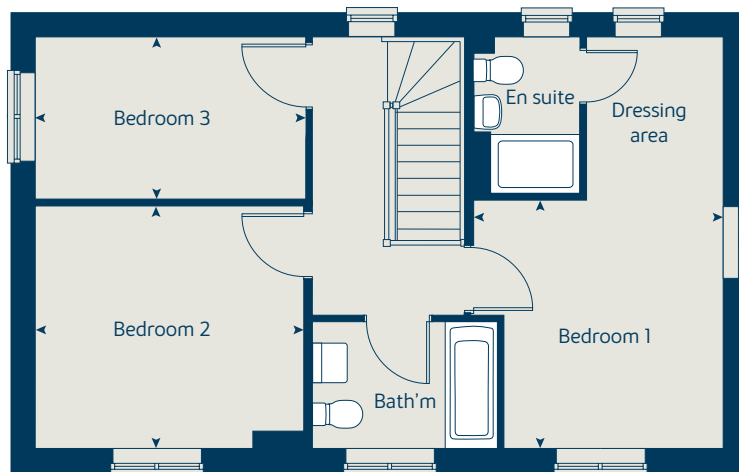
The illustrations shown are computer generated impressions of how the property may look and are indicative only. External details or finishes may vary on individual plots and homes may be built in either detached or attached styles depending on the development layout. Exact specifications, window styles and whether a property is left or right handed may differ from plot to plot. Please speak to our sales consultant for specific plot details.

Produced by the Vistry Group Design Studio.

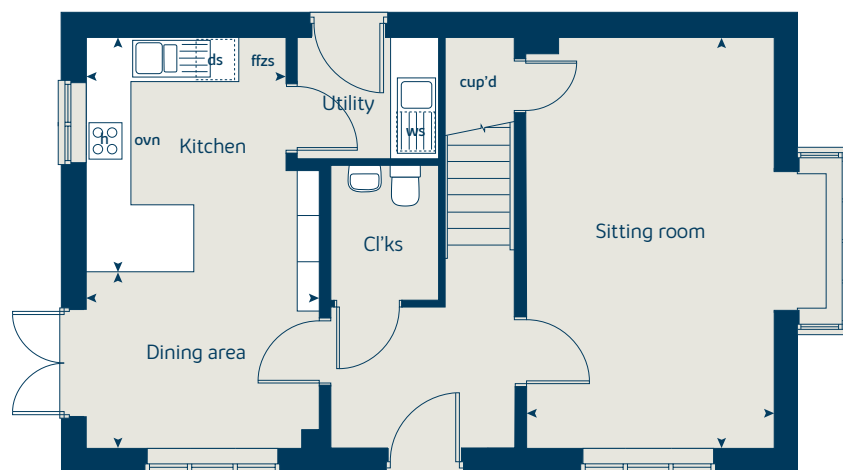
When you have finished with this leaflet please recycle it.

DS09855 / 05.24

### First floor



### Ground floor





# The Cypress

3 bedroom home

[bovishomes.co.uk](http://bovishomes.co.uk)

**Bovis  
Homes** 

# The Cypress

3 bedroom home

Ground floor	metres	feet / inches
Kitchen / dining area	5.52 x 3.12	18' 1" x 10' 2"
Sitting room	4.42 x 3.40	14' 6" x 11' 1"

## First floor

Bedroom 1	4.12 x 3.28	13' 5" x 10' 9"
Bedroom 2	3.68 x 3.28	12' 1" x 10' 9"
Bedroom 3	3.52 x 2.18	11' 7" x 7' 1"

ovn	oven	ffzs	fridge freezer space
h	hob	cup'd	cupboard
ds	dishwasher space	◀ ▶	measuring points
ws	washing machine space		

### The Cypress | X308 (IF) 02 vt Albany Park |

The floorplan has been produced for illustrative purposes only. Room sizes shown are between arrow points as indicated on plan. The dimensions have tolerances of + or -50mm and should not be used other than for general guidance. If specific dimensions are required, enquiries should be made to the sales consultant. The floor plans shown are not to scale. Measurements are based on the original drawings. Slight variations may occur during construction.

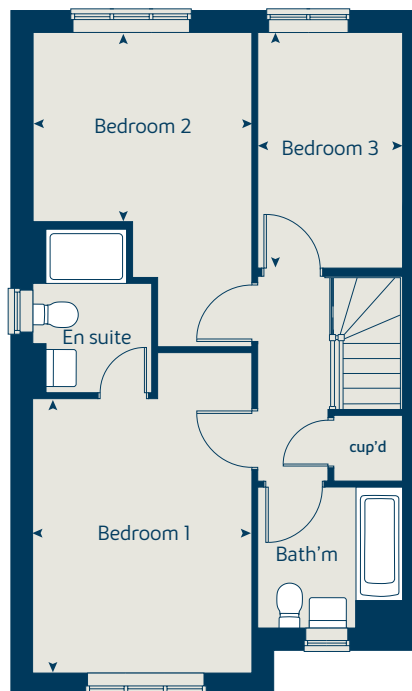
The illustrations shown are computer generated impressions of how the property may look and are indicative only. External details or finishes may vary on individual plots and homes may be built in either detached or attached styles depending on the development layout. Exact specifications, window styles and whether a property is left or right handed may differ from plot to plot. Please speak to our sales consultant for specific plot details.

Produced by the Vistry Group Design Studio.

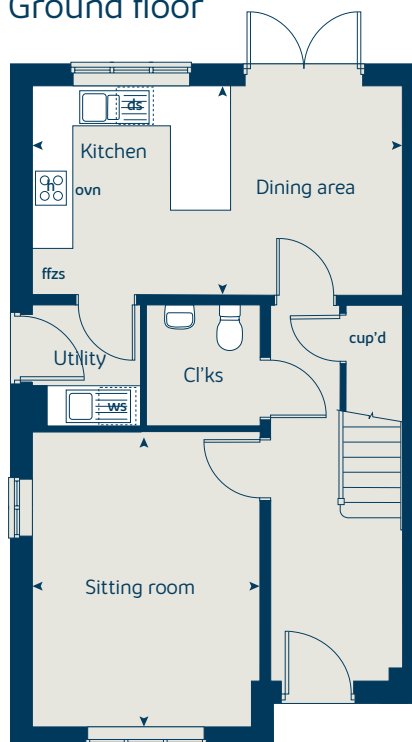
When you have finished with this leaflet please recycle it.

DS09855 / 05.24

## First floor



## Ground floor





# The Willow

4 bedroom home

[bovishomes.co.uk](http://bovishomes.co.uk)

**Bovis  
Homes** 

# The Willow

4 bedroom home

Ground floor	metres	feet / inches
Kitchen / dining room	5.97 x 3.77	19' 7" x 12' 4"
Sitting room	4.42 x 3.23	14' 6" x 10' 7"

First floor	metres	feet / inches
Bedroom 2	4.89 x 3.34	16' 1" x 11' 0"
Bedroom 3	4.06 x 3.34	13' 4" x 11' 0"
Bedroom 4	2.93 x 2.56	9' 7" x 8' 5"

Second floor	metres	feet / inches
Bedroom 1	5.65 x 4.36	18' 6" x 14' 3"

ovn	oven	ffzr	fridge freezer
h	hob	cup'd	cupboard
ds	dishwasher space	◀ ▶	measuring points
ws	washing machine space		

## The Willow | X411 02 vt Albany Park |

The floorplan has been produced for illustrative purposes only. Room sizes shown are between arrow points as indicated on plan. The dimensions have tolerances of + or -50mm and should not be used other than for general guidance. If specific dimensions are required, enquiries should be made to the sales consultant. The floor plans shown are not to scale. Measurements are based on the original drawings. Slight variations may occur during construction.

The illustrations shown are computer generated impressions of how the property may look and are indicative only. External details or finishes may vary on individual plots and homes may be built in either detached or attached styles depending on the development layout. Exact specifications, window styles and whether a property is left or right handed may differ from plot to plot. Please speak to our sales consultant for specific plot details.

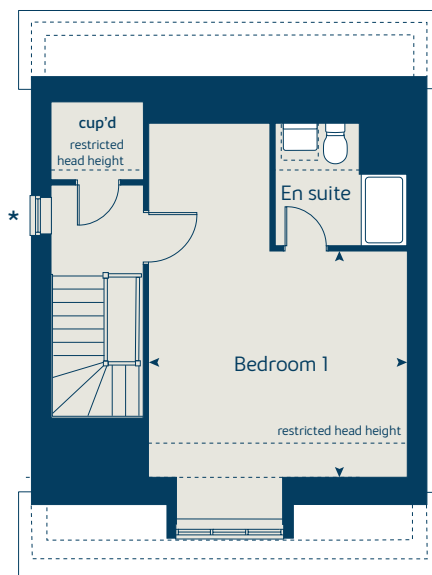
\* Windows apply to selected plots only. Please see sales consultant for further details.

Produced by the Vistry Group Design Studio.

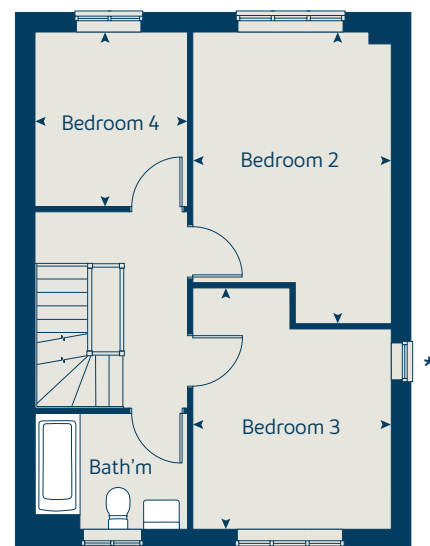
When you have finished with this leaflet please recycle it.

DS09855 / 05.24

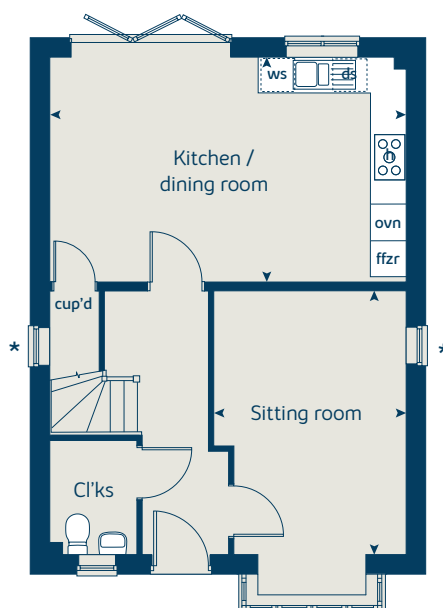
## Second floor



## First floor



## Ground floor





# The Chestnut

4 bedroom home

[bovishomes.co.uk](http://bovishomes.co.uk)

**Bovis  
Homes** 

# The Chestnut

## 4 bedroom home

Ground floor	metres	feet / inches
Kitchen	4.03 x 3.05	13' 3" x 10' 0"
Dining / family area	4.60 x 2.83	15' 1" x 9' 3"
Sitting room	4.98 x 3.41	16' 4" x 11' 2"
Study	3.41 x 1.81	11' 2" x 5' 11"

### First floor

Bedroom 1	4.49 x 3.24	14' 9" x 10' 7"
Bedroom 2	3.44 x 3.37	11' 3" x 11' 1"
Bedroom 3	3.44 x 2.33	11' 3" x 7' 7"
Bedroom 4	3.21 x 2.35	10' 6" x 7' 9"

ovn	oven	w	wardrobe
h	hob	ldr	larder
ds	dishwasher space	cup'd	cupboard
ws	washing machine space	◄ ►	measuring points
ffzr	fridge freezer		

### The Chestnut | X413 02 vt Albany Park |

The floorplan has been produced for illustrative purposes only. Room sizes shown are between arrow points as indicated on plan. The dimensions have tolerances of + or -50mm and should not be used other than for general guidance. If specific dimensions are required, enquiries should be made to the sales consultant. The floor plans shown are not to scale. Measurements are based on the original drawings. Slight variations may occur during construction.

The illustrations shown are computer generated impressions of how the property may look and are indicative only. External details or finishes may vary on individual plots and homes may be built in either detached or attached styles depending on the development layout. Exact specifications, window styles and whether a property is left or right handed may differ from plot to plot. Please speak to our sales consultant for specific plot details.

① Alternative layout to selected plots only. Please see sales consultant for further details.

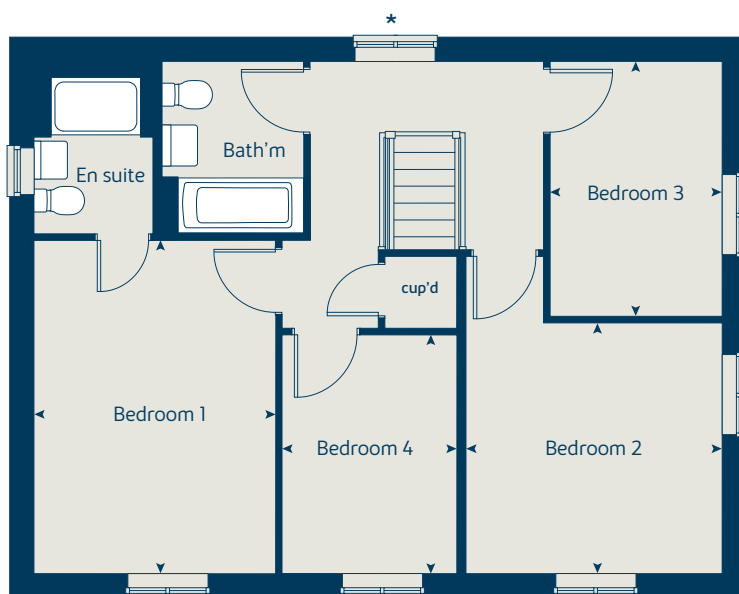
\* Window omitted to selected plots only. Please see sales consultant for further details.

Produced by the Vistry Group Design Studio.

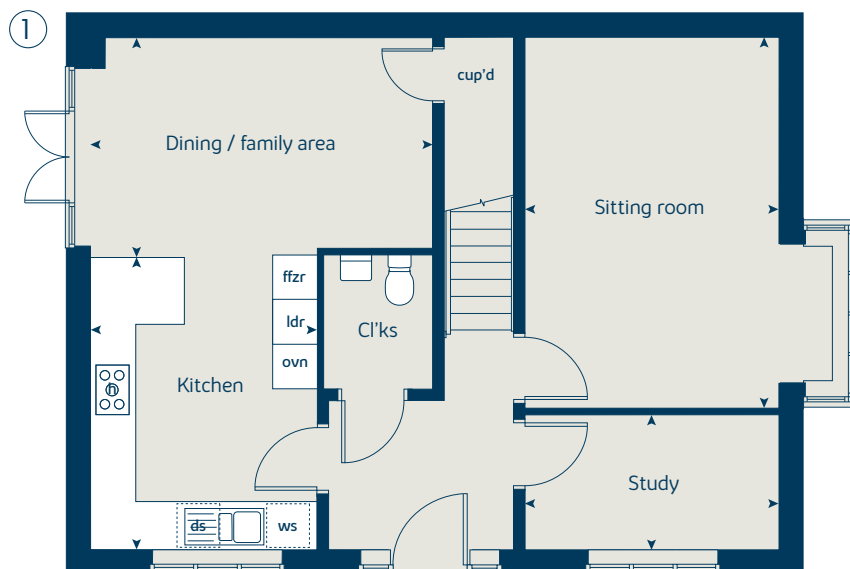
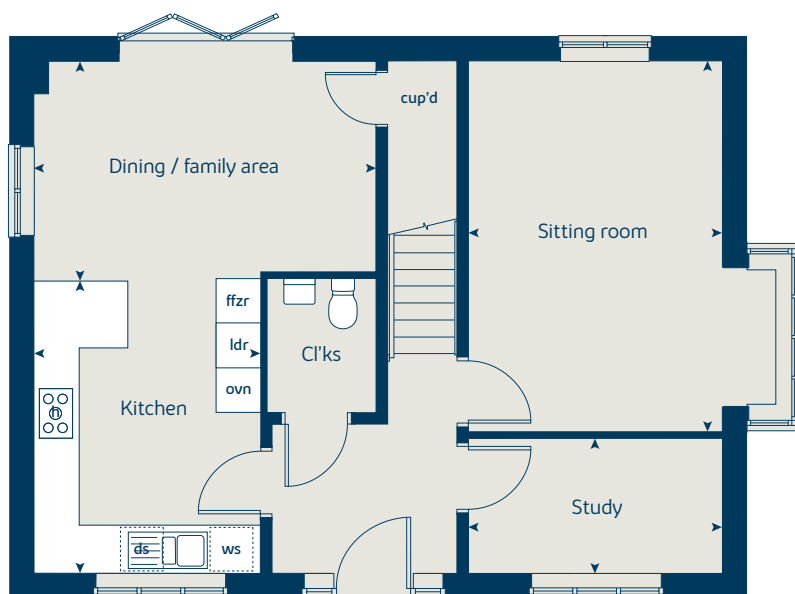
When you have finished with this leaflet please recycle it.

DS09855 / 05.24

### First floor



### Ground floor





# The Goldfinch

4 bedroom home

[bovishomes.co.uk](http://bovishomes.co.uk)

**Bovis  
Homes** 

# The Goldfinch

## 4 bedroom home

Ground floor	metres	feet / inches
Kitchen	3.50 x 2.55	11' 6" x 8' 4"
Dining room	3.50 x 2.87	11' 6" x 9' 5"
Sitting room	5.41 x 4.15	17' 9" x 13' 8"

First floor	metres	feet / inches
Bedroom 1	3.94 x 3.51	12' 11" x 11' 6"
Bedroom 2	3.51 x 3.13	11' 6" x 10' 3"
Study	3.51 x 2.22	11' 6" x 7' 3"

Second floor	metres	feet / inches
Bedroom 3	3.58 x 3.49	11' 9" x 11' 6"
Bedroom 4	3.58 x 3.49	11' 9" x 11' 6"

ovn	oven	ffzr	fridge freezer
h	hob	ldr	larder
ds	dishwasher space	cup'd	cupboard
ws	washing machine space	< >	measuring points

### The Goldfinch | Type R Albany Park |

The floorplan has been produced for illustrative purposes only. Room sizes shown are between arrow points as indicated on plan. The dimensions have tolerances of + or -50mm and should not be used other than for general guidance. If specific dimensions are required, enquiries should be made to the sales consultant. The floor plans shown are not to scale. Measurements are based on the original drawings. Slight variations may occur during construction.

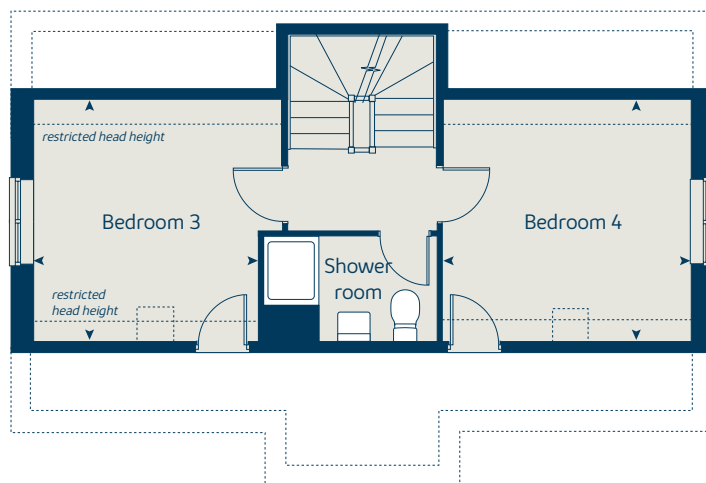
The illustrations shown are computer generated impressions of how the property may look and are indicative only. External details or finishes may vary on individual plots and homes may be built in either detached or attached styles depending on the development layout. Exact specifications, window styles and whether a property is left or right handed may differ from plot to plot. Please speak to our sales consultant for specific plot details.

Produced by the Vistry Group Design Studio.

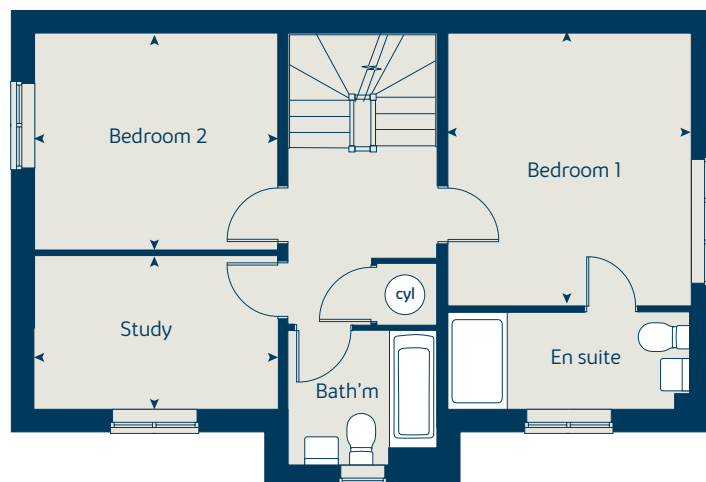
When you have finished with this leaflet please recycle it.

DS09855 / 05.24

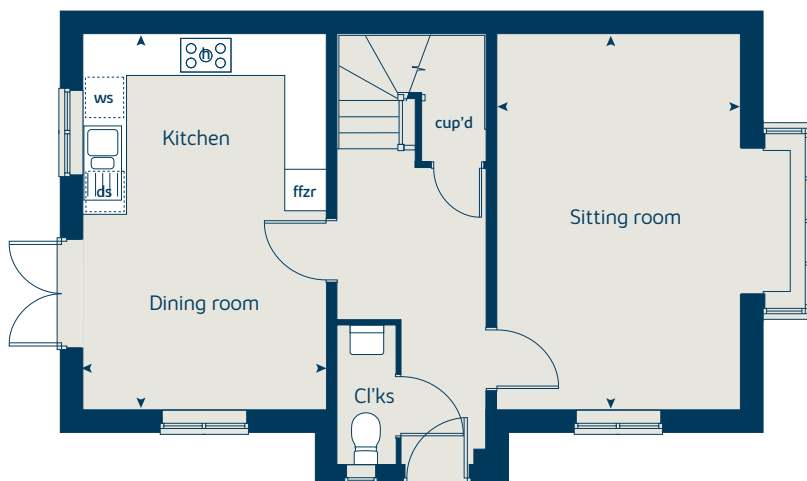
## Second floor



## First floor



## Ground floor





# The Juniper

4 bedroom home

[bovishomes.co.uk](http://bovishomes.co.uk)

**Bovis  
Homes** 

# The Juniper

4 bedroom home

Ground floor	metres	feet / inches
Kitchen / dining / family area	7.21 x 3.52	23' 8" x 11' 7"
Sitting room	4.55 x 3.04	14' 11" x 10' 0"
Study	2.34 x 1.87	7' 8" x 6' 1"

First floor	metres	feet / inches
Bedroom 1	3.55 x 3.47	11' 8" x 11' 5"
Bedroom 2	2.97 x 2.84	9' 9" x 9' 4"
Bedroom 3	3.52 x 2.38	11' 7" x 7' 10"
Bedroom 4	3.61 x 2.38	11' 10" x 7' 10"

ovn	oven	ffzr	fridge freezer
h	hob	ldr	larder
ds	dishwasher space	cup'd	cupboard
ws	washing machine space	< >	measuring points

## The Juniper | X412 02 Albany Park |

The floorplan has been produced for illustrative purposes only. Room sizes shown are between arrow points as indicated on plan. The dimensions have tolerances of + or -50mm and should not be used other than for general guidance. If specific dimensions are required, enquiries should be made to the sales consultant. The floor plans shown are not to scale. Measurements are based on the original drawings. Slight variations may occur during construction.

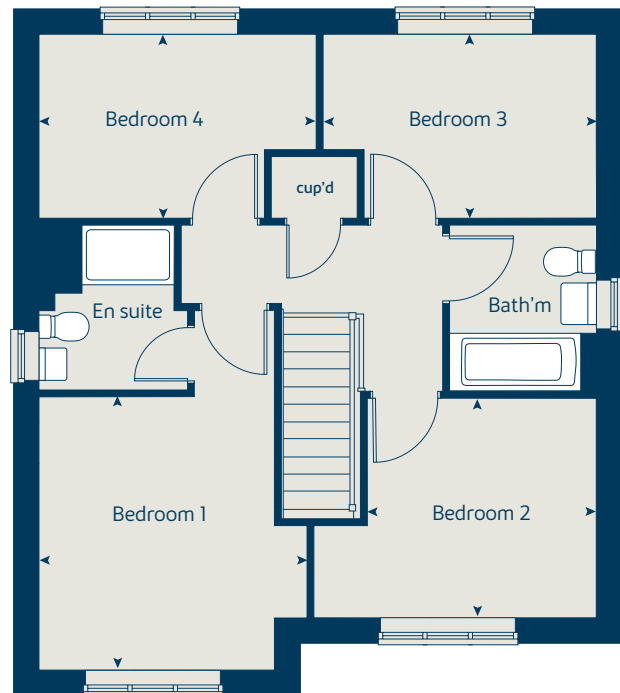
The illustrations shown are computer generated impressions of how the property may look and are indicative only. External details or finishes may vary on individual plots and homes may be built in either detached or attached styles depending on the development layout. Exact specifications, window styles and whether a property is left or right handed may differ from plot to plot. Please speak to our sales consultant for specific plot details.

Produced by the Vistry Group Design Studio.

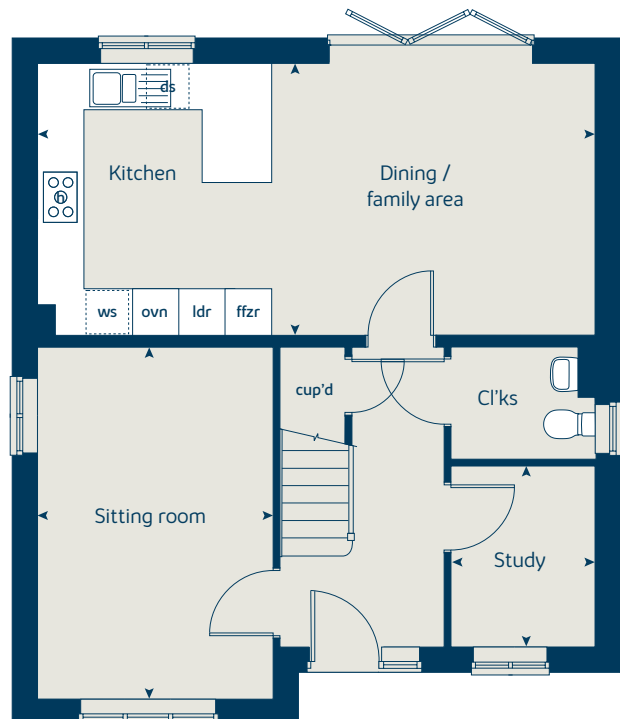
When you have finished with this leaflet please recycle it.

DS09855 / 05.24

## First floor



## Ground floor





# The Mulberry

4 bedroom home

[bovishomes.co.uk](http://bovishomes.co.uk)

**Bovis  
Homes** 

# The Mulberry

## 4 bedroom home

Ground floor	metres	feet / inches
Kitchen / dining area	8.16 x 2.92	26' 10" x 9' 7"
Sitting room	4.70 x 3.72	15' 5" x 12' 3"
Study	3.45 x 2.36	11' 3" x 7' 8"

### First floor

Bedroom 1	4.80 x 3.74	15' 9" x 12' 3"
Bedroom 2	3.45 x 3.68	12' 0" x 11' 3"
Bedroom 3	4.32 x 2.94	14' 2" x 9' 8"
Bedroom 4	3.77 x 2.59	12' 4" x 8' 5"

ovn	oven	ffzr	fridge freezer
h	hob	cup'd	cupboard
ds	dishwasher space	w	wardrobe
ws	washing machine space	◀ ▶	measuring points

### The Mulberry | X418 02 (IF) vt Albany Park |

The floorplan has been produced for illustrative purposes only. Room sizes shown are between arrow points as indicated on plan. The dimensions have tolerances of + or -50mm and should not be used other than for general guidance. If specific dimensions are required, enquiries should be made to the sales consultant. The floor plans shown are not to scale. Measurements are based on the original drawings. Slight variations may occur during construction.

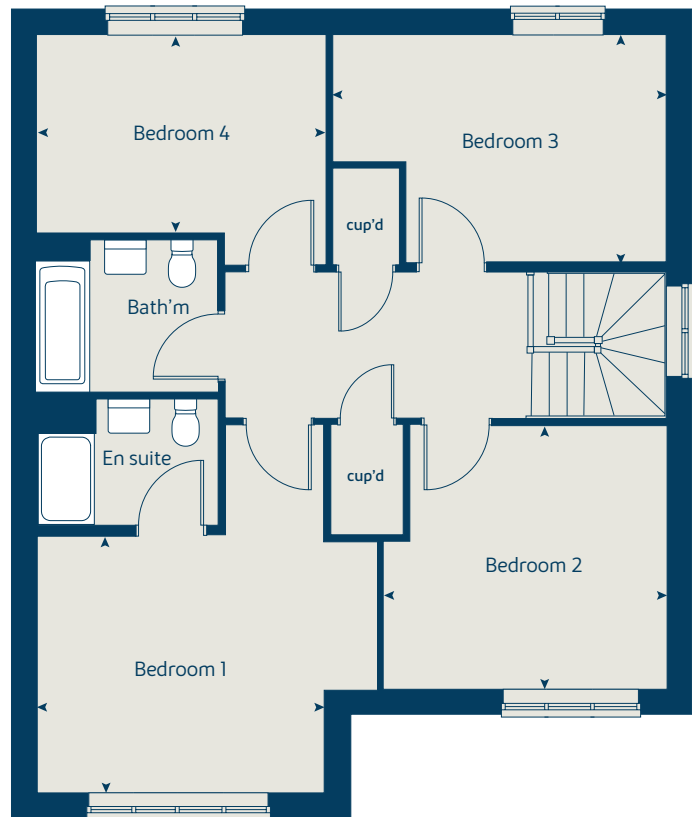
The illustrations shown are computer generated impressions of how the property may look and are indicative only. External details or finishes may vary on individual plots and homes may be built in either detached or attached styles depending on the development layout. Exact specifications, window styles and whether a property is left or right handed may differ from plot to plot. Please speak to our sales consultant for specific plot details.

Produced by the Vistry Group Design Studio.

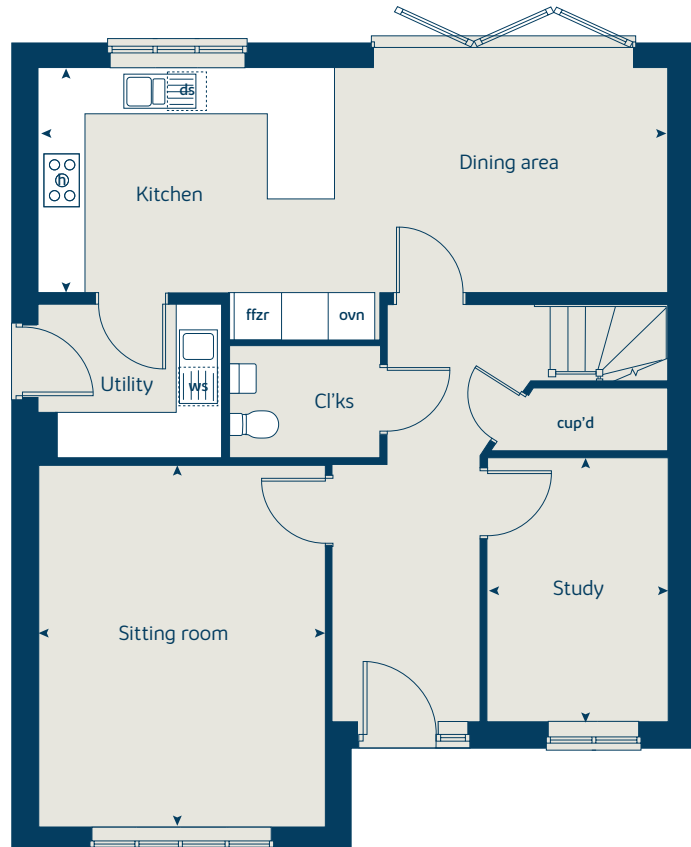
When you have finished with this leaflet please recycle it.

DS09855 / 05.24

### First floor



### Ground floor





# The Yew

5 bedroom home

[bovishomes.co.uk](http://bovishomes.co.uk)

**Bovis  
Homes** 

# The Yew

## 5 bedroom home

Ground floor	metres	feet / inches
Kitchen	3.71 x 3.17	12' 2" x 10' 5"
Family / dining area	4.74 x 3.17	15' 7" x 10' 5"
Sitting room	4.69 x 3.17	15' 5" x 10' 5"
Study	3.17 x 1.78	10' 5" x 5' 9"

### First floor

Bedroom 1	3.73 x 3.48	12' 3" x 11' 5"
Bedroom 3	4.20 x 3.23	13' 10" x 10' 7"
Bedroom 5	2.92 x 2.29	9' 6" x 7' 5"

### Second floor

Bedroom 2	5.04 x 3.24	16' 6" x 10' 7"
Bedroom 4	3.73 x 2.86	12' 3" x 9' 5"

ovn	oven	ldr	larder
h	hob	cup'd	cupboard
ds	dishwasher space	cyl	hot water cylinder
ws	washing machine space	< >	measuring points
ffzr	fridge freezer		

### The Yew | X519 02 vt Albany Park |

The floorplan has been produced for illustrative purposes only. Room sizes shown are between arrow points as indicated on plan. The dimensions have tolerances of + or -50mm and should not be used other than for general guidance. If specific dimensions are required, enquiries should be made to the sales consultant. The floor plans shown are not to scale. Measurements are based on the original drawings. Slight variations may occur during construction.

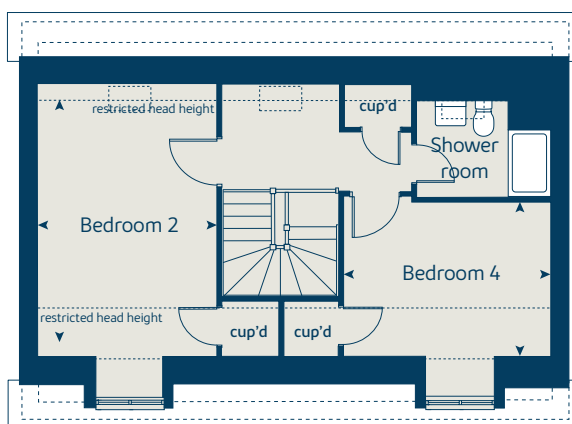
The illustrations shown are computer generated impressions of how the property may look and are indicative only. External details or finishes may vary on individual plots and homes may be built in either detached or attached styles depending on the development layout. Exact specifications, window styles and whether a property is left or right handed may differ from plot to plot. Please speak to our sales consultant for specific plot details.

Produced by the Vistry Group Design Studio.

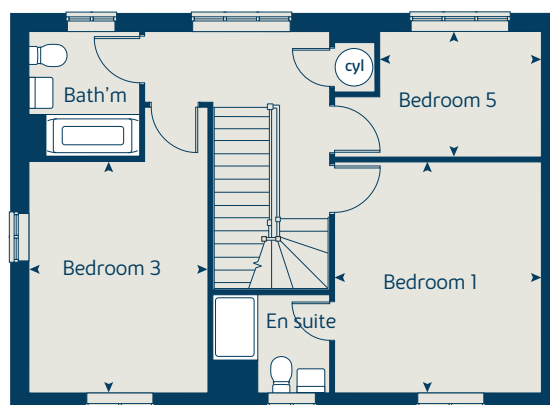
When you have finished with this leaflet please recycle it.

DS09855 / 05.24

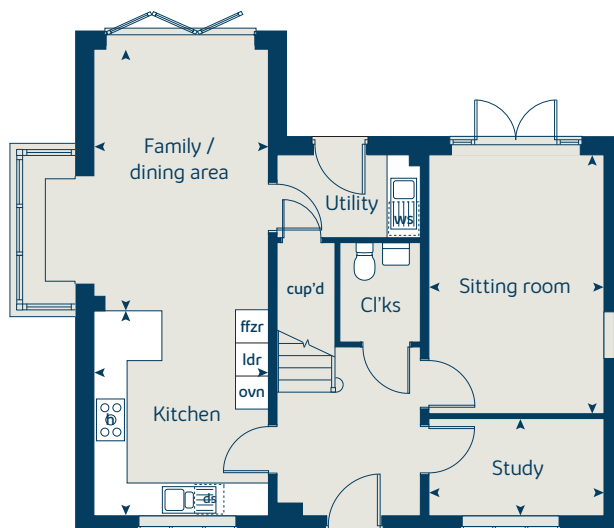
## Second floor



## First floor



## Ground floor





# The Lime

5 bedroom home

[bovishomes.co.uk](http://bovishomes.co.uk)

**Bovis  
Homes** 

# The Lime

## 5 bedroom home

Ground floor	metres	feet / inches
Kitchen	4.24 x 3.93	13' 10" x 12' 10"
Family / dining area	3.77 x 3.58	12' 4" x 11' 8"
Sitting room	5.39 x 3.86	17' 8" x 12' 7"
Dining room	3.86 x 2.78	12' 7" x 9' 1"
Study	3.58 x 2.55	11' 8" x 8' 4"

### First floor

Bedroom 1	4.05 x 3.75	13' 4" x 12' 3"
Bedroom 2	4.05 x 3.52	13' 4" x 11' 7"
Bedroom 3	3.28 x 3.23	10' 9" x 10' 7"
Bedroom 4	3.54 x 2.84	11' 8" x 9' 4"
Bedroom 5	2.88 x 2.66	9' 5" x 8' 8"

ovn	oven	ffzr	fridge freezer
h	hob	cyl	hot water cylinder
dw	dishwasher	cup'd	cupboard
ws	washing machine space	◀ ▶	measuring points

### The Lime | X520 (F) 02 vt Albany Park |

The floorplan has been produced for illustrative purposes only. Room sizes shown are between arrow points as indicated on plan. The dimensions have tolerances of + or -50mm and should not be used other than for general guidance. If specific dimensions are required, enquiries should be made to the sales consultant. The floor plans shown are not to scale. Measurements are based on the original drawings. Slight variations may occur during construction.

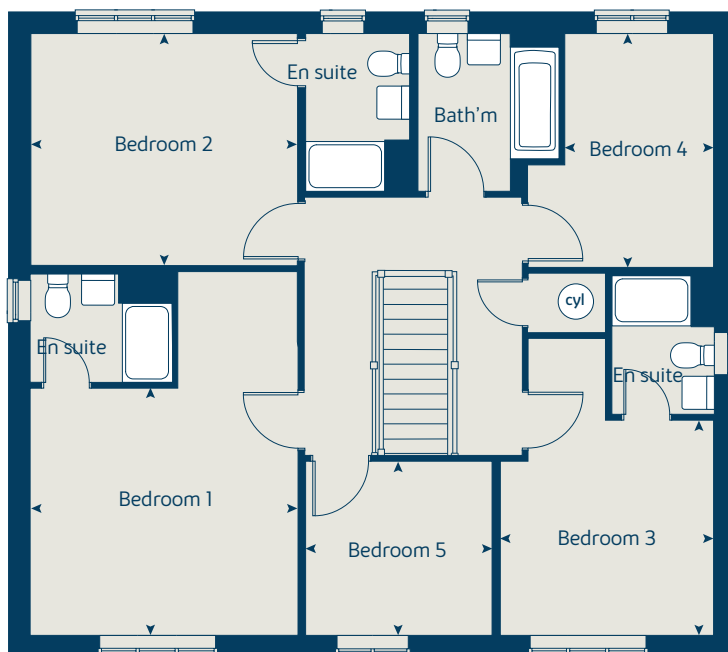
The illustrations shown are computer generated impressions of how the property may look and are indicative only. External details or finishes may vary on individual plots and homes may be built in either detached or attached styles depending on the development layout. Exact specifications, window styles and whether a property is left or right handed may differ from plot to plot. Please speak to our sales consultant for specific plot details.

Produced by the Vistry Group Design Studio.

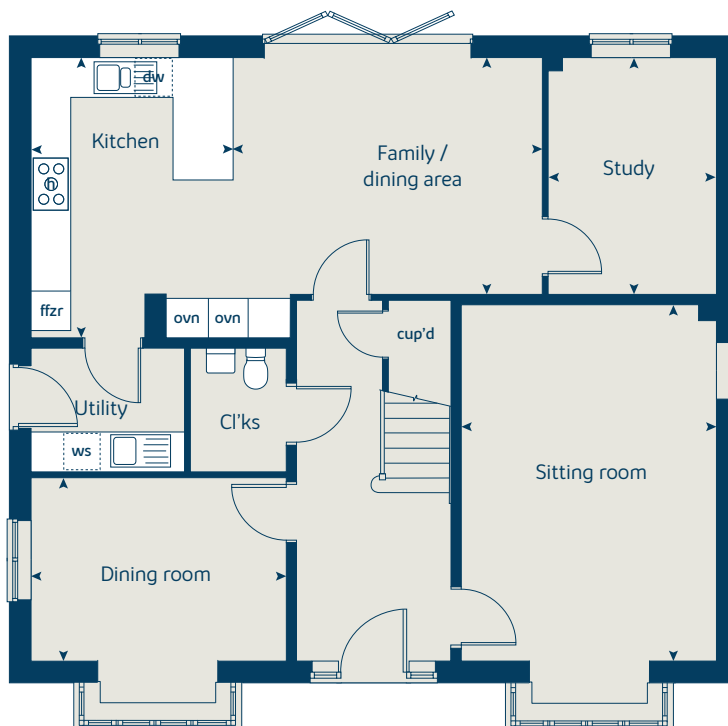
When you have finished with this leaflet please recycle it.

DS09855 / 05.24

## First floor



## Ground floor





# Albany Park

Church Crookham

Specification

[bovishomes.co.uk](http://bovishomes.co.uk)

**Bovis  
Homes** 

# Albany Park

## Church Crookham

Use this guide to see what features are included in your new home. Your sales consultant will be happy to discuss the **Select** range of extras available.

This specification indicates, by means of a dot (■), the items that are included within the home. If there is no dot in a column, the item is not included. Any item not expressly listed or indicated within this specification is excluded from the standard build. For information on the Select upgrade options available depending on build stage, please speak with a sales consultant.



### Kitchen

- 1 bedroom
- The Robin
- The Chaffinch
- The Robin II
- The Chaffinch II
- 3 bedroom
- The Hazel
- The Cypress
- The Spruce
- 4 bedroom
- The Juniper
- The Chestnut
- The Mulberry
- The Goldfinch
- The Willow
- 5 bedroom
- The Yew
- The Lime

Choice of Standard fitted kitchen (doors & worktops)	■	■	■	■	■	■	■	■	■	■	■	■		
Choice of Premium fitted kitchen (doors & worktops)													■	■
Stainless steel sink and drainer (single and a half bowl) with chrome mixer tap	■	■	■	■	■	■	■	■	■	■	■	■	■	■
Stainless steel sink and drainer (single bowl) with chrome mixer tap in utility						■	■						■	■
Indesit hob (60cm) with built-in single underoven, with stainless steel splashback and curved glass chimney hood	■	■	■	■	■	■	■							
Hotpoint hob (75 cm) with built-in double high level oven, with glass splashback and curved glass chimney hood								■	■	■	■	■		
Bosch (75cm) hob with built-in double high level oven, with glass splashback and stainless steel pyramid chimney hood													■	
Bosch (75cm) hob with two built-in single ovens at high level, with glass splashback and stainless steel chimney hood														■
Pendant light fitting	■	■	■	■	■	■	■	■	■	■	■	■	■	■
Pre-wired for under-unit lighting option	■	■	■	■	■	■	■	■	■	■	■	■		
LED under-unit flexible strip lighting													■	■
Fridge / freezer space	■	■	■	■	■	■	■							
Indesit Integrated 50 / 50 fridge freezer								■	■	■	■	■	■	■
Space for integrated dishwasher with plumbing and electrics					■	■	■	■	■	■	■	■		
Indesit Integrated dishwasher													■	■
Space for washing machine with plumbing and electrics in kitchen	■	■	■	■	■			■	■	■	■	■		
Space for washing machine with plumbing and electrics in utility						■	■						■	■

### Bathrooms and en suite(s)

Ideal Standard contemporary white Concept Air sanitaryware	■	■	■	■	■	■	■	■	■	■	■	■	■	■
Ideal Standard close coupled WC to cloakroom					■	■	■	■	■	■	■	■	■	■
Handheld hair wash attachment					■	■	■	■	■	■	■	■	■	■
Ideal Standard low profile shower tray with glass enclosure to bedroom 1 en suite					■	■	■	■	■	■	■	■	■	■
Second shower en suite to selected bedrooms													■	■
Choice of standard Porcelanosa wall tiling (splashback, 450mm over bath, and full-height to shower cubicle)*					■	■	■	■	■	■	■	■		
Choice of standard Porcelanosa wall tiling (half-height to walls with fitted sanitary ware, half-height over bath, and full-height to shower cubicle)*													■	■
Chrome bezel LED bulkhead to bathroom and en suite(s)	■	■	■	■	■	■	■	■	■	■	■	■	■	■
Chrome towel warmer in bathroom and en suite(s)	■	■	■	■				■	■	■	■	■	■	■
Water waste heat recovery system	■	■	■	■	■	■	■	■	■	■	■	■	■	■

### Doors and Windows

- 1 bedroom
- The Robin
- The Chaffinch
- The Robin II
- The Chaffinch II
- 3 bedroom
- The Hazel
- The Cypress
- The Spruce
- 4 bedroom
- The Juniper
- The Chestnut
- The Mulberry
- The Goldfinch
- The Willow
- 5 bedroom
- The Yew
- The Lime

Front door with multi-point security locking system and security chain	■	■	■	■	■	■	■	■	■	■	■	■	■	■
Chrome plated front door numerals	■	■	■	■	■	■	■	■	■	■	■	■	■	■
PVCu double glazing to windows	■	■	■	■	■	■	■	■	■	■	■	■	■	■
Double glazed PVCu French doors (where applicable)	■	■	■	■	■	■	■							
Powder coated aluminium double glazed bi-fold doors								■	■	■	■	■	■	■
French doors to sitting room													■	■
Internal cottage style pre-primed doors with brass satin finish handles	■	■	■	■	■	■	■	■	■	■	■	■	■	■
Paving outside French / bi-fold door and path to garage personnel door (where applicable)	■	■	■	■	■	■	■	■	■	■	■	■	■	■

### General

PV solar panels	■	■	■	■	■	■	■	■	■	■	■	■	■	■
White painted walls and smooth white ceilings	■	■	■	■	■	■	■	■	■	■	■	■	■	■
Combined usb / double sockets in kitchen and bedroom 1	■	■	■	■	■	■	■	■	■	■	■	■	■	■
Multi-media point in living room	■	■	■	■	■	■	■	■	■	■	■	■	■	■
TV point to bedroom 1 and family room (where applicable)	■	■	■	■	■	■	■	■	■	■	■	■	■	■
Master telephone socket to sitting room and study (where applicable)	■	■	■	■	■	■	■	■	■	■	■	■	■	■
Gas central heating with wall mounted combi-boiler, programme selector and room thermostat(s)	■	■	■	■	■	■	■	■	■	■	■	■		
Gas central heating with wall mounted boiler and separate hot water cylinder, programme selector and room thermostat(s)													■	■
Thermostatic valves to all radiators (with the exception of rooms with separate thermostat control)	■	■	■	■	■	■	■	■	■	■	■	■	■	■
Fitted external tap					■	■	■	■	■	■	■	■	■	■
External light fitted to front porch and wiring for external light to rear door					■	■	■	■	■	■	■	■	■	■
Mains wired smoke detectors with battery back-up	■	■	■	■	■	■	■	■	■	■	■	■	■	■
Battery powered Carbon Monoxide detector (wall mounted) to be provided for each floor	■	■	■	■	■	■	■	■	■	■	■	■	■	■
Power and lighting to 'on plot' garage (where applicable)					■	■	■	■	■	■	■	■	■	■
Enclosed fenced rear garden, and garden gate (where applicable)	■	■	■	■	■	■	■	■	■	■	■	■	■	■
Landscaped front gardens	■	■	■	■	■	■	■	■	■	■	■	■	■	■
NHBC Buildmark cover	■	■	■	■	■	■	■	■	■	■	■	■	■	■
First two years' customer service support from Bovis Homes	■	■	■	■	■	■	■	■	■	■	■	■	■	■

■ Fitted as standard - included in the property  
 \* Subject to stage of construction

## So much choice...

Part of the excitement of buying a new home is the thrill of being the first person to live in the property and having a brand new contemporary kitchen and modern bathroom. Our premium brand partners ensure that all of our fixtures and fittings comply with the latest Government building regulations and only branded appliances are installed in your new home.

Once you know what specification comes included, you'll have a choice from our specially selected tiles for your kitchen and bathrooms, as well as kitchen worktops and cupboard doors. You can then use the Bovis Homes **Select** brochure to add the finishing touches to your home to make it extra special for you!

From personalising your bathrooms with stunning ceramics, or adding smooth sliding wardrobes to your master bedroom, there are a wide range of additional options and upgrades available.

The availability of items is subject to the stage of build, and can vary by development and house type. Our sales consultants will be happy to provide guidance.



The specification shown is correct at the time of production. Bovis Homes is continually reviewing and updating the specification on all house / apartment types and therefore reserves the right to change specification details. Photographs depict typical Bovis Homes interiors and may include optional upgrades. For full details regarding the current specification and finishes, please speak to our sales consultant.

Produced by the Vistry Group Design Studio.

When you have finished with this leaflet please recycle it.

DS09855 / 05.24

**Bovis  
Homes** 