



The Hazel

3 bedroom home



THE GATEWAY
BEXHILL-ON-SEA

bovishomes.co.uk

**Bovis
Homes** 

The Hazel

3 bedroom home

Ground floor	metres	feet / inches
Kitchen / dining room	5.25 x 2.98	17' 3" x 9' 9"
Sitting room	4.17 x 3.66	13' 8" x 12' 0"

First floor

Bedroom 1	3.54 x 3.29	11' 7" x 10' 9"
Bedroom 2	2.95 x 2.72	9' 8" x 8' 11"
Bedroom 3	3.48 x 2.21	11' 5" x 7' 3"

ovn	oven	ffzs	fridge freezer space
h	hob	cup'd	cupboard
ds	dishwasher space	◀ ▶	measuring points
ws	washing machine space		

The Hazel | The Gateway |

The floorplan has been produced for illustrative purposes only. Room sizes shown are between arrow points as indicated on plan. The dimensions have tolerances of + or -50mm and should not be used other than for general guidance. If specific dimensions are required, enquiries should be made to the sales consultant. The floor plans shown are not to scale. Measurements are based on the original drawings. Slight variations may occur during construction.

The illustrations shown are computer generated impressions of how the property may look and are indicative only. External details or finishes may vary on individual plots and homes may be built in either detached or attached styles depending on the development layout. Exact specifications, window styles and whether a property is left or right handed may differ from plot to plot. Please speak to our sales consultant for specific plot details.

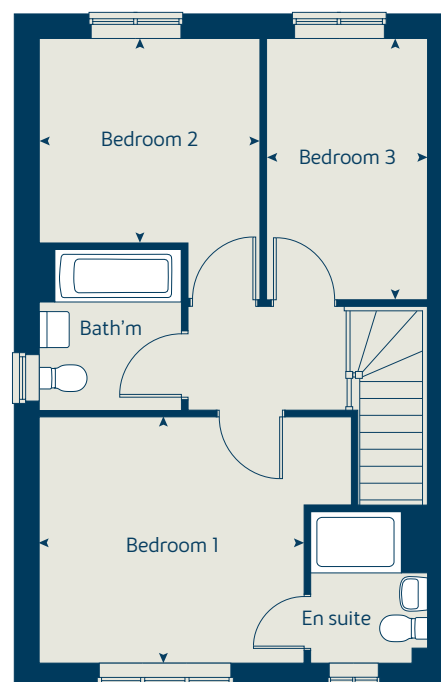
Wardrobe as standard specification if building to NDSS.

Produced by the Vistry Group Design Studio.

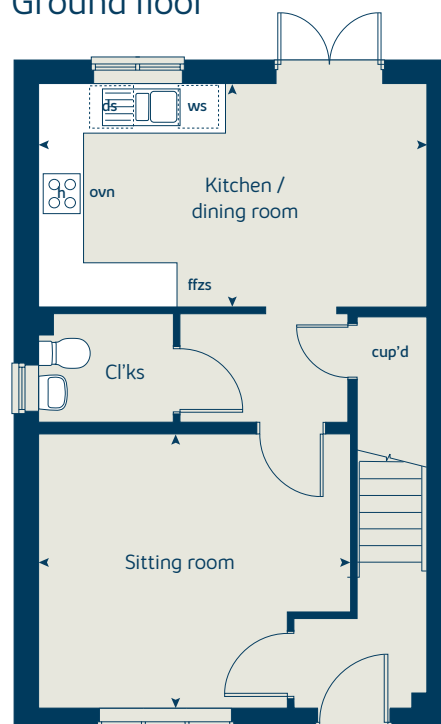
When you have finished with this leaflet please recycle it.

EBEXH DS14799 / 01.26

First floor



Ground floor





The Beech

3 bedroom home



THE GATEWAY
BEXHILL-ON-SEA

bovishomes.co.uk

**Bovis
Homes** 

The Beech

3 bedroom home

Ground floor	metres	feet / inches
Kitchen / dining room	4.74 x 3.55	15' 7" x 11' 8"
Sitting room	3.72 x 4.51	12' 2" x 14' 10"

First floor	metres	feet / inches
Bedroom 2	4.74 x 3.58	15' 7" x 11' 9"
Bedroom 3	3.39 x 2.49	11' 1" x 8' 2"

Second floor	metres	feet / inches
Bedroom 1	3.62 x 3.31	11' 10" x 10' 10"

ovn	oven	ffzs	fridge freezer space
h	hob	cup'd	cupboard
ds	dishwasher space	◀ ▶	measuring points
ws	washing machine space		

The Beech | The Gateway |

The floorplan has been produced for illustrative purposes only. Room sizes shown are between arrow points as indicated on plan. The dimensions have tolerances of + or -50mm and should not be used other than for general guidance. If specific dimensions are required, enquiries should be made to the sales consultant. The floor plans shown are not to scale. Measurements are based on the original drawings. Slight variations may occur during construction.

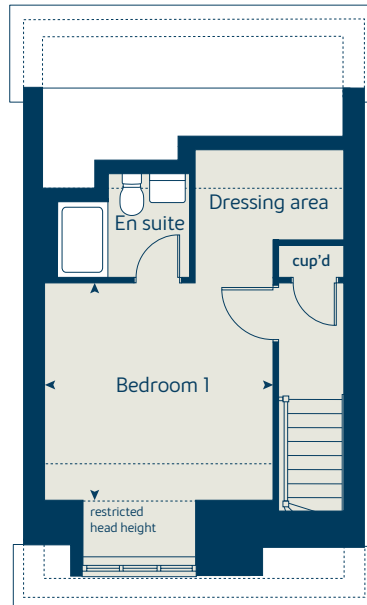
The illustrations shown are computer generated impressions of how the property may look and are indicative only. External details or finishes may vary on individual plots and homes may be built in either detached or attached styles depending on the development layout. Exact specifications, window styles and whether a property is left or right handed may differ from plot to plot. Please speak to our sales consultant for specific plot details.

Produced by the Vistry Group Design Studio.

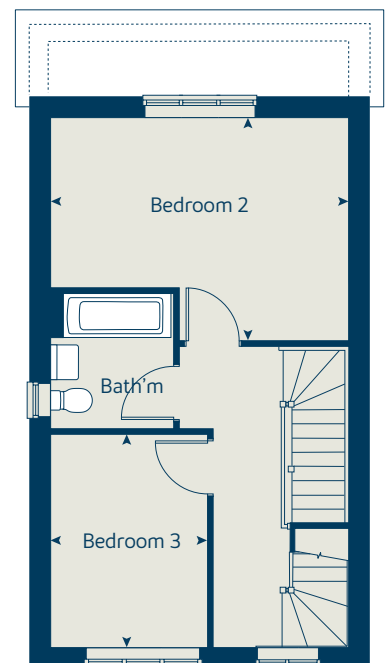
When you have finished with this leaflet please recycle it.

EBEXH DS14799 / 01.26

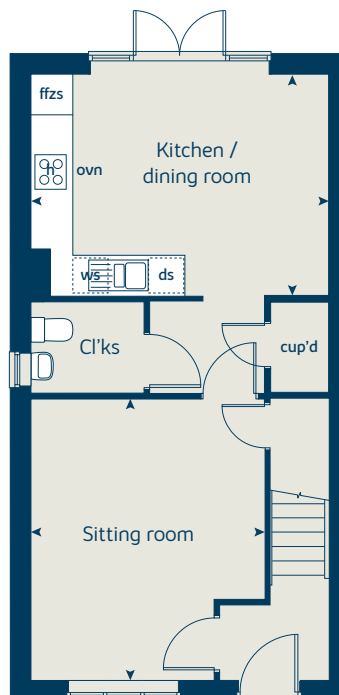
Second floor



First floor



Ground floor





The Chestnut

4 bedroom home



THE GATEWAY
BEXHILL-ON-SEA

bovishomes.co.uk

**Bovis
Homes** 

The Chestnut

4 bedroom home

Ground floor	metres	feet / inches
Kitchen	3.05 x 3.91	10' 0" x 12' 10"
Dining / family area	2.80 x 3.08	9' 2" x 10' 1"
Sitting room	4.98 x 3.41	16' 4" x 11' 2"
Study	3.41 x 1.93	11' 2" x 6' 4"

First floor

Bedroom 1	3.25 x 4.59	10' 8" x 15' 1"
Bedroom 2	3.44 x 3.48	11' 3" x 11' 5"
Bedroom 3	3.42 x 2.31	11' 3" x 7' 7"
Bedroom 4	3.32 x 2.35	10' 11" x 7' 9"

ovn	oven	ffzr	fridge freezer
h	hob	ldr	larder
ds	dishwasher space	cup'd	cupboard
ws	washing machine space	◀ ▶	measuring points

The Chestnut | The Gateway |

The floorplan has been produced for illustrative purposes only. Room sizes shown are between arrow points as indicated on plan. The dimensions have tolerances of + or -50mm and should not be used other than for general guidance. If specific dimensions are required, enquiries should be made to the sales consultant. The floor plans shown are not to scale. Measurements are based on the original drawings. Slight variations may occur during construction.

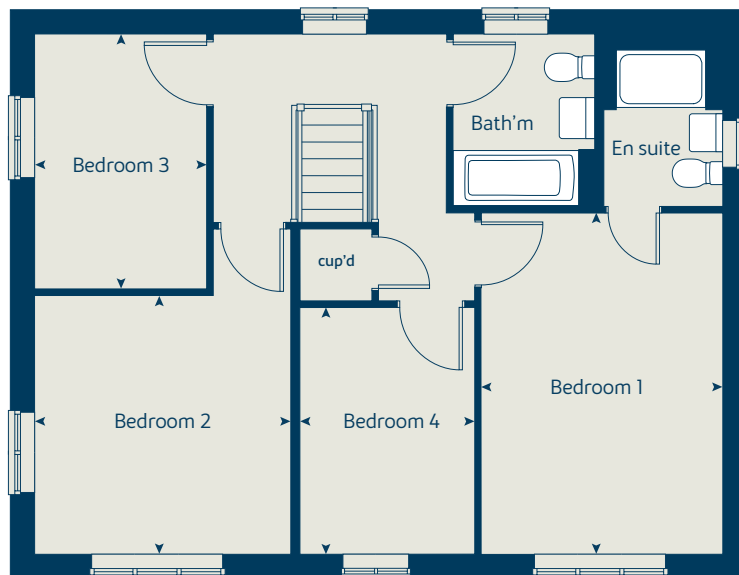
The illustrations shown are computer generated impressions of how the property may look and are indicative only. External details or finishes may vary on individual plots and homes may be built in either detached or attached styles depending on the development layout. Exact specifications, window styles and whether a property is left or right handed may differ from plot to plot. Please speak to our sales consultant for specific plot details.

Produced by the Vistry Group Design Studio.

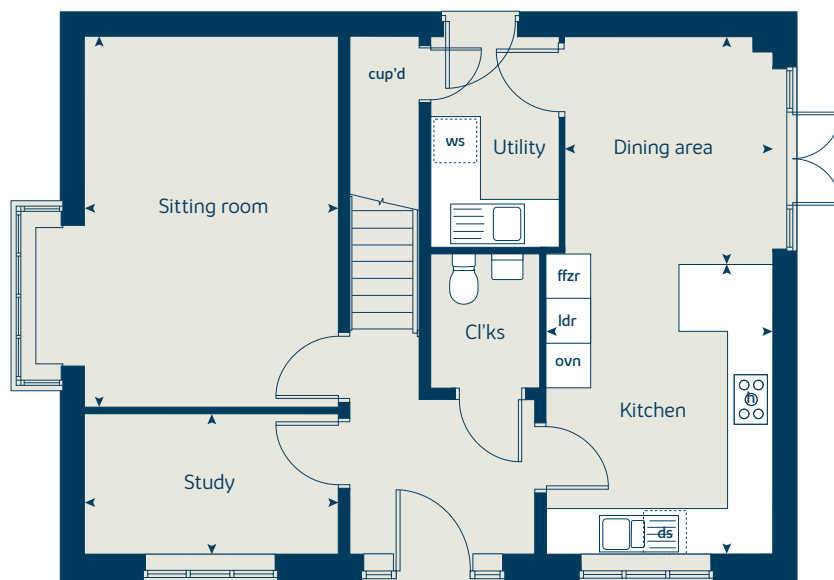
When you have finished with this leaflet please recycle it.

EBEXH DS14799 / 01.26

First floor



Ground floor





The Aspen

4 bedroom home



THE GATEWAY
BEXHILL-ON-SEA

bovishomes.co.uk

**Bovis
Homes** 

The Aspen

4 bedroom home

Ground floor	metres	feet / inches
Kitchen / dining area	7.77 x 3.37	25' 6" x 11' 1"
Sitting room	5.04 x 3.39	16' 6" x 11' 1"
Study	2.01 x 2.01	6' 7" x 6' 7"

First floor

Bedroom 1	4.52 x 3.81	14' 10" x 12' 6"
Bedroom 2	3.87 x 3.11	12' 8" x 10' 2"
Bedroom 3	4.07 x 2.42	13' 4" x 7' 11"
Bedroom 4	3.61 x 2.45	11' 10" x 8' 1"

ovn	oven	ffzr	fridge freezer
h	hob	ldr	larder
ds	dishwasher space	cup'd	cupboard
ws	washing machine space	◀ ▶	measuring points

The Aspen | The Gateway |

The floorplan has been produced for illustrative purposes only. Room sizes shown are between arrow points as indicated on plan. The dimensions have tolerances of + or -50mm and should not be used other than for general guidance. If specific dimensions are required, enquiries should be made to the sales consultant. The floor plans shown are not to scale. Measurements are based on the original drawings. Slight variations may occur during construction.

The illustrations shown are computer generated impressions of how the property may look and are indicative only. External details or finishes may vary on individual plots and homes may be built in either detached or attached styles depending on the development layout. Exact specifications, window styles and whether a property is left or right handed may differ from plot to plot. Please speak to our sales consultant for specific plot details.

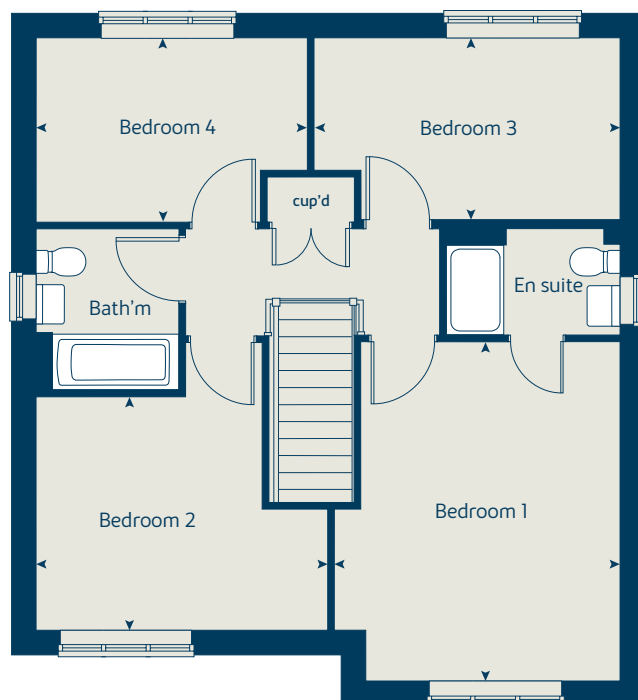
Wardrobes as standard specification if building to NDSS.

Produced by the Vistry Group Design Studio.

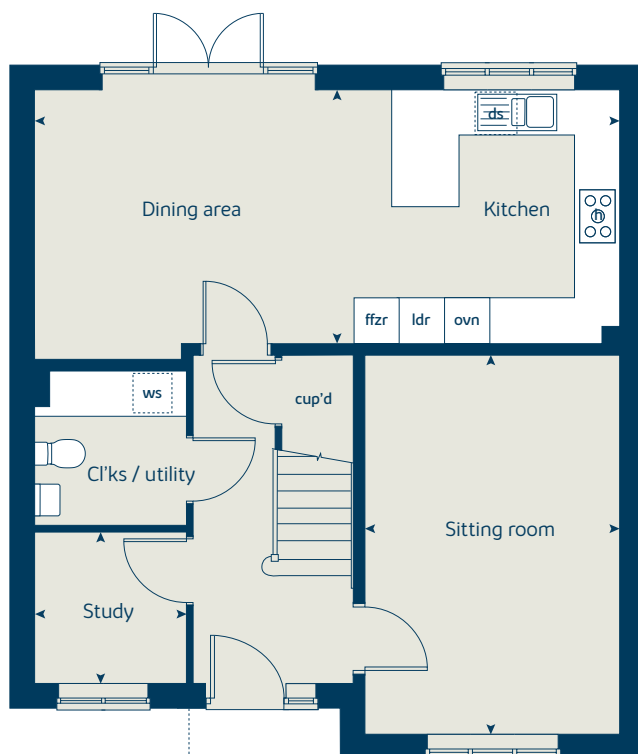
When you have finished with this leaflet please recycle it.

EBEXH DS14799 / 01.26

First floor



Ground floor





The Willow

4 bedroom home



THE GATEWAY
BEXHILL-ON-SEA

bovishomes.co.uk

**Bovis
Homes** 

The Willow

4 bedroom home

Ground floor	metres	feet / inches
Kitchen / dining room	5.97 x 3.77	19' 7" x 12' 4"
Sitting room	4.42 x 3.23	14' 6" x 10' 7"

First floor

Bedroom 2	4.89 x 3.32	16' 1" x 10' 11"
Bedroom 3	3.36 x 3.33	11' 0" x 10' 11"
Bedroom 4	2.80 x 2.56	9' 2" x 8' 5"

Second floor

Bedroom 1	4.34 x 3.50	14' 3" x 11' 6"
-----------	-------------	-----------------

ovn	oven	ffzr	fridge freezer
h	hob	cup'd	cupboard
ds	dishwasher space	◀ ▶	measuring points
ws	washing machine space		

The Willow | The Gateway |

The floorplan has been produced for illustrative purposes only. Room sizes shown are between arrow points as indicated on plan. The dimensions have tolerances of + or -50mm and should not be used other than for general guidance. If specific dimensions are required, enquiries should be made to the sales consultant. The floor plans shown are not to scale. Measurements are based on the original drawings. Slight variations may occur during construction.

The illustrations shown are computer generated impressions of how the property may look and are indicative only. External details or finishes may vary on individual plots and homes may be built in either detached or attached styles depending on the development layout. Exact specifications, window styles and whether a property is left or right handed may differ from plot to plot. Please speak to our sales consultant for specific plot details.

Wardrobe as standard specification if building to NDSS.

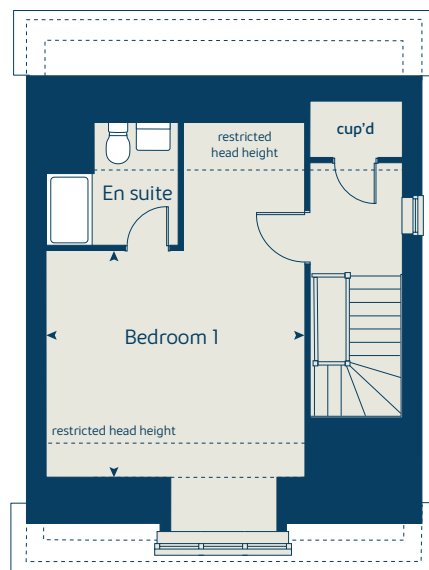
Produced by the Vistry Group Design Studio.

When you have finished with this leaflet please recycle it.

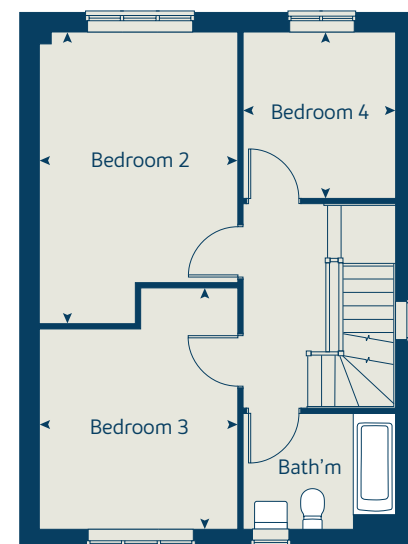
EBEXH DSI4799 / 01.26



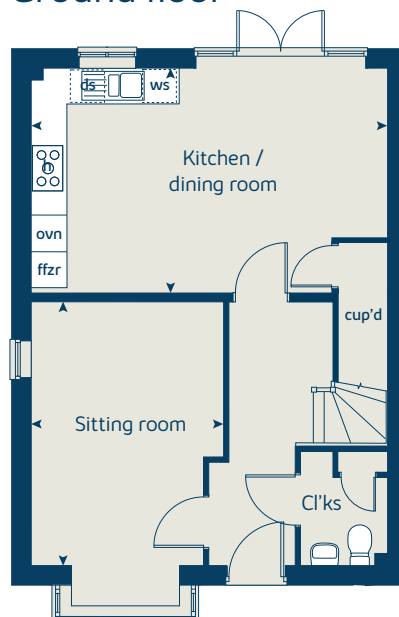
Second floor



First floor



Ground floor





The Briar

4 bedroom home



THE GATEWAY
BEXHILL-ON-SEA

bovishomes.co.uk

**Bovis
Homes** 

The Briar

4 bedroom home

Ground floor	metres	feet / inches
Kitchen	3.83 x 3.04	12' 7" x 10' 0"
Dining area	4.27 x 3.04	14' 0" x 10' 0"
Sitting room	5.76 x 3.07	18' 11" x 10' 1"
Study	3.07 x 2.20	10' 1" x 7' 3"

First floor	metres	feet / inches
Bedroom 1	5.12 x 3.11	16' 10" x 10' 2"
Bedroom 2	3.86 x 3.11	12' 8" x 10' 2"
Bedroom 3	4.12 x 3.11	13' 6" x 10' 2"
Bedroom 4	3.11 x 2.86	10' 3" x 9' 5"

ovn	oven	ffzr	integrated fridge freezer
h	hob	cup'd	cupboard
ds	dishwasher space	◀ ▶	measuring points
ws	washing machine space		

The Briar | The Gateway

The floorplan has been produced for illustrative purposes only. Room sizes shown are between arrow points as indicated on plan. The dimensions have tolerances of + or -50mm and should not be used other than for general guidance. If specific dimensions are required, enquiries should be made to the sales consultant. The floor plans shown are not to scale. Measurements are based on the original drawings. Slight variations may occur during construction.

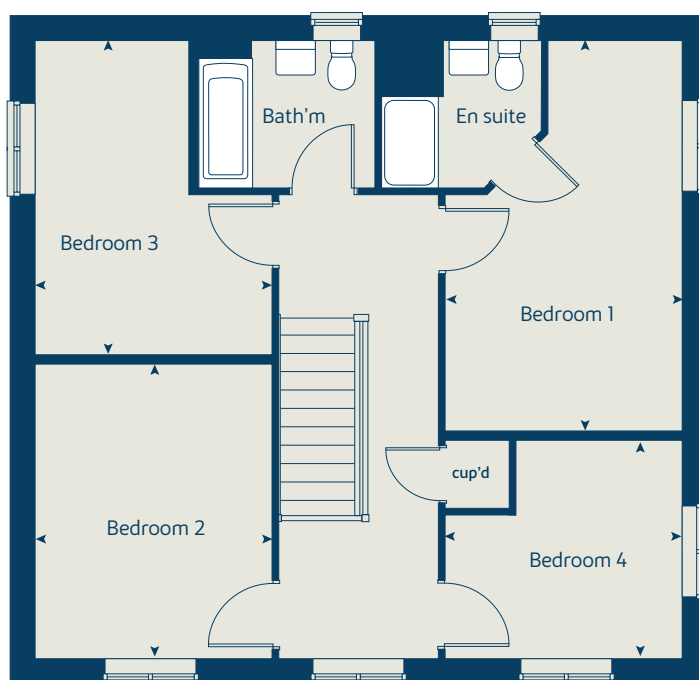
The illustrations shown are computer generated impressions of how the property may look and are indicative only. External details or finishes may vary on individual plots and homes may be built in either detached or attached styles depending on the development layout. Exact specifications, window styles and whether a property is left or right handed may differ from plot to plot. Please speak to our sales consultant for specific plot details.

Produced by the Vistry Group Design Studio.

When you have finished with this leaflet please recycle it.

EBEXH DSI4799 / 01.26

First floor



Ground floor





The Birch

5 bedroom home



THE GATEWAY
BEXHILL-ON-SEA

bovishomes.co.uk

**Bovis
Homes** 

The Birch

5 bedroom home

Ground floor	metres	feet / inches
Kitchen	4.54 x 3.33	14' 11" x 10' 11"
Family / dining area	5.79 x 3.52	19' 0" x 11' 7"
Sitting room	3.61 x 3.75	11' 10" x 12' 4"
Study / dining room	3.00 x 3.65	9' 10" x 12' 0"

First floor

Bedroom 1	3.61 x 2.96	11' 10" x 9' 8"
Bedroom 2	3.92 x 2.91	12' 10" x 9' 7"
Bedroom 3	3.06 x 2.75	10' 1" x 9' 0"
Bedroom 4	3.31 x 2.83	10' 10" x 9' 3"
Bedroom 5	2.83 x 2.69	9' 3" x 8' 10"

ovn	oven	ldr	larder
h	hob	cyl	hot water cylinder
dw	integrated dishwasher	cup'd	cupboard
ws	washing machine space	◀ ▶	measuring points
ffzr	fridge freezer		

The Birch | The Gateway |

The floorplan has been produced for illustrative purposes only. Room sizes shown are between arrow points as indicated on plan. The dimensions have tolerances of + or -50mm and should not be used other than for general guidance. If specific dimensions are required, enquiries should be made to the sales consultant. The floor plans shown are not to scale. Measurements are based on the original drawings. Slight variations may occur during construction.

The illustrations shown are computer generated impressions of how the property may look and are indicative only. External details or finishes may vary on individual plots and homes may be built in either detached or attached styles depending on the development layout. Exact specifications, window styles and whether a property is left or right handed may differ from plot to plot. Please speak to our sales consultant for specific plot details.

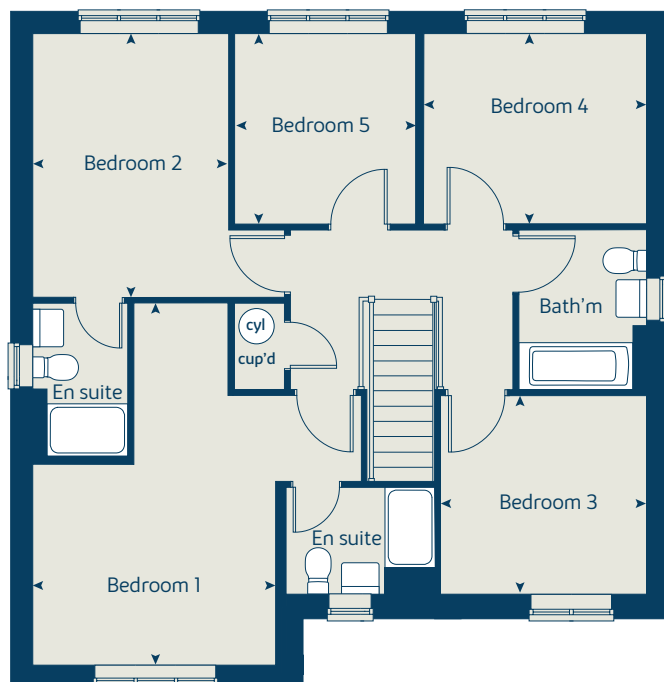
Wardrobes as standard specification if building to NDSS.

Produced by the Vistry Group Design Studio.

When you have finished with this leaflet please recycle it.

EBEXH DSI4799 / 01.26

First floor



Ground floor

