

Summerhill Gardens

Hailsham





Summerhill Gardens

Hailsham

A taste of local life

bovishomes.co.uk

**Bovis
Homes** 



Welcome to Summerhill Gardens

This exciting new development is in the historic East Sussex market town of Hailsham - within easy reach of the popular south coast, the High Weald Area of Outstanding Natural Beauty and the picturesque South Downs National Park.

It's about half a mile from Summerhill Gardens to Hailsham town centre where you'll find bustling weekly markets and a range of national and local shops, supermarkets, pubs as well as schools, health and leisure facilities. The town's Common Pond, a scenic park and garden is also close by.

Whether you enjoy live music, comedy, sports or walking, Hailsham offers it all. The grade II listed Hailsham Pavilion hosts films and live entertainment and the 22-acre Hailsham Country Park is a favourite for nature lovers with its woodlands, wildflower meadows, ponds and a lake. Cyclists can explore the Cuckoo Trail ending in Tunbridge Wells, while the castles of Herstmonceux and Pevensey are steeped in history.

The A295 links Hailsham to the A22 bypass for Eastbourne, 10 miles away and onto the A27 for Brighton 23 miles and Hastings 19 miles. For Royal Tunbridge Wells, head north on the A267 for 24 miles. Buses run between south coast towns and London and for overseas trips the Newhaven Ferry Port is only 18 miles. Trains run to Brighton, Gatwick and London Victoria from Polegate Railway Station, 4 miles away.

Our range of 3, 4 and 5-bedroom homes embrace contemporary design, while retaining classic architecture and traditional build quality. They include popular features such as open-plan living areas, stylish fitted kitchens, bi-fold doors and spacious master bedrooms with en suites.

So, if you're looking for a quality new home in a charming Sussex market town close to the south coast, your search ends here!



The perfect position

Education for everyone

There are a number of primary schools in Hailsham, the closest to Summerhill Gardens is the White House Academy and the Phoenix Academy, both within a 10-minute walk, catering for pupils aged between 4 to 11 years.

For senior pupils Hailsham Community College is an 'all-through' Academy taking children aged from 2 through to 19 years. Just a few miles from Hailsham the independent Bede's Senior School offers day and boarding places to pupils aged from 13 to 18.

The White House Academy
2.0 miles | 6 mins drive




Hailsham Community College
1.9 miles | 6 mins drive






Hailsham Leisure Centre
1.9 miles | 6 mins drive




Hailsham Country Park
2.7 miles | 6 mins drive




Eastbourne District General Hospital
5.4 miles | 13 mins drive

Pevensey Bay
7.6 miles | 12 mins drive




Hailsham Pavilion Theatre and Cinema
2.0 miles | 6 mins drive




Eastbourne Beach
6.9 miles | 16 mins drive




Summerhill Gardens



A community to be proud of



We know that the area surrounding your new home is just as important as the features within your new property. As well as bringing a range of new homes to the area, we also make a commitment, these commitments are chosen based on the needs of our new community and we work with the local council to deliver them. We are proud to have invested towards **£3 million** in local schemes to support the community surrounding your new home in Hailsham.

Our homes are **Greener by Design!** From solar panels, high class installation and EV charging points, our homes have everything you need to save on your energy bills.



Some of our **community contributions** include:

<p>IMPROVED PUBLIC TRANSPORT FACILITIES</p>	<p>PUBLIC OPEN SPACES</p>	<p>NEW COMMUNITY FACILITIES</p>	<p>CYCLE ROUTES</p>
<p>PRIMARY AND SECONDARY EDUCATION</p>	<p>PUBLIC ART</p>	<p>SPORTS AND LEISURE FACILITIES</p>	<p>HIGHWAY AND ROAD IMPROVEMENT</p>

Green initiatives found at Summerhill Gardens:

<p>WASTE WATER HEAT RECOVERY SYSTEMS</p>	<p>238 VEHICLE CHARGING POINTS</p>	<p>87 TREES PLANTED</p>
<p>88 AIR SOURCE HEAT PUMPS</p>	<p>A+ RATED DOUBLE-GLAZED WINDOWS</p>	<p>118 PLOTS HAVE PV SOLAR PANELS</p>

Personalise your new home with upgrades and extras from our **Select** range, where the choice is yours

Customise your kitchen with stylish worktops and the latest modern appliances and personalise your bathrooms with stunning ceramics.

Using the **Select** range there are various options allowing you to create your perfect property which is truly unique to you.

You can personalise every space in your home from kitchen cupboards and electrics to built in wardrobes and if you have a preference for flooring, you can select from our diverse range that includes luxurious carpets, stylish Karndean, ceramics and vinyl.

Pick up a **Select** brochure from a sales consultant today to find an extensive list of items available, including:

- Quartz or Granite worktops
- A selection of kitchen packages including integrated appliances
- Flooring
- Built-in wardrobes
- Upgraded tiling and many more!

The choice is yours - with **Select**.



Purchase assistance schemes

Wherever you are in the home-buying market - a first-time buyer, looking to step up the property ladder or a downsizer - we have a variety of great purchase assistance schemes!

Smooth Move

Smooth Move is our scheme for all existing property owners to save time and money. We deal with the estate agents to sell your home and even pay the estate agents' fees!

Home Exchange

With Home Exchange you can have peace of mind knowing that we are your guaranteed buyer, meaning you'll have a chain-free move without the estate agents' fees.

Armed Forces

TRINITY

Helping members of the Armed Forces to own a home with assistance from Bovis Homes, the government and the Ministry of Defence.

Deposit Unlock



With Deposit Unlock, whether you are a first time or next time buyer, you could purchase a new Bovis Home with just a 5% deposit up to the value of £750,000!

A home designed with you in mind

We are constantly reviewing our houses and ensuring they are everything that our customers want in a home. We are proud to have developed and launched a new range of homes.

These homes have been created to embrace modern design and styling, whilst retaining classic architectural traditions

An integral part of the design process for our new range of homes was to ensure they have a real wow factor and eye-catching kerb appeal. From designing external elevations to create attractive street scenes through to maximising the flow and size of the rooms, the homes include a variety of features to capture the attention.

The size, positioning and number of windows in our new housing collection have created bright and airy homes, this mixed in with the higher ceilings gives your property a spacious feel.

The flow and layout of the new homes has been a key consideration to accommodate today's lifestyles, with a focus on future living.

With the kitchen at the heart of the home, impressive family spaces have been included within them to create sociable living areas, while attention on bedroom 1 and en suites has given the homes added desirability.

Many of the properties include popular bi-fold doors helping to bring the outside in and enhance the gardens as an extended living area.



Firm foundations means peace of mind for you

When buying a new home, you want to be sure you can trust your builder. Choosing a Bovis Home gives you the peace of mind that comes from choosing a company that has been building some of the **best homes in the UK for more than a hundred years.**

We pride ourselves on being one of the country's leading housebuilders and have established an enviable reputation for the quality of our build and design, specification and customer service.

Each Bovis Home is carefully planned both to meet your needs and to integrate into the existing location.

We will often use local materials and reflect regional features. Trees are retained wherever possible and new landscaping added, along with footpaths and cycleways in many cases to help create a wonderful place to live.

Scan me
for directions



Summerhill Gardens

Ersham Road, Hailsham

BN27 2RH

01323 315 374

Cover photograph of Hailsham town centre. Not view from the development. The streetscene has been produced for illustrative purposes only. Please check the details of the homes you are interested in with our sales consultant.

Vistry South East region

Linden House, Guards Avenue, Caterham, Surrey CR3 5XL. Telephone: 01883 334 400

Produced by the Vistry Group Design Studio.

When you have finished with this leaflet please recycle it.

DS10731 / 10.24

**Bovis
Homes** 



Summerhill Gardens

Hailsham

Development plan

bovishomes.co.uk

**Bovis
Homes** 

Summerhill Gardens

Hailsham



3 bedroom homes

- The Hazel
- The Spruce
- The Cypress
- The Rose

4 bedroom homes

- The Juniper
- The Chestnut
- The Chestnut II
- The Aspen
- The Orchid

5 bedroom homes

- The Birch

Pre-sold homes

- 1 bedroom apartments
- 1 and 2 bedroom apartments
- 2 bedroom apartments
- 2 bedroom homes
- 3 bedroom homes
- 4 bedroom homes

- lap local area for play
- leap local equipped area for play
- neap neighbourhood area for play
- ss substation
- ps pumping station
- v visitor space



This plan has been produced for home identification purposes only and is not to scale. The development layout, landscaping and tenure of all dwellings may be subject to change throughout the course of the development. Finishes and materials may vary from those shown on the plan. Please check the details of your chosen plot and house type with the sales consultant. Development layout plan correct at time of production.

Vistry South East region

Linden House, Guards Avenue, Caterham, Surrey CR3 5XL. Telephone: 01883 334 400

Produced by the Vistry Group Design Studio.

When you have finished with this leaflet please recycle it.

DS14490 / 08.25





The Hazel

3 bedroom home

bovishomes.co.uk

**Bovis
Homes** 

The Hazel

3 bedroom home

Ground floor	metres	feet / inches
Kitchen / dining room	5.19 x 2.99	17' 0" x 9' 10"
Sitting room	4.17 x 3.66	13' 8" x 12' 0"

First floor

Bedroom 1	3.54 x 3.29	11' 7" x 10' 9"
Bedroom 2	2.95 x 2.72	9' 8" x 8' 11"
Bedroom 3	3.48 x 2.15	11' 5" x 7' 1"

ovn	oven	ffzs	fridge freezer space
h	hob	cup'd	cupboard
ds	dishwasher space	◀ ▶	measuring points
ws	washing machine space		

The Hazel | X305 04 Summerhill Gardens |

The floorplan has been produced for illustrative purposes only. Room sizes shown are between arrow points as indicated on plan. The dimensions have tolerances of + or -50mm and should not be used other than for general guidance. If specific dimensions are required, enquiries should be made to the sales consultant. The floor plans shown are not to scale. Measurements are based on the original drawings. Slight variations may occur during construction.

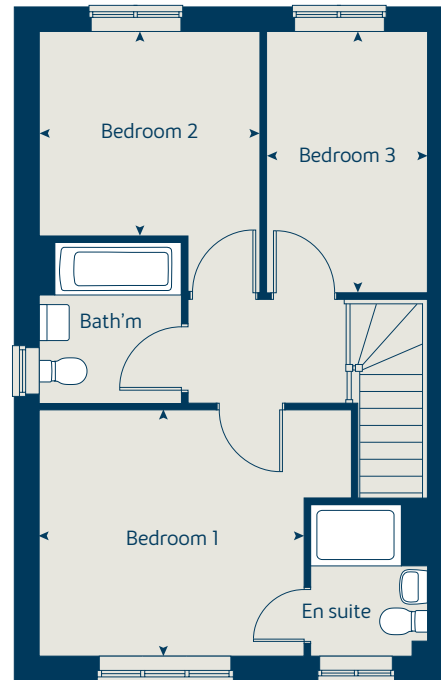
The illustrations shown are computer generated impressions of how the property may look and are indicative only. External details or finishes may vary on individual plots and homes may be built in either detached or attached styles depending on the development layout. Exact specifications, window styles and whether a property is left or right handed may differ from plot to plot. Please speak to our sales consultant for specific plot details.

Produced by the Vistry Group Design Studio.

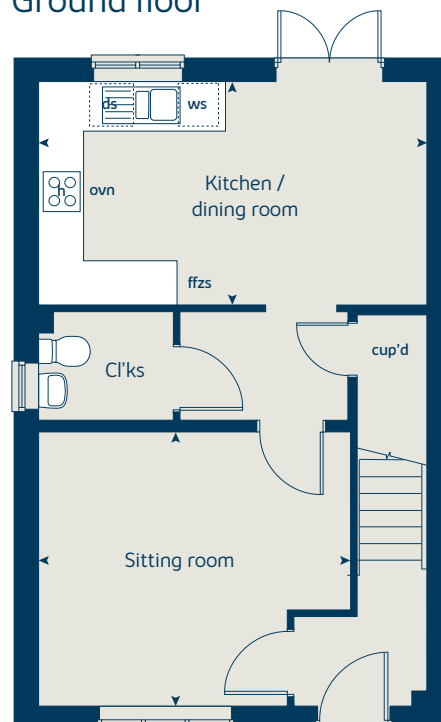
When you have finished with this leaflet please recycle it.

DS10731 / 09.24

First floor



Ground floor





The Spruce

3 bedroom home

bovishomes.co.uk

**Bovis
Homes** 

The Spruce

3 bedroom home

Ground floor	metres	feet / inches
Kitchen	3.16 x 2.69	10' 4" x 8' 10"
Dining area	3.14 x 2.36	10' 4" x 7' 9"
Sitting room	5.53 x 3.32	18' 2" x 10' 11"

First floor	metres	feet / inches
Bedroom 1	3.34 x 2.94	10' 11" x 9' 8"
Bedroom 2	3.60 x 3.27	11' 10" x 10' 9"
Bedroom 3	3.63 x 2.17	11' 11" x 7' 2"

ovn	oven	ffzs	fridge-freezer space
h	hob	cup'd	cupboard
ds	dishwasher space	◀ ▶	measuring points
ws	washing machine space		

The Spruce | X307 (IF) 02 Summerhill Gardens |

The floorplan has been produced for illustrative purposes only. Room sizes shown are between arrow points as indicated on plan. The dimensions have tolerances of + or -50mm and should not be used other than for general guidance. If specific dimensions are required, enquiries should be made to the sales consultant. The floor plans shown are not to scale. Measurements are based on the original drawings. Slight variations may occur during construction.

The illustrations shown are computer generated impressions of how the property may look and are indicative only. External details or finishes may vary on individual plots and homes may be built in either detached or attached styles depending on the development layout. Exact specifications, window styles and whether a property is left or right handed may differ from plot to plot. Please speak to our sales consultant for specific plot details.

* Windows apply to selected plots only. Please see sales consultant for further details.

** Front piers apply to selected plots only. Please see sales consultant for further details.

① Alternative ground floor layout applies to selected plots only. Please see sales consultant for further details.

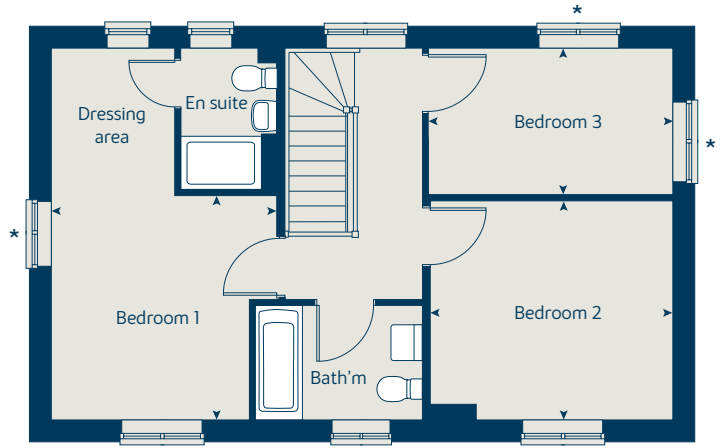
② Alternative ground floor layout applies to selected plots only. Please see sales consultant for further details.

Produced by the Vistry Group Design Studio.

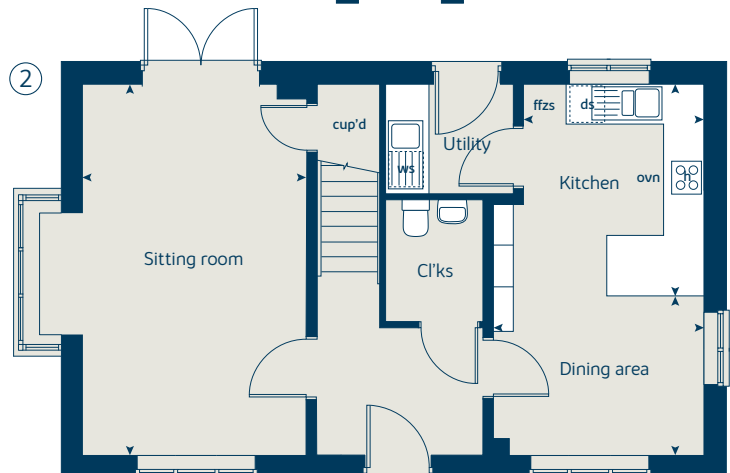
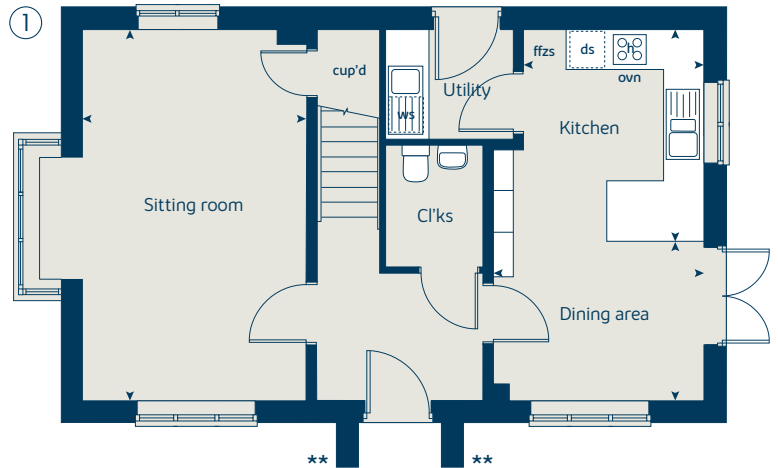
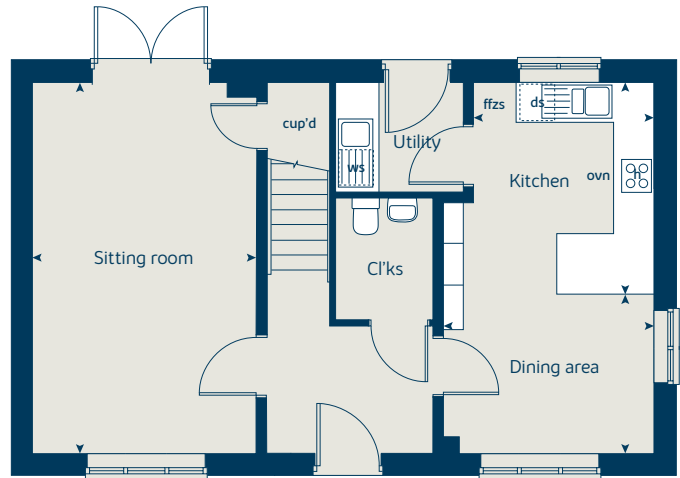
When you have finished with this leaflet please recycle it.

DS10731 / 09.24

First floor



Ground floor





The Cypress

3 bedroom home

bovishomes.co.uk

**Bovis
Homes** 

The Cypress

3 bedroom home

Ground floor	metres	feet / inches
Kitchen / dining area	5.52 x 3.12	18' 1" x 10' 2"
Sitting room	4.40 x 3.40	14' 6" x 11' 1"

First floor

Bedroom 1	4.10 x 3.28	13' 6" x 10' 9"
Bedroom 2	3.28 x 2.83	10' 9" x 9' 3"
Bedroom 3	3.52 x 2.16	11' 7" x 7' 1"

ovn	oven	ffzs	fridge freezer space
h	hob	cup'd	cupboard
ds	dishwasher space	◀ ▶	measuring points
ws	washing machine space		

The Cypress | X308 (IF) 02 Summerhill Gardens |

The floorplan has been produced for illustrative purposes only. Room sizes shown are between arrow points as indicated on plan. The dimensions have tolerances of + or -50mm and should not be used other than for general guidance. If specific dimensions are required, enquiries should be made to the sales consultant. The floor plans shown are not to scale. Measurements are based on the original drawings. Slight variations may occur during construction.

The illustrations shown are computer generated impressions of how the property may look and are indicative only. External details or finishes may vary on individual plots and homes may be built in either detached or attached styles depending on the development layout. Exact specifications, window styles and whether a property is left or right handed may differ from plot to plot. Please speak to our sales consultant for specific plot details.

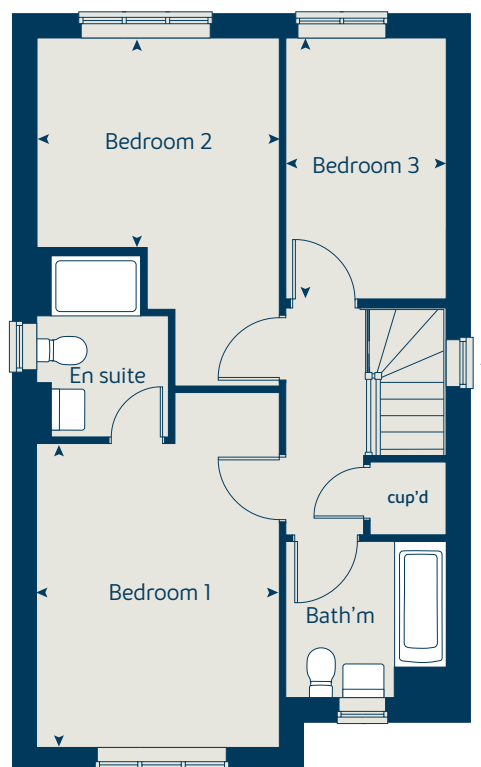
* Windows apply to selected plots only. Please see sales consultant for further details.

Produced by the Vistry Group Design Studio.

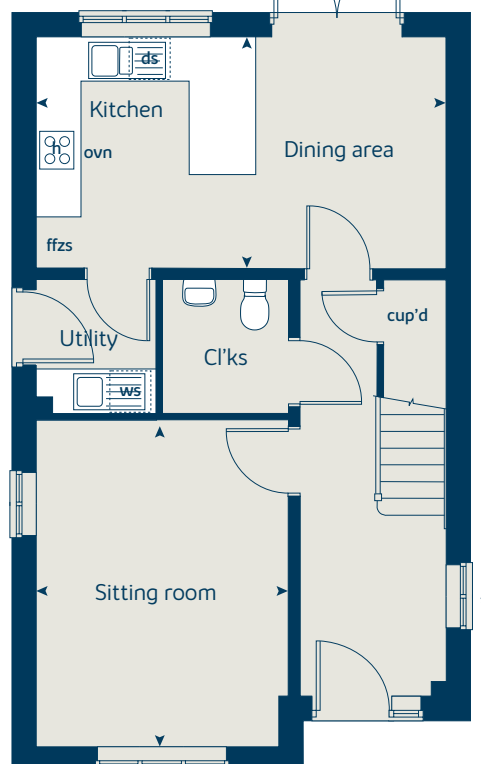
When you have finished with this leaflet please recycle it.

DS10731 / 09.24

First floor



Ground floor





The Rose

3 bedroom home

bovishomes.co.uk

**Bovis
Homes** 

The Rose

3 bedroom home

Ground floor	metres	feet / inches
Kitchen / dining area	5.59 x 2.90	18' 4" x 9' 6"
Sitting room	5.59 x 3.33	18' 4" x 10' 11"

First floor

Bedroom 1	3.43 x 3.39	11' 3" x 11' 2"
Bedroom 2	3.34 x 2.94	10' 11" x 9' 8"
Bedroom 3	2.99 x 2.56	9' 10" x 8' 5"

ovn	oven	ffzs	fridge freezer space
h	hob	cup'd	cupboard
ds	dishwasher space	◀ ▶	measuring points
ws	washing machine space		

The Rose | Summerhill Gardens |

The floorplan has been produced for illustrative purposes only. Room sizes shown are between arrow points as indicated on plan. The dimensions have tolerances of + or -50mm and should not be used other than for general guidance. If specific dimensions are required, enquiries should be made to the sales consultant. The floor plans shown are not to scale. Measurements are based on the original drawings. Slight variations may occur during construction.

The illustrations shown are computer generated impressions of how the property may look and are indicative only. External details or finishes may vary on individual plots and homes may be built in either detached or attached styles depending on the development layout. Exact specifications, window styles and whether a property is left or right handed may differ from plot to plot. Please speak to our sales consultant for specific plot details.

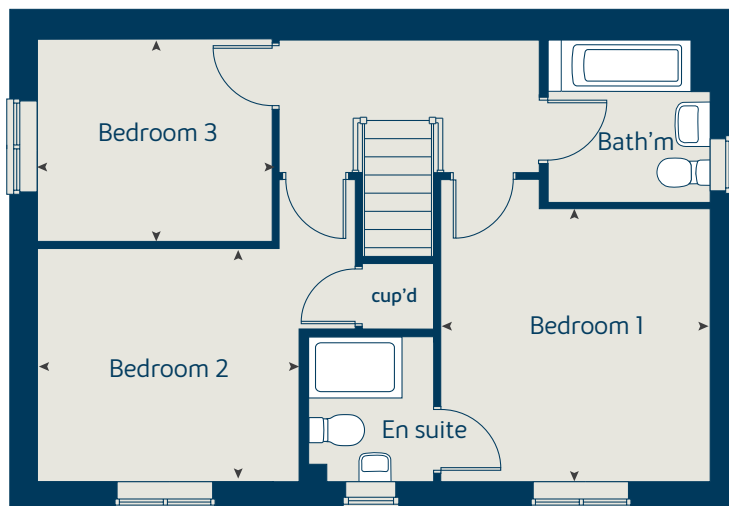
* Windows apply to selected plots only. Please see sales consultant for further details.

Produced by the Vistry Group Design Studio.

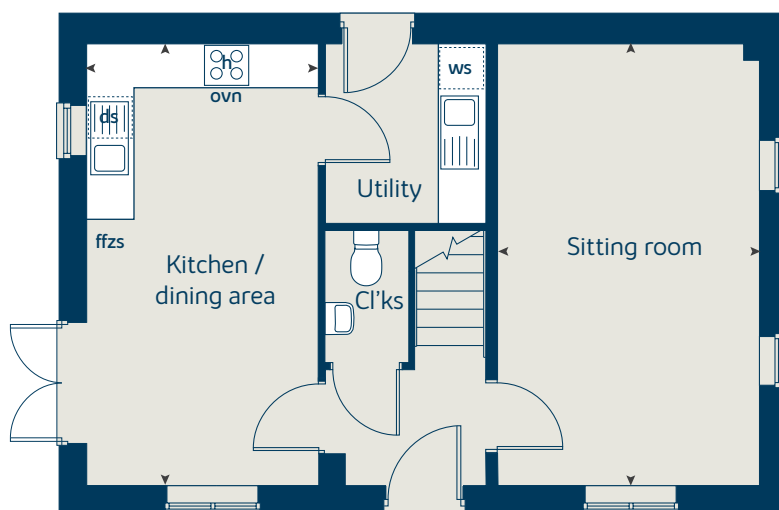
When you have finished with this leaflet please recycle it.

DS10731 / 09.24

First floor



Ground floor





The Orchid

4 bedroom home

bovishomes.co.uk

**Bovis
Homes** 

The Orchid

4 bedroom home

Ground floor	metres	feet / inches
Kitchen / dining / family area	6.08 x 3.80	19' 9" x 12' 5"
Sitting room	4.83 x 3.39	15' 10" x 11' 2"

First floor

Bedroom 1	3.97 x 2.98	13' 0" x 9' 8"
Bedroom 2	3.20 x 2.56	10' 6" x 8' 2"
Bedroom 3	3.38 x 2.18	11' 3" x 7' 2"
Bedroom 4	3.09 x 2.08	9' 10" x 6' 10"

ovn	oven	ffzs	fridge freezer space
h	hob	cup'd	cupboard
ds	dishwasher space	◀ ▶	measuring points
ws	washing machine space		

The Orchid | Summerhill Gardens |

The floorplan has been produced for illustrative purposes only. Room sizes shown are between arrow points as indicated on plan. The dimensions have tolerances of + or -50mm and should not be used other than for general guidance. If specific dimensions are required, enquiries should be made to the sales consultant. The floor plans shown are not to scale. Measurements are based on the original drawings. Slight variations may occur during construction.

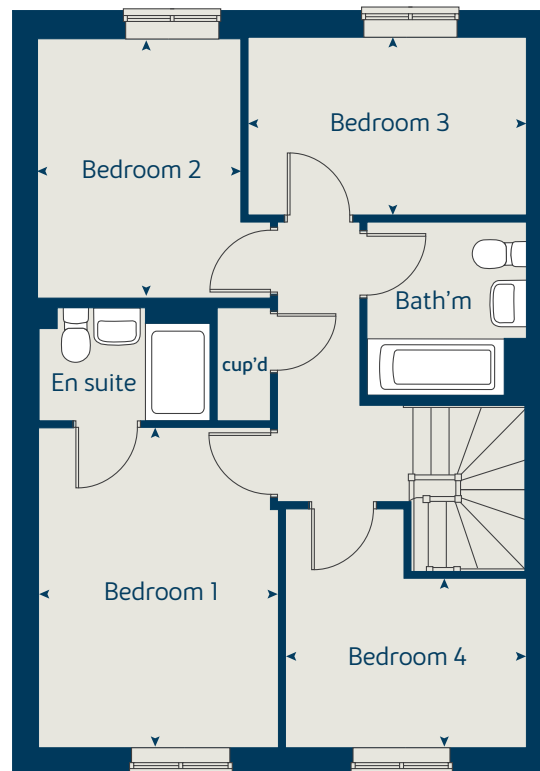
The illustrations shown are computer generated impressions of how the property may look and are indicative only. External details or finishes may vary on individual plots and homes may be built in either detached or attached styles depending on the development layout. Exact specifications, window styles and whether a property is left or right handed may differ from plot to plot. Please speak to our sales consultant for specific plot details.

Produced by the Vistry Group Design Studio.

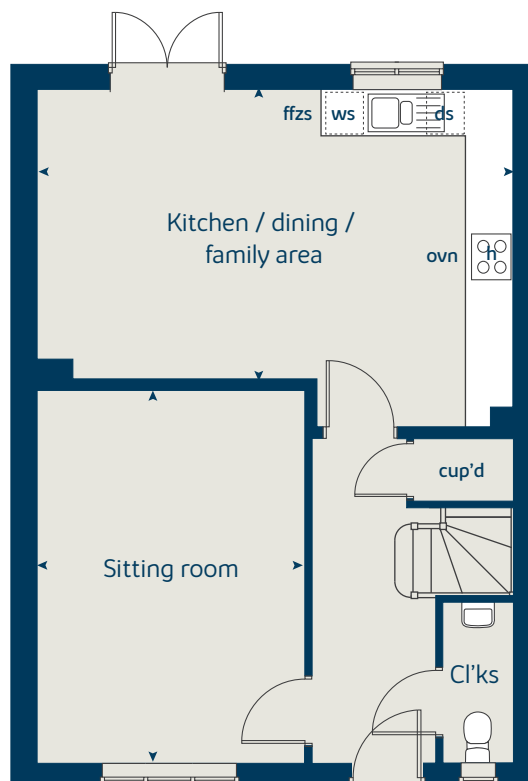
When you have finished with this leaflet please recycle it.

DS10731 / 09.24

First floor



Ground floor





The Juniper

4 bedroom home

bovishomes.co.uk

**Bovis
Homes** 

The Juniper

4 bedroom home

Ground floor	metres	feet / inches
Kitchen / dining / family area	7.21 x 3.52	23' 8" x 11' 7"
Sitting room	4.55 x 3.04	14' 11" x 10' 0"
Study	2.34 x 1.85	7' 8" x 6' 1"

First floor

Bedroom 1	3.47 x 2.85	11' 5" x 9' 4"
Bedroom 2	3.65 x 2.84	12' 0" x 9' 4"
Bedroom 3	3.52 x 2.38	11' 7" x 7' 10"
Bedroom 4	3.61 x 2.38	11' 10" x 7' 10"

ovn	oven	ffzr	fridge freezer
h	hob	ldr	larder
ds	dishwasher space	cup'd	cupboard
ws	washing machine space	< >	measuring points

The Juniper | X412 02 Summerhill Gardens |

The floorplan has been produced for illustrative purposes only. Room sizes shown are between arrow points as indicated on plan. The dimensions have tolerances of + or -50mm and should not be used other than for general guidance. If specific dimensions are required, enquiries should be made to the sales consultant. The floor plans shown are not to scale. Measurements are based on the original drawings. Slight variations may occur during construction.

The illustrations shown are computer generated impressions of how the property may look and are indicative only. External details or finishes may vary on individual plots and homes may be built in either detached or attached styles depending on the development layout. Exact specifications, window styles and whether a property is left or right handed may differ from plot to plot. Please speak to our sales consultant for specific plot details.

* Windows apply to selected plots only.
Please see sales consultant for further details.

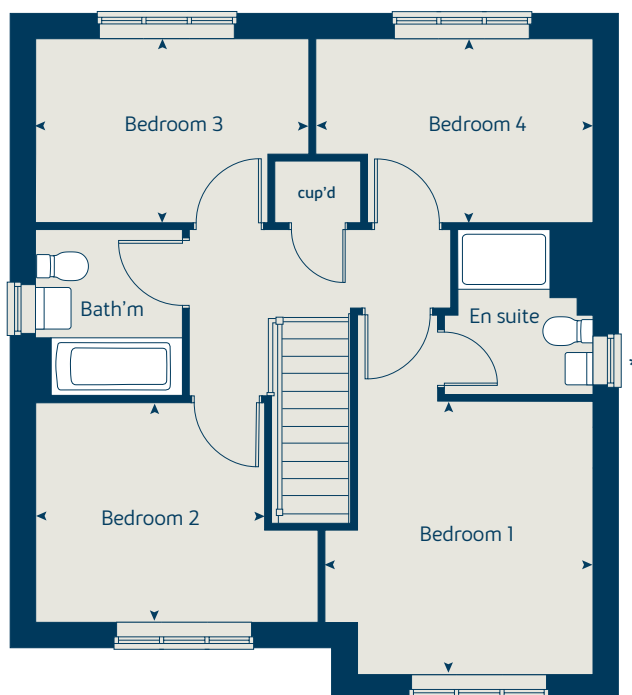
** Brick pier applies to selected plots only.
Please see sales consultant for further details.

Produced by the Vistry Group Design Studio.

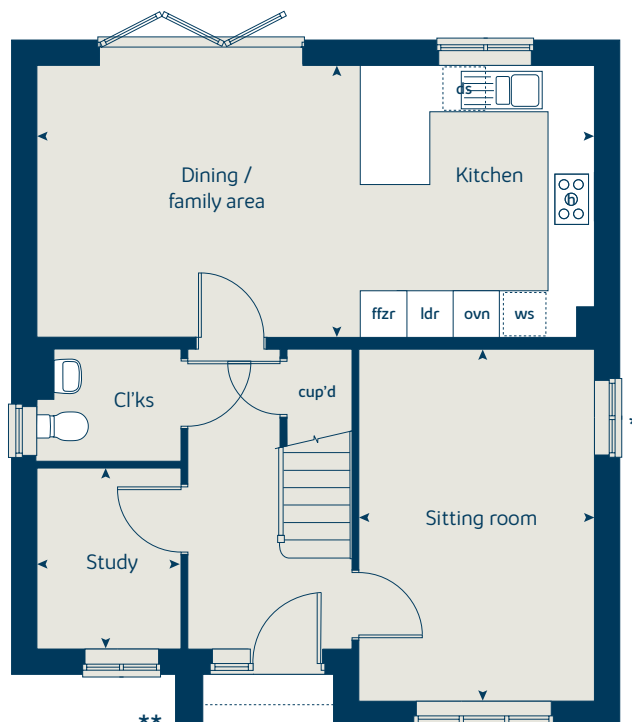
When you have finished with this leaflet please recycle it.

DS12488 / 11.24

First floor



Ground floor





The Chestnut

4 bedroom home

bovishomes.co.uk

**Bovis
Homes** 

The Chestnut

4 bedroom home

Ground floor	metres	feet / inches
Kitchen	4.05 x 3.05	13' 3" x 10' 0"
Dining / family area	4.60 x 2.83	15' 1" x 9' 3"
Sitting room	4.98 x 3.41	16' 4" x 11' 2"
Study	3.41 x 1.81	11' 2" x 5' 11"

First floor

Bedroom 1	3.24 x 2.98	10' 7" x 9' 8"
Bedroom 2	3.44 x 3.37	11' 3" x 11' 1"
Bedroom 3	3.42 x 2.31	11' 3" x 7' 7"
Bedroom 4	3.21 x 2.35	10' 6" x 7' 9"

ovn	oven	ffzr	fridge freezer
h	hob	ldr	larder
ds	dishwasher space	cup'd	cupboard
ws	washing machine space	◀ ▶	measuring points

The Chestnut | X413 02 Summerhill Gardens |

The floorplan has been produced for illustrative purposes only. Room sizes shown are between arrow points as indicated on plan. The dimensions have tolerances of + or -50mm and should not be used other than for general guidance. If specific dimensions are required, enquiries should be made to the sales consultant. The floor plans shown are not to scale. Measurements are based on the original drawings. Slight variations may occur during construction.

The illustrations shown are computer generated impressions of how the property may look and are indicative only. External details or finishes may vary on individual plots and homes may be built in either detached or attached styles depending on the development layout. Exact specifications, window styles and whether a property is left or right handed may differ from plot to plot. Please speak to our sales consultant for specific plot details.

* Windows apply to selected plots only. Please see sales consultant for further details.

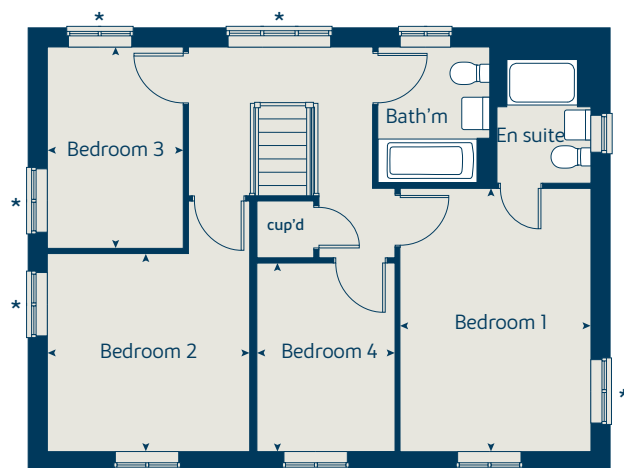
- ① Alternative ground floor layout applies to selected plots only. Please see sales consultant for further details.
- ② Alternative ground floor layout applies to selected plots only. Please see sales consultant for further details.

Produced by the Vistry Group Design Studio.

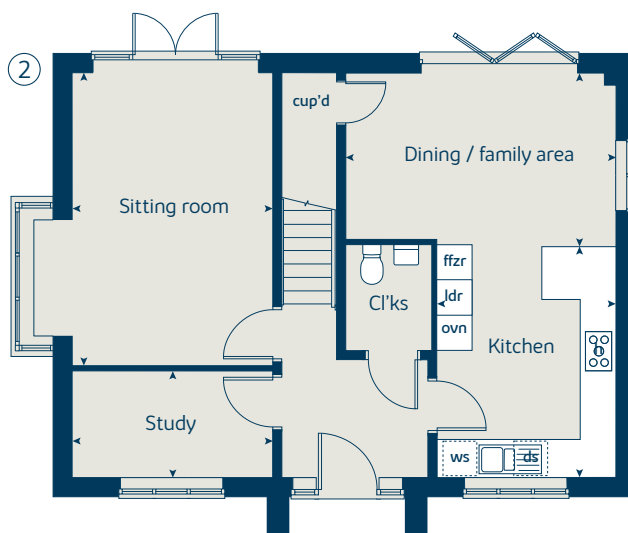
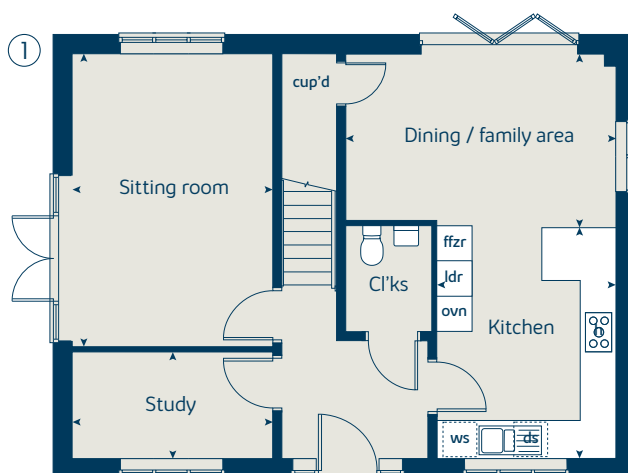
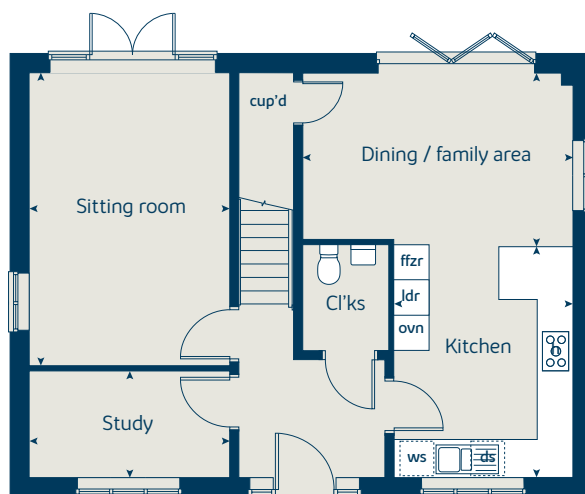
When you have finished with this leaflet please recycle it.

DS12488 / 11.24

First floor



Ground floor





The Chestnut II

4 bedroom home

bovishomes.co.uk

**Bovis
Homes** 

The Chestnut II

4 bedroom home

Ground floor	metres	feet / inches
Kitchen	4.05 x 3.05	13' 3" x 10' 0"
Dining / family area	4.60 x 2.83	15' 1" x 9' 3"
Sitting room	4.98 x 3.41	16' 4" x 11' 2"
Study	3.41 x 1.81	11' 2" x 5' 11"

First floor

Bedroom 1	3.24 x 2.98	10' 7" x 9' 8"
Bedroom 2	3.44 x 3.37	11' 3" x 11' 1"
Bedroom 3	3.42 x 2.31	11' 3" x 7' 7"
Bedroom 4	3.21 x 2.35	10' 6" x 7' 9"

ovn	oven	ffzr	fridge freezer
h	hob	ldr	larder
ds	dishwasher space	cup'd	cupboard
ws	washing machine space	◀ ▶	measuring points

The Chestnut II | X413 Summerhill Gardens |

The floorplan has been produced for illustrative purposes only. Room sizes shown are between arrow points as indicated on plan. The dimensions have tolerances of + or -50mm and should not be used other than for general guidance. If specific dimensions are required, enquiries should be made to the sales consultant. The floor plans shown are not to scale. Measurements are based on the original drawings. Slight variations may occur during construction.

The illustrations shown are computer generated impressions of how the property may look and are indicative only. External details or finishes may vary on individual plots and homes may be built in either detached or attached styles depending on the development layout. Exact specifications, window styles and whether a property is left or right handed may differ from plot to plot. Please speak to our sales consultant for specific plot details.

* Windows apply to selected plots only. Please see sales consultant for further details.

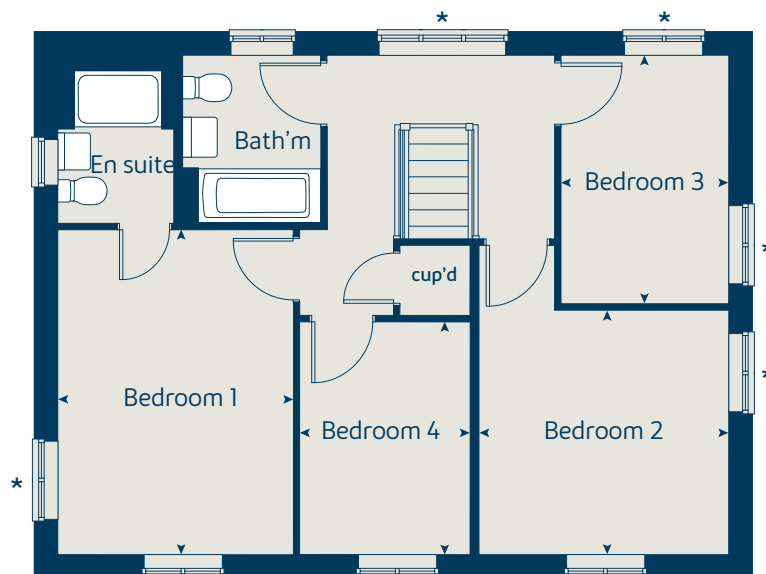
** Brick piers apply to selected plots only. Please see sales consultant for further details.

Produced by the Vistry Group Design Studio.

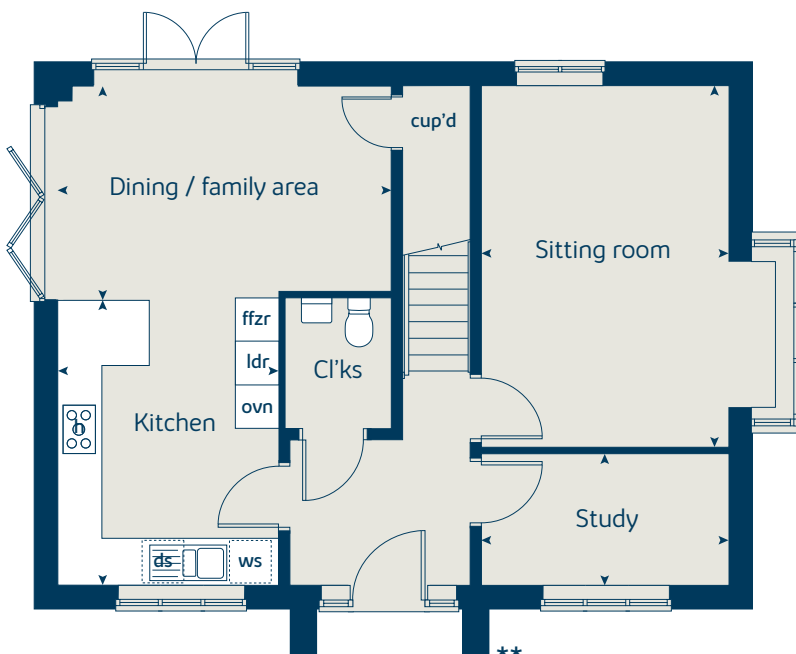
When you have finished with this leaflet please recycle it.

DS12488 / 11.24

First floor



Ground floor





The Aspen

4 bedroom home

bovishomes.co.uk

**Bovis
Homes** 

The Aspen

4 bedroom home

Ground floor	metres	feet / inches
Kitchen / dining area	7.77 x 3.37	25' 6" x 11' 1"
Sitting room	5.04 x 3.39	16' 6" x 11' 1"
Study	2.01 x 2.01	6' 7" x 6' 7"

First floor

Bedroom 1	4.52 x 3.81	14' 10" x 12' 6"
Bedroom 2	3.87 x 3.11	12' 8" x 10' 2"
Bedroom 3	4.07 x 2.42	13' 4" x 7' 11"
Bedroom 4	3.61 x 2.45	11' 10" x 8' 1"

ovn	oven	ffzr	fridge freezer
h	hob	ldr	larder
ds	dishwasher space	cup'd	cupboard
ws	washing machine space	< >	measuring points

The Aspen | X414 (IF) 02 Summerhill Gardens |

The floorplan has been produced for illustrative purposes only. Room sizes shown are between arrow points as indicated on plan. The dimensions have tolerances of + or -50mm and should not be used other than for general guidance. If specific dimensions are required, enquiries should be made to the sales consultant. The floor plans shown are not to scale. Measurements are based on the original drawings. Slight variations may occur during construction.

The illustrations shown are computer generated impressions of how the property may look and are indicative only. External details or finishes may vary on individual plots and homes may be built in either detached or attached styles depending on the development layout. Exact specifications, window styles and whether a property is left or right handed may differ from plot to plot. Please speak to our sales consultant for specific plot details.

* Windows apply to selected plots only. Please see sales consultant for further details.

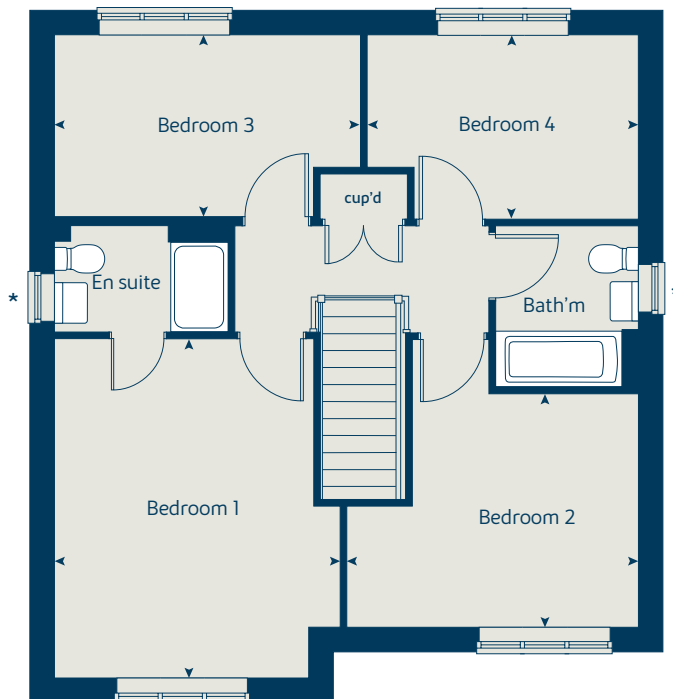
** Brick pier applies to selected plots only. Please see sales consultant for further details.

Produced by the Vistry Group Design Studio.

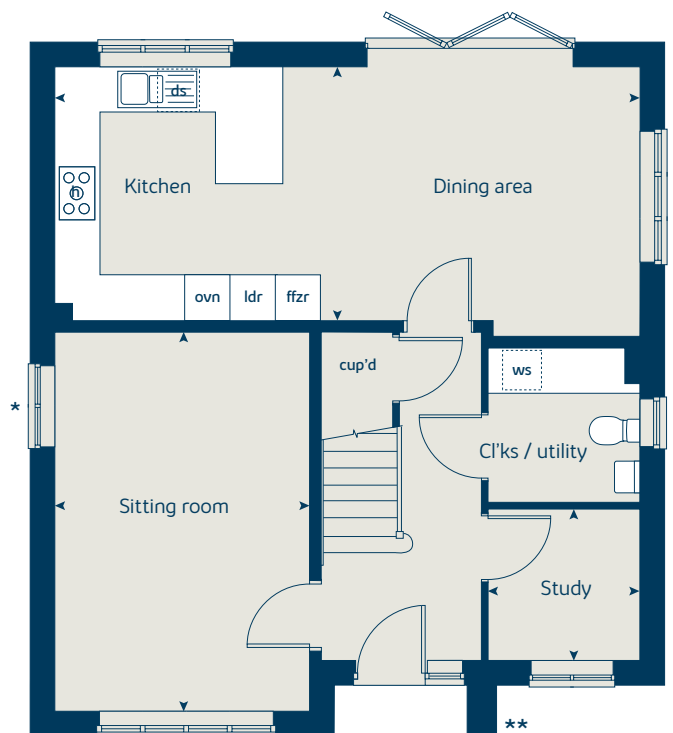
When you have finished with this leaflet please recycle it.

DS12488 / 11.24

First floor



Ground floor





The Birch

5 bedroom home

bovishomes.co.uk

**Bovis
Homes** 

The Birch

5 bedroom home

Ground floor	metres	feet / inches
Kitchen	4.54 x 3.33	14' 11" x 10' 11"
Family / dining area	5.79 x 3.52	19' 0" x 11' 7"
Sitting room	4.30 x 3.61	14' 1" x 11' 10"
Study / dining room	3.41 x 3.00	11' 2" x 9' 10"

First floor

Bedroom 1	3.61 x 3.51	11' 10" x 11' 6"
Bedroom 2	3.92 x 2.91	12' 10" x 9' 7"
Bedroom 3	3.06 x 2.75	10' 1" x 9' 0"
Bedroom 4	3.31 x 2.83	10' 10" x 9' 3"
Bedroom 5	2.83 x 2.69	9' 3" x 8' 10"

ovn	oven	ldr	larder
h	hob	cyl	hot water cylinder
ds	dishwasher space	cup'd	cupboard
ws	washing machine space	w	wardrobe
ffzr	fridge freezer	< >	measuring points

The Birch | X518 (IF) 02 Summerhill Gardens |

The floorplan has been produced for illustrative purposes only. Room sizes shown are between arrow points as indicated on plan. The dimensions have tolerances of + or -50mm and should not be used other than for general guidance. If specific dimensions are required, enquiries should be made to the sales consultant. The floor plans shown are not to scale. Measurements are based on the original drawings. Slight variations may occur during construction.

The illustrations shown are computer generated impressions of how the property may look and are indicative only. External details or finishes may vary on individual plots and homes may be built in either detached or attached styles depending on the development layout. Exact specifications, window styles and whether a property is left or right handed may differ from plot to plot. Please speak to our sales consultant for specific plot details.

* Windows apply to selected plots only.
Please see sales consultant for further details.

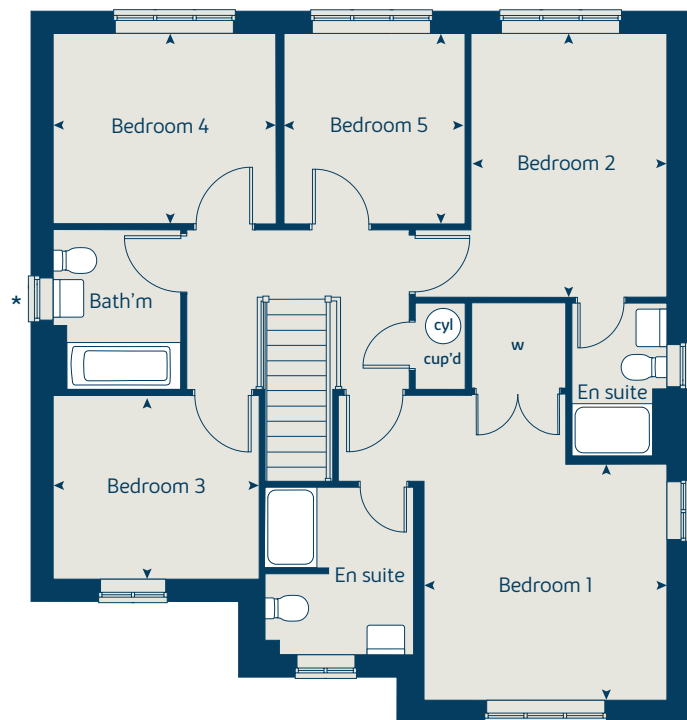
** Brick pier applies to selected plots only.
Please see sales consultant for further details.

Produced by the Vistry Group Design Studio.

When you have finished with this leaflet please recycle it.

DS10731 / 09.24

First floor



Ground floor





Summerhill Gardens

Hailsham

Specification

bovishomes.co.uk

**Bovis
Homes** 

Summerhill Gardens

Hailsham

Use this guide to see what features are included in your new home. Your sales consultant will be happy to discuss the **Select** range of extras available.



Kitchen

3 bedroom
The Hazel
The Cypress
The Spruce
The Rose
4 bedroom
The Juniper
The Chestnut
The Aspen
The Orchid
5 bedroom
The Birch

Choice of Standard fitted kitchen (doors & worktops)	<input type="checkbox"/>	<input type="checkbox"/>	<input type="checkbox"/>	<input type="checkbox"/>	<input type="checkbox"/>	<input type="checkbox"/>	<input type="checkbox"/>	<input type="checkbox"/>	<input type="checkbox"/>
Choice of Premium fitted kitchen (doors & worktops)									<input type="checkbox"/>
Stainless steel sink and drainer (single and a half bowl) with chrome mixer tap	<input type="checkbox"/>	<input type="checkbox"/>	<input type="checkbox"/>	<input type="checkbox"/>	<input type="checkbox"/>	<input type="checkbox"/>	<input type="checkbox"/>	<input type="checkbox"/>	<input type="checkbox"/>
Stainless steel sink and drainer (single bowl) with chrome mixer tap in utility		<input type="checkbox"/>	<input type="checkbox"/>	<input type="checkbox"/>					<input type="checkbox"/>
Indesit hob (60cm) with built-in single underoven, with stainless steel splashback and curved glass chimney hood	<input type="checkbox"/>	<input type="checkbox"/>	<input type="checkbox"/>	<input type="checkbox"/>					
Hotpoint hob (75 cm) with built-in double high level oven, with glass splashback and curved glass chimney hood					<input type="checkbox"/>	<input type="checkbox"/>	<input type="checkbox"/>	<input type="checkbox"/>	
Bosch (75cm) hob with built-in double high level oven, with glass splashback and stainless steel pyramid chimney hood									<input type="checkbox"/>
Pendant light fitting	<input type="checkbox"/>	<input type="checkbox"/>	<input type="checkbox"/>	<input type="checkbox"/>	<input type="checkbox"/>	<input type="checkbox"/>	<input type="checkbox"/>	<input type="checkbox"/>	<input type="checkbox"/>
Pre-wired for under-unit lighting option	<input type="checkbox"/>	<input type="checkbox"/>	<input type="checkbox"/>	<input type="checkbox"/>	<input type="checkbox"/>	<input type="checkbox"/>	<input type="checkbox"/>	<input type="checkbox"/>	
LED under-unit flexible strip lighting									<input type="checkbox"/>
Fridge / freezer space	<input type="checkbox"/>	<input type="checkbox"/>	<input type="checkbox"/>	<input type="checkbox"/>					
Indesit Integrated 50 / 50 fridge freezer					<input type="checkbox"/>	<input type="checkbox"/>	<input type="checkbox"/>	<input type="checkbox"/>	<input type="checkbox"/>
Space for integrated dishwasher with plumbing and electrics	<input type="checkbox"/>	<input type="checkbox"/>	<input type="checkbox"/>	<input type="checkbox"/>	<input type="checkbox"/>	<input type="checkbox"/>	<input type="checkbox"/>	<input type="checkbox"/>	
Indesit Integrated dishwasher									<input type="checkbox"/>
Space for washing machine with plumbing and electrics in kitchen	<input type="checkbox"/>				<input type="checkbox"/>	<input type="checkbox"/>	<input type="checkbox"/>		
Space for washing machine with plumbing and electrics in utility		<input type="checkbox"/>	<input type="checkbox"/>	<input type="checkbox"/>					<input type="checkbox"/>

Bathrooms and en suite(s)

Ideal Standard contemporary white Concept Air sanitaryware	<input type="checkbox"/>	<input type="checkbox"/>	<input type="checkbox"/>	<input type="checkbox"/>	<input type="checkbox"/>	<input type="checkbox"/>	<input type="checkbox"/>	<input type="checkbox"/>	<input type="checkbox"/>
Ideal Standard close coupled WC to cloakroom	<input type="checkbox"/>	<input type="checkbox"/>	<input type="checkbox"/>	<input type="checkbox"/>	<input type="checkbox"/>	<input type="checkbox"/>	<input type="checkbox"/>	<input type="checkbox"/>	<input type="checkbox"/>
Handheld hair wash attachment	<input type="checkbox"/>	<input type="checkbox"/>	<input type="checkbox"/>	<input type="checkbox"/>	<input type="checkbox"/>	<input type="checkbox"/>	<input type="checkbox"/>	<input type="checkbox"/>	<input type="checkbox"/>
Ideal Standard low profile shower tray with glass enclosure to bedroom 1 en suite	<input type="checkbox"/>	<input type="checkbox"/>	<input type="checkbox"/>	<input type="checkbox"/>	<input type="checkbox"/>	<input type="checkbox"/>	<input type="checkbox"/>	<input type="checkbox"/>	<input type="checkbox"/>
Second shower en suite to selected bedrooms									<input type="checkbox"/>
Choice of standard Porcelanosa wall tiling (splashback, 450mm over bath, and full-height to shower cubicle)*	<input type="checkbox"/>	<input type="checkbox"/>	<input type="checkbox"/>	<input type="checkbox"/>	<input type="checkbox"/>	<input type="checkbox"/>	<input type="checkbox"/>	<input type="checkbox"/>	
Choice of standard Porcelanosa wall tiling (half-height to walls with fitted sanitary ware, half-height over bath, and full-height to shower cubicle)*									<input type="checkbox"/>
Chrome bezel LED bulkhead to bathroom and en suite(s)	<input type="checkbox"/>	<input type="checkbox"/>	<input type="checkbox"/>	<input type="checkbox"/>	<input type="checkbox"/>	<input type="checkbox"/>	<input type="checkbox"/>	<input type="checkbox"/>	<input type="checkbox"/>
Chrome towel warmer in bathroom and en suite(s)					<input type="checkbox"/>	<input type="checkbox"/>	<input type="checkbox"/>	<input type="checkbox"/>	<input type="checkbox"/>
Water waste heat recovery system	<input type="checkbox"/>	<input type="checkbox"/>	<input type="checkbox"/>	<input type="checkbox"/>	<input type="checkbox"/>	<input type="checkbox"/>	<input type="checkbox"/>	<input type="checkbox"/>	<input type="checkbox"/>

Bedrooms

Built in builders wardrobe to Bedroom 1	<input type="checkbox"/>	<input type="checkbox"/>	<input type="checkbox"/>	<input type="checkbox"/>	<input type="checkbox"/>	<input type="checkbox"/>	<input type="checkbox"/>	<input type="checkbox"/>	<input type="checkbox"/>
---	--------------------------	--------------------------	--------------------------	--------------------------	--------------------------	--------------------------	--------------------------	--------------------------	--------------------------

Doors and Windows

3 bedroom
The Hazel
The Cypress
The Spruce
The Rose
4 bedroom
The Juniper
The Chestnut
The Aspen
The Orchid
5 bedroom
The Birch

Front door with multi-point security locking system and security chain	<input type="checkbox"/>	<input type="checkbox"/>	<input type="checkbox"/>	<input type="checkbox"/>	<input type="checkbox"/>	<input type="checkbox"/>	<input type="checkbox"/>	<input type="checkbox"/>	<input type="checkbox"/>
Chrome plated front door numerals	<input type="checkbox"/>	<input type="checkbox"/>	<input type="checkbox"/>	<input type="checkbox"/>	<input type="checkbox"/>	<input type="checkbox"/>	<input type="checkbox"/>	<input type="checkbox"/>	<input type="checkbox"/>
PVCu double glazing to windows	<input type="checkbox"/>	<input type="checkbox"/>	<input type="checkbox"/>	<input type="checkbox"/>	<input type="checkbox"/>	<input type="checkbox"/>	<input type="checkbox"/>	<input type="checkbox"/>	<input type="checkbox"/>
Double glazed PVCu French doors	<input type="checkbox"/>	<input type="checkbox"/>	<input type="checkbox"/>	<input type="checkbox"/>		<input type="checkbox"/>	<input type="checkbox"/>		
Powder coated aluminium double glazed bi-fold doors					<input type="checkbox"/>	<input type="checkbox"/>	<input type="checkbox"/>		<input type="checkbox"/>
Internal cottage style pre-primed doors with brass satin finish handles	<input type="checkbox"/>	<input type="checkbox"/>	<input type="checkbox"/>	<input type="checkbox"/>	<input type="checkbox"/>	<input type="checkbox"/>	<input type="checkbox"/>	<input type="checkbox"/>	<input type="checkbox"/>
Paving outside French / bi-fold door and path to garage personnel door (where applicable)	<input type="checkbox"/>	<input type="checkbox"/>	<input type="checkbox"/>	<input type="checkbox"/>	<input type="checkbox"/>	<input type="checkbox"/>	<input type="checkbox"/>	<input type="checkbox"/>	<input type="checkbox"/>

General

PV solar panels	<input type="checkbox"/>	<input type="checkbox"/>	<input type="checkbox"/>	<input type="checkbox"/>	<input type="checkbox"/>	<input type="checkbox"/>	<input type="checkbox"/>	<input type="checkbox"/>	<input type="checkbox"/>
White painted walls and smooth white ceilings	<input type="checkbox"/>	<input type="checkbox"/>	<input type="checkbox"/>	<input type="checkbox"/>	<input type="checkbox"/>	<input type="checkbox"/>	<input type="checkbox"/>	<input type="checkbox"/>	<input type="checkbox"/>
Combined usb / double sockets in kitchen and bedroom 1	<input type="checkbox"/>	<input type="checkbox"/>	<input type="checkbox"/>	<input type="checkbox"/>	<input type="checkbox"/>	<input type="checkbox"/>	<input type="checkbox"/>	<input type="checkbox"/>	<input type="checkbox"/>
Multi-media point in living room	<input type="checkbox"/>	<input type="checkbox"/>	<input type="checkbox"/>	<input type="checkbox"/>	<input type="checkbox"/>	<input type="checkbox"/>	<input type="checkbox"/>	<input type="checkbox"/>	<input type="checkbox"/>
TV point to bedroom 1 and family room (where applicable)	<input type="checkbox"/>	<input type="checkbox"/>	<input type="checkbox"/>	<input type="checkbox"/>	<input type="checkbox"/>	<input type="checkbox"/>	<input type="checkbox"/>	<input type="checkbox"/>	<input type="checkbox"/>
Master telephone socket to sitting room and study (where applicable)	<input type="checkbox"/>	<input type="checkbox"/>	<input type="checkbox"/>	<input type="checkbox"/>	<input type="checkbox"/>	<input type="checkbox"/>	<input type="checkbox"/>	<input type="checkbox"/>	<input type="checkbox"/>
Gas central heating with wall mounted combi-boiler, programme selector and room thermostat(s)	<input type="checkbox"/>	<input type="checkbox"/>	<input type="checkbox"/>	<input type="checkbox"/>	<input type="checkbox"/>	<input type="checkbox"/>	<input type="checkbox"/>	<input type="checkbox"/>	
Gas central heating with wall mounted heat only boiler, programme selector, room thermostat, and hot water cylinder in upstairs cupboard									<input type="checkbox"/>
Thermostatic valves to all radiators (with the exception of rooms with separate thermostat control)	<input type="checkbox"/>	<input type="checkbox"/>	<input type="checkbox"/>	<input type="checkbox"/>	<input type="checkbox"/>	<input type="checkbox"/>	<input type="checkbox"/>	<input type="checkbox"/>	<input type="checkbox"/>
Fitted external tap	<input type="checkbox"/>	<input type="checkbox"/>	<input type="checkbox"/>	<input type="checkbox"/>	<input type="checkbox"/>	<input type="checkbox"/>	<input type="checkbox"/>	<input type="checkbox"/>	<input type="checkbox"/>
External light fitted to front porch and wiring for external light to rear door	<input type="checkbox"/>	<input type="checkbox"/>	<input type="checkbox"/>	<input type="checkbox"/>	<input type="checkbox"/>	<input type="checkbox"/>	<input type="checkbox"/>	<input type="checkbox"/>	<input type="checkbox"/>
Mains wired smoke detectors with battery back-up	<input type="checkbox"/>	<input type="checkbox"/>	<input type="checkbox"/>	<input type="checkbox"/>	<input type="checkbox"/>	<input type="checkbox"/>	<input type="checkbox"/>	<input type="checkbox"/>	<input type="checkbox"/>
Battery powered Carbon Monoxide detector (wall mounted) to be provided for each floor	<input type="checkbox"/>	<input type="checkbox"/>	<input type="checkbox"/>	<input type="checkbox"/>	<input type="checkbox"/>	<input type="checkbox"/>	<input type="checkbox"/>	<input type="checkbox"/>	<input type="checkbox"/>
Power and lighting to 'on plot' garage (where applicable)	<input type="checkbox"/>	<input type="checkbox"/>	<input type="checkbox"/>	<input type="checkbox"/>	<input type="checkbox"/>	<input type="checkbox"/>	<input type="checkbox"/>	<input type="checkbox"/>	<input type="checkbox"/>
Enclosed fenced rear garden, and garden gate (where applicable)	<input type="checkbox"/>	<input type="checkbox"/>	<input type="checkbox"/>	<input type="checkbox"/>	<input type="checkbox"/>	<input type="checkbox"/>	<input type="checkbox"/>	<input type="checkbox"/>	<input type="checkbox"/>
Landscaped front gardens	<input type="checkbox"/>	<input type="checkbox"/>	<input type="checkbox"/>	<input type="checkbox"/>	<input type="checkbox"/>	<input type="checkbox"/>	<input type="checkbox"/>	<input type="checkbox"/>	<input type="checkbox"/>
NHBC Buildmark cover	<input type="checkbox"/>	<input type="checkbox"/>	<input type="checkbox"/>	<input type="checkbox"/>	<input type="checkbox"/>	<input type="checkbox"/>	<input type="checkbox"/>	<input type="checkbox"/>	<input type="checkbox"/>
First two years' customer service support from Bovis Homes	<input type="checkbox"/>	<input type="checkbox"/>	<input type="checkbox"/>	<input type="checkbox"/>	<input type="checkbox"/>	<input type="checkbox"/>	<input type="checkbox"/>	<input type="checkbox"/>	<input type="checkbox"/>

■ Fitted as standard - included in the property
* Subject to stage of construction

So much choice...

Part of the excitement of buying a new home is the thrill of being the first person to live in the property and having a brand new contemporary kitchen and modern bathroom. Our premium brand partners ensure that all of our fixtures and fittings comply with the latest Government building regulations and only branded appliances are installed in your new home.

Once you know what specification comes included, you'll have a choice from our specially selected tiles for your kitchen and bathrooms, as well as kitchen worktops and cupboard doors. You can then use the Bovis Homes **Select** brochure to add the finishing touches to your home to make it extra special for you!

From personalising your bathrooms with stunning ceramics, or adding smooth sliding wardrobes to your master bedroom, there are a wide range of additional options and upgrades available.

The availability of items is subject to the stage of build, and can vary by development and house type. Our sales consultants will be happy to provide guidance.



The specification shown is correct at the time of production. Bovis Homes is continually reviewing and updating the specification on all house / apartment types and therefore reserves the right to change specification details. Photographs depict typical Bovis Homes interiors and may include optional upgrades. For full details regarding the current specification and finishes, please speak to our sales consultant.

Produced by the Vistry Group Design Studio.

When you have finished with this leaflet please recycle it.

DS10731 / 09.24

**Bovis
Homes** 