

# Meadow View

Crowborough





# Meadow View

Crowborough

A taste of local life

[bovishomes.co.uk](http://bovishomes.co.uk)

**Bovis  
Homes** 





# Welcome to Meadow View

In an Area of Outstanding Natural Beauty just 35 miles from London and within easy reach of the south coast, this exciting new development is on the edge of the historic East Sussex town of Crowborough

The town has a range of local shops and services, as well as pubs, restaurants, schools, medical, leisure and sports facilities. Take a 20-minute drive for shopping centres, theatres, cinemas and much more in Royal Tunbridge Wells.

Crowborough is in the High Weald Area of Outstanding Natural Beauty and less than 10 miles from the beautiful 6,500-acre Ashdown Forest, (the fictional home of Winnie-the-Pooh). Closer to home is the scenic Crowborough Country Park, a 16-acre nature reserve with wildlife, woodland and water.

The A26 through Crowborough goes north to Royal Tunbridge Wells, 8 miles away and south east via the A22 for Uckfield, 9 Miles and Brighton, 26 miles. From Royal Tunbridge Wells pick up the A21, for junction 5 of the M25 and the M26. It's less than 1 mile to Crowborough Railway

Station from where trains run direct to London Bridge, taking around 1 hour. Bus services also operate regularly from Crowborough to Brighton and Royal Tunbridge Wells.

Our range of 2, 3, 4 and 5 bedroom homes embrace contemporary design, while retaining classic architecture and traditional build quality. They include popular features such as open-plan living areas, stylish fitted kitchens, bi-fold doors and spacious master bedrooms with en suites.

So, if you're looking for a quality new home close to the countryside, but convenient for London and the south coast, your search ends here.



# The perfect position

## Education for everyone

There's a selection of primary schools in Crowborough with the nearest to Meadow View being Jarvis Brook Primary, just a 3-minute walk away. Ashdown Primary and Ashdown Junior Schools are less than 1 mile.

For senior pupils Beacon Academy is just over 1 mile, or a 30-minute walk, and caters for students aged from 11 to 19, with its own sixth form. There's a choice of independent prep schools in the area, including Skippers Hill Manor Prep School, 5-miles away and several more in Royal Tunbridge Wells.

### Ashdown Forest

8.6 miles | 16 mins drive



### Sir Henry Fermor CofE Primary School

1.3 miles | 4 mins drive



### Crowborough Leisure Centre

2 miles | 7 mins drive



## Meadow View

### Royal Victoria Place Shopping Centre

8.5 miles | 19 mins drive



### Crowborough Country Park

1 mile | 20 mins walk





### Beacon Academy

1.3 miles | 28 mins walk

28  
mins



### Jarvis Brook Primary School

0.2 miles | 3 mins walk

3  
mins



### Waishes Park

0.6 miles | 12 mins walk

12  
mins





# Personalise your new home with upgrades and extras from our **Select** range, where the choice is yours

Customise your kitchen with stylish worktops and the latest modern appliances and personalise your bathrooms with stunning ceramics.

Using the **Select** range there are various options allowing you to create your perfect property which is truly unique to you.

You can personalise every space in your home from kitchen cupboards and electrics to built in wardrobes and if you have a preference for flooring, you can select from our diverse range that includes luxurious carpets, stylish Karndean, ceramics and vinyl.

Pick up a **Select** brochure sales consultant today to find an extensive list of items available, including:

- Quartz or Granite worktops
- A selection of kitchen packages including integrated appliances
- Flooring
- Built-in wardrobes
- Upgraded tiling and many more!

The choice is yours - with **Select**.



# Purchase assistance schemes

Wherever you are in the home-buying market – a first-time buyer, looking to step up the property ladder or a downsizer – we have a variety of great purchase assistance schemes!

## Smooth Move

Smooth Move is our scheme for all existing property owners to save time and money. We deal with the estate agents to sell your home and even pay the estate agents' fees!

## Armed Forces **TRINITY**

Helping members of the Armed Forces to own a home with assistance from Bovis Homes, the government and the Ministry of Defence.

## Deposit Unlock



With Deposit Unlock, whether you are a first time or next time buyer, you could purchase a new Bovis Home with just a 5% deposit up to the value of £750,000!

## Home Exchange

With Home Exchange you can have peace of mind knowing that we are your guaranteed buyer, meaning you'll have a chain-free move without the estate agents' fees.



Scan me  
for directions



# Meadow View

Walshes Road,  
Crowborough TN6 3RE  
01892 346770

## From Royal Tunbridge Wells

- Head west on Crescent Road / A264 towards Mount Pleasant Road
- Continue to follow A264
- Follow A26 to Eridge Rd in East Sussex
- Take Green Lane to Walshes Road in Crowborough

Cover photograph of surrounding local area / countryside. Not view from the development.  
The streetscene has been produced for illustrative purposes only, please check the details of the homes you are interested in with the sales consultant.

### Vistry South East region

Linden House, Guards Avenue, Caterham, Surrey CR3 5XL. Telephone: 01883 334 400

Produced by the Vistry Group Design Studio.

When you have finished with this leaflet please recycle it.

DS14016 / 06.25



# Meadow View

## Crowborough

### 2 bedroom homes

 The Daisy

### 3 bedroom homes

 The Cypress

 The Spruce

 The Poppy

 The Lily

 The Rose

**C** custom build plot  
**v** visitor space  
**ss** substation

### 4 bedroom homes

 The Aspen

 The Chestnut

 The Juniper

 The Mulberry

 The Peony

 The Leverton

 The Orchid

### 5 bedroom home

 The Birch

### Pre-sold homes

 1 bedroom home

 2 bedroom home

 3 bedroom home



This plan has been produced for home identification purposes only and may be subject to change. Please check the details of your chosen plot and house type with the sales consultant. Development layout plan correct at time of going to print.

Produced by the Vistry Group Design Studio.  
 DSI4016 / 06.25





# The Daisy

2 bedroom home

[bovishomes.co.uk](https://bovishomes.co.uk)

**Bovis  
Homes** 

# The Daisy

## 2 bedroom home

Ground floor	metres	feet / inches
Kitchen / dining area	4.84 x 2.12	15' 11" x 7' 0"
Sitting room	4.20 x 3.58	13' 9" x 11' 9"

First floor	metres	feet / inches
Bedroom 1	4.20 x 3.58	13' 9" x 11' 9"
Bedroom 2	4.20 x 2.76	13' 9" x 9' 1"

h	hob	ws	washing machine space
ovn	oven	cup'd	cupboard
ffzs	fridge freezer space	◀ ▶	measuring points
ds	dishwasher space		

### The Daisy | Crowborough |

The floorplan has been produced for illustrative purposes only. Room sizes shown are between arrow points as indicated on plan. The dimensions have tolerances of + or -50mm and should not be used other than for general guidance. If specific dimensions are required, enquiries should be made to the sales consultant. The floor plans shown are not to scale. Measurements are based on the original drawings. Slight variations may occur during construction.

The illustrations shown are computer generated impressions of how the property may look and are indicative only. External details or finishes may vary on individual plots and homes may be built in either detached or attached styles depending on the development layout. Exact specifications, window styles and whether a property is left or right-handed may differ from plot to plot. Please speak to our sales consultant for specific plot details.

\* Window applies to selected plots only. Please speak to our sales consultant for further details.

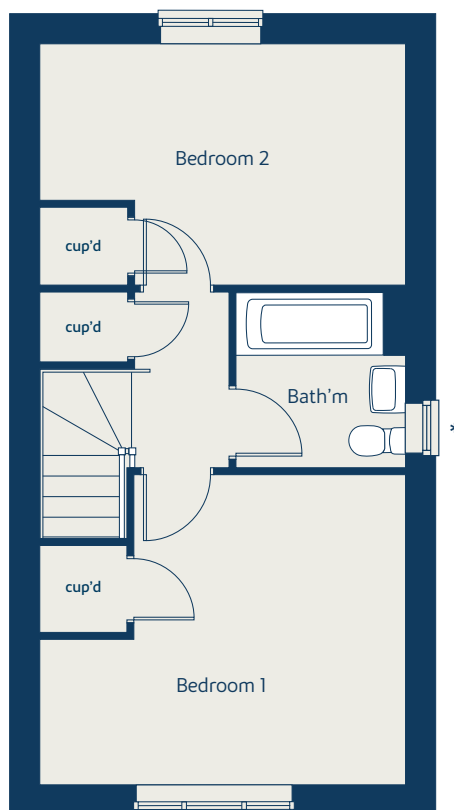
① Alternative layout applies to plot 15 only. Please see sales consultant for further details.

Produced by the Vistry Group Design Studio.

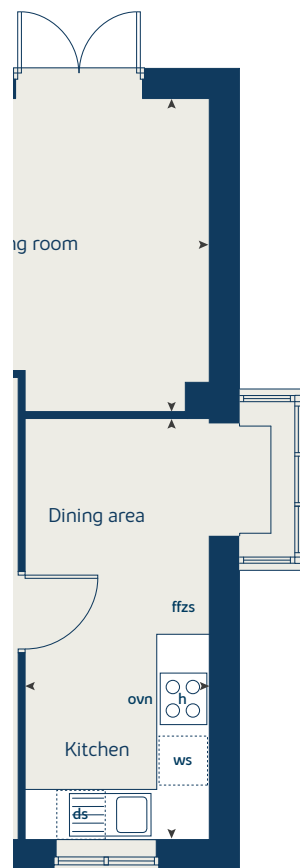
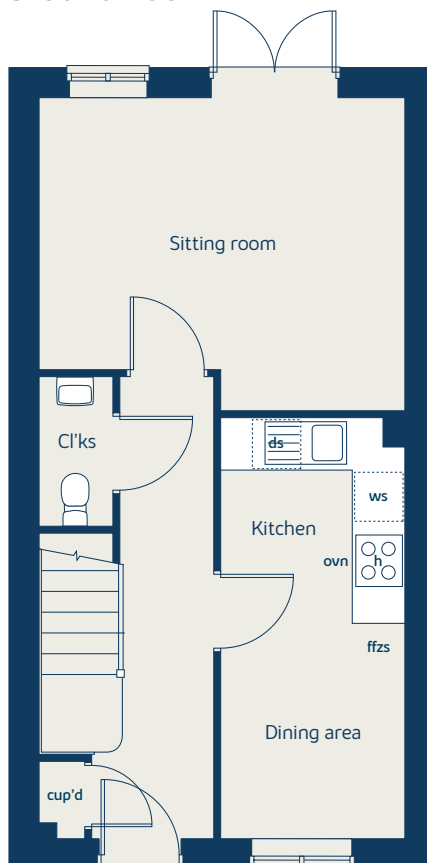
When you have finished with this leaflet please recycle it.

Crowborough DS14016 / 05.25

### First floor



### Ground floor







# The Holly

2 bedroom home

[bovishomes.co.uk](https://bovishomes.co.uk)

**Bovis  
Homes** 

# The Holly

## 2 bedroom home

Ground floor	metres	feet / inches
Kitchen / dining room	4.74 x 3.24	15' 6" x 10' 7"
Sitting room	3.72 x 3.67	12' 2" x 12' 0"

### First floor

Bedroom 1	3.59 x 3.20	11' 10" x 10' 6"
Bedroom 2	4.74 x 3.39	15' 7" x 11' 2"

ovn	oven	ldr	larder
h	hob	ffzs	fridge freezer space
ds	dishwasher space	cup'd	cupboard
ws	washing machine space	◀ ▶	measuring points

### The Holly | X204 01 Crowborough |

The floorplan has been produced for illustrative purposes only. Room sizes shown are between arrow points as indicated on plan. The dimensions have tolerances of + or -50mm and should not be used other than for general guidance. If specific dimensions are required, enquiries should be made to the sales consultant. The floor plans shown are not to scale. Measurements are based on the original drawings. Slight variations may occur during construction.

The illustrations shown are computer generated impressions of how the property may look and are indicative only. External details or finishes may vary on individual plots and homes may be built in either detached or attached styles depending on the development layout. Exact specifications, window styles and whether a property is left or right-handed may differ from plot to plot. Please speak to our sales consultant for specific plot details.

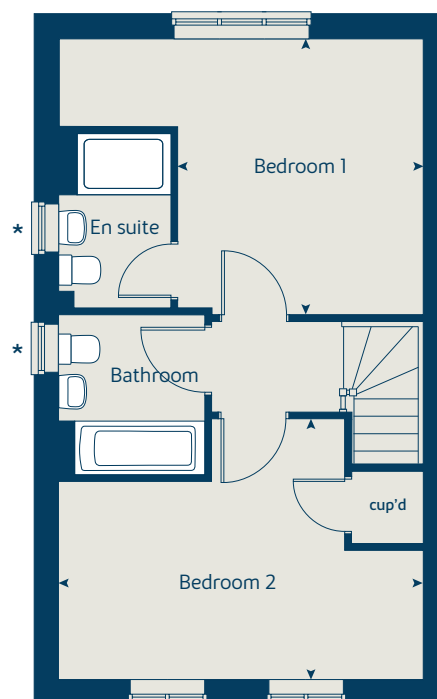
\* Windows apply to selected plots only. Please see sales consultant for further details.

Produced by the Vistry Group Design Studio.

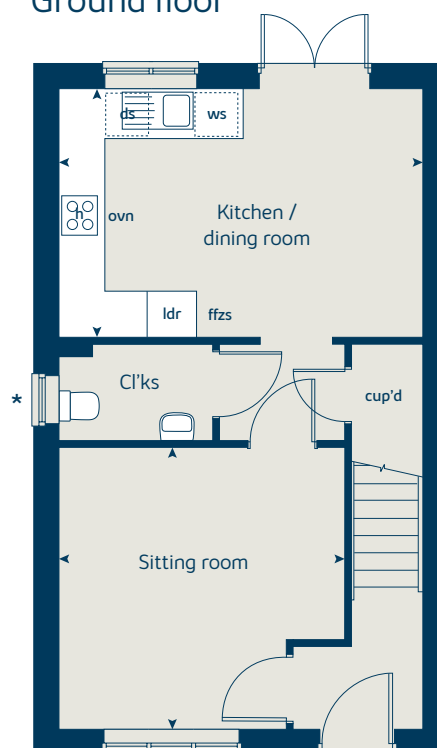
When you have finished with this leaflet please recycle it.

DS04976 / 08.24

### First floor



### Ground floor







# The Poppy

3 bedroom home

[bovishomes.co.uk](http://bovishomes.co.uk)

**Bovis  
Homes** 

# The Poppy

## 3 bedroom home

Ground floor	metres	feet / inches
Kitchen / dining area	4.78 x 2.91	15' 8" x 9' 6"
Sitting room	5.09 x 3.63	16' 9" x 11' 11"

### First floor

Bedroom 1	3.66 x 2.86	12' 0" x 9' 4"
Bedroom 2	2.85 x 2.37	9' 4" x 7' 9"
Bedroom 3	3.65 x 2.15	12' 0" x 7' 1"

h	hob	ws	washing machine space
ovn	oven	cup'd	cupboard
ffzs	fridge freezer space	◀ ▶	measuring points
ds	dishwasher space		

### The Poppy | Crowborough |

The floorplan has been produced for illustrative purposes only. Room sizes shown are between arrow points as indicated on plan. The dimensions have tolerances of + or -50mm and should not be used other than for general guidance. If specific dimensions are required, enquiries should be made to the sales consultant. The floor plans shown are not to scale. Measurements are based on the original drawings. Slight variations may occur during construction.

The illustrations shown are computer generated impressions of how the property may look and are indicative only. External details or finishes may vary on individual plots and homes may be built in either detached or attached styles depending on the development layout. Exact specifications, window styles and whether a property is left or right-handed may differ from plot to plot. Please speak to our sales consultant for specific plot details.

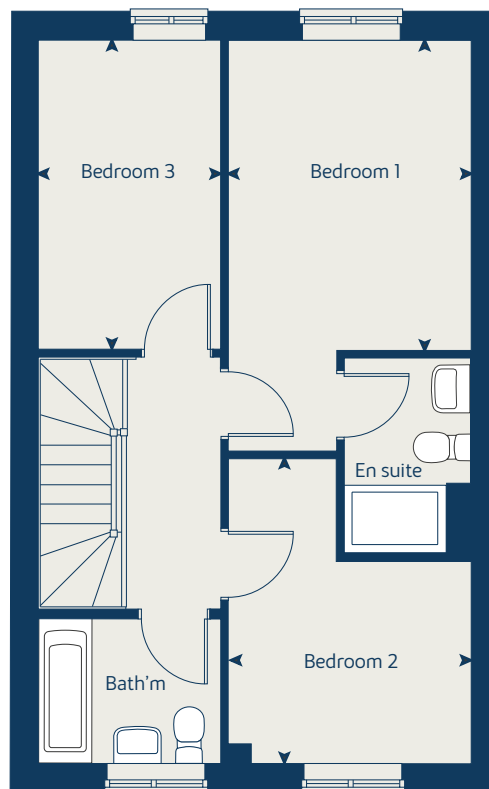
Produced by the Vistry Group Design Studio.

When you have finished with this leaflet please recycle it.

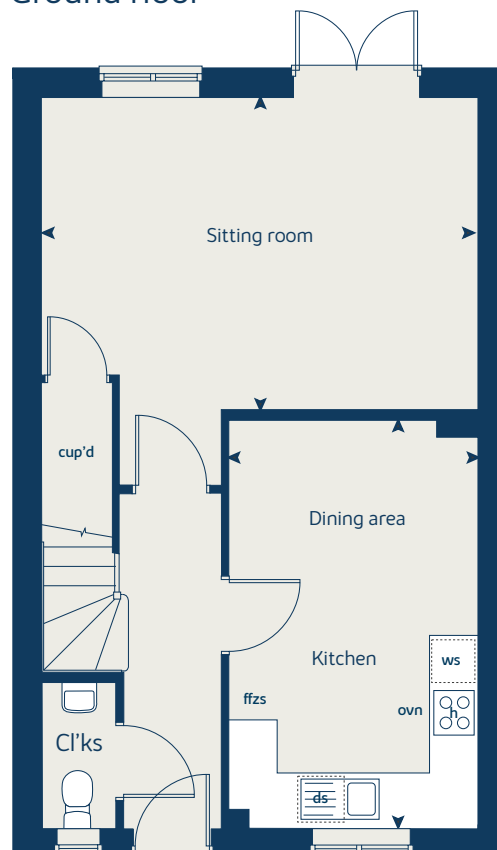
Crowborough DSI4016 / 05.25



### First floor



### Ground floor





# The Lily

3 bedroom home

[bovishomes.co.uk](http://bovishomes.co.uk)

**Bovis  
Homes** 



# The Lily

## 3 bedroom home

Ground floor	metres	feet / inches
Kitchen / dining area	5.59 x 2.90	18' 4" x 9' 6"
Sitting room	5.59 x 3.33	18' 4" x 10' 11"

### First floor

Bedroom 1	3.43 x 3.39	11' 3" x 11' 2"
Bedroom 2	3.34 x 2.94	10' 11" x 9' 8"
Bedroom 3	2.99 x 2.56	9' 10" x 8' 5"

h	hob	ws	washing machine space
ovn	oven	cup'd	cupboard
ffzs	fridge freezer space	◀ ▶	measuring points
ds	dishwasher space		

### The Lily | Custom build Crowborough |

The floorplan has been produced for illustrative purposes only. Room sizes shown are between arrow points as indicated on plan. The dimensions have tolerances of + or -50mm and should not be used other than for general guidance. If specific dimensions are required, enquiries should be made to the sales consultant. The floor plans shown are not to scale. Measurements are based on the original drawings. Slight variations may occur during construction.

The illustrations shown are computer generated impressions of how the property may look and are indicative only. External details or finishes may vary on individual plots and homes may be built in either detached or attached styles depending on the development layout. Exact specifications, window styles and whether a property is left or right-handed may differ from plot to plot. Please speak to our sales consultant for specific plot details.

\* Utility door omitted to plot 4 only. Please see sales consultant for further details.

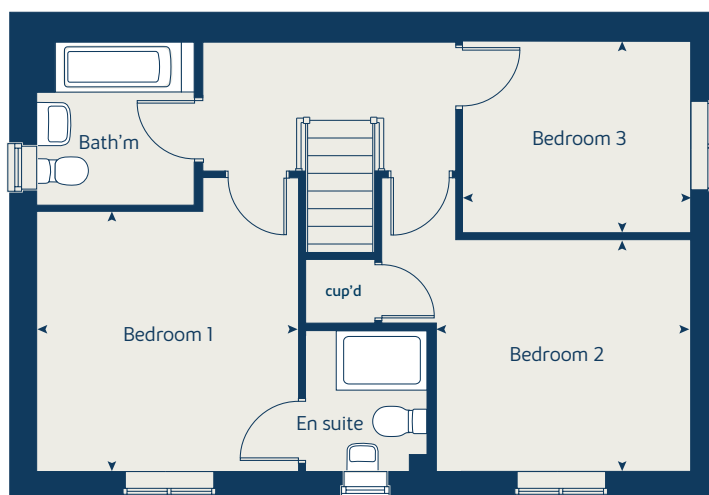
\*\* Bay window omitted to plot 10 only. Please see sales consultant for further details.

Produced by the Vistry Group Design Studio.

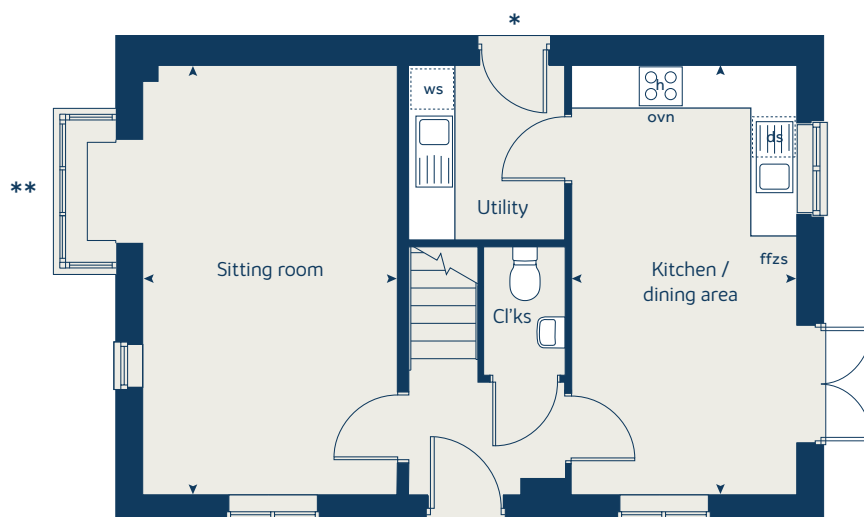
When you have finished with this leaflet please recycle it.

Crowborough DSI4016 / 05.25

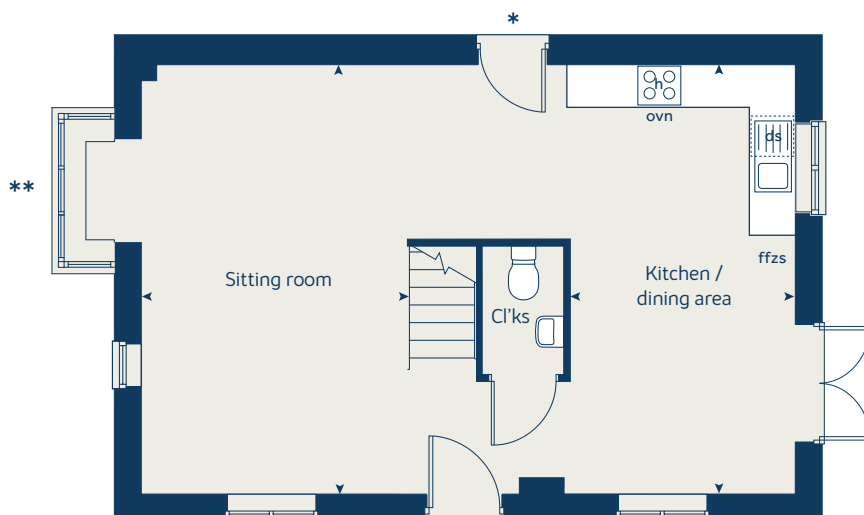
### First floor



### Ground floor - Option 1



### Ground floor - Option 2





# The Rose

3 bedroom home

[bovishomes.co.uk](http://bovishomes.co.uk)

**Bovis  
Homes** 

# The Rose

## 3 bedroom home

Ground floor	metres	feet / inches
Kitchen / dining area	5.59 x 2.90	18' 4" x 9' 6"
Sitting room	5.59 x 3.33	18' 4" x 10' 11"

### First floor

Bedroom 1	3.43 x 3.39	11' 3" x 11' 2"
Bedroom 2	3.34 x 2.94	10' 11" x 9' 8"
Bedroom 3	2.99 x 2.56	9' 10" x 8' 5"

h	hob	ws	washing machine space
ovn	oven	cup'd	cupboard
ffzs	fridge freezer space	◀ ▶	measuring points
ds	dishwasher space		

### The Rose | Crowborough |

The floorplan has been produced for illustrative purposes only. Room sizes shown are between arrow points as indicated on plan. The dimensions have tolerances of + or -50mm and should not be used other than for general guidance. If specific dimensions are required, enquiries should be made to the sales consultant. The floor plans shown are not to scale. Measurements are based on the original drawings. Slight variations may occur during construction.

The illustrations shown are computer generated impressions of how the property may look and are indicative only. External details or finishes may vary on individual plots and homes may be built in either detached or attached styles depending on the development layout. Exact specifications, window styles and whether a property is left or right-handed may differ from plot to plot. Please speak to our sales consultant for specific plot details.

\* Utility door omitted to plot 4 only. Please see sales consultant for further details.

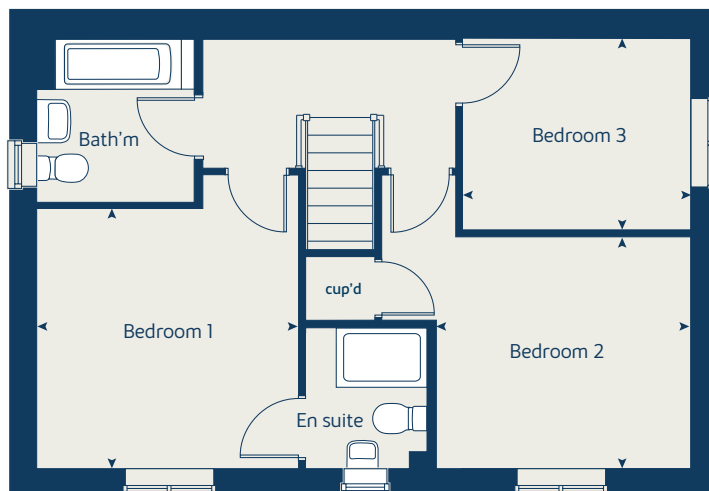
\*\* Bay window omitted to plot 10 only. Please see sales consultant for further details.

Produced by the Vistry Group Design Studio.

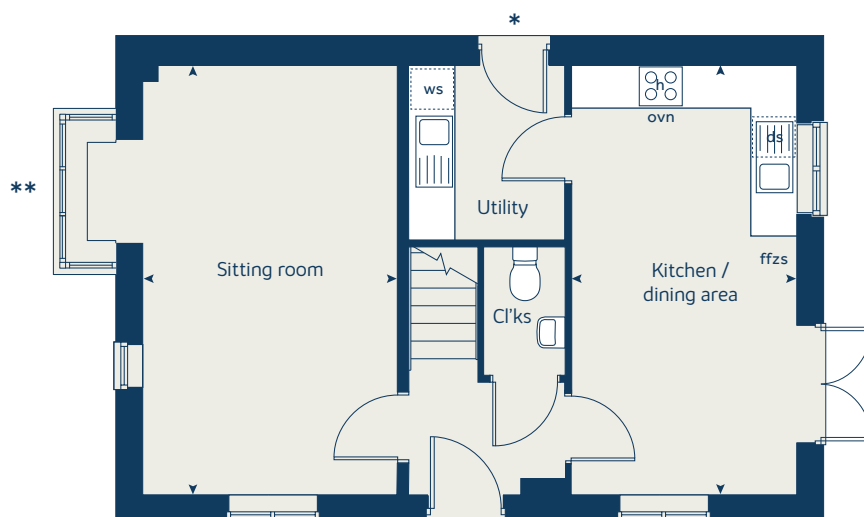
When you have finished with this leaflet please recycle it.

Crowborough DSI4016 / 05.25

### First floor



### Ground floor







# The Cypress

3 bedroom home

[bovishomes.co.uk](http://bovishomes.co.uk)

**Bovis  
Homes** 

# The Cypress

## 3 bedroom home

Ground floor	metres	feet / inches
Kitchen / dining area	5.57 x 3.18	18' 2" x 10' 4"
Sitting room	4.46 x 3.45	14' 6" x 11' 3"

### First floor

Bedroom 1	4.16 x 3.32	13' 6" x 10' 8"
Bedroom 2	3.31 x 2.87	10' 8" x 9' 4"
Bedroom 3	3.57 x 2.21	11' 7" x 7' 2"

ovn	oven	ffzs	fridge freezer space
h	hob	cup'd	cupboard
ds	dishwasher space	◀ ▶	measuring points
ws	washing machine space		

### The Cypress | X308 (IF) 01 Crowborough |

The floorplan has been produced for illustrative purposes only. Room sizes shown are between arrow points as indicated on plan. The dimensions have tolerances of + or -50mm and should not be used other than for general guidance. If specific dimensions are required, enquiries should be made to the sales consultant. The floor plans shown are not to scale. Measurements are based on the original drawings. Slight variations may occur during construction.

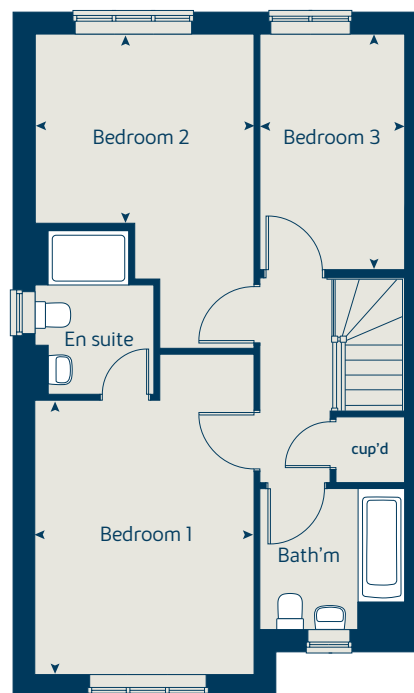
The illustrations shown are computer generated impressions of how the property may look and are indicative only. External details or finishes may vary on individual plots and homes may be built in either detached or attached styles depending on the development layout. Exact specifications, window styles and whether a property is left or right-handed may differ from plot to plot. Please speak to our sales consultant for specific plot details.

Produced by the Vistry Group Design Studio.

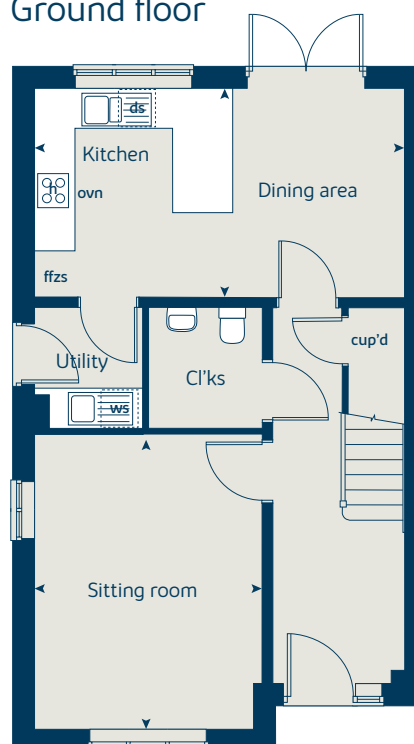
When you have finished with this leaflet please recycle it.

DS04976 / 08.24

### First floor



### Ground floor







# The Hazel

3 bedroom home

[bovishomes.co.uk](http://bovishomes.co.uk)

**Bovis  
Homes** 



# The Hazel

## 3 bedroom home

Ground floor	metres	feet / inches
Kitchen / dining room	5.24 x 3.03	17' 0" x 9' 9"
Sitting room	4.18 x 3.71	13' 8" x 12' 0"

### First floor

Bedroom 1	3.59 x 3.33	11' 7" x 10' 9"
Bedroom 2	2.95 x 2.74	9' 3" x 9' 0"
Bedroom 3	3.53 x 2.19	11' 5" x 7' 2"

ovn	oven	ffzs	fridge freezer space
h	hob	cup'd	cupboard
ds	dishwasher space	◀ ▶	measuring points
ws	washing machine space		

### The Hazel | X305 01 Crowborough |

The floorplan has been produced for illustrative purposes only. Room sizes shown are between arrow points as indicated on plan. The dimensions have tolerances of + or -50mm and should not be used other than for general guidance. If specific dimensions are required, enquiries should be made to the sales consultant. The floor plans shown are not to scale. Measurements are based on the original drawings. Slight variations may occur during construction.

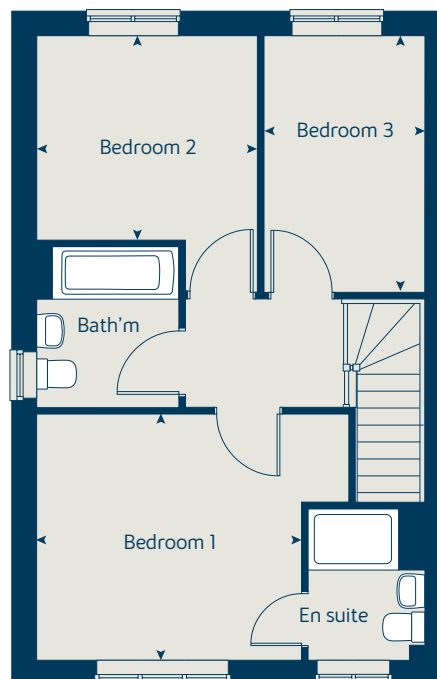
The illustrations shown are computer generated impressions of how the property may look and are indicative only. External details or finishes may vary on individual plots and homes may be built in either detached or attached styles depending on the development layout. Exact specifications, window styles and whether a property is left or right-handed may differ from plot to plot. Please speak to our sales consultant for specific plot details.

Produced by the Vistry Group Design Studio.

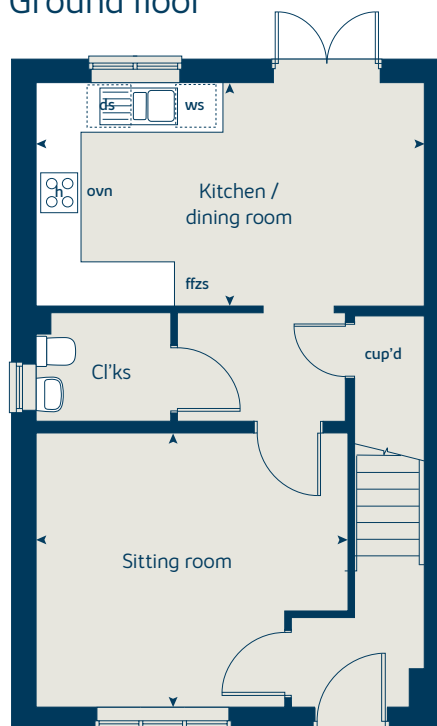
When you have finished with this leaflet please recycle it.

DS04976 / 08.24

### First floor



### Ground floor





# The Spruce

3 bedroom home

[bovishomes.co.uk](https://bovishomes.co.uk)

**Bovis  
Homes** 

# The Spruce

## 3 bedroom home

Ground floor	metres	feet / inches
Kitchen	3.16 x 2.69	10' 4" x 8' 8"
Dining area	3.14 x 2.36	10' 3" x 7' 7"
Sitting room	5.57 x 3.37	18' 2" x 11' 0"

First floor		
Bedroom 1	3.35 x 3.35	11' 0" x 11' 0"
Bedroom 2	3.59 x 3.26	11' 7" x 10' 6"
Bedroom 3	3.63 x 2.17	11' 9" x 7' 11"

ovn	oven	ffzs	fridge freezer space
h	hob	cup'd	cupboard
ds	dishwasher space	◀ ▶	measuring points
ws	washing machine space		

**The Spruce | X307 (IF) 01 Crowborough |**

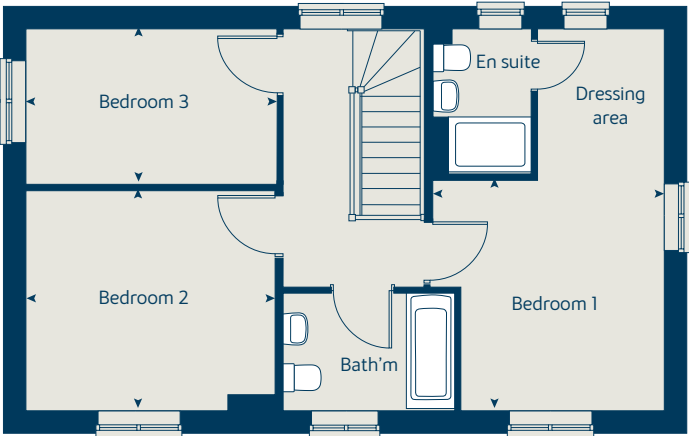
The floorplan has been produced for illustrative purposes only. Room sizes shown are between arrow points as indicated on plan. The dimensions have tolerances of + or -50mm and should not be used other than for general guidance. If specific dimensions are required, enquiries should be made to the sales consultant. The floor plans shown are not to scale. Measurements are based on the original drawings. Slight variations may occur during construction.

The illustrations shown are computer generated impressions of how the property may look and are indicative only. External details or finishes may vary on individual plots and homes may be built in either detached or attached styles depending on the development layout. Exact specifications, window styles and whether a property is left or right-handed may differ from plot to plot. Please speak to our sales consultant for specific plot details.

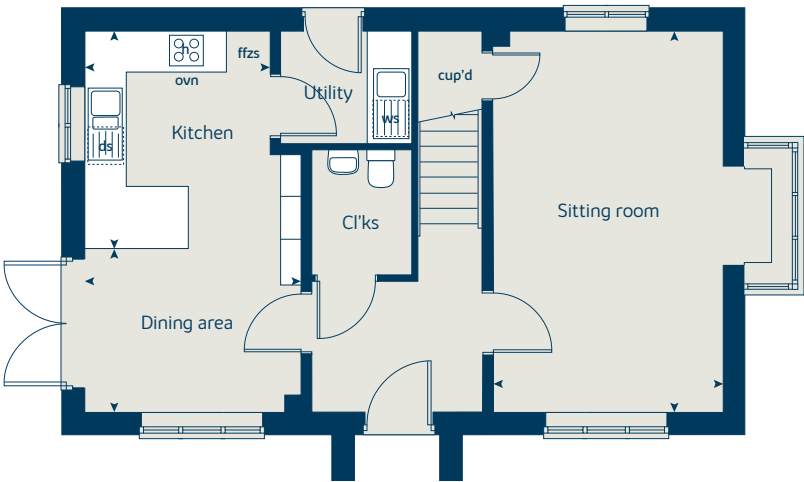
① Alternative layout applies to selected plots only. Please see sales consultant for further details.

Produced by the Vistry Group Design Studio.  
When you have finished with this leaflet please recycle it.  
DS04976 / 08.24

First floor



Ground floor







# The Leverton

4 bedroom home

[bovishomes.co.uk](http://bovishomes.co.uk)

**Bovis  
Homes** 

# The Leverton

4 bedroom home

Ground floor	metres	feet / inches
Kitchen	2.99 x 2.80	9' 9" x 8' 11"
Dining area	3.93 x 2.80	13' 2" x 9' 3"
Living room	4.81 x 3.39	15' 10" x 11' 2"
Study	3.39 x 1.82	11' 2" x 6' 0"

## First floor

Bedroom 1	4.39 x 3.47	14' 4" x 9' 6"
Bedroom 2	3.35 x 3.15	11' 8" x 10' 3"
Bedroom 3	3.37 x 2.87	11' 1" x 9' 5"
Bedroom 4	3.30 x 2.07	10' 10" x 6' 10"

h	hob	ws	washing machine space
ovn	oven	cup'd	cupboard
ffzs	fridge freezer space	◀ ▶	measuring points
ds	dishwasher space		

## The (Leverton) | Custom build Crowborough |

The floorplan has been produced for illustrative purposes only. Room sizes shown are between arrow points as indicated on plan. The dimensions have tolerances of + or -50mm and should not be used other than for general guidance. If specific dimensions are required, enquiries should be made to the sales consultant. The floor plans shown are not to scale. Measurements are based on the original drawings. Slight variations may occur during construction.

The illustrations shown are computer generated impressions of how the property may look and are indicative only. External details or finishes may vary on individual plots and homes may be built in either detached or attached styles depending on the development layout. Exact specifications, window styles and whether a property is left or right-handed may differ from plot to plot. Please speak to our sales consultant for specific plot details.

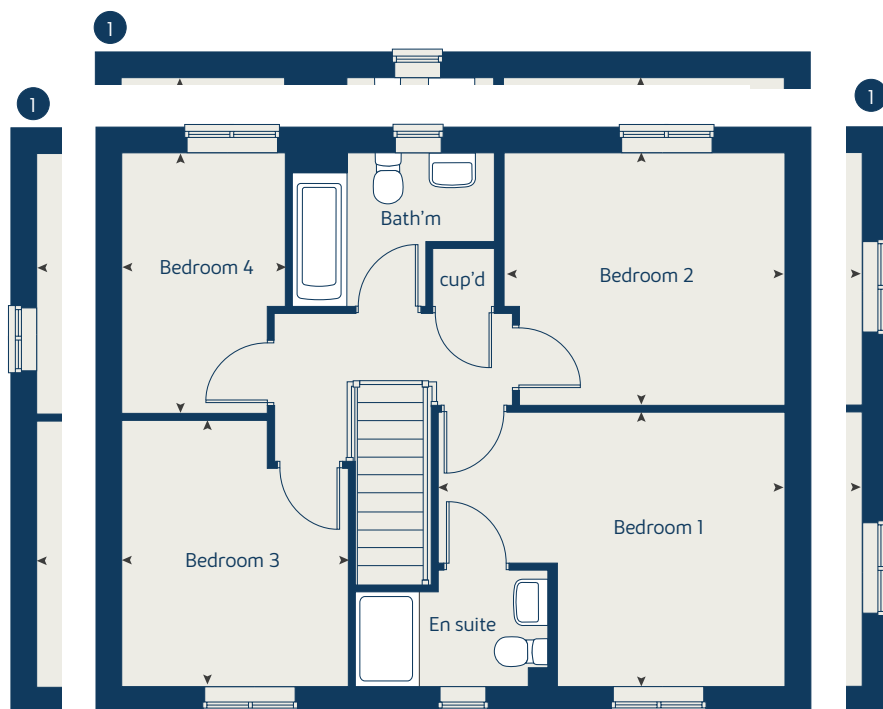
- 1 Alternative layouts apply to selected plots only.  
Please see sales consultant for further details

Produced by the Vistry Group Design Studio.

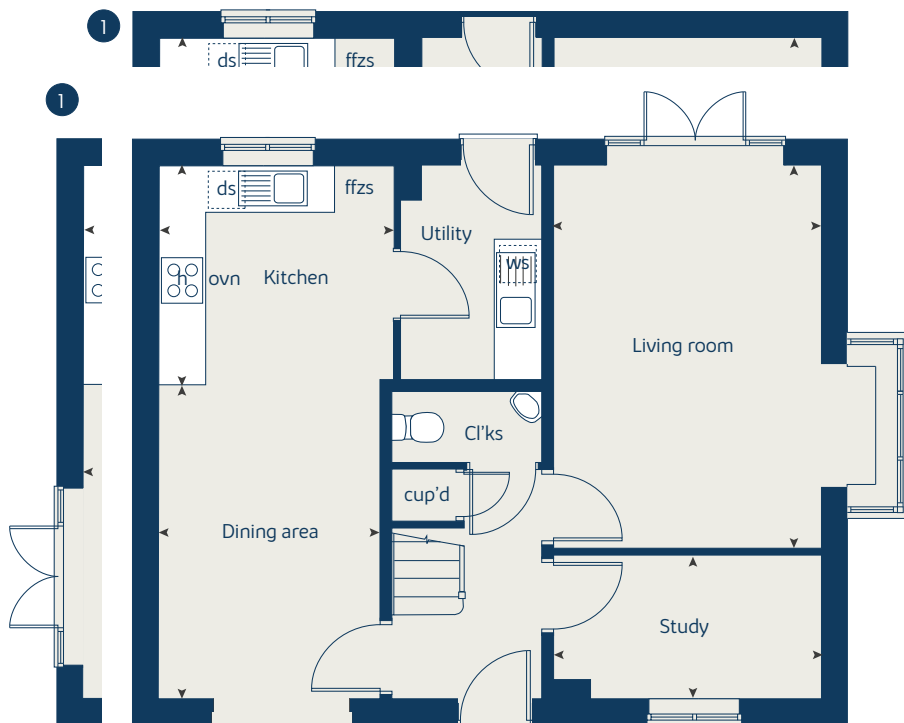
When you have finished with this leaflet please recycle it.

Crowborough DSI4016 / 05.25

## First floor



## Ground floor





# The Peony

4 bedroom home

[bovishomes.co.uk](http://bovishomes.co.uk)

**Bovis  
Homes** 



# The Peony

## 4 bedroom home

Ground floor	metres	feet / inches
Kitchen / family/dining area	8.07 x 3.34	26' 6" x 10' 9"
Sitting room	4.83 x 3.48	15' 10" x 11' 5"
Study	2.40 x 2.35	7' 11" x 7' 9"

### First floor

Bedroom 1	4.29 x 3.38	14' 1" x 11' 1"
Bedroom 2	4.31 x 2.73	14' 2" x 9' 0"
Bedroom 3	3.35 x 2.87	11' 0" x 9' 5"
Bedroom 4	3.32 x 2.81	10' 11" x 9' 3"

h	hob	ws	washing machine space
ovn	oven	tds	tumble dryer space
ffzs	fridge freezer space	cup'd	cupboard
ds	dishwasher space	◀ ▶	measuring points

### The Peony | Custom build Crowborough |

The floorplan has been produced for illustrative purposes only. Room sizes shown are between arrow points as indicated on plan. The dimensions have tolerances of + or -50mm and should not be used other than for general guidance. If specific dimensions are required, enquiries should be made to the sales consultant. The floor plans shown are not to scale. Measurements are based on the original drawings. Slight variations may occur during construction.

The illustrations shown are computer generated impressions of how the property may look and are indicative only. External details or finishes may vary on individual plots and homes may be built in either detached or attached styles depending on the development layout. Exact specifications, window styles and whether a property is left or right-handed may differ from plot to plot. Please speak to our sales consultant for specific plot details.

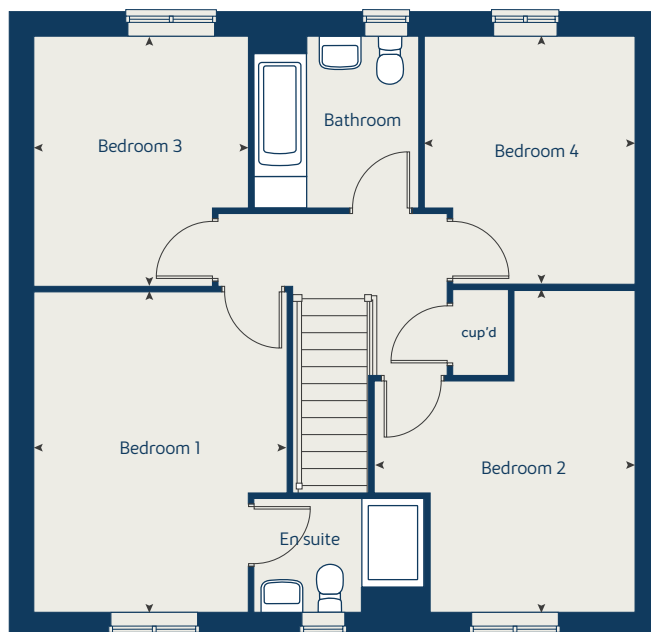
1 Alternative layouts apply to selected plots only. Please see sales consultant for further details.

Produced by the Vistry Group Design Studio.

When you have finished with this leaflet please recycle it.

Crowborough DSI4016 / 05.25

### First floor



### Ground floor





# The Orchid

4 bedroom home

[bovishomes.co.uk](http://bovishomes.co.uk)

**Bovis  
Homes** 

# The Orchid

4 bedroom home

Ground floor	metres	feet / inches
Kitchen/dining/family area	6.04 x 3.76	19' 10" x 12' 4"
Living room	4.83 x 3.39	15' 10" x 11' 2"

First floor		
Bedroom 1	3.93 x 2.95	12' 11" x 9' 8"
Bedroom 2	3.20 x 2.56	10' 6" x 8' 2"
Bedroom 3	3.43 x 2.18	11' 3" x 7' 2"
Bedroom 4	3.00 x 2.08	9' 10" x 6' 10"

h	hob	ws	washing machine space
ovn	oven	cup'd	cupboard
ffzs	fridge freezer space	◀ ▶	measuring points
ds	dishwasher space		

**The Orchid | Crowborough |**

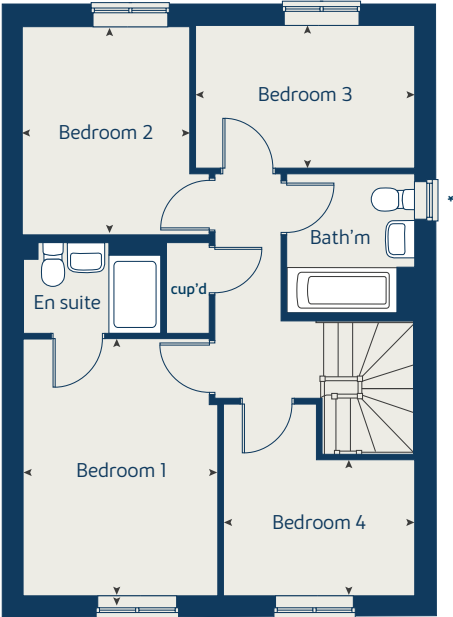
The floorplan has been produced for illustrative purposes only. Room sizes shown are between arrow points as indicated on plan. The dimensions have tolerances of + or -50mm and should not be used other than for general guidance. If specific dimensions are required, enquiries should be made to the sales consultant. The floor plans shown are not to scale. Measurements are based on the original drawings. Slight variations may occur during construction.

The illustrations shown are computer generated impressions of how the property may look and are indicative only. External details or finishes may vary on individual plots and homes may be built in either detached or attached styles depending on the development layout. Exact specifications, window styles and whether a property is left or right-handed may differ from plot to plot. Please speak to our sales consultant for specific plot details.

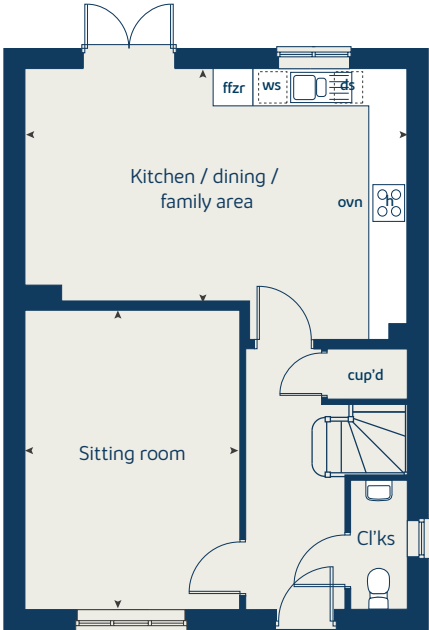
Produced by the Vistry Group Design Studio.  
 When you have finished with this leaflet please recycle it.  
 Crowborough DSI4016 / 05.25



## First floor



## Ground floor







# The Aspen

4 bedroom home

[bovishomes.co.uk](http://bovishomes.co.uk)

**Bovis  
Homes** 

# The Aspen

## 4 bedroom home

Ground floor	metres	feet / inches
Kitchen / dining area	7.77 x 3.37	25' 4" x 11' 0"
Sitting room	5.04 x 3.39	16' 5" x 11' 1"
Study	2.03 x 2.03	6' 8" x 6' 8"

### First floor

Bedroom 1	4.52 x 3.82	14' 8" x 12' 5"
Bedroom 2	3.87 x 3.11	12' 7" x 10' 2"
Bedroom 3	4.07 x 2.42	13' 3" x 7' 9"
Bedroom 4	3.61 x 2.45	11' 8" x 8' 0"

ovn	oven	ffzr	fridge freezer
h	hob	ldr	larder
ds	dishwasher space	cup'd	cupboard
ws	washing machine space	◀ ▶	measuring points

### The Aspen | X414 (IF) 01 Crowborough |

The floorplan has been produced for illustrative purposes only. Room sizes shown are between arrow points as indicated on plan. The dimensions have tolerances of + or -50mm and should not be used other than for general guidance. If specific dimensions are required, enquiries should be made to the sales consultant. The floor plans shown are not to scale. Measurements are based on the original drawings. Slight variations may occur during construction.

The illustrations shown are computer generated impressions of how the property may look and are indicative only. External details or finishes may vary on individual plots and homes may be built in either detached or attached styles depending on the development layout. Exact specifications, window styles and whether a property is left or right-handed may differ from plot to plot. Please speak to our sales consultant for specific plot details.

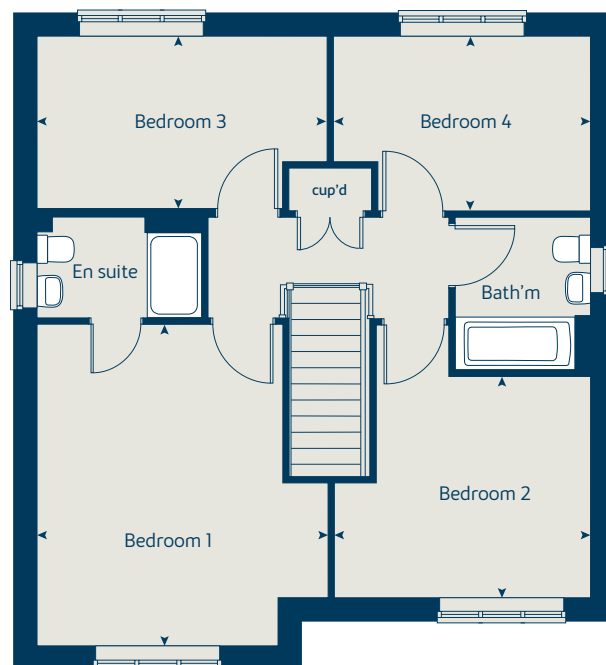
- ① Bay window applies to plots 1 and 147 only. Please see sales consultant for further details.
- ② Bay window applies to plot 63 only. Please see sales consultant for further details.

Produced by the Vistry Group Design Studio.

When you have finished with this leaflet please recycle it.

DSO4976 / 08.24

### First floor



### Ground floor







# The Chestnut

4 bedroom home

[bovishomes.co.uk](http://bovishomes.co.uk)

**Bovis  
Homes** 



# The Chestnut

## 4 bedroom home

Ground floor	metres	feet / inches
Kitchen	3.91 x 3.04	12' 10" x 9' 11"
Dining / family area	4.37 x 2.96	14' 4" x 9' 9"
Sitting room	4.97 x 3.40	16' 4" x 11' 1"
Study	3.40 x 1.81	11' 1" x 5' 11"

### First floor

Bedroom 1	4.48 x 3.24	14' 9" x 10' 8"
Bedroom 2	3.43 x 3.36	11' 3" x 11' 0"
Bedroom 3	3.43 x 2.32	11' 3" x 7' 8"
Bedroom 4	3.21 x 2.36	10' 7" x 7' 9"

ovn	oven	ldr	larder
h	hob	ffzr	fridge freezer
ds	dishwasher space	cup'd	cupboard
ws	washing machine space	◀ ▶	measuring points

### The Chestnut | X413 01 Crowborough |

The floorplan has been produced for illustrative purposes only. Room sizes shown are between arrow points as indicated on plan. The dimensions have tolerances of + or -50mm and should not be used other than for general guidance. If specific dimensions are required, enquiries should be made to the sales consultant. The floor plans shown are not to scale. Measurements are based on the original drawings. Slight variations may occur during construction.

The illustrations shown are computer generated impressions of how the property may look and are indicative only. External details or finishes may vary on individual plots and homes may be built in either detached or attached styles depending on the development layout. Exact specifications, window styles and whether a property is left or right-handed may differ from plot to plot. Please speak to our sales consultant for specific plot details.

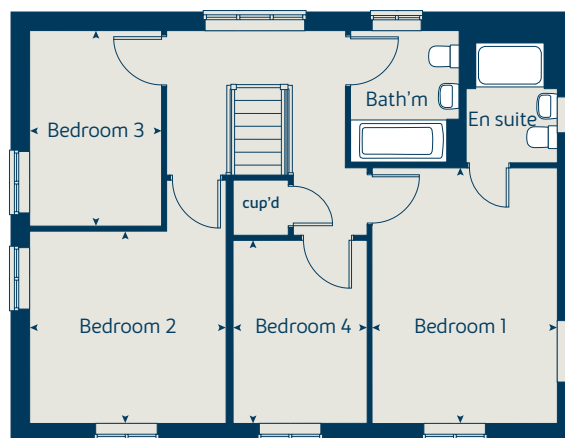
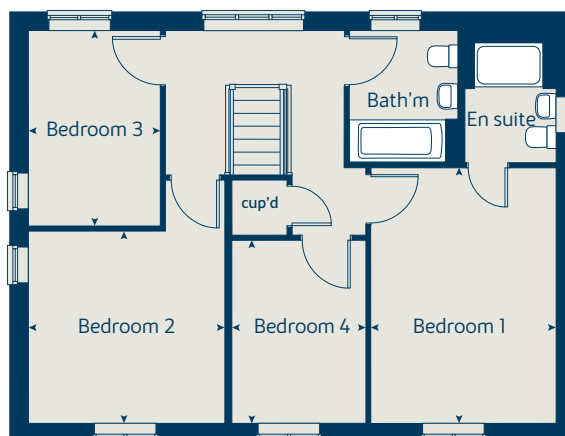
① Alternative layout applies to selected plots only. Please see sales consultant for further details.

Produced by the Vistry Group Design Studio.

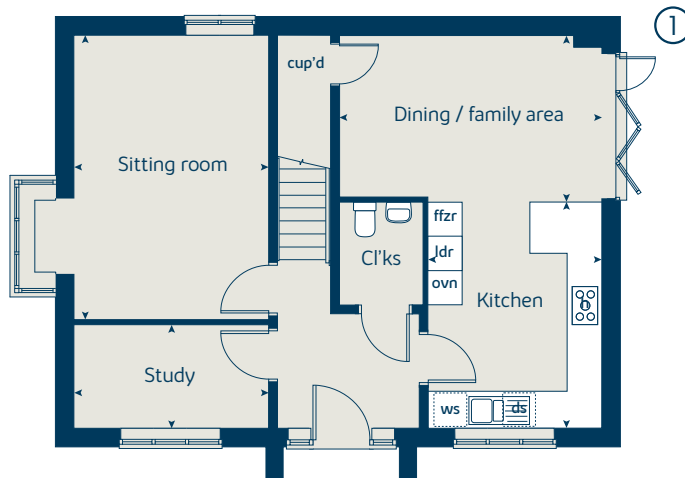
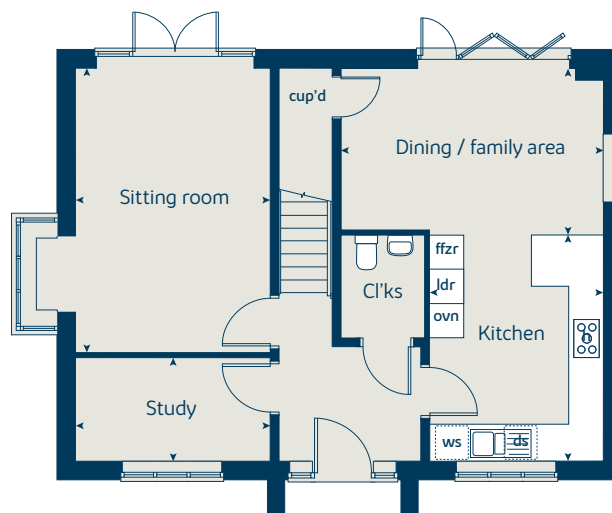
When you have finished with this leaflet please recycle it.

DS04976 / 08.24

### First floor



### Ground floor





# The Juniper

4 bedroom home

[bovishomes.co.uk](http://bovishomes.co.uk)

**Bovis  
Homes** 

# The Juniper

## 4 bedroom home

Ground floor	metres	feet / inches
Kitchen / dining / family area	7.21 x 3.51	23' 7" x 11' 6"
Sitting room	4.55 x 3.04	14' 7" x 10' 0"
Study	2.34 x 1.85	7' 8" x 6' 0"

### First floor

Bedroom 1	3.05 x 2.86	10' 0" x 9' 5"
Bedroom 2	2.98 x 2.85	9' 9" x 9' 4"
Bedroom 3	3.60 x 2.39	11' 10" x 7' 10"
Bedroom 4	3.53 x 2.39	11' 7" x 7' 10"

ovn	oven	ldr	larder
h	hob	ffzr	fridge freezer
ds	dishwasher space	cup'd	cupboard
ws	washing machine space	◀ ▶	measuring points

### The Juniper | X412 01 Crowborough |

The floorplan has been produced for illustrative purposes only. Room sizes shown are between arrow points as indicated on plan. The dimensions have tolerances of + or -50mm and should not be used other than for general guidance. If specific dimensions are required, enquiries should be made to the sales consultant. The floor plans shown are not to scale. Measurements are based on the original drawings. Slight variations may occur during construction.

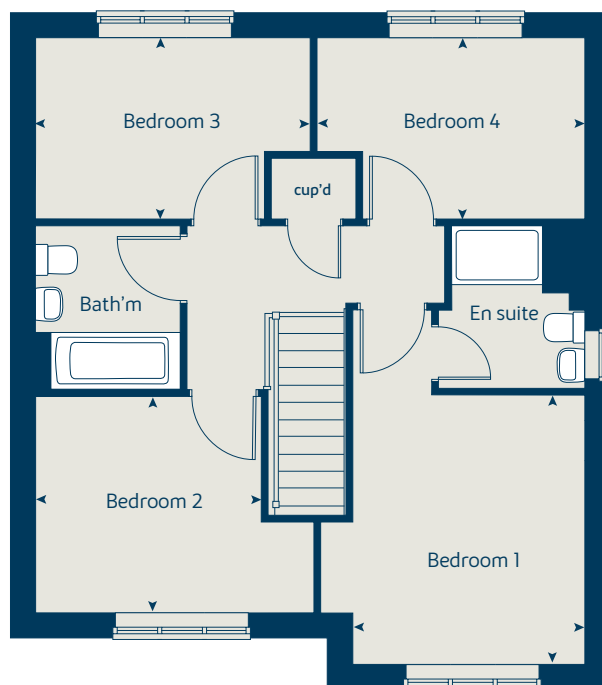
The illustrations shown are computer generated impressions of how the property may look and are indicative only. External details or finishes may vary on individual plots and homes may be built in either detached or attached styles depending on the development layout. Exact specifications, window styles and whether a property is left or right-handed may differ from plot to plot. Please speak to our sales consultant for specific plot details.

Produced by the Vistry Group Design Studio.

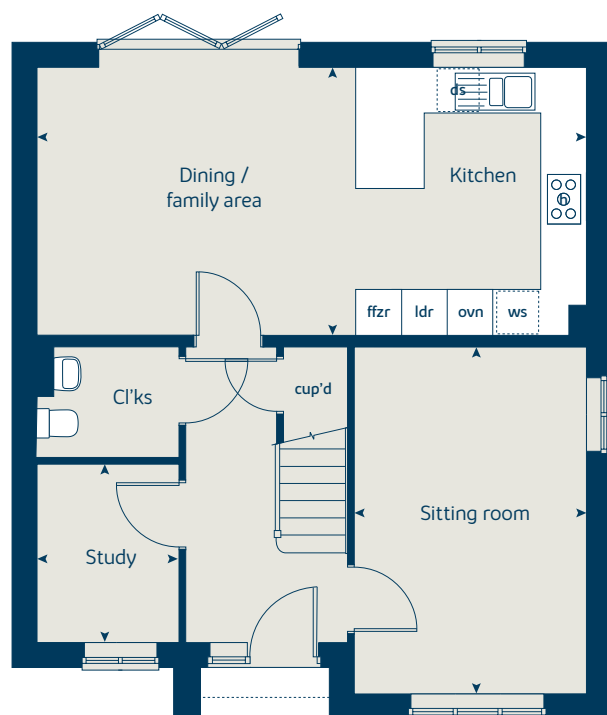
When you have finished with this leaflet please recycle it.

DS04976 / 08.24

### First floor



### Ground floor







# The Mulberry

4 bedroom home

[bovishomes.co.uk](http://bovishomes.co.uk)

**Bovis  
Homes** 

# The Mulberry

## 4 bedroom home

Ground floor	metres	feet / inches
Kitchen / dining area	8.16 x 2.92	26' 10" x 9' 7"
Sitting room	4.68 x 3.72	15' 5" x 12' 3"
Study	3.43 x 2.34	11' 3" x 7' 8"

### First floor

Bedroom 1	3.73 x 3.49	12' 3" x 11' 0"
Bedroom 2	3.66 x 3.44	12' 1" x 11' 4"
Bedroom 3	4.32 x 2.94	14' 2" x 9' 8"
Bedroom 4	3.75 x 2.58	12' 4" x 8' 5"

ovn	oven	ffzs	fridge freezer space
h	hob	cup'd	cupboard
ds	dishwasher space	◀ ▶	measuring points
ws	washing machine space		

### The Mulberry | X418 (IF) Crowborough |

The floorplan has been produced for illustrative purposes only. Room sizes shown are between arrow points as indicated on plan. The dimensions have tolerances of + or -50mm and should not be used other than for general guidance. If specific dimensions are required, enquiries should be made to the sales consultant. The floor plans shown are not to scale. Measurements are based on the original drawings. Slight variations may occur during construction.

The illustrations shown are computer generated impressions of how the property may look and are indicative only. External details or finishes may vary on individual plots and homes may be built in either detached or attached styles depending on the development layout. Exact specifications, window styles and whether a property is left or right-handed may differ from plot to plot. Please speak to our sales consultant for specific plot details.

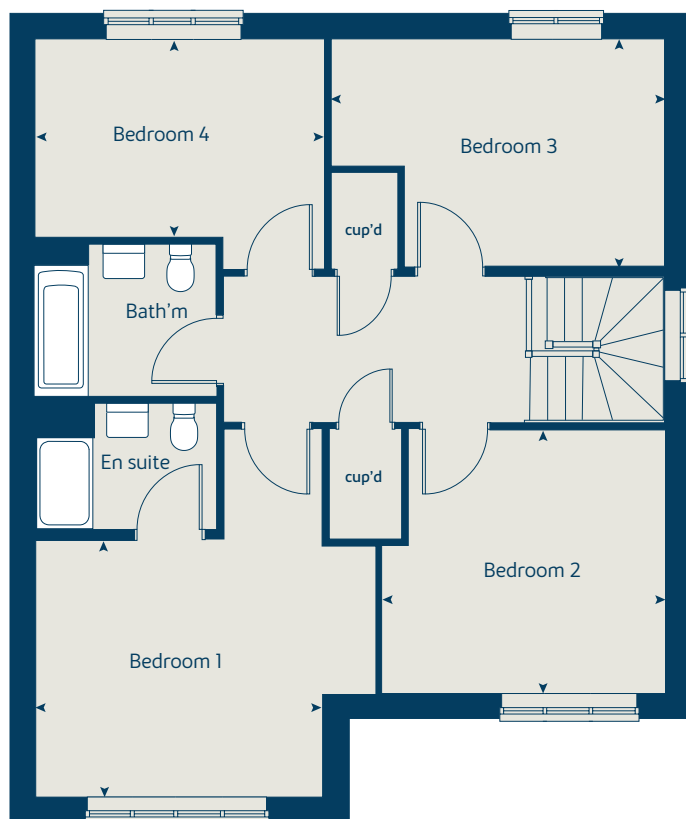
\* Bay windows apply to plot 145 only. Please see sales consultant for further details.

Produced by the Vistry Group Design Studio.

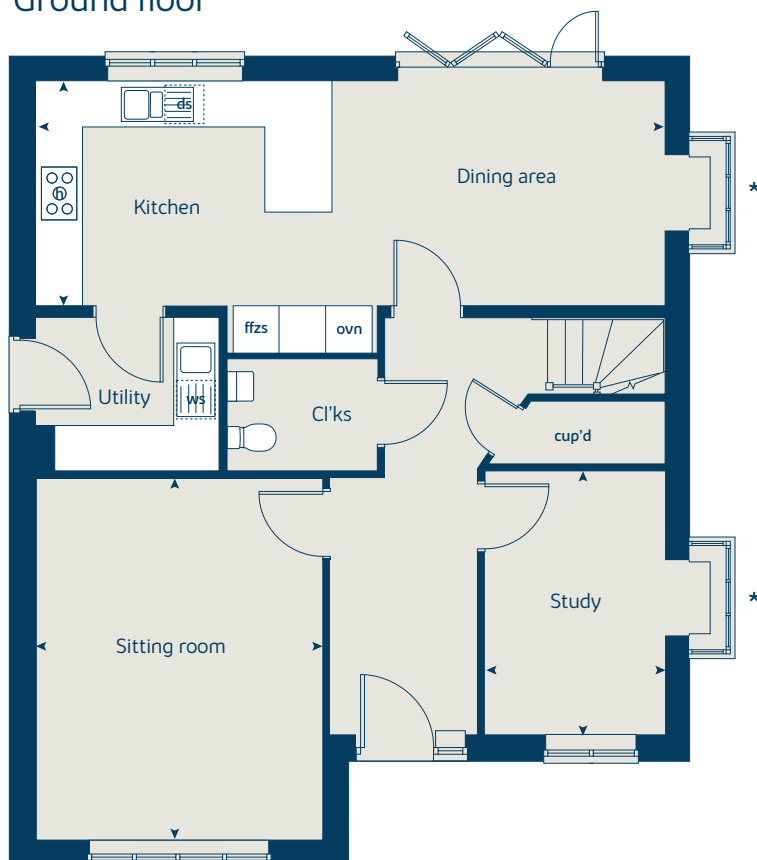
When you have finished with this leaflet please recycle it.

DS04976 / 08.24

### First floor



### Ground floor







# The Birch

5 bedroom home

[bovishomes.co.uk](https://bovishomes.co.uk)

**Bovis  
Homes** 



# The Birch

## 5 bedroom home

Ground floor	metres	feet / inches
Kitchen	4.54 x 3.33	14' 8" x 10' 9"
Family / dining area	5.79 x 3.52	18' 9" x 11' 6"
Sitting room	4.30 x 3.61	14' 1" x 11' 10"
Study / dining room	3.41 x 3.00	11' 2" x 9' 10"

### First floor

Bedroom 1	3.62 x 3.51	11' 10" x 11' 6"
Bedroom 2	3.92 x 2.90	12' 9" x 9' 6"
Bedroom 3	3.06 x 2.75	10' 0" x 9' 0"
Bedroom 4	3.31 x 2.83	10' 8" x 9' 3"
Bedroom 5	2.83 x 2.69	9' 2" x 8' 8"

ovn	oven	ldr	larder
h	hob	cyl	hot water cylinder
dw	dishwasher	w	wardrobe
ws	washing machine space	cup'd	cupboard
ffzr	fridge freezer	◀ ▶	measuring points

### The Birch | X518 (IF) 01 Crowborough |

The floorplan has been produced for illustrative purposes only. Room sizes shown are between arrow points as indicated on plan. The dimensions have tolerances of + or -50mm and should not be used other than for general guidance. If specific dimensions are required, enquiries should be made to the sales consultant. The floor plans shown are not to scale. Measurements are based on the original drawings. Slight variations may occur during construction.

The illustrations shown are computer generated impressions of how the property may look and are indicative only. External details or finishes may vary on individual plots and homes may be built in either detached or attached styles depending on the development layout. Exact specifications, window styles and whether a property is left or right-handed may differ from plot to plot. Please speak to our sales consultant for specific plot details.

① Bay windows apply to plots 46 and 146 only. Please see sales consultant for further details.

② Bathroom layout differs to plots 46 and 146 only. Please see sales consultant for further details.

\* Utility door omitted to plot 81 only. Please see sales consultant for further details.

\*\* Window omitted to plot 41 only. Please see sales consultant for further details.

Produced by the Vistry Group Design Studio.

When you have finished with this leaflet please recycle it.

DS04976 / 08.24



### First floor



### Ground floor

