

SHERFORD

Plymouth





Welcome to
SHERFORD

Discover our stunning collection of 2, 3, 4 and 5-bedroom new homes at Sherford, thoughtfully designed for modern living. Nestled on the edge of Plymouth, Sherford is a vibrant new community surrounded by beautiful Devon countryside, while offering easy access to the city and the coast. This exceptional location combines the charm of rural living with the convenience of modern amenities.

Each home has been crafted with care, featuring spacious open-plan layouts, bi-fold doors, and dedicated studies to create light-filled, flexible spaces for work, rest, and play. If you're looking for a wonderful new home in a thriving community close to rolling green hills and stunning beaches, your search ends here.





THE PERFECT LOCATION

Sherford is a vibrant new town on the edge of Plymouth, offering the ideal balance of countryside charm and modern convenience. Just 4 miles from the historic port city, you'll have everything you need close at hand, while enjoying the beauty of the South Hams and nearby Dartmoor National Park.

Plymouth is alive with history and culture. Explore the famous Hoe with its stunning waterfront views, or visit Smeaton's Tower, the National Marine Aquarium, and the Merchant's House Museum for a glimpse into the city's rich heritage.

Food lovers will enjoy Plymouth's thriving dining scene, with an array of restaurants, cafés, pubs, and bars scattered throughout the city and along the waterfront. For shopping, head to Drake Circus or Armada Shopping Centre for high-street favourites, or browse independent boutiques for something unique.

Entertainment is never far away—catch a live performance at the Theatre Royal or Plymouth Pavilion, or enjoy year-round music and arts events across the city.

Prefer the great outdoors? The South Hams countryside and stunning Devon coastline are just moments away, perfect for walking, cycling, and family days out. And if you're looking for a seaside escape, Paignton and Torquay on the English Riviera are less than 30 miles away, offering sandy beaches, attractions, and fine dining.

Living at Sherford means excellent schools, local amenities, and effortless connections. The A38/Devon Expressway is just minutes away, linking you to Exeter and the M5, while Plymouth station provides direct rail services to London and the South West. Exeter Airport is also within easy reach for UK and European travel.

If you're looking for a well-connected location with a strong sense of community, surrounded by countryside yet close to city life, Sherford is the perfect place to call home. Explore our beautifully designed homes and start your next chapter today.

Set in the heart of Devon, Sherford offers a stunning collection of 2 to 5-bedroom homes in a thriving new community. It's easy to see why couples and families of all ages are drawn to this exceptional location.

- **SHERFORD**
- **SHERFORD COUNTRY PARK**
0.3 miles - 6 minute walk
- **SHERFORD VALE PRIMARY SCHOOL**
0.9 miles - 19 minute walk
- **SHERFORD SPORTS PITCHES**
1.1 miles - 24 minute walk
- **MORRISONS SUPERMARKET**
3.9 miles - 13 minute drive
- **NATIONAL MARINE AQUARIUM**
8.1 miles - 21 minute drive
- **DRAKES CIRCUS SHOPPING CENTRE**
8.1 miles - 21 minute drive
- **BARBICAN**
8.5 miles - 23 minute drive
- **PLYMOUTH RAILWAY STATION**
8.5 miles - 24 minute drive
- **DERRIFORD HOSPITAL**
9.1 miles - 21 minute drive



THE HOLLY
2 bedroom home



THE BUCKTHORN
2 bedroom home



THE CEDAR
2 bedroom home



THE LARCH
2 bedroom home



THE HAZEL
2 bedroom home



THE ROWAN
3 bedroom home



THE SPRUCE
3 bedroom home



THE OAK
3 bedroom home



THE CYPRESS
3 bedroom home



THE BEECH
3 bedroom home



THE WILLOW
4 bedroom home



THE JUNIPER
4 bedroom home



THE CHESTNUT
4 bedroom home



THE ASPEN
4 bedroom home



THE MAPLE
4 bedroom home



THE BRIAR
4 bedroom home



THE BIRCH
5 bedroom home

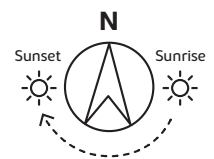


THE YEW
5 bedroom home



THE PINE
5 bedroom home





DEVELOPMENT LAYOUT

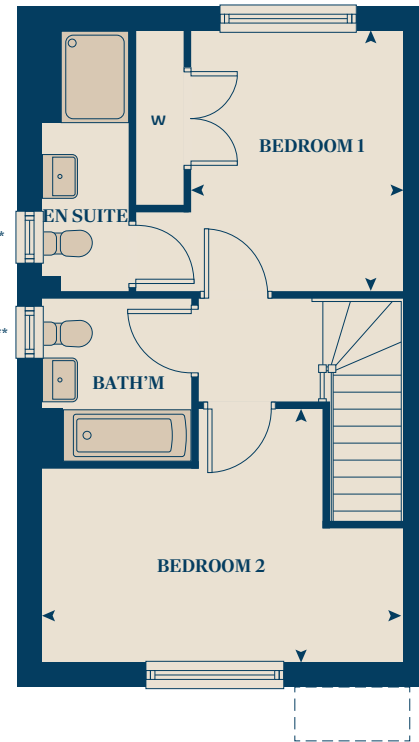
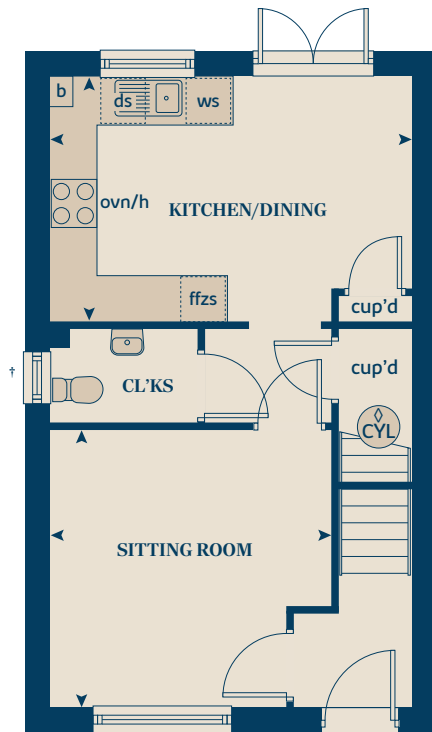
Sherford boast a stunning range of 2, 3, 4 & 5 bedroom homes each with unique views and aspects. Discover your dream home today.

PRE Pre-sold homes

The site plan shown on this page has been produced for home identification purposes only and is not to scale. The development layout, landscaping and tenure of all dwellings may be subject to change throughout the course of the development. Homes shown as "pre sold" and other properties sold on the general market may not be sold to individual owner occupiers and may instead be transferred to other purchasers, including private investors or affordable housing providers. As partner arrangements are agreed, the mix of tenures across a development can change significantly and rapidly. Finishes and materials may vary from those shown. Please check the details of your chosen plot and house type with the sales consultant. Development layout plan correct at time of production.

THE HOLLY

2 bedroom home



- † Window to plots 960 & 965
- * Window to plots 922, 923, 960 & 965
- ** Window to plots 922, 923, 960, 965, 1060, 1061, 1062, 1063, 1064, 1065
- ◇ Hot water cylinder to plots 860, 861, 862 & 863

GROUND FLOOR	METRES	FEET/INCHES
Kitchen/dining area	4.74 x 3.26	15'6" x 10'8"
Sitting room	3.71 x 3.66	12'2" x 12'0"

FIRST FLOOR	METRES	FEET/INCHES
Bedroom 1	3.51 x 3.46	11'6" x 11'4"
Bedroom 2	4.74 x 3.35	15'6" x 10'11"

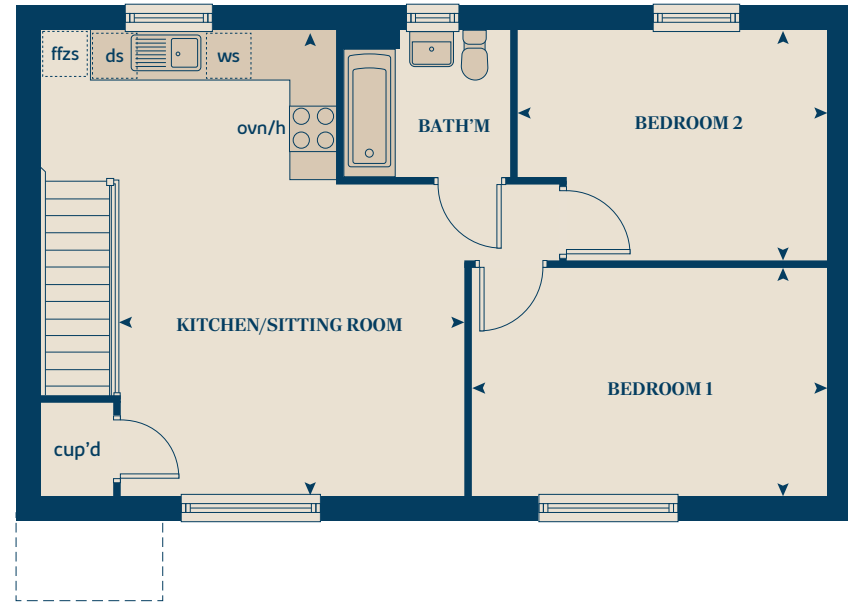
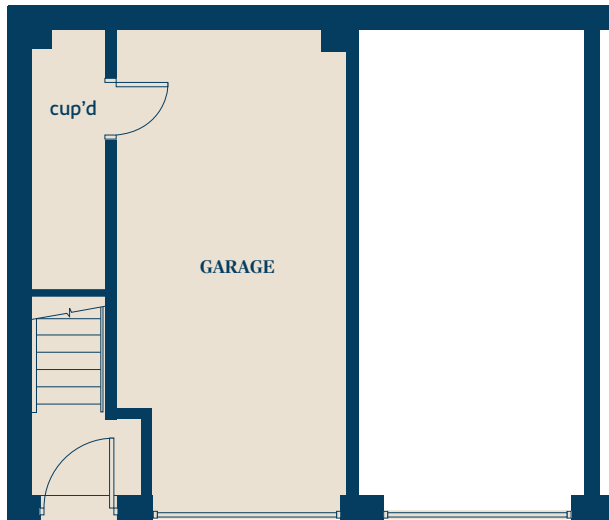
< >	measuring points	ds	optional dishwasher space
ws	washing machine space	cup'd	cupboard
h	hob	b	boiler
ovn	oven	w	wardrobe
ffzs	fridge freezer space	CYL	hot water cylinder

The floorplan has been produced for illustrative purposes only. Room sizes shown are between arrow points as indicated on plan. The dimensions have tolerances of + or -50mm and should not be used other than for general guidance. If specific dimensions are required, enquiries should be made to the sales consultant. The floor plans shown are not to scale. Measurements are based on the original drawings. Slight variations may occur during construction. The illustrations shown are computer generated impressions of how the property may look and are indicative only. External details or finishes may vary on individual plots and homes may be built in either detached or attached styles depending on the development layout. Exact specifications, window styles and whether a property is left or right-handed may differ from plot to plot. Please speak to our sales consultant for specific plot details.



THE BUCKTHORN

2 bedroom home



FIRST FLOOR

Kitchen/sitting room

METRES
6.15 x 4.57

FEET/INCHES
20'2" x 14'11"

Bedroom 1

4.68 x 3.02

15'4" x 9'11"

Bedroom 2

4.08 x 3.04

13'5" x 10'0"

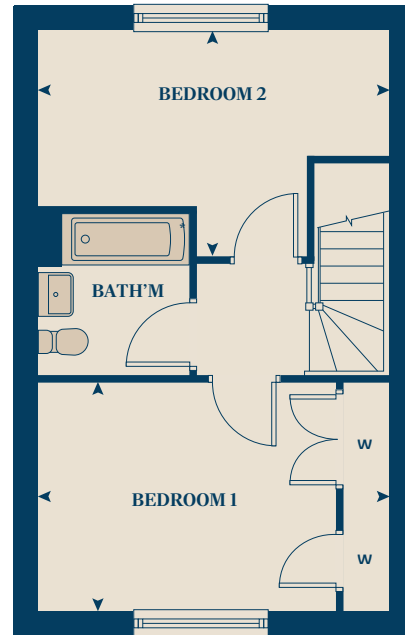
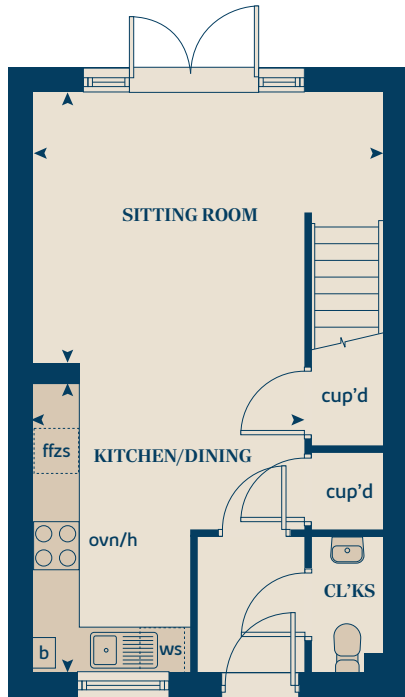
< >	measuring points	ffzs	fridge freezer space
ws	washing machine space	ds	optional dishwasher space
h	hob	cup'd	cupboard
ovn	oven		

The floorplan has been produced for illustrative purposes only. Room sizes shown are between arrow points as indicated on plan. The dimensions have tolerances of + or -50mm and should not be used other than for general guidance. If specific dimensions are required, enquiries should be made to the sales consultant. The floor plans shown are not to scale. Measurements are based on the original drawings. Slight variations may occur during construction. The illustrations shown are computer generated impressions of how the property may look and are indicative only. External details or finishes may vary on individual plots and homes may be built in either detached or attached styles depending on the development layout. Exact specifications, window styles and whether a property is left or right-handed may differ from plot to plot. Please speak to our sales consultant for specific plot details.



THE CEDAR

2 bedroom home



GROUND FLOOR

METRES FEET/INCHES

Kitchen/dining area 3.83 x 3.59 12'6" x 11'9"
Sitting room 4.62 x 3.59 15'2" x 11'9"

FIRST FLOOR

METRES FEET/INCHES

Bedroom 1 4.62 x 3.03 9'11" x 15'2"
Bedroom 2 4.62 x 2.99 15'2" x 9'8"

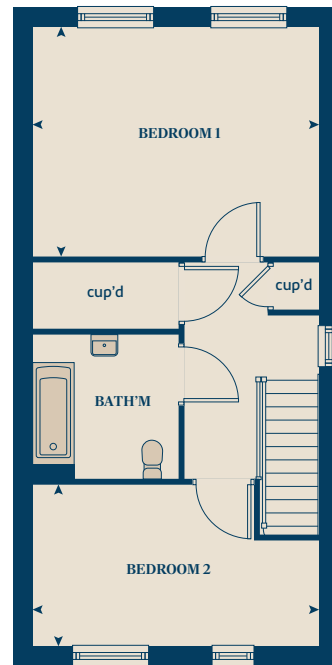
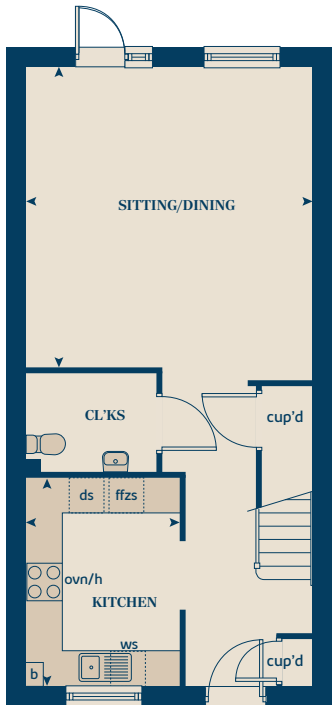
< >	measuring points	ffzs	fridge freezer space
ws	washing machine space	cup'd	cupboard
h	hob	b	boiler
ovn	oven	w	wardrobe

The floorplan has been produced for illustrative purposes only. Room sizes shown are between arrow points as indicated on plan. The dimensions have tolerances of + or -50mm and should not be used other than for general guidance. If specific dimensions are required, enquiries should be made to the sales consultant. The floor plans shown are not to scale. Measurements are based on the original drawings. Slight variations may occur during construction. The illustrations shown are computer generated impressions of how the property may look and are indicative only. External details or finishes may vary on individual plots and homes may be built in either detached or attached styles depending on the development layout. Exact specifications, window styles and whether a property is left or right-handed may differ from plot to plot. Please speak to our sales consultant for specific plot details.



THE LARCH

2 bedroom home



GROUND FLOOR

	METRES	FEET/INCHES
Sitting/dining area	5.09 x 4.84	16'9" x 15'11"
Kitchen	3.53 x 2.61	11'7" x 8'7"

FIRST FLOOR

	METRES	FEET/INCHES
Bedroom 1	4.84 x 3.90	15'11" x 12'10"
Bedroom 2	4.84 x 2.73	15'11" x 8'11"

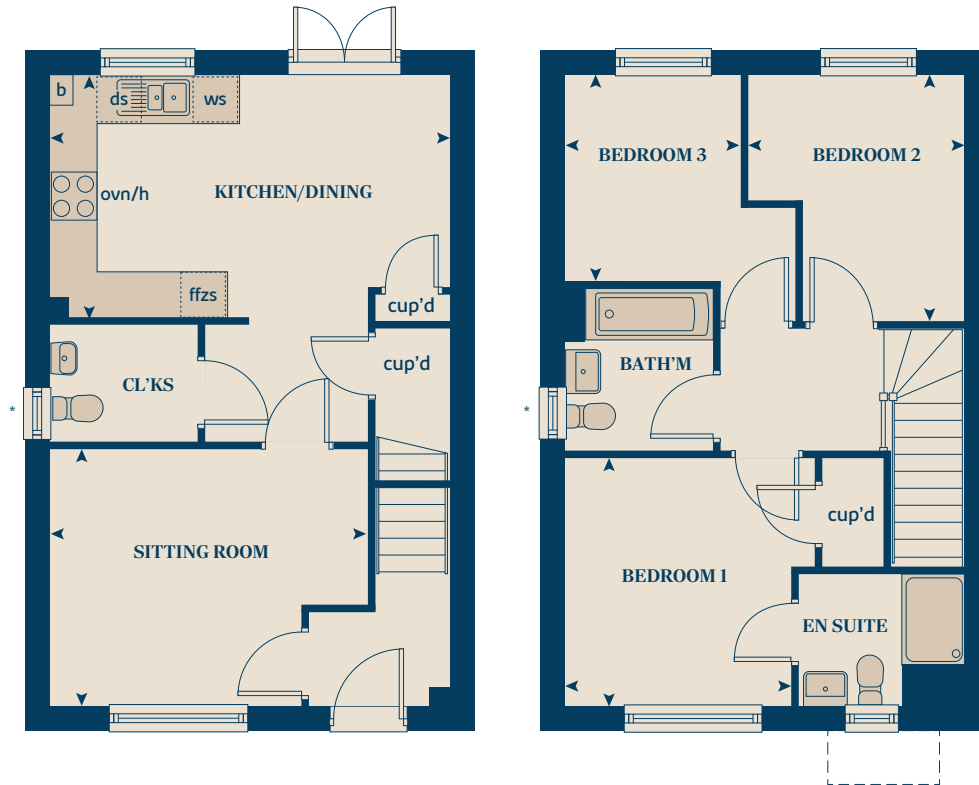
< >	measuring points	ds	optional dishwasher space
ws	washing machine space	cup'd	cupboard
h	hob	b	boiler
ovn	oven		
ffzs	fridge freezer space		

The floorplan has been produced for illustrative purposes only. Room sizes shown are between arrow points as indicated on plan. The dimensions have tolerances of + or -50mm and should not be used other than for general guidance. If specific dimensions are required, enquiries should be made to the sales consultant. The floor plans shown are not to scale. Measurements are based on the original drawings. Slight variations may occur during construction. The illustrations shown are computer generated impressions of how the property may look and are indicative only. External details or finishes may vary on individual plots and homes may be built in either detached or attached styles depending on the development layout. Exact specifications, window styles and whether a property is left or right-handed may differ from plot to plot. Please speak to our sales consultant for specific plot details.



THE HAZEL

3 bedroom home



GROUND FLOOR

	METRES	FEET/INCHES
Kitchen/dining area	5.24 x 3.21	17'2" x 10'6"
Sitting room	4.22 x 3.41	13'10" x 11'2"

FIRST FLOOR

	METRES	FEET/INCHES
Bedroom 1	3.29 x 2.98	10'9" x 9'9"
Bedroom 2	3.25 x 2.86	10'8" x 9'4"
Bedroom 3	2.74 x 2.31	9'0" x 7'7"

* Window to plots 932, 937, 939, 940, 963, 1058, 1075, 1077, 1104, 1105, 1106, 1107 & 1108

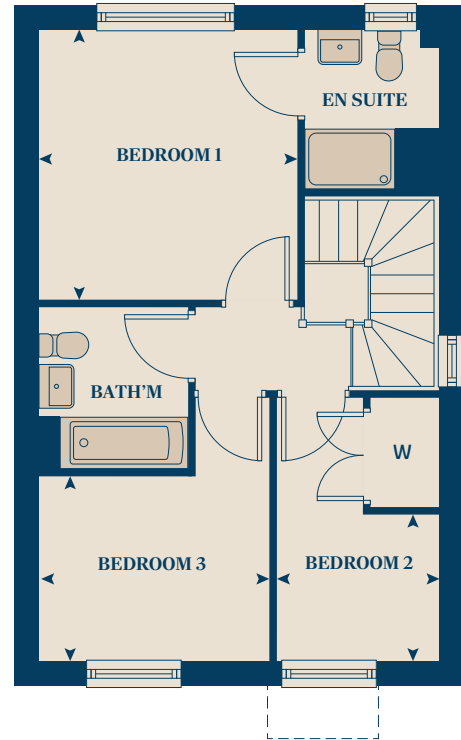
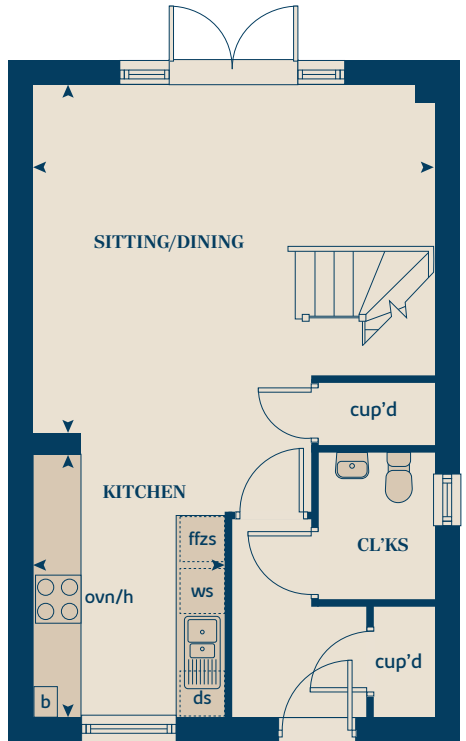
< >	measuring points	ds	optional dishwasher space
ws	washing machine space	cup'd	cupboard
h	hob	b	boiler
ovn	oven	w	wardrobe
ffzs	fridge freezer space		

The floorplan has been produced for illustrative purposes only. Room sizes shown are between arrow points as indicated on plan. The dimensions have tolerances of + or -50mm and should not be used other than for general guidance. If specific dimensions are required, enquiries should be made to the sales consultant. The floor plans shown are not to scale. Measurements are based on the original drawings. Slight variations may occur during construction. The illustrations shown are computer generated impressions of how the property may look and are indicative only. External details or finishes may vary on individual plots and homes may be built in either detached or attached styles depending on the development layout. Exact specifications, window styles and whether a property is left or right-handed may differ from plot to plot. Please speak to our sales consultant for specific plot details.



THE ROWAN

3 bedroom home



GROUND FLOOR	METRES	FEET/INCHES
Sitting/dining area	5.26 x 4.61	17'3" x 15'1"
Kitchen	3.47 x 2.51	11'4" x 8'2"

FIRST FLOOR	METRES	FEET/INCHES
Bedroom 1	3.58 x 3.41	11'9" x 11'2"
Bedroom 2	2.15 x 1.94	7'1" x 6'4"
Bedroom 3	3.02 x 2.44	9'11" x 8'0"

* Windows to plots 924 & 925

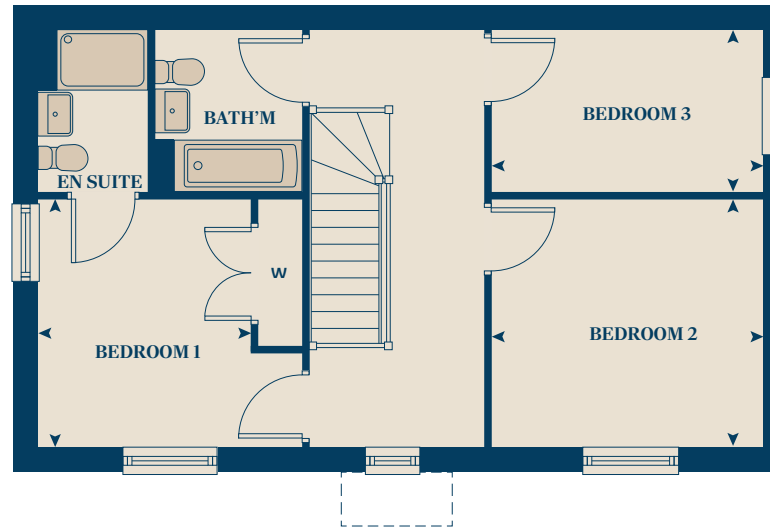
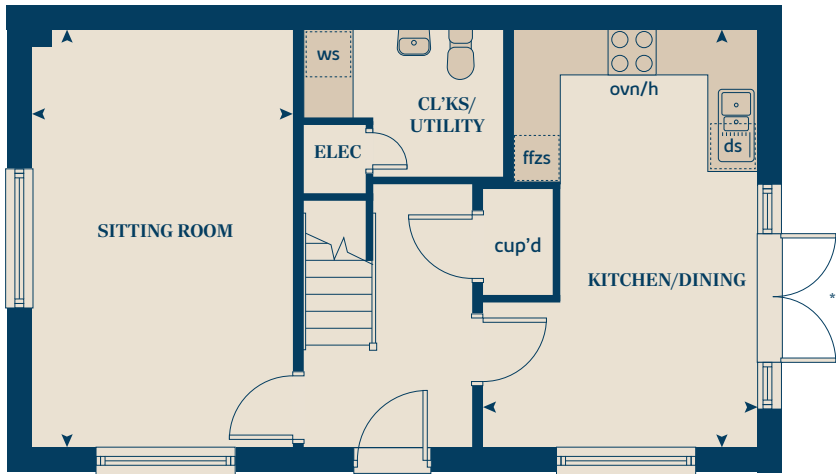
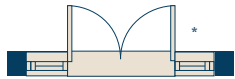
<	>	measuring points	ds	optional dishwasher space
ws		washing machine space	cup'd	cupboard
h		hob	b	boiler
ovn		oven	w	wardrobe
ffzs		fridge freezer space		

The floorplan has been produced for illustrative purposes only. Room sizes shown are between arrow points as indicated on plan. The dimensions have tolerances of + or -50mm and should not be used other than for general guidance. If specific dimensions are required, enquiries should be made to the sales consultant. The floor plans shown are not to scale. Measurements are based on the original drawings. Slight variations may occur during construction. The illustrations shown are computer generated impressions of how the property may look and are indicative only. External details or finishes may vary on individual plots and homes may be built in either detached or attached styles depending on the development layout. Exact specifications, window styles and whether a property is left or right-handed may differ from plot to plot. Please speak to our sales consultant for specific plot details.



THE SPRUCE

3 bedroom home



GROUND FLOOR	METRES	FEET/INCHES
Kitchen/dining area	5.53 x 3.63	18'2" x 11'11"
Sitting room	5.53 x 3.44	18'2" x 11'3"

FIRST FLOOR	METRES	FEET/INCHES
Bedroom 1	3.29 x 2.81	10'9" x 9'2"
Bedroom 2	3.59 x 3.29	11'9" x 10'10"
Bedroom 3	3.59 x 2.15	11'9" x 7'1"

* Kitchen French doors to plots 931, 954, 955, 1092 & 1093 only

** Side kitchen window to plot 930 only

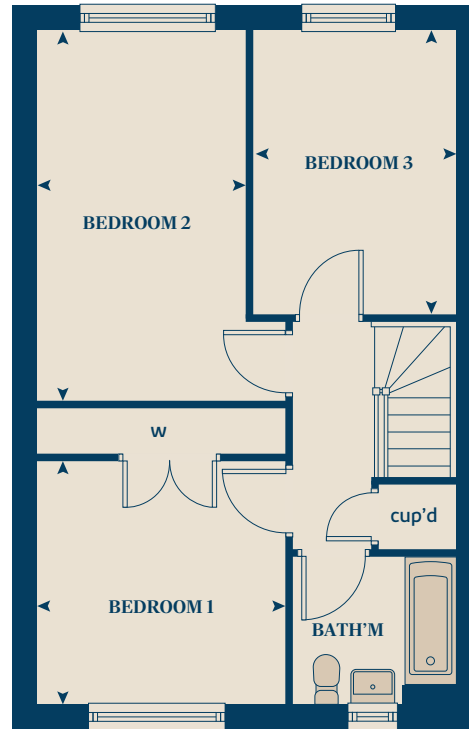
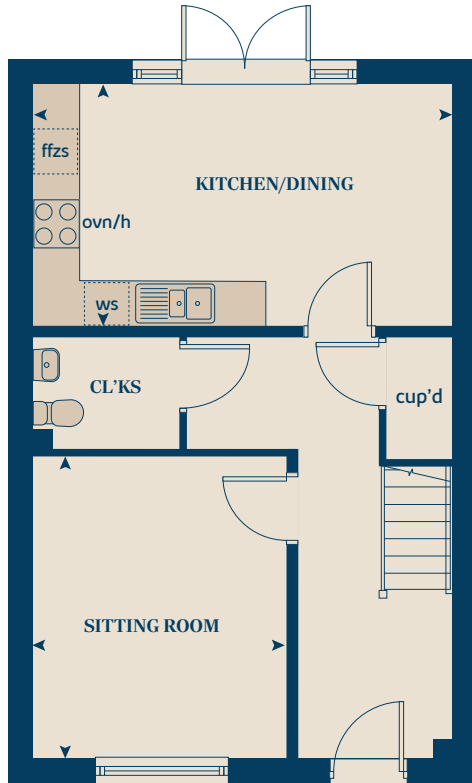
<	>	measuring points	ds	optional dishwasher space
		ws	washing machine space	
		h	cup'd	cupboard
		ovn	hob	oven
		ffzs	w	wardrobe
				fridge freezer space

The floorplan has been produced for illustrative purposes only. Room sizes shown are between arrow points as indicated on plan. The dimensions have tolerances of + or -50mm and should not be used other than for general guidance. If specific dimensions are required, enquiries should be made to the sales consultant. The floor plans shown are not to scale. Measurements are based on the original drawings. Slight variations may occur during construction. The illustrations shown are computer generated impressions of how the property may look and are indicative only. External details or finishes may vary on individual plots and homes may be built in either detached or attached styles depending on the development layout. Exact specifications, window styles and whether a property is left or right-handed may differ from plot to plot. Please speak to our sales consultant for specific plot details.



THE OAK

3 bedroom home



GROUND FLOOR	METRES	FEET/INCHES
Kitchen/dining area	5.53 x 3.19	18'2" x 10'6"
Sitting room	4.00 x 3.41	13'2" x 11'2"

FIRST FLOOR	METRES	FEET/INCHES
Bedroom 1	3.90 x 3.29	12'10" x 10'10"
Bedroom 2	4.90 x 2.76	16'1" x 9'1"
Bedroom 3	3.74 x 2.68	12'3" x 8'10"

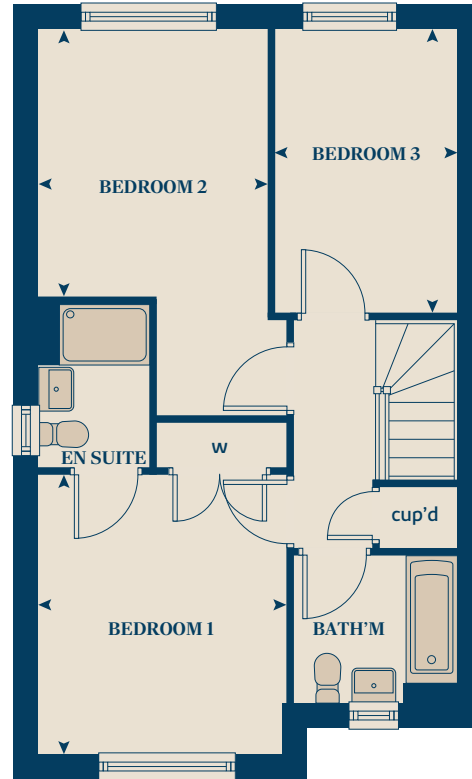
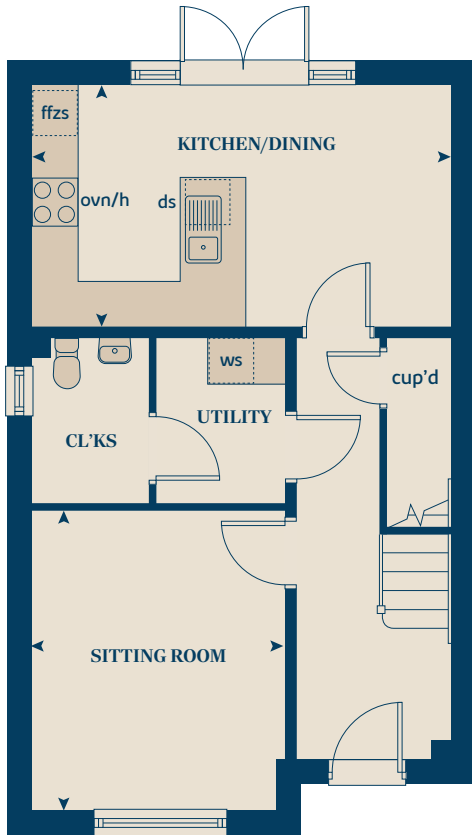
< >	measuring points	ffzs	fridge freezer space
ws	washing machine space	cup'd	cupboard
h	hob	w	wardrobe
ovn	oven		

The floorplan has been produced for illustrative purposes only. Room sizes shown are between arrow points as indicated on plan. The dimensions have tolerances of + or -50mm and should not be used other than for general guidance. If specific dimensions are required, enquiries should be made to the sales consultant. The floor plans shown are not to scale. Measurements are based on the original drawings. Slight variations may occur during construction. The illustrations shown are computer generated impressions of how the property may look and are indicative only. External details or finishes may vary on individual plots and homes may be built in either detached or attached styles depending on the development layout. Exact specifications, window styles and whether a property is left or right-handed may differ from plot to plot. Please speak to our sales consultant for specific plot details.



THE CYPRESS

3 bedroom home



GROUND FLOOR	METRES	FEET/INCHES
Kitchen/dining area	5.53 x 3.59	18'1" x 11'9"
Sitting room	3.97 x 3.34	13'0" x 11'0"

FIRST FLOOR	METRES	FEET/INCHES
Bedroom 1	3.71 x 3.22	12'2" x 10'7"
Bedroom 2	4.61 x 3.03	15'2" x 9'11"
Bedroom 3	3.74 x 2.41	12'3" x 7'11"

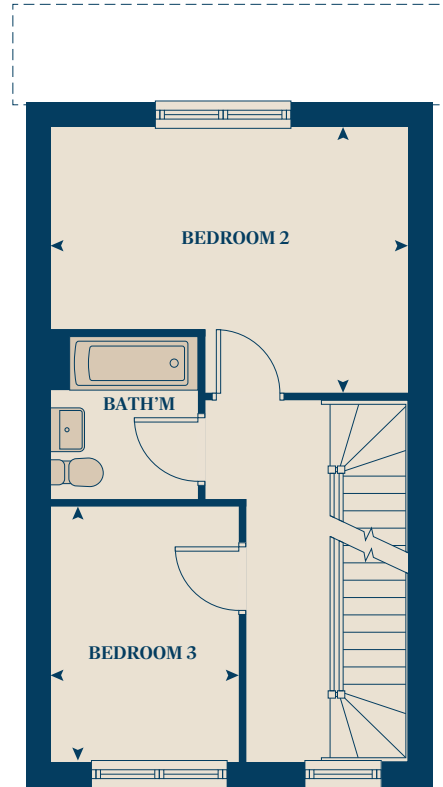
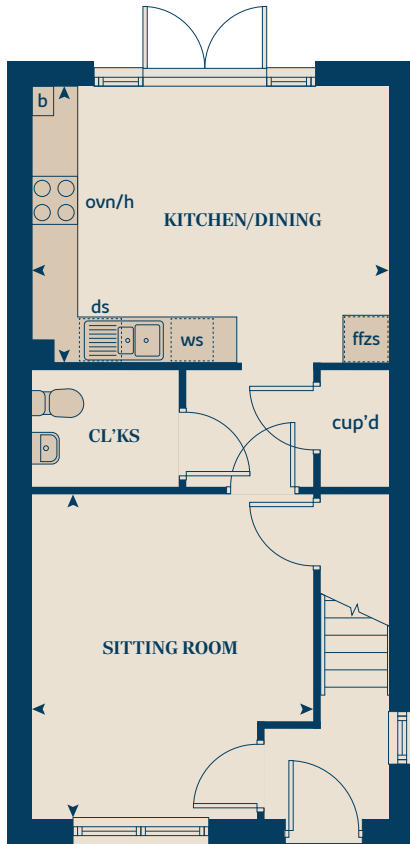
< >	measuring points	ffzs	fridge freezer space
ws	washing machine space	ds	dishwasher space
h	hob	cup'd	cupboard
ovn	oven	w	wardrobe

The floorplan has been produced for illustrative purposes only. Room sizes shown are between arrow points as indicated on plan. The dimensions have tolerances of + or -50mm and should not be used other than for general guidance. If specific dimensions are required, enquiries should be made to the sales consultant. The floor plans shown are not to scale. Measurements are based on the original drawings. Slight variations may occur during construction. The illustrations shown are computer generated impressions of how the property may look and are indicative only. External details or finishes may vary on individual plots and homes may be built in either detached or attached styles depending on the development layout. Exact specifications, window styles and whether a property is left or right-handed may differ from plot to plot. Please speak to our sales consultant for specific plot details.



THE BEECH

3 bedroom home



GROUND FLOOR

	METRES	FEET/INCHES
Kitchen/dining area	4.74 x 3.65	15'7" x 12'0"
Sitting room	4.29 x 3.72	14'1" x 12'2"

FIRST FLOOR

	METRES	FEET/INCHES
Bedroom 2	4.74 x 3.52	15'7" x 11'7"
Bedroom 3	3.38 x 2.49	11'1" x 8'2"

SECOND FLOOR

	METRES	FEET/INCHES
Bedroom 1	3.62 x 3.44	11'11" x 11'4"

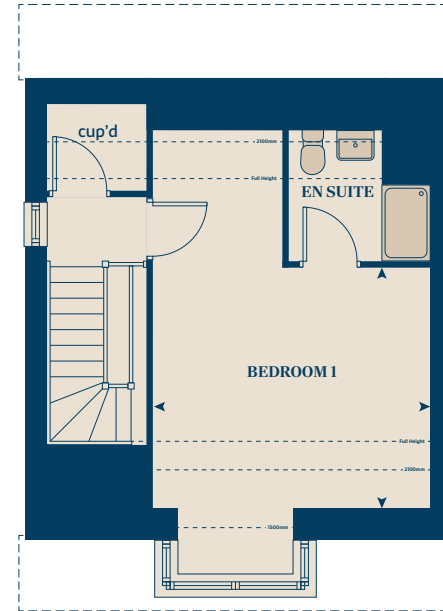
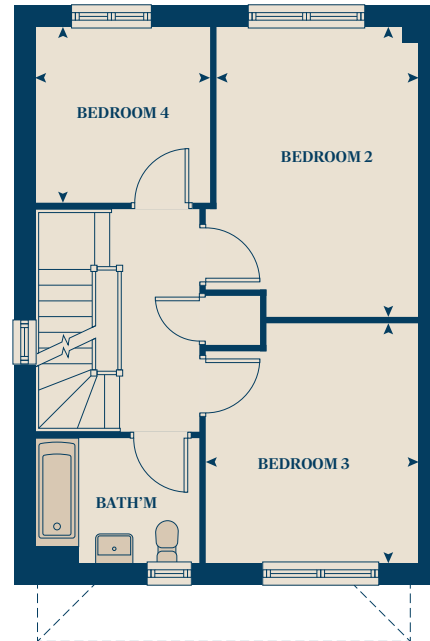
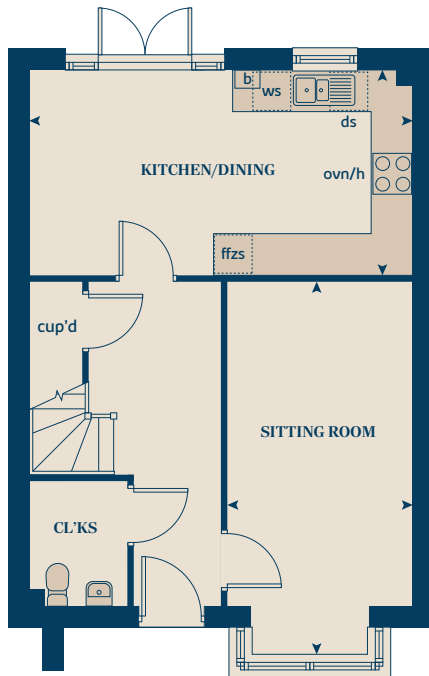
< >	measuring points	ds	optional dishwasher space
ws	washing machine space	cup'd	cupboard
h	hob	b	boiler
ovn	oven	w	wardrobe
ffzs	fridge freezer space		

The floorplan has been produced for illustrative purposes only. Room sizes shown are between arrow points as indicated on plan. The dimensions have tolerances of + or -50mm and should not be used other than for general guidance. If specific dimensions are required, enquiries should be made to the sales consultant. The floor plans shown are not to scale. Measurements are based on the original drawings. Slight variations may occur during construction. The illustrations shown are computer generated impressions of how the property may look and are indicative only. External details or finishes may vary on individual plots and homes may be built in either detached or attached styles depending on the development layout. Exact specifications, window styles and whether a property is left or right-handed may differ from plot to plot. Please speak to our sales consultant for specific plot details.



THE WILLOW

4 bedroom home



GROUND FLOOR

	METRES	FEET/INCHES
Kitchen/dining area	5.97 x 3.17	19'7" x 10'5"
Sitting room	5.65 x 2.89	18'6" x 9'6"

FIRST FLOOR

	METRES	FEET/INCHES
Bedroom 2	4.52 x 3.14	14'10" x 10'4"
Bedroom 3	3.70 x 3.33	12'2" x 10'11"
Bedroom 4	2.75 x 2.74	9'1" x 9'0"

SECOND FLOOR

	METRES	FEET/INCHES
Bedroom 1	4.3 x 3.70	14'2" x 12'2"

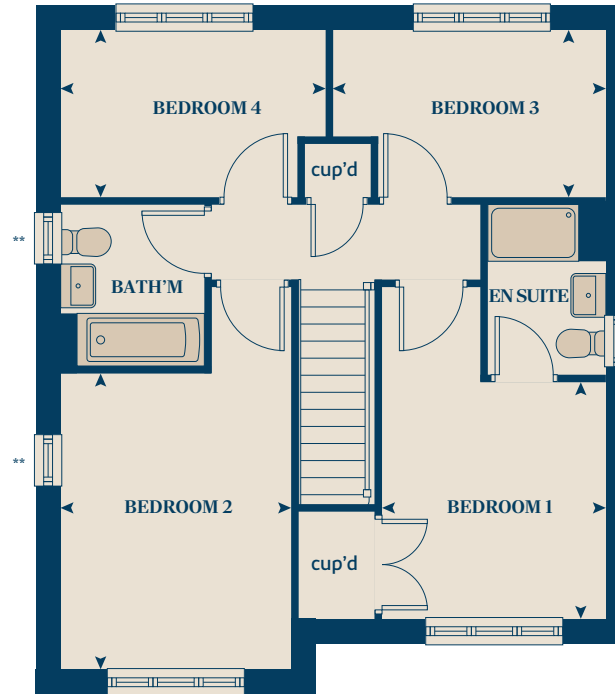
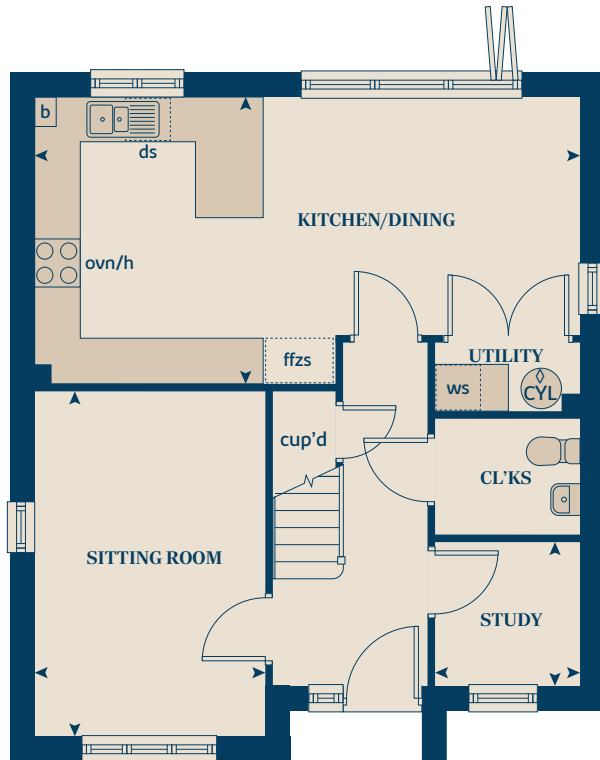
< >	measuring points	ds	optional dishwasher space
ws	washing machine space	cup'd	cupboard
h	hob	b	boiler
ovn	oven		
ffzs	fridge freezer space		

The floorplan has been produced for illustrative purposes only. Room sizes shown are between arrow points as indicated on plan. The dimensions have tolerances of + or -50mm and should not be used other than for general guidance. If specific dimensions are required, enquiries should be made to the sales consultant. The floor plans shown are not to scale. Measurements are based on the original drawings. Slight variations may occur during construction. The illustrations shown are computer generated impressions of how the property may look and are indicative only. External details or finishes may vary on individual plots and homes may be built in either detached or attached styles depending on the development layout. Exact specifications, window styles and whether a property is left or right-handed may differ from plot to plot. Please speak to our sales consultant for specific plot details.



THE JUNIPER

4 bedroom home



GROUND FLOOR

	METRES	FEET/INCHES
Kitchen/dining area	7.21 x 3.78	23'8" x 12'5"
Sitting room	4.53 x 3.05	14'10" x 10'0"
Study	1.91 x 1.88	6'3" x 6'2"

FIRST FLOOR

	METRES	FEET/INCHES
Bedroom 1	3.12 x 2.96	10'3" x 9'9"
Bedroom 2	3.92 x 3.05	12'10" x 10'0"
Bedroom 3	3.60 x 2.21	11'10" x 7'3"
Bedroom 4	3.52 x 2.21	11'7" x 7'3"

- * Window to plots 856 & 859 only
- ** Window to plots 856, 901, 929, 947, 1118 only
- ◇ Hot water cylinder to plot 859

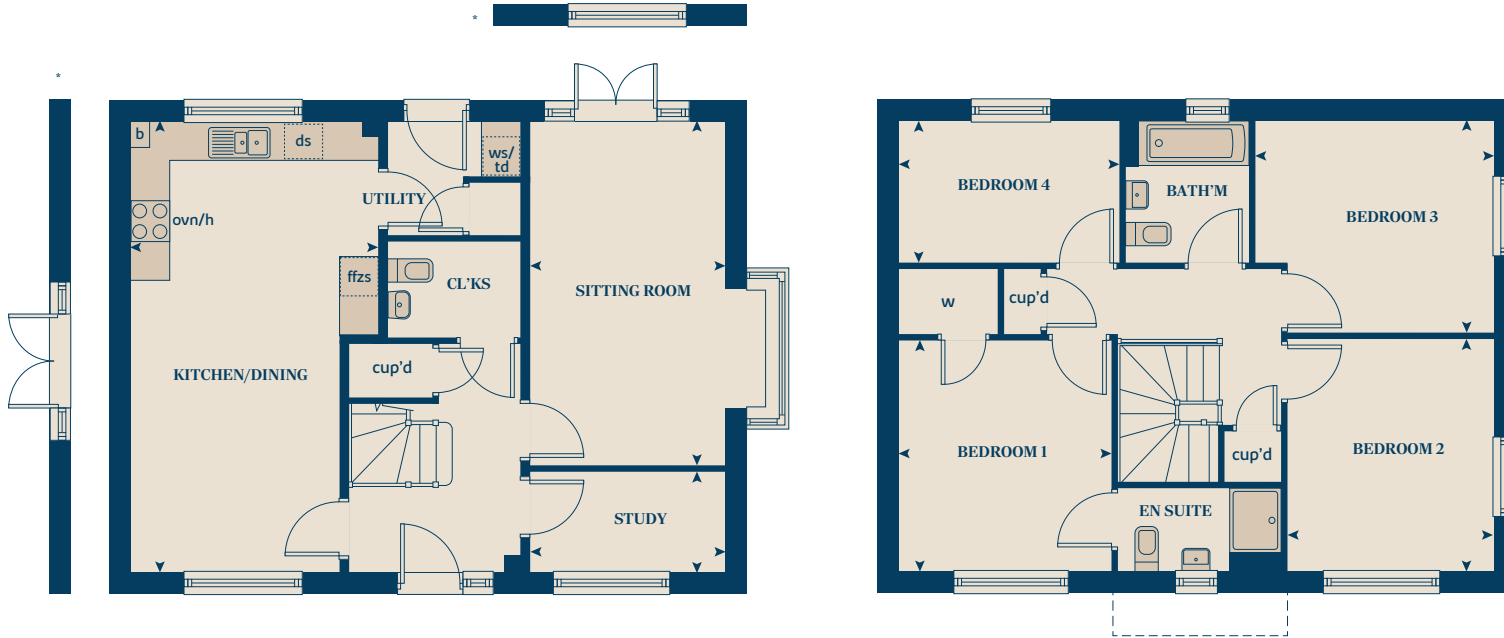
< >	measuring points	ds	dishwasher space
ws	washing machine space	cup'd	cupboard
h		b	boiler
ovn	oven	w	wardrobe
ffzs	fridge freezer space	CYL	hot water cylinder

The floorplan has been produced for illustrative purposes only. Room sizes shown are between arrow points as indicated on plan. The dimensions have tolerances of + or -50mm and should not be used other than for general guidance. If specific dimensions are required, enquiries should be made to the sales consultant. The floor plans shown are not to scale. Measurements are based on the original drawings. Slight variations may occur during construction. The illustrations shown are computer generated impressions of how the property may look and are indicative only. External details or finishes may vary on individual plots and homes may be built in either detached or attached styles depending on the development layout. Exact specifications, window styles and whether a property is left or right-handed may differ from plot to plot. Please speak to our sales consultant for specific plot details.



THE CHESTNUT

4 bedroom home



GROUND FLOOR

	METRES	FEET/INCHES
Kitchen/dining area	7.00 x 3.85	22'11" x 12'8"
Sitting room	5.36 x 3.03	17'7" x 9'11"
Study	3.03 x 1.59	9'11" x 5'1"

FIRST FLOOR

	METRES	FEET/INCHES
Bedroom 1	3.60 x 3.31	11'9" x 10'10"
Bedroom 2	3.61 x 3.20	11'10" x 10'6"
Bedroom 3	3.70 x 3.30	12'2" x 10'9"
Bedroom 4	3.42 x 2.20	11'3" x 7'3"

* French door and window variation to plot 948

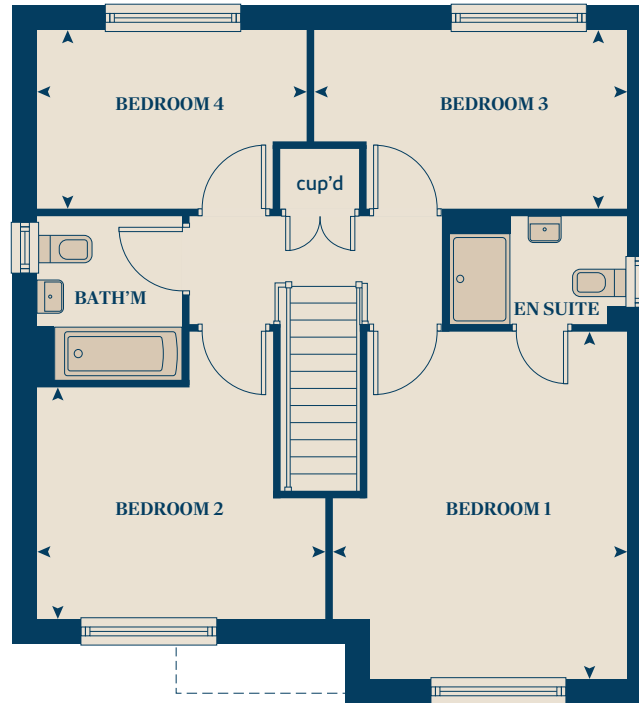
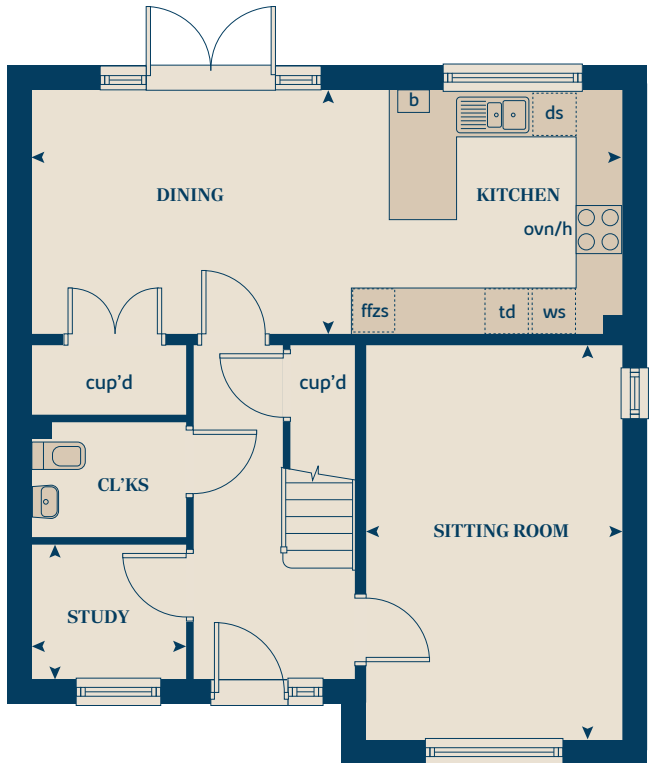
< >	measuring points	ffzs	fridge freezer space
ws	washing machine space	ds	dishwasher space
td	tumble dryer space	cup'd	cupboard
h	hob	b	boiler
ovn	oven	w	wardrobe

The floorplan has been produced for illustrative purposes only. Room sizes shown are between arrow points as indicated on plan. The dimensions have tolerances of + or -50mm and should not be used other than for general guidance. If specific dimensions are required, enquiries should be made to the sales consultant. The floor plans shown are not to scale. Measurements are based on the original drawings. Slight variations may occur during construction. The illustrations shown are computer generated impressions of how the property may look and are indicative only. External details or finishes may vary on individual plots and homes may be built in either detached or attached styles depending on the development layout. Exact specifications, window styles and whether a property is left or right-handed may differ from plot to plot. Please speak to our sales consultant for specific plot details.



THE ASPEN

4 bedroom home



GROUND FLOOR	METRES	FEET/INCHES
Kitchen/dining area	7.78 x 3.22	25'6" x 10'7"
Sitting room	5.19 x 3.38	17'1" x 11'1"
Study	2.02 x 1.79	6'8" x 5'10"

FIRST FLOOR	METRES	FEET/INCHES
Bedroom 1	4.58 x 3.88	15'0" x 12'9"
Bedroom 2	3.80 x 3.07	12'6" x 10'1"
Bedroom 3	4.13 x 2.35	13'7" x 7'9"
Bedroom 4	3.56 x 2.35	11'8" x 7'9"

* Window plot 1072 only

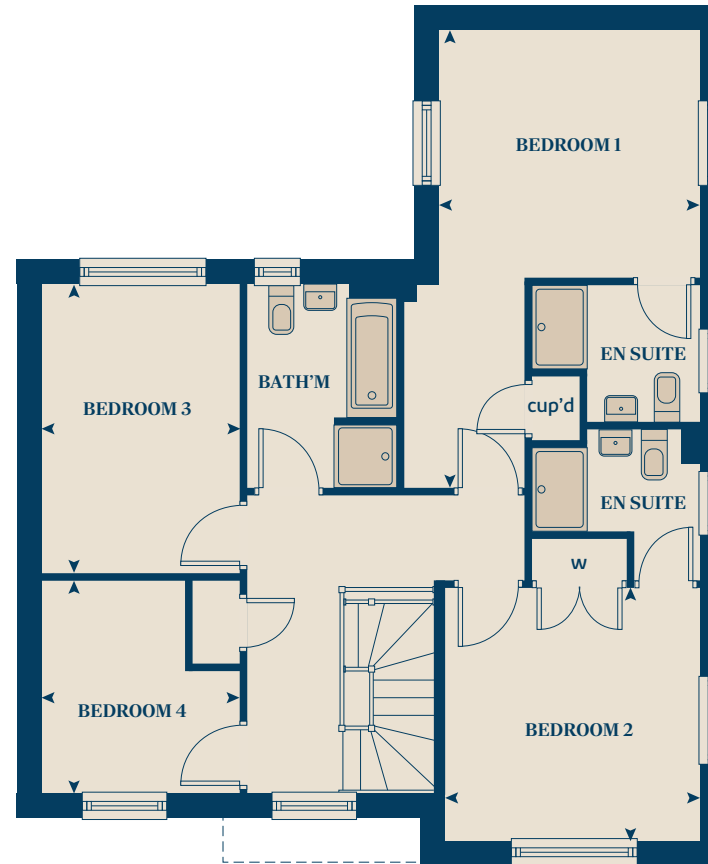
< >	measuring points	ffzs	fridge freezer space
ws	washing machine space	ds	optional dishwasher space
td	tumble dryer space	cup'd	cupboard
h	hob	b	boiler
ovn	oven		

The floorplan has been produced for illustrative purposes only. Room sizes shown are between arrow points as indicated on plan. The dimensions have tolerances of + or -50mm and should not be used other than for general guidance. If specific dimensions are required, enquiries should be made to the sales consultant. The floor plans shown are not to scale. Measurements are based on the original drawings. Slight variations may occur during construction. The illustrations shown are computer generated impressions of how the property may look and are indicative only. External details or finishes may vary on individual plots and homes may be built in either detached or attached styles depending on the development layout. Exact specifications, window styles and whether a property is left or right-handed may differ from plot to plot. Please speak to our sales consultant for specific plot details.



THE MAPLE

4 bedroom home



GROUND FLOOR	METRES	FEET/INCHES
Kitchen	3.86 x 3.67	12'8" x 12'0"
Family/dining area	7.14 x 2.94	23'5" x 9'7"
Sitting room	4.56 x 3.59	14'11" x 11'9"
Study	2.59 x 2.12	8'6" x 6'11"

FIRST FLOOR	METRES	FEET/INCHES
Bedroom 1	6.49 x 3.67	21'3" x 12'0"
Bedroom 2	3.64 x 3.60	11'11" x 11'9"
Bedroom 3	4.10 x 2.80	13'6" x 9'2"
Bedroom 4	2.80 x 3.03	9'2" x 9'11"

< >	measuring points	ffzs	fridge freezer space
ws	washing machine space	ds	dishwasher space
td	tumble dryer space	cup'd	cupboard
h		b	boiler
ovn	oven	CYL	hot water cylinder

The floorplan has been produced for illustrative purposes only. Room sizes shown are between arrow points as indicated on plan. The dimensions have tolerances of + or -50mm and should not be used other than for general guidance. If specific dimensions are required, enquiries should be made to the sales consultant. The floor plans shown are not to scale. Measurements are based on the original drawings. Slight variations may occur during construction. The illustrations shown are computer generated impressions of how the property may look and are indicative only. External details or finishes may vary on individual plots and homes may be built in either detached or attached styles depending on the development layout. Exact specifications, window styles and whether a property is left or right-handed may differ from plot to plot. Please speak to our sales consultant for specific plot details.



THE BRIAR

4 bedroom home



GROUND FLOOR

	METRES	FEET/INCHES
Kitchen/dining area	8.12 x 2.96	26'8" x 9'9"
Sitting room	5.80 x 3.04	19'0" x 9'11"
Study	3.04 x 2.27	9'12" x 7'5"

FIRST FLOOR

	METRES	FEET/INCHES
Bedroom 1	3.99 x 3.15	13'1" x 10'4"
Bedroom 2	3.95 x 3.01	12'11" x 9'11"
Bedroom 3	4.06 x 3.01	13'3" x 9'10"
Bedroom 4	3.15 x 2.50	10'4" x 8'2"

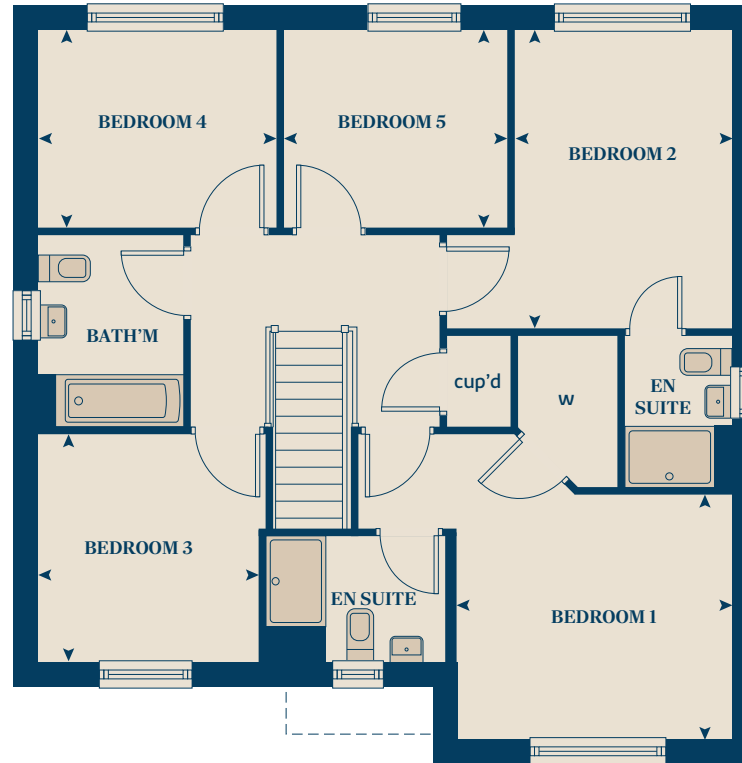
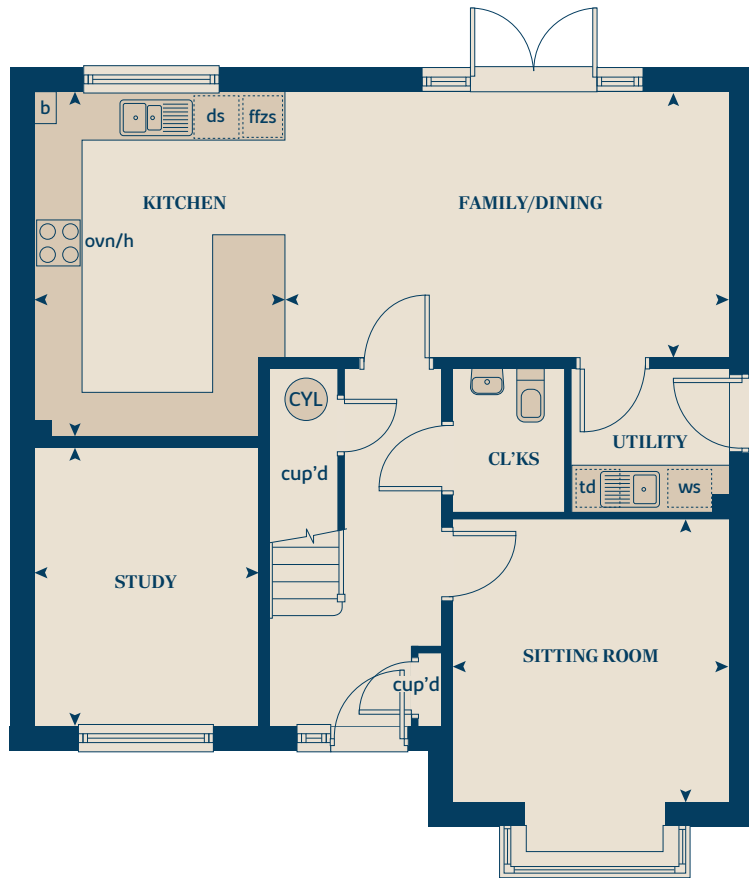
< >	measuring points	ffzs	fridge freezer space
ws	washing machine space	ds	dishwasher space
td	tumble dryer space	cup'd	cupboard
h		b	boiler
ovn	oven	w	wardrobe

The floorplan has been produced for illustrative purposes only. Room sizes shown are between arrow points as indicated on plan. The dimensions have tolerances of + or -50mm and should not be used other than for general guidance. If specific dimensions are required, enquiries should be made to the sales consultant. The floor plans shown are not to scale. Measurements are based on the original drawings. Slight variations may occur during construction. The illustrations shown are computer generated impressions of how the property may look and are indicative only. External details or finishes may vary on individual plots and homes may be built in either detached or attached styles depending on the development layout. Exact specifications, window styles and whether a property is left or right-handed may differ from plot to plot. Please speak to our sales consultant for specific plot details.



THE BIRCH

5 bedroom home



GROUND FLOOR	METRES	FEET/INCHES
Kitchen	4.54 x 3.30	14'10" x 10'9"
Family/dining area	5.86 x 3.49	19'2" x 11'5"
Sitting room	3.75 x 3.63	12'3" x 11'11"
Study	3.66 x 2.95	12'0" x 9'8"

FIRST FLOOR	METRES	FEET/INCHES
Bedroom 1	3.63 x 3.22	11'11" x 10'7"
Bedroom 2	3.95 x 2.87	13'0" x 9'5"
Bedroom 3	3.01 x 2.91	9'11" x 9'6"
Bedroom 4	3.14 x 2.61	10'3" x 8'7"
Bedroom 5	2.94 x 2.61	9'8" x 8'7"

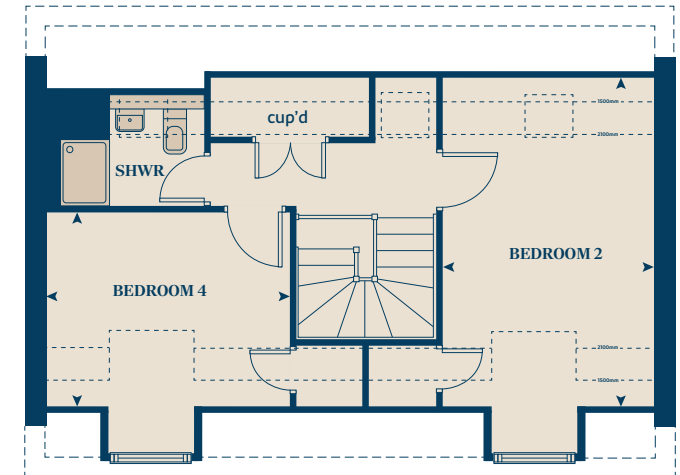
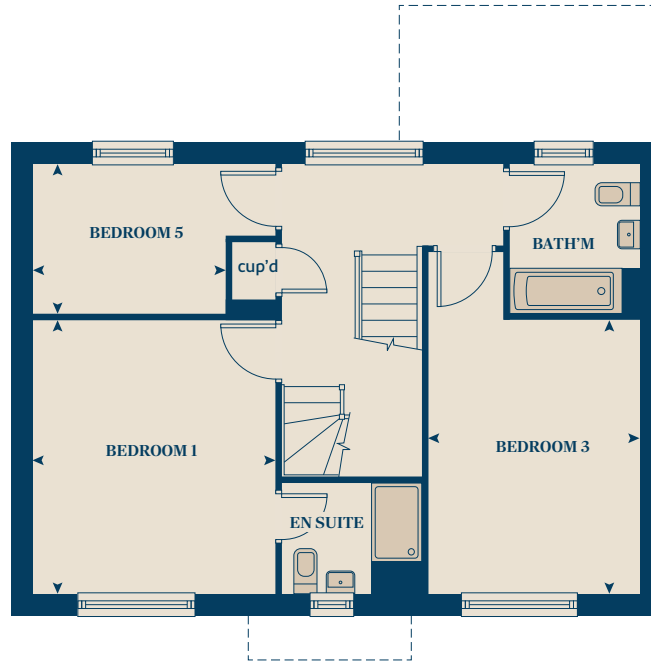
< >	measuring points	ds	dishwasher space
ws	washing machine space	cup'd	cupboard
td	tumble dryer space	b	boiler
h		w	wardrobe
ovn	oven	CYL	hot water cylinder
ffzs	fridge freezer space		

The floorplan has been produced for illustrative purposes only. Room sizes shown are between arrow points as indicated on plan. The dimensions have tolerances of + or -50mm and should not be used other than for general guidance. If specific dimensions are required, enquiries should be made to the sales consultant. The floor plans shown are not to scale. Measurements are based on the original drawings. Slight variations may occur during construction. The illustrations shown are computer generated impressions of how the property may look and are indicative only. External details or finishes may vary on individual plots and homes may be built in either detached or attached styles depending on the development layout. Exact specifications, window styles and whether a property is left or right-handed may differ from plot to plot. Please speak to our sales consultant for specific plot details.



THE YEW

5 bedroom home



GROUND FLOOR

	METRES	FEET/INCHES
Kitchen	3.80 x 3.17	12'5" x 10'4"
Dining area	4.66 x 3.17	15'3" x 10'4"
Sitting room	6.55 x 3.15	21'5" x 10'4"

FIRST FLOOR

	METRES	FEET/INCHES
Bedroom 1	4.19 x 3.71	13'9" x 12'2"
Bedroom 3	4.18 x 3.20	13'10" x 10'8"
Bedroom 5	2.94 x 2.27	9'7" x 7'5"

SECOND FLOOR

	METRES	FEET/INCHES
Bedroom 2	5.04 x 3.20	16'6" x 10'6"
Bedroom 4	3.08 x 2.97	10'1" x 9'8"

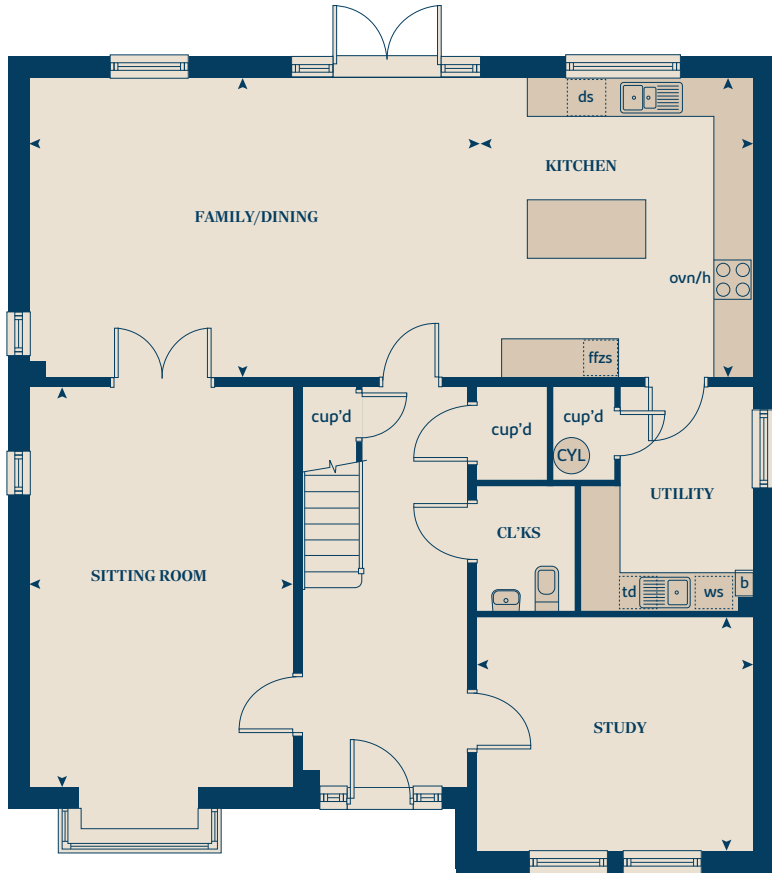
◀ ▶	measuring points	ds	dishwasher space
ws	washing machine space	cup'd	cupboard
td	tumble dryer space	b	boiler
h		w	wardrobe
ovn	oven	CYL	hot water cylinder
ffzs	fridge freezer space		

The floorplan has been produced for illustrative purposes only. Room sizes shown are between arrow points as indicated on plan. The dimensions have tolerances of + or -50mm and should not be used other than for general guidance. If specific dimensions are required, enquiries should be made to the sales consultant. The floor plans shown are not to scale. Measurements are based on the original drawings. Slight variations may occur during construction. The illustrations shown are computer generated impressions of how the property may look and are indicative only. External details or finishes may vary on individual plots and homes may be built in either detached or attached styles depending on the development layout. Exact specifications, window styles and whether a property is left or right-handed may differ from plot to plot. Please speak to our sales consultant for specific plot details.



THE PINE

5 bedroom home



GROUND FLOOR	METRES	FEET/INCHES
Kitchen	4.67 x 4.25	15'3" x 11'3"
Family/dining area	7.02 x 4.67	23'0" x 15'3"
Sitting room	6.23 x 4.10	20'5" x 13'5"
Study	4.30 x 3.65	14'3" x 12'11"

FIRST FLOOR	METRES	FEET/INCHES
Bedroom 1	4.93 x 4.30	16'2" x 14'11"
Bedroom 2	6.24 x 4.16	20'5" x 13'7"
Bedroom 3	4.04 x 3.59	13'3" x 11'9"
Bedroom 4	4.45 x 4.30	14'7" x 14'11"
Bedroom 5	3.59 x 2.73	11'9" x 8'11"

< >	measuring points	ffzs	fridge freezer space
ws	washing machine space	ds	dishwasher space
td	tumble dryer space	cup'd	cupboard
h		b	boiler
ovn	oven	CYL	hot water cylinder

The floorplan has been produced for illustrative purposes only. Room sizes shown are between arrow points as indicated on plan. The dimensions have tolerances of + or -50mm and should not be used other than for general guidance. If specific dimensions are required, enquiries should be made to the sales consultant. The floor plans shown are not to scale. Measurements are based on the original drawings. Slight variations may occur during construction. The illustrations shown are computer generated impressions of how the property may look and are indicative only. External details or finishes may vary on individual plots and homes may be built in either detached or attached styles depending on the development layout. Exact specifications, window styles and whether a property is left or right-handed may differ from plot to plot. Please speak to our sales consultant for specific plot details.



A UNIQUE SPECIFICATION

Every home comes thoughtfully designed and beautifully appointed with a high-quality standard specification that reflects our commitment to craftsmanship and comfort. From sleek, contemporary kitchens, to stylish bathrooms featuring modern fittings and elegant tiling, every detail has been carefully considered.

Energy-efficient heating systems, double-glazed windows, and superior insulation ensure your home is as practical as it is beautiful. With a focus on both form and function, our standard specification offers everything you need to move in and start enjoying your new lifestyle from day one.

- Fitted as standard - included in the property
- * Subject to stage of construction

This specification indicates, by means of a dot (.), the items that are included within the home. If there is no dot in a column, the item is not included. Any item not expressly listed or indicated within this specification is excluded from the standard build. For information on the Select, Enhance or Personalise upgrade options available depending on build stage, please speak with a Sales Consultant. The specification shown in this leaflet is correct at the time of going to press. Bovis Homes is continually reviewing and updating the specification on all housetypes and therefore reserves the right to change specification details. Photographs depict a typical Bovis Homes interior and may include optional upgrades.

2 bedroom
THE HOLLY
THE BUCKTHORN
THE CEDAR
THE LARCH
THE HAZEL
3 bedroom
THE ROWAN
THE SPRUCE
THE CYPRESS
THE BEECH
4 bedroom
THE WILLOW
THE JUNIPER
THE CHESTNUT
THE ASPEN
THE MAPLE
THE BRIAR
5 bedroom
THE BIRCH
THE YEW
THE PINE

KITCHEN

Choice of standard range kitchen (doors & worktops)*	■	■	■	■	■	■	■	■	■										
Choice of premium fitted kitchen (doors & worktops)*										■	■	■	■	■	■	■	■	■	
Stainless steel sink and drainer (single bowl) with chrome mixer tap	■	■	■	■	■														
Stainless steel sink and drainer (single and a half bowl) with chrome mixer tap						■	■	■	■	■	■	■	■	■	■	■	■	■	■
Stainless steel sink and drainer (single bowl) with chrome mixer tap in utility								■	■			■		■	■	■	■	■	■
Indesit hob (60cm) with built-in single underoven, with stainless steel splashback and curved glass chimney hood	■	■	■	■	■	■	■	■	■										
Bosch (75cm) hob with built-in double high level oven, with glass splashback and stainless steel pyramid chimney hood										■	■	■	■	■	■	■	■	■	■
Pendant light fitting	■	■	■	■	■	■	■	■	■										
Pre-wired for under-unit lighting option	■	■	■	■	■	■	■	■	■										
LED under-unit lighting option										■	■	■	■	■	■	■	■	■	■
Dimmable downlighters										■	■	■	■	■	■	■	■	■	■
Fridge / freezer space	■	■	■	■	■	■	■	■	■										
Integrated fridge freezer										■	■	■	■	■	■	■	■	■	■
Space for integrated dishwasher with plumbing and electrics	■	■	■	■	■	■	■	■	■										
Integrated Dishwasher										■	■	■	■	■	■	■	■	■	■
Space for washing machine with plumbing and electrics in kitchen	■	■	■	■	■	■			■	■		■	■						
Space for washing machine with plumbing and electrics in utility							■	■				■		■	■	■	■	■	■

BATHROOMS AND EN SUITE(S)

Ideal Standard contemporary white Concept Air sanitaryware	■	■	■	■	■	■	■	■	■	■	■	■	■	■	■	■	■	■	■
Ideal Standard close coupled WC to cloakroom	■	■	■	■	■	■	■	■	■	■	■	■	■	■	■	■	■	■	■
Handheld hair wash attachment	■				■	■	■	■	■	■	■	■	■	■	■	■	■	■	■
Shower over the bath (full height tiling to length and side of bath)		■	■	■															
Ideal Standard low profile shower tray with glass enclosure to bedroom 1 en suite	■				■	■	■	■	■	■	■	■	■	■	■	■	■	■	■
Choice of standard Porcelanosa wall tiling (splashback, 450mm over bath, and full-height to shower cubicle)*	■	■	■	■	■	■	■	■	■	■	■	■	■	■	■	■	■	■	■
Chrome bezel LED bulkhead to bathroom and en suite(s)	■	■	■	■	■	■	■	■	■	■	■	■	■	■	■	■	■	■	■

2 bedroom
THE HOLLY
THE BUCKTHORN
THE CEDAR
THE LARCH
THE HAZEL
3 bedroom
THE ROWAN
THE SPRUCE
THE CYPRESS
THE BEECH
4 bedroom
THE WILLOW
THE JUNIPER
THE CHESTNUT
THE ASPEN
THE MAPLE
THE BRIAR
5 bedroom
THE BIRCH
THE YEW
THE PINE

DOORS AND WINDOWS

Front door with multi-point security locking system and security chain	■	■	■	■	■	■	■	■	■	■	■	■	■	■	■	■	■
Chrome plated front door numerals	■	■	■	■	■	■	■	■	■	■	■	■	■	■	■	■	■
PVCu double glazing to windows	■	■	■	■	■	■	■	■	■	■	■	■	■	■	■	■	■
Double glazed PVCu French doors	■	■	■	■	■	■	■	■	■	■	■	■	■	■	■	■	■
Internal cottage style pre-primed doors with brass satin finish handles	■	■	■	■	■	■	■	■	■	■	■	■	■	■	■	■	■
Paving outside French / bi-fold door and path to garage personnel door (where applicable)	■	■	■	■	■	■	■	■	■	■	■	■	■	■	■	■	■

GENERAL

White painted walls and smooth white ceilings	■	■	■	■	■	■	■	■	■	■	■	■	■	■	■	■	■
Combined USB / double sockets in kitchen and bedroom 1	■	■	■	■	■	■	■	■	■	■	■	■	■	■	■	■	■
Multi-media point in living room	■	■	■	■	■	■	■	■	■	■	■	■	■	■	■	■	■
TV point to bedroom 1 and family room (where applicable)	■	■	■	■	■	■	■	■	■	■	■	■	■	■	■	■	■
Master telephone socket to sitting room and study (where applicable)	■	■	■	■	■	■	■	■	■	■	■	■	■	■	■	■	■
Gas central heating with wall mounted combi-boiler, programme selector and room thermostat(s)	■	■	■	■	■	■	■	■	■	■	■	■	■	■	■	■	■
Thermostatic valves to all radiators (with the exception of rooms with separate thermostat control)	■	■	■	■	■	■	■	■	■	■	■	■	■	■	■	■	■
Fitted external tap	■	■	■	■	■	■	■	■	■	■	■	■	■	■	■	■	■
External light fitted to front porch and wiring for external light to rear door	■	■	■	■	■	■	■	■	■	■	■	■	■	■	■	■	■
Mains wired smoke detectors with battery back-up	■	■	■	■	■	■	■	■	■	■	■	■	■	■	■	■	■
Battery powered Carbon Monoxide detector (wall mounted) to be provided for each floor	■	■	■	■	■	■	■	■	■	■	■	■	■	■	■	■	■
Power and lighting to 'on plot' garage (where applicable)	■	■	■	■	■	■	■	■	■	■	■	■	■	■	■	■	■
Enclosed fenced rear garden, and garden gate (where applicable)	■	■	■	■	■	■	■	■	■	■	■	■	■	■	■	■	■
Landscaped front gardens	■	■	■	■	■	■	■	■	■	■	■	■	■	■	■	■	■
NHBC Buildmark cover	■	■	■	■	■	■	■	■	■	■	■	■	■	■	■	■	■
First two years' customer service support from Bovis Homes	■	■	■	■	■	■	■	■	■	■	■	■	■	■	■	■	■










A COMMUNITY TO BE PROUD OF



We believe that a truly special home extends beyond its walls—it's shaped by the community and environment that surround it. At **Sherford**, we're proud to do more than build beautiful homes; we invest in the future of the area and the people who live here. Working closely with the local council, contributions are tailored to meet the unique needs of the growing community, ensuring every commitment makes a meaningful difference. From enhancing green spaces to supporting local services, we've contributed towards local initiatives that nurture both community spirit and environmental wellbeing. Because when you move into a Bovis home, you're not just moving into a home - you're joining a community and becoming part of something truly lasting at **Sherford**.

COMMUNITY CONTRIBUTIONS INCLUDE:

IMPROVED PUBLIC TRANSPORT FACILITIES 	PUBLIC OPEN SPACES 	NEW COMMUNITY FACILITIES 	CYCLE ROUTES 
PRIMARY AND SECONDARY EDUCATION 	CHILDREN'S PLAY AREAS 	HIGHWAY AND ROAD IMPROVEMENT 	

GREEN INITIATIVES FOUND AT SHERFORD:

ADDITIONAL TREES PLANTED 	
BAT / BIRD BOXES 	A+ RATED DOUBLE-GLAZED WINDOWS 



MAKE YOUR NEW HOME TRULY YOURS WITH UPGRADES AND EXTRAS FROM OUR EXCLUSIVE **SELECT** RANGE

Bring Your Dream Home to Life with Select

At Sherford, your new home already comes with a unique and thoughtfully designed specification—but with our **exclusive Select** range, you can go even further.

This is your opportunity to add those special touches that make a house feel like home. Whether it's a sleek, contemporary kitchen with upgraded premium worktops and the latest appliances, or a bathroom finished with elegant ceramics, Select gives you the freedom to shape every detail.

From kitchen cupboards and lighting to built-in wardrobes and flooring, you'll find a wide range of beautiful options to suit your style. Choose from plush carpets, stylish Amtico flooring, or timeless ceramic tiles—each one helping to create a space that reflects you.

Every choice you make brings your vision closer to reality. And with the guidance of our friendly sales consultants, you'll have expert support every step of the way.

Pick up a **Select** brochure from your sales consultant today to find an extensive list of items available. Such as:

- **Quartz kitchen worktops**
- **Premium appliance packages**
- **Flooring**
- **Built-in wardrobes**
- **Upgraded tiling in main bathroom and en suite**



PURCHASE ASSISTANCE SCHEMES

No matter where you are on your home-buying journey - taking your first step, moving up the ladder, or looking to rightsize - we've got a range of fantastic purchase assistance schemes designed to make your move smoother and more achievable.

SMOOTH MOVE

Smooth Move is our scheme for all existing property owners to save time and money. We deal with the estate agents to sell your home and even pay the estate agents' fees!



HOME EXCHANGE

With Home Exchange you can have peace of mind knowing that we are your guaranteed buyer, meaning you'll have a chain-free move without the estate agents' fees.



KEY WORKER

Helping essential key workers get on the housing ladder with assistance from Bovis Homes and access to purchase assistance schemes requiring as little as a 5% deposit.



ARMED FORCES

Helping members of the Armed Forces to own a home with assistance from Bovis Homes, the government and the Ministry of Defence.



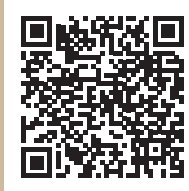
DEPOSIT UNLOCK

With Deposit Unlock, whether you are a first time or next time buyer, you could purchase a new Bovis Home with just a 5% deposit up to the value of £750,000!





SCAN FOR DIRECTIONS



SHERFORD

116 Hercules Road,
Sherford, Plymouth
PL9 8FA

01752 281 283

Every care has been taken in the preparation of this brochure. Bovis Homes operates a programme of continuous product development.

Features, internal and external, may vary from time to time and may differ from those shown in this brochure.

The development layout, landscaping and tenure of all dwellings may be subject to change throughout the course of the development.

Computer generated images, maps, photography, and imagery are intended for illustrative purposes. Features, designs, materials, and visual depictions must be treated as general guidance only. Please speak to a sales consultant for details of specific homes.

Vistry Cornwall South West region

Camberwell House, Grenadier Road, Exeter Business Park, Exeter, Devon EX1 3QF. Telephone: 01392 880 380

Produced by ThinkBDW DS16400 05/26

When you have finished with this brochure please recycle it.


Bovis Homes
Est. 1885