

# Quantum Fields

Littleport





# Quantum Fields

Littleport

A taste of local life

[bovishomes.co.uk](http://bovishomes.co.uk)

**Bovis  
Homes** 



# Welcome to Quantum Fields

This exciting new development is in the thriving Cambridgeshire village of Littleport, less than five miles from the historic cathedral city of Ely.

Nestled beside the River Great Ouse, Littleport is a bustling community with shops, a post office, supermarket, pubs and takeaways. It also has a pharmacy and medical centre as well as schools, sports and leisure facilities and public parks.

It's only 1.5 miles to Littleport Railway Station from where trains run to Ely, Cambridge, and London King's Cross, which takes 1.5 hours. It's a ten-minute drive to Ely via the nearby A10, which leads on to Cambridge, 22 miles away and the A14, the region's major trunk road.

At nearby Ely you'll find cinemas, events venues, an array of shops, supermarkets, museums, art galleries, restaurants, pubs and sports clubs – including rowing and sailing.

Our range of 2, 3 and 4 bedroom homes at Quantum Fields are designed to embrace contemporary living with popular features such as open-plan living, stylish fitted kitchens and master bedrooms with en suite.

So, if you're looking for a quality new home in a village close to an historic city, your search ends here!



# The perfect position

## Education for everyone

Littleport has a number of pre-schools for toddlers, while for young pupils Millfield Primary School is on the doorstep in Grange Lane. Littleport Community Primary, is 2 miles away. For senior pupils Littleport & East Cambridgeshire

Academy caters for 11 to 16-year-olds and is only a few minutes' walk.

In Ely, 5 miles away, Bishop Laney Sixth Form, part of Ely College, takes students aged 16 to 18.


**Littleport Leisure**  
2 miles | 5 mins drive

5 mins



**Littleport Skatepark**  
1 mile | 21 mins walk

21 mins



**Ely City Golf Club**  
5 miles | 9 mins drive

9 mins



**Littleport Railway Station**  
1 mile | 16 mins walk

16 mins



**Ely Country Park**  
5.5 miles | 12 mins drive

12 mins




**Littleport Post Office**  
1 mile | 15 mins walk

15 mins



**Roswell Pits Nature Reserve**  
6 miles | 16 mins drive

16 mins



**Thetford Forest Park**  
21 miles | 36 mins drive

36 mins



Quantum Fields



# A community to be proud of

We know that the area surrounding your new home is just as important as the features within your new property. As well as bringing a range of new homes to the area, we also make a commitment, these commitments are chosen based on the needs of our new community and we work with the local council to deliver them. We are proud to have invested over **£3.3 million** in local schemes to support the community surrounding your new home in Littleport.

These schemes include:

Public open space maintenance



Improved public transport services



Footpath contribution



Waste management



Highway contribution



“Bovis Homes has invested more than **£3.3 million** towards community schemes”

# Personalise your new home with upgrades and extras from our **Select** range, where the choice is yours

Customise your kitchen with stylish worktops and the latest modern appliances and personalise your bathrooms with stunning ceramics.

Using the **Select** range there are various options allowing you to create your perfect property which is truly unique to you.

You can personalise every space in your home from kitchen cupboards and electrics to built in wardrobes and if you have a preference for flooring, you can select from our diverse range that includes luxurious carpets, ceramics and vinyl.

Pick up a **Select** brochure sales consultant today to find an extensive list of items available, including:

- Silestone worktops
- A selection of kitchen packages including integrated appliances
- Flooring
- Built-in wardrobes
- Upgraded tiling and many more!

The choice is yours - with **Select**.



# Purchase assistance schemes

Wherever you are in the home-buying market - a first-time buyer, looking to step up the property ladder or a downsizer - we have a variety of great purchase assistance schemes!

## Smooth Move

Are you an existing home owner? Our Smooth Move service is designed to help you sell your old property quickly so that you can make the move into a brand new Bovis Home. We'll deal with the estate agents on your behalf, and even pay the estate agents' fees when your house is sold!

## Home Exchange

Are you an existing home owner? Our Home Exchange scheme is the simple way to make sure you don't lose out on your brand new Bovis Home - and saves you time and money along the way. We'll buy your property at market value, therefore there are no last minute 'drop-outs', you avoid estate agents fees, and there are no price renegotiations late in the day!

## Key Worker

Helping essential key workers get on the housing ladder with assistance from Bovis Homes and access to purchase assistance schemes requiring as little as a 5% deposit.

# A home designed with you in mind

We are constantly reviewing our houses and ensuring they are everything that our customers want in a home. We are proud to have developed and launched a new range of homes.

These homes have been created to embrace modern design and styling, whilst retaining classic architectural traditions. An integral part of the design process for our new range of homes was to ensure they have a real wow factor and eye-catching kerb appeal. From designing external elevations to create attractive street scenes through to maximising the flow and size of the rooms, the homes include a variety of features to capture the attention.

The size, positioning and number of windows in our new housing collection have created bright and airy homes, this mixed in with the higher ceilings gives your property a spacious feel.

The flow and layout of the new homes has been a key consideration to accommodate today's lifestyles, with a focus on future living. With the kitchen at the heart of the home, impressive family spaces have been included within them to create sociable living areas, while attention on master bedrooms and en suites has given the homes added desirability.

Many of the properties include popular bi-fold doors helping to bring the outside in and enhance the gardens as an extended living area.



## Firm foundations means peace of mind for you

When buying a new home, you want to be sure you can trust your builder. Choosing a Bovis Home gives you the peace of mind that comes from choosing a company that has been building some of the **best homes in the UK for more than a hundred years.**

We pride ourselves on being one of the country's leading housebuilders and have established an enviable reputation for the quality of our build and design, specification and customer service.

Each Bovis Home is carefully planned both to meet your needs and to integrate into the existing location.

We will often use local materials and reflect regional features. Trees are retained wherever possible and new landscaping added, along with footpaths and cycleways in many cases to help create a wonderful place to live.

# Quantum Fields

Grange Lane, Littleport, Ely

CB6 1HW

01353 260 108

## From Ely, Cambridgeshire

- Head south on Minster Place
- Continue onto The Gallery
- At the roundabout, take the second exit onto Silver Street
- Turn right onto St Mary's Street
- Turn left onto Downham Road
- Go through one roundabout
- At the roundabout, take the third exit onto A10
- At the next roundabout, take the third exit onto Grange Lane



Cover photograph of Littleport. Not view from the development. The streetscene has been produced for illustrative purposes only, please check the details of the homes you are interested in with the sales consultant.

**Bovis Homes Limited, East Midlands region**  
Ashurst, Southgate Park, Bakewell Road, Peterborough PE2 6YS. Telephone: 01733 396600

Produced by the Vistry Group Design Studio.

When you have finished with this leaflet please recycle it.

PJLITT DSXX0024 / 10.23

**Bovis  
Homes** 

# Quantum Fields

Littleport

## 2 bedroom homes

The Buckthorn

The Hawthorn

## 3 bedroom homes

The Hazel

The Spruce

The Cypress

The Beech

The Magnolia

## 4 bedroom homes

The Juniper

The Chestnut

The Aspen

The Maple

## Pre-sold homes

1 bedroom homes

2 bedroom homes

3 bedroom homes

v visitor space  
bcp bin collection point  
ss substation





# The Buckthorn

2 bedroom home

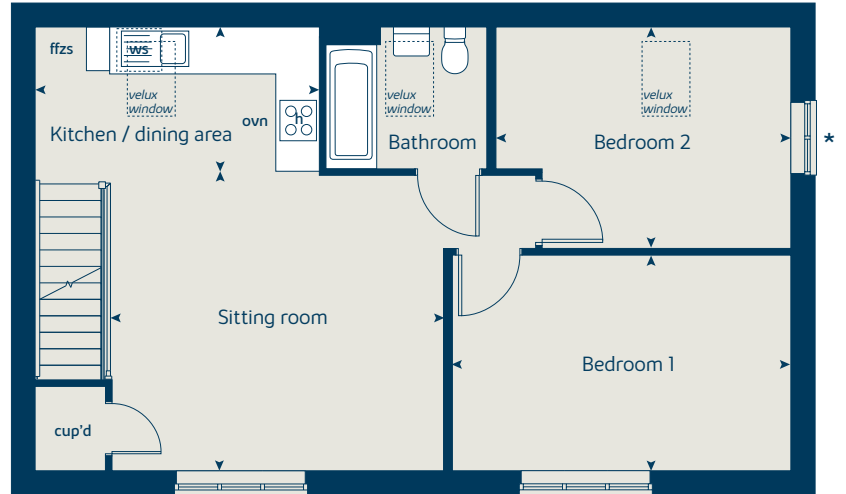
[bovishomes.co.uk](http://bovishomes.co.uk)

**Bovis  
Homes** 

# The Buckthorn

## 2 bedroom home

### First floor



First floor	metres	feet / inches
Kitchen / dining area	3.90 x 2.03	12' 10" x 6' 8"
Sitting room	4.54 x 4.05	14' 11" x 13' 4"
Bedroom 1	4.64 x 2.96	15' 3" x 9' 9"
Bedroom 2	4.04 x 3.04	13' 3" x 10' 0"

#### The Buckthorn | XF201 02 PJLITT |

This floorplan has been produced for illustrative purposes only. Room sizes shown are between arrow points as indicated on plan. The dimensions have tolerances of + or -50mm and should not be used other than for general guidance. If specific dimensions are required, enquiries should be made to the sales consultant.

\* Windows apply to selected plots only. Please see sales consultant for further details.

ovn	oven	ffzs	fridge freezer space
h	hob	cup'd	cupboard
ws	washing machine space	◀ ▶	measuring points

Please refer to the sales consultant for specific plot details as the illustrations shown are computer generated impressions of how the property may look so are indicative only. External details or finishes may vary on individual plots and homes may be built in either detached or attached styles depending on the development layout. Exact specifications, window styles and whether a property is left or right handed may differ from plot to plot.

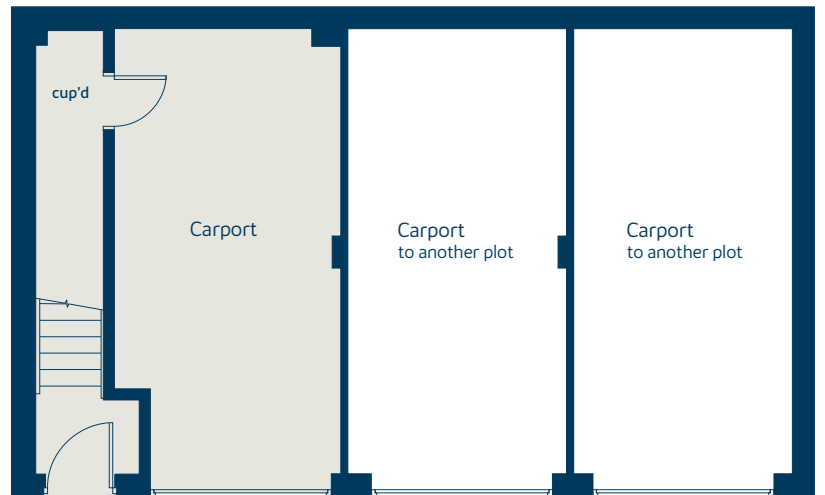
The floorplans shown are not to scale. Measurements are based on the original drawings. Slight variations may occur during construction.

Produced by the Vistry Group Design Studio.

When you have finished with this leaflet please recycle it.

PJLITT DS01373 / 08.22

### Ground floor





# The Hawthorn

2 bedroom home

[bovishomes.co.uk](http://bovishomes.co.uk)

**Bovis  
Homes** 

# The Hawthorn

## 2 bedroom home

Ground floor	metres	feet / inches
Kitchen	3.78 x 2.86	12' 5" x 9' 5"
Sitting / dining area	4.07 x 3.99	13' 4" x 13' 1"

### First floor

Bedroom 1	4.07 x 2.69	13' 4" x 8' 10"
Bedroom 2	4.07 x 2.82	13' 4" x 9' 3"

### The Hawthorn | X203 02 PJJLTT |

This floorplan has been produced for illustrative purposes only. Room sizes shown are between arrow points as indicated on plan. The dimensions have tolerances of + or -50mm and should not be used other than for general guidance. If specific dimensions are required, enquiries should be made to the sales consultant.

\* Windows apply to selected plots only. Please see sales consultant for further details.

ovn	oven	ffzs	fridge freezer space
h	hob	cup'd	cupboard
ds	dishwasher space	< >	measuring points
ws	washing machine space		

Please refer to the sales consultant for specific plot details as the illustrations shown are computer generated impressions of how the property may look so are indicative only. External details or finishes may vary on individual plots and homes may be built in either detached or attached styles depending on the development layout. Exact specifications, window styles and whether a property is left or right handed may differ from plot to plot.

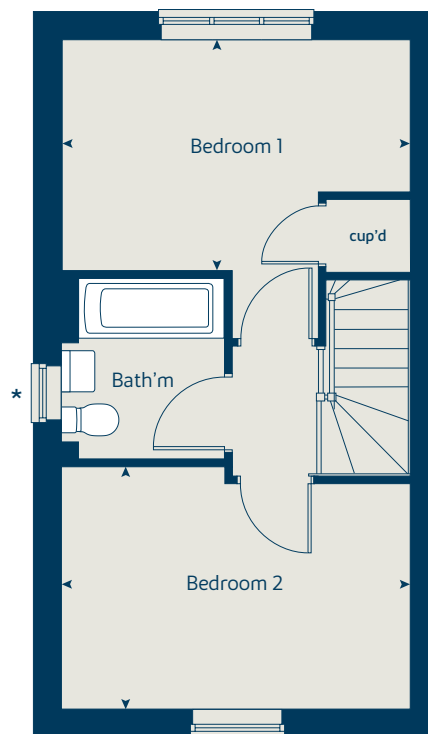
The floorplans shown are not to scale. Measurements are based on the original drawings. Slight variations may occur during construction.

Produced by the Vistry Group Design Studio.

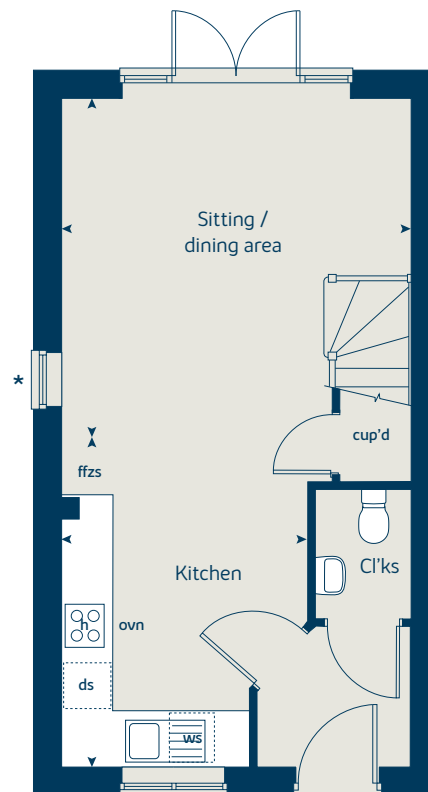
When you have finished with this leaflet please recycle it.

PJJLTT DS01373 / 08.22

### First floor



### Ground floor





# The Hazel

3 bedroom home

[bovishomes.co.uk](http://bovishomes.co.uk)



# The Hazel

## 3 bedroom home

Ground floor	metres	feet / inches
Kitchen / dining room	5.19 x 2.99	17' 0" x 9' 10"
Sitting room	4.17 x 3.66	13' 8" x 12' 0"

First floor	metres	feet / inches
Bedroom 1	3.54 x 3.29	11' 7" x 10' 9"
Bedroom 2	2.95 x 2.72	9' 8" x 8' 11"
Bedroom 3	3.48 x 2.15	11' 5" x 7' 1"

### The Hazel | X305 03 PJLITT |

This floorplan has been produced for illustrative purposes only. Room sizes shown are between arrow points as indicated on plan. The dimensions have tolerances of + or -50mm and should not be used other than for general guidance. If specific dimensions are required, enquiries should be made to the sales consultant.

\* Windows apply to selected plots only. Please see sales consultant for further details.

ovn	oven	ffzs	fridge freezer space
h	hob	cup'd	cupboard
ds	dishwasher space	< >	measuring points
ws	washing machine space		

Please refer to the sales consultant for specific plot details as the illustrations shown are computer generated impressions of how the property may look so are indicative only. External details or finishes may vary on individual plots and homes may be built in either detached or attached styles depending on the development layout. Exact specifications, window styles and whether a property is left or right handed may differ from plot to plot.

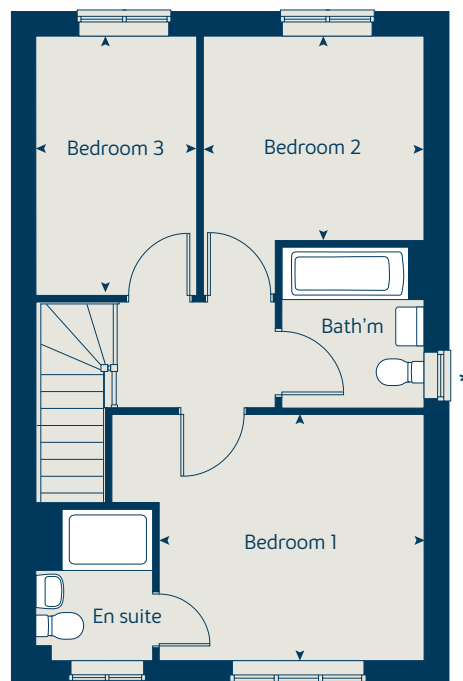
The floorplans shown are not to scale. Measurements are based on the original drawings. Slight variations may occur during construction.

Produced by the Vistry Group Design Studio.

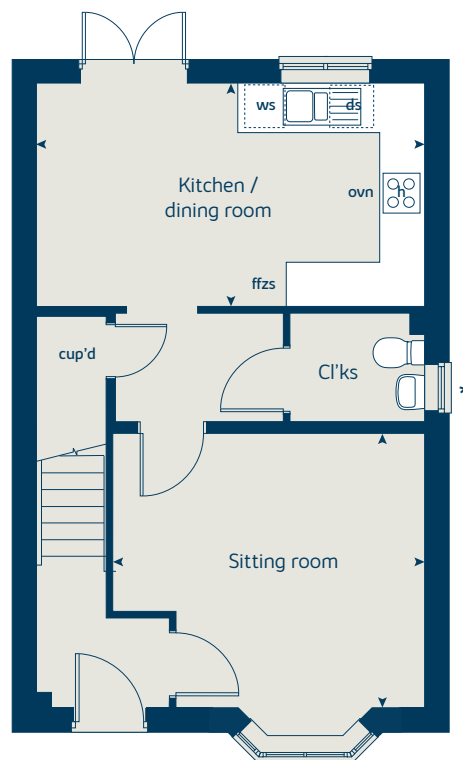
When you have finished with this leaflet please recycle it.

PJLITT DS01373 / 08.22

### First floor



### Ground floor





# The Hazel

3 bedroom home

[bovishomes.co.uk](http://bovishomes.co.uk)



# The Hazel

## 3 bedroom home

Ground floor	metres	feet / inches
Kitchen / dining room	5.19 x 2.99	17' 0" x 9' 10"
Sitting room	4.17 x 3.66	13' 8" x 12' 0"

First floor	metres	feet / inches
Bedroom 1	3.54 x 3.29	11' 7" x 10' 9"
Bedroom 2	2.95 x 2.72	9' 8" x 8' 11"
Bedroom 3	3.48 x 2.15	11' 5" x 7' 1"

### The Hazel | X305 03 PJLITT |

This floorplan has been produced for illustrative purposes only. Room sizes shown are between arrow points as indicated on plan. The dimensions have tolerances of + or -50mm and should not be used other than for general guidance. If specific dimensions are required, enquiries should be made to the sales consultant.

\* Windows apply to selected plots only. Please see sales consultant for further details.

ovn	oven	ffzs	fridge freezer space
h	hob	cup'd	cupboard
ds	dishwasher space	◀ ▶	measuring points
ws	washing machine space		

Please refer to the sales consultant for specific plot details as the illustrations shown are computer generated impressions of how the property may look so are indicative only. External details or finishes may vary on individual plots and homes may be built in either detached or attached styles depending on the development layout. Exact specifications, window styles and whether a property is left or right handed may differ from plot to plot.

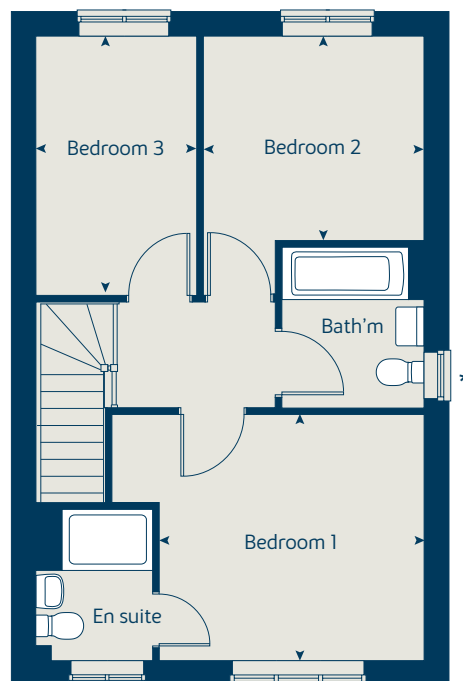
The floorplans shown are not to scale. Measurements are based on the original drawings. Slight variations may occur during construction.

Produced by the Vistry Group Design Studio.

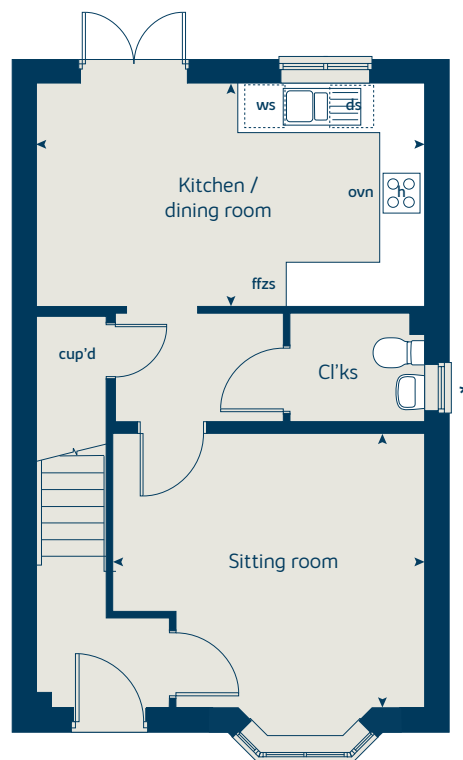
When you have finished with this leaflet please recycle it.

PJLITT DS01373 / 08.22

### First floor



### Ground floor





# The Spruce

3 bedroom home

[bovishomes.co.uk](http://bovishomes.co.uk)

**Bovis  
Homes** 

# The Spruce

3 bedroom home

Ground floor	metres	feet / inches
Kitchen	3.16 x 2.70	10' 4" x 8' 10"
Dining area	3.14 x 2.37	10' 4" x 7' 9"
Sitting room	5.53 x 3.32	18' 2" x 10' 11"

## First floor

Bedroom 1	3.33 x 2.94	10' 11" x 9' 8"
Bedroom 2	3.61 x 3.27	11' 10" x 10' 9"
Bedroom 3	3.63 x 2.17	11' 11" x 7' 2"

## The Spruce | X307 (IF) 01 PJLITT |

This floorplan has been produced for illustrative purposes only. Room sizes shown are between arrow points as indicated on plan. The dimensions have tolerances of + or -50mm and should not be used other than for general guidance. If specific dimensions are required, enquiries should be made to the sales consultant.

\* Windows apply to selected plots only. Please see sales consultant for further details.

ovn	oven	ffzs	fridge freezer space
h	hob	cup'd	cupboard
ds	dishwasher space	w	wardrobe
ws	washing machine space	<>	measuring points

Please refer to the sales consultant for specific plot details as the illustrations shown are computer generated impressions of how the property may look so are indicative only. External details or finishes may vary on individual plots and homes may be built in either detached or attached styles depending on the development layout. Exact specifications, window styles and whether a property is left or right handed may differ from plot to plot.

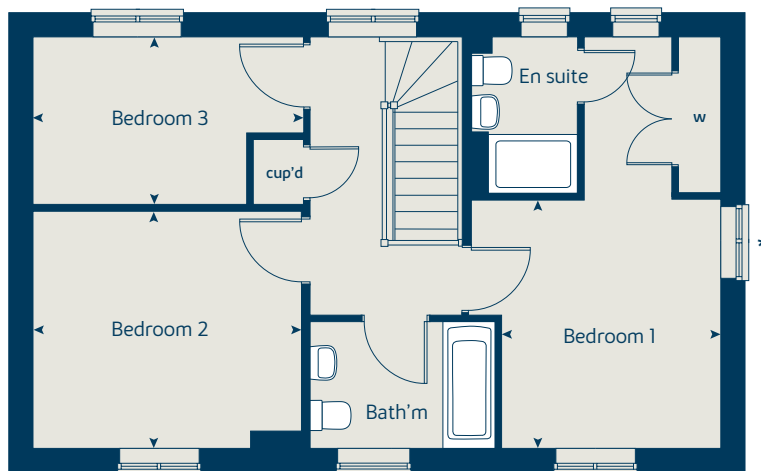
The floorplans shown are not to scale. Measurements are based on the original drawings. Slight variations may occur during construction.

Produced by the Vistry Group Design Studio.

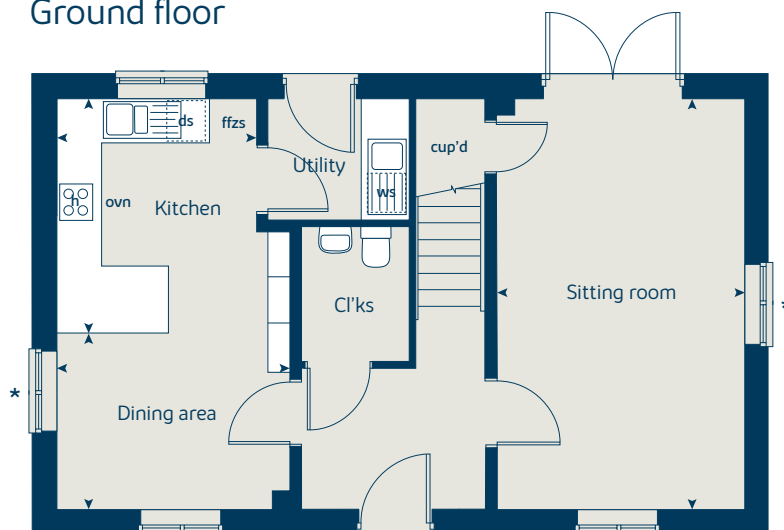
When you have finished with this leaflet please recycle it.

PJLITT DS01373 / 08.22

## First floor



## Ground floor





# The Cypress

3 bedroom home

[bovishomes.co.uk](http://bovishomes.co.uk)

**Bovis  
Homes** 

# The Cypress

## 3 bedroom home

Ground floor	metres	feet / inches
Kitchen / dining area	5.52 x 3.13	18' 2" x 10' 3"
Sitting room	4.40 x 3.40	14' 6" x 11' 2"

### First floor

Bedroom 1	4.10 x 3.28	13' 6" x 10' 9"
Bedroom 2	3.28 x 2.83	10' 9" x 9' 3"
Bedroom 3	3.52 x 2.16	11' 7" x 7' 1"

### The Cypress | X308 (IF) 01 PJJLTT |

This floorplan has been produced for illustrative purposes only. Room sizes shown are between arrow points as indicated on plan. The dimensions have tolerances of + or -50mm and should not be used other than for general guidance. If specific dimensions are required, enquiries should be made to the sales consultant.

\* Windows apply to selected plots only. Please see sales consultant for further details.

ovn	oven	ffzs	fridge freezer space
h	hob	cup'd	cupboard
ds	dishwasher space	< >	measuring points
ws	washing machine space		

Please refer to the sales consultant for specific plot details as the illustrations shown are computer generated impressions of how the property may look so are indicative only. External details or finishes may vary on individual plots and homes may be built in either detached or attached styles depending on the development layout. Exact specifications, window styles and whether a property is left or right handed may differ from plot to plot.

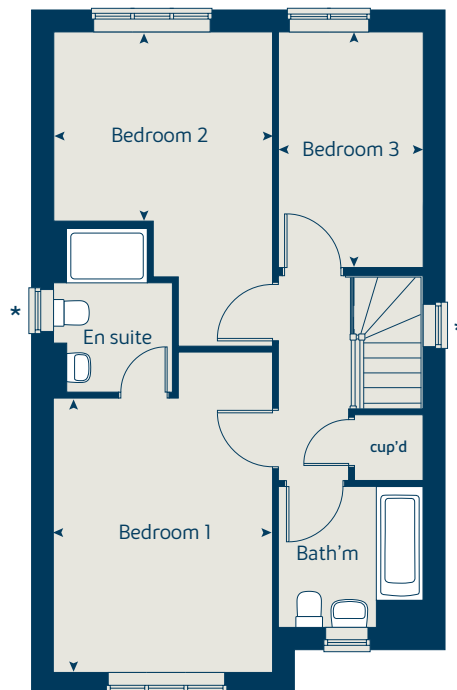
The floorplans shown are not to scale. Measurements are based on the original drawings. Slight variations may occur during construction.

Produced by the Vistry Group Design Studio.

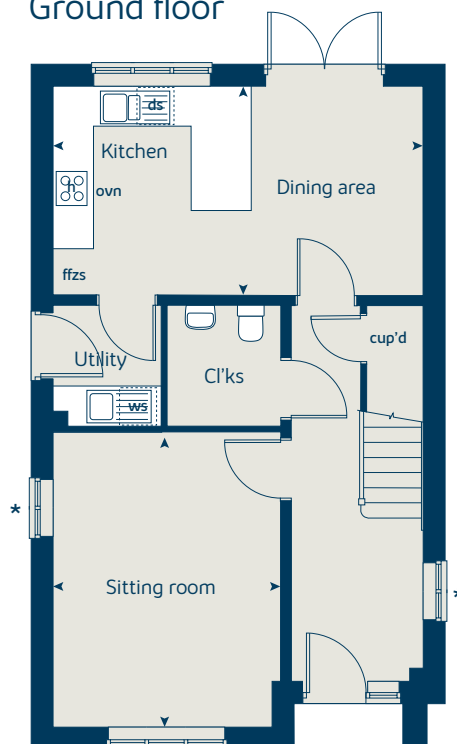
When you have finished with this leaflet please recycle it.

PJJLTT DS07420 / 08.23

### First floor



### Ground floor





# The Beech

3 bedroom home

[bovishomes.co.uk](http://bovishomes.co.uk)

**Bovis  
Homes** 

# The Beech

## 3 bedroom home

Ground floor	metres	feet / inches
Kitchen / dining room	4.74 x 2.91	15' 7" x 9' 7"
Sitting room	4.00 x 3.72	13' 1" x 12' 2"

First floor	metres	feet / inches
Bedroom 2	4.74 x 2.62	15' 7" x 8' 7"
Bedroom 3	3.39 x 2.49	11' 2" x 8' 2"

Second floor	metres	feet / inches
Bedroom 1	3.62 x 3.02	11' 11" x 9' 11"

### The Beech | X309 01 PJIITT |

This floorplan has been produced for illustrative purposes only. Room sizes shown are between arrow points as indicated on plan. The dimensions have tolerances of + or -50mm and should not be used other than for general guidance. If specific dimensions are required, enquiries should be made to the sales consultant.

\* Windows apply to selected plots only. Please see sales consultant for further details.

ovn	oven	ffzs	fridge freezer space
h	hob	cup'd	cupboard
ds	dishwasher space	< >	measuring points
ws	washing machine space		

Please refer to the sales consultant for specific plot details as the illustrations shown are computer generated impressions of how the property may look so are indicative only. External details or finishes may vary on individual plots and homes may be built in either detached or attached styles depending on the development layout. Exact specifications, window styles and whether a property is left or right handed may differ from plot to plot.

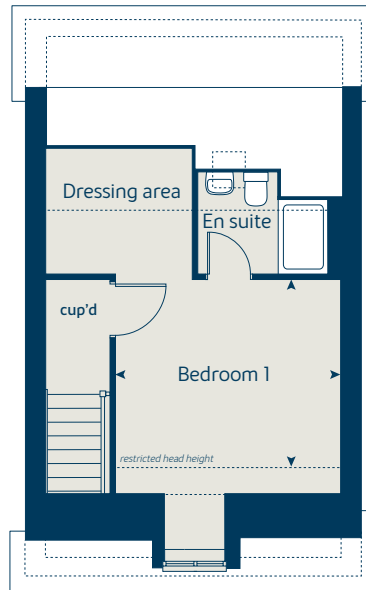
The floorplans shown are not to scale. Measurements are based on the original drawings. Slight variations may occur during construction.

Produced by the Vistry Group Design Studio.

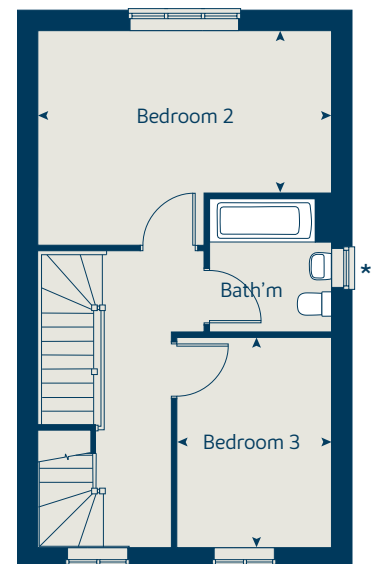
When you have finished with this leaflet please recycle it.

PJIITT DS01373 / 08.22

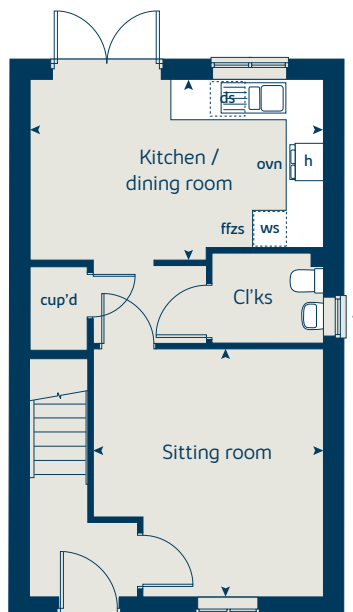
### Second floor



### First floor



### Ground floor





# The Magnolia

3 bedroom home

[bovishomes.co.uk](http://bovishomes.co.uk)

**Bovis  
Homes** 

# The Magnolia

## 3 bedroom home

Ground floor	metres	feet / inches
Kitchen / dining room	4.74 x 3.37	15' 7" x 11' 0"
Sitting room	3.72 x 3.72	12' 2" x 12' 2"

### First floor

Bedroom 1	3.06 x 2.55	10' 1" x 8' 4"
Bedroom 2	3.00 x 2.55	9' 10" x 8' 4"
Bedroom 3	2.81 x 2.10	9' 3" x 6' 11"

### The Magnolia | X327 01 PJLITT |

This floorplan has been produced for illustrative purposes only. Room sizes shown are between arrow points as indicated on plan. The dimensions have tolerances of + or -50mm and should not be used other than for general guidance. If specific dimensions are required, enquiries should be made to the sales consultant.

\* Windows apply to selected plots only. Please see sales consultant for further details.

ovn	oven	ffzs	fridge freezer space
h	hob	ldr	larder
ds	dishwasher space	cup'd	cupboard
ws	washing machine space	< >	measuring points

Please refer to the sales consultant for specific plot details as the illustrations shown are computer generated impressions of how the property may look so are indicative only. External details or finishes may vary on individual plots and homes may be built in either detached or attached styles depending on the development layout. Exact specifications, window styles and whether a property is left or right handed may differ from plot to plot.

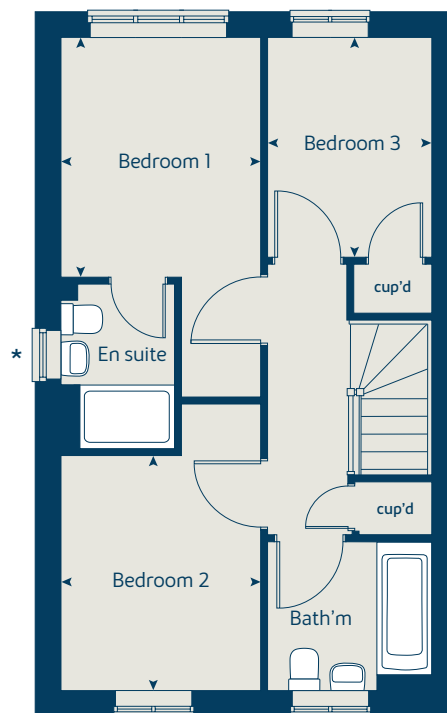
The floorplans shown are not to scale. Measurements are based on the original drawings. Slight variations may occur during construction.

Produced by the Vistry Group Design Studio.

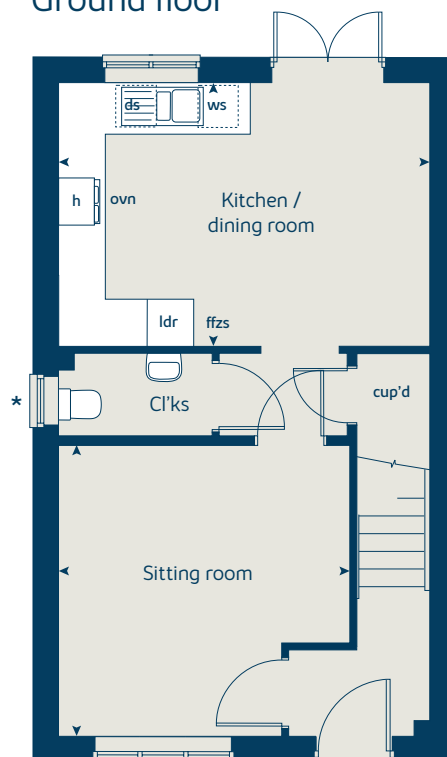
When you have finished with this leaflet please recycle it.

PJLITT DS01373 / 08.22

### First floor



### Ground floor





# The Chestnut

4 bedroom home

[bovishomes.co.uk](http://bovishomes.co.uk)

**Bovis  
Homes** 

# The Chestnut

## 4 bedroom home

Ground floor	metres	feet / inches
Kitchen	4.05 x 3.05	13' 3" x 10' 0"
Dining / family area	4.60 x 2.83	15' 1" x 9' 3"
Sitting room	4.98 x 3.40	16' 4" x 11' 2"
Study	3.40 x 1.81	11' 2" x 5' 11"

### First floor

Bedroom 1	4.48 x 3.25	14' 8" x 10' 8"
Bedroom 2	3.44 x 3.37	11' 3" x 11' 1"
Bedroom 3	3.42 x 2.31	11' 3" x 7' 7"
Bedroom 4	3.21 x 2.35	10' 6" x 7' 9"

### The Chestnut | X413 01 PJJLTT |

This floorplan has been produced for illustrative purposes only. Room sizes shown are between arrow points as indicated on plan. The dimensions have tolerances of + or -50mm and should not be used other than for general guidance. If specific dimensions are required, enquiries should be made to the sales consultant.

\* Windows apply to selected plots only. Please see sales consultant for further details.

ovn	oven	ffzr	fridge freezer
h	hob	w	wardrobe
ds	dishwasher space	cup'd	cupboard
ws	washing machine space	< >	measuring points
ldr	larder		

Please refer to the sales consultant for specific plot details as the illustrations shown are computer generated impressions of how the property may look so are indicative only. External details or finishes may vary on individual plots and homes may be built in either detached or attached styles depending on the development layout. Exact specifications, window styles and whether a property is left or right handed may differ from plot to plot.

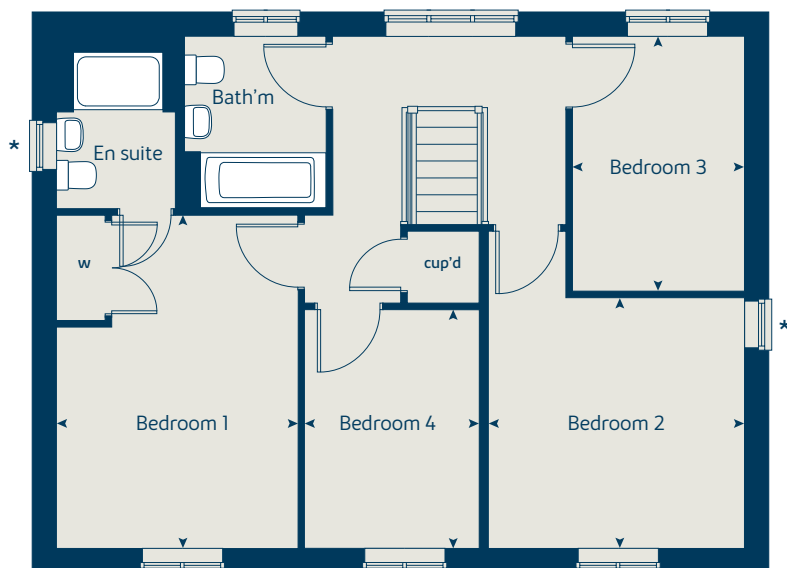
The floorplans shown are not to scale. Measurements are based on the original drawings. Slight variations may occur during construction.

Produced by the Vistry Group Design Studio.

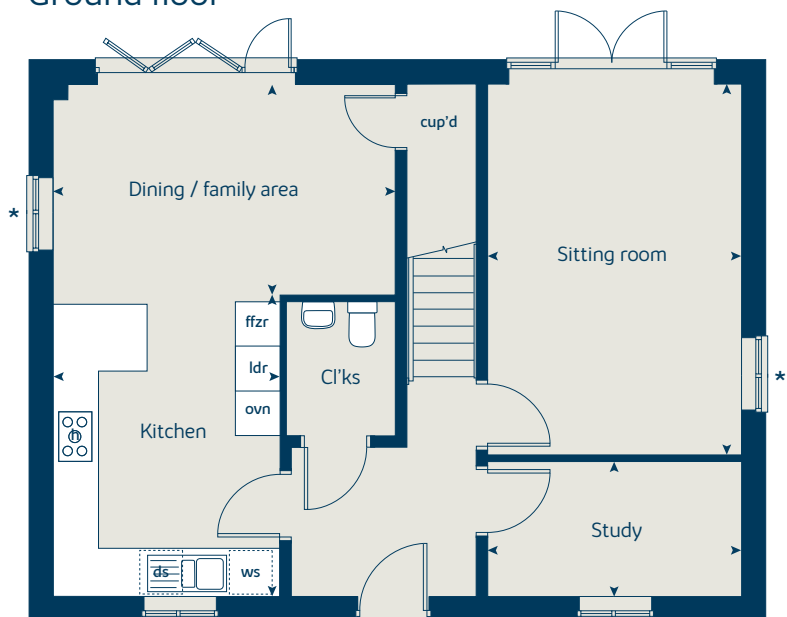
When you have finished with this leaflet please recycle it.

PJJLTT DS01373 / 08.22

### First floor



### Ground floor





# The Chestnut

4 bedroom home

[bovishomes.co.uk](http://bovishomes.co.uk)

**Bovis  
Homes** 

# The Chestnut

## 4 bedroom home

Ground floor	metres	feet / inches
Kitchen	4.05 x 3.05	13' 3" x 10' 0"
Dining / family area	4.60 x 2.83	15' 1" x 9' 3"
Sitting room	4.98 x 3.40	16' 4" x 11' 2"
Study	3.40 x 1.81	11' 2" x 5' 11"

### First floor

Bedroom 1	4.48 x 3.25	14' 8" x 10' 8"
Bedroom 2	3.44 x 3.37	11' 3" x 11' 1"
Bedroom 3	3.42 x 2.31	11' 3" x 7' 7"
Bedroom 4	3.21 x 2.35	10' 6" x 7' 9"

### The Chestnut | X413 01 PJJLTT |

This floorplan has been produced for illustrative purposes only. Room sizes shown are between arrow points as indicated on plan. The dimensions have tolerances of + or -50mm and should not be used other than for general guidance. If specific dimensions are required, enquiries should be made to the sales consultant.

\* Windows apply to selected plots only. Please see sales consultant for further details.

ovn	oven	ffzr	fridge freezer
h	hob	w	wardrobe
ds	dishwasher space	cup'd	cupboard
ws	washing machine space	<>	measuring points
ldr	larder		

Please refer to the sales consultant for specific plot details as the illustrations shown are computer generated impressions of how the property may look so are indicative only. External details or finishes may vary on individual plots and homes may be built in either detached or attached styles depending on the development layout. Exact specifications, window styles and whether a property is left or right handed may differ from plot to plot.

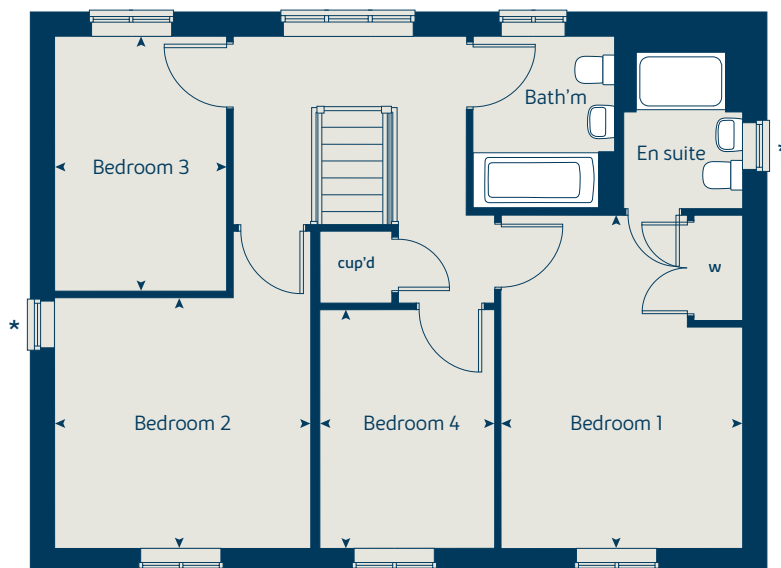
The floorplans shown are not to scale. Measurements are based on the original drawings. Slight variations may occur during construction.

Produced by the Vistry Group Design Studio.

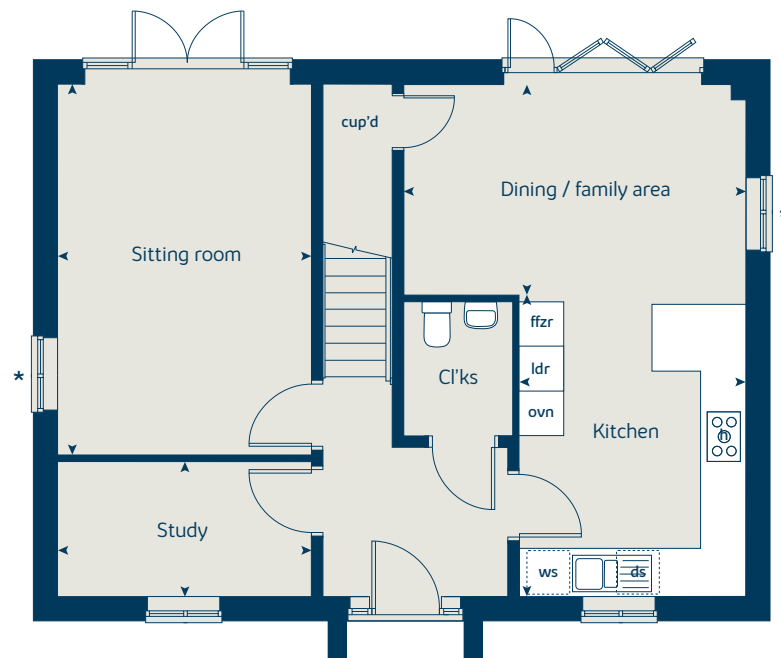
When you have finished with this leaflet please recycle it.

PJJLTT DS01373 / 08.22

### First floor



### Ground floor





# The Juniper

4 bedroom home

[bovishomes.co.uk](http://bovishomes.co.uk)

**Bovis  
Homes** 

# The Juniper

## 4 bedroom home

Ground floor	metres	feet / inches
Kitchen / dining / family area	7.21 x 3.52	23' 8" x 11' 7"
Sitting room	4.55 x 3.04	14' 11" x 10' 0"
Study	2.34 x 1.85	7' 8" x 6' 1"

### First floor

Bedroom 1	3.47 x 3.41	11' 5" x 11' 2"
Bedroom 2	3.65 x 2.84	12' 0" x 9' 4"
Bedroom 3	3.52 x 2.38	11' 7" x 7' 10"
Bedroom 4	3.61 x 2.38	11' 10" x 7' 10"

ovn	oven	w	wardrobe
h	hob	ldr	larder
ds	dishwasher space	cup'd	cupboard
ws	washing machine space	◀ ▶	measuring points
ffzr	fridge freezer		

### The Juniper | X412 02 155-PJLITT |

The floorplan has been produced for illustrative purposes only. Room sizes shown are between arrow points as indicated on plan. The dimensions have tolerances of + or -50mm and should not be used other than for general guidance. If specific dimensions are required, enquiries should be made to the sales consultant. The floor plans shown are not to scale. Measurements are based on the original drawings. Slight variations may occur during construction.

The illustrations shown are computer generated impressions of how the property may look and are indicative only. External details or finishes may vary on individual plots and homes may be built in either detached or attached styles depending on the development layout. Exact specifications, window styles and whether a property is left or right handed may differ from plot to plot. Please speak to our sales consultant for specific plot details.

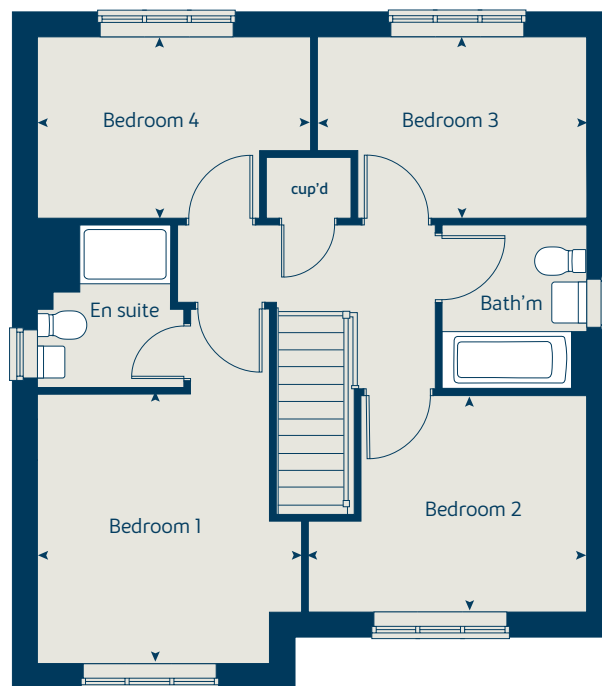
Wardrobes as standard specification if building to NDSS.

Produced by the Vistry Group Design Studio.

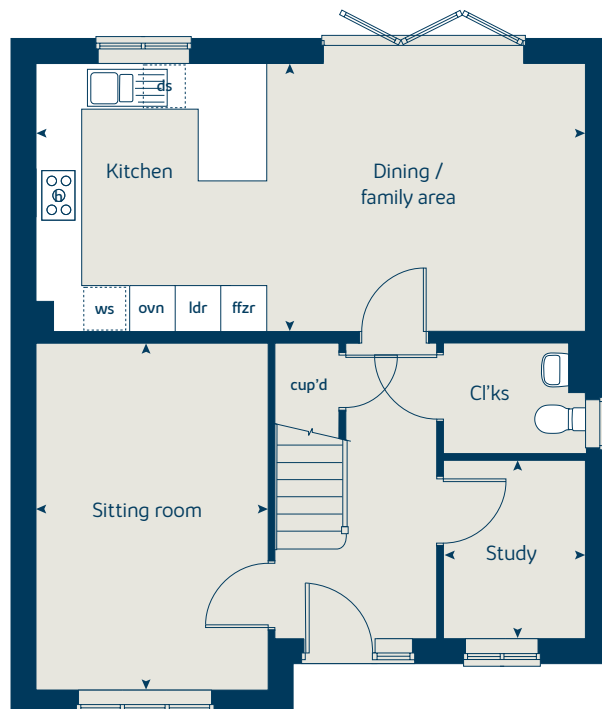
When you have finished with this leaflet please recycle it.

155-PJLITT DS09675 / 04.24

## First floor



## Ground floor





# The Aspen

4 bedroom home

[bovishomes.co.uk](http://bovishomes.co.uk)

**Bovis  
Homes** 

# The Aspen

## 4 bedroom home

Ground floor	metres	feet / inches
Kitchen / dining area	7.77 x 3.37	25' 6" x 11' 1"
Sitting room	5.04 x 3.39	16' 6" x 11' 1"
Study	2.02 x 2.01	6' 8" x 6' 7"

### First floor

Bedroom 1	4.52 x 3.81	14' 10" x 12' 6"
Bedroom 2	3.87 x 3.11	12' 8" x 10' 2"
Bedroom 3	4.07 x 2.42	13' 4" x 7' 11"
Bedroom 4	3.61 x 2.45	11' 10" x 8' 1"

### The Aspen | X414 (IF) 01 PJLITT |

This floorplan has been produced for illustrative purposes only. Room sizes shown are between arrow points as indicated on plan. The dimensions have tolerances of + or -50mm and should not be used other than for general guidance. If specific dimensions are required, enquiries should be made to the sales consultant.

\* Windows apply to selected plots only. Please see sales consultant for further details.

ovn	oven	ldr	larder
h	hob	w	wardrobe
ds	dishwasher space	cup'd	cupboard
ws	washing machine space	< >	measuring points
ffzr	fridge freezer		

Please refer to the sales consultant for specific plot details as the illustrations shown are computer generated impressions of how the property may look so are indicative only. External details or finishes may vary on individual plots and homes may be built in either detached or attached styles depending on the development layout. Exact specifications, window styles and whether a property is left or right handed may differ from plot to plot.

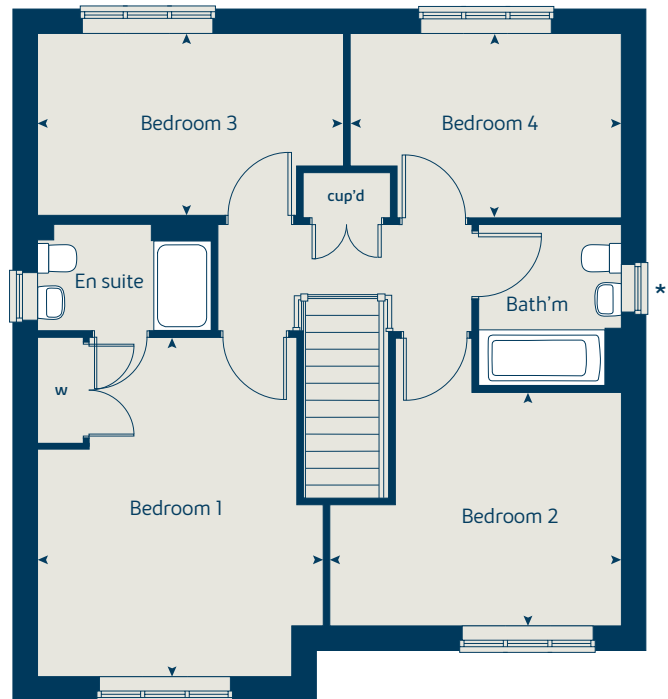
The floorplans shown are not to scale. Measurements are based on the original drawings. Slight variations may occur during construction.

Produced by the Vistry Group Design Studio.

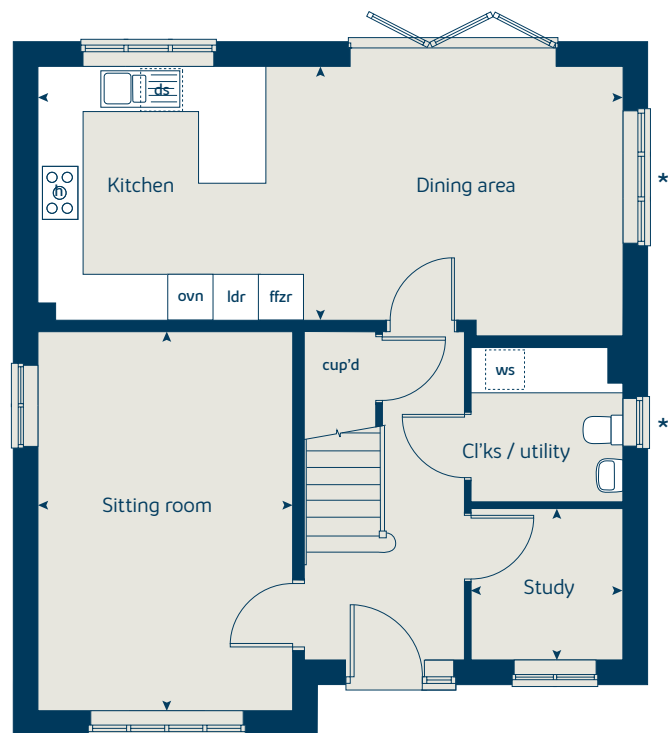
When you have finished with this leaflet please recycle it.

PJLITT DS01373 / 08.22

## First floor



## Ground floor





# The Maple

4 bedroom home

[bovishomes.co.uk](http://bovishomes.co.uk)

**Bovis  
Homes** 

# The Maple

4 bedroom home

Ground floor	metres	feet / inches
Kitchen	3.55 x 3.50	11' 6" x 11' 5"
Family / dining area	7.29 x 3.29	23' 9" x 10' 8"
Sitting room	4.50 x 3.50	14' 9" x 11' 5"
Study	2.50 x 2.29	8' 2" x 7' 6"

## First floor

Bedroom 1	3.60 x 3.50	11' 8" x 11' 4"
Bedroom 2	3.68 x 3.50	12' 0" x 11' 4"
Bedroom 3	4.17 x 2.89	13' 6" x 9' 5"
Bedroom 4	2.95 x 2.92	9' 7" x 9' 5"

ovn	oven	w	wardrobe
h	hob	cyl	hot water cylinder
ds	dishwasher space	cup'd	cupboard
ws	washing machine space	< >	measuring points
ffzr	fridge freezer		

## The Maple | X416 02 Quantum Fields |

The floorplan has been produced for illustrative purposes only. Room sizes shown are between arrow points as indicated on plan. The dimensions have tolerances of + or -50mm and should not be used other than for general guidance. If specific dimensions are required, enquiries should be made to the sales consultant. The floor plans shown are not to scale. Measurements are based on the original drawings. Slight variations may occur during construction.

The illustrations shown are computer generated impressions of how the property may look and are indicative only. External details or finishes may vary on individual plots and homes may be built in either detached or attached styles depending on the development layout. Exact specifications, window styles and whether a property is left or right handed may differ from plot to plot. Please speak to our sales consultant for specific plot details.

Produced by the Vistry Group Design Studio.

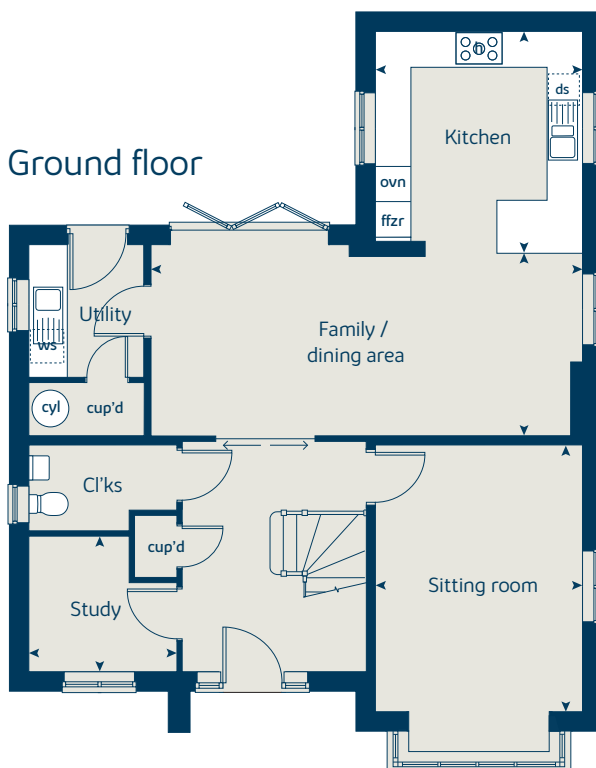
When you have finished with this leaflet please recycle it.

155-PJLITT DS08996 / 03.24

First floor



Ground floor





# Quantum Fields

Littleport

Specification

[bovishomes.co.uk](http://bovishomes.co.uk)

**Bovis**  
**Homes** 

# Quantum Fields

## Littleport

Use this guide to see what features are included in your new home. Your sales consultant will be happy to discuss the **Select** range of extras available.

Applicable from 2026

### Kitchen

Choice of Standard fitted kitchen (doors and worktops)*
Stainless steel sink and drainer (single bowl) with chrome mixer tap
Stainless steel sink and drainer (single and a half bowl) with chrome mixer tap
Stainless steel sink and drainer (single bowl) with chrome mixer tap in utility
Kitchen hob (60cm) with built-in single under-oven, with stainless steel splashback and curved glass chimney hood
Kitchen hob (75 cm) with built-in double high level oven, with glass splashback and chimney hood
Pendant light fitting
Pre-wired for under unit lighting option
Fridge / freezer space
Integrated (Indesit) 50 / 50 fridge freezer
Space for integrated dishwasher with plumbing and electrics (with removable base unit)
Space for washing machine with plumbing and electrics in utility
Space for washing machine with plumbing and electrics in kitchen

**3 bedroom**  
**The Spruce**  
**The Hazel**  
**The Cypress**  
**The Beech**  
**The Magnolia**

**4 bedroom**  
**The Chestnut**  
**The Aspen**  
**The Juniper**  
**The Maple**

■	■	■	■	■
■	■	■	■	■
■		■		
■	■	■	■	■
■	■	■	■	■
■	■	■	■	■
■	■	■	■	■
■	■	■	■	■
■	■	■	■	■
■		■		
	■		■	■

■	■	■	■
■	■	■	■
■			
■	■	■	■
■	■	■	■
■	■	■	■
■	■	■	■
■	■	■	■
■	■	■	■
■	■	■	■

### Bathrooms and en suite(s)

Ideal Standard contemporary white sanitary ware
Ideal Standard WC with Aquablade technology, soft close seat and cover
Low profile shower tray with glass enclosure
Handheld hair wash attachment to bath
Shower over the bath with glazed screen
Choice of Standard Porcelanosa wall tiling (splashback and full-height over bath)*
Choice of Standard Porcelanosa wall tiling (splashback, half-height over bath and full-height to shower cubicle)*
Chrome bezel LED bulkhead to bathroom and en suite(s)
Chrome towel warmer in bathroom and en suite(s)
Water waste heat recovery system

■	■	■	■	■
■	■	■	■	■
■	■	■		■
■	■	■	■	■
■	■	■	■	■
■	■	■	■	■
■	■	■	■	■

■	■	■	■
■	■	■	■
■	■	■	■
■	■	■	■
■	■	■	■
■	■	■	■
■	■	■	■

### Doors and Windows

Front door with multi-point security locking system and security chain
Chrome front door numbers

■	■	■	■	■
■	■	■	■	■

■	■	■	■
■	■	■	■



## So much choice...

Part of the excitement of buying a new home is the thrill of being the first person to live in the property and having a brand new contemporary kitchen and modern bathroom. Our premium brand partners ensure that all of our fixtures and fittings comply with the latest Government building regulations and only branded appliances are installed in your new home.

Once you know what specification comes included, you'll have a choice from our specially selected tiles for your kitchen and bathrooms, as well as kitchen worktops and cupboard doors. You can then use the Bovis Homes **Select** brochure to add the finishing touches to your home to make it extra special for you!

From personalising your bathrooms with stunning ceramics, or adding smooth sliding wardrobes to your master bedroom, there are a wide range of additional options and upgrades available.

The availability of items is subject to the stage of build, and can vary by development and house type. Our sales consultants will be happy to provide guidance.



The specification shown in this leaflet is correct at the time of going to press. Bovis Homes is continually reviewing and updating the specification on all housetypes and therefore reserves the right to change specification details. Photographs depict a typical Bovis Homes interior and may include optional upgrades. For full details regarding current specification and finishes, for the plots you are interested in, please refer to our sales consultant.

Produced by the Vistry Group Design Studio.

When you have finished with this leaflet please recycle it

PJLITT DS16078 / 04.26

**Bovis  
Homes** 