

Orton Copse Development update



Issue 1 | Spring 2024



Keeping you updated

We wanted to provide you with an update on the development and what you can expect from us over the coming months.

Overview

Summary of what's being built:

- 15 Bovis Open Market homes being sold by Bovis Homes
- 19 Bovis Shared Ownership
- 65 Pre-sold homes
- Attenuation pond

Site activity

- 79 homes are now roofed with a further 12 to go up the week after Easter.
- The apartments are 1st fixed with all internal walls, cables and pipes installed.
- The site has averaged over 50 people a day with a large contingent of local workers bringing valuable employment to the area.
- Completion is forecast for the end of 2024, but you will see big changes before that in the summer as the apartments are completed.

Pond

We will begin digging the pond in April 2024 which will be adjacent to the cycle path. We will endeavour to keep the roads in the area clear of debris from the excavation.

Timeline

- The first completion occurred in December 2023.
- Sales & Marketing Centre is now open at the development on Morpeth Close, Peterborough. Please check the website for the latest opening times.
- Update on roads and footways – Final surfacing of footpaths will begin over Spring/Summer 2024, once the scaffolding comes down in the centre of site.
- Utilities - All water, gas and electric mains are installed except for a small private driveway to the North of the development. The old gas governor has been replaced with a new enclosure.
- Expected site completion is end of 2024, with surrounding roads and footpaths programmed for early 2025.

Managing Agent

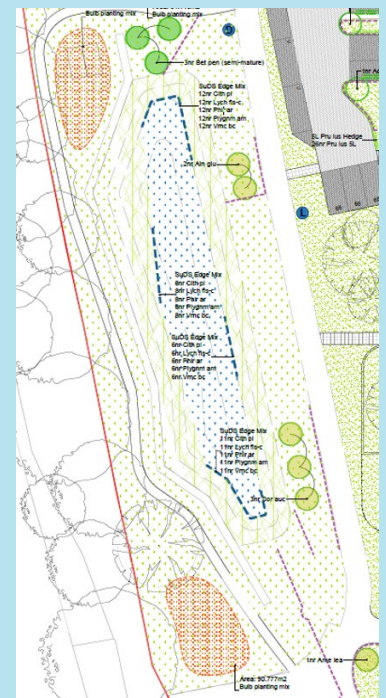
- Residential Management Group (RMG)
- Anticipated handover Spring 2025
- More information can be found on the Orton Copse website
- 0345 002 4444
- www.rmgltd.co.uk
- customerservice@rmguk.com

Ecology

Planting for the pond has been selected to attract and retain wildlife. 60+ new trees planted.

Before we commenced on site, Homes England built a dedicated bat barn (which includes 6 swift nests), and 4 bat box poles. 10 bat tubes are being integrated into selected homes (6 in already). We are also installing hedgehog highways to fence lines.

Pollinator friendly seed packets are being provided for every new homeowner to sow in their gardens, and fresh bulbs have been planted in the land next to the cycle path.



Services

These providers are flexible, and new residents are not tied to them exclusively:

Gas & Electric: British Gas - 0330 100 0056

Telephone/Broadband: BT Openreach – 0800 023 2023

These providers are exclusive:

Water: Anglian Water - 03457 919 155

Development layout plan



How will the development benefit the local community?

Orton Copse will also support the local community by contributing over **£83,317** towards:

- Oakleigh Drive Play Area.
- Oakleigh Drive maintenance for 5 Years.
- Belsize Avenue Allotments.
- Allotment maintenance for 5 years.
- The Peterborough Community Infrastructure Levy.

We will also be providing:

- 1-month free Megarider bus pass per household.
- Travel packs to include local transport and amenities.

How we're working with your community:

Additional Neighbourhood Watch signage, supporting local NHS Occupational Therapists with training in our show home, bulb planting in the area, school site tours, and supporting local adult care provider, Augusta Care, with an event for their service users.

Schools we're working with: Thomas Deacon Academy, Nene Park Academy.

Please be aware that the dates and information provided are correct at time of print and are dependent on a number of factors, including weather, so are subject to change.

Thank you for your patience while the construction work is taking place. We try to keep disruption to a minimum but appreciate it can be noisy and dirty at times so do contact us if you have any questions, or if you'd like to provide any feedback, by emailing:

Orton.Copse@BovisHomes.co.uk

