

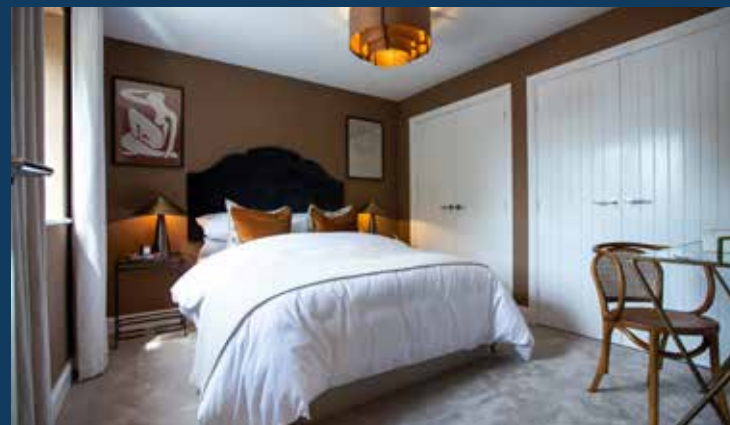
So much choice...

Part of the excitement of buying a new home is the thrill of being the first person to live in the property and having a brand new contemporary kitchen and modern bathroom. Our premium brand partners ensure that all of our fixtures and fittings comply with the latest Government building regulations and only branded appliances are installed in your new home.

Once you know what specification comes included, you'll have a choice from our specially selected tiles for your kitchen and bathrooms, as well as kitchen worktops and cupboard doors. You can then use the Bovis Homes Select brochure to add the finishing touches to your home to make it extra special for you!

From personalising your bathrooms with stunning ceramics, or adding smooth sliding wardrobes to your master bedroom, there are a wide range of additional options and upgrades available.

The availability of items is subject to the stage of build, and can vary by development and house type. Our sales advisors will be happy to provide guidance.



**CONSUMER
CODE FOR
HOME BUILDERS**

www.consumercode.co.uk

When you have finished with this brochure please recycle it.

The specification shown is correct at the time of production. Bovis Homes is continually reviewing and updating the specification on all house types and therefore reserves the right to change specification details. Photographs depict typical Bovis Homes interiors and may include optional upgrades. For full details regarding the current specification and finishes, please speak to our sales consultant.

Bovis Homes Limited, Cotswolds region
Cleeve Hall, Cheltenham Road, Bishop's Cleeve, Cheltenham, Gloucestershire GL52 8GD.
Telephone: 01242 388 500

Produced by House Marketing

**Bovis
Homes**

Woodlands

Barrow Gurney, Bristol

Specification

bovishomes.co.uk

**Bovis
Homes**

Woodlands

Barrow Gurney, Bristol

Use this guide to see what features are included in your new home. Your sales consultant will be happy to discuss the **Select** range of extras available.



	3 bedroom The Cypress	4 bedroom The Alder The Ashton The Aspen The Bourton The Chestnut The Maple	5 bedroom The Lime The Oak The Pine The Yew
Kitchen			
Choice of Standard Symphony fitted kitchen (doors and worktops)	■	■ ■ ■ ■ ■ ■	■ ■ ■ ■ ■ ■
Choice of Premium Symphony fitted kitchen (doors and worktops)			■ ■ ■ ■ ■ ■
Stainless steel sink and drainer (single and a half bowl) with chrome mixer tap	■	■ ■ ■ ■ ■ ■	■ ■ ■ ■ ■ ■
Stainless steel sink and drainer (single bowl) with chrome mixer tap in utility		■ ■ ■ ■ ■ ■	■ ■ ■ ■ ■ ■
Bosch Induction Hob (80cm), Bosch stainless steel double built-in high-level oven. Energy Rating: A. 90cm chimney hood. (Cypress house type to feature Bosch stainless steel built under oven instead of double built-in-high-level oven)	■	■ ■ ■ ■ ■ ■	■ ■ ■ ■ ■ ■
Bosch built in microwave with grill (subject to kitchen design)		■ ■ ■ ■ ■ ■	■ ■ ■ ■ ■ ■
Full 30 min fire rated recessed Downlights in white finish (Pine and Oak house types Utility to also receive Downlights)	■	■ ■ ■ ■ ■ ■	■ ■ ■ ■ ■ ■
LED under cabinet strip lighting installed as standard	■	■ ■ ■ ■ ■ ■	■ ■ ■ ■ ■ ■
Fridge / freezer space	■		
Separate Bosch fridge & Bosch freezer (Maple & Cypress house types to feature single Bosch fridge freezer)		■ ■ ■ ■ ■ ■	■ ■ ■ ■ ■ ■
Bosch integrated dishwasher, A+ energy rating	■	■ ■ ■ ■ ■ ■	■ ■ ■ ■ ■ ■
Space for freestanding tumble dryer		■ ■ ■ ■ ■ ■	■ ■ ■ ■ ■ ■
Space for washing machine with plumbing and electrics in kitchen			■ ■ ■ ■ ■ ■
Space for washing machine with plumbing and electrics in utility		■ ■ ■ ■ ■ ■	■ ■ ■ ■ ■ ■
Bathrooms and en suite(s)			
Ideal standard contemporary white Connect air sanitary ware suite	■	■ ■ ■ ■ ■ ■	■ ■ ■ ■ ■ ■
Ideal standard close coupled WC to cloakroom	■	■ ■ ■ ■ ■ ■	■ ■ ■ ■ ■ ■
Synergy Angle shower bath screen with clear glass and silver finish wall profile	■	■ ■ ■ ■ ■ ■	■ ■ ■ ■ ■ ■
Ecotherm thermostatic shower above bath complete with hose retainer	■	■ ■ ■ ■ ■ ■	■ ■ ■ ■ ■ ■
Low profile shower tray with glass enclosure	■	■ ■ ■ ■ ■ ■	■ ■ ■ ■ ■ ■
Handheld hair wash attachment for en-suite(s)	■	■ ■ ■ ■ ■ ■	■ ■ ■ ■ ■ ■
Choice of standard Porcelanosa wall tiling (splashback, half-height over bath, and full height to shower cubicle if applicable)*	■	■ ■ ■ ■ ■ ■	■ ■ ■ ■ ■ ■
Shaver socket / toothbrush charger to all bathrooms and en-suites	■	■ ■ ■ ■ ■ ■	■ ■ ■ ■ ■ ■
Full 30 min fire rated recessed Downlights in white finish	■	■ ■ ■ ■ ■ ■	■ ■ ■ ■ ■ ■
Chrome towel warmer in bathroom and en-suite(s)	■	■ ■ ■ ■ ■ ■	■ ■ ■ ■ ■ ■
Bedrooms			
Built-in wardrobe(s) to bedroom 1. White cottage doors to match internal doors. White painted single shelf	■	■ ■ ■ ■ ■ ■	■ ■ ■ ■ ■ ■

	3 bedroom The Cypress	4 bedroom The Alder The Ashton The Aspen The Bourton The Chestnut The Maple	5 bedroom The Lime The Oak The Pine The Yew
Doors and Windows			
Front door with multi-point security locking system and security chain	■	■ ■ ■ ■ ■ ■	■ ■ ■ ■ ■ ■
Clear Acrylic front door numerals with Reverse Printed Graphics, printed to grey and backed out in an etched vinyl	■	■ ■ ■ ■ ■ ■	■ ■ ■ ■ ■ ■
PVCu double glazing to windows	■	■ ■ ■ ■ ■ ■	■ ■ ■ ■ ■ ■
Double glazed PVCu French doors	■		■ ■ ■ ■ ■ ■
Powder coated aluminium double glazed bi fold doors		■ ■ ■ ■ ■ ■	■ ■ ■ ■ ■ ■
Internal doors to be Cottage style pre-primed with Brass satin finish handles	■	■ ■ ■ ■ ■ ■	■ ■ ■ ■ ■ ■
Paving outside French / bi-fold door and path to garage personnel door (where applicable)	■	■ ■ ■ ■ ■ ■	■ ■ ■ ■ ■ ■
General			
White painted walls and smooth white ceilings	■	■ ■ ■ ■ ■ ■	■ ■ ■ ■ ■ ■
Combined usb / double sockets in kitchen, lounge and bedroom 1	■	■ ■ ■ ■ ■ ■	■ ■ ■ ■ ■ ■
Multi-media point in sitting room	■	■ ■ ■ ■ ■ ■	■ ■ ■ ■ ■ ■
TV Point to bedroom 1 and family room (where applicable)	■	■ ■ ■ ■ ■ ■	■ ■ ■ ■ ■ ■
Master telephone socket (plus to study where shown)	■	■ ■ ■ ■ ■ ■	■ ■ ■ ■ ■ ■
Gas central heating with wall mounted combi-boiler, programme selector and room thermostat(s)	■	■ ■ ■ ■ ■ ■	■ ■ ■ ■ ■ ■
Gas central heating with wall mounted boiler and separate hot water cylinder, programme selector and room thermostat(s)		■ ■ ■ ■ ■ ■	■ ■ ■ ■ ■ ■
Thermostatic valves to all radiators (with the exception of rooms with separate thermostat control)	■	■ ■ ■ ■ ■ ■	■ ■ ■ ■ ■ ■
Fitted external tap	■	■ ■ ■ ■ ■ ■	■ ■ ■ ■ ■ ■
External light fitted to front porch and wiring for external light to rear door	■	■ ■ ■ ■ ■ ■	■ ■ ■ ■ ■ ■
Mains Operated Doorbell (push), Satin Chrome finish	■	■ ■ ■ ■ ■ ■	■ ■ ■ ■ ■ ■
Mains wired smoke detectors with battery back up provided for each floor	■	■ ■ ■ ■ ■ ■	■ ■ ■ ■ ■ ■
Battery powered Carbon Monoxide detector next to boiler	■	■ ■ ■ ■ ■ ■	■ ■ ■ ■ ■ ■
Power and lighting to 'on plot' garage (where applicable)	■	■ ■ ■ ■ ■ ■	■ ■ ■ ■ ■ ■
Enclosed fenced rear garden, and garden gate (where applicable)	■	■ ■ ■ ■ ■ ■	■ ■ ■ ■ ■ ■
Landscaped front gardens. Fully turfed rear garden	■	■ ■ ■ ■ ■ ■	■ ■ ■ ■ ■ ■
NHBC Buildmark cover	■	■ ■ ■ ■ ■ ■	■ ■ ■ ■ ■ ■
First two years' customer service support from Bovis Homes	■	■ ■ ■ ■ ■ ■	■ ■ ■ ■ ■ ■

■ fitted as standard - included in the property
 * subject to stage of construction

Please note that in some instances, should the manufacturer revise their model numbers, Bovis Homes will provide an equivalent model to the above specified.