

Windrush Place apartments

Witney



Windrush Place apartments

Witney



2 bedroom homes

- Plots 16-25
- Plots 26-31
- Plots 32-39

Pre-sold homes

- Plots 1-15

- ss substation
- cs cycle store
- bs bin store
- v visitor space
- ▲ electric vehicle charger
- * ground floor retail units

This plan has been produced for home identification purposes only and is not to scale. The development layout, landscaping and tenure of all dwellings may be subject to change throughout the course of the development. Finishes and materials may vary from those shown on the plan. Please check the details of your chosen plot and house type with the sales consultant. Development layout plan correct at time of production.

Produced by the Vistry Group Design Studio.
DS13059 / 02.25



Windrush Place Apartments

Windrush Place

2 bedroom apartments

bovishomes.co.uk

**Bovis
Homes** 

Windrush Place apartments

2 bedroom apartments

First floor



Second floor



● Apartments 16, 20, 21 and 25

	metres	feet / inches
Kitchen / sitting / dining area	7.65 x 4.26	25' 1" x 14' 0"
Bedroom 1	3.72 x 3.10	12' 3" x 10' 2"
Bedroom 2	3.18 x 2.51	10' 5" x 8' 3"

● Apartments 18 and 23

	metres	feet / inches
Kitchen / sitting / dining area	7.93 x 3.24	26' 0" x 10' 7"
Bedroom 1	4.30 x 2.75	14' 1" x 9' 0"
Bedroom 2	4.31 x 2.67	14' 1" x 8' 9"

● Apartments 17, 19, 22 and 24

	metres	feet / inches
Kitchen / sitting / dining area	6.64 x 4.13	21' 9" x 13' 6"
Bedroom 1	3.40 x 3.40	14' 2" x 14' 2"
Bedroom 2	3.40 x 2.23	11' 2" x 7' 4"

ovn	oven	ds	dishwasher space
h	hob	bc	boiler cupboard
ws	washing machine space	cup'd	cupboard
ffzs	fridge freezer space	< >	measuring points

Windrush Place | Block B Witney |

The floorplan has been produced for illustrative purposes only. Room sizes shown are between arrow points as indicated on plan. The dimensions have tolerances of + or -50mm and should not be used other than for general guidance. If specific dimensions are required, enquiries should be made to the sales consultant. The floor plans shown are not to scale. Measurements are based on the original drawings. Slight variations may occur during construction.

The illustrations shown are computer generated impressions of how the property may look and are indicative only. External details or finishes may vary on individual plots and homes may be built in either detached or attached styles depending on the development layout. Exact specifications, window styles and whether a property is left or right handed may differ from plot to plot. Please speak to our sales consultant for specific plot details.

Please note, retail units to ground floor. Please speak to our sales consultant for further details.

Windrush Place Apartments

2 bedroom apartments

Windrush Place Apartments | Windrush Place |

The floorplan has been produced for illustrative purposes only. Room sizes shown are between arrow points as indicated on plan. The dimensions have tolerances of + or -50mm and should not be used other than for general guidance. If specific dimensions are required, enquiries should be made to the sales consultant. The floor plans shown are not to scale. Measurements are based on the original drawings. Slight variations may occur during construction.

The illustrations shown are computer generated impressions of how the property may look and are indicative only. External details or finishes may vary on individual plots and homes may be built in either detached or attached styles depending on the development layout. Exact specifications, window styles and whether a property is left or right handed may differ from plot to plot. Please speak to our sales consultant for specific plot details.

ovn	oven	ws	washing machine space
h	hob	ffzs	fridge freezer space
ds	dishwasher space	cup'd	cupboard
sds	slimline dishwasher space	< >	measuring points



First floor
Plots 26, 27 and 28



Second floor
Plots 29, 30 and 31

Apartments 26 and 29		
	metres	feet / inches
Kitchen / sitting / dining area	7.64 x 3.12	25' 1" x 10' 3"
Bedroom 1	3.72 x 3.10	12' 3" x 10' 2"
Bedroom 2	3.13 x 2.58	10' 4" x 8' 6"

Apartments 27 and 30		
	metres	feet / inches
Kitchen / sitting / dining area	6.62 x 3.18	21' 9" x 10' 5"
Bedroom 1	3.42 x 3.40	11' 3" x 11' 2"
Bedroom 2	3.42 x 2.23	11' 3" x 7' 4"

Apartments 28 and 31		
	metres	feet / inches
Kitchen / sitting / dining area	6.18 x 3.86	20' 4" x 12' 8"
Bedroom 1	4.66 x 3.03	15' 4" x 10' 0"
Bedroom 2	4.23 x 2.92	13' 11" x 9' 7"

Windrush Place Apartments

2 bedroom apartments

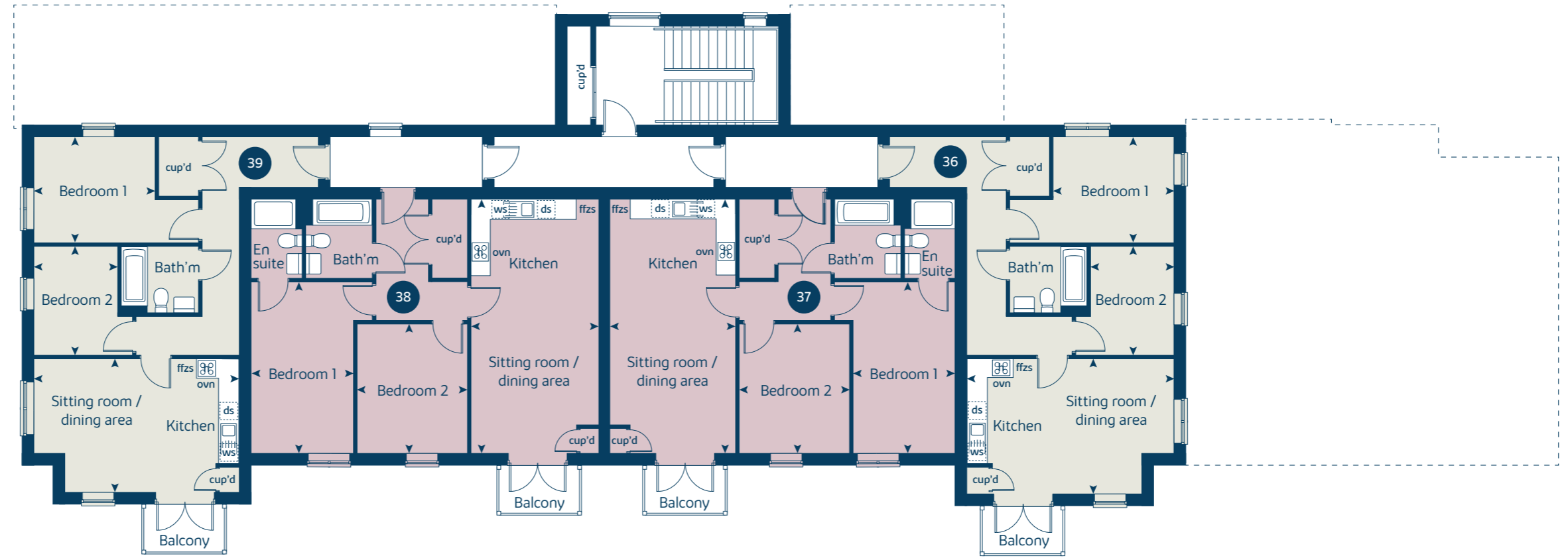
Windrush Place Apartments | Windrush Place |

The floorplan has been produced for illustrative purposes only. Room sizes shown are between arrow points as indicated on plan. The dimensions have tolerances of + or -50mm and should not be used other than for general guidance. If specific dimensions are required, enquiries should be made to the sales consultant. The floor plans shown are not to scale. Measurements are based on the original drawings. Slight variations may occur during construction.

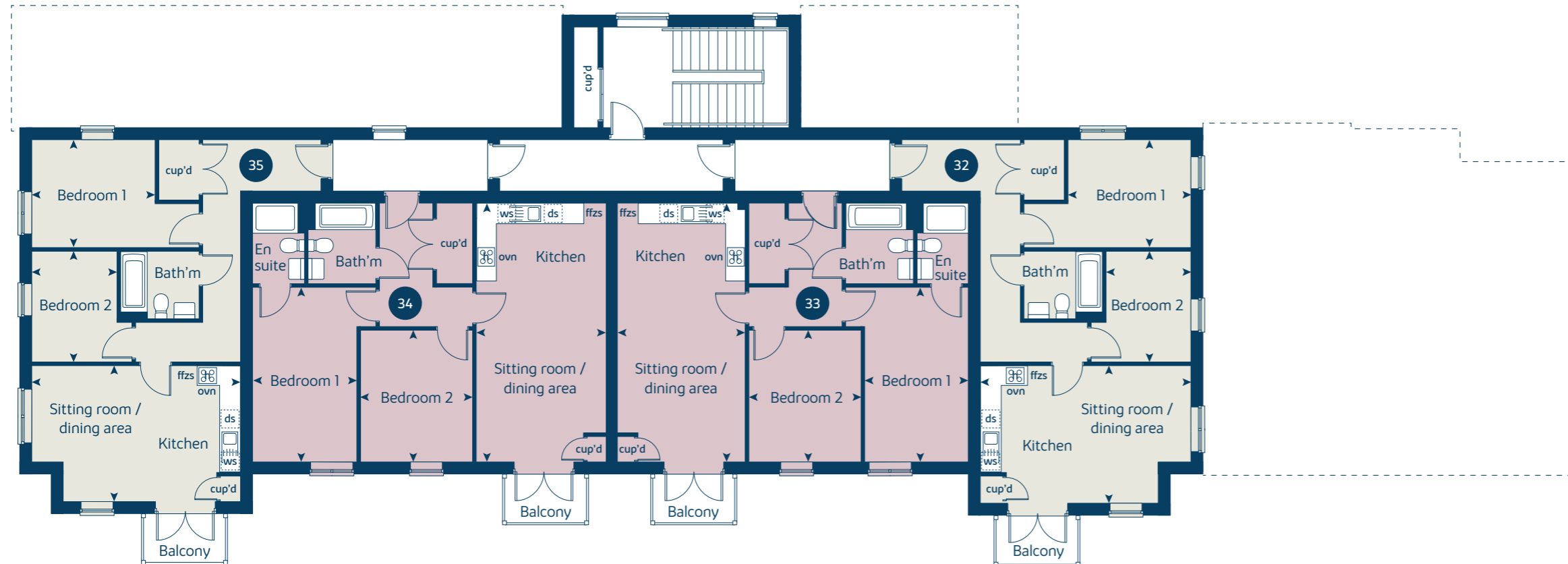
The illustrations shown are computer generated impressions of how the property may look and are indicative only. External details or finishes may vary on individual plots and homes may be built in either detached or attached styles depending on the development layout. Exact specifications, window styles and whether a property is left or right handed may differ from plot to plot. Please speak to our sales consultant for specific plot details.

ovn	oven	ffzs	fridge freezer space
h	hob	cup'd	cupboard
ws	washing machine space	< >	measuring points

Second floor Plots 36, 37, 38 and 39



First floor Plots 32, 33, 34 and 35



	metres	feet / inches
Apartment 32, 35, 36 and 39		
Kitchen / sitting / dining area	5.86 x 3.78	19' 3" x 12' 5"
Bedroom 1	3.42 x 3.05	11' 3" x 10' 0"
Bedroom 2	3.10 x 2.36	17' 9" x 10' 2"
Apartment 33, 34, 37 and 38		
Kitchen / sitting / dining area	7.16 x 3.60	23' 6" x 11' 10"
Bedroom 1	4.86 x 2.87	15' 11" x 9' 5"
Bedroom 2	3.66 x 3.14	12' 0" x 10' 4"

Use this guide to see what features are included in your new home. Your sales consultant will be happy to discuss the **Select** range of extras available.

Kitchen

- Choice of Standard fitted kitchen (doors and worktops)*
- Integrated oven, hob and hood

Bathroom

- Ideal Standard contemporary white Concept Air sanitary ware
- Shower over the bath (full height tiling to length and side of bath)
- Choice of standard Porcelanosa wall tiling (splashback, 450mm over bath, and full-height to shower cubicle)*
- Chrome bezel LED bulkhead to bathroom and en suite(s)

Doors and Windows

- Front door with multi-point security locking system and security chain
- PVCu double glazing to windows
- White painted four panel doors with chrome lever handles

General

- White painted walls and smooth white ceilings
- Combined usb / double sockets in kitchen and bedroom 1
- Multi-media point in sitting room
- TV point to bedroom 1 and family room (where applicable)
- Master telephone socket
- Gas central heating with wall mounted combi-boiler, programme selector and room thermostat(s)
- Thermostatic valves to all radiators (with the exception of rooms with separate thermostat control)
- Mains wired smoke detectors with battery back-up
- NHBC Buildmark cover
- First two years' customer service support from Bovis Homes

* Subject to stage of construction



The specification shown is correct at the time of production. Bovis Homes is continually reviewing and updating the specification on all house/apartment types and therefore reserves the right to change specification details. Photographs depict typical Bovis Homes interiors and may include optional upgrades. For full details regarding the current specification and finishes, please speak to our sales consultant.

Every care has been taken in the preparation of this brochure. The apartment building shown (including its position) is a computer-generated artists impression and should be used for illustrative purposes only. Any surrounding areas, landscaping, roads, footpaths, driveways, walls, fences, trees, bushes, and other details shown in this illustration are merely to create an impression. Please see the development layout plan for details of the apartment location and proximity to other houses. The development layout, landscaping and tenure of all dwellings may be subject to change throughout the course of the development. Please speak to our sales consultant for details of individual apartments.

Produced by the Vistry Group Design Studio.

When you have finished with this leaflet please recycle it.

DS16218 / 04.26