

# The Gateway

Bexhill-on-Sea

CONSUMER  
CODE FOR  
HOME BUILDERS

[www.consumercode.co.uk](http://www.consumercode.co.uk)

Bovis  
Homes 



# The Gateway

Bexhill-on-Sea

A taste of local life

[bovishomes.co.uk](http://bovishomes.co.uk)

**Bovis  
Homes** 





# Welcome to The Gateway



The Gateway enjoys a prime situation in the quintessential seaside town of Bexhill-on-Sea!

Located in the heart of East Sussex and nestled between Hastings and Eastbourne this sleepy town comes to life in the summer months with residents and holiday makers enjoying the various beachfront activities.

So if you're looking for a quality new home, in a sought-after location along the South Coast, your search ends here!

## Getting around

Bexhill is served by the A259 which is the coastal road between Folkestone and Brighton. There are three nearby railway stations; Cooden Beach, Collington and Bexhill, with regular trains running between Ashford and London. The town benefits from several bus routes connecting it to nearby Hastings, Battle, Eastbourne and various central locations. Just over an hour away is the Shuttle, the Channel ferry ports and Gatwick Airport.

## A trip to the shops

The town centre offers a range of high street shops, restaurants, supermarkets and independent retailers. Five minutes away is the Ravenside Retail and Leisure park, comprising of 13 big name stores. To cater for even the most avid shopper there is the Priory Meadow shopping centre in Hastings. For the weekly shop visit the local Tesco.

## Taking time out

Located in this charming town is an abundance of leisure and entertainment facilities, including the De La Warr Pavillion, Bexhill Museum, Leisure Centre, Badminton Academy, Leisure Pool, Outdoor Bowls, Sailing, Sea Angling and Rowing clubs.

For those with a love of the outdoors, why not enjoy a game of tennis in Egerton Park, outdoor bowling clubs and an indoor bowling pavilion. Bexhill also boasts two of the finest golf courses in Sussex at Cooden Beach and Highwoods.

Looking for something for the kids? Then the Polegrove Recreation Ground is home to Bexhill United football club and is used by the towns cricket and rugby teams.

Part of the district of Rother, Bexhill-on-Sea has enjoyed a colourful past, including hosting the first British Motor race in 1902. The town has an eclectic mix of Victorian, Edwardian and Art deco architecture. Highlights include the 1930's De La Warr pavilion and King George V colonnade on the sea front with views across to Eastbourne, Beachy Head and Hastings. The wide promenade and many gift shops, cafés and entertainment venues gives somewhere for all the family to enjoy.

## Education

For young children Bexhill boasts the Glenleigh Park Ducklings Nursery. Parents have the option of several primary schools, all located within a 2 miles radius of The Gateway. They include All Saints C of E Primary School, Charters Ancaster and Chantry Community Primary School. For Secondary education the town is served by Bexhill Academy, Bexhill Sixth Form College and St Richards Catholic College. For further Education there is the University of Brighton.





# The Gateway

Bexhill-on-Sea,  
East Sussex TN40 2LU

01424 574 013

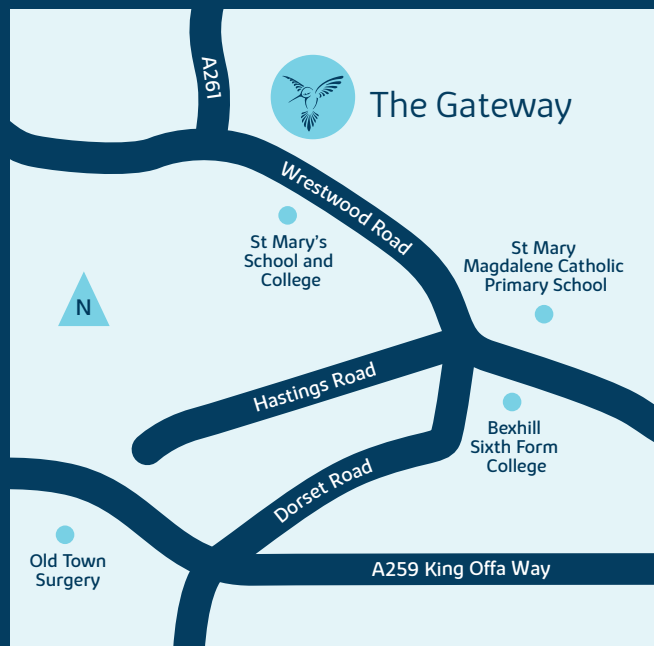
bexhill.sales@bovishomes.co.uk

## From Hastings

- Leave Hastings on the A259 heading west
- At the roundabout, take the 3rd exit onto A2036 Hastings Road
- Follow Hastings Road as it merges into Wrestwood Road
- Follow the signage to The Gateway and the development will be on your right hand side

## From Eastbourne

- Head north-east on A259 Seaside Road towards Cavendish Place
- At Seaside Roundabout, take the 2nd exit onto A259 Seaside and continue to follow A259
- At Harbour roundabout, take the 1st exit and stay on A259 Pevensey Bay Road
- Turn left onto A259 Wallsend Road and continue to follow the road
- At the roundabout take the 3rd exit and stay on A259
- At the roundabout, take the 3rd exit onto A259 Little Common Road
- Slight left onto W Down Road
- Turn right onto Woodsgate Park
- Turn left onto A269 London Road and continue to follow the road
- Turn right onto A2036 Wrestwood Road
- Follow the signage to The Gateway and the development will be on your left hand side



MIX  
Paper from  
responsible sources  
FSC® C014177

When you have finished with this leaflet please recycle it.

Cover photograph of Bexhill. Not view from the development. The streetscene shown above has been produced for illustrative purposes only, please check the details of the homes you are interested in with the sales advisor.

Bovis Homes Limited, South East region  
11 Tower View, Kings Hill, West Malling, Kent ME19 4UY. Telephone: 01732 280 400

Produced by the Bovis Homes Graphic Design Department.

EBEXH GD54096 / 02.20







# The Gateway

Bexhill-on-Sea

Development plan

[bovishomes.co.uk](http://bovishomes.co.uk)

**Bovis  
Homes** 



# The Gateway

Bexhill-on-Sea





# The Gateway

Bexhill-on-Sea,  
East Sussex TN40 2LU

01424 574 013

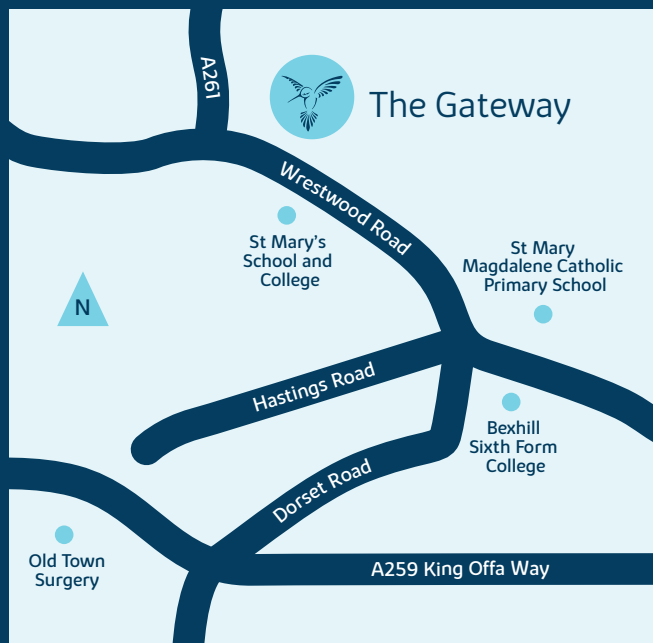
bexhill.sales@bovishomes.co.uk

## From Hastings

- Leave Hastings on the A259 heading west
- At the roundabout, take the 3rd exit onto A2036 Hastings Road
- Follow Hastings Road as it merges into Wrestwood Road
- Follow the signage to The Gateway and the development will be on your right hand side

## From Eastbourne

- Head north-east on A259 Seaside Road towards Cavendish Place
- At Seaside Roundabout, take the 2nd exit onto A259 Seaside and continue to follow A259
- At Harbour roundabout, take the 1st exit and stay on A259 Pevensey Bay Road
- Turn left onto A259 Wallsend Road and continue to follow the road
- At the roundabout take the 3rd exit and stay on A259
- At the roundabout, take the 3rd exit onto A259 Little Common Road
- Slight left onto W Down Road
- Turn right onto Woodsgate Park
- Turn left onto A269 London Road and continue to follow the road
- Turn right onto A2036 Wrestwood Road
- Follow the signage to The Gateway and the development will be on your left hand side



MIX  
Paper from  
responsible sources  
FSC® C014177

When you have finished with this leaflet please recycle it.

This plan has been produced for home identification purposes only and may be subject to change. Please check the details of your chosen plot and house type with the sales consultant. Development layout plan correct at time of going to print.

Bovis Homes Limited, Kent region  
11 Tower View, Kings Hill, West Malling, Kent ME19 4UY. Telephone: 01732 280 400

Produced by the Bovis Homes Graphic Design Department.  
EBEXH GD56533 / 08.20







# The Amberley

2 bedroom home

[bovishomes.co.uk](https://bovishomes.co.uk)

**Bovis  
Homes** 

# The Amberley

## 2 bedroom home

Ground floor	metres	feet / inches
Kitchen	3.07 x 1.85	10' 1" x 6' 1"
Sitting room / dining area	4.52 x 4.05	14' 10" x 13' 3"

### First floor

Bedroom 1	4.05 x 2.80	13' 3" x 9' 2"
Bedroom 2	4.05 x 3.42	13' 3" x 11' 3"

### The Amberley | P202 EBEXH |

This floorplan has been produced for illustrative purposes only. Room sizes shown are between arrow points as indicated on plan. The dimensions have tolerances of + or -50mm and should not be used other than for general guidance. If specific dimensions are required, enquiries should be made to the sales consultant.

\* Alternative window layout applies to selected plots only. Please see sales consultant for further details.

① Windows apply to selected plots only. Please see sales consultant for further details.

ovn	oven	ffzs	fridge freezer space
h	hob	cup'd	cupboard
ws	washing machine space	◀ ▶	measuring points

Please refer to the sales consultant for specific plot details as the illustrations shown are computer generated impressions of how the property may look so are indicative only. External details or finishes may vary on individual plots and homes may be built in either detached or attached styles depending on the development layout. Exact specifications, window styles and whether a property is left or right handed may differ from plot to plot.

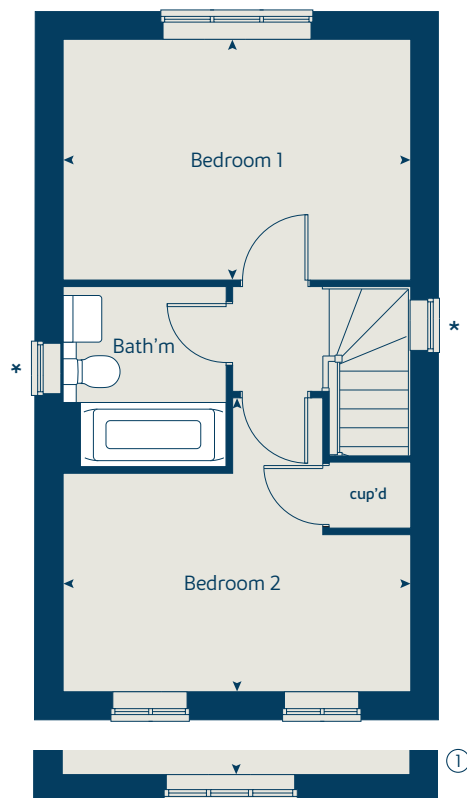
The floorplans shown are not to scale. Measurements are based on the original drawings. Slight variations may occur during construction.

Produced by the Vistry Group Design Studio.

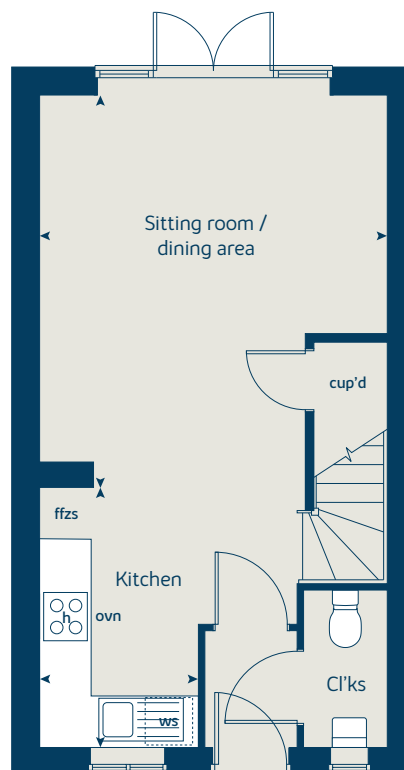
When you have finished with this leaflet please recycle it.

EBEXH GD58295 / 01.21

### First floor



### Ground floor







# The Kittiwake

3 bedroom home

[bovishomes.co.uk](https://bovishomes.co.uk)

**Bovis  
Homes** 

# The Kittiwake

## 3 bedroom home

Ground floor	metres	feet/inches
Kitchen	2.83 x 2.48	9' 3" x 8' 1"
Sitting room/dining area	5.37 x 4.75	17' 7" x 15' 7"

### First floor

Bedroom 1	3.90 x 3.13	12' 9" x 10' 3"
Bedroom 2	3.72 x 2.80	12' 2" x 9' 2"
Bedroom 3	3.18 x 1.96	10' 5" x 6' 5"
Study	2.70 x 2.13	8' 10" x 6' 11"

### The Kittiwake | SE3067 EBEXH B19 |

This floorplan has been produced for illustrative purposes only. Room sizes shown are between arrow points as indicated on plan. The dimensions have tolerances of + or - 50mm and should not be used other than for general guidance. If specific dimensions are required, enquiries should be made to the sales advisor.

ovn	oven	f/fzs	fridge freezer space
h	hob	cup'd	cupboard
ds	dishwasher space	←→	measuring points
ws	washing machine space		

Please refer to the sales consultant for specific plot details as the illustrations shown are computer generated impressions of how the property may look so are indicative only. External details or finishes may vary on individual plots and homes may be built in either detached or attached styles depending on the development layout. Exact specifications, window styles and whether a property is left or right handed may differ from plot to plot.

The floorplans shown are not to scale. Measurements are based on the original drawings. Slight variations may occur during construction.

Produced by the Vistry Group Design Studio.

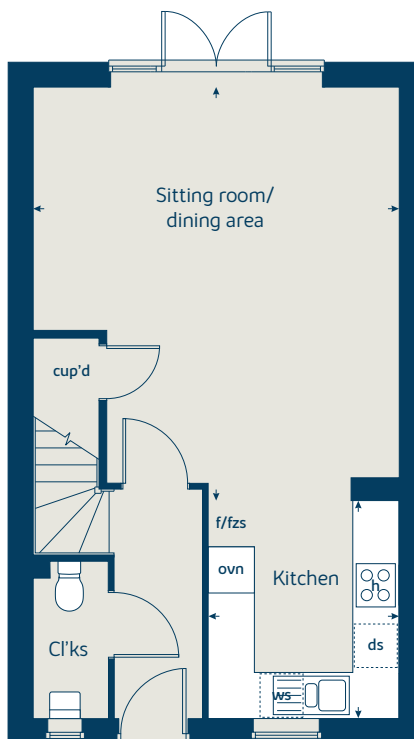
When you have finished with this leaflet please recycle it.

EBEXH Printed 06.2019

### First floor



### Ground floor







# The Goldcrest

3 bedroom home

[bovishomes.co.uk](https://bovishomes.co.uk)

**Bovis  
Homes** 

# The Goldcrest

## 3 bedroom home

Ground floor	metres	feet / inches
Kitchen / dining room	5.60 x 2.93	18' 4" x 9' 8"
Sitting room	4.98 x 3.42	16' 4" x 11' 3"

### First floor

Bedroom 1	4.55 x 3.25	14' 11" x 10' 8"
Bedroom 2	3.46 x 2.74	11' 2" x 9' 0"
Bedroom 3	2.93 x 2.07	9' 8" x 6' 10"

### The Goldcrest | SE3072 EBEXH |

This floorplan has been produced for illustrative purposes only. Room sizes shown are between arrow points as indicated on plan. The dimensions have tolerances of + or -50mm and should not be used other than for general guidance. If specific dimensions are required, enquiries should be made to the sales advisor.

ovn	oven	ffzs	fridge freezer space
h	hob	cup'd	cupboard
ds	dishwasher space	◀ ▶	measuring points
ws	washing machine space		

Please refer to the sales consultant for specific plot details as the illustrations shown are computer generated impressions of how the property may look so are indicative only. External details or finishes may vary on individual plots and homes may be built in either detached or attached styles depending on the development layout. Exact specifications, window styles and whether a property is left or right handed may differ from plot to plot.

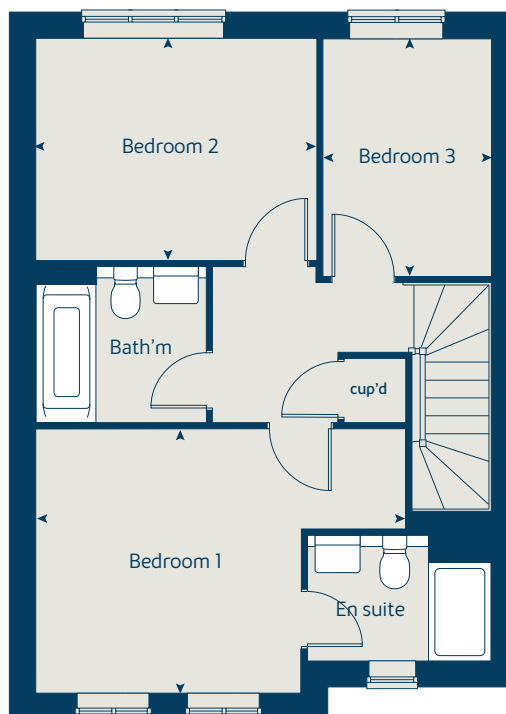
The floorplans shown are not to scale. Measurements are based on the original drawings. Slight variations may occur during construction.

Produced by the Vistry Group Design Studio.

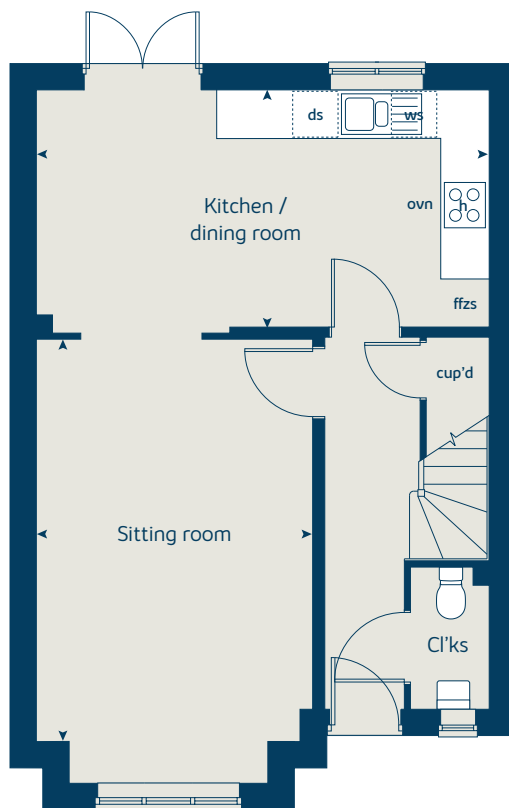
When you have finished with this leaflet please recycle it.

EBEXH GD54096 / 02.20

### First floor



### Ground floor







# The Kingfisher

3 bedroom home

[bovishomes.co.uk](http://bovishomes.co.uk)

**Bovis  
Homes** 

# The Kingfisher

## 3 bedroom home

Ground floor	metres	feet / inches
Kitchen / dining room	5.60 x 3.01	18' 4" x 9' 11"
Sitting room	4.98 x 3.42	16' 4" x 11' 3"

### First floor

Bedroom 1	4.55 x 3.25	16' 4" x 10' 8"
Bedroom 2	3.46 x 2.73	11' 4" x 9' 0"
Bedroom 3	2.93 x 2.07	9' 8" x 6' 10"

### The Kingfisher | SE3068 EBEXH |

This floorplan has been produced for illustrative purposes only. Room sizes shown are between arrow points as indicated on plan. The dimensions have tolerances of + or -50mm and should not be used other than for general guidance. If specific dimensions are required, enquiries should be made to the sales advisor.

ovn	oven	ffzs	fridge freezer space
h	hob	cup'd	cupboard
ds	dishwasher space	◀ ▶	measuring points
ws	washing machine space		

Please refer to the sales consultant for specific plot details as the illustrations shown are computer generated impressions of how the property may look so are indicative only. External details or finishes may vary on individual plots and homes may be built in either detached or attached styles depending on the development layout. Exact specifications, window styles and whether a property is left or right handed may differ from plot to plot.

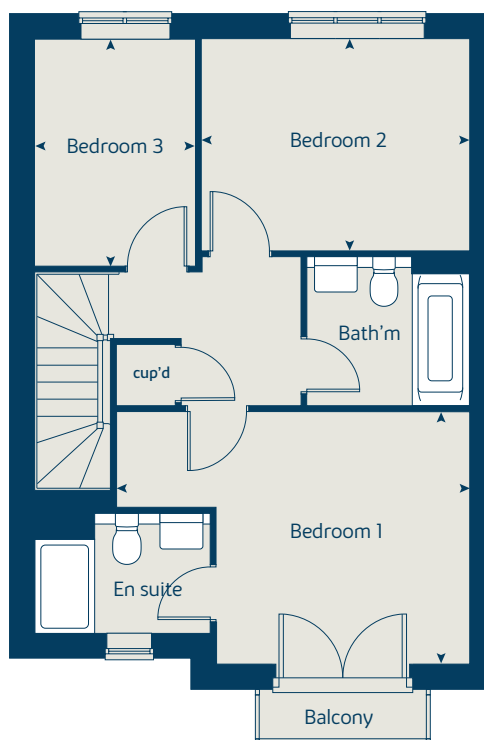
The floorplans shown are not to scale. Measurements are based on the original drawings. Slight variations may occur during construction.

Produced by the Vistry Group Design Studio.

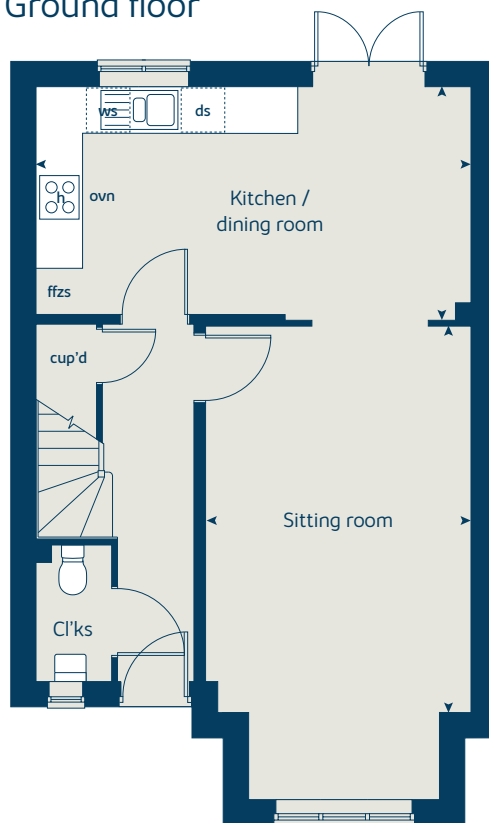
When you have finished with this leaflet please recycle it.

EBEXH GD54096 / 02.20

### First floor



### Ground floor







# The Southwold

3 bedroom home

[bovishomes.co.uk](https://bovishomes.co.uk)

**Bovis  
Homes** 

# The Southwold

## 3 bedroom home

Ground floor	metres	feet / inches
Kitchen	2.83 x 2.48	9' 3" x 8' 1"
Sitting room / dining area	5.37 x 4.75	17' 7" x 15' 7"

### First floor

Bedroom 1	3.90 x 3.13	12' 9" x 10' 3"
Bedroom 2	3.18 x 2.71	10' 5" x 8' 11"
Bedroom 3	3.18 x 1.96	10' 5" x 6' 5"

### The Southwold | P302 Gu Fs EBEXH |

This floorplan has been produced for illustrative purposes only. Room sizes shown are between arrow points as indicated on plan. The dimensions have tolerances of + or -50mm and should not be used other than for general guidance. If specific dimensions are required, enquiries should be made to the sales advisor.

① Alternative window layout applies to selected plots only. Please see sales advisor for further details.

\* Windows apply to selected plots only. Please see sales advisor for further details.

ovn	oven	ffzs	fridge freezer space
h	hob	cup'd	cupboard
ds	dishwasher space	◀ ▶	measuring points
ws	washing machine space		

Please refer to the sales consultant for specific plot details as the illustrations shown are computer generated impressions of how the property may look so are indicative only. External details or finishes may vary on individual plots and homes may be built in either detached or attached styles depending on the development layout. Exact specifications, window styles and whether a property is left or right handed may differ from plot to plot.

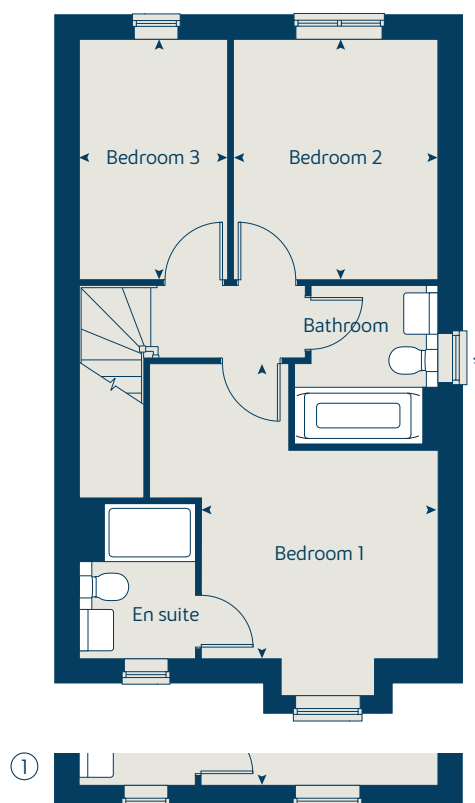
The floorplans shown are not to scale. Measurements are based on the original drawings. Slight variations may occur during construction.

Produced by the Vistry Group Design Studio.

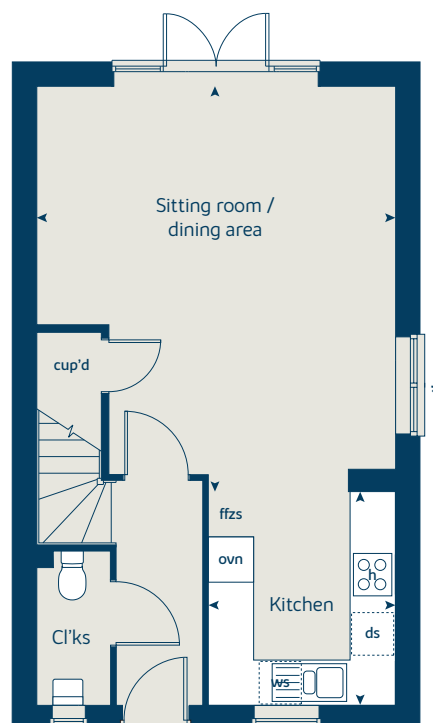
When you have finished with this leaflet please recycle it.

EBEXH GD54096 / 02.20

### First floor



### Ground floor







# The Sheringham

3 bedroom home

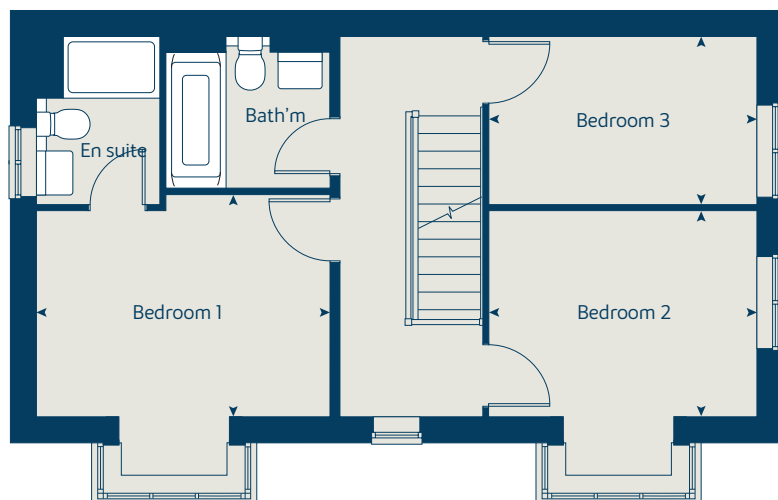
[bovishomes.co.uk](https://bovishomes.co.uk)

**Bovis  
Homes** 

# The Sheringham

## 3 bedroom home

### First floor



Ground floor	metres	feet / inches
Kitchen / dining area	4.75 x 3.31	15' 7" x 10' 10"
Sitting room	4.75 x 3.30	15' 7" x 10' 10"

### First floor

Bedroom 1	3.67 x 2.78	12' 0" x 9' 1"
Bedroom 2	3.35 x 2.57	11' 0" x 8' 5"
Bedroom 3	3.35 x 2.10	11' 0" x 6' 11"

### The Sheringham | P303 Gv Fs vt EBEXH B19 |

This floorplan has been produced for illustrative purposes only. Room sizes shown are between arrow points as indicated on plan. The dimensions have tolerances of + or -50mm and should not be used other than for general guidance. If specific dimensions are required, enquiries should be made to the sales advisor.

ovn	oven	ffzs	fridge freezer space
h	hob	cup'd	cupboard
ds	dishwasher space	◀ ▶	measuring points
ws	washing machine space		

Please refer to the sales consultant for specific plot details as the illustrations shown are computer generated impressions of how the property may look so are indicative only. External details or finishes may vary on individual plots and homes may be built in either detached or attached styles depending on the development layout. Exact specifications, window styles and whether a property is left or right handed may differ from plot to plot.

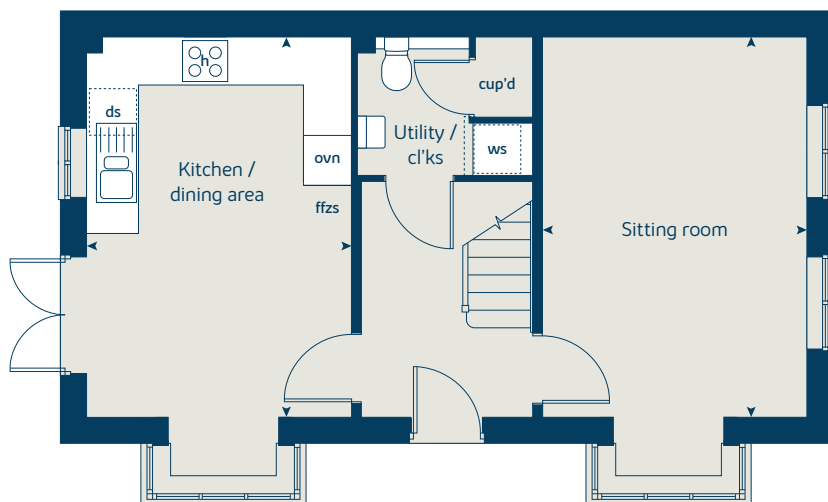
The floorplans shown are not to scale. Measurements are based on the original drawings. Slight variations may occur during construction.

Produced by the Vistry Group Design Studio.

When you have finished with this leaflet please recycle it.

EBEXH GD54096 / 02.20

### Ground floor







# The Canterbury

4 bedroom home

[bovishomes.co.uk](http://bovishomes.co.uk)

**Bovis  
Homes** 

# The Canterbury

## 4 bedroom home

Ground floor	metres	feet / inches
Kitchen / dining area	7.70 x 3.15	25' 3" x 10' 3"
Sitting room	4.50 x 3.50	14' 9" x 11' 6"
Study	2.32 x 2.02	7' 8" x 6' 8"

### First floor

Bedroom 1	3.54 x 3.26	11' 8" x 10' 9"
Bedroom 2	4.36 x 2.82	14' 4" x 9' 2"
Bedroom 3	3.05 x 3.02	10' 0" x 8' 2"
Bedroom 4	3.21 x 2.49	10' 6" x 8' 2"

### The Canterbury | P404 vt EBEXH |

This floorplan has been produced for illustrative purposes only. Room sizes shown are between arrow points as indicated on plan. The dimensions have tolerances of + or - 50mm and should not be used other than for general guidance. If specific dimensions are required, enquiries should be made to the sales advisor.

ovn	oven	ffzs	fridge freezer space
h	hob	cup'd	cupboard
ds	dishwasher space	w	wardrobe
ws	washing machine space	◀ ▶	measuring points

Please refer to the sales consultant for specific plot details as the illustrations shown are computer generated impressions of how the property may look so are indicative only. External details or finishes may vary on individual plots and homes may be built in either detached or attached styles depending on the development layout. Exact specifications, window styles and whether a property is left or right handed may differ from plot to plot.

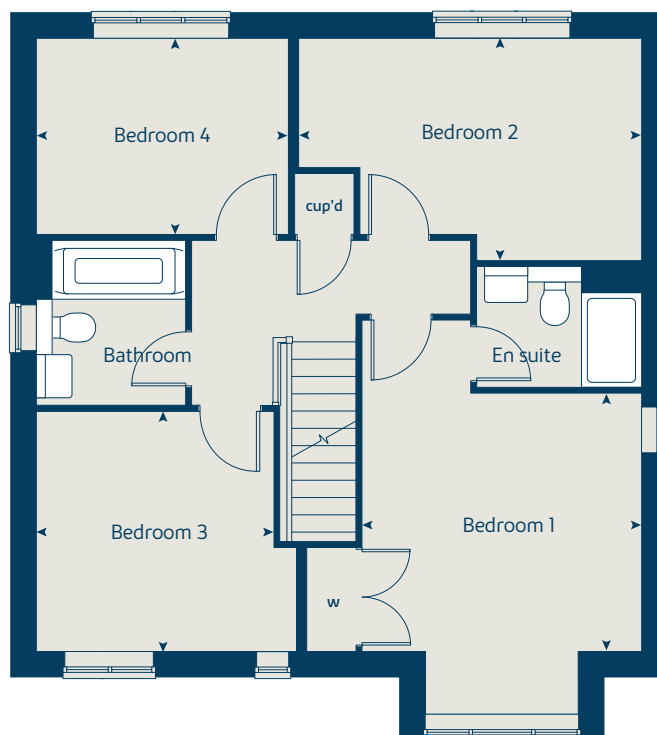
The floorplans shown are not to scale. Measurements are based on the original drawings. Slight variations may occur during construction.

Produced by the Vistry Group Design Studio.

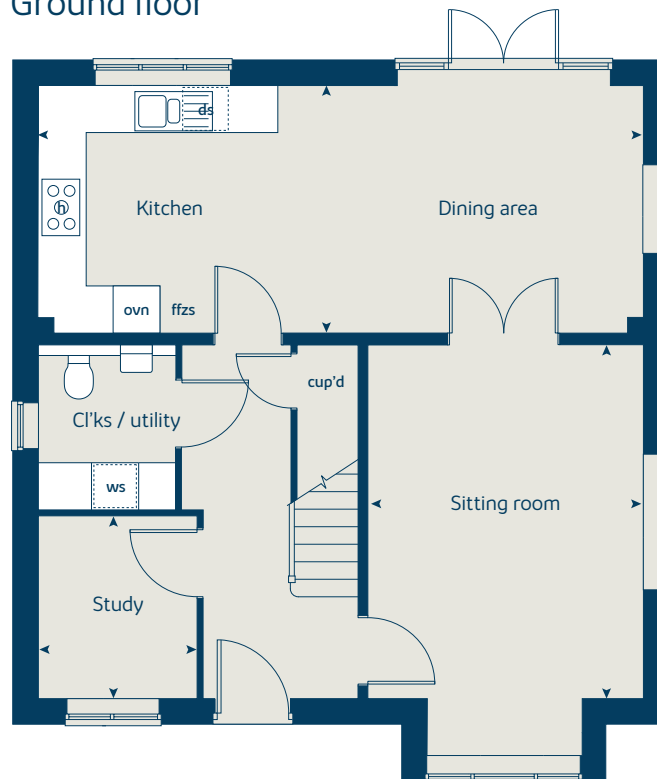
When you have finished with this leaflet please recycle it.

EBEXH GD54096 / 02.20

### First floor



### Ground floor







# The Linnet

4 bedroom home

[bovishomes.co.uk](http://bovishomes.co.uk)

**Bovis  
Homes** 

# The Linnet

## 4 bedroom home

Ground floor	metres	feet/inches
Kitchen	4.08 x 3.15	13' 5" x 10' 4"
Sitting room/dining area	5.35 x 3.79	17' 7" x 12' 5"

### First floor

Bedroom 2	4.13 x 3.17	13' 7" x 10' 5"
Bedroom 3	3.74 x 3.17	12' 3" x 10' 5"
Bedroom 4	3.08 x 2.10	10' 1" x 6' 11"

### First floor

Bedroom 1	6.17 x 4.32	20' 2" x 14' 2"
-----------	-------------	-----------------

### The Linnet | SE4039 EBEXH B19 |

This floorplan has been produced for illustrative purposes only. Room sizes shown are between arrow points as indicated on plan. The dimensions have tolerances of + or -50mm and should not be used other than for general guidance. If specific dimensions are required, enquiries should be made to the sales advisor.

ovn	oven	f/fzs	fridge freezer space
h	hob	w	wardrobe
ds	dishwasher space	cup'd	cupboard
ws	washing machine space	↔	measuring points

Please refer to the sales consultant for specific plot details as the illustrations shown are computer generated impressions of how the property may look so are indicative only. External details or finishes may vary on individual plots and homes may be built in either detached or attached styles depending on the development layout. Exact specifications, window styles and whether a property is left or right handed may differ from plot to plot.

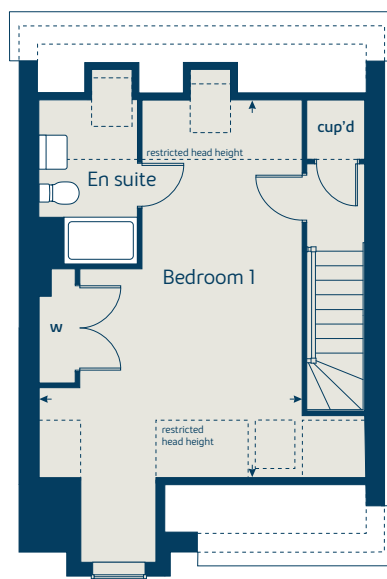
The floorplans shown are not to scale. Measurements are based on the original drawings. Slight variations may occur during construction.

Produced by the Vistry Group Design Studio.

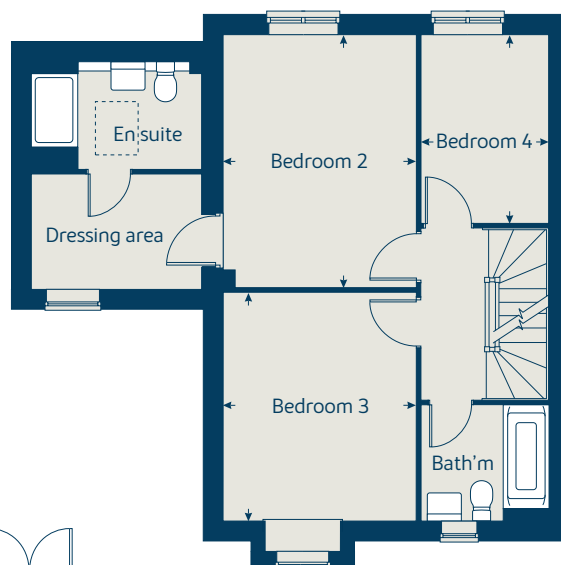
When you have finished with this leaflet please recycle it.

EBEXH Printed 06.2019

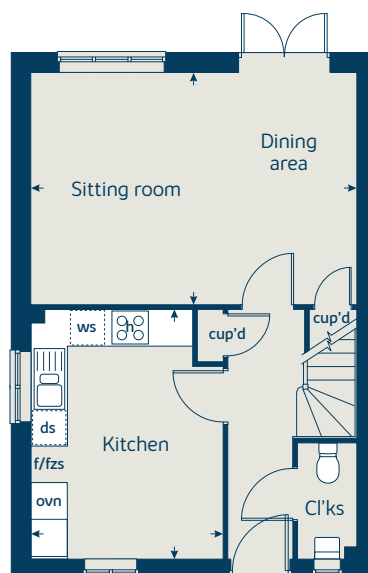
## Second floor



## First floor



## Ground floor







# The Montpellier

4 bedroom home

[bovishomes.co.uk](http://bovishomes.co.uk)

**Bovis  
Homes** 

# The Montpellier

## 4 bedroom home

Ground floor**	metres	feet / inches
Kitchen	3.76 x 2.43	12' 4" x 8' 0"
Dining area	3.17 x 3.03	10' 5" x 9' 11"
Sitting room	5.60 x 4.28	18' 5" x 14' 1"

First floor**	metres	feet / inches
Bedroom 1	3.98 x 3.09	13' 1" x 10' 2"
Bedroom 2	3.41 x 3.04	11' 2" x 10' 0"
Bedroom 3	3.40 x 2.48	11' 2" x 8' 2"
Bedroom 4	2.44 x 2.42	8' 0" x 7' 11"

### The Montpellier | P403VT1 Gq Fm vt EBEXH |

This floorplan has been produced for illustrative purposes only. Room sizes shown are between arrow points as indicated on plan. The dimensions have tolerances of + or -50mm and should not be used other than for general guidance. If specific dimensions are required, enquiries should be made to the sales advisor.

\* Windows apply to selected plots only. Please see sales advisor for further details.

\*\* Dimensions will differ to plot 6 only. Please see sales advisor for further details.

ovn	oven	ffzs	fridge freezer space
h	hob	w	wardrobe
ds	dishwasher space	cup'd	cupboard
ws	washing machine space	◀ ▶	measuring points

Please refer to the sales consultant for specific plot details as the illustrations shown are computer generated impressions of how the property may look so are indicative only. External details or finishes may vary on individual plots and homes may be built in either detached or attached styles depending on the development layout. Exact specifications, window styles and whether a property is left or right handed may differ from plot to plot.

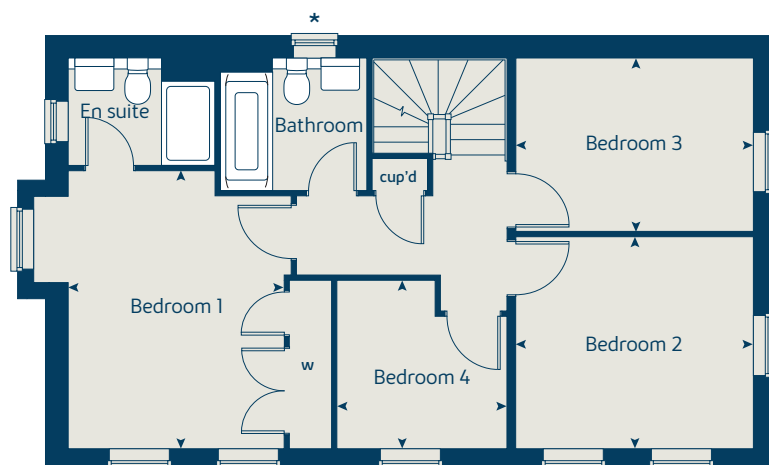
The floorplans shown are not to scale. Measurements are based on the original drawings. Slight variations may occur during construction.

Produced by the Vistry Group Design Studio.

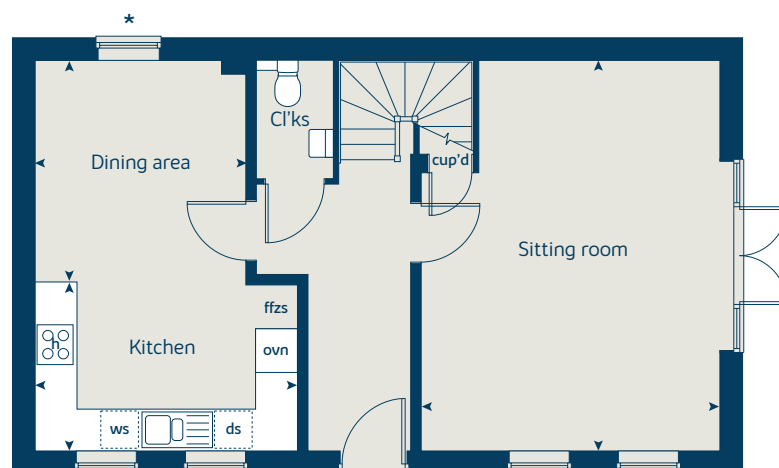
When you have finished with this leaflet please recycle it.

EBEXH GD54096 / 02.20

### First floor



### Ground floor







# The Wimborne

4 bedroom home

[bovishomes.co.uk](http://bovishomes.co.uk)

**Bovis  
Homes** 

# The Wimborne

## 4 bedroom home

Ground floor	metres	feet / inches
Kitchen	4.08 x 3.15	13' 4" x 9' 10"
Dining area / sitting room	5.35 x 3.79	17' 7" x 12' 5"

First floor	metres	feet / inches
Bedroom 2	4.13 x 3.17	13' 7" x 10' 5"
Bedroom 3	3.76 x 3.17	12' 3" x 10' 5"
Study	3.08 x 2.10	10' 1" x 6' 11"

Second floor	metres	feet / inches
Bedroom 1	6.18 x 4.30	20' 3" x 14' 1"

### The Wimborne | P3409 CBKME |

This floorplan has been produced for illustrative purposes only. Room sizes shown are between arrow points as indicated on plan. The dimensions have tolerances of + or -50mm and should not be used other than for general guidance. If specific dimensions are required, enquiries should be made to the sales consultant.

\* Windows apply to selected plots only.  
Please see sales consultant for further details.

ovn	oven	ffzs	fridge freezer space
h	hob	w	wardrobe
ws	washing machine space	cup'd	cupboard
ds	dishwasher space	◀ ▶	measuring points

Please refer to the sales consultant for specific plot details as the illustrations shown are computer generated impressions of how the property may look so are indicative only. External details or finishes may vary on individual plots and homes may be built in either detached or attached styles depending on the development layout. Exact specifications, window styles and whether a property is left or right handed may differ from plot to plot.

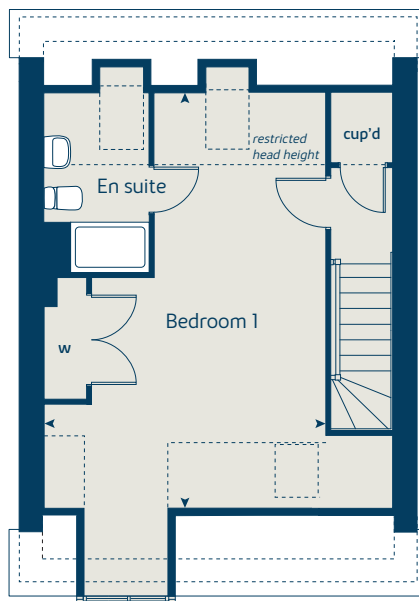
The floorplans shown are not to scale. Measurements are based on the original drawings. Slight variations may occur during construction.

Produced by the Vistry Group Design Studio.

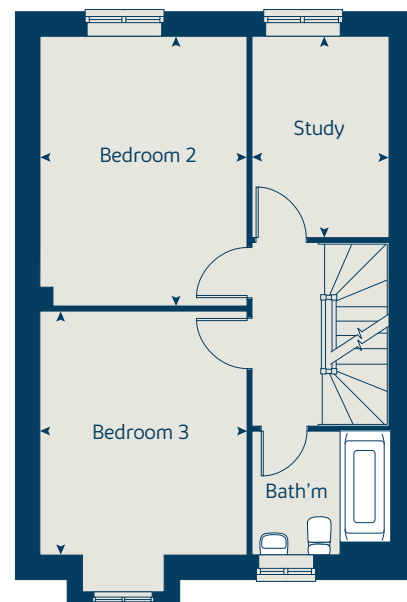
When you have finished with this leaflet please recycle it.

EBEXH GD60316 / 07.21

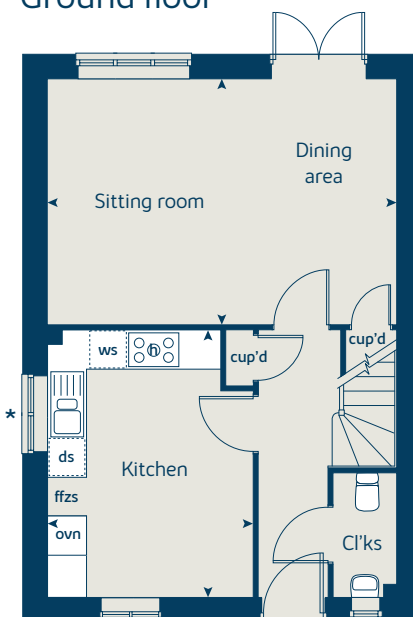
### Second floor



### First floor



### Ground floor







# The Falcon

5 bedroom home

[bovishomes.co.uk](http://bovishomes.co.uk)

**Bovis  
Homes** 

# The Falcon

## 5 bedroom home

Ground floor	metres	feet / inches
Kitchen / family area	6.12 x 3.68	20' 3" x 12' 1"
Sitting room	4.60 x 3.85	15' 1" x 12' 7"
Dining room	3.68 x 3.10	12' 1" x 10' 2"
Study	3.00 x 2.40	9' 10" x 7' 10"

### First floor

Bedroom 1	6.10 x 3.45	20' 1" x 11' 3"
Bedroom 2	3.75 x 3.10	12' 4" x 10' 2"
Bedroom 3	3.06 x 2.70	10' 0" x 8' 10"
Bedroom 4	3.00 x 2.70	9' 10" x 8' 10"
Bedroom 5	3.85 x 3.22	12' 7" x 10' 7"

### The Falcon | SE5030 EBEXH |

This floorplan has been produced for illustrative purposes only. Room sizes shown are between arrow points as indicated on plan. The dimensions have tolerances of + or -50mm and should not be used other than for general guidance. If specific dimensions are required, enquiries should be made to the sales consultant.

ovn	oven	cyl	hot water cylinder
h	hob	w	wardrobe
dw	dishwasher	cup'd	cupboard
ws	washing machine space	◀ ▶	measuring points
ffzr	fridge freezer		

Please refer to the sales consultant for specific plot details as the illustrations shown are computer generated impressions of how the property may look so are indicative only. External details or finishes may vary on individual plots and homes may be built in either detached or attached styles depending on the development layout. Exact specifications, window styles and whether a property is left or right handed may differ from plot to plot.

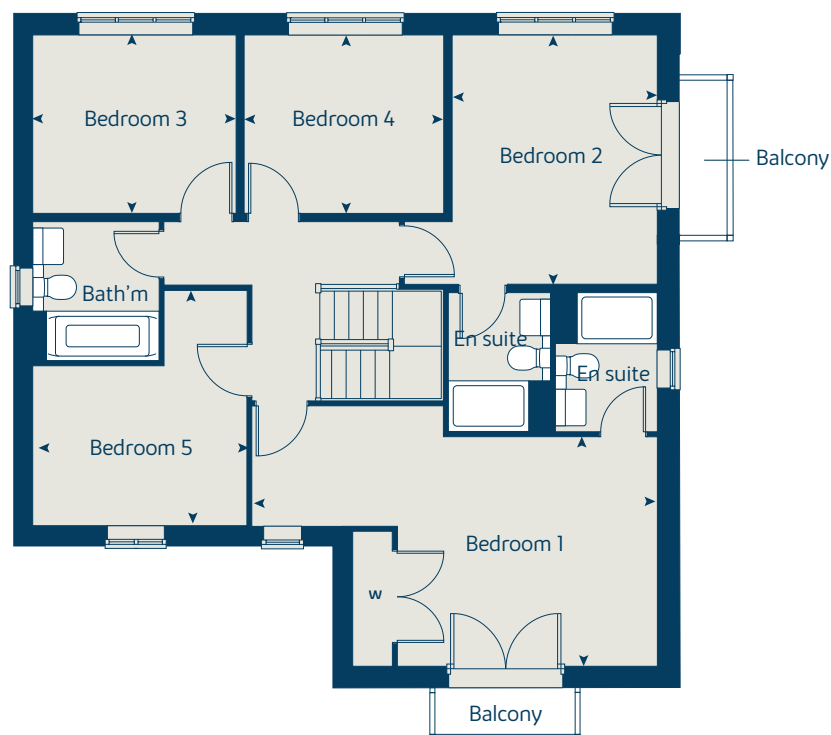
The floorplans shown are not to scale. Measurements are based on the original drawings. Slight variations may occur during construction.

Produced by the Vistry Group Design Studio.

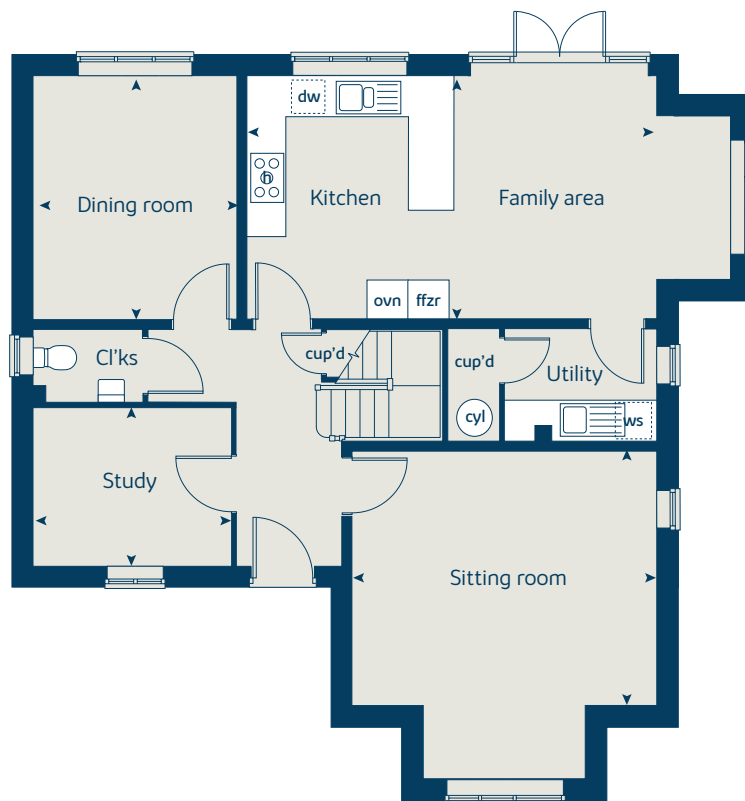
When you have finished with this leaflet please recycle it.

EBEXH GD60316 / 07.21

### First floor



### Ground floor







# The Avocet

5 bedroom home

[bovishomes.co.uk](http://bovishomes.co.uk)

**Bovis  
Homes** 

# The Avocet

## 5 bedroom home

Ground floor	metres	feet / inches
Kitchen / family area	6.12 x 3.68	20' 3" x 12' 1"
Sitting room	4.60 x 3.85	15' 1" x 12' 7"
Dining room	3.68 x 3.10	12' 1" x 10' 2"
Study	3.00 x 2.40	9' 10" x 7' 10"

### First floor

Bedroom 1	6.10 x 3.45	20' 1" x 11' 3"
Bedroom 2	3.75 x 3.10	12' 4" x 10' 2"
Bedroom 3	3.06 x 2.70	10' 0" x 8' 10"
Bedroom 4	3.00 x 2.70	9' 10" x 8' 10"
Bedroom 5	3.85 x 3.22	12' 7" x 10' 7"

### The Avocet | SE5031 EBEXH |

This floorplan has been produced for illustrative purposes only. Room sizes shown are between arrow points as indicated on plan. The dimensions have tolerances of + or -50mm and should not be used other than for general guidance. If specific dimensions are required, enquiries should be made to the sales advisor.

ovn	oven	cyl	hot water cylinder
h	hob	w	wardrobe
dw	dishwasher	cup'd	cupboard
ws	washing machine space	◀ ▶	measuring points
ffzr	fridge freezer		

Please refer to the sales consultant for specific plot details as the illustrations shown are computer generated impressions of how the property may look so are indicative only. External details or finishes may vary on individual plots and homes may be built in either detached or attached styles depending on the development layout. Exact specifications, window styles and whether a property is left or right handed may differ from plot to plot.

The floorplans shown are not to scale. Measurements are based on the original drawings. Slight variations may occur during construction.

Produced by the Vistry Group Design Studio.

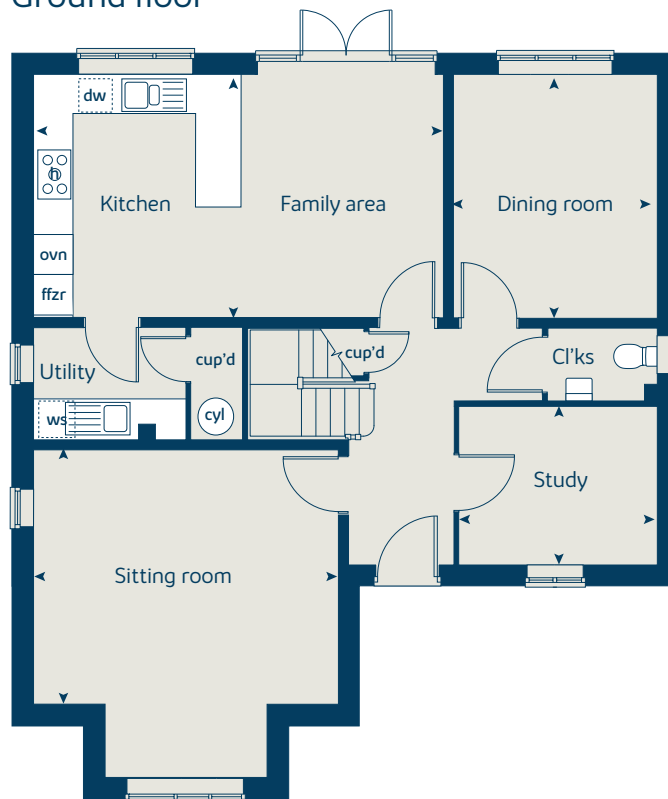
When you have finished with this leaflet please recycle it.

EBEXH GD60316 / 07.21

### First floor



### Ground floor







# The Firecrest

5 bedroom home

[bovishomes.co.uk](http://bovishomes.co.uk)

**Bovis  
Homes** 

# The Firecrest

## 5 bedroom home

Ground floor	metres	feet / inches
Kitchen / dining area	8.00 x 3.60	26' 3" x 11' 10"
Sitting room	5.80 x 3.80	19' 0" x 12' 6"
Study	2.53 x 2.10	8' 4" x 6' 11"

### First floor

Bedroom 1	3.80 x 3.62	12' 6" x 11' 10"
Bedroom 2	3.08 x 3.00	10' 1" x 9' 10"
Bedroom 3	3.62 x 2.65	11' 10" x 8' 8"
Bedroom 4	3.05 x 2.97	9' 10" x 9' 9"
Bedroom 5	3.05 x 2.18	10' 0" x 7' 2"

### The Firecrest | SE5027 (P508) EBEXH |

This floorplan has been produced for illustrative purposes only. Room sizes shown are between arrow points as indicated on plan. The dimensions have tolerances of + or -50mm and should not be used other than for general guidance. If specific dimensions are required, enquiries should be made to the sales advisor.

ovn	oven	ffzr	fridge freezer
h	hob	w	wardrobe
wm	washing machine	cyl	hot water cylinder
dw	dishwasher	◀ ▶	measuring points

Please refer to the sales consultant for specific plot details as the illustrations shown are computer generated impressions of how the property may look so are indicative only. External details or finishes may vary on individual plots and homes may be built in either detached or attached styles depending on the development layout. Exact specifications, window styles and whether a property is left or right handed may differ from plot to plot.

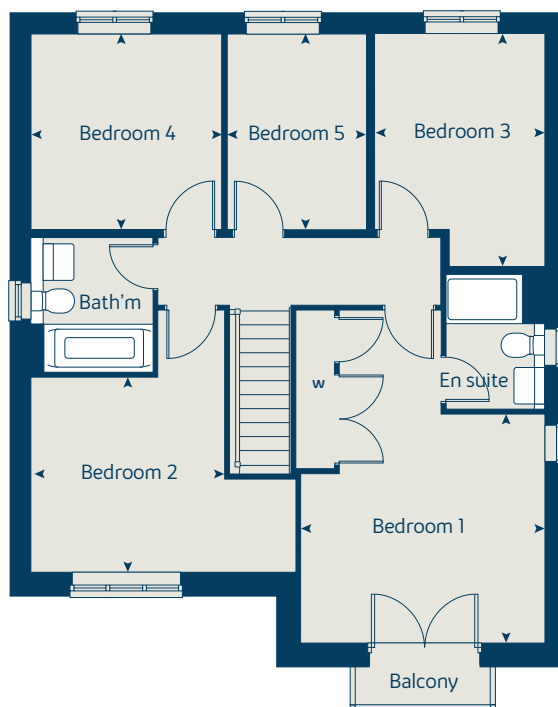
The floorplans shown are not to scale. Measurements are based on the original drawings. Slight variations may occur during construction.

Produced by the Vistry Group Design Studio.

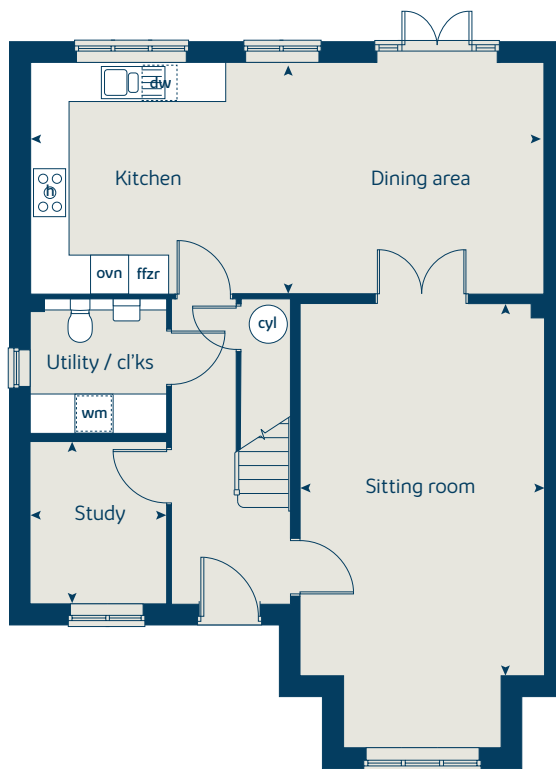
When you have finished with this leaflet please recycle it.

EBEXH GD54096 / 02.20

### First floor



### Ground floor







# The Osprey

5 bedroom home

[bovishomes.co.uk](http://bovishomes.co.uk)

**Bovis  
Homes** 

# The Osprey

## 5 bedroom home

Ground floor	metres	feet / inches
Kitchen / family area	6.19 x 3.68	20' 4" x 12' 1"
Sitting room	4.60 x 3.85	15' 1" x 12' 8"
Dining room	3.68 x 3.08	12' 1" x 10' 2"
Study	3.00 x 2.39	9' 10" x 7' 10"

### First floor

Bedroom 1	6.12 x 3.46	20' 1" x 11' 4"
Bedroom 2	3.75 x 3.10	12' 4" x 10' 2"
Bedroom 3	3.06 x 2.68	9' 10" x 8' 9"
Bedroom 4	3.01 x 2.68	9' 10" x 8' 9"
Bedroom 5	3.56 x 3.22	11' 8" x 10' 7"

### The Osprey | SE5029 (P502) EBEXH |

This floorplan has been produced for illustrative purposes only. Room sizes shown are between arrow points as indicated on plan. The dimensions have tolerances of + or -50mm and should not be used other than for general guidance. If specific dimensions are required, enquiries should be made to the sales advisor.

ovn	oven	cyl	hot water cylinder
h	hob	w	wardrobe
dw	dishwasher	cup'd	cupboard
wm	washing machine	◀ ▶	measuring points
ffzr	fridge freezer		

Please refer to the sales consultant for specific plot details as the illustrations shown are computer generated impressions of how the property may look so are indicative only. External details or finishes may vary on individual plots and homes may be built in either detached or attached styles depending on the development layout. Exact specifications, window styles and whether a property is left or right handed may differ from plot to plot.

The floorplans shown are not to scale. Measurements are based on the original drawings. Slight variations may occur during construction.

Produced by the Vistry Group Design Studio.

When you have finished with this leaflet please recycle it.

EBEXH GD54096 / 02.20

### First floor



### Ground floor





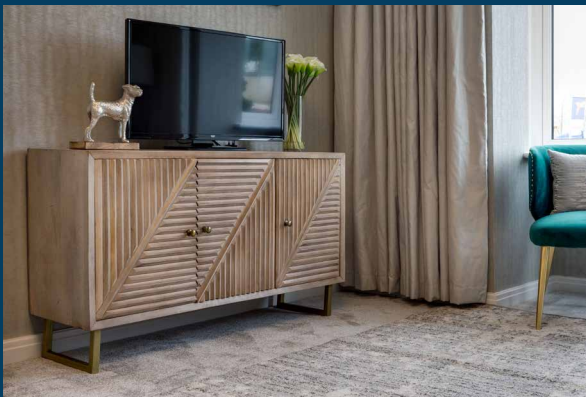
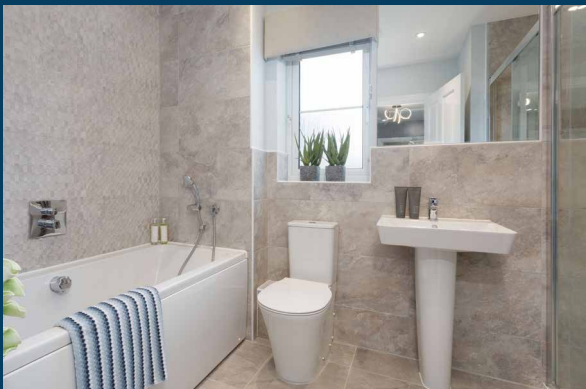
# So much choice...

Part of the excitement of buying a new home is the thrill of being the first person to live in the property and having a brand new contemporary kitchen and modern bathroom. Our premium brand partners ensure that all of our fixtures and fittings comply with the latest Government building regulations and only branded appliances are installed in your new home.

Once you know what specification comes included, you'll have a choice from our specially selected tiles for your kitchen and bathrooms, as well as kitchen worktops and cupboard doors. You can then use the Bovis Homes **Select** brochure to add the finishing touches to your home to make it extra special for you!

From personalising your bathrooms with stunning ceramics, or adding smooth sliding wardrobes to your master bedroom, there are a wide range of additional options and upgrades available.

The availability of items is subject to the stage of build, and can vary by development and house type. Our sales consultants will be happy to provide guidance.



## The Gateway

Bexhill-on-Sea



When you have finished with this leaflet please recycle it.

The Synergy specification shown in this leaflet is correct at the time of going to press. Bovis Homes is continually reviewing and updating the specification on all housetypes and therefore reserves the right to change specification details. Photographs depict a typical Bovis Homes interior and may include optional upgrades. For full details regarding current specification and finishes, for the plots you are interested in, please refer to our sales consultant.

Produced by the Vistry Group Design Studio.

EBEXH GD60726 / 06.21



2 and 3 bedroom specification

[bovishomes.co.uk](http://bovishomes.co.uk)



# The Gateway

## Bexhill-on-Sea



Use this guide to see what features are included in your new home. Your sales consultant will be happy to discuss the **Select** range of extras available.



		2 bedroom	The Amberley	3 bedroom	The Southwold	The Teal	The Crane	The Sheringham	The Cuckoo	The Goldcrest	The Kingfisher	The Jay
Kitchen												
Choice of Standard fitted kitchen (doors and worktops)*	■	■	■	■	■	■	■	■	■	■	■	■
Stainless steel sink and drainer (single bowl) with chrome mixer tap	■											
Stainless steel sink and drainer (single and a half bowl) with chrome mixer tap		■	■	■	■	■	■	■	■	■	■	■
Hob (60cm) with built-in single oven (high level or under), with glass splashback and curved glass chimney hood	■	■	■	■	■	■	■	■	■	■	■	■
Pre-wired for under unit lighting option	■	■	■	■	■	■	■	■	■	■	■	■
Fridge / freezer space	■	■	■	■	■	■	■	■	■	■	■	■
Space for integrated dishwasher with plumbing and electrics (with removable base unit)	■	■	■	■	■	■	■	■	■	■	■	■
Space for washing machine with plumbing and electrics in utility							■	■				
Space for washing machine with plumbing and electrics in kitchen	■	■	■	■					■	■	■	
Bathrooms and en suite(s)												
Ideal Standard contemporary white sanitary ware	■	■	■	■	■	■	■	■	■	■	■	■
Low profile shower tray with glass enclosure		■	■	■	■	■	■	■	■	■	■	■
Handheld hair wash attachment		■	■	■	■	■	■	■	■	■	■	■
Shower over the bath	■											
En suite to bedroom 1		■	■	■	■	■	■	■	■	■	■	■
Choice of Standard Porcelanosa wall tiling (splashback, 1m at full height over bath)*	■											
Choice of Standard Porcelanosa wall tiling (half-height to walls with fitted sanitary ware, half-height over bath, and full-height to shower cubicle)*		■	■	■	■	■	■	■	■	■	■	■
Shaver socket / toothbrush charger to bathroom and main en suite	■	■	■	■	■	■	■	■	■	■	■	■
Chrome bezel LED bulkhead to bathroom and en suite(s)	■	■	■	■	■	■	■	■	■	■	■	■
Radiator or towel warmer in bathroom / en-suite (where applicable)	■	■	■	■	■	■	■	■	■	■	■	■



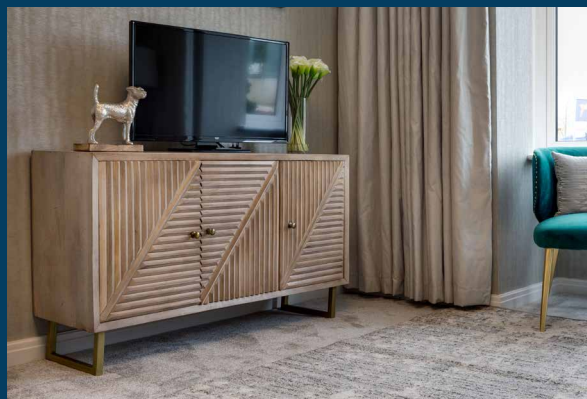
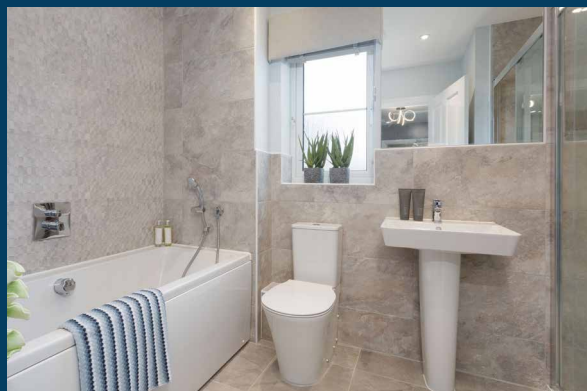
# So much choice...

Part of the excitement of buying a new home is the thrill of being the first person to live in the property and having a brand new contemporary kitchen and modern bathroom. Our premium brand partners ensure that all of our fixtures and fittings comply with the latest Government building regulations and only branded appliances are installed in your new home.

Once you know what specification comes included, you'll have a choice from our specially selected tiles for your kitchen and bathrooms, as well as kitchen worktops and cupboard doors. You can then use the Bovis Homes **Select** brochure to add the finishing touches to your home to make it extra special for you!

From personalising your bathrooms with stunning ceramics, or adding smooth sliding wardrobes to your master bedroom, there are a wide range of additional options and upgrades available.

The availability of items is subject to the stage of build, and can vary by development and house type. Our sales consultants will be happy to provide guidance.



## The Gateway

Bexhill-on-Sea



When you have finished with this leaflet please recycle it.

The Synergy specification shown in this leaflet is correct at the time of going to press. Bovis Homes is continually reviewing and updating the specification on all housetypes and therefore reserves the right to change specification details. Photographs depict a typical Bovis Homes interior and may include optional upgrades. For full details regarding current specification and finishes, for the plots you are interested in, please refer to our sales consultant.

Produced by the Vistry Group Design Studio.

EBEXH GD60726 / 07.21



4 and 5 bedroom specification

[bovishomes.co.uk](http://bovishomes.co.uk)



# The Gateway

## Bexhill-on-Sea



Use this guide to see what features are included in your new home. Your sales consultant will be happy to discuss the **Select** range of extras available.

	4 bedroom	The Montpellier	The Nuthatch	The Fieldfare	The Canterbury	The Dunnock	The Wimborne	5 bedroom	The Osprey	The Falcon	The Avocet	The Firecrest	The Cormorant
Kitchen													
Choice of Standard fitted kitchen (doors and worktops)*	■	■	■	■	■	■	■						
Choice of Premium fitted kitchen (doors and worktops)*								■	■	■	■	■	■
Stainless steel sink and drainer (single bowl) with chrome mixer tap in utility								■	■	■			
Stainless steel sink and drainer (single and a half bowl) with chrome mixer tap	■	■	■	■	■	■	■	■	■	■			
Hotpoint hob (60cm) with built-in double oven (high level or under), with glass splashback and curved glass chimney hood	■	■	■	■	■	■	■						
Hotpoint hob (75cm) with built-in double oven (high level or under), with glass splashback and curved glass chimney hood								■	■	■	■	■	■
LED under unit flexible strip lighting	■	■	■	■	■	■	■	■	■	■	■	■	■
Fridge / freezer space	■	■	■	■	■	■	■						
Integrated (Indesit) 50 / 50 fridge freezer								■	■	■	■	■	■
Space for integrated dishwasher with plumbing and electrics (with removable base unit)	■	■	■	■	■	■	■						
Integrated (Indesit) dishwasher								■	■	■	■	■	■
Space for washing machine with plumbing and electrics in utility					■	■		■	■	■	■	■	■
Space for washing machine with plumbing and electrics in kitchen	■	■	■				■						
Bathrooms and en suite(s)													
Ideal Standard contemporary white sanitary ware suite	■	■	■	■	■	■	■	■	■	■	■	■	■
Ideal Standard close coupled WC with soft closing seat	■	■	■	■	■	■	■	■	■	■	■	■	■
Low profile shower tray with glass enclosure	■	■	■	■	■	■	■	■	■	■	■	■	■
Handheld hair wash attachment	■	■	■	■	■	■	■	■	■	■	■	■	■
En suite to bedroom 1	■	■	■	■	■	■	■	■	■	■	■	■	■
En suite to bedroom 2		■						■	■	■		■	
Choice of Standard Porcelanosa wall tiling (splashback, half-height over bath, and full-height to shower cubicle)*	■	■	■	■	■	■	■						
Choice of Premium Porcelanosa wall tiling (half-height to walls with fitted sanitary ware, half-height over bath, and full-height to shower cubicle)*								■	■	■	■	■	■
Shaver socket / toothbrush charger to bathroom and main en suite	■	■	■	■	■	■	■	■	■	■	■	■	■
Chrome bulkhead light fitting in chrome to bathroom and en suite(s)	■	■	■	■	■	■	■	■	■	■	■	■	■
Radiator or chrome towel warmer in bathroom / en-suite (where applicable)	■	■	■	■	■	■	■	■	■	■	■	■	■
Bedrooms													
Built-in wardrobe(s) to bedroom 1 (with shelf and rail)	■	■	■	■	■	■	■	■	■	■	■	■	■



	4 bedroom	The Montpellier	The Nuthatch	The Fieldfare	The Canterbury	The Dunnock	The Wimborne	5 bedroom	The Osprey	The Falcon	The Avocet	The Firecrest	The Cormorant
Doors and Windows													
Front door with multi-point security locking system and security chain	■	■	■	■	■	■	■						
PVCu double glazing to windows	■	■	■	■	■	■	■						
Double glazed PVCu French doors (house type dependent)	■	■	■	■	■	■	■						
Glazed casement doors between sitting / dining room (where applicable)					■	■						■	■
Cottage style internal doors with chrome lever handles	■	■	■	■	■	■	■						
Paving outside French doors and path to garage personnel door (where applicable)	■	■	■	■	■	■	■						
General													
White painted walls and smooth white ceilings	■	■	■	■	■	■	■						
Combined usb / double sockets in kitchen and bedroom 1	■	■	■	■	■	■	■						
Multi-media point in sitting room	■	■	■	■	■	■	■						
TV point to bedroom 1 and family room (where applicable)	■	■	■	■	■	■	■						
Master telephone socket (plus to study where shown)	■	■	■	■	■	■	■						
Gas central heating with wall mounted boiler and separate hot water cylinder or combi boiler, programme selector and room thermostat(s)	■	■	■	■	■	■	■						
Thermostatic valves to all radiators (with the exception of rooms with separate thermostat control)	■	■	■	■	■	■	■						
Wiring for external light to front porch, and rear door	■	■	■	■	■	■	■						
Mains wired smoke detectors with battery back-up	■	■	■	■	■	■	■						
Power and lighting to 'on plot' garage (where applicable)	■	■	■	■	■	■	■						
Enclosed fenced rear garden, and garden gate (where applicable)	■	■	■	■	■	■	■						
Landscaped front gardens	■	■	■	■	■	■	■						
NHBC Buildmark cover	■	■	■	■	■	■	■						
First two years' customer service support from Bovis Homes	■	■	■	■	■	■	■						

■ Fitted as standard - included in the property  
\* Subject to stage of construction



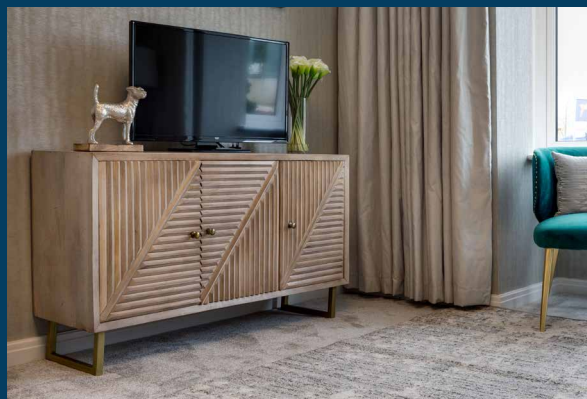
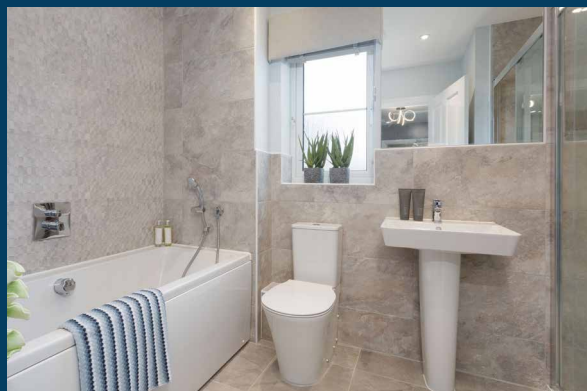
# So much choice...

Part of the excitement of buying a new home is the thrill of being the first person to live in the property and having a brand new contemporary kitchen and modern bathroom. Our premium brand partners ensure that all of our fixtures and fittings comply with the latest Government building regulations and only branded appliances are installed in your new home.

Once you know what specification comes included, you'll have a choice from our specially selected tiles for your kitchen and bathrooms, as well as kitchen worktops and cupboard doors. You can then use the Bovis Homes **Select** brochure to add the finishing touches to your home to make it extra special for you!

From personalising your bathrooms with stunning ceramics, or adding smooth sliding wardrobes to your master bedroom, there are a wide range of additional options and upgrades available.

The availability of items is subject to the stage of build, and can vary by development and house type. Our sales consultants will be happy to provide guidance.



## The Gateway

Bexhill-on-Sea



When you have finished with this leaflet please recycle it.

The Synergy specification shown in this leaflet is correct at the time of going to press. Bovis Homes is continually reviewing and updating the specification on all housetypes and therefore reserves the right to change specification details. Photographs depict a typical Bovis Homes interior and may include optional upgrades. For full details regarding current specification and finishes, for the plots you are interested in, please refer to our sales consultant.

Produced by the Vistry Group Design Studio.

EBEXH GD60726 / 06.21



2 and 3 bedroom specification

[bovishomes.co.uk](http://bovishomes.co.uk)



# The Gateway

## Bexhill-on-Sea



Use this guide to see what features are included in your new home. Your sales consultant will be happy to discuss the **Select** range of extras available.



		2 bedroom	The Amberley	3 bedroom	The Southwold	The Teal	The Crane	The Sheringham	The Cuckoo	The Goldcrest	The Kingfisher	The Jay
Kitchen												
Choice of Standard fitted kitchen (doors and worktops)*	■	■	■	■	■	■	■	■	■	■	■	■
Stainless steel sink and drainer (single bowl) with chrome mixer tap	■											
Stainless steel sink and drainer (single and a half bowl) with chrome mixer tap		■	■	■	■	■	■	■	■	■	■	■
Hob (60cm) with built-in single oven (high level or under), with glass splashback and curved glass chimney hood	■	■	■	■	■	■	■	■	■	■	■	■
Pre-wired for under unit lighting option	■	■	■	■	■	■	■	■	■	■	■	■
Fridge / freezer space	■	■	■	■	■	■	■	■	■	■	■	■
Space for integrated dishwasher with plumbing and electrics (with removable base unit)	■	■	■	■	■	■	■	■	■	■	■	■
Space for washing machine with plumbing and electrics in utility							■	■				
Space for washing machine with plumbing and electrics in kitchen	■	■	■						■	■	■	
Bathrooms and en suite(s)												
Ideal Standard contemporary white sanitary ware	■	■	■	■	■	■	■	■	■	■	■	■
Low profile shower tray with glass enclosure		■	■	■	■	■	■	■	■	■	■	■
Handheld hair wash attachment		■	■	■	■	■	■	■	■	■	■	■
Shower over the bath	■											
En suite to bedroom 1		■	■	■	■	■	■	■	■	■	■	■
Choice of Standard Porcelanosa wall tiling (splashback, 1m at full height over bath)*	■											
Choice of Standard Porcelanosa wall tiling (half-height to walls with fitted sanitary ware, half-height over bath, and full-height to shower cubicle)*		■	■	■	■	■	■	■	■	■	■	■
Shaver socket / toothbrush charger to bathroom and main en suite	■	■	■	■	■	■	■	■	■	■	■	■
Chrome bezel LED bulkhead to bathroom and en suite(s)	■	■	■	■	■	■	■	■	■	■	■	■
Radiator or towel warmer in bathroom / en-suite (where applicable)	■	■	■	■	■	■	■	■	■	■	■	■