



Windrush Place

Witney - Phase 5

A taste of local life

bovishomes.co.uk





Welcome to Windrush Place

This exciting new Phase 5 is close to the picturesque market town of Witney in the beautiful Oxfordshire Cotswolds.

Windrush Place is less than two miles from Witney, with its historic, Cotswold stone buildings and pretty River Windrush. The town centre offers great shopping and there are local schools, health and leisure facilities, as well as easy access to nearby Oxford and the M40.

We've a selection of quality 2, 3, 4 and 5 bedroom homes, all carefully designed to complement their charming Cotswold environment.

So, if you're looking for a fantastic new home, in a stunning West Oxfordshire setting, your search ends here.

Getting around

Windrush Place is just a quarter of a mile from the A40, which provides a direct link to Oxford, 14 miles away, and to Junction 8A of the M40, 21 miles away, for London. For Birmingham, Junction 9 of the M40 is only 12 miles away, via the A40 and A34. It's about an hour by train from Oxford Parkway Station to London Marylebone, and for Birmingham trains run from Hanborough Station, 10 miles away. For air travel Heathrow Airport is 58 miles away, via the M40 and M25.

A trip to the shops

Witney offers a great mix of shopping with smaller, independent retailers and large national stores. Marriotts Walk and Woolgate Shopping Centres are home to brands such as M&S, Waitrose, Waterstones and the thriving High Street has antiques, jewellery, shoes and well-known fashion stores. In the Market Place a monthly Farmers' Market offers tasty, local produce, and on the edge of town you'll find a B&Q, Lidl and Sainsbury's. Oxford, the city of dreaming

spires is less than 15 miles away, with its covered market and indoor shopping malls, or visit Bicester Village, the designer outlet, just a 21 mile drive.

Taking time out

Famous for its woollen Witney blankets, the town is steeped in history, with centuries-old buildings such as the 13th century St Mary's Parish Church, the Blanket Hall and The Buttercross. Today you can enjoy pubs, restaurants, museums, a cinema, a leisure centre, sports clubs, a golf centre and the tranquil Witney Lakes and Meadows. Cogges Manor Farm is a working, Victorian museum and you'll find 12th century archaeological remains at Bishop's Palace. The Cotswold Wildlife Park at Burford is great for animal-lovers and regal Blenheim Palace is only 13 miles away. A few minutes' drive takes you into the Cotswold Area of Outstanding Natural Beauty with its pretty market towns and quintessential English villages.

Education

Nearby are West Witney Primary and Queen Emma's Primary and others include Our Lady of Lourdes Primary, The Batt Church of England Primary School and Tower Hill Primary School. For senior students there's The Henry Box School and Wood Green School, while The King's School is an independent, Christian school for both primary and senior pupils. Nearby Cokethorpe School, is also an independent school for children aged from 4 to 18. For further education there is Abingdon and Witney College. Oxford University has over 30 independent colleges and is within easy reach.



Windrush Place

Witney - Phase 5
Oxfordshire OX29 7AN
01993 624000

From M40 and Oxford

- Leave the M40 at Junction 8a and take the A40 exit for Oxford / Cheltenham
- Continue on the A40 for nearly 10 miles, bypassing Oxford
- Follow A40 for Witney
- After nearly 20 miles take the A415 exit towards Witney
- Take the A415 exit towards Witney
- At the roundabout take the 5th exit for A415
- Turn left into Thorney Leys
- At the roundabout take the first exit onto A4095 Curbridge Road
- Turn right into the Windrush Place development and follow Centenary Way
- Windrush Place Phase 5 can be found straight ahead



MIX
Paper from
responsible sources
FSC® C014177

When you have finished with this leaflet please recycle it.

Cover photograph of Witney. Not view from the development. The streetscene shown above has been produced for illustrative purposes only, please check the details of the homes you are interested in with the sales consultant.

Bovis Homes Limited, Cotswolds region
Cleeve Hall, Cheltenham Road, Bishop's Cleeve, Cheltenham, Gloucestershire GL52 8GD. Telephone: 01242 388 502

Produced by the Vistry Group Design Studio.

WWITY GD55097 / 09.20



Witney - Phase 5





The Hawthorn

2 bedroom home

bovishomes.co.uk

**Bovis
Homes** 

The Hawthorn

2 bedroom home

Ground floor	metres	feet / inches
Kitchen	3.73 x 2.92	12' 2" x 9' 6"
Sitting / dining area	4.07 x 4.05	13' 4" x 13' 3"

First floor

Bedroom 1	4.07 x 2.69	13' 4" x 8' 9"
Bedroom 2	4.07 x 2.82	13' 4" x 9' 3"

The Hawthorn | X203 P7 PH5 WWITY |

This floorplan has been produced for illustrative purposes only. Room sizes shown are between arrow points as indicated on plan. The dimensions have tolerances of + or -50mm and should not be used other than for general guidance. If specific dimensions are required, enquiries should be made to the sales consultant.

* Windows apply to selected plots only. Please see sales consultant for further details.

ovn	oven	ffzs	fridge freezer space
h	hob	cup'd	cupboard
ds	dishwasher space	◀ ▶	measuring points
ws	washing machine space		

Please refer to the sales consultant for specific plot details as the illustrations shown are computer generated impressions of how the property may look so are indicative only. External details or finishes may vary on individual plots and homes may be built in either detached or attached styles depending on the development layout. Exact specifications, window styles and whether a property is left or right handed may differ from plot to plot.

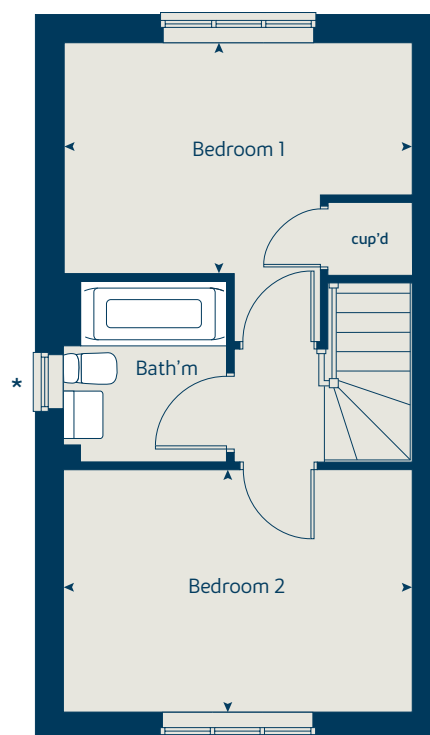
The floorplans shown are not to scale. Measurements are based on the original drawings. Slight variations may occur during construction.

Produced by the Vistry Group Design Studio.

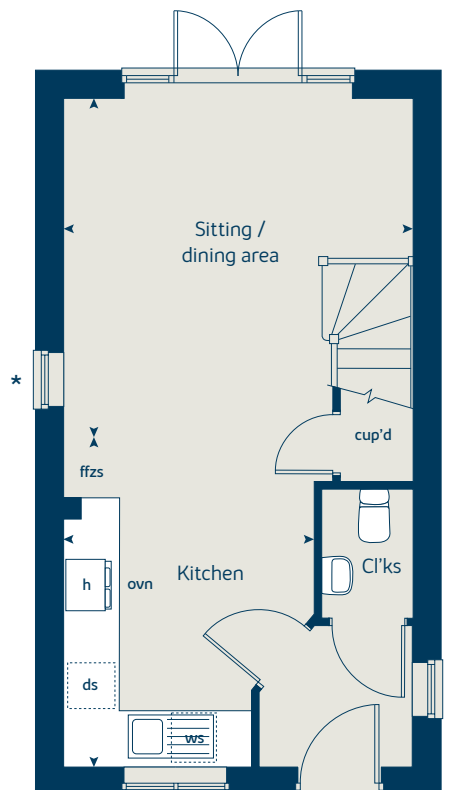
When you have finished with this leaflet please recycle it.

WWITY GD55097 / 09.20

First floor



Ground floor





The Colwell II

2 bedroom home

bovishomes.co.uk

**Bovis
Homes** 

The Colwell II

2 bedroom home

Ground floor	metres	feet / inches
Kitchen	3.12 x 2.11	10' 3" x 6' 11"
Sitting room / dining area	4.20 x 3.79	13' 9" x 12' 5"

First floor

Bedroom 1	4.20 x 2.68	13' 9" x 8' 10"
Bedroom 2	4.20 x 3.16	13' 9" x 10' 5"

The Colwell II | SH238 PH5 WWITY |

This floorplan has been produced for illustrative purposes only. Room sizes shown are between arrow points as indicated on plan. The dimensions have tolerances of + or -50mm and should not be used other than for general guidance. If specific dimensions are required, enquiries should be made to the sales consultant.

ovn	oven	ffzs	fridge freezer space
h	hob	cup'd	cupboard
ds	dishwasher space	◀ ▶	measuring points
ws	washing machine space		

Please refer to the sales consultant for specific plot details as the illustrations shown are computer generated impressions of how the property may look so are indicative only. External details or finishes may vary on individual plots and homes may be built in either detached or attached styles depending on the development layout. Exact specifications, window styles and whether a property is left or right handed may differ from plot to plot.

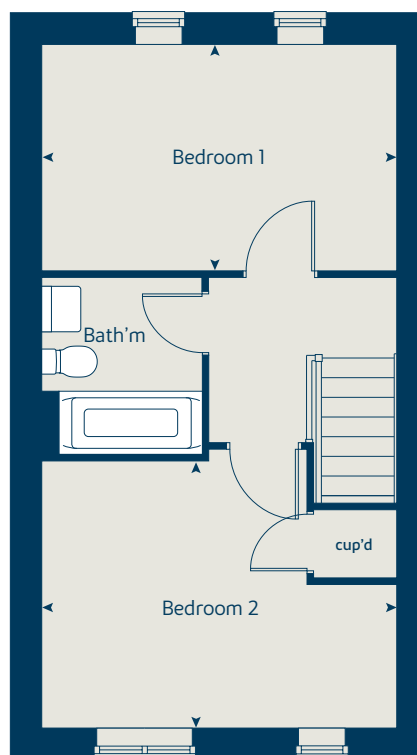
The floorplans shown are not to scale. Measurements are based on the original drawings. Slight variations may occur during construction.

Produced by the Vistry Group Design Studio.

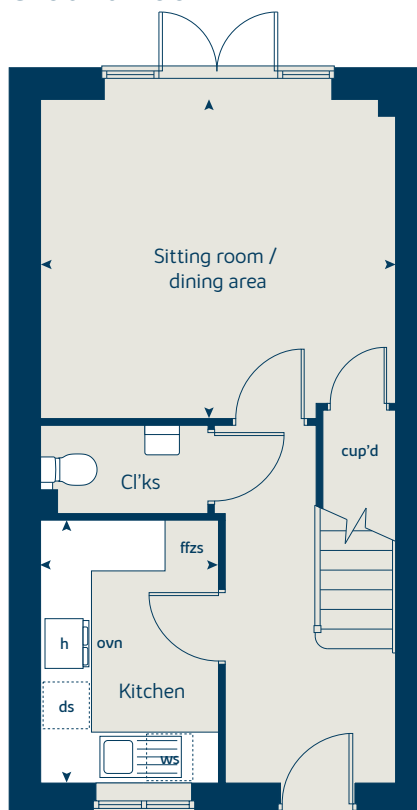
When you have finished with this leaflet please recycle it.

WWITY GD55097 / 09.20

First floor



Ground floor





The Magnolia

3 bedroom home

bovishomes.co.uk

**Bovis
Homes** 

The Magnolia

3 bedroom home

Ground floor	metres	feet / inches
Kitchen / dining room	4.74 x 3.37	15' 6" x 11' 0"
Sitting room	3.72 x 3.72	12' 2" x 12' 2"

First floor

Bedroom 1	3.06 x 2.55	10' 0" x 8' 4"
Bedroom 2	3.00 x 2.55	9' 10" x 8' 4"
Bedroom 3	2.81 x 2.10	9' 2" x 6' 10"

The Magnolia | X327 01 PH5 WWITY |

This floorplan has been produced for illustrative purposes only. Room sizes shown are between arrow points as indicated on plan. The dimensions have tolerances of + or -50mm and should not be used other than for general guidance. If specific dimensions are required, enquiries should be made to the sales consultant.

* Windows apply to selected plots only. Please see sales consultant for further details.

ovn	oven	ffzs	fridge freezer space
h	hob	cup'd	cupboard
ds	dishwasher space	◀ ▶	measuring points
ws	washing machine space		

Please refer to the sales consultant for specific plot details as the illustrations shown are computer generated impressions of how the property may look so are indicative only. External details or finishes may vary on individual plots and homes may be built in either detached or attached styles depending on the development layout. Exact specifications, window styles and whether a property is left or right handed may differ from plot to plot.

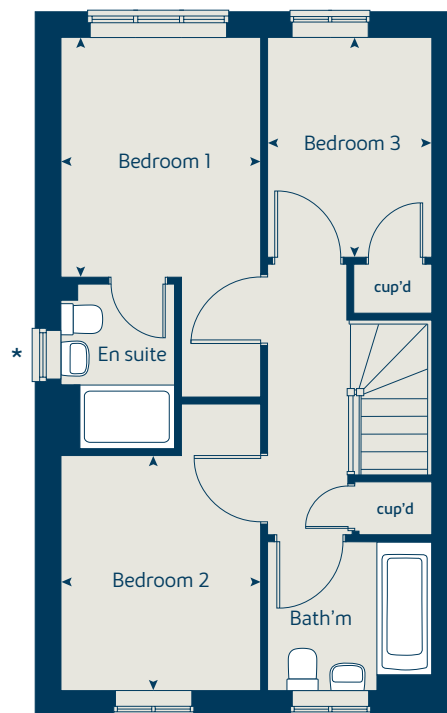
The floorplans shown are not to scale. Measurements are based on the original drawings. Slight variations may occur during construction.

Produced by the Vistry Group Design Studio.

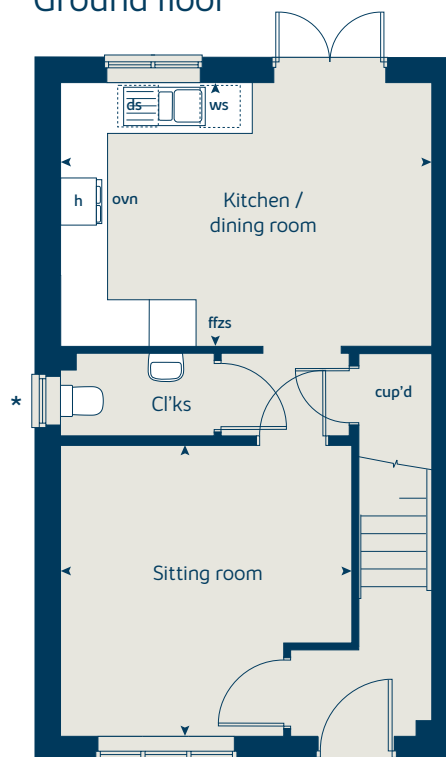
When you have finished with this leaflet please recycle it.

WWITY GD55097 / 09.20

First floor



Ground floor



MIX
Paper from
responsible sources
FSC® C014177



The Hazel

3 bedroom home

bovishomes.co.uk

**Bovis
Homes** 

The Hazel

3 bedroom home

Ground floor	metres	feet / inches
Kitchen / dining room	5.19 x 2.99	17' 0" x 9' 9"
Sitting room	4.17 x 3.66	13' 8" x 12' 0"

First floor

Bedroom 1	3.54 x 2.97	11' 7" x 9' 8"
Bedroom 2	3.04 x 2.95	9' 11" x 9' 8"
Bedroom 3	2.44 x 2.15	8' 0" x 7' 0"

The Hazel | X305 P5 vt WWITY |

This floorplan has been produced for illustrative purposes only. Room sizes shown are between arrow points as indicated on plan. The dimensions have tolerances of + or -50mm and should not be used other than for general guidance. If specific dimensions are required, enquiries should be made to the sales consultant.

* Bay window applies to selected plots only. Please see sales consultant for further details.

ovn	oven	ffzs	fridge freezer space
h	hob	cup'd	cupboard
ds	dishwasher space	◀ ▶	measuring points
ws	washing machine space		

Please refer to the sales consultant for specific plot details as the illustrations shown are computer generated impressions of how the property may look so are indicative only. External details or finishes may vary on individual plots and homes may be built in either detached or attached styles depending on the development layout. Exact specifications, window styles and whether a property is left or right handed may differ from plot to plot.

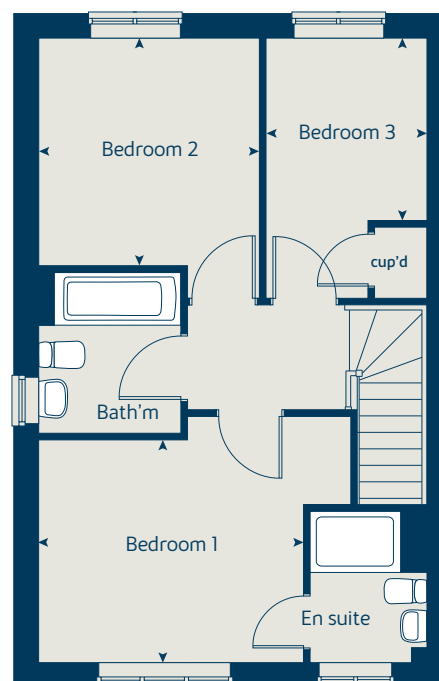
The floorplans shown are not to scale. Measurements are based on the original drawings. Slight variations may occur during construction.

Produced by the Vistry Group Design Studio.

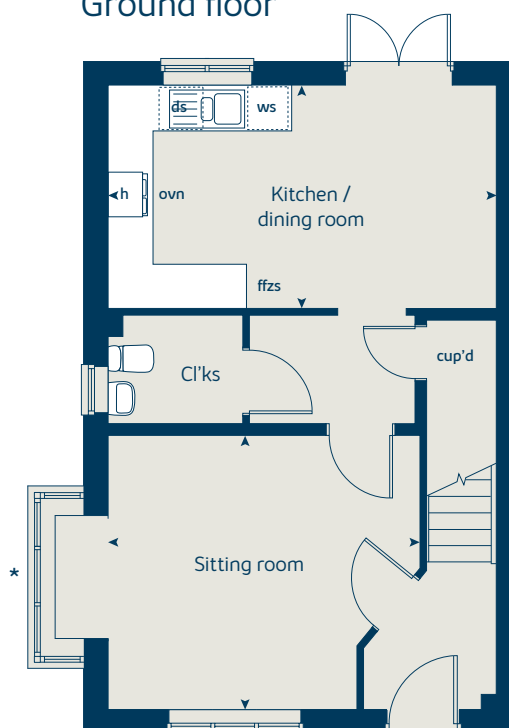
When you have finished with this leaflet please recycle it.

WWITY GD55097 / 09.20

First floor



Ground floor





The Spruce

3 bedroom home

bovishomes.co.uk

**Bovis
Homes** 

The Spruce

3 bedroom home

Ground floor	metres	feet / inches
Kitchen	3.23 x 2.69	10' 7" x 8' 9"
Dining area	3.14 x 2.30	10' 3" x 7' 6"
Sitting room	5.53 x 3.32	18' 1" x 10' 10"

First floor

Bedroom 1	3.39 x 3.33	11' 1" x 10' 11"
Bedroom 2	3.61 x 3.18	11' 10" x 10' 5"
Bedroom 3	3.61 x 2.25	11' 10" x 7' 4"

The Spruce | X307 (IF) P6 Ph5 WWITY |

This floorplan has been produced for illustrative purposes only. Room sizes shown are between arrow points as indicated on plan. The dimensions have tolerances of + or - 50mm and should not be used other than for general guidance. If specific dimensions are required, enquiries should be made to the sales consultant.

* Windows and door to utility applies to selected plots only. Please see sales consultant for further details.

ovn	oven	ffzs	fridge freezer space
h	hob	cup'd	cupboard
ds	dishwasher space	◀ ▶	measuring points
ws	washing machine space		

Please refer to the sales consultant for specific plot details as the illustrations shown are computer generated impressions of how the property may look so are indicative only. External details or finishes may vary on individual plots and homes may be built in either detached or attached styles depending on the development layout. Exact specifications, window styles and whether a property is left or right handed may differ from plot to plot.

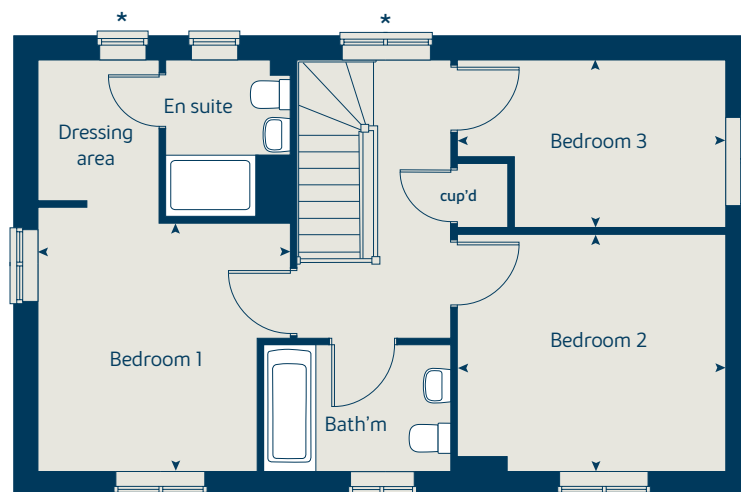
The floorplans shown are not to scale. Measurements are based on the original drawings. Slight variations may occur during construction.

Produced by the Vistry Group Design Studio.

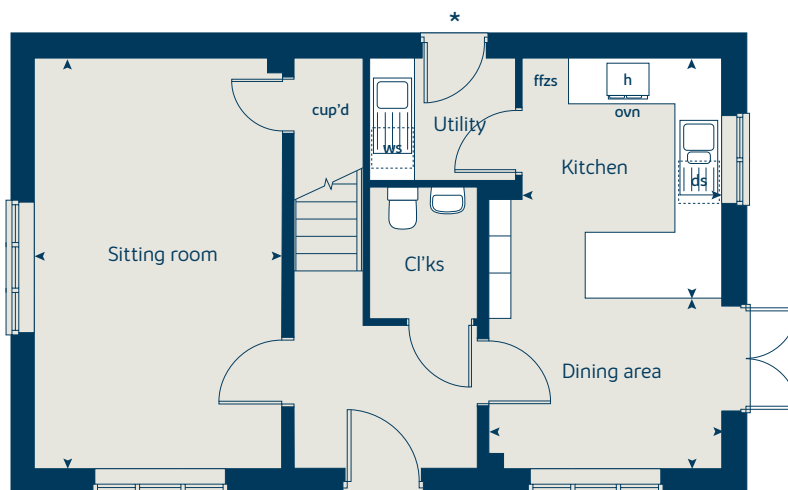
When you have finished with this leaflet please recycle it.

WWITY GD55097 / 09.20

First floor



Ground floor



MIX
Paper from
responsible sources
FSC® C014177



The Cypress

3 bedroom home

bovishomes.co.uk

**Bovis
Homes** 

The Cypress

3 bedroom home

Ground floor	metres	feet / inches
Kitchen / dining area	5.52 x 3.12	18' 1" x 10' 2"
Sitting room	3.74 x 3.40	12' 3" x 11' 1"

First floor

Bedroom 1	3.43 x 3.28	11' 3" x 10' 9"
Bedroom 2	3.28 x 2.84	10' 9" x 9' 4"
Bedroom 3	3.52 x 2.16	11' 7" x 7' 1"

The Cypress | X308 (IF) 01 PH5 WWITY |

This floorplan has been produced for illustrative purposes only. Room sizes shown are between arrow points as indicated on plan. The dimensions have tolerances of + or -50mm and should not be used other than for general guidance. If specific dimensions are required, enquiries should be made to the sales consultant.

ovn	oven	ffzs	fridge freezer space
h	hob	cup'd	cupboard
ds	dishwasher space	◀ ▶	measuring points
ws	washing machine space		

Please refer to the sales consultant for specific plot details as the illustrations shown are computer generated impressions of how the property may look so are indicative only. External details or finishes may vary on individual plots and homes may be built in either detached or attached styles depending on the development layout. Exact specifications, window styles and whether a property is left or right handed may differ from plot to plot.

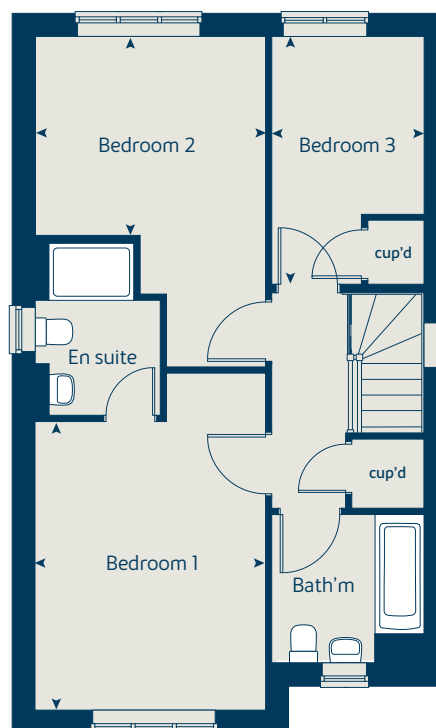
The floorplans shown are not to scale. Measurements are based on the original drawings. Slight variations may occur during construction.

Produced by the Vistry Group Design Studio.

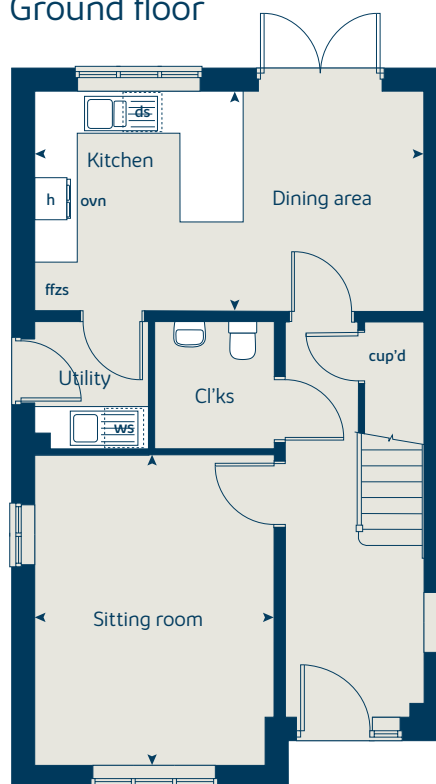
When you have finished with this leaflet please recycle it.

WWITY GD57376 / 10.20

First floor



Ground floor





The Juniper

4 bedroom home

bovishomes.co.uk

**Bovis
Homes** 

The Juniper

4 bedroom home

Ground floor	metres	feet / inches
Kitchen / dining / family area	7.21 x 3.51	23' 7" x 11' 6"
Sitting room	4.55 x 3.04	14' 7" x 10' 0"
Study	2.34 x 1.85	7' 8" x 6' 0"

First floor

Bedroom 1	4.66 x 3.05	15' 3" x 10' 0"
Bedroom 2	2.97 x 2.84	9' 8" x 9' 3"
Bedroom 3	3.60 x 2.38	11' 9" x 7' 9"
Bedroom 4	3.51 x 2.38	11' 6" x 7' 9"

The Juniper | X412 P4 PH5 WWITY |

This floorplan has been produced for illustrative purposes only. Room sizes shown are between arrow points as indicated on plan. The dimensions have tolerances of + or -50mm and should not be used other than for general guidance. If specific dimensions are required, enquiries should be made to the sales consultant.

ovn	oven	ffzr	fridge freezer
h	hob	w	wardrobe
ds	dishwasher space	cup'd	cupboard
ws	washing machine space	◀ ▶	measuring points

Please refer to the sales consultant for specific plot details as the illustrations shown are computer generated impressions of how the property may look so are indicative only. External details or finishes may vary on individual plots and homes may be built in either detached or attached styles depending on the development layout. Exact specifications, window styles and whether a property is left or right handed may differ from plot to plot.

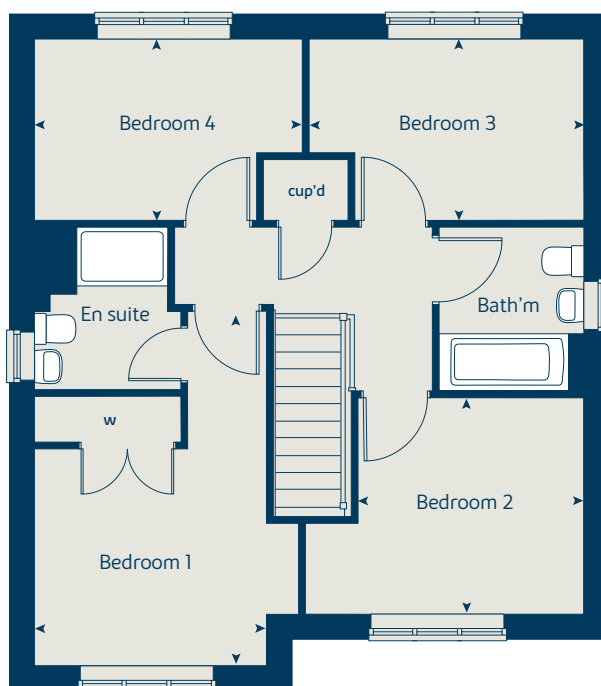
The floorplans shown are not to scale. Measurements are based on the original drawings. Slight variations may occur during construction.

Produced by the Vistry Group Design Studio.

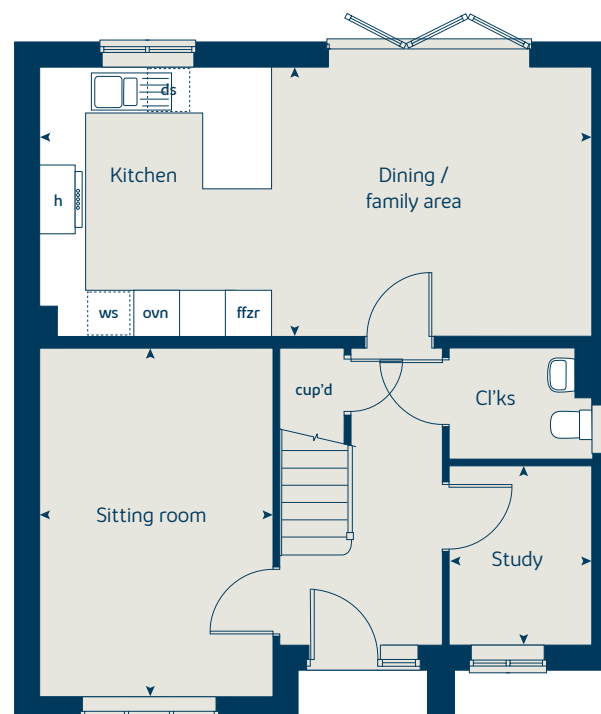
When you have finished with this leaflet please recycle it.

WWITY GD55097 / 09.20

First floor



Ground floor





The Chestnut II

4 bedroom home

bovishomes.co.uk

**Bovis
Homes** 

The Chestnut II

4 bedroom home

Ground floor	metres	feet / inches
Kitchen	4.59 x 2.85	15' 0" x 9' 4"
Dining area	4.03 x 3.04	13' 2" x 9' 11"
Sitting room	4.98 x 3.40	16' 4" x 11' 1"
Study	3.40 x 1.81	11' 1" x 5' 11"

First floor

Bedroom 1	4.50 x 2.98	14' 9" x 9' 8"
Bedroom 2	3.48 x 3.36	11' 5" x 11' 0"
Bedroom 3	3.42 x 2.34	11' 2" x 7' 8"
Bedroom 4	3.25 x 2.35	10' 7" x 7' 8"

The Chestnut II | X413 P5 PH5 WWITY |

This floorplan has been produced for illustrative purposes only. Room sizes shown are between arrow points as indicated on plan. The dimensions have tolerances of + or -50mm and should not be used other than for general guidance. If specific dimensions are required, enquiries should be made to the sales consultant.

ovn	oven	ffzr	fridge freezer
h	hob	w	wardrobe
ds	dishwasher space	cup'd	cupboard
ws	washing machine space	◀ ▶	measuring points

Please refer to the sales consultant for specific plot details as the illustrations shown are computer generated impressions of how the property may look so are indicative only. External details or finishes may vary on individual plots and homes may be built in either detached or attached styles depending on the development layout. Exact specifications, window styles and whether a property is left or right handed may differ from plot to plot.

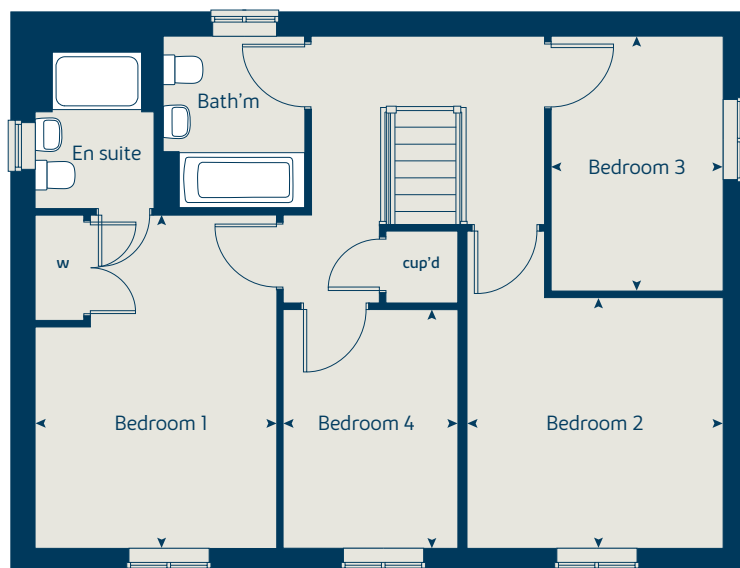
The floorplans shown are not to scale. Measurements are based on the original drawings. Slight variations may occur during construction.

Produced by the Vistry Group Design Studio.

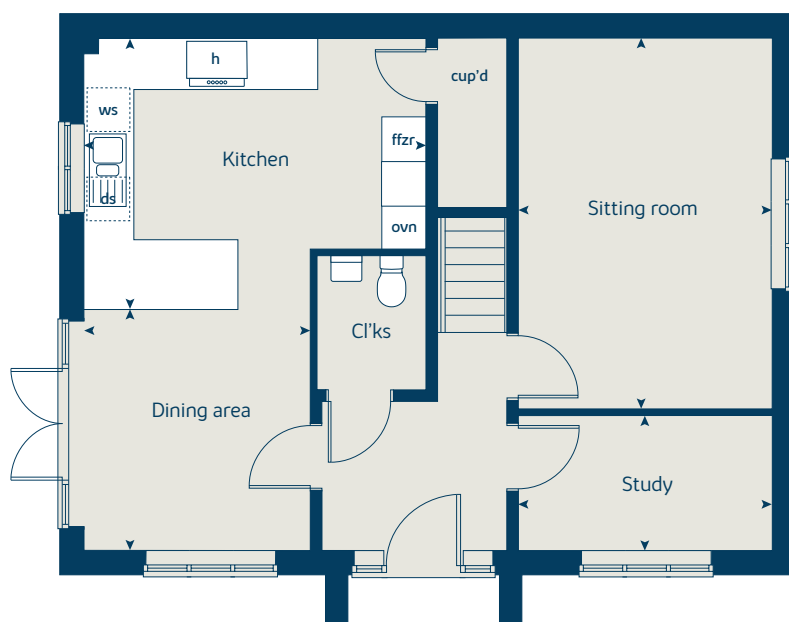
When you have finished with this leaflet please recycle it.

WWITY GD55097 / 09.20

First floor



Ground floor





The Aspen

4 bedroom home

bovishomes.co.uk

**Bovis
Homes** 

The Aspen

4 bedroom home

Ground floor	metres	feet / inches
Kitchen / dining area	7.77 x 3.37	25' 6" x 11' 0"
Sitting room	5.04 x 3.39	16' 6" x 11' 1"
Study	2.01 x 2.01	6' 7" x 6' 7"

First floor

Bedroom 1	4.50 x 2.68	14' 9" x 9' 5"
Bedroom 2	3.63 x 3.20	11' 11" x 10' 6"
Bedroom 3	4.07 x 2.45	13' 4" x 8' 0"
Bedroom 4	3.61 x 2.45	11' 10" x 8' 0"

The Aspen | X414 (1F) 01 vt PH5 WWITY |

This floorplan has been produced for illustrative purposes only. Room sizes shown are between arrow points as indicated on plan. The dimensions have tolerances of + or -50mm and should not be used other than for general guidance. If specific dimensions are required, enquiries should be made to the sales consultant.

* Windows apply to selected plots only. Please see sales consultant for further details.

ovn	oven	ffzr	fridge freezer
h	hob	w	wardrobe
ds	dishwasher space	cup'd	cupboard
ws	washing machine space	◀ ▶	measuring points

Please refer to the sales consultant for specific plot details as the illustrations shown are computer generated impressions of how the property may look so are indicative only. External details or finishes may vary on individual plots and homes may be built in either detached or attached styles depending on the development layout. Exact specifications, window styles and whether a property is left or right handed may differ from plot to plot.

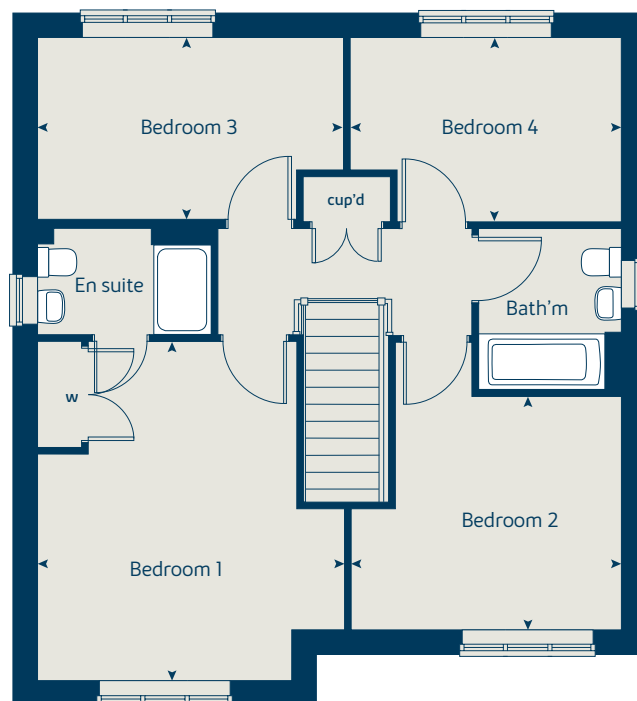
The floorplans shown are not to scale. Measurements are based on the original drawings. Slight variations may occur during construction.

Produced by the Vistry Group Design Studio.

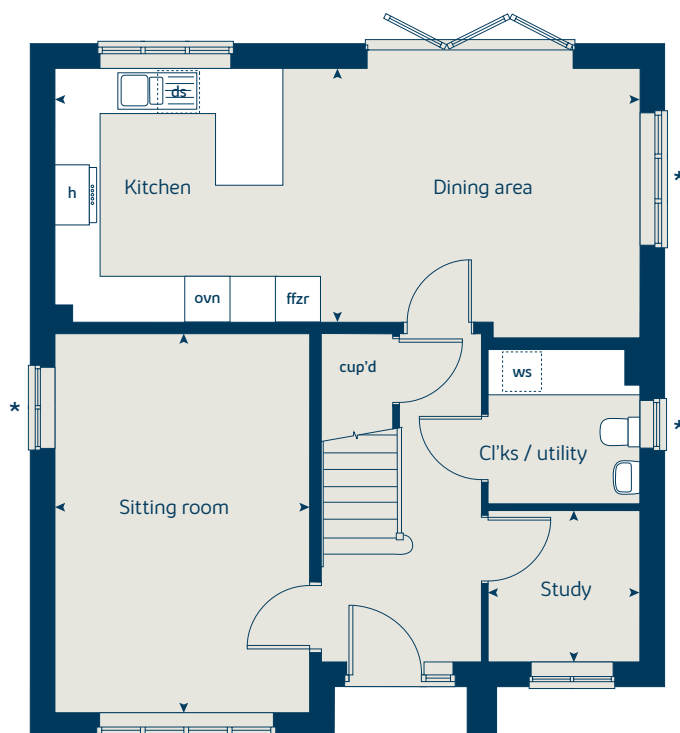
When you have finished with this leaflet please recycle it.

WWITY GD55097 / 09.20

First floor



Ground floor





The Maple

4 bedroom home

bovishomes.co.uk

**Bovis
Homes** 

The Maple

4 bedroom home

Ground floor	metres	feet / inches
Kitchen	3.55 x 3.50	11' 6" x 11' 5"
Family / dining area	7.29 x 3.29	23' 9" x 10' 8"
Sitting room	4.50 x 3.50	14' 9" x 11' 5"
Study	2.50 x 2.29	8' 2" x 7' 6"

First floor

Bedroom 1	6.58 x 3.50	21' 6" x 11' 5"
Bedroom 2	3.68 x 3.57	12' 0" x 11' 5"
Bedroom 3	4.13 x 2.89	13' 7" x 9' 5"
Bedroom 4	2.95 x 2.89	9' 8" x 9' 5"

The Maple | X416 P5 PH5 WWITY |

This floorplan has been produced for illustrative purposes only. Room sizes shown are between arrow points as indicated on plan. The dimensions have tolerances of + or -50mm and should not be used other than for general guidance. If specific dimensions are required, enquiries should be made to the sales consultant.

* Windows apply to selected plots only. Please see sales consultant for further details.

ovn	oven	cyl	hot water cylinder
h	hob	w	wardrobe
dw	dishwasher	cup'd	cupboard
ws	washing machine space	◀ ▶	measuring points
ffzr	fridge freezer		

Please refer to the sales consultant for specific plot details as the illustrations shown are computer generated impressions of how the property may look so are indicative only. External details or finishes may vary on individual plots and homes may be built in either detached or attached styles depending on the development layout. Exact specifications, window styles and whether a property is left or right handed may differ from plot to plot.

The floorplans shown are not to scale. Measurements are based on the original drawings. Slight variations may occur during construction.

Produced by the Vistry Group Design Studio.

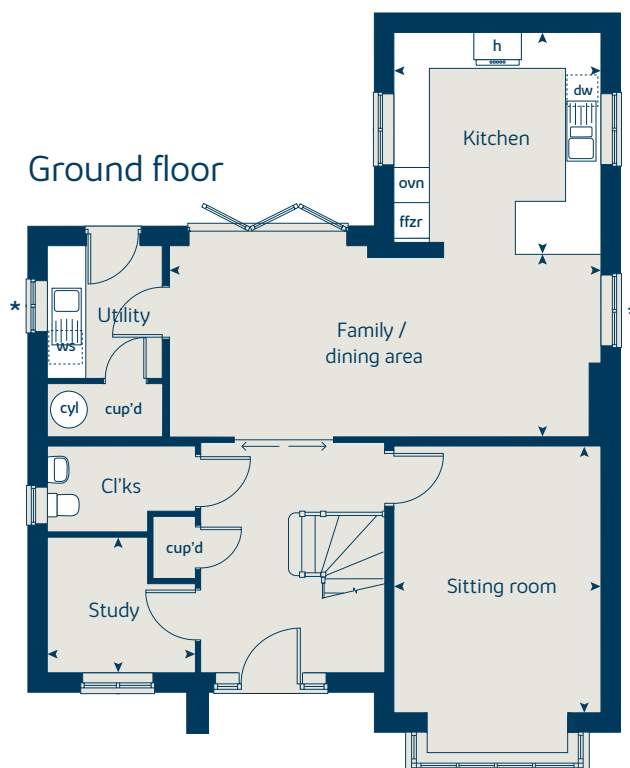
When you have finished with this leaflet please recycle it.

WWITY GD55097 / 09.20

First floor



Ground floor





The Birch

5 bedroom home

bovishomes.co.uk

**Bovis
Homes** 

The Birch

5 bedroom home

Ground floor	metres	feet / inches
Kitchen	3.94 x 3.71	12' 11" x 12' 2"
Family / dining area	5.42 x 3.51	17' 9" x 11' 6"
Sitting room	4.17 x 3.61	13' 8" x 11' 10"
Study / dining room	3.41 x 3.00	11' 2" x 9' 10"

First floor

Bedroom 1	3.62 x 3.51	11' 10" x 11' 6"
Bedroom 2	3.92 x 2.90	12' 9" x 9' 6"
Bedroom 3	3.06 x 2.82	10' 0" x 9' 3"
Bedroom 4	3.30 x 2.80	10' 9" x 9' 2"
Bedroom 5	2.80 x 2.70	9' 2" x 8' 10"

The Birch | X518 WWITY P5 |

This floorplan has been produced for illustrative purposes only. Room sizes shown are between arrow points as indicated on plan. The dimensions have tolerances of + or - 50mm and should not be used other than for general guidance. If specific dimensions are required, enquiries should be made to the sales consultant.

* Windows and utility door applies to selected plots only. Please see sales consultant for further details.

ovn	oven	cyl	hot water cylinder
h	hob	w	wardrobe
dw	dishwasher	cup'd	cupboard
ws	washing machine space	◀ ▶	measuring points
ffzr	fridge freezer		

Please refer to the sales consultant for specific plot details as the illustrations shown are computer generated impressions of how the property may look so are indicative only. External details or finishes may vary on individual plots and homes may be built in either detached or attached styles depending on the development layout. Exact specifications, window styles and whether a property is left or right handed may differ from plot to plot.

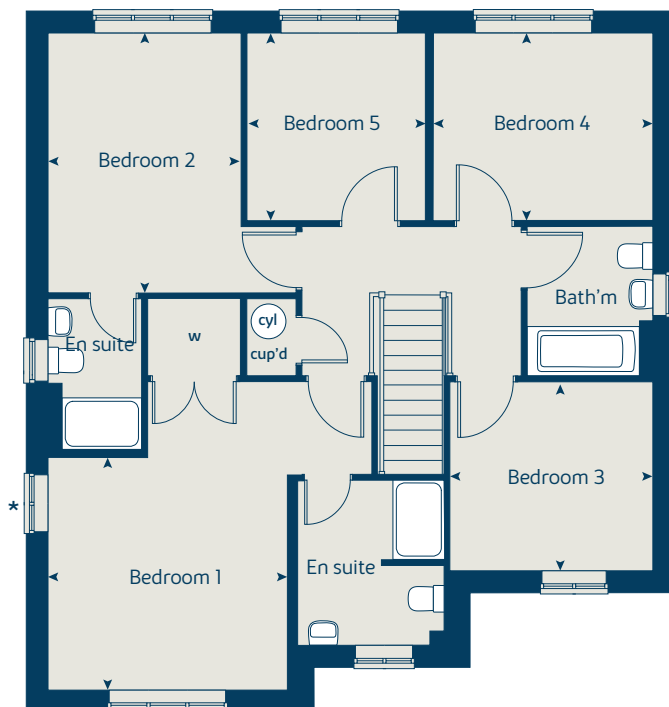
The floorplans shown are not to scale. Measurements are based on the original drawings. Slight variations may occur during construction.

Produced by the Vistry Group Design Studio.

When you have finished with this leaflet please recycle it.

WWITY GD55097 / 09.20

First floor



Ground floor





The Silverbirch

5 bedroom home

bovishomes.co.uk

**Bovis
Homes** 

The Silverbirch

5 bedroom home

Ground floor	metres	feet / inches
Kitchen	3.94 x 3.71	12' 11" x 12' 2"
Family / dining area	5.42 x 3.51	17' 9" x 11' 6"
Sitting room	4.17 x 3.61	13' 8" x 11' 10"
Study / dining room	3.41 x 3.00	11' 2" x 9' 10"

First floor		
Bedroom 1	4.60 x 3.90	15' 3" x 13' 0"
Bedroom 2	3.92 x 2.90	12' 9" x 9' 6"
Bedroom 3	3.06 x 2.82	10' 0" x 9' 3"
Bedroom 4	3.30 x 2.80	10' 9" x 9' 2"
Bedroom 5	2.80 x 2.70	8' 10" x 9' 2"

The Silverbirch | WX5002 WWITY PH5 |

This floorplan has been produced for illustrative purposes only. Room sizes shown are between arrow points as indicated on plan. The dimensions have tolerances of + or -50mm and should not be used other than for general guidance. If specific dimensions are required, enquiries should be made to the sales consultant.

ovn	oven	cyl	hot water cylinder
h	hob	w	wardrobe
dw	dishwasher	cup'd	cupboard
ws	washing machine space	◀ ▶	measuring points
ffzr	fridge freezer		

Please refer to the sales consultant for specific plot details as the illustrations shown are computer generated impressions of how the property may look so are indicative only. External details or finishes may vary on individual plots and homes may be built in either detached or attached styles depending on the development layout. Exact specifications, window styles and whether a property is left or right handed may differ from plot to plot.

The floorplans shown are not to scale. Measurements are based on the original drawings. Slight variations may occur during construction.

Produced by the Vistry Group Design Studio.

When you have finished with this leaflet please recycle it.

WWITY GD55097 / 09.20

First floor



Ground floor





The Cypress II

3 bedroom home

bovishomes.co.uk

**Bovis
Homes** 

The Cypress II

3 bedroom home

Ground floor	metres	feet / inches
Kitchen / dining area	5.52 x 3.12	18' 1" x 10' 2"
Sitting room	3.74 x 3.40	12' 3" x 11' 1"

First floor

Bedroom 1	3.43 x 3.28	11' 3" x 10' 9"
Bedroom 2	3.28 x 2.84	10' 9" x 9' 4"
Bedroom 3	3.52 x 2.16	11' 7" x 7' 1"

The Cypress II | X308 (IF) P7 PH5 WWITY |

This floorplan has been produced for illustrative purposes only. Room sizes shown are between arrow points as indicated on plan. The dimensions have tolerances of + or -50mm and should not be used other than for general guidance. If specific dimensions are required, enquiries should be made to the sales consultant.

ovn	oven	ffzs	fridge freezer space
h	hob	cup'd	cupboard
ds	dishwasher space	◀ ▶	measuring points
ws	washing machine space		

Please refer to the sales consultant for specific plot details as the illustrations shown are computer generated impressions of how the property may look so are indicative only. External details or finishes may vary on individual plots and homes may be built in either detached or attached styles depending on the development layout. Exact specifications, window styles and whether a property is left or right handed may differ from plot to plot.

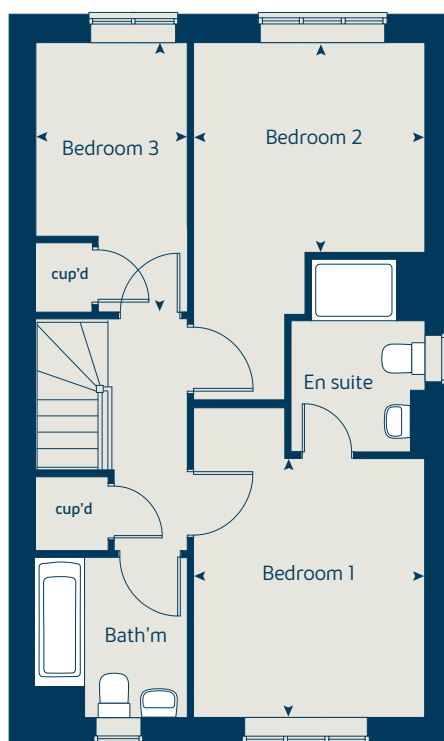
The floorplans shown are not to scale. Measurements are based on the original drawings. Slight variations may occur during construction.

Produced by the Vistry Group Design Studio.

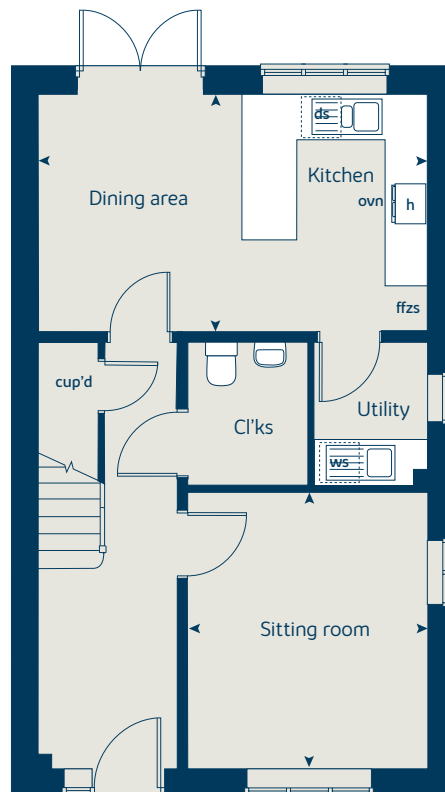
When you have finished with this leaflet please recycle it.

WWITY GD59385 / 05.21

First floor



Ground floor





The Chestnut

4 bedroom home

bovishomes.co.uk

**Bovis
Homes** 

The Chestnut

4 bedroom home

Ground floor	metres	feet / inches
Kitchen	4.03 x 3.04	13' 2" x 9' 11"
Dining / family area	4.59 x 2.85	15' 0" x 9' 4"
Sitting room	4.98 x 3.40	16' 4" x 11' 1"
Study	3.40 x 1.81	11' 1" x 5' 11"

First floor

Bedroom 1	4.50 x 2.98	14' 9" x 9' 8"
Bedroom 2	3.48 x 3.36	11' 5" x 11' 0"
Bedroom 3	3.42 x 2.34	11' 2" x 7' 8"
Bedroom 4	3.25 x 2.35	10' 7" x 7' 8"

The Chestnut | X413 P5 PH5 WWITY |

This floorplan has been produced for illustrative purposes only. Room sizes shown are between arrow points as indicated on plan. The dimensions have tolerances of + or -50mm and should not be used other than for general guidance. If specific dimensions are required, enquiries should be made to the sales consultant.

ovn	oven	ffzr	fridge freezer
h	hob	w	wardrobe
ds	dishwasher space	cup'd	cupboard
ws	washing machine space	◀ ▶	measuring points

Please refer to the sales consultant for specific plot details as the illustrations shown are computer generated impressions of how the property may look so are indicative only. External details or finishes may vary on individual plots and homes may be built in either detached or attached styles depending on the development layout. Exact specifications, window styles and whether a property is left or right handed may differ from plot to plot.

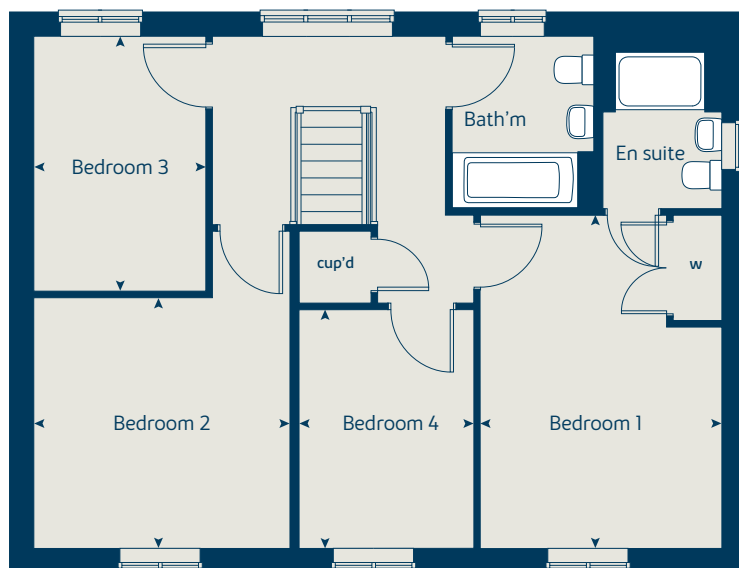
The floorplans shown are not to scale. Measurements are based on the original drawings. Slight variations may occur during construction.

Produced by the Vistry Group Design Studio.

When you have finished with this leaflet please recycle it.

WWITY GD59385 / 05.21

First floor



Ground floor

