



Collingtree Park

Northampton - Phase 2a



Our name has been synonymous with building since 1885, when Charles William Bovis bought a construction company in the London Borough of Marylebone and changed its name to CW Bovis & Co.

From those foundations has grown a Bovis heritage to be proud of, including quality homes and communities across Britain.

Welcome to Collingtree Park

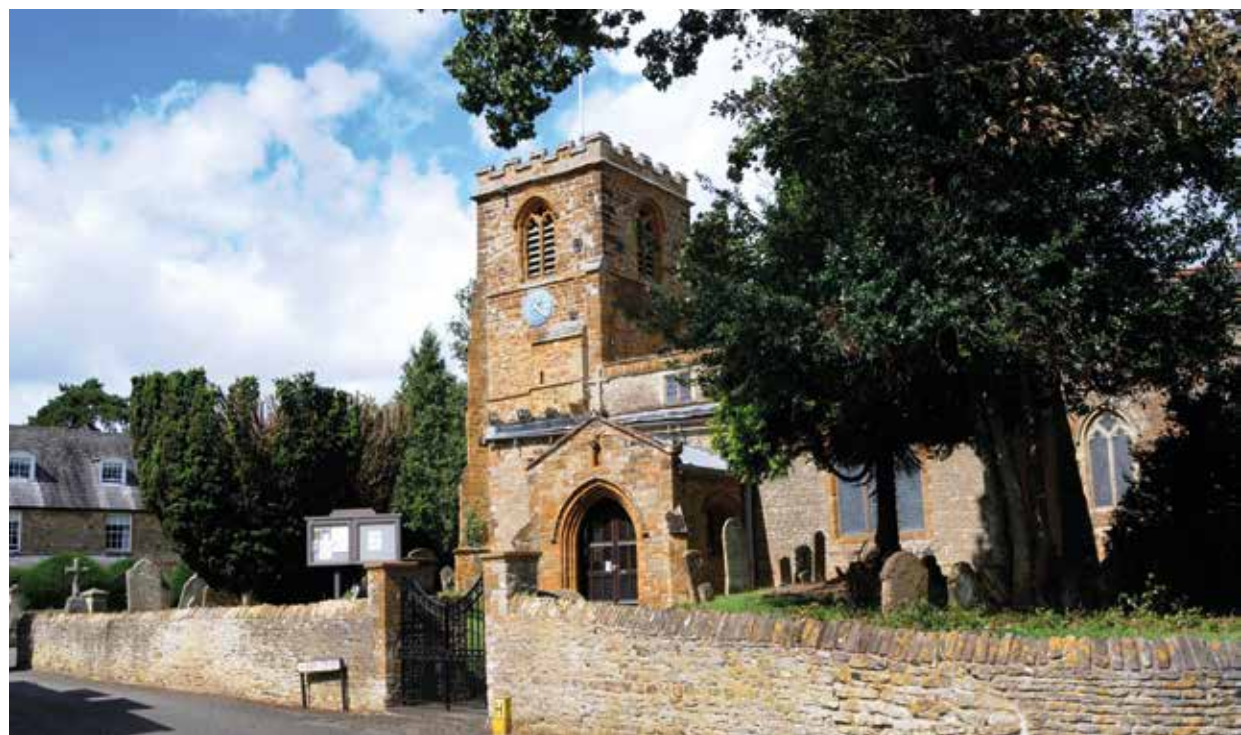
The next phase of our stunning development includes brand new 3, 4, 5, 6 and 7 bedroom family homes and is enviably located in a highly sought after area, adjacent to the golf course.

Collingtree Park enjoys beautiful countryside views whilst also being less than 5 miles to the centre of Northampton, the perfect combination of urban life and peaceful countryside.









A taste of local life

Collingtree is a beautiful Northamptonshire village surrounded by stunning countryside. The village has a real sense of community and the golf course is at the heart of the picturesque location.

Location

Collingtree Park is located on the desirable south side of Northampton, which is a very sought-after location. 4 miles will take you directly to the centre of the town, while access to the M1 is less than 2 miles from the development. Collingtree Park's ideal location means that Milton Keynes and Daventry are less than 16 miles away, while Towcester is just 10 miles away.

Northampton runs regular trains directly into London Euston taking around an hour. Alternatively, a drive to Milton Keynes will mean you can take a train that will get you into the City in less than 40 minutes. Heading north, the train takes about 1 hour 10 mins to Birmingham New Street and just under an hour to Birmingham International Airport.

Entertainment and leisure

About one mile away from Collingtree Park is a Tesco Express for all essentials, while two miles away in Wootton you'll find a Waitrose, and a Tesco Extra store. Northampton town centre offers a great mix of national retailers, smaller independents and several designer boutiques, as well as weekly general markets and a monthly farmers market. The Grosvenor Shopping Centre has more than 60 stores and the town also offers well-known outlets at Nene Valley Retail Park.

You'll discover many things to do nearby to keep the whole family entertained, including stately homes, Michelin star restaurants and theatres. You can unwind at a spa or stay active with tennis, golf or cricket. The Hilton Health Club and Virgin Active both have great facilities, from a swimming pool and spa to a well-equipped gym. There is a pub and a restaurant in the village and many popular pubs and bars in the town of Northampton. At weekends, explore the countryside with many great walks close by and the Grand Union Canal is just a stone's throw away.


Education

Collingtree has a Church of England Primary School which is only half a mile away. It caters for pupils from reception to year six. For senior pupils there is Caroline Chisholm School two miles away at Wootton, or Northampton High School for girls is two and a half miles away. There are also several other local state and independent schools for children of all ages in the surrounding area.

Development layout

Phase 2a of Collingtree Park boasts a stunning range of three to seven bedroom homes each with unique views and aspects. Discover your dream home today.



 **The Oakwood**
6/7 bedroom home



 **The Oak**
6 bedroom home



 **The Lime**
5 bedroom home



 **The Birch**
5 bedroom home



 **The Redwood**
5 bedroom home



 **The Maple**
4 bedroom home



 **The Aspen**
4 bedroom home




 **The Chestnut**
4 bedroom home



 **The Rosewood**
4 bedroom home



 **The Beech**
3 bedroom home



 **The Winchcombe**
3 bedroom home



 **The Cypress**
3 bedroom home






 **The Spruce**
3 bedroom home



 **The Rowan**
3 bedroom home

Pre-sold homes

-  2 bedroom homes
-  3 bedroom homes
-  4 bedroom homes

v visitor space
lap local area of play

The plan overleaf has been produced for home identification purposes only and is not to scale. The development layout, landscaping and tenure of all dwellings may be subject to change throughout the course of the development. Finishes and materials may vary from those shown on the plan. Please check the details of your chosen plot and house type with the sales consultant. Development layout plan correct at time of production.



Open space

Proposed
future
development

Proposed
local centre

Future development
by Bovis Homes and
Linden Homes

Development
by Linden Homes

Balancing
feature

Ebenezer Avenue

Ebenezer Avenue

Ebenezer Avenue

Haversham Way

Cratchit Crescent

Cratchit Crescent

Watmill Way

Collingtree Park Phase 1

Collingtree Park Golf Club - Hole 2

The Oakwood

6/7 bedroom home

Ground floor	metres	feet / inches
Kitchen / dining / family	10.81 x 3.99	35' 6" x 13' 1"
Sitting room	6.80 x 4.06	22' 4" x 13' 4"
Dining room / study	4.06 x 3.82	13' 4" x 12' 5"

First floor	metres	feet / inches
Bedroom 1	5.03 x 4.06	16' 6" x 13' 4"
Bedroom 2	4.17 x 4.06	13' 6" x 13' 4"
Bedroom 3	4.07 x 3.23	13' 3" x 10' 7"
Bedroom 4	4.35 x 3.23	14' 4" x 8' 2"

Second floor	metres	feet / inches
Bedroom 5	5.74 x 4.06	18' 10" x 13' 4"
Bedroom 6 / home cinema / games / media room	9.52 x 4.12	31' 3" x 13' 6"

Garage first floor	metres	feet / inches
Bedroom 7 / guest annexe	7.74 x 4.25	25' 3" x 13' 9"

ovn

h

dw

ws

ts

oven

hob

dishwasher

washing machine space

tumble dryer space

ffzr

cyl

cup'd

measuring points

fridge freezer

hot water cylinder

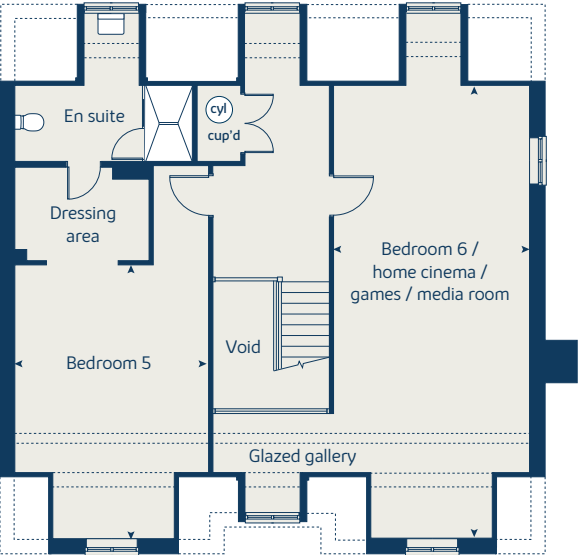
cupboard

The Oakwood | X531VT CCOLG Phase 2a |

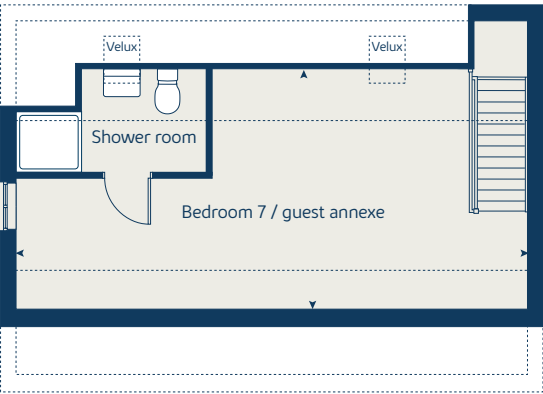
The floorplan has been produced for illustrative purposes only. Room sizes shown are between arrow points as indicated on plan. The dimensions have tolerances of + or -50mm and should not be used other than for general guidance. If specific dimensions are required, enquiries should be made to the sales consultant. The floor plans shown are not to scale. Measurements are based on the original drawings. Slight variations may occur during construction.

The illustrations shown are computer generated impressions of how the property may look and are indicative only. External details or finishes may vary on individual plots and homes may be built in either detached or attached styles depending on the development layout. Exact specifications, window styles and whether a property is left or right handed may differ from plot to plot. Please speak to our sales consultant for specific plot details.

Second floor



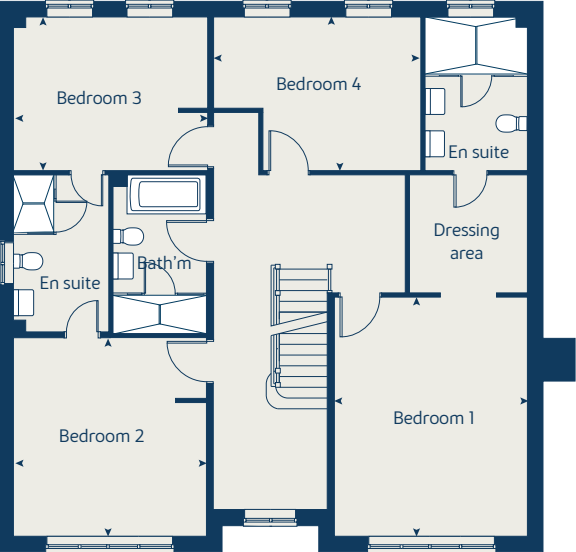
Garage first floor *excluding plot 388*



Ground floor



First floor



Please refer to the sales consultant for specific plot details as the illustrations shown are computer generated impressions of how the property may look so are indicative only. External details or finishes may vary on individual plots and homes may be built in either detached or attached styles depending on the development layout. Exact specifications, window styles and whether a property is left or right handed may differ from plot to plot. The floorplans shown are not to scale. Measurements are based on the original drawings. Slight variations may occur during construction.

Floor area: 343 sq m | 3,709 sq ft
(including guest annexe)



The Oak

6 bedroom home

Ground floor	metres	feet / inches
Kitchen / family / dining	8.29 x 5.09	27' 2" x 16' 8"
Sitting room	5.70 x 4.06	18' 9" x 13' 4"
Dining room	4.06 x 3.05	13' 4" x 10' 0"
Study	4.50 x 2.39	14' 9" x 7' 10"

First floor	metres	feet / inches
Bedroom 1	7.04 x 4.09	23' 0" x 13' 5"
Bedroom 2	4.37 x 3.40	14' 4" x 11' 2"
Bedroom 3	4.13 x 3.15	13' 7" x 10' 4"
Bedroom 4	3.19 x 2.32	10' 6" x 7' 7"
Bedroom 5	3.19 x 2.34	10' 6" x 7' 8"

Garage first floor	metres	feet / inches
Bedroom 6 / guest annexe	7.74 x 4.25	25' 3" x 13' 9"

ovn	oven	ffzr	fridge freezer
h	hob	ts	tumble dryer space
dw	dishwasher	cyl	hot water cylinder
ws	washing machine space	cup'd	cupboard
ldr	larder	◀ ▶	measuring points

The Oak | X531 CCOLG Phase 2 |
 The floorplan has been produced for illustrative purposes only. Room sizes shown are between arrow points as indicated on plan. The dimensions have tolerances of + or -50mm and should not be used other than for general guidance. If specific dimensions are required, enquiries should be made to the sales consultant. The floor plans shown are not to scale. Measurements are based on the original drawings. Slight variations may occur during construction.

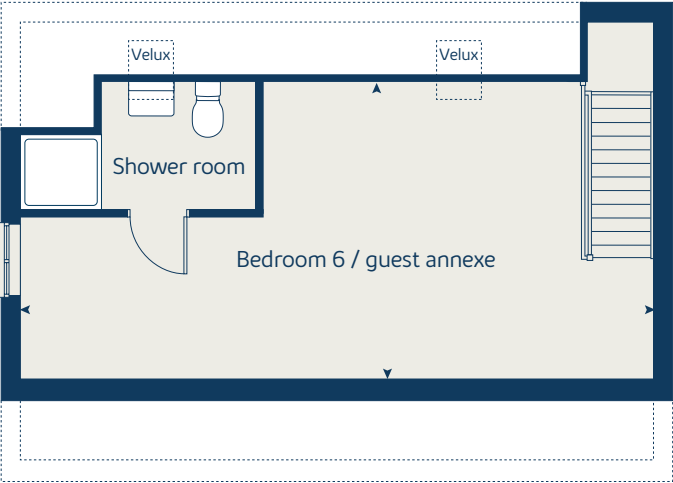
The illustrations shown are computer generated impressions of how the property may look and are indicative only. External details or finishes may vary on individual plots and homes may be built in either detached or attached styles depending on the development layout. Exact specifications, window styles and whether a property is left or right handed may differ from plot to plot. Please speak to our sales consultant for specific plot details.

* Window applies to selected plots only. Please see sales consultant for further details.

Ground floor



Garage first floor



First floor



Please refer to the sales consultant for specific plot details as the illustrations shown are computer generated impressions of how the property may look so are indicative only. External details or finishes may vary on individual plots and homes may be built in either detached or attached styles depending on the development layout. Exact specifications, window styles and whether a property is left or right handed may differ from plot to plot. The floorplans shown are not to scale. Measurements are based on the original drawings. Slight variations may occur during construction.

Floor area: 259 sq m | 2,797 sq ft



The Lime

5 bedroom home

Ground floor	metres	feet / inches
Kitchen / family / dining	7.69 x 3.58	25' 2" x 11' 9"
Sitting room	5.39 x 3.86	17' 8" x 12' 8"
Dining room	3.86 x 2.77	12' 8" x 9' 1"
Study	3.58 x 2.54	11' 9" x 8' 4"

First floor	metres	feet / inches
Bedroom 1	4.05 x 3.75	13' 4" x 12' 4"
Bedroom 2	4.05 x 3.52	13' 4" x 11' 7"
Bedroom 3	3.26 x 3.23	10' 9" x 10' 7"
Bedroom 4	3.54 x 2.25	11' 8" x 7' 5"
Bedroom 5	2.86 x 2.64	9' 5" x 8' 8"

ovn	oven	cyl	hot water cylinder
h	hob	ldr	larder
dw	dishwasher	tds	tumble dryer space
ws	washing machine space	cup'd	cupboard
ffzr	fridge freezer	◀ ▶	measuring points

The Lime | X520 (IF) 02 CCOLG |

The floorplan has been produced for illustrative purposes only. Room sizes shown are between arrow points as indicated on plan. The dimensions have tolerances of + or -50mm and should not be used other than for general guidance. If specific dimensions are required, enquiries should be made to the sales consultant. The floor plans shown are not to scale. Measurements are based on the original drawings. Slight variations may occur during construction.

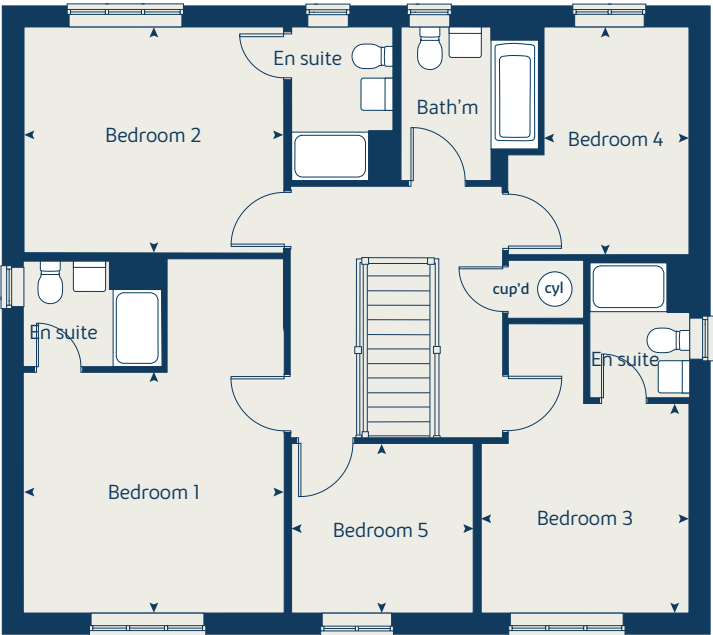
The illustrations shown are computer generated impressions of how the property may look and are indicative only. External details or finishes may vary on individual plots and homes may be built in either detached or attached styles depending on the development layout. Exact specifications, window styles and whether a property is left or right handed may differ from plot to plot. Please speak to our sales consultant for specific plot details.

* Window applies to selected plots only. Please see sales consultant for further details.

Ground floor



First floor



Please refer to the sales consultant for specific plot details as the illustrations shown are computer generated impressions of how the property may look so are indicative only. External details or finishes may vary on individual plots and homes may be built in either detached or attached styles depending on the development layout. Exact specifications, window styles and whether a property is left or right handed may differ from plot to plot. The floorplans shown are not to scale. Measurements are based on the original drawings. Slight variations may occur during construction.

Floor area: 192 sq m | 2,066 sq ft



The Birch

5 bedroom home

Ground floor	metres	feet / inches
Kitchen	4.54 x 3.33	14' 11" x 10' 11"
Family / dining area	5.79 x 3.52	19' 0" x 11' 7"
Sitting room	4.30 x 3.61	14' 1" x 11' 10"
Study / dining room	3.41 x 3.00	11' 3" x 9' 10"

First floor	metres	feet / inches
Bedroom 1	3.61 x 3.51	11' 10" x 11' 6"
Bedroom 2	3.92 x 2.91	12' 10" x 9' 7"
Bedroom 3	3.06 x 2.75	10' 1" x 9' 0"
Bedroom 4	3.31 x 2.83	10' 10" x 9' 3"
Bedroom 5	2.83 x 2.69	9' 3" x 8' 10"

ovn	oven	ldr	larder
h	hob	tds	tumble dryer space
dw	dishwasher	cyl	hot water cylinder
ws	washing machine space	cup'd	cupboard
ffzr	fridge freezer	◄ ►	measuring points

The Birch | X518 (IF) 02 CCOLG |
The floorplan has been produced for illustrative purposes only. Room sizes shown are between arrow points as indicated on plan. The dimensions have tolerances of + or -50mm and should not be used other than for general guidance. If specific dimensions are required, enquiries should be made to the sales consultant. The floor plans shown are not to scale. Measurements are based on the original drawings. Slight variations may occur during construction.

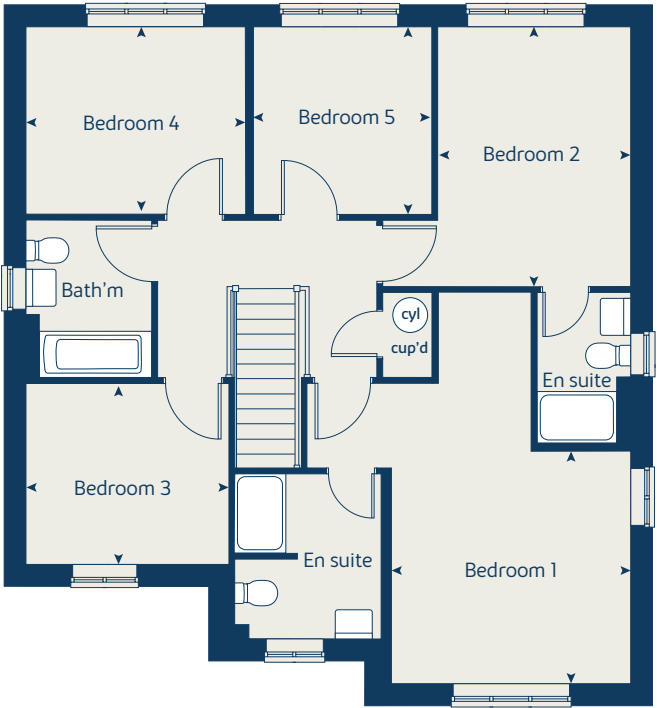
The illustrations shown are computer generated impressions of how the property may look and are indicative only. External details or finishes may vary on individual plots and homes may be built in either detached or attached styles depending on the development layout. Exact specifications, window styles and whether a property is left or right handed may differ from plot to plot. Please speak to our sales consultant for specific plot details.

* Window omitted to selected plots only. Please see sales consultant for further details.

Ground floor



First floor



Please refer to the sales consultant for specific plot details as the illustrations shown are computer generated impressions of how the property may look so are indicative only. External details or finishes may vary on individual plots and homes may be built in either detached or attached styles depending on the development layout. Exact specifications, window styles and whether a property is left or right handed may differ from plot to plot. The floorplans shown are not to scale. Measurements are based on the original drawings. Slight variations may occur during construction.

Floor area: 167 sq m | 1,797 sq ft



The Redwood

5 bedroom home

Ground floor	metres	feet / inches
Kitchen	3.46 x 3.24	11' 3" x 10' 8"
Dining / family area	5.35 x 3.24	17' 5" x 10' 8"
Sitting room	4.28 x 3.39	14' 1" x 11' 1"

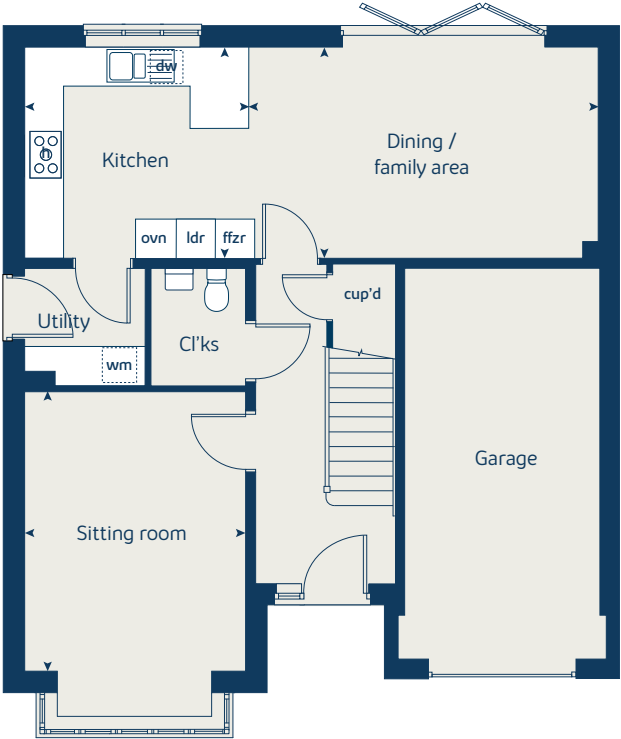
First floor	metres	feet / inches
Bedroom 1	4.11 x 3.39	13' 6" x 11' 1"
Bedroom 2	5.31 x 2.89	17' 5" x 9' 6"
Bedroom 3	3.35 x 2.90	11' 0" x 9' 6"
Bedroom 4	3.03 x 2.93	9' 11" x 9' 7"
Bedroom 5	2.93 x 2.19	9' 7" x 7' 2"

ovn	oven	ffzr	fridge freezer
h	hob	cyl	hot water cylinder
dw	dishwasher	cup'd	cupboard
ws	washing machine space	◀ ▶	measuring points

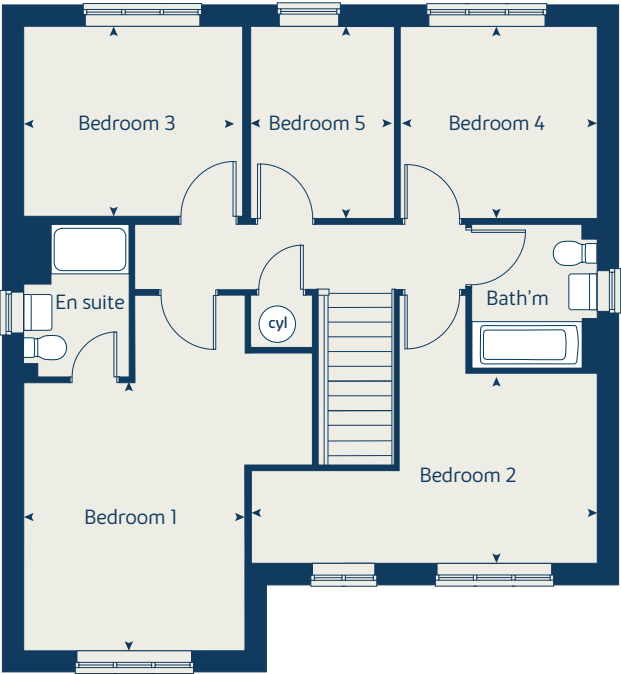
The Redwood | X5415 CCOLG Phase 2a |
 The floorplan has been produced for illustrative purposes only. Room sizes shown are between arrow points as indicated on plan. The dimensions have tolerances of + or -50mm and should not be used other than for general guidance. If specific dimensions are required, enquiries should be made to the sales consultant. The floor plans shown are not to scale. Measurements are based on the original drawings. Slight variations may occur during construction.

The illustrations shown are computer generated impressions of how the property may look and are indicative only. External details or finishes may vary on individual plots and homes may be built in either detached or attached styles depending on the development layout. Exact specifications, window styles and whether a property is left or right handed may differ from plot to plot. Please speak to our sales consultant for specific plot details.

Ground floor



First floor



Please refer to the sales consultant for specific plot details as the illustrations shown are computer generated impressions of how the property may look so are indicative only. External details or finishes may vary on individual plots and homes may be built in either detached or attached styles depending on the development layout. Exact specifications, window styles and whether a property is left or right handed may differ from plot to plot. The floorplans shown are not to scale. Measurements are based on the original drawings. Slight variations may occur during construction.

Floor area: 140 sq m | 1,506 sq ft



The Maple

4 bedroom home

Ground floor	metres	feet / inches
Kitchen	3.75 x 3.50	12' 3" x 11' 6"
Family / dining area	7.28 x 3.08	23' 11" x 10' 10"
Sitting room	4.50 x 3.50	14' 9" x 11' 6"
Study	2.50 x 2.29	8' 3" x 7' 6"

First floor	metres	feet / inches
Bedroom 1	3.60 x 3.50	11' 10" x 11' 6"
Bedroom 2	3.64 x 3.56	11' 11" x 11' 8"
Bedroom 3	4.17 x 2.90	13' 8" x 9' 6"
Bedroom 4	2.95 x 2.90	9' 8" x 9' 6"

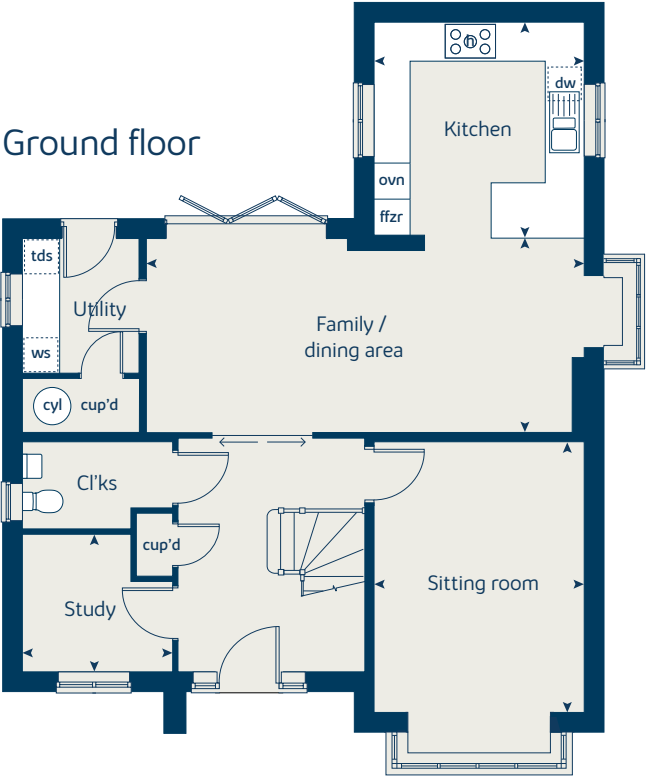
ovn	oven	tds	tumble dryer space
h	hob	cyl	hot water cylinder
dw	dishwasher	cup'd	cupboard
ws	washing machine space	◄ ►	measuring points
ffzr	fridge freezer		

The Maple | X416v2 CCOLG Phase 2 |

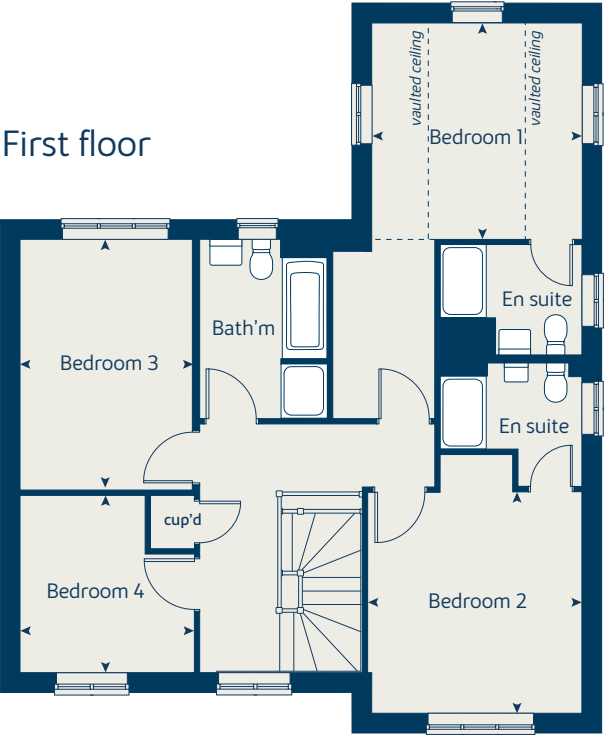
The floorplan has been produced for illustrative purposes only. Room sizes shown are between arrow points as indicated on plan. The dimensions have tolerances of + or -50mm and should not be used other than for general guidance. If specific dimensions are required, enquiries should be made to the sales consultant. The floor plans shown are not to scale. Measurements are based on the original drawings. Slight variations may occur during construction.

The illustrations shown are computer generated impressions of how the property may look and are indicative only. External details or finishes may vary on individual plots and homes may be built in either detached or attached styles depending on the development layout. Exact specifications, window styles and whether a property is left or right handed may differ from plot to plot. Please speak to our sales consultant for specific plot details.

Ground floor



First floor



Please refer to the sales consultant for specific plot details as the illustrations shown are computer generated impressions of how the property may look so are indicative only. External details or finishes may vary on individual plots and homes may be built in either detached or attached styles depending on the development layout. Exact specifications, window styles and whether a property is left or right handed may differ from plot to plot. The floorplans shown are not to scale. Measurements are based on the original drawings. Slight variations may occur during construction.

Floor area: 166 sq m | 1792 sq ft



The Aspen

4 bedroom home

Ground floor	metres	feet / inches
Kitchen / dining area	7.77 x 3.37	25' 6" x 11' 1"
Sitting room	5.04 x 3.39	16' 6" x 11' 1"
Study	2.02 x 2.01	6' 8" x 6' 7"

First floor			
Bedroom 1	4.52 x 3.45	14' 10" x 11' 3"	
Bedroom 2	3.10 x 3.01	10' 2" x 9' 8"	
Bedroom 3	4.07 x 2.42	13' 4" x 7' 11"	
Bedroom 4	3.61 x 2.45	11' 10" x 8' 1"	

ovn	oven	ldr	larder
h		hob	ffzr
ds	dishwasher space	cup'd	cupboard
ws	washing machine space	◀ ▶	measuring points

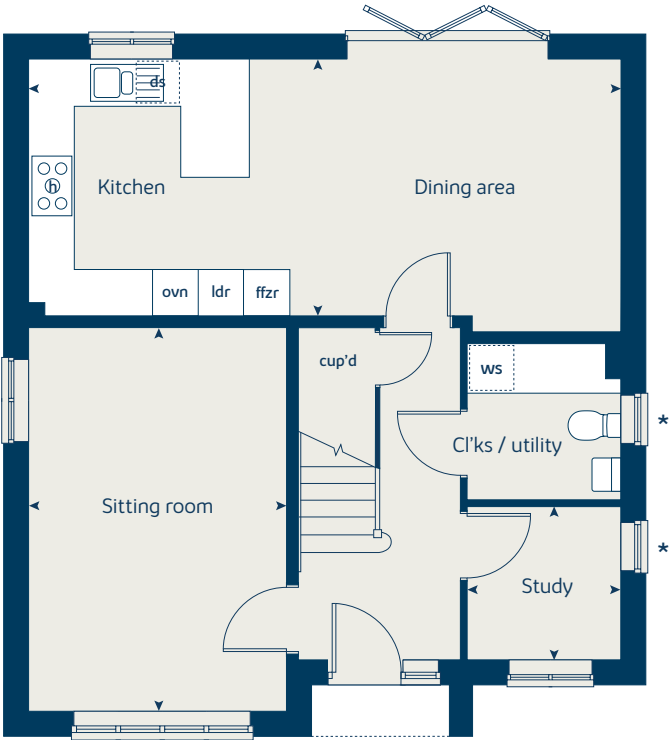
The Aspen | X414v2 CCOLG PH2 |

The floorplan has been produced for illustrative purposes only. Room sizes shown are between arrow points as indicated on plan. The dimensions have tolerances of + or -50mm and should not be used other than for general guidance. If specific dimensions are required, enquiries should be made to the sales consultant. The floor plans shown are not to scale. Measurements are based on the original drawings. Slight variations may occur during construction.

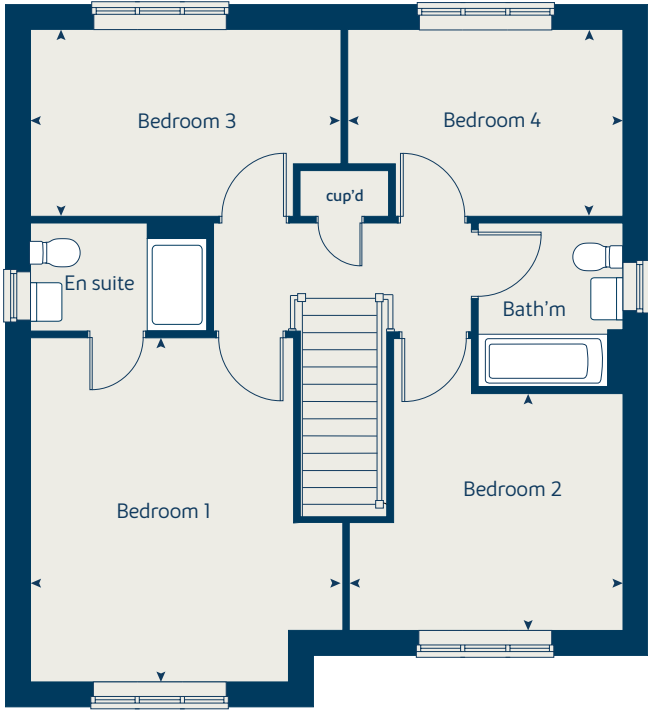
The illustrations shown are computer generated impressions of how the property may look and are indicative only. External details or finishes may vary on individual plots and homes may be built in either detached or attached styles depending on the development layout. Exact specifications, window styles and whether a property is left or right handed may differ from plot to plot. Please speak to our sales consultant for specific plot details.

* Windows applies to selected plots only. Please see sales consultant for further details.

Ground floor



First floor



Please refer to the sales consultant for specific plot details as the illustrations shown are computer generated impressions of how the property may look so are indicative only. External details or finishes may vary on individual plots and homes may be built in either detached or attached styles depending on the development layout. Exact specifications, window styles and whether a property is left or right handed may differ from plot to plot. The floorplans shown are not to scale. Measurements are based on the original drawings. Slight variations may occur during construction.

Floor area: 126 sq m | 1,356 sq ft



The Chestnut

4 bedroom home

Ground floor	metres	feet / inches
Kitchen	3.89 x 3.04	12' 7" x 10' 0"
Dining / family area	4.60 x 2.83	15' 1" x 9' 3"
Sitting room	4.97 x 3.40	16' 4" x 11' 2"
Study	3.40 x 1.81	11' 2" x 5' 11"

First floor		
Bedroom 1	4.47 x 3.24	14' 8" x 10' 8"
Bedroom 2	3.43 x 3.36	11' 3" x 11' 1"
Bedroom 3	3.42 x 2.31	11' 3" x 7' 7"
Bedroom 4	3.20 x 2.35	10' 6" x 7' 9"

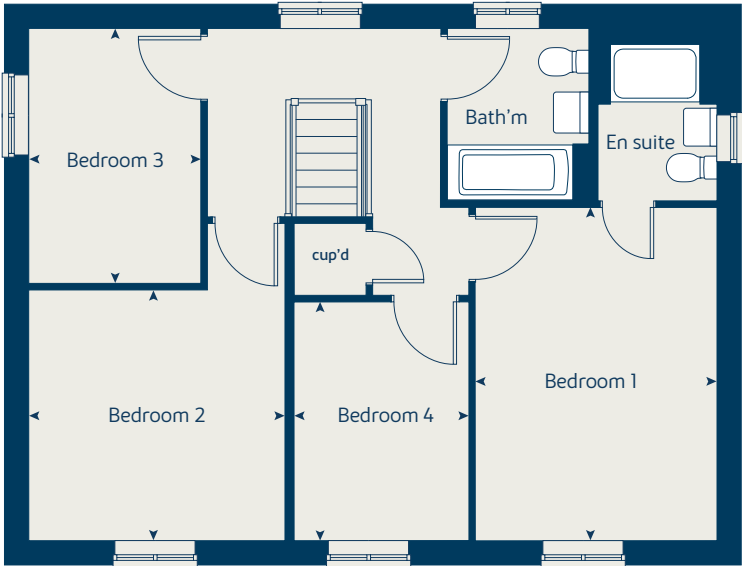
ovn	oven	ffzr	fridge freezer
h	hob	ldr	larder
ds	dishwasher space	cup'd	cupboard
ws	washing machine space	◀ ▶	measuring points

The Chestnut | X413 02 Phase 2 CCOLG |
 The floorplan has been produced for illustrative purposes only. Room sizes shown are between arrow points as indicated on plan. The dimensions have tolerances of + or -50mm and should not be used other than for general guidance. If specific dimensions are required, enquiries should be made to the sales consultant. The floor plans shown are not to scale. Measurements are based on the original drawings. Slight variations may occur during construction.

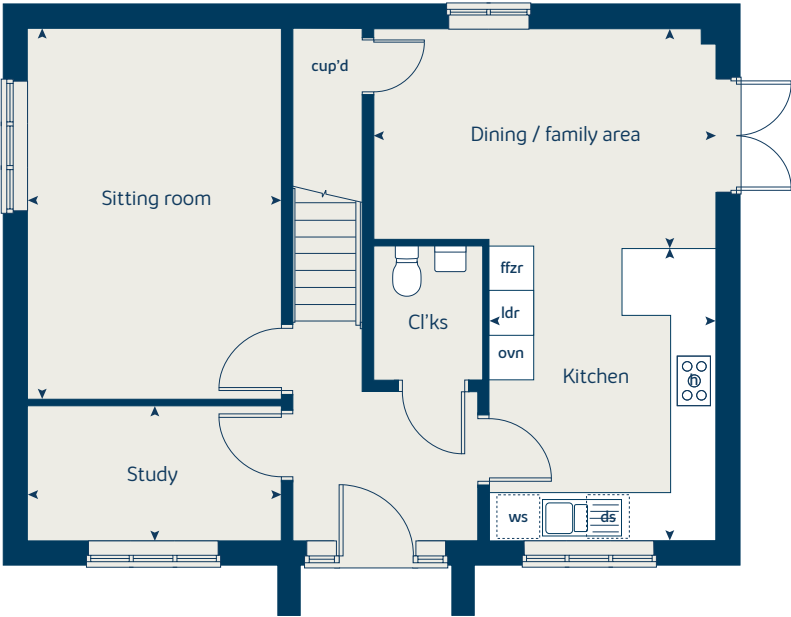
The illustrations shown are computer generated impressions of how the property may look and are indicative only. External details or finishes may vary on individual plots and homes may be built in either detached or attached styles depending on the development layout. Exact specifications, window styles and whether a property is left or right handed may differ from plot to plot. Please speak to our sales consultant for specific plot details.

Wardrobes as standard specification if building to NDSS.

First floor



Ground floor



Please refer to the sales consultant for specific plot details as the illustrations shown are computer generated impressions of how the property may look so are indicative only. External details or finishes may vary on individual plots and homes may be built in either detached or attached styles depending on the development layout. Exact specifications, window styles and whether a property is left or right handed may differ from plot to plot. The floorplans shown are not to scale. Measurements are based on the original drawings. Slight variations may occur during construction.

Floor area: 126 sq m | 1,356 sq ft



The Rosewood

4 bedroom home

Ground floor	metres	feet / inches
Kitchen / dining area	5.52 x 3.57	18' 2" x 11' 9"
Sitting room	4.40 x 3.40	14' 6" x 11' 1"

First floor	metres	feet / inches
Bedroom 1	3.59 x 3.27	11' 10" x 10' 9"
Bedroom 2	3.27 x 2.62	10' 9" x 8' 7"
Bedroom 3	3.52 x 2.16	11' 7" x 7' 1"
Bedroom 4	2.55 x 2.16	8' 5" x 7' 1"

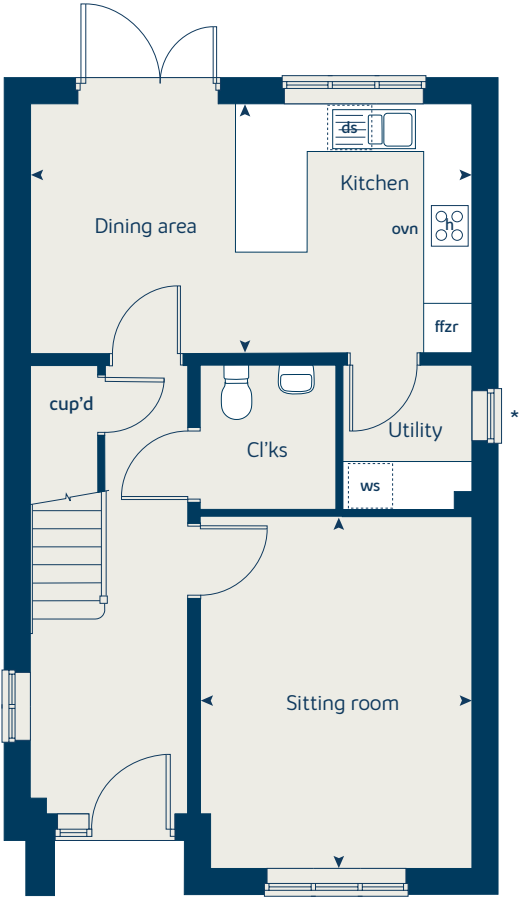
ovn	oven	ffzr	fridge freezer
h	hob	cup'd	cupboard
ds	dishwasher space	◀ ▶	measuring points
ws	washing machine space		

The Rosewood | X4308 (IF) 02 vt CROTH |
The floorplan has been produced for illustrative purposes only. Room sizes shown are between arrow points as indicated on plan. The dimensions have tolerances of + or -50mm and should not be used other than for general guidance. If specific dimensions are required, enquiries should be made to the sales consultant. The floor plans shown are not to scale. Measurements are based on the original drawings. Slight variations may occur during construction.

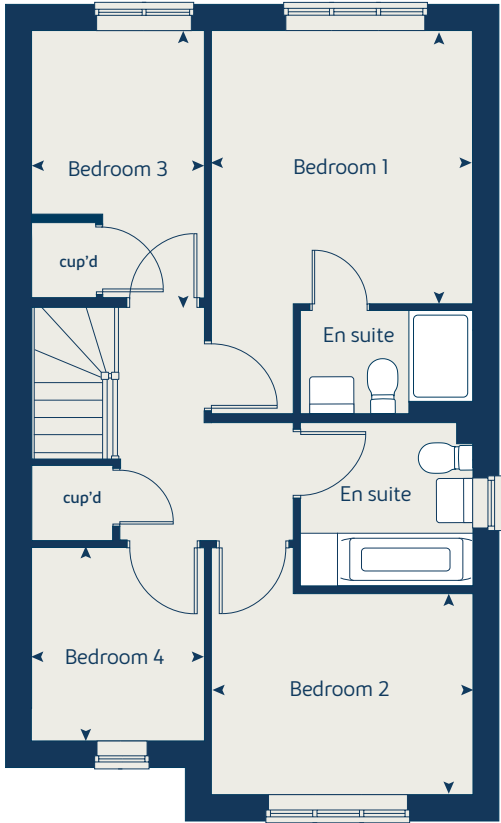
The illustrations shown are computer generated impressions of how the property may look and are indicative only. External details or finishes may vary on individual plots and homes may be built in either detached or attached styles depending on the development layout. Exact specifications, window styles and whether a property is left or right handed may differ from plot to plot. Please speak to our sales consultant for specific plot details.

* Window omitted to selected plots only. Please see sales consultant for further details.

Ground floor



First floor



Please refer to the sales consultant for specific plot details as the illustrations shown are computer generated impressions of how the property may look so are indicative only. External details or finishes may vary on individual plots and homes may be built in either detached or attached styles depending on the development layout. Exact specifications, window styles and whether a property is left or right handed may differ from plot to plot. The floorplans shown are not to scale. Measurements are based on the original drawings. Slight variations may occur during construction.

Floor area: 107 sq m | 1160 sq ft



The Beech

3 bedroom home

Ground floor	metres	feet / inches
Kitchen / dining room	5.08 x 2.71	16' 8" x 8' 8"
Sitting room	4.06 x 3.99	13' 4" x 13' 1"

First floor	metres	feet / inches
Bedroom 2	5.08 x 2.62	16' 8" x 8' 7"
Bedroom 3	3.39 x 2.84	11' 2" x 9' 4"

Second floor	metres	feet / inches
Bedroom 1	3.96 x 3.44	13' 0" x 11' 2"

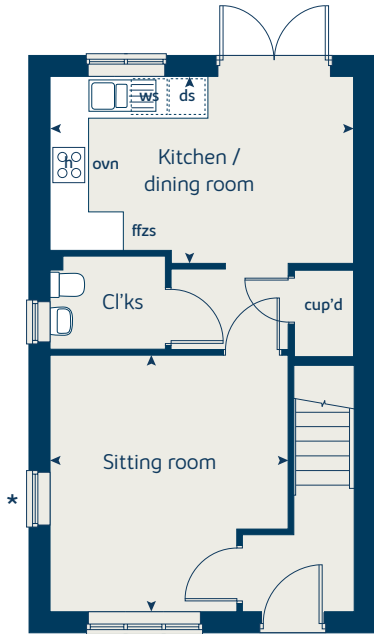
ovn	oven	ffzs	fridge freezer space
h	hob	cup'd	cupboard
ds	dishwasher space	◀ ▶	measuring points
ws	washing machine space		

The Beech | X309 02 Phase 2 CCOLG |
 The floorplan has been produced for illustrative purposes only. Room sizes shown are between arrow points as indicated on plan. The dimensions have tolerances of + or -50mm and should not be used other than for general guidance. If specific dimensions are required, enquiries should be made to the sales consultant. The floor plans shown are not to scale. Measurements are based on the original drawings. Slight variations may occur during construction.

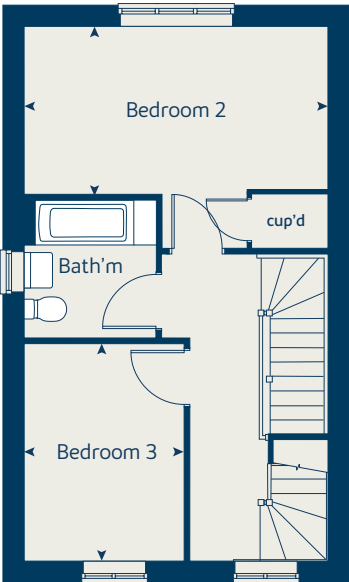
The illustrations shown are computer generated impressions of how the property may look and are indicative only. External details or finishes may vary on individual plots and homes may be built in either detached or attached styles depending on the development layout. Exact specifications, window styles and whether a property is left or right handed may differ from plot to plot. Please speak to our sales consultant for specific plot details.

* Windows applies to selected plots only. Please see sales consultant for further details.

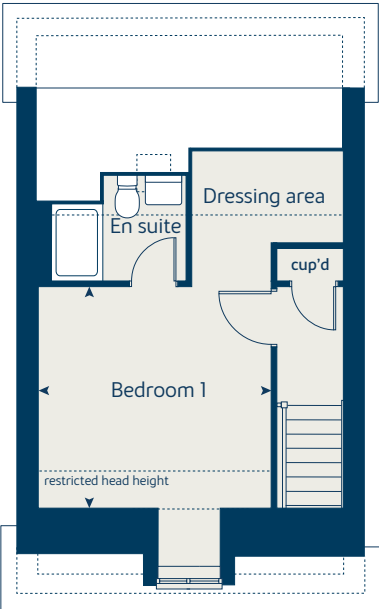
Ground floor



First floor



Second floor



Please refer to the sales consultant for specific plot details as the illustrations shown are computer generated impressions of how the property may look so are indicative only. External details or finishes may vary on individual plots and homes may be built in either detached or attached styles depending on the development layout. Exact specifications, window styles and whether a property is left or right handed may differ from plot to plot. The floorplans shown are not to scale. Measurements are based on the original drawings. Slight variations may occur during construction.

Floor area: 112 sq m | 1,205 sq ft



The Winchcombe

3 bedroom home

Ground floor	metres	feet / inches
Kitchen / dining area	4.36 x 4.23	14' 4" x 13' 11"
Study	2.66 x 2.33	8' 9" x 7' 8"

First floor	metres	feet / inches
Sitting room	4.36 x 4.23	14' 4" x 13' 11"
Bedroom 3	2.81 x 2.40	9' 3" x 7' 11"

Second floor	metres	feet / inches
Bedroom 1	4.36 x 4.23	14' 4" x 13' 11"
Bedroom 2	4.36 x 2.81	14' 4" x 9' 3"

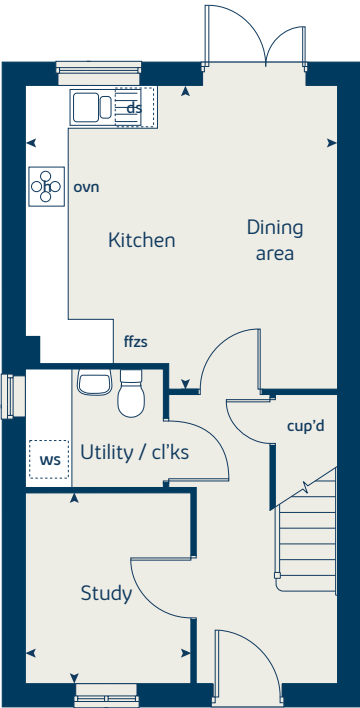
ovn	oven	ffzs	fridge freezer space
h	hob	cup'd	cupboard
ds	dishwasher space	◄ ►	measuring points
ws	washing machine space		

The Winchcombe | P308 vt CCOLG |

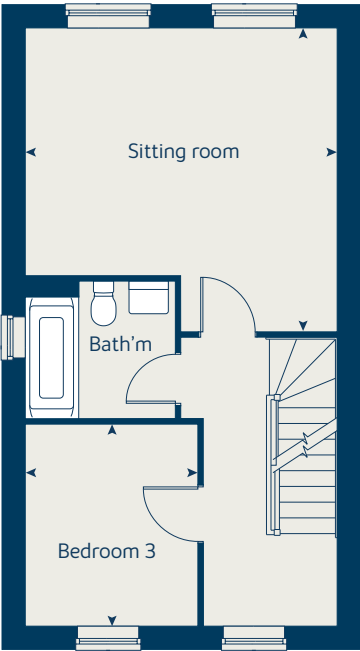
The floorplan has been produced for illustrative purposes only. Room sizes shown are between arrow points as indicated on plan. The dimensions have tolerances of + or -50mm and should not be used other than for general guidance. If specific dimensions are required, enquiries should be made to the sales consultant. The floor plans shown are not to scale. Measurements are based on the original drawings. Slight variations may occur during construction.

The illustrations shown are computer generated impressions of how the property may look and are indicative only. External details or finishes may vary on individual plots and homes may be built in either detached or attached styles depending on the development layout. Exact specifications, window styles and whether a property is left or right handed may differ from plot to plot. Please speak to our sales consultant for specific plot details.

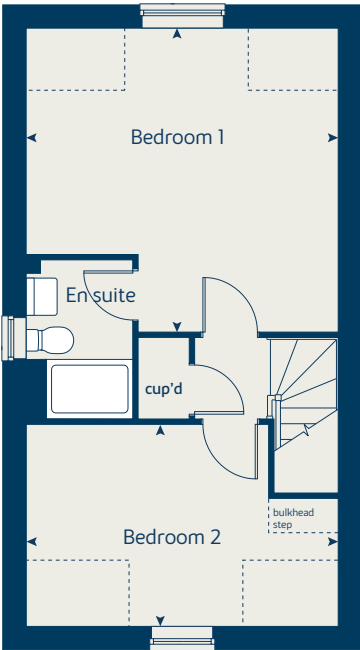
Ground floor



First floor



Second floor



Please refer to the sales consultant for specific plot details as the illustrations shown are computer generated impressions of how the property may look so are indicative only. External details or finishes may vary on individual plots and homes may be built in either detached or attached styles depending on the development layout. Exact specifications, window styles and whether a property is left or right handed may differ from plot to plot. The floorplans shown are not to scale. Measurements are based on the original drawings. Slight variations may occur during construction.

Floor area: 109 sq m | 1,173 sq ft



The Cypress

3 bedroom home

Ground floor	metres	feet / inches
Kitchen / dining area	5.52 x 3.13	18' 2" x 10' 3"
Sitting room	4.40 x 3.40	14' 6" x 11' 2"

First floor	metres	feet / inches
Bedroom 1	4.10 x 3.27	13' 6" x 10' 9"
Bedroom 2	3.28 x 2.82	10' 9" x 9' 3"
Bedroom 3	3.52 x 2.16	11' 7" x 7' 1"

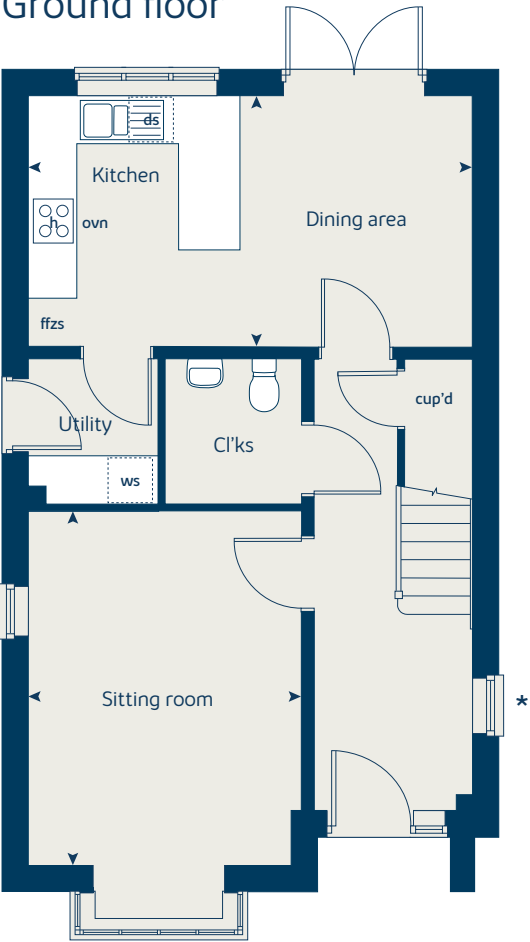
ovn	oven	ffzs	fridge freezer space
h	hob	cup'd	cupboard
ds	dishwasher space	◀ ▶	measuring points
ws	washing machine space		

The Cypress | X308 01 COLG Phase 2 |
The floorplan has been produced for illustrative purposes only. Room sizes shown are between arrow points as indicated on plan. The dimensions have tolerances of + or -50mm and should not be used other than for general guidance. If specific dimensions are required, enquiries should be made to the sales consultant. The floor plans shown are not to scale. Measurements are based on the original drawings. Slight variations may occur during construction.

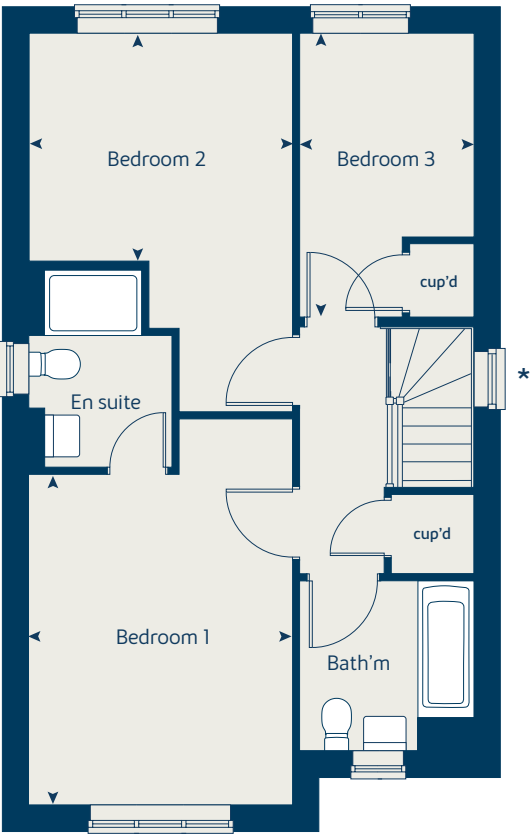
The illustrations shown are computer generated impressions of how the property may look and are indicative only. External details or finishes may vary on individual plots and homes may be built in either detached or attached styles depending on the development layout. Exact specifications, window styles and whether a property is left or right handed may differ from plot to plot. Please speak to our sales consultant for specific plot details.

* Windows applies to selected plots only. Please see sales consultant for further details.

Ground floor



First floor



Please refer to the sales consultant for specific plot details as the illustrations shown are computer generated impressions of how the property may look so are indicative only. External details or finishes may vary on individual plots and homes may be built in either detached or attached styles depending on the development layout. Exact specifications, window styles and whether a property is left or right handed may differ from plot to plot. The floorplans shown are not to scale. Measurements are based on the original drawings. Slight variations may occur during construction.

Floor area: 103 sq m | 1,108 sq ft



The Spruce

3 bedroom home

Ground floor	metres	feet / inches
Kitchen / dining area	5.51 x 3.14	18' 1" x 10' 4"
Sitting room	5.52 x 3.31	18' 1" x 10' 11"

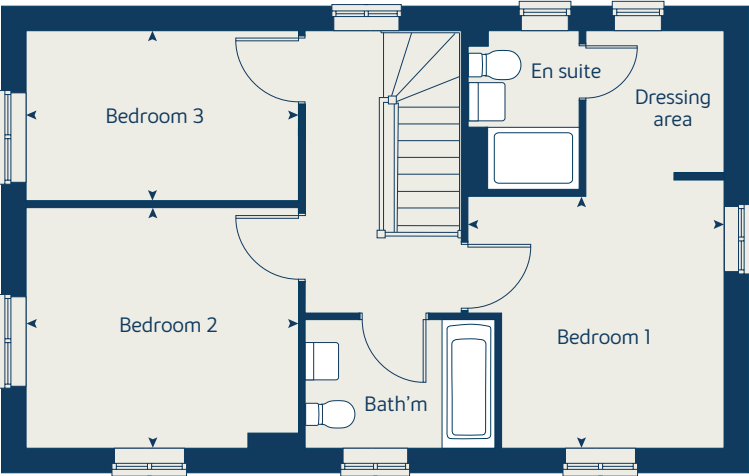
First floor		
Bedroom 1	3.35 x 3.33	10' 9" x 10' 9"
Bedroom 2	3.59 x 3.26	11' 10" x 10' 9"
Bedroom 3	3.63 x 2.17	11' 11" x 7' 2"

ovn	oven	ffzs	fridge freezer space
h	hob	cup'd	cupboard
ds	dishwasher space	◀ ▶	measuring points
ws	washing machine space		

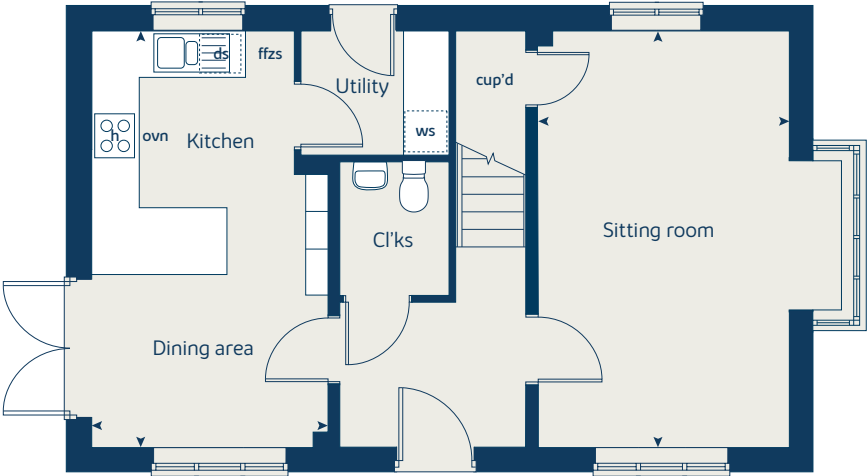
The Spruce | X307 CCOLG Phase 2 |
 The floorplan has been produced for illustrative purposes only. Room sizes shown are between arrow points as indicated on plan. The dimensions have tolerances of + or -50mm and should not be used other than for general guidance. If specific dimensions are required, enquiries should be made to the sales consultant. The floor plans shown are not to scale. Measurements are based on the original drawings. Slight variations may occur during construction.

The illustrations shown are computer generated impressions of how the property may look and are indicative only. External details or finishes may vary on individual plots and homes may be built in either detached or attached styles depending on the development layout. Exact specifications, window styles and whether a property is left or right handed may differ from plot to plot. Please speak to our sales consultant for specific plot details.

First floor



Ground floor



Please refer to the sales consultant for specific plot details as the illustrations shown are computer generated impressions of how the property may look so are indicative only. External details or finishes may vary on individual plots and homes may be built in either detached or attached styles depending on the development layout. Exact specifications, window styles and whether a property is left or right handed may differ from plot to plot. The floorplans shown are not to scale. Measurements are based on the original drawings. Slight variations may occur during construction.

Floor area: 103 sq m | 1,108 sq ft



The Rowan

3 bedroom home

Ground floor	metres	feet / inches
Kitchen	2.85 x 2.46	9' 4" x 8' 1"
Sitting / dining room	5.49 x 5.19	18' 0" x 17' 0"

First floor	metres	feet / inches
Bedroom 1	3.68 x 3.57	12' 1" x 11' 9"
Bedroom 2	2.97 x 2.44	9' 9" x 8' 0"
Bedroom 3	3.54 x 2.13	11' 7" x 7' 0"

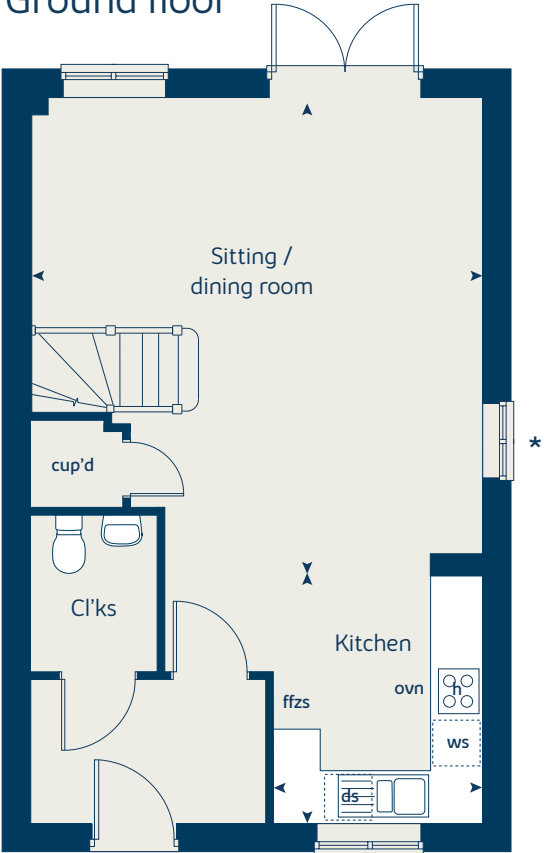
ovn	oven	ffzs	fridge freezer space
h	hob	cup'd	cupboard
ds	dishwasher space	◀ ▶	measuring points
ws	washing machine space		

The Rowan | X306 02 Phase 2 CCOLG |
 The floorplan has been produced for illustrative purposes only. Room sizes shown are between arrow points as indicated on plan. The dimensions have tolerances of + or -50mm and should not be used other than for general guidance. If specific dimensions are required, enquiries should be made to the sales consultant. The floor plans shown are not to scale. Measurements are based on the original drawings. Slight variations may occur during construction.

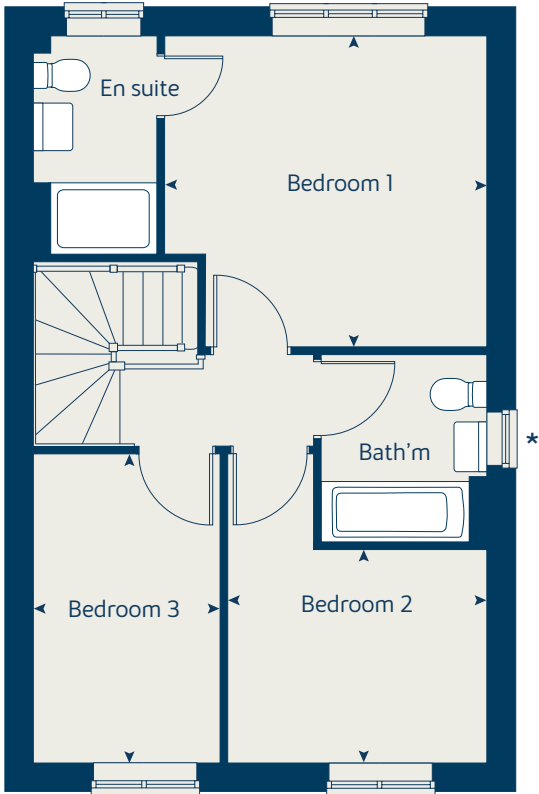
The illustrations shown are computer generated impressions of how the property may look and are indicative only. External details or finishes may vary on individual plots and homes may be built in either detached or attached styles depending on the development layout. Exact specifications, window styles and whether a property is left or right handed may differ from plot to plot. Please speak to our sales consultant for specific plot details.

* Windows apply to selected plots only. Please see sales consultant for further details.

Ground floor



First floor



Please refer to the sales consultant for specific plot details as the illustrations shown are computer generated impressions of how the property may look so are indicative only. External details or finishes may vary on individual plots and homes may be built in either detached or attached styles depending on the development layout. Exact specifications, window styles and whether a property is left or right handed may differ from plot to plot. The floorplans shown are not to scale. Measurements are based on the original drawings. Slight variations may occur during construction.

Floor area: 86 sq m | 925 sq ft









Enhance and personalise your new home with upgrades and extras from our **Select** range

On top of the unique specification at Collingtree Park, you can also use the Bovis Homes Select brochure to add even more finishing touches to your property and personalise your new home even more.

From upgrading your bathrooms with stunning ceramics, or adding smooth sliding wardrobes to your master bedroom, there are a wide range of additional options and choices available.

We also have a range of flooring for you to choose from that includes luxurious carpets, stylish Karndean, ceramics and vinyl. There's also a choice of branded appliances for your kitchen as well as lighting and electrical upgrades.

The availability of items is subject to the stage of build and house type, but our sales consultants will be happy to provide guidance so you can tailor your new home however you choose.

Pick up a **Select** brochure from your sales consultant today to find an extensive list of items available. Such as:

- Quartz kitchen worktops
- Upgraded fridge freezer
- Upgraded dishwasher
- Flooring
- Built-in Symphony wardrobes
- Upgraded tiling in main bathroom and en suite

A home designed with you in mind

We are constantly reviewing our houses and ensuring they are everything that our customers want in a home. That's why we are proud to have developed and launched our new range of homes.

These homes have been created to embrace modern design and styling, whilst retaining the classic architectural traditions on which Bovis Homes has built its heritage and brand since 1885.

An integral part of the design process for our new range of homes was to ensure they have a real wow factor and eye-catching kerb appeal. From designing external elevations to create attractive street scenes through to maximising the flow and size of the rooms, the homes include a variety of features to capture the attention.

The size, positioning and number of windows in our new collection have created bright and airy homes, this mixed in with the higher ceilings gives your property a spacious feel.

The flow and layout of the new homes has been a key consideration to accommodate today's lifestyles, with a focus on future living. With the kitchen at the heart of the home, impressive family spaces have been included to create spacious, sociable living areas, while attention to master bedrooms and en suites has given the homes added desirability.

Collingtree Park

Windingbrook Lane, Collingtree,
Northampton NN4 0PA

01604 556 021

www.bovishomes.co.uk



Collingtree Park is located just south of Northampton. To find us leave the M1 at junction 15 and take the exit towards A45 Northampton / Wellingborough.

After about 1 mile, take the next slip road for East Hunsbury.

At the roundabout take the second exit, Rowtree Road. At the next roundabout, take the first exit.

Follow Windingbrook Lane for approximately half a mile. Collingtree Park is on the right.







Every care has been taken in the preparation of this brochure. Bovis Homes operates a programme of continuous product development. Features, internal and external, may vary from time to time and may differ from those shown in this brochure. The development layout, landscaping and tenure of all dwellings may be subject to change throughout the course of the development.

Computer generated images, maps, photography, and imagery are intended for illustrative purposes. Features, designs, materials, and visual depictions must be treated as general guidance only. Please speak to a sales consultant for details of specific homes.

Vistry South Central Midlands region, Bromwich Court, Highway Point, Gorsey Lane, Coleshill, Warwickshire B46 1JU. Telephone: 01675 437 000

Produced by the Vistry Group Design Studio. CCOLG DS13442 / 02.25